

Price Monitoring and Analysis Country Brief

Burkina Faso

September-December 2010

Key Messages

- Staple food prices have registered a sharp decrease in recent months in local markets mainly thanks to good harvests.
- The political situation is not critical and the country is slowly recovering from the floods which caused extensive losses and damages between July and September.
- Food security conditions are estimated to be generally good throughout the country, however IFPRI Hunger Index depicts an alarming hunger problem.
- The government is procuring grain through the National Security Reserve Management Company to build up stocks.

Background

The total population in Burkina Faso is 15.75 million with an annual growth rate of 3%. Although rural population is about 80%, the contribution of agriculture to the GDP is around 33%. The proportion of undernourished population was estimated at 9%.

Economic Indicators	View Data
Total Population (millions) - 2009 (WB)	15.757
Population growth rate - 2009 (WB)	3%
GNI per capita, \$ PPP - 2009 (WB)	1170
Population below 1\$ PPP per day - 2003 (MDGI)	56%
Rural population - 2009 (WB)	80%
Agriculture, value added (% of GDP) - 2006 (WB)	33%

Food Consumption	
Undernourished Population - 2005/2007 (FAO)	9%
Cereal share in total dietary energy consumption - 2007 (FAO)	73%
Meat share in total dietary energy consumption - 2007 (FAO)	3%

Health Indicators	
Pop. with sustainable access to improved sanitation - 2008 (WHO)	11%
Life expectancy at birth (years) both sexes - 2008 (WHO)	51
Pop. with access to improved drinking water sources - 2008 (WHO)	76%
Prevalence of HIV among adults aged >= 15 years - 2009 (WHO)	1.2%

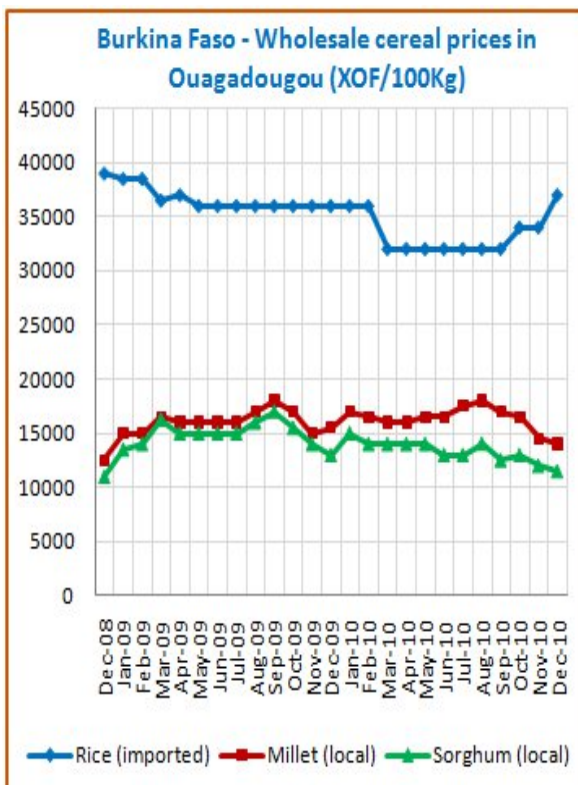
Prices

Cereals: In Ouagadougou prices of sorghum and millet have shown a decreasing trend in the past few months while imported rice prices have increased since Sept. Sorghum wholesale prices in Sept (125 CFA Franc/Kg) were already much lower than in Aug (140), and dropped further in Dec (115). Millet was sold at 170 CFA Franc/Kg in Sept and three months later the price fell to 140. Imported rice prices registered a 16% increase between Sept and Dec from 320 to 370 CFA Franc/Kg. In Nov rice prices were 62% higher in Ouagadougou (696.17 USD/T) compared to the international price of Rice Thai A1 Super (429.6 USD/T).

Livestock: Low grain prices have strengthened pastoralists' purchasing power.

Food Security Situation Assessment

Most poor households are not facing acute food insecurity in the short term and according to FEWSNET, and they should not be acutely food insecure until the end of March 2011. Also areas in the Sahel and North-Central regions which were particularly food insecure due to floods in July, August, and September are recovering and are expected to be generally food secure. Food aid needs for the 2010/11 consumption year should be smaller than usual thanks to good grain production. FAO estimates moderately low undernourishment, but IFPRI reports the situation as alarming hunger.



Source: GIEWS National basic food prices data and analysis tool

CURRENT EMERGENCY ASSESSMENT

Exceptional shortfall in aggregate food production supplies	Widespread lack of access	Severe localized food insecurity	FAO/GIEWS CPFS 2010
---	---------------------------	----------------------------------	-------------------------------------

The majority of poor households will be without acute food insecurity between November and late March because of widespread crop harvests and the decline in the prices of staple foods. These conditions apply even to communes of the Sahel ... [more](#) [FEWSNET](#)

SCALE OF HUNGER (% of Undernourishment)

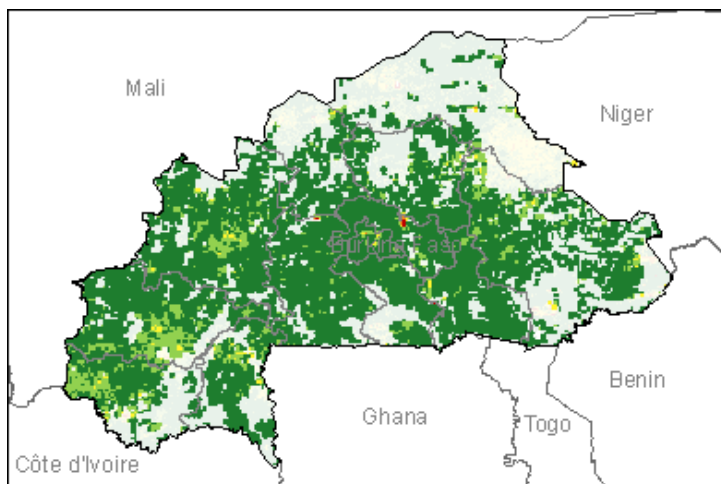
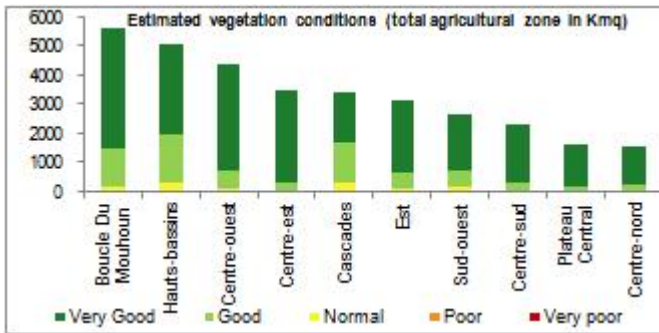
Very high (>= 35%)	High (25-34%)	Moderately high (15-24%)	Moderately low (5-14%)	Very low (< 5% under.)	FAO Hunger Map
--------------------	---------------	--------------------------	------------------------	------------------------	--------------------------------

FAO Hunger Map classifies all countries of the world into five based on % of population undernourished.

Extremely alarming	Alarming	Serious	Moderate	Low	IFPRI/2010 GHI
--------------------	----------	---------	----------	-----	--------------------------------

Vegetation Condition

At the middle of the dry season, good to very good conditions are observed throughout the country. The general indicator of vegetation condition provided below is the relative difference between the NDVI for December 2010 and the average of the last 10 years, calculated on the agricultural zones derived from the Cropland Use Intensity dataset (USGS, 1988).



Source: JRC MARS – FoodSec

Crop phase in the reference period

- Sowing** Rice - Potatoes (Late)
- Growing** No crops are growing during the reference period
- Harvesting** Millet - Potatoes (Early)

Natural Disasters, Drought and Conflicts

Presidential elections on the 21st of November 2010 were held peacefully. Torrential rains in July, August and September 2010 caused extensive floods affecting more than 133,000 persons. Considerable losses and damage to livelihoods, and assets have been reported.

Refugees and IDPs	2007	2008	2009
Total in the country	1133	1161	1058
Total outside the country	822	1042	1367

Source: UNHCR Statistical Online Population Database, United Nations High Commissioner for Refugees (UNHCR), Data extracted on 01/12/2010.

Food Balance Sheet

The 2010/11 total cereal production is estimated at 4.45 million tonnes with import requirements at 330,000T for 2010/2011 marketing year (Oct/Nov). Production increased in 2009/2010 when it was at 3.62 million tonnes while the five year average (05-09) was 3.53 million tonnes. Consequently imports have decreased from 376,000T in 2009/10 but are above the five year average of 315,000T.

	2004-2008 average	2008	2009 estimate	change 2009/2008
	000 tonnes			percent
Sorghum	1570	1875	1522	-19
Millet	1106	1255	971	-23
Maize	739	1014	895	-12
Others	121	215	240	12
Total	3536	4358	3627	-17

Note: percentage change calculated from unrounded data.
Source: FAO/GIEWS Country Cereal Balance Sheets

Source: GIEWS Country Briefs

Government Policies

The National Security Reserve Management Company (SONAGESS) is expected to procure some 14,403 MT of local grain crops to build up the National Security Reserve and Intervention Stock. The company also intends to purchase paddy rice and cowpeas for the Gov school meals program. Until Oct 2010 SONAGESS subsidized grain prices to households at risk of food-insecurity.

Consumer and market oriented measures	Build up stocks; Price Subsidy on grain (Oct 2010).
Producer oriented measures	National programme for Food Security (PNSA)
Trade policy measures	n.a.
Safety net (increased or introduced)	WFP Purchase for Progress

Different sources

Current events to watch (Click to see the full report)

- [WFP News - Special Nutrition Edition January 2011](#)
- [Burkina Faso: women help stop the spread of HIV and AI...](#)
- [BURKINA FASO Perspective sur la sécurité alimentaire J...](#)
- [SAHEL ET AFRIQUE DE L'OUEST Mise à jour de la perspect...](#)
- [West Africa: Population movement preparedness and resp...](#)

For more information, contact: Information-for-action@fao.org
Website: www.foodsec.org

Powered By the **GIEWS Workstation**