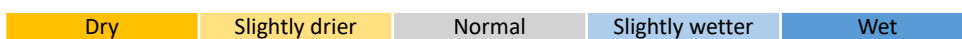


**Seasonal precipitation predictions in the Desert Locust winter/spring/summer breeding areas
(March–August 2025)**

The latest seasonal dynamical models predict above-average rainfall in northern Africa’s Sahara, particularly in Algeria and Libya, during the spring months of March and April. In contrast, dry conditions and below-normal precipitation are expected to persist from the Horn of Africa to the southern Red Sea and the southern Arabian Peninsula through May. For the summer, the models indicate a potential for increased rainfall in the northern Sahel of Africa and along the Indo-Pakistan border in July and August. La Niña conditions developed in December 2024 and are expected to persist through March–April 2025. While they may extend into the summer, it is still too early to confirm.

PRECIPITATION ANOMALY	Mar	Apr	May	Jun	Jul	Aug
Algeria (central/south)	Wet	Wet	Normal	Slightly wetter	Wet	Wet
Chad	Wet	Wet	Slightly wetter	Normal	Wet	Wet
Djibouti	Slightly wetter	Wet	Wet	Wet	Wet	Wet
Egypt (SE Red Sea–winter, Nile–summer)	Wet	Wet	Slightly wetter	Slightly wetter	Wet	Wet
Eritrea (western–summer, coastal–winter)	Wet	Wet	Slightly wetter	Normal	Wet	Wet
Ethiopia (Somali–spring, Afar–summer)	Slightly wetter	Slightly wetter	Slightly wetter	Wet	Wet	Wet
India (Rajasthan, Gujarat)	Wet	Wet	Wet	Wet	Wet	Wet
Iran (south–spring)	Slightly wetter	Slightly wetter	Slightly wetter	Slightly wetter	Wet	Wet
Libya (southwest–spring)	Wet	Wet	Normal	Slightly wetter	Wet	Wet
Mali (northeast)	Slightly wetter	Wet	Wet	Wet	Wet	Wet
Mauritania (south–summer, NW–autumn)	Wet	Wet	Wet	Slightly wetter	Wet	Wet
Morocco (W Sahara–autumn, Atlas–spring)	Wet	Wet	Wet	Slightly wetter	Wet	Wet
Niger (Tamesna, Air)	Wet	Wet	Wet	Wet	Wet	Wet
Oman (spring)	Slightly wetter	Slightly wetter	Wet	Wet	Wet	Wet
Pakistan (southwest–spring, east–summer)	Wet	Wet	Wet	Wet	Wet	Wet
Saudi Arabia (Red Sea, interior–spring)	Wet	Wet	Wet	Wet	Wet	Wet
Somalia (N coast–winter, N interior–spring)	Slightly wetter	Slightly wetter	Slightly wetter	Wet	Wet	Wet
Sudan (interior–summer, coastal–winter)	Wet	Wet	Wet	Wet	Wet	Wet
Yemen (interior–summer, coastal–winter)	Slightly wetter	Slightly wetter	Slightly wetter	Wet	Wet	Wet



Desert Locust and precipitation predictions

Western Region

According to the subseasonal models, central Algeria and western Libya could receive rains this week. Next week, northeastern Morocco, central Algeria, southern Libya, northern Chad and northern Niger may receive some rains. Southern Algeria and southwestern Libya can expect wet conditions during the first half of March. Later in March dry conditions may prevail except in Western Sahara and maybe again in northern Chad and southern Libya at the end of March.

According to the next six-month seasonal models, above-normal rainfall may occur in March and April in northern Mali, northern Niger, south and central Algeria, northern Chad and southwest Libya. Western Mauritania may also receive anormal rains in April and May. Consequently, spring breeding is anticipated primarily in Algeria and southwest Libya, with lesser activity in northern Mali, Niger and Chad. The summer season in the Sahel may commence in July with above-normal rainfall in Chad, Niger and Mali and may continue in August with the same trend of wet conditions in the Sahel.

Central Region

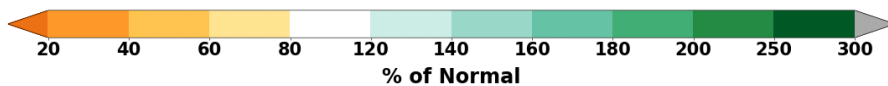
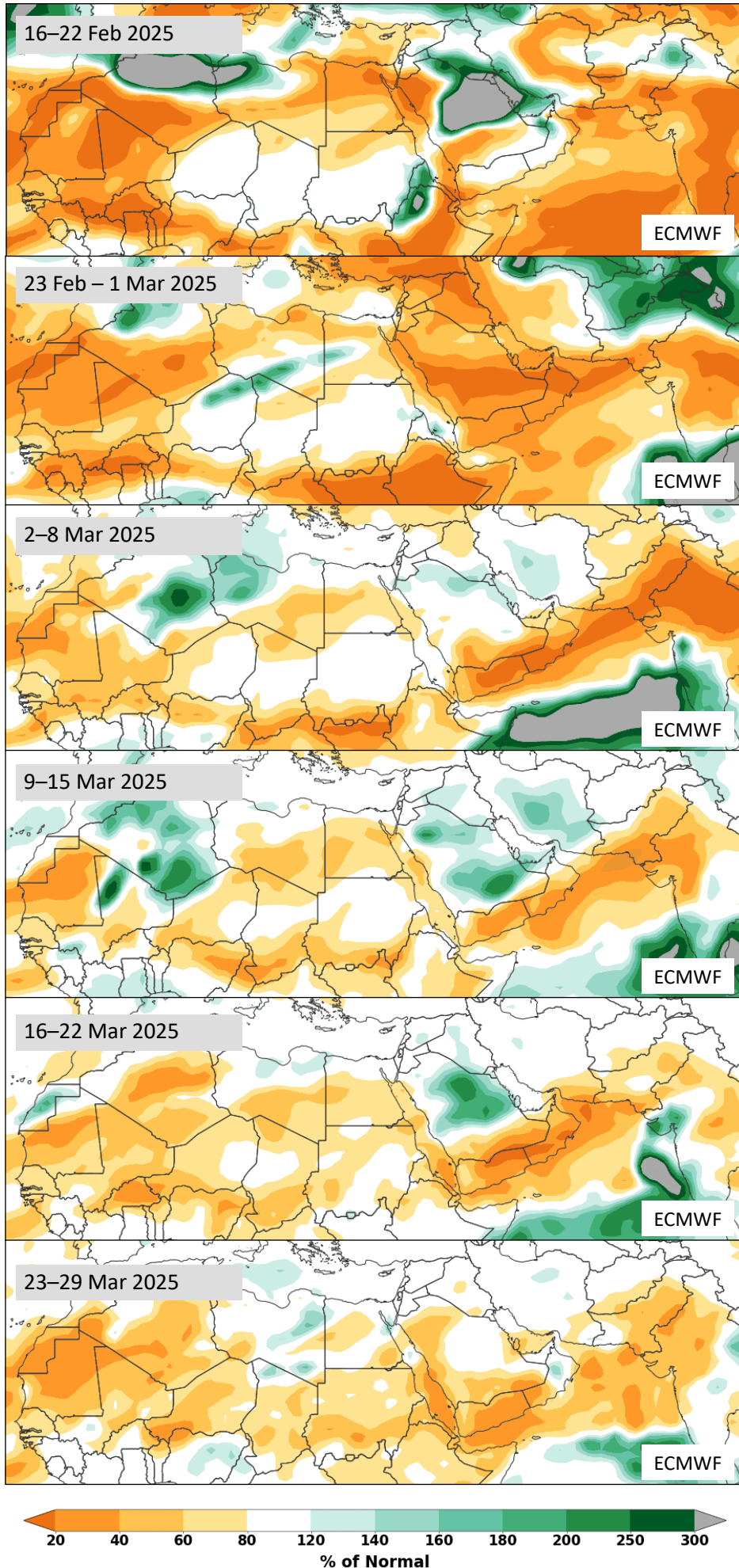
Subseasonal models indicate that rains could occur along the Eritrean coast and in the interior of Saudi Arabia this week. Some light rains may fall on the southern Red Sea coast of Sudan and Eritrea the last week of February. Dry conditions are expected to be generalised around the Red Sea over the month of March. In the interior of Saudi Arabia, spring rainfalls are expected the second and third weeks of March.

Seasonal models predict more rainfall in March compared to subseasonal models. In March, normal to above-normal rainfalls are expected in central Saudi Arabia, the interior of Sudan and southern Egypt. In April, the interior of Sudan and southern Egypt may continue to receive above-normal rains for spring breeding. However, dry conditions are still forecasted in Egypt and Saudi Arabia in May and June. Somalia will remain mostly dry through the spring. Oman may receive some spring rains in May and June, while the interior of Saudi Arabia could receive late spring rains in June in the south. As a result, small-scale breeding is anticipated during the spring in the region. In July and August, the summer season may bring above-normal rainfall in Sudan, Eritrea, Ethiopia, southern Saudi Arabia, Oman and Yemen.

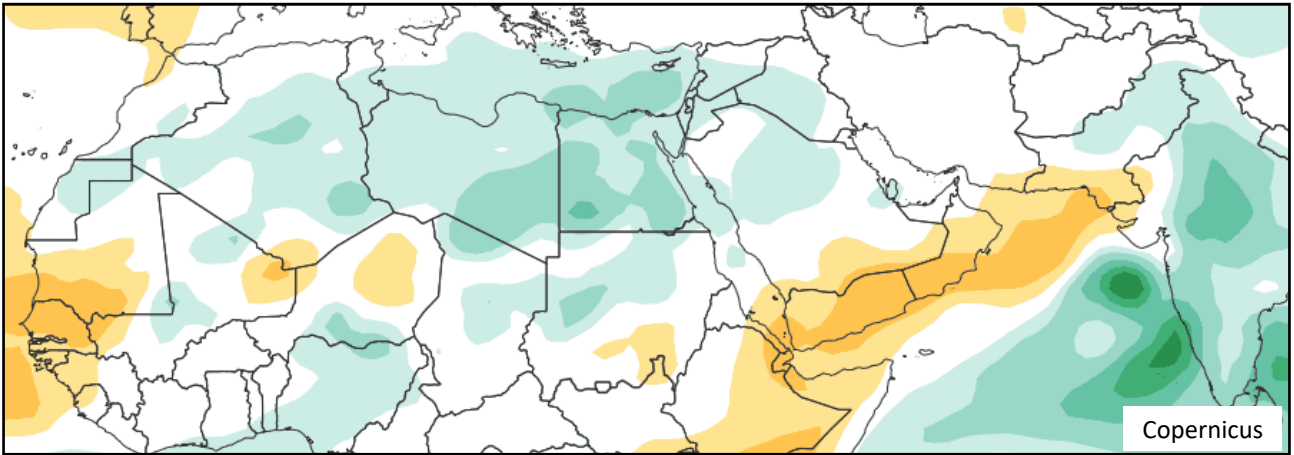
Eastern Region

Seasonal models for the next six months predict below-normal rainfall across southeastern Iran and southwestern Pakistan during the spring season from March to May. As a result, very little spring breeding is expected. Pre-monsoon rainfall may be above-normal along the Indo-Pakistan border in June. Monsoon should continue with above-normal levels in July but close to normal in August.

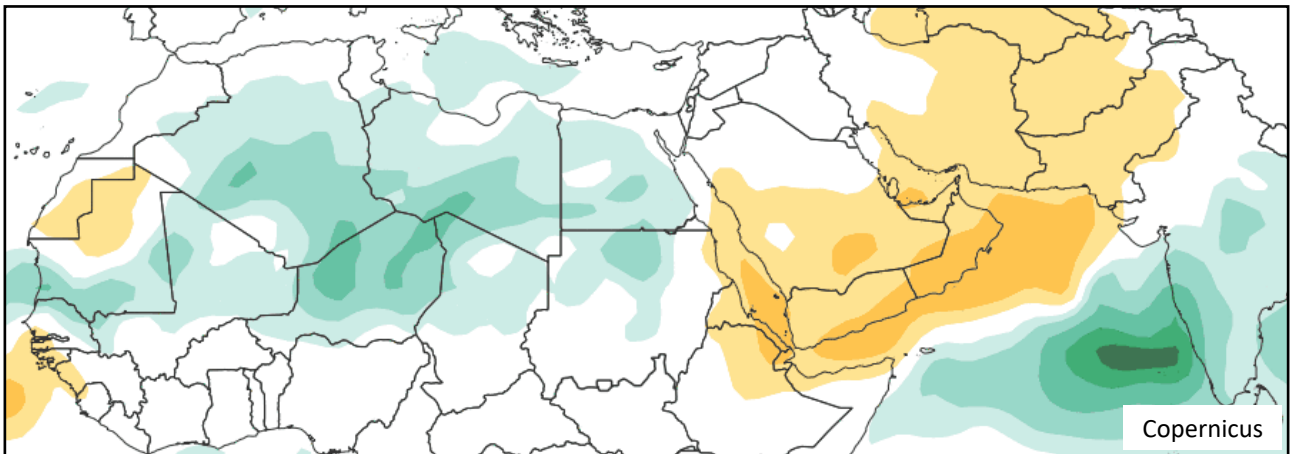
Subseasonal forecast multi-model precipitation (the next six weeks)



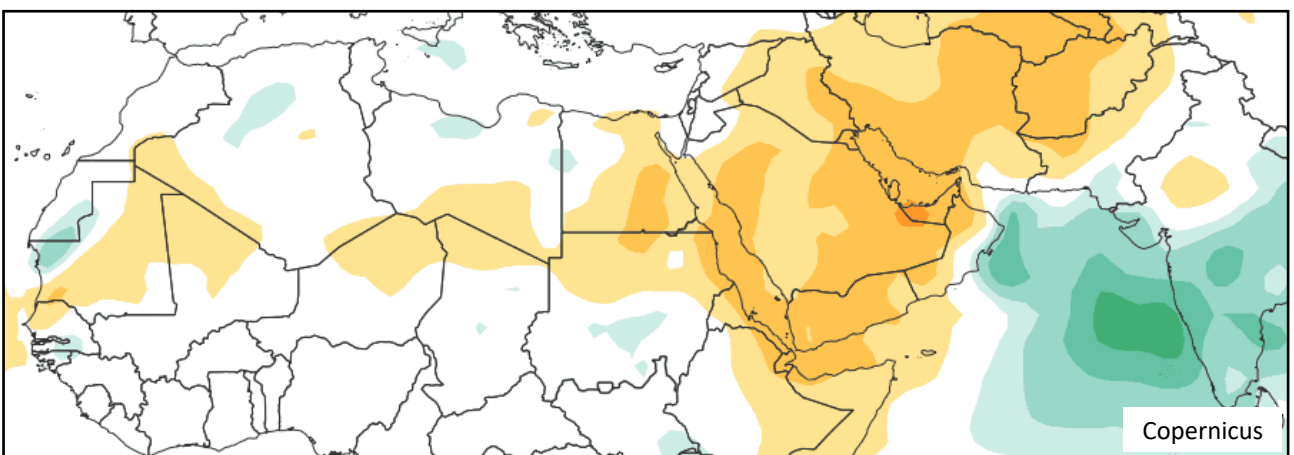
Seasonal forecast multi-model precipitation (March–August 2025)



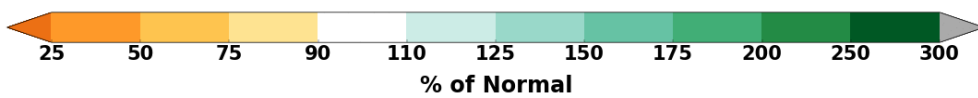
March 2025



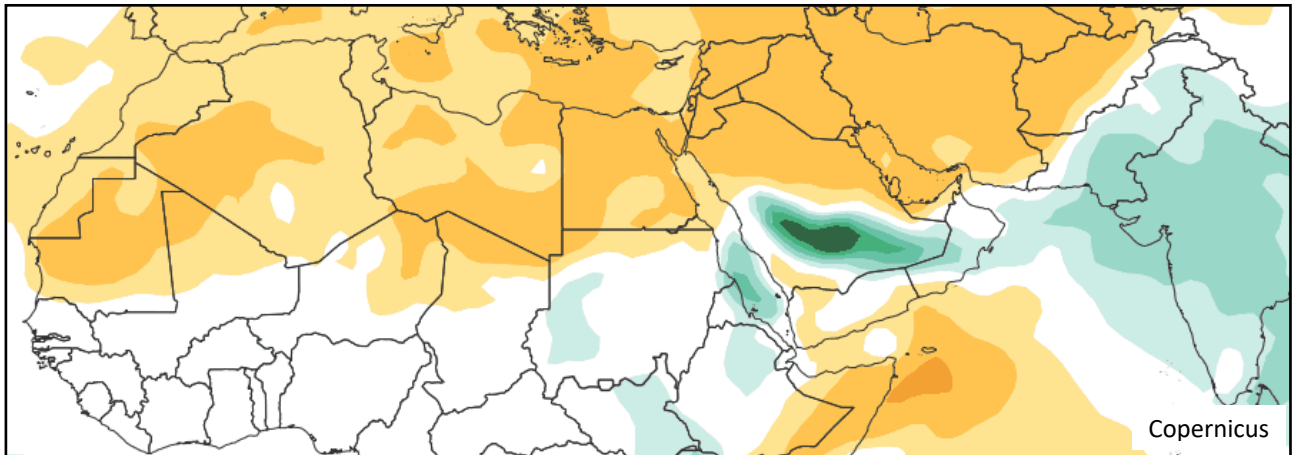
April 2025



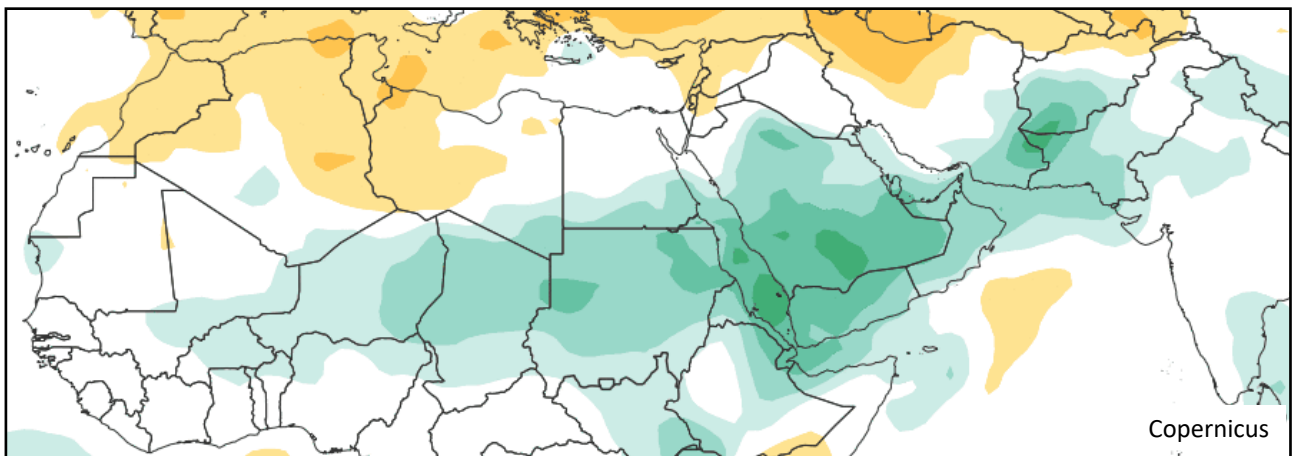
May 2025



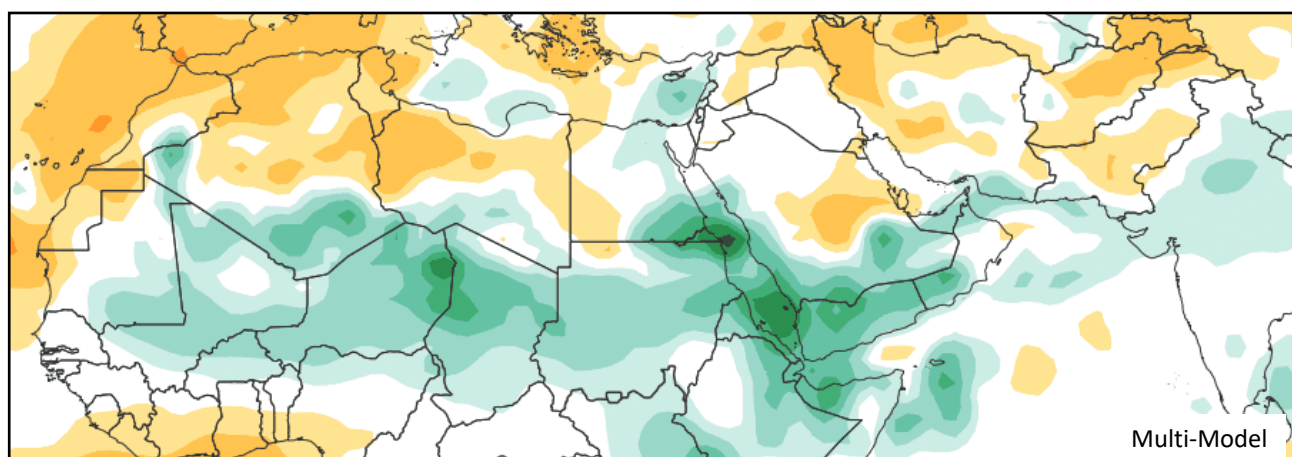
Seasonal forecast multi-model precipitation (continued)



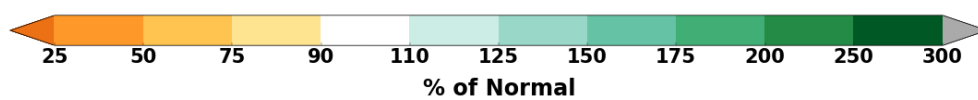
June 2025



July 2025

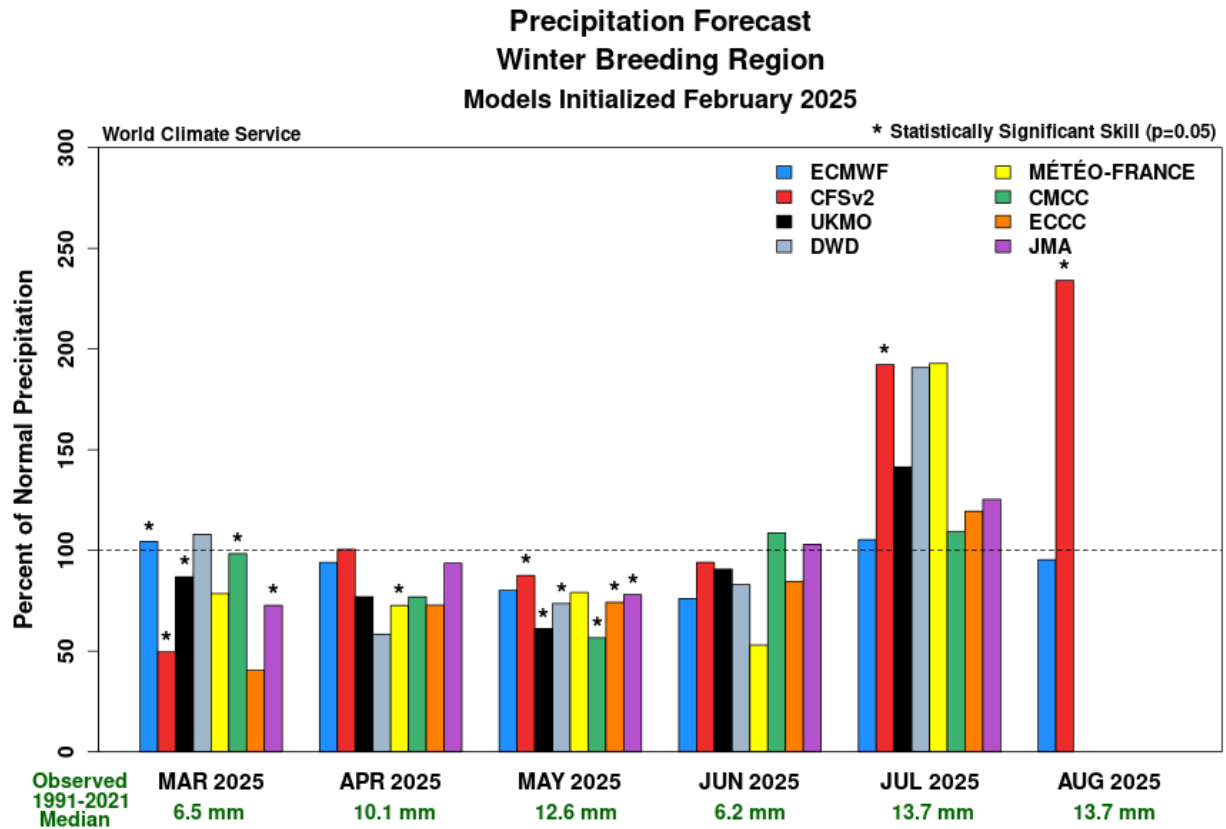


August 2025



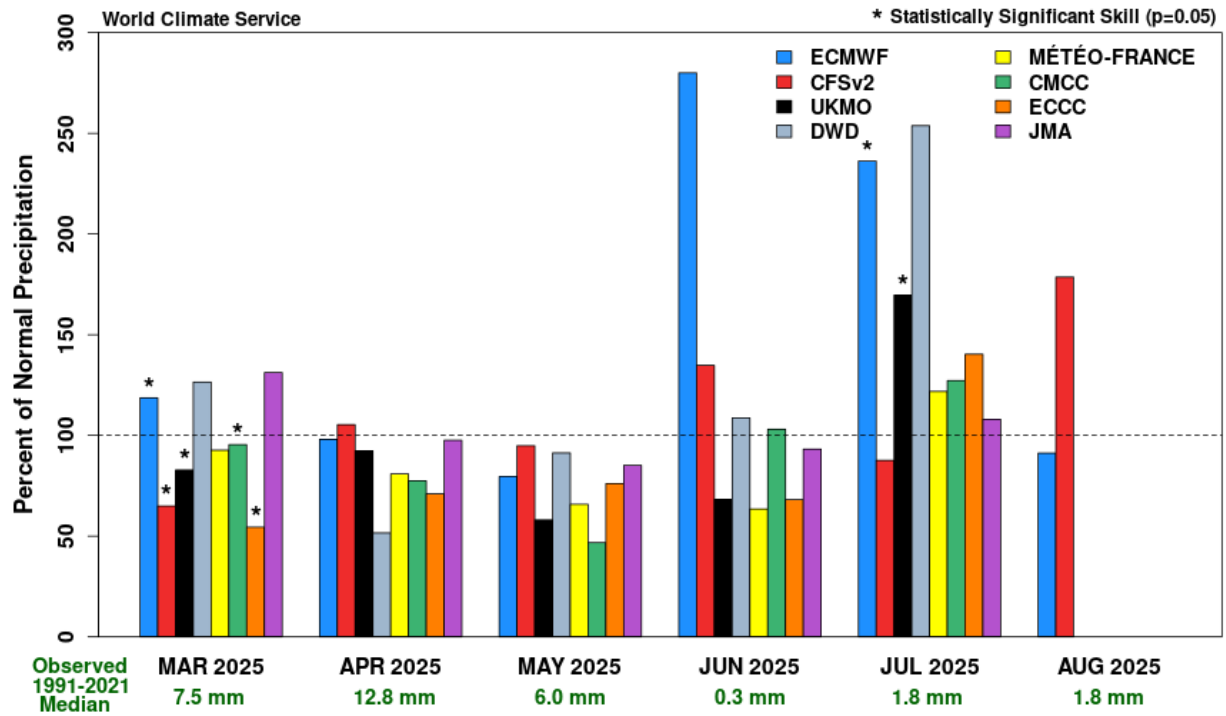
Model forecast charts. The latest seasonal precipitation predictions provided by the World Climate Service (WCS) cover the spring, summer and winter breeding areas of the Desert Locust. This is one of the most sophisticated products available, derived from **eight** models: CFSv2, ECMWF, and Copernicus (CMCC, DWD, ECCC, JMA, Météo-France, UKMO). The results of each model are presented below.

How to interpret the precipitation forecast charts. A value of 100 on the left axis indicates normal rainfall; values less than 100 indicate drier than normal conditions; more than 100 indicates wetter than normal. Little variation between models suggests greater confidence and reliability. An asterisk indicates the most reliable model in each month. When available, the historically best model during the entire forecast period in the region is indicated in the caption.



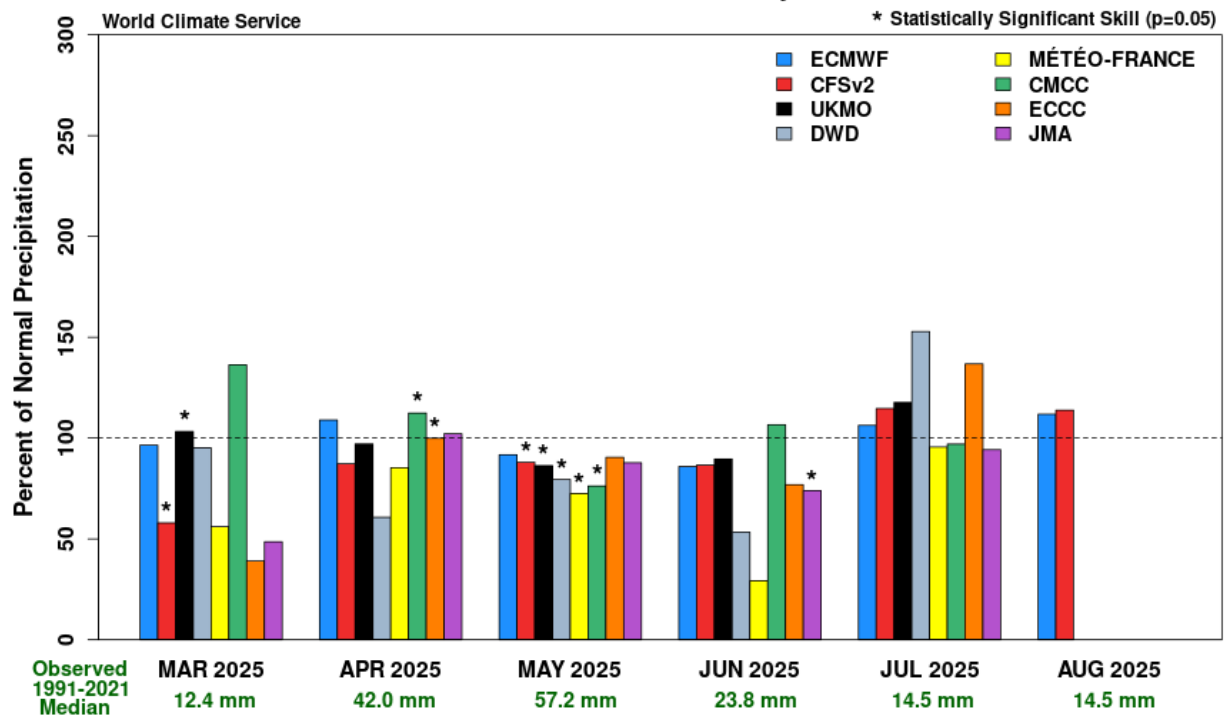
Winter breeding, March (Red Sea / Gulf of Aden)

**Precipitation Forecast
Spring Breeding Region (Central)
Models Initialized February 2025**



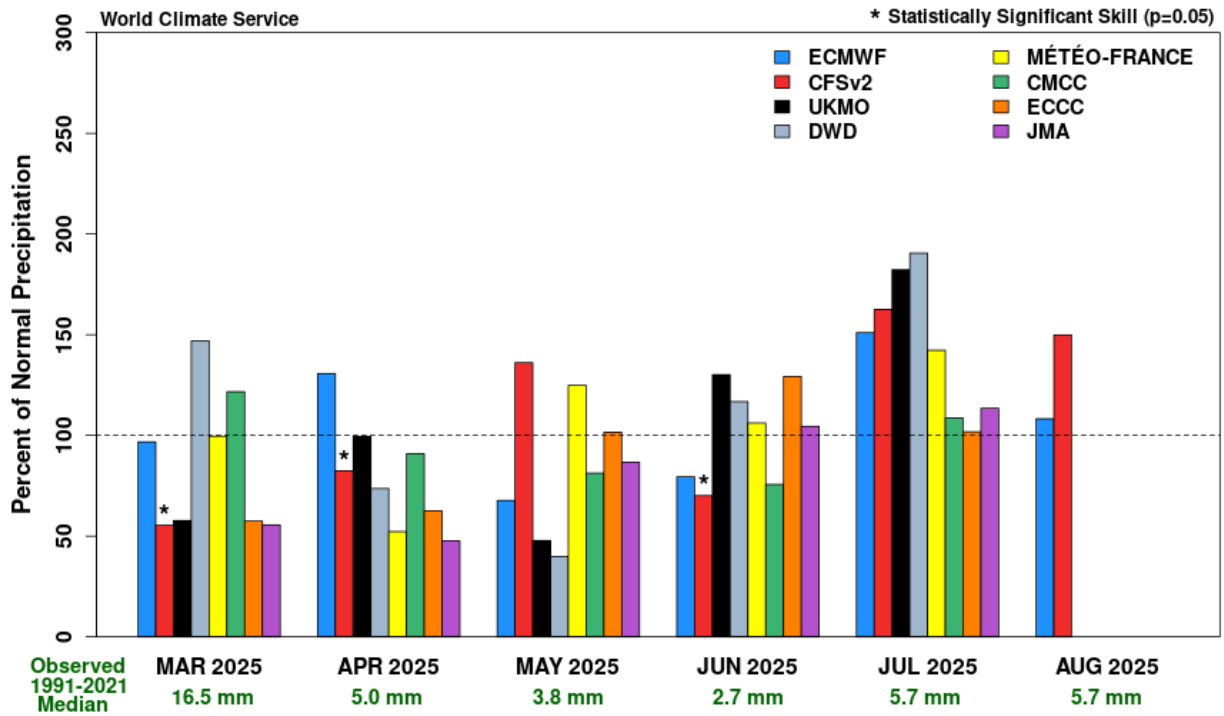
Spring breeding, March–May/June (Arabian Peninsula)

**Precipitation Forecast
Spring Breeding Region (Northeast Africa)
Models Initialized February 2025**



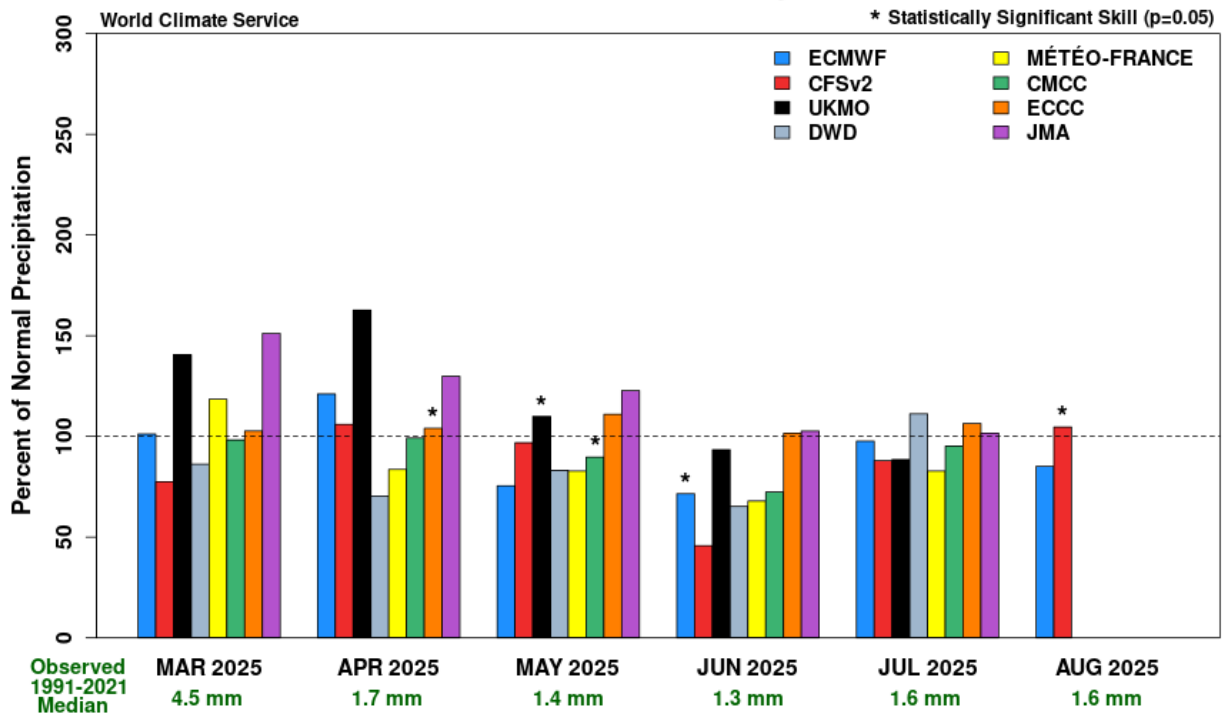
Spring breeding, March–May/June (Horn of Africa)

**Precipitation Forecast
Spring Breeding Region (Eastern)
Models Initialized February 2025**



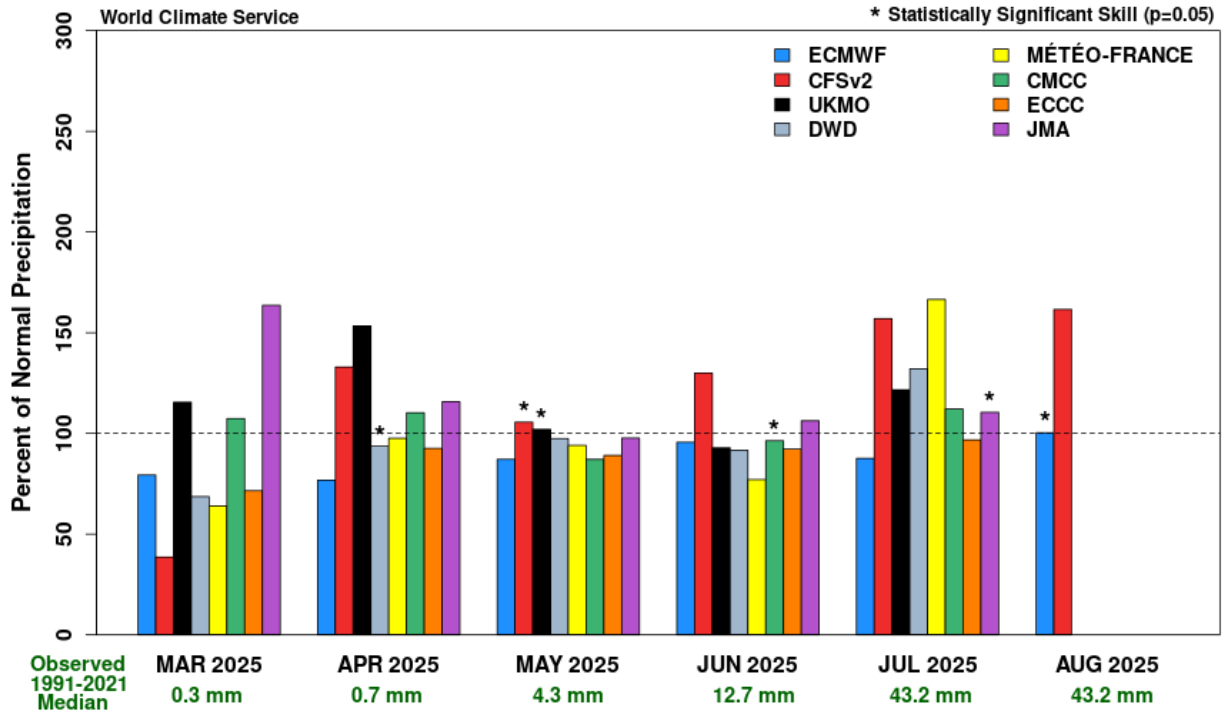
Spring breeding, March–May (SE Iran / SW Pakistan)

**Precipitation Forecast
Spring Breeding Region (Western)
Models Initialized February 2025**



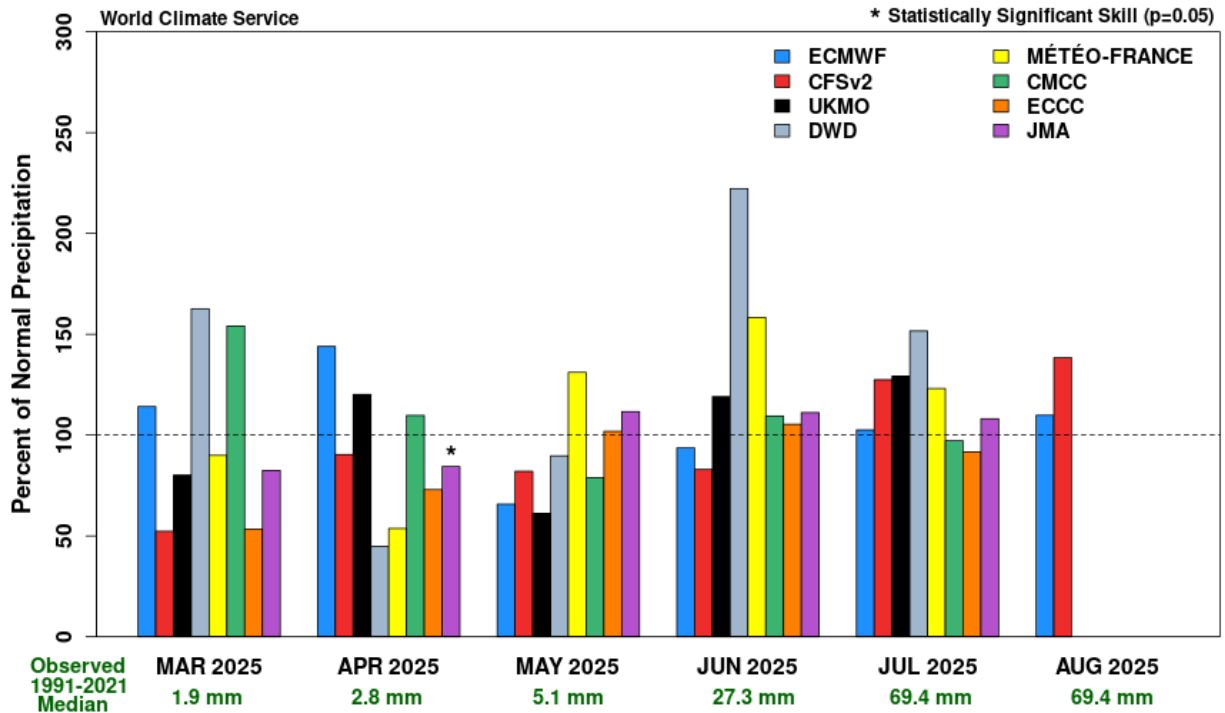
Spring breeding, March–May (NW Africa)

**Precipitation Forecast
Summer Breeding Region (Western)
Models Initialized February 2025**



Summer breeding, July–August (Sahel of W Africa to Sudan/Eritrea)

**Precipitation Forecast
Summer Breeding Region (Eastern)
Models Initialized February 2025**



Summer breeding, July–August (India/Pakistan)

Weather and breeding forecast summary

Western Region

Subseasonal outlook (February–March)

- Above-normal rains in central Algeria, south Libya, northern Niger and northern Chad

Six-month seasonal outlook (March–August)

- Spring: above-normal rains in northwest Africa and northern Sahel from March to May
- Summer: wet conditions for all northern Sahel areas in July and August

Breeding outlook

- Breeding in Algeria, southwest Libya and to a lower extent in the northern Sahel during the spring
- Summer breeding in the northern Sahel from July onwards

Central Region

Subseasonal outlook (February–March)

- Rains in parts of southern Red Sea coast of Sudan, Eritrea, and interior of Saudi Arabia

Six-month seasonal outlook (March–August)

- Winter: above-normal rains on the southeast of Egypt in March
- Spring: normal to above-normal rains on the interior of Saudi Arabia, Sudan and Egypt in March/April
- Summer: above-normal rains in Sudan, Eritrea, Ethiopia, south Saudi Arabia, interior of Yemen and Oman in July and perhaps August

Breeding outlook

- Small-scale breeding during the spring; possible good summer conditions

Eastern Region

Six-month seasonal outlook (March–August)

- Spring: below-normal rainfall in southeast Iran and southwest Pakistan
- Summer: above-normal pre-monsoon rainfall along Indo-Pakistan border in June, above-normal to normal in July and August

Breeding outlook

- Very limited breeding in southeast Iran and southwest Pakistan during the spring
- Limited breeding starting in July along the Indo-Pakistan border