

Price Monitoring and Analysis Country Brief

Dem. Rep. of the Congo

June-August 2010

Key Messages

- Cereal prices in local markets have decreased in recent months but remain at high levels, compared to the period before the 2007/08 food crises.
- Continuing insecurity throughout the country is exacerbating the already poor food security situation.
- Agencies are seriously concerned over the extremely alarming food security conditions throughout the country.
- Different UN agencies have continued providing assistance to the conflict affected population.

Background

The Democratic Republic of the Congo has a total population of 64,205 million with a 2% growth rate per annum; 59% of its population lives below the poverty line of 1\$ PPP per day; and 76% is reported as undernourished.

| Economic Indicators | View Data |
|---|-----------|
| Total Population (millions) - 2008 (WB) | 64.257 |
| Population growth rate - 2008 (WB) | 2% |
| GNI per capita, \$ PPP - 2008 (WB) | 280 |
| Population below 1\$ PPP per day - 2006 (MDGI) | 59% |
| Rural population - 2008 (WB) | 66% |
| Agriculture, value added (% of GDP) - 2008 (WB) | 40% |

| Food Consumption | |
|---|------|
| Undernourished Population - 2005/2007 (FAO) | 69% |
| Cereal share in total dietary energy consumption - 2007 (FAO) | 23% |
| Meat share in total dietary energy consumption | n.a. |

| Health Indicators | |
|--|-----|
| Pop. with sustainable access to improved sanitation - 2008 (WHO) | 23% |
| Life expectancy at birth (years) both sexes - 2008 (WHO) | 48 |
| Pop. with access to improved drinking water sources - 2008 (WHO) | 46% |
| Prevalence of HIV among adults aged >= 15 years - 2005 (WHO) | 2% |

Prices

Local rice prices in Kisangani have decreased from 644.4 CDF/Kg reached in June, to 623 CDF/Kg in July, and to 595 in August. Maize prices have fallen from 220.25 CDF/Kg in May to 164.25 in July and 162 in August. The same decreasing trend was observed for cassava flour prices, which was traded at 292.75 CDF/Kg in July and 281 in August. In Kinshasa cassava prices were much higher (676 in July and 639 CDF/Kg in Aug). In Bunia markets cereal prices were also higher than in Kisangani: rice registered 891.5 in July and 865 CDF/Kg in August. Imported rice prices in August were quoted at 1085.07 USD/T in Kinshasa, 188% higher than the international price of Rice Thai A1 Super FOB Bangkok (377.06 USD/T).



Source: GIEWS Country Briefs

Natural Disasters, Drought and Conflicts

Conflict, violence and attacks have continued in recent months. Insecurity due to armed groups which kill, abduct and force people to flee their home is widespread and has continued unabated in several provinces. The total number of displaced people is estimated at around 1.9 million. In the Oriental Province, in the Uele districts, Bas Uele and Haut Uele, attacks by groups of the Lord's Resistance Army have been particularly violent and systemic, exhausting the population. In recent months clashes were reported also in the North-western Equateur Province, in the Sud Ubagi district and in the North and South Kivu. Particularly violent fighting in the Beni Territories (North Kivu) in June/July has displaced around 60,000 people.

| Refugees and IDPs | 2007 | 2008 | 2009 |
|---------------------------|---------|---------|---------|
| Total in the country | 2555204 | 1669323 | 2362295 |
| Total outside the country | 2784383 | 1918424 | 2662821 |

Source: UNHCR Statistical Online Population Database, United Nations High Commissioner for Refugees (UNHCR), Data extracted on 22/09/2010.

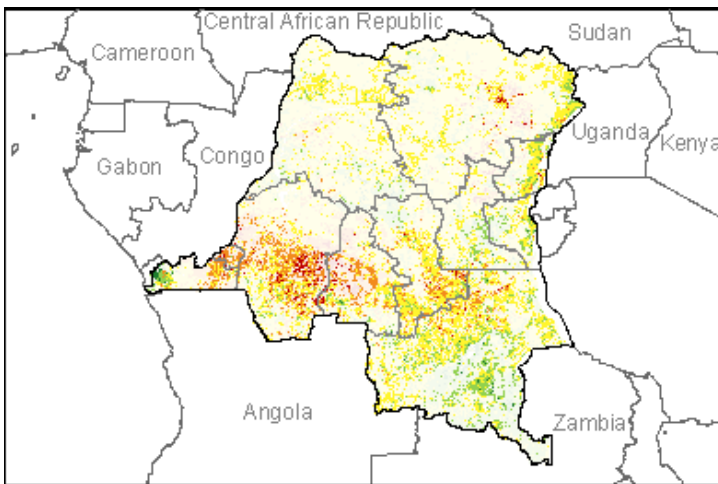
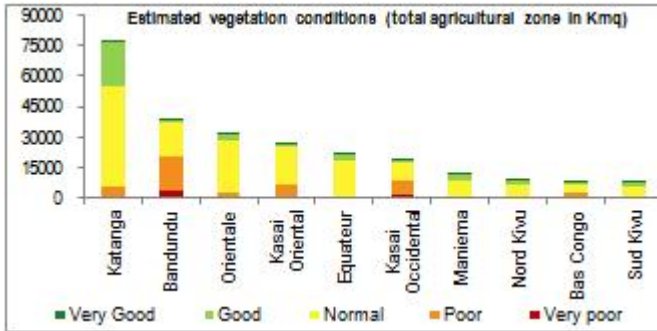
| Disaster Type (last year) | Date | Location | Alert |
|---------------------------|------------|----------------|-------|
| Earthquake | 2010-01-28 | Kivu Province | 1/3 |
| Earthquake | 2009-11-14 | Shaba Province | 1/3 |
| No Floods | - | - | - |

Source: Global Disaster Alert and Coordination System - 3 = 1000 or more people killed or 800000 or more people displaced. 2 = 100 or more people killed or 80000 or more displaced.

Dem. Rep. of the Congo

Vegetation Condition

Normal vegetation conditions are observed throughout the country except for the province of Bandundu where poor to very poor conditions are observed. general indicator of vegetation condition provided below is the relative difference between the NDVI for August 2010 and the average of the last 10 years, calculated on the agricultural zones derived from the GLOBCOVER land cover database (2005).



Source: [JRC MARS – FoodSec](#)

Food Security Situation Assessment

GIEWS estimates severe localized food insecurity in the short term. WFP reports very high hunger and the IFPRI hunger index also highlights a situation of extremely alarming hunger.

CURRENT EMERGENCY ASSESMENT

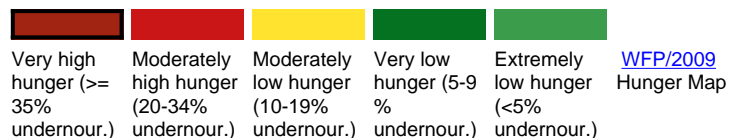


[FAO/GIEWS CPFS 2010](#)

Dem. Rep. of the Congo is not covered by FEWSNET.

[FEWSNET](#)

SCALE OF HUNGER



[WFP/2009 Hunger Map](#)



[IFPRI/2009 GHI](#)

Food Balance Sheet

The 2010 cereal production is forecast at about 1.6 million tonnes, marginally increasing compared to last year (1.5 million tonnes). Lower maize prices on the Zambia border has led to increased flow of maize into DRC. Estimates from WFP/FEWSNet indicate that informal imports into DRC from Zambia in May 2010 reached 6,593 tonnes.

Democratic Republic of the Congo

Cereal production

| | 2005-2009 average | 2009 | 2010 forecast | change 2010/2009 |
|--------------|-------------------|-------------|---------------|------------------|
| | 000 tonnes | | | percent |
| Maize | 1165 | 1200 | 1250 | 4 |
| Rice (paddy) | 316 | 318 | 318 | 0 |
| Millet | 37 | 37 | 37 | 0 |
| Others | 16 | 16 | 16 | 0 |
| Total | 1534 | 1571 | 1621 | 3 |

Note: percentage change calculated from unrounded data.
Source: [FAO/GIEWS Country Cereal Balance Sheets](#)

Source: [GIEWS Country Briefs](#)

Government Policies

The WFP, FAO and NGO partners are working with local authorities to identify the most vulnerable people to provide them with urgent food assistance. WFP is already delivering food stocks in Beni Territory of the North Kivu Province targeting 80,000 and 100,000 IDPs affected by the armed confrontations since the end of June.

| | |
|---------------------------------------|-------------------------------|
| Consumer and market oriented measures | n.a. |
| Producer oriented measures | n.a. |
| Trade policy measures | n.a. |
| Safety net (increased or introduced) | Emergency food distributions. |

Different sources

Current events to watch (Click to see the full report)

[DRC: Displacement and discrimination – the lot of the Bambuti Py...](#)
[In Brief: Floods ravage DRC's Equateur area](#)
[DRC: Timeline on Lubanga's ICC trial](#)
[DRC: International justice denied?](#)
[Analysis: Rethinking sexual violence in DRC](#)

For more information, contact: Information-for-action@fao.org
 Website: www.foodsec.org

Powered By the [GIEWS Workstation](#)