



Source: United Nations. 2020. Map of the world [online]. [Cited July 2022]

Accessibility map was calculated for Con Cuong district of Viet Nam using the road network from open street map and the slope from SRTM. The data is obtained at spatial resolution of 30 meters and aggregated at townlets level for comparative assessment.

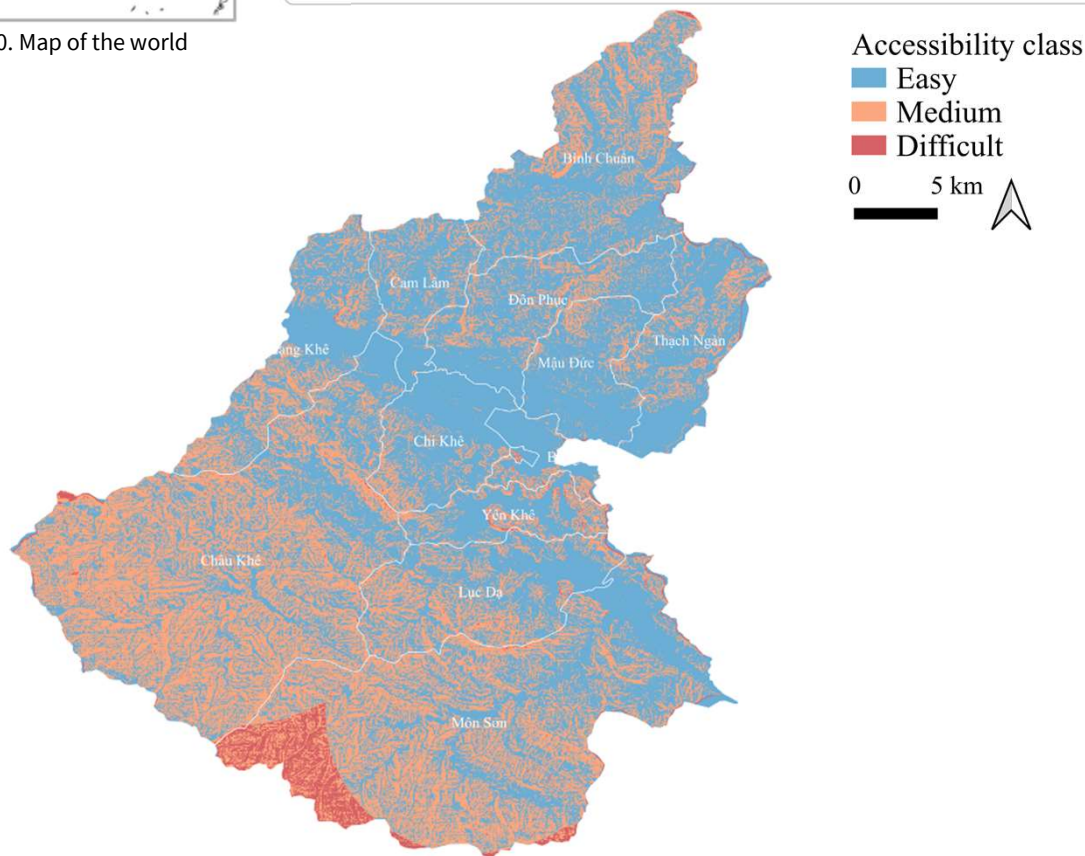


Figure 1: Spatial extent of accessibility class for 2022 in Con Cuong, Viet Nam¹

Table 1: Extent of easy accessibility in Con Cuong

| | Townlets | Area (ha) | Percent |
|-------------|-----------|-----------|---------|
| Top four | Mau Duc | 6 099 | 85.5 |
| | Chi Khe | 6 140 | 81.1 |
| | Con Cuong | 148 | 80.5 |
| | Bong Khe | 2 134 | 78.7 |
| Bottom four | Chau Khe | 19 100 | 43.4 |
| | Mon Son | 18 303 | 44.8 |
| | Luc Da | 7 672 | 62.3 |
| | Lang Khe | 7 139 | 67.1 |

Key Findings

- In Con Cuong district, 101 966 ha of land is accessible with ease, which represents 58.5% of total land area.
- Easily accessible townlets in Con Cuong district are Mau Duc, Chi Khe, Con Cuong, Bong Khe.

Acknowledgement: The assessments were developed with the financial support of the government of Ireland.

Prepared by Shrijwal Adhikari, Amit Ghosh, Fatima Mushtaq, Beau Damen, Matieu Henry in close collaboration with World Agroforestry (ICRAF) and Asian Institute of Technology (AIT) for Monitoring of geospatial indicators for nature-based solutions. Food and Agriculture Organization of United Nations, Rome, Italy.

¹GADM. The boundaries and names shown, and the designations used on these map(s) do not express any opinion whatsoever on the part of FAO concerning the legal status of any country, territory, city or area or of its authorities, or concerning the delimitation of its frontiers and boundaries. Dashed lines on maps represent approximate border lines for which there may not yet be full agreement.