

Price Monitoring and Analysis Country Brief

Afghanistan

May-August 2011

Key Messages

- Wheat prices have been steadily rising since mid 2010 in most markets and are expected to remain high due to the reduced harvest.
- Localized food insecurity is reported in north-western areas where drought conditions affected wheat harvest which has dropped by 28% compared to the 2010 output.
- Drought, coupled with insecurity, has resulted in deteriorating food security conditions. Food access of vulnerable groups is extremely constrained.
- The Government is procuring food to build up stocks and assist food insecure people particularly in the drought-affected provinces.

Background

The total population of Afghanistan is around 34 million and the annual growth rate is 2%. Most of the population lives in rural areas (75%), however the contribution of agriculture to the GDP is 32%.

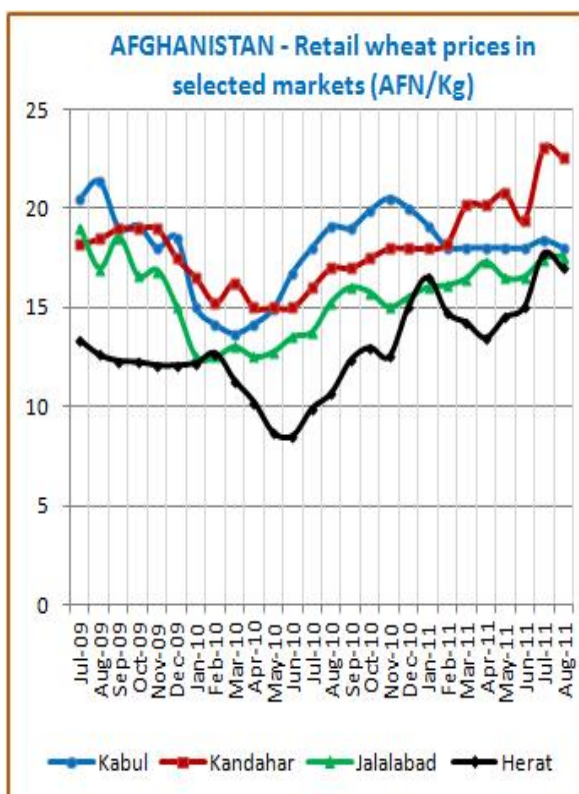
Economic Indicators	View Data
Total Population (millions) - 2010 (WB)	34.385
Population growth rate - 2010 (WB)	2%
GNI per capita, \$ PPP - 2008 (WB)	1100
Population below 1\$ PPP per day	n.a.
Rural population - 2010 (WB)	75%
Agriculture, value added (% of GDP) - 2009 (WB)	32%

Food Consumption	
Undernourished Population - 2006/2008 (FAO)	n.a.
Cereal share in total dietary energy consumption	n.a.
Meat share in total dietary energy consumption	n.a.

Health Indicators	
Pop. with sustainable access to improved sanitation - 2008 (WHO)	37%
Life expectancy at birth (years) both sexes - 2009 (WHO)	48
Pop. with access to improved drinking water sources - 2008 (WHO)	48%
Prevalence of HIV among adults aged >= 15 years - 2005 (WHO)	0.05%

Prices

In August 2011 wheat and wheat flour prices were much higher than prices recorded in August 2010. In Herat wheat prices were at 17 AFG/Kg, some 23% above April prices and 59% above prices in August 2010. In Kabul, wheat prices remained stable at 18 AFG/Kg while in Kandhar prices were 11% above April prices. Bread prices remained almost stable between April and August 2011 and recorded 32 AFG/KG in Herat, 33.3 AFG/KG in Jalalabad, 38.5 AFG/KG in Kabul and 37.8 AFG/KG in Kandahar. In Kabul wheat was traded at 390 USD/T in July, 26% above prices of Hard Red Winter Wheat on the international market.



Source: GIEWS Country Briefs

Food Security Situation Assessment

According to FEWSNET, the overall food security situation has been relatively satisfactory. However north-western areas (Samangan, Balkh, Sar-i-Pul, Jawzjan, Faryab and Badghis provinces) were particularly affected by drought conditions during the early months of the agricultural season, therefore food security conditions of vulnerable people have deteriorated. FEWSNET estimated a phase of food security crisis (IPC Phase 3) which is likely to improve to phase 2 (stress level) thanks to food aid interventions. GIEWS reported severe localized food insecurity levels due to conflict and insecurity as well as high food prices with some moderately food insecure areas in the centre and northeast part of the country.

CURRENT EMERGENCY ASSESSMENT

Exceptional shortfall in aggregate food production supplies	Widespread lack of access	Severe localized food insecurity	FAO/GIEWS CPFS 2011
---	---------------------------	----------------------------------	-------------------------------------

FEWS Net has not found evidence that emergency food assistance will be required in Kandahar over the next six months. [...more](#) [FEWSNET](#)

SCALE OF HUNGER (% of Undernourishment)

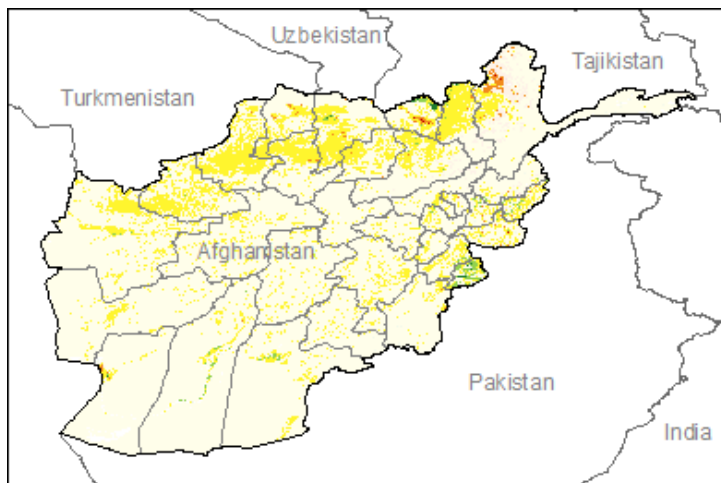
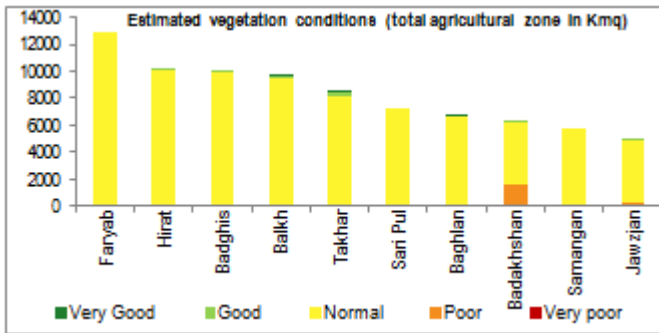
Very high (>= 35%)	High (25-34%)	Moderately high (15-24%)	Moderately low (5-14%)	Very low (< 5% under.)	FAO Hunger Map
--------------------	---------------	--------------------------	------------------------	------------------------	--------------------------------

FAO Hunger Map classifies all countries of the world into five based on % of population undernourished.

Extremely alarming	Alarming	Serious	Moderate	Low	IFPRI/2011 GHI
--------------------	----------	---------	----------	-----	--------------------------------

Vegetation Condition

At the middle of the summer season, normal conditions are observed throughout the country. The general indicator of vegetation conditions provided below is the absolute difference between the NDVI for August 2011 and the average of the last 10 years, calculated on the agricultural zones derived from the FAO-UNEP map of Afghanistan (1993).



Source: JRC MARS – FoodSec

Crop phase in the reference period

- Sowing** Maize - Rice
- Growing** Maize - Rice - Spring wheat
- Harvesting** Winter grains (Wheat and Barley) - Spring wheat - Maize

Natural Disasters, Drought and Conflicts

The drop in harvest is mainly attributed to the dry spell which particularly affected north-western areas and rainfed wheat-producing zones, in central highlands (Day Kundi, Bamyán, and Ghor), northeast (Badakhshan), and western Afghanistan (Hirat). Insecurity and conflict continue to be a concern.

Refugees and IDPs	2008	2009	n.a.
Total in the country	515659	361985	n.a.
Total outside the country	3371919	3279471	n.a.

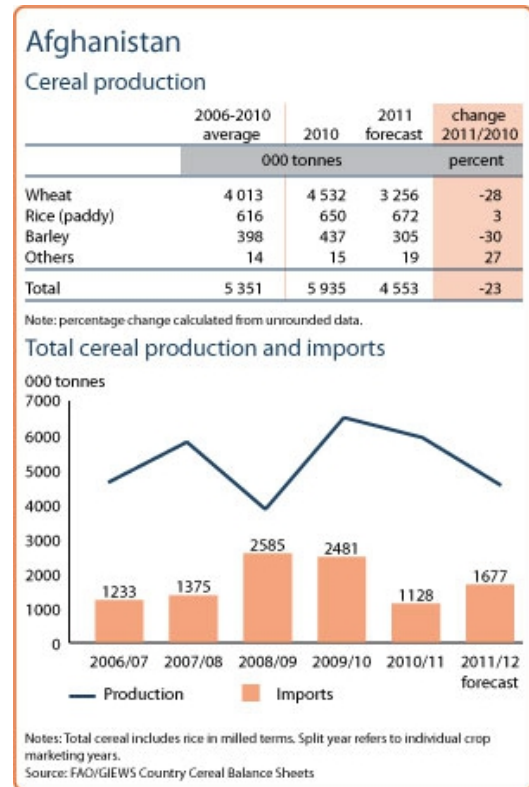
Source: UNHCR Statistical Online Population Database, United Nations High Commissioner for Refugees (UNHCR), Data extracted on 01/12/2010.

Disaster Type (last year)	Date	Location	Alert
Earthquake	2011-03-21	Badakhshan Province	2/3
Earthquake	2010-11-15	Nangarhar Province	2/3
Flood	2011-06-10	Western Heart	1/3

Source: Global Disaster Alert and Coordination System - 3 = 1000 or more people killed or 80000 or more people displaced. 2 = 100 or more people killed or 80000 or more displaced.

Food Balance Sheet

The 2011 estimate for wheat harvest is 3.26 mlnT, 28% lower than the level of 2010 and 36% lower than the record production in 2009. The total of 2011 cereal production is forecast at 4.55 mlnT, 23% below 2010 level and around 15% below the five year average. The total cereal imports in 2011/12 are forecasted to grow at 1.74 mlnT, 53% more than 2010/11 actual imports.



Source: GIEWS Country Briefs

Government Policies

The Government has planned to build up a grain reserve of some 50,000 tonnes of wheat to assist the most vulnerable people. Moreover it will provide 20,000 tonnes of animal food and 10,000 tonnes of improved wheat seeds in 14 drought-affected provinces. WFP is also assisting through its regular programs.

Consumer and market oriented measures	Building stocks
Producer oriented measures	Input support; Livestock support
Trade policy measures	n.a.
Safety net (increased or introduced)	WFP food/cash transfers

Different sources

Current events to watch (Click to see the full report)

- [Drawing Down the Flood](#)
- [Kabul street children struggle to survive](#)
- [ACCC breaks silence on peace in Kandahar region](#)
- [United Nations marks 64 years of partnership with Paki...](#)
- [Ghazi High School Reopens with a New Look](#)

For more information, contact: Information-for-action@fao.org
Website: www.foodsec.org

Powered By the [GIEWS Workstation](#)

The Programme on Linking Information and Decision Making to Improve Food Security is funded by the European Union and implemented by the Food and Agriculture Organization of the United Nations.

* For a further analysis of prices in Afghanistan please see: [Annex](#)