

Maps of crop areas in 2000 and 2010 across England

Overview

This report provides maps of key agricultural activity across England, comparing spatial distributions in 2000 to 2010. Results are aggregated to 5km² level to give a good degree of resolution, whilst preserving the confidentiality of survey respondents.

Data limitations

The data are collected through the annual Defra June Survey of Agriculture of key agricultural activities (land areas, livestock numbers, labour force). In Census years (2000 and 2010), all farms in England were surveyed and responses were received from around 70% of farms. Estimates were made for the non-respondents and these maps are based on the combined dataset of actual responses and estimates.

Estimates are also made of the precise location of the land areas and livestock numbers so the values presented in these maps will not accurately reflect the actual activity in the 5km² grid square. They should be treated as a general picture for illustrative purposes only.

More detailed methodology of the June survey is available at

<http://www.defra.gov.uk/statistics/foodfarm/landuselivestock/junesurvey/junesurveyresults/>

Contents

	Years available	Page number	England areas ('000 ha)		% change 2010/2000
			2000	2010	
Wheat	2000 and 2010	2 - 3	1 957	1 792	-8%
Barley	2000 and 2010	4 - 5	752	586	-22%
Winter oilseed rape	2000 and 2010	6 - 7	265	582	+120%
Maize	2000 and 2010	8 - 9	98	146	+50%
Regional map of England		10			

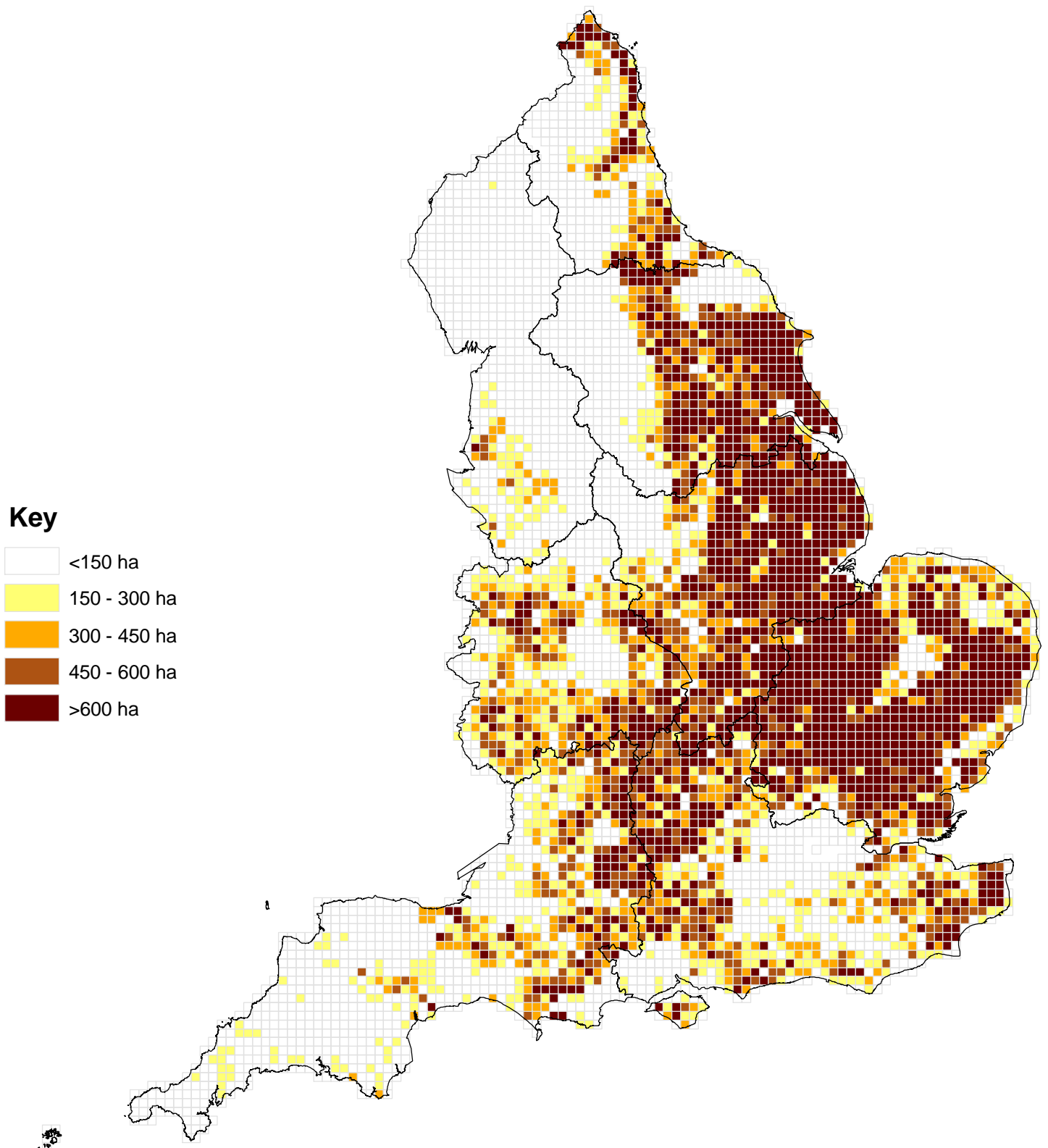
Further detailed statistics

Many other breakdowns of data from the June Survey of Agriculture can be found at

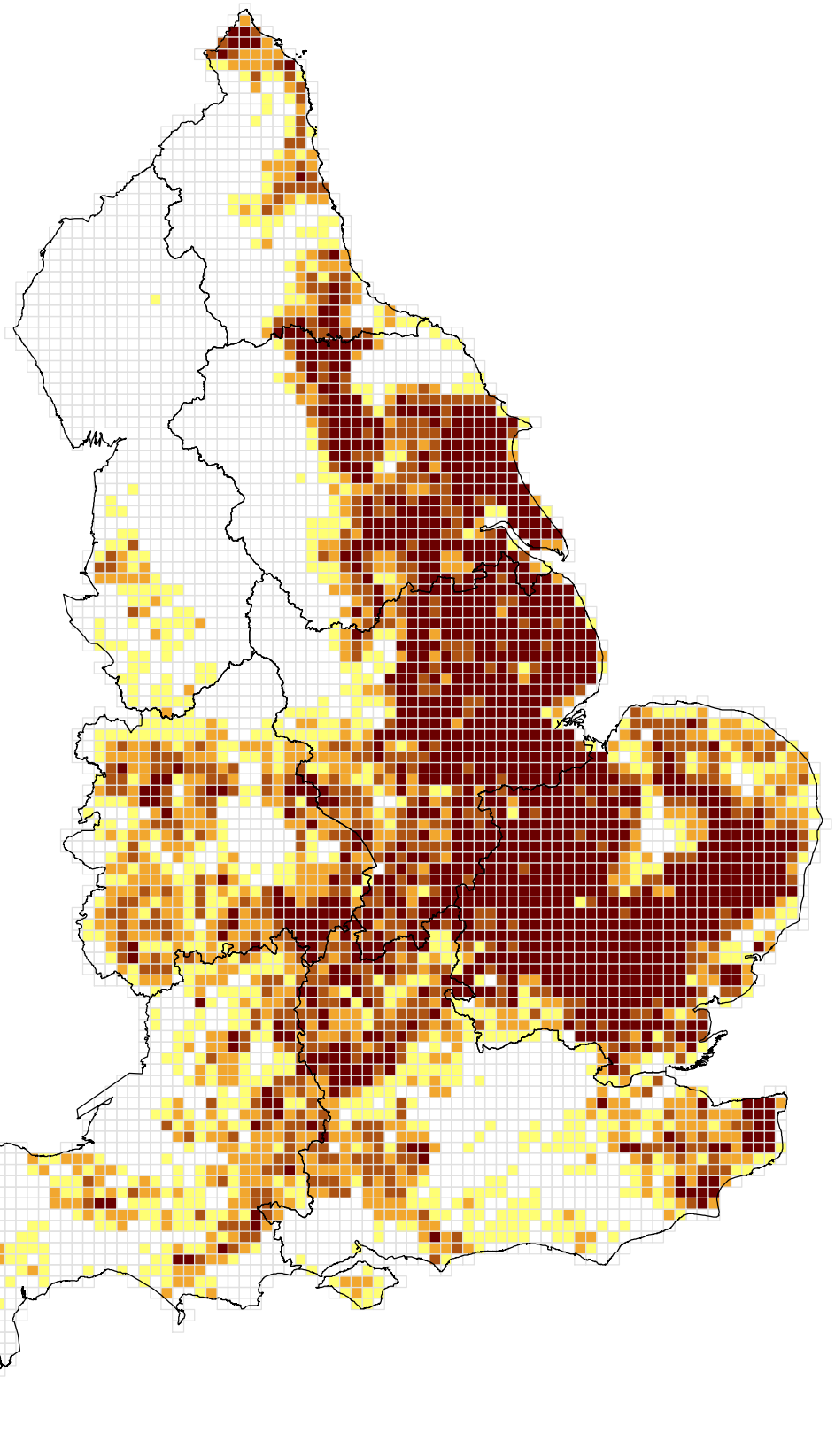
<http://www.defra.gov.uk/statistics/foodfarm/landuselivestock/junesurvey/junesurveyresults/>

Alternatively, for more information please e-mail: farming-statistics@defra.gsi.gov.uk or telephone: ++44 (0)1904 455332

Area of wheat (hectares) by 5km² grid squares: England 2000



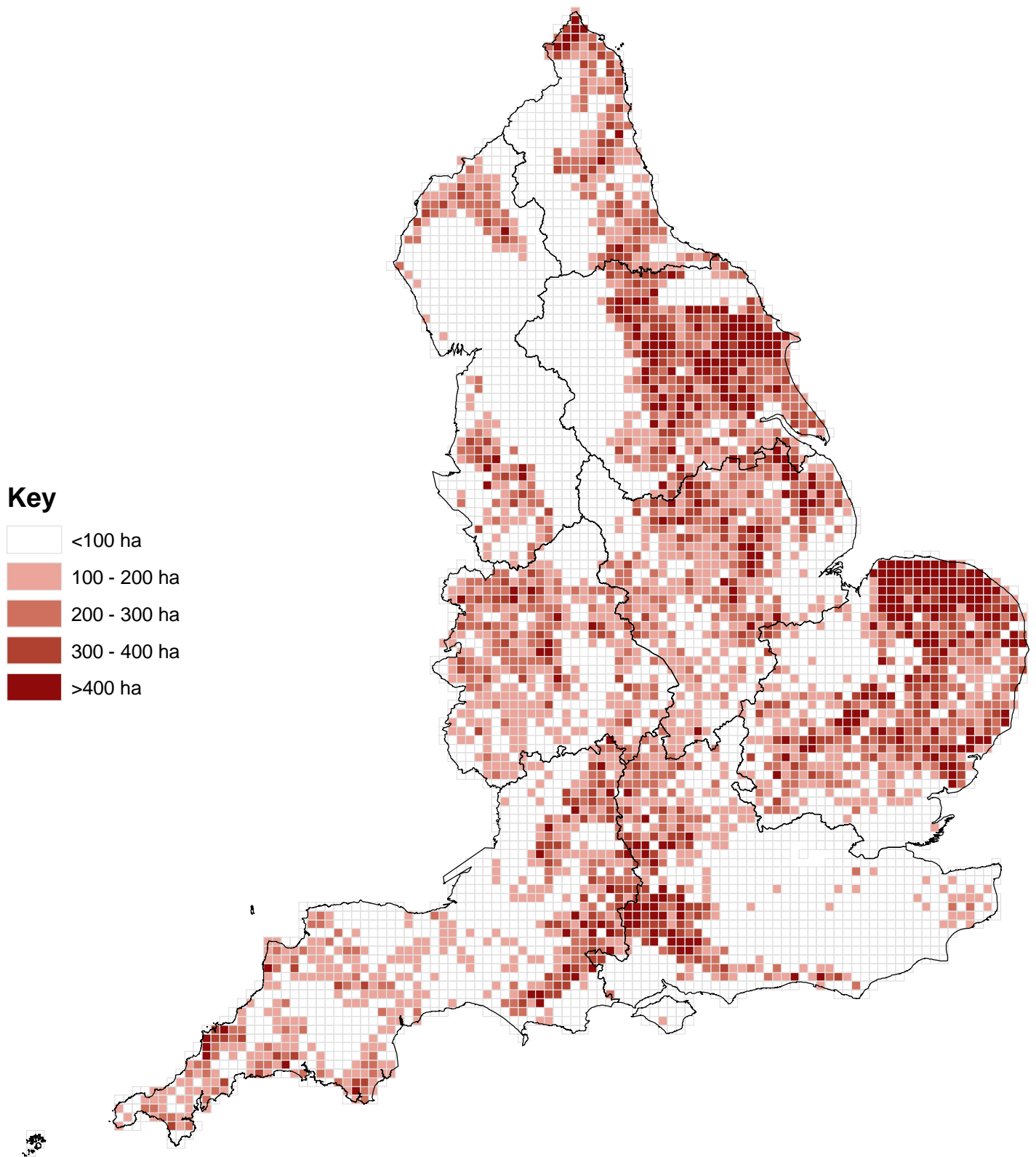
Area of wheat (hectares) by 5km² grid squares: England 2010



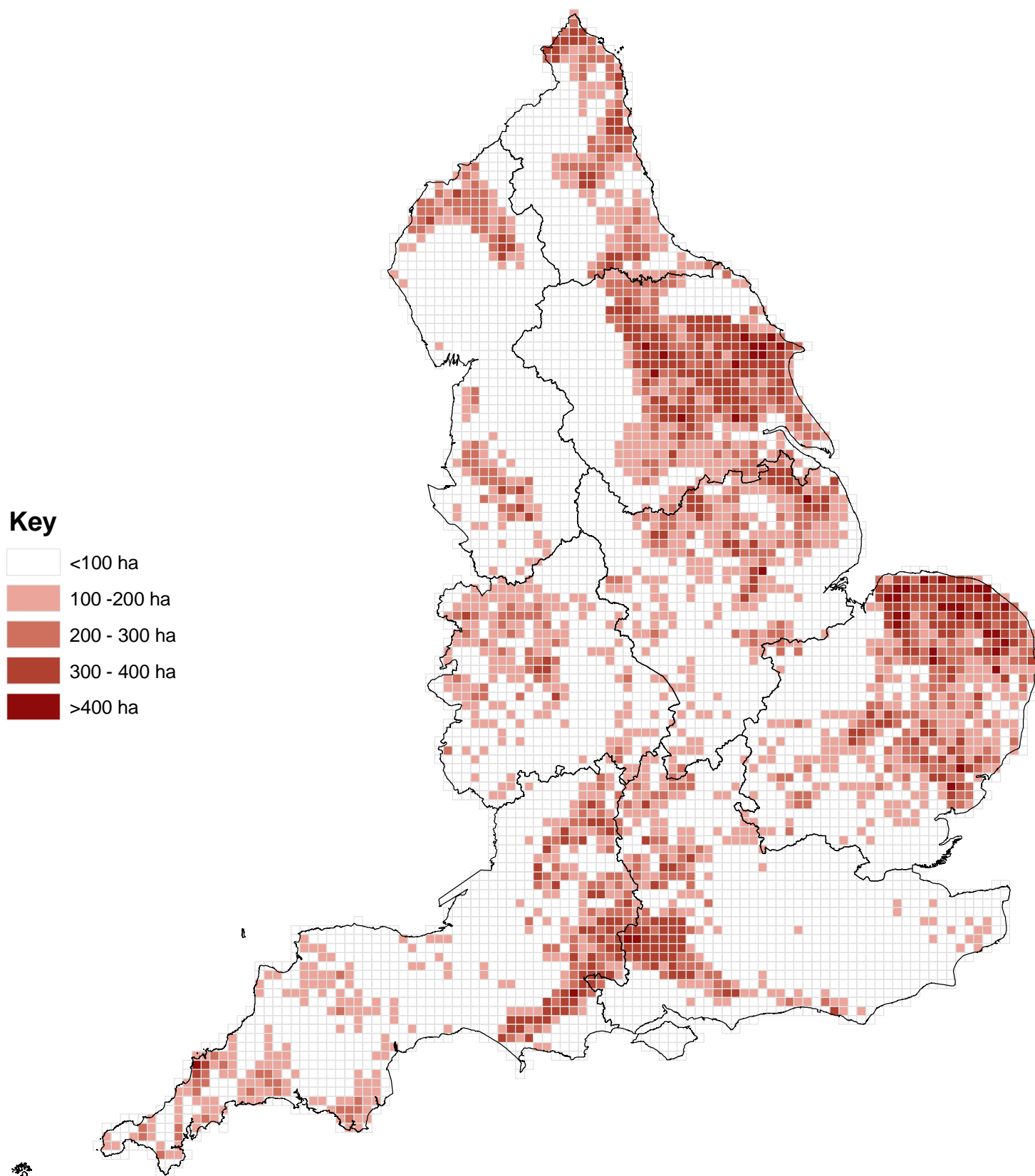
Key



Area of barley (hectares) by 5km² grid squares: England 2000

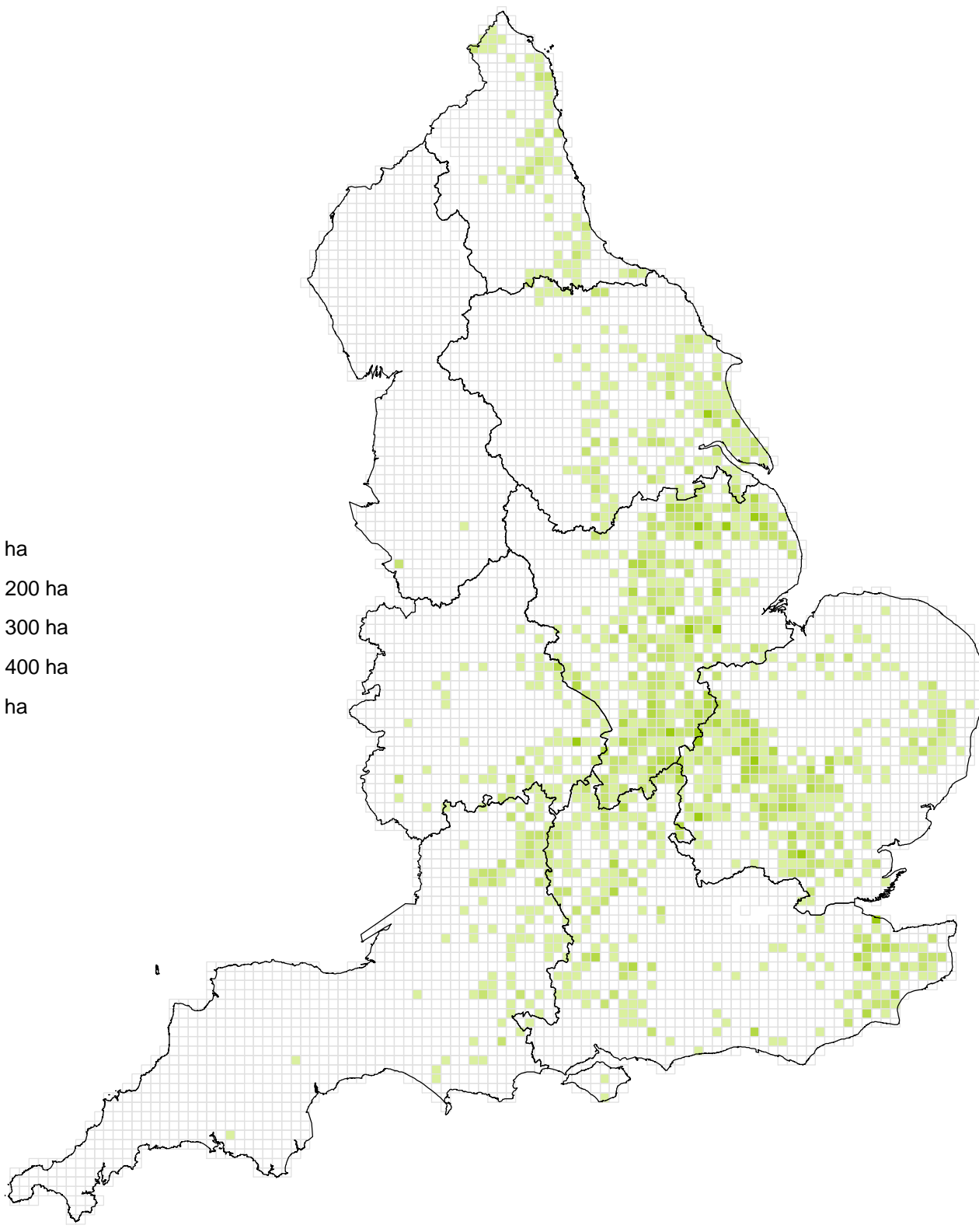


Area of barley (hectares) by 5km² grid squares: England 2010



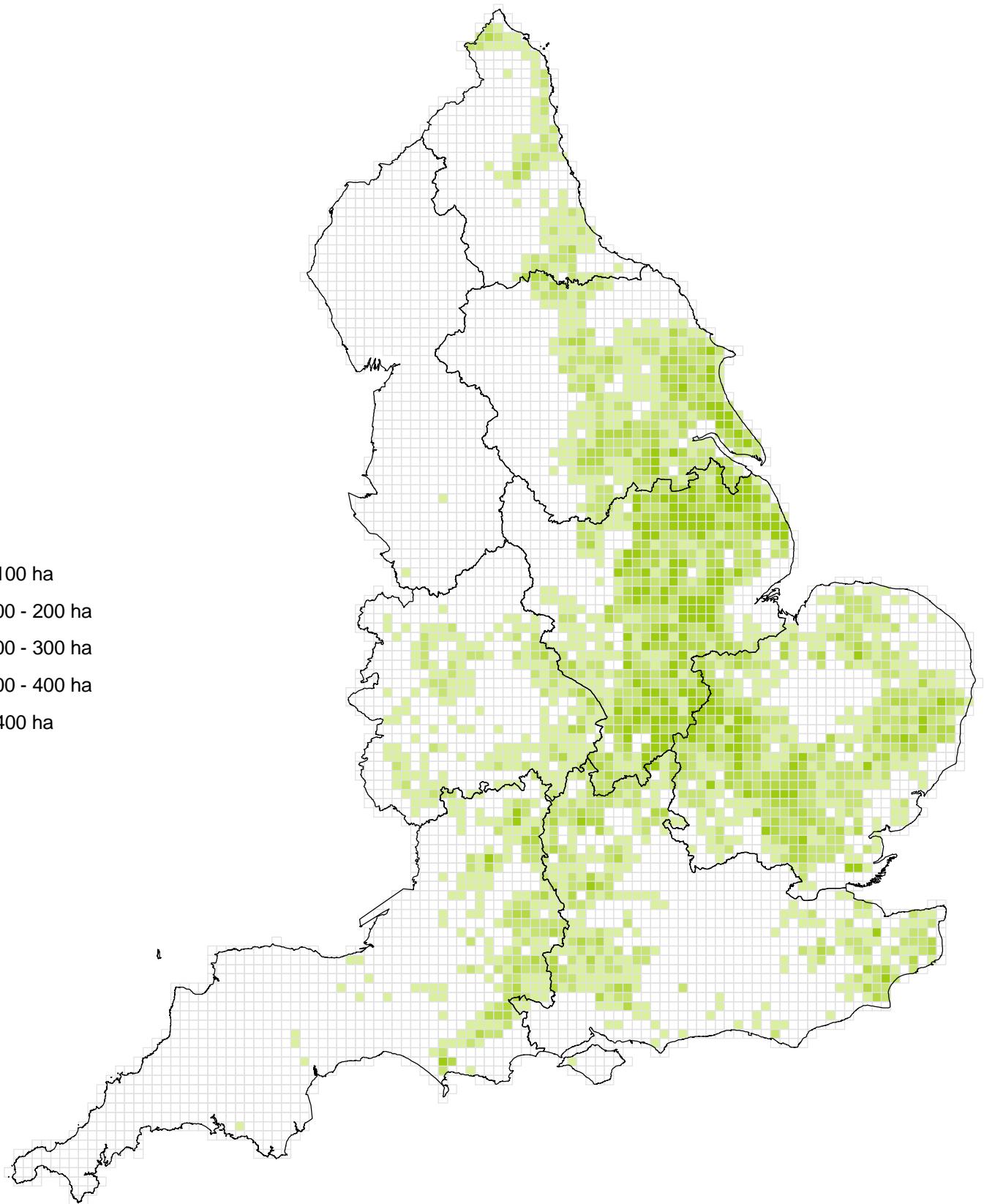
Area of winter oilseed rape (hectares) by 5km² grid squares: England 2000

Key

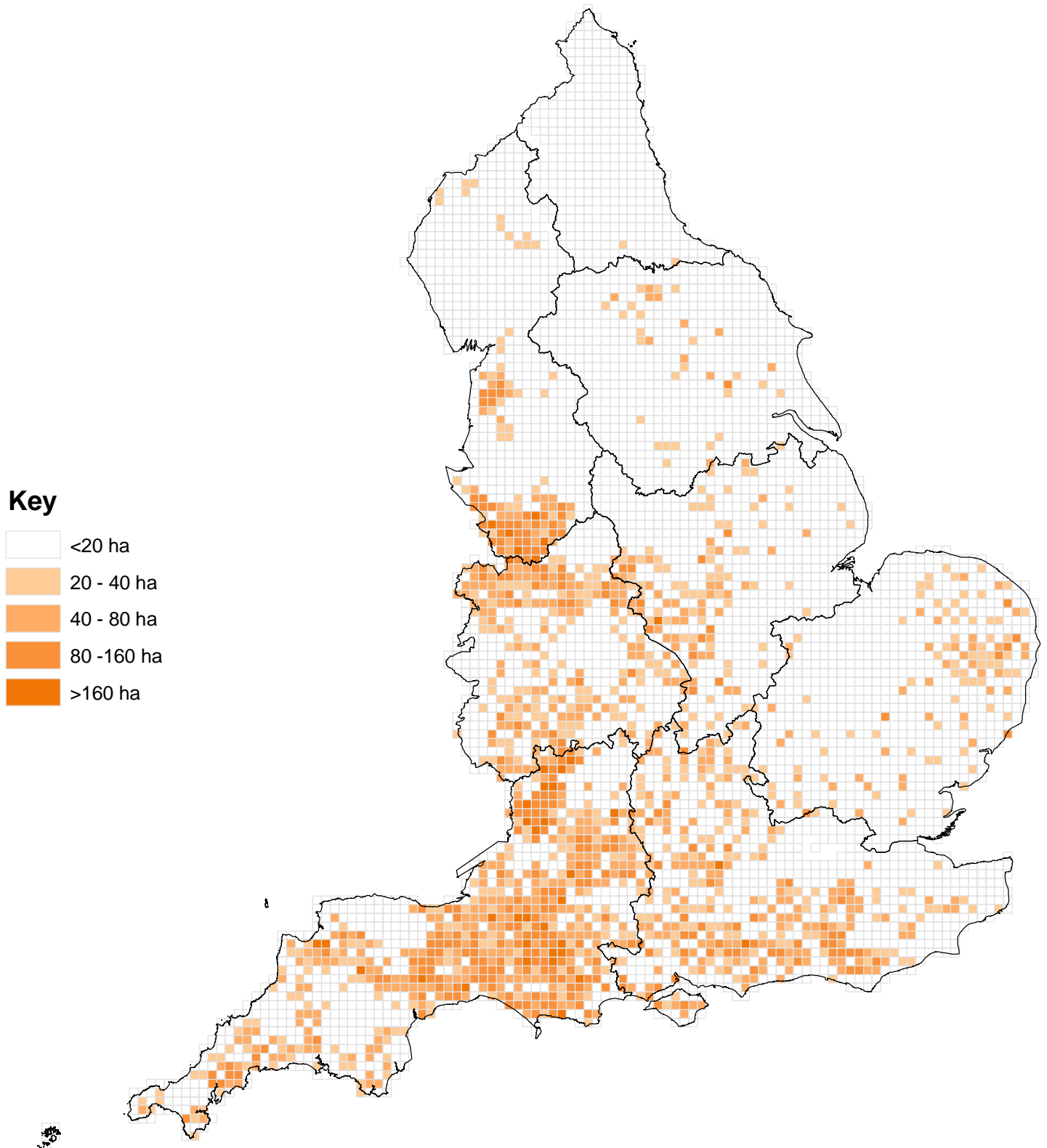


Area of winter oilseed rape (hectares) by 5km² grid squares: England 2010

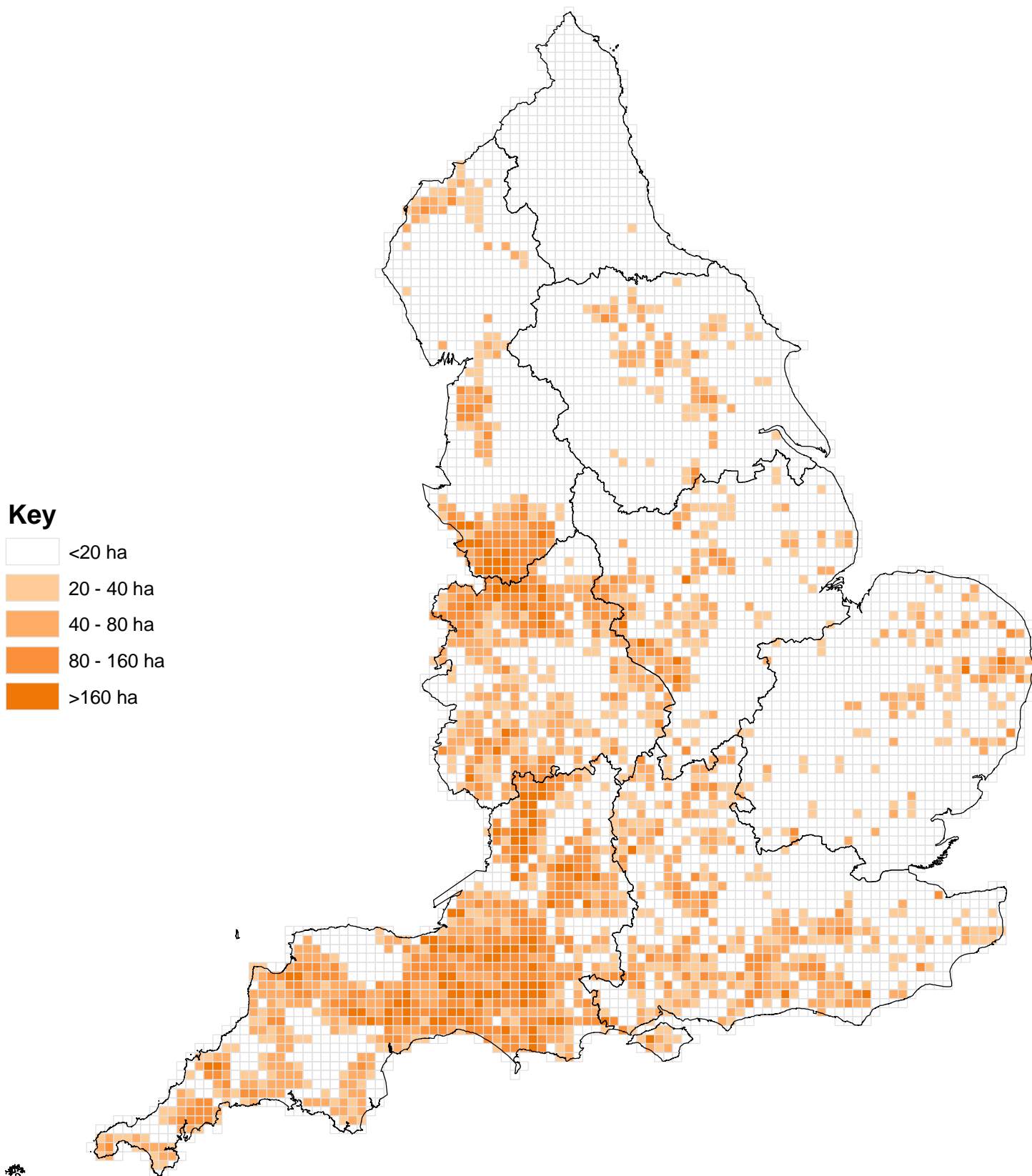
Key



Area of maize (hectares) by 5km² grid squares: England 2000



Area of maize (hectares) by 5km² grid squares: England 2010



Government Office Regions: England



Maps of livestock populations in 2000 and 2010 across England

Overview

This report provides maps of key agricultural activity across England, comparing spatial distributions in 2000 to 2010. Results are aggregated to 5km² level to give a good degree of resolution, whilst preserving the confidentiality of survey respondents.

Data limitations

The data are collected through the annual Defra June Survey of Agriculture of key agricultural activities (land areas, livestock numbers, labour force). In Census years (2000 and 2010), all farms in England were surveyed and responses were received from around 70% of farms. Estimates were made for the non-respondents and these maps are based on the combined dataset of actual responses and estimates.

Estimates are also made of the precise location of the land areas and livestock numbers so the values presented in these maps will not accurately reflect the actual activity in the 5km² grid square. They should be treated as a general picture for illustrative purposes only.

More detailed methodology of the June survey is available at

<http://www.defra.gov.uk/statistics/foodfarm/landuselivestock/junesurvey/junesurveyresults/>

Contents

	Years available	Page number	England livestock population ('000 head)		% change 2010/2000
			2000	2010	
Cattle	2000 and 2010	2 - 3	6 156	5 542	-10%
Dairy herd	2000 and 2010	4 - 5	1 575	1 160	-26%
Beef herd	2000 and 2010	6 - 7	781	756	-3%
Pigs	2000 and 2010	8 - 9	5 442	3 606	-34%
Sheep	2000 and 2010	10 - 11	19 144	14240	-26%
Poultry	2010 only	12	129 696	125 173	-3%
Regional map of England		13			

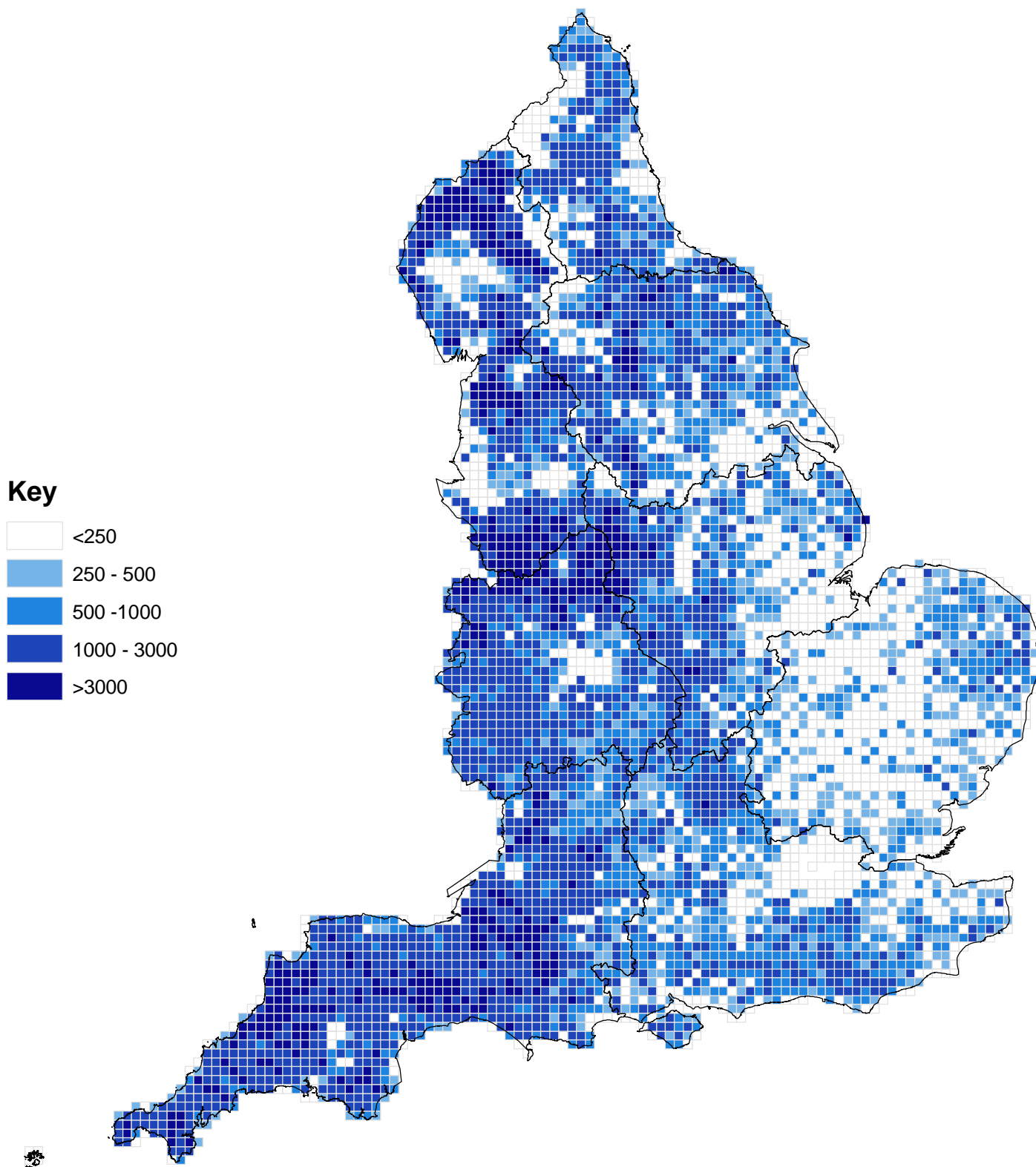
Further detailed statistics

Many other breakdowns of data from the June Survey of Agriculture can be found at

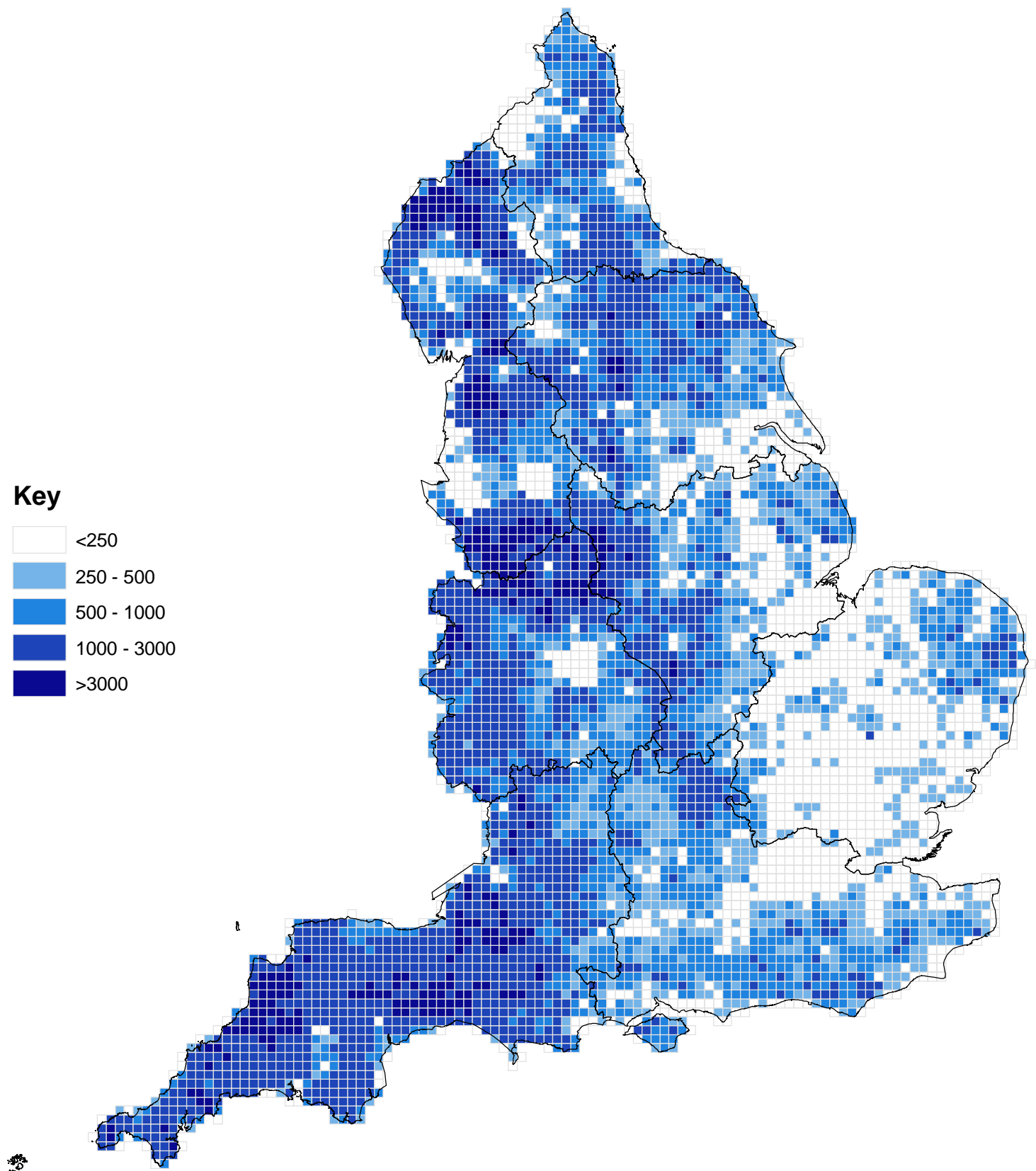
<http://www.defra.gov.uk/statistics/foodfarm/landuselivestock/junesurvey/junesurveyresults/>

Alternatively, for more information please e-mail: farming-statistics@defra.gsi.gov.uk or telephone: ++44 (0)1904 455332

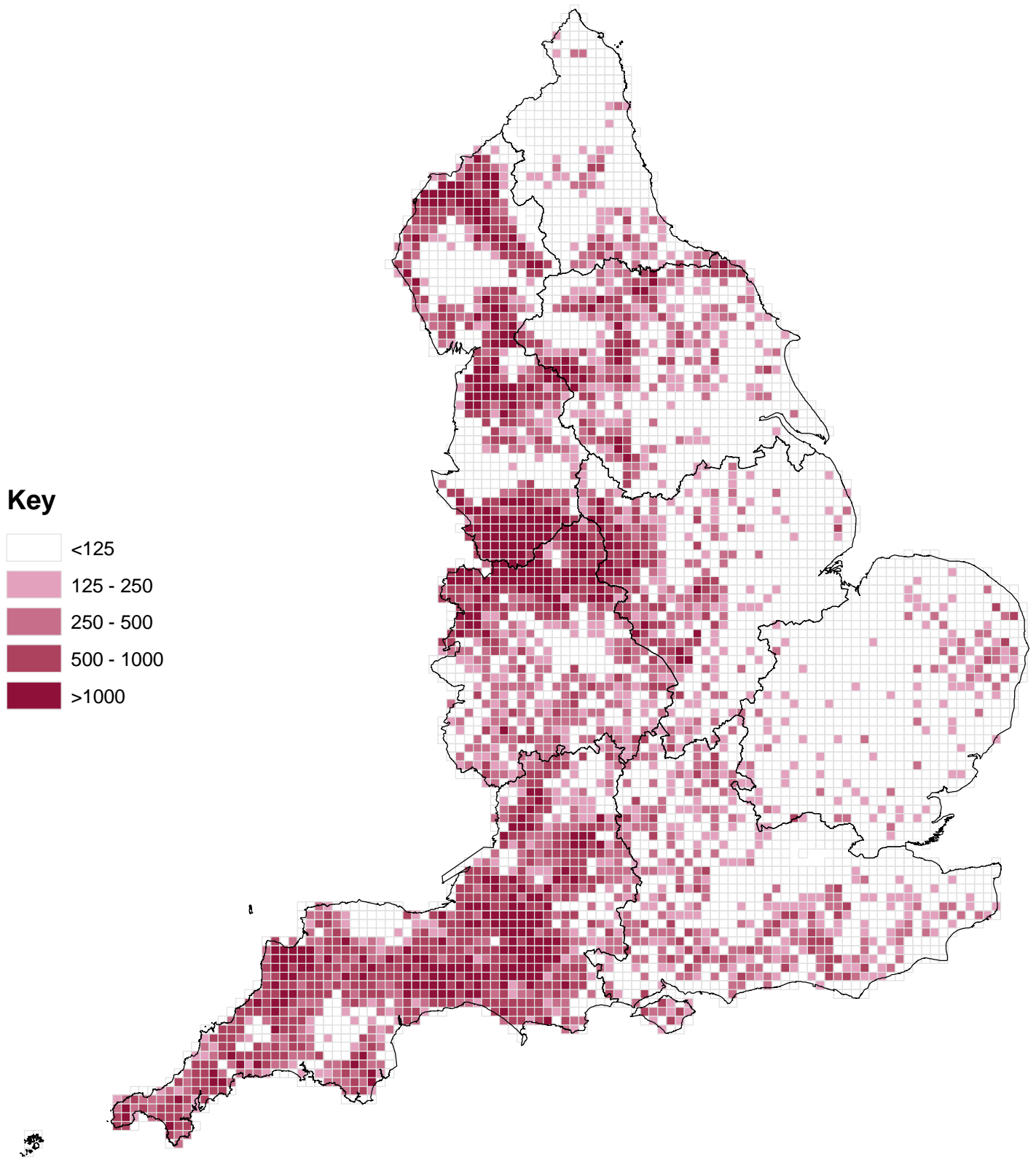
Number of cattle by 5km² grid squares: England 2000



Number of cattle by 5km² grid squares: England 2010

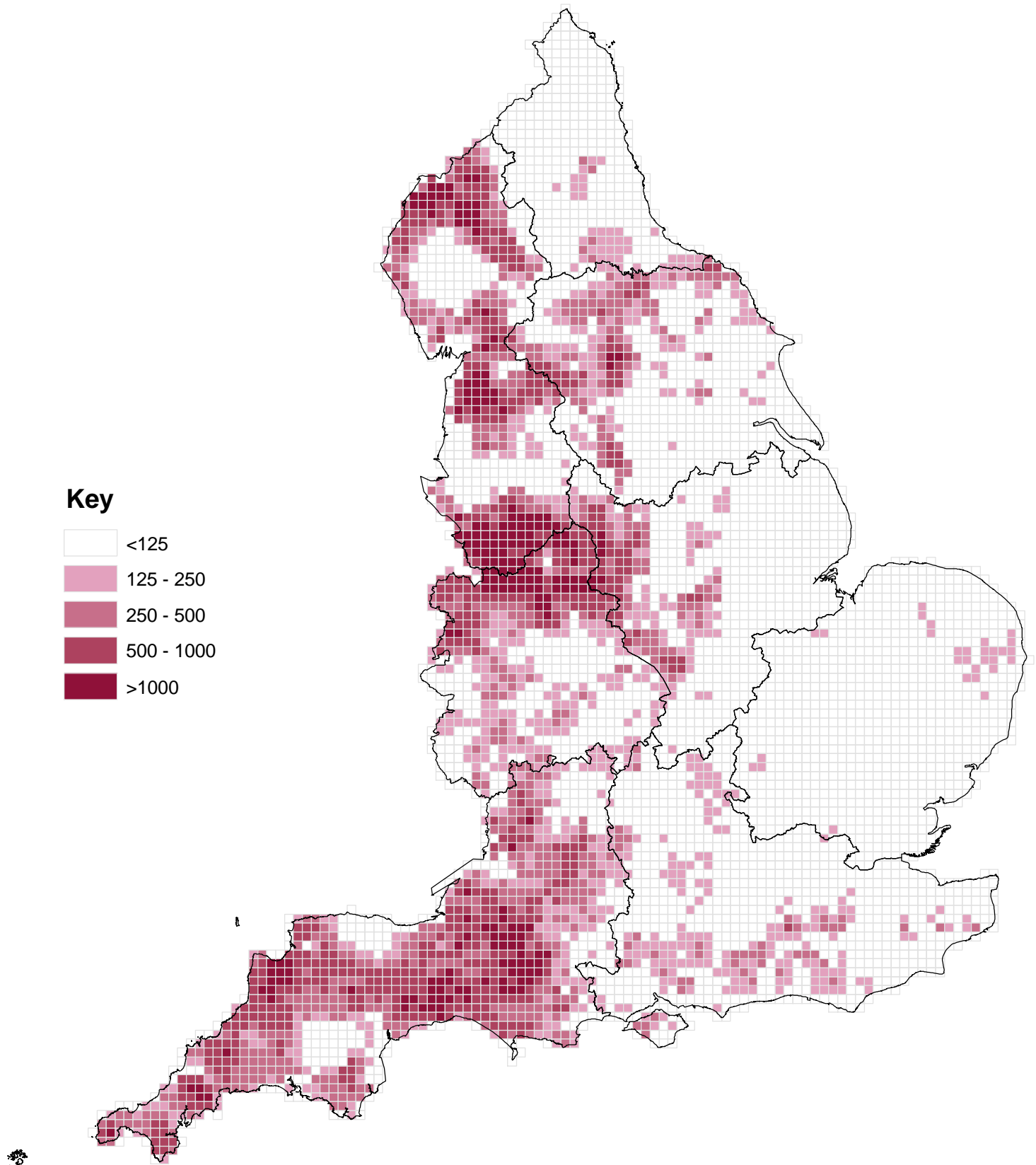


Number of dairy cattle by 5km² grid squares: England 2000



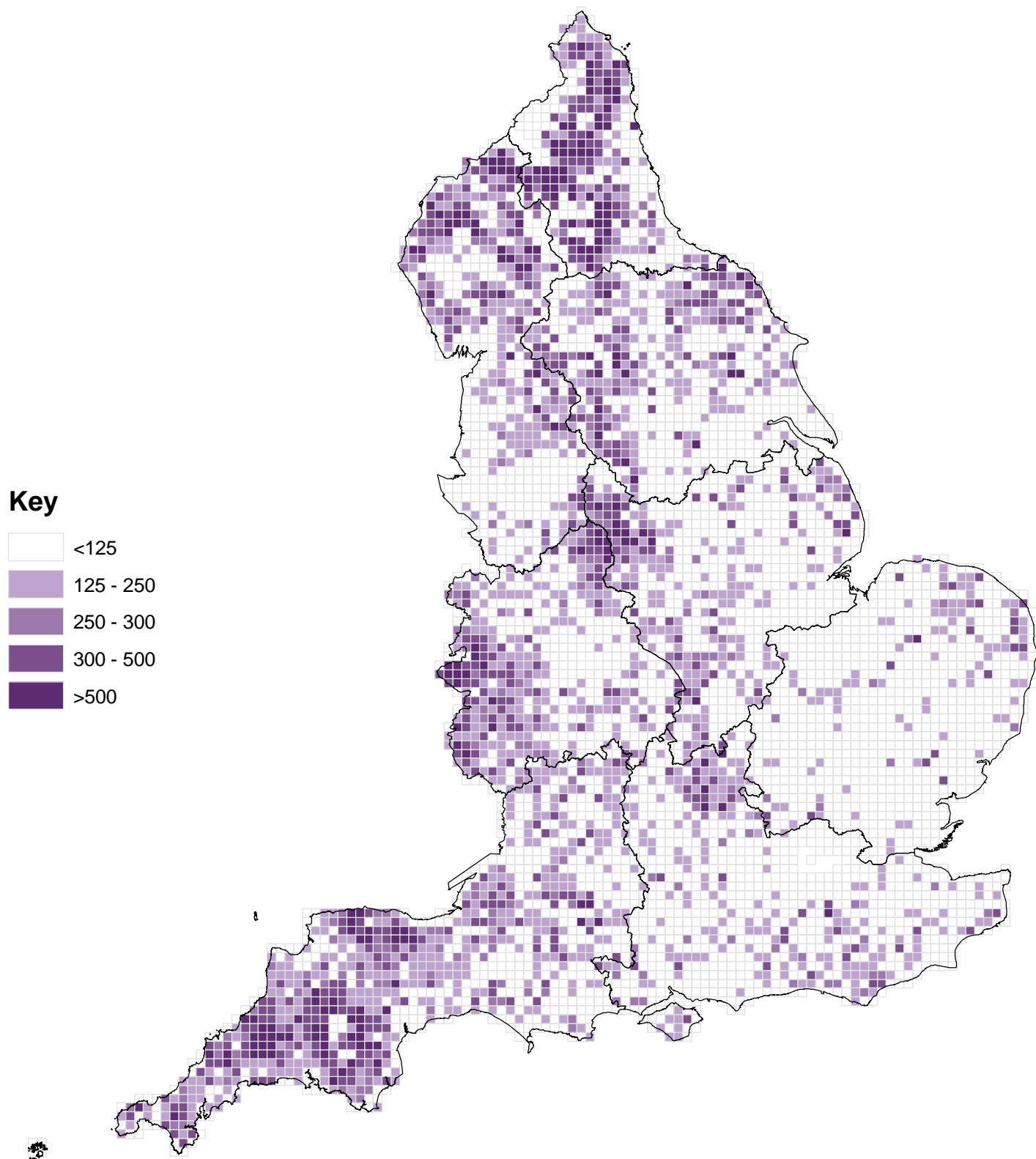
Source: Defra June Survey of Agriculture (changed to Cattle Tracing System from 2005 onwards)
Definition of dairy cattle is all female dairy cattle and heifers that have calved i.e. the main milking herd.

Number of dairy cattle by 5km² grid squares: England 2010



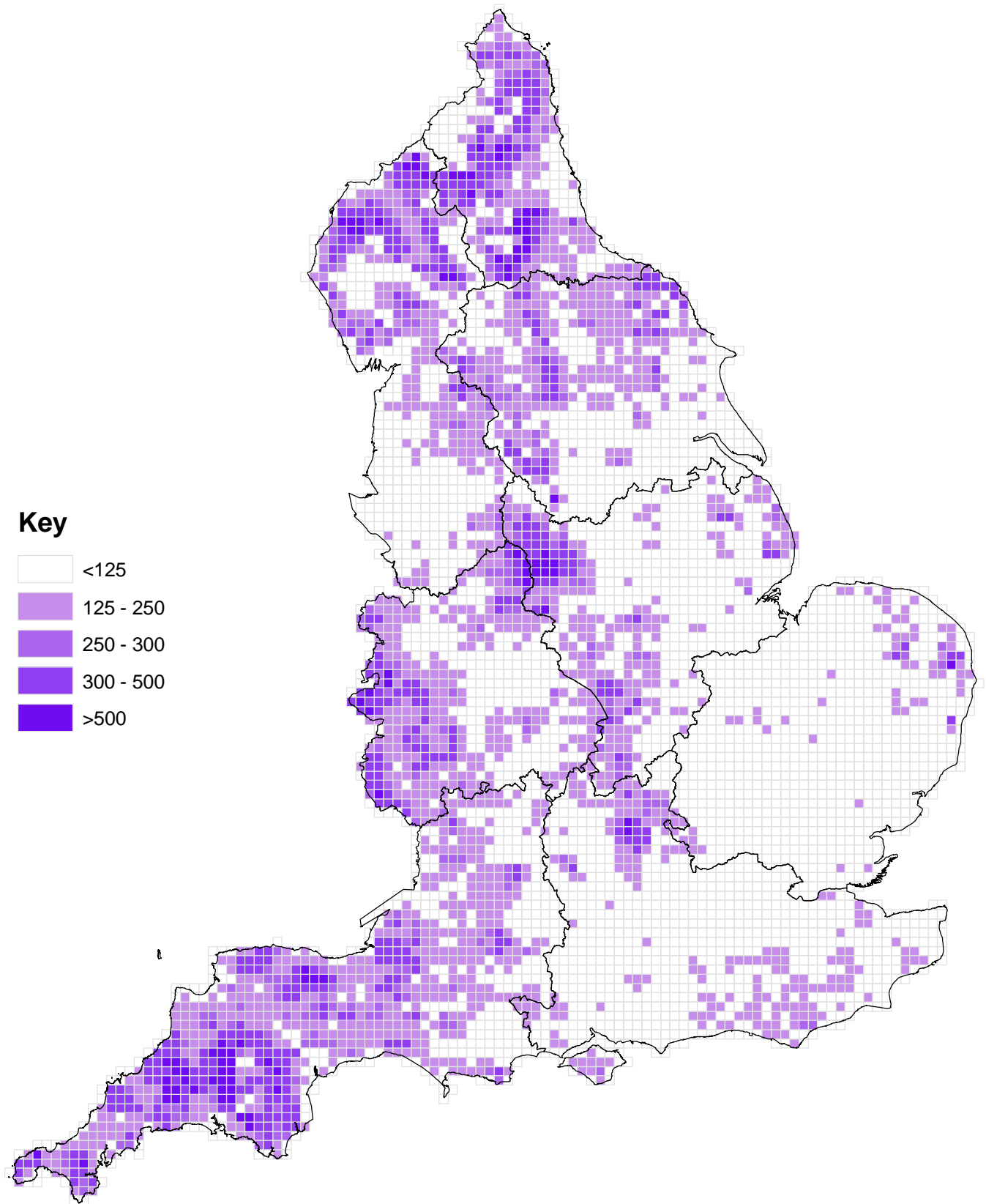
Source: Defra Cattle Tracing System and June Survey of Agriculture
Definition of dairy cattle is female dairy cattle over two years old with offspring i.e. the main milking herd.

Number of beef cattle by 5km² grid squares: England 2000



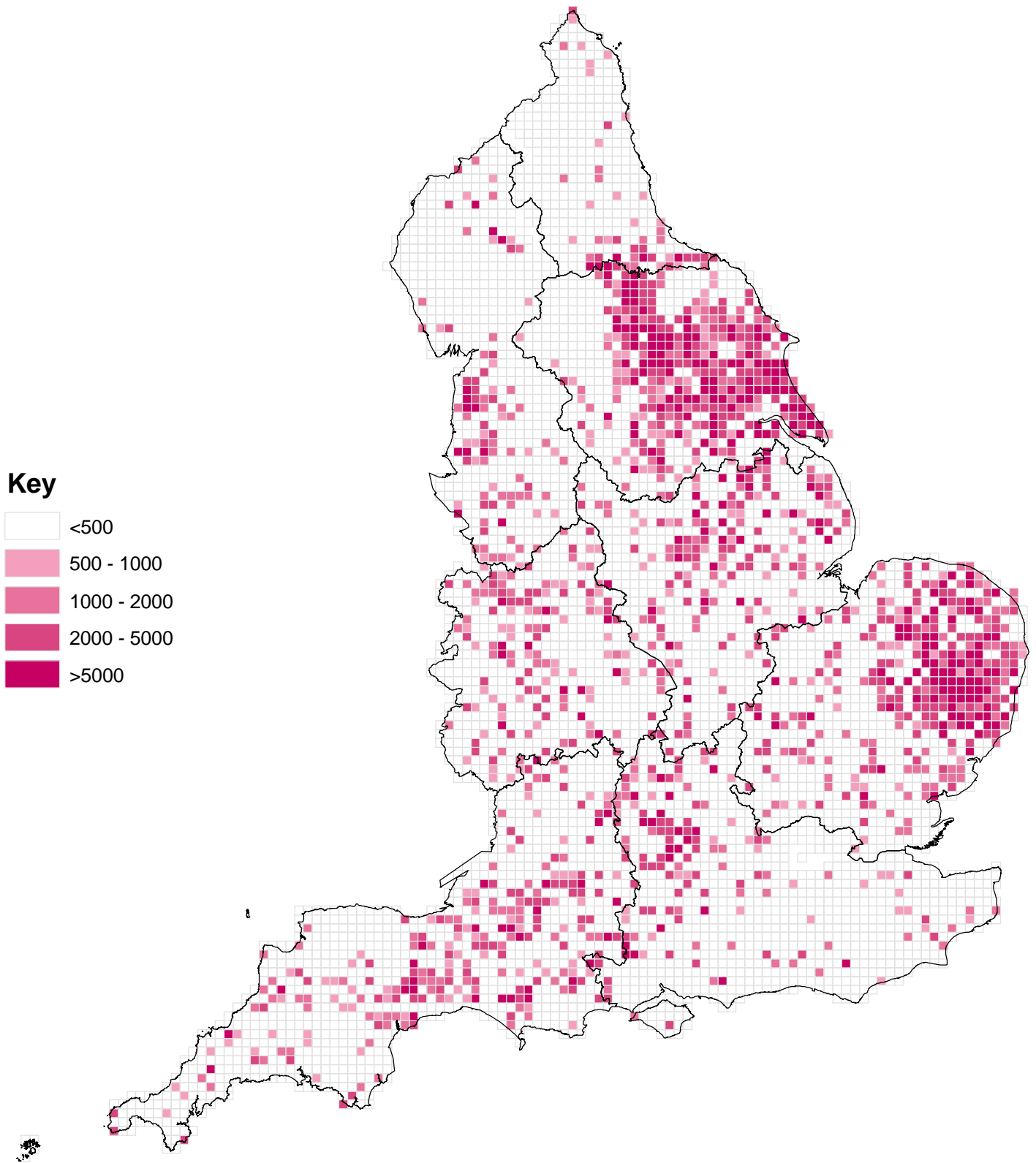
Source: Defra June Survey of Agriculture (changed to Cattle Tracing System from 2005 onwards)
Definition of beef cattle is all female beef cattle and heifers that have calved i.e. the main beef breeding herd.

Number of beef cattle by 5km² grid squares: England 2010

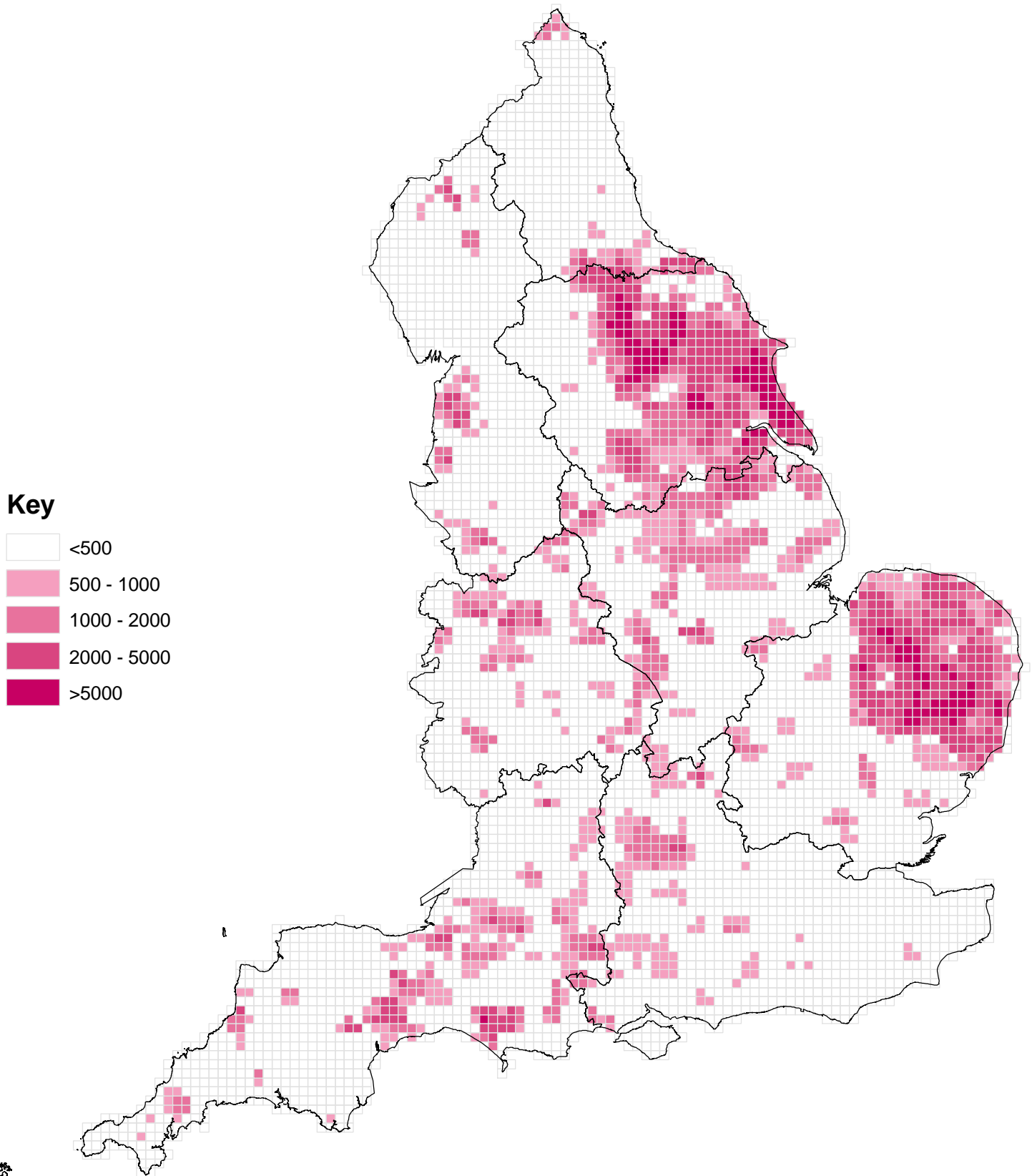


Source: Defra Cattle Tracing System and June Survey of Agriculture
Definition of beef cattle is female beef cattle over two years old with offspring i.e. the main beef breeding herd.

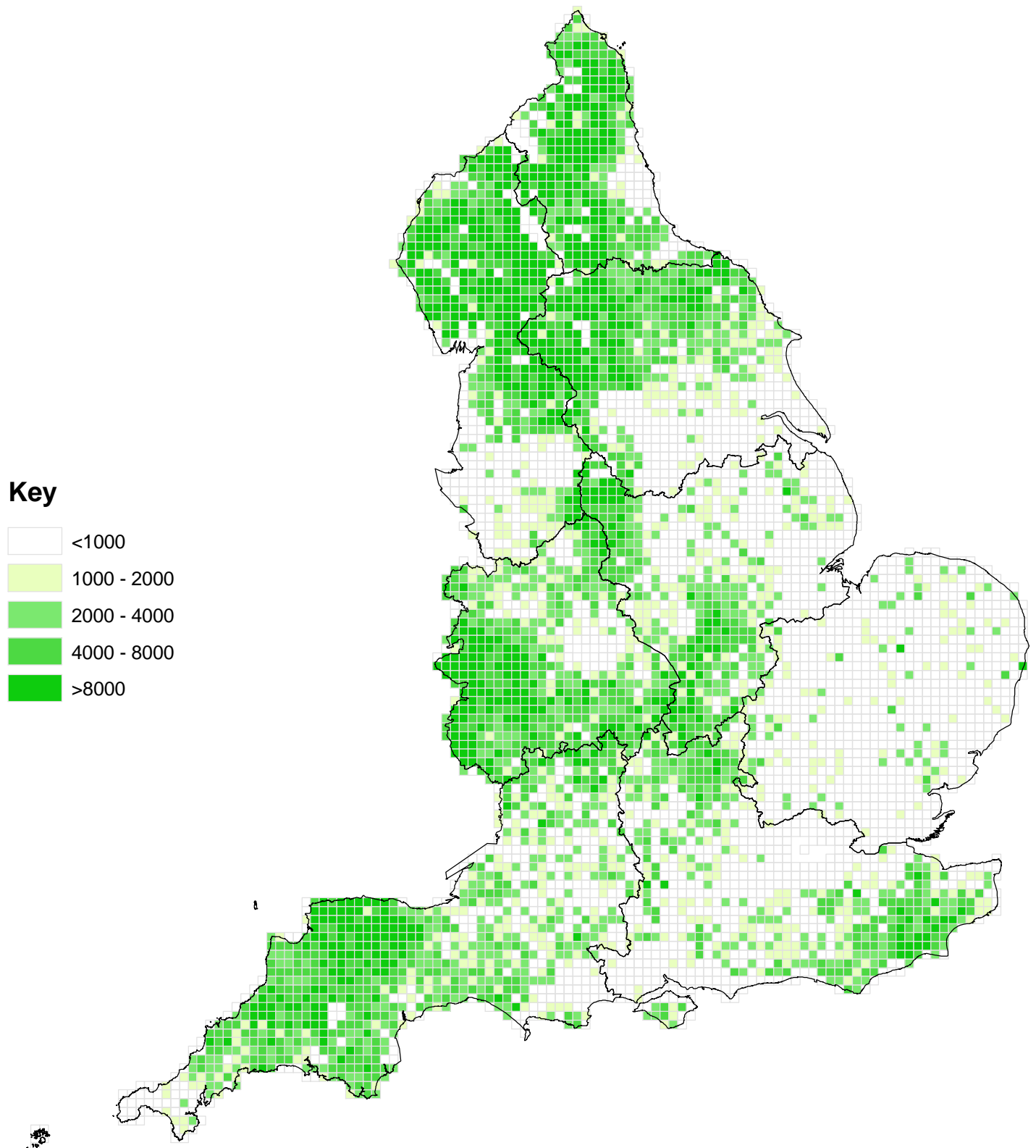
Number of pigs by 5km² grid squares: England 2000



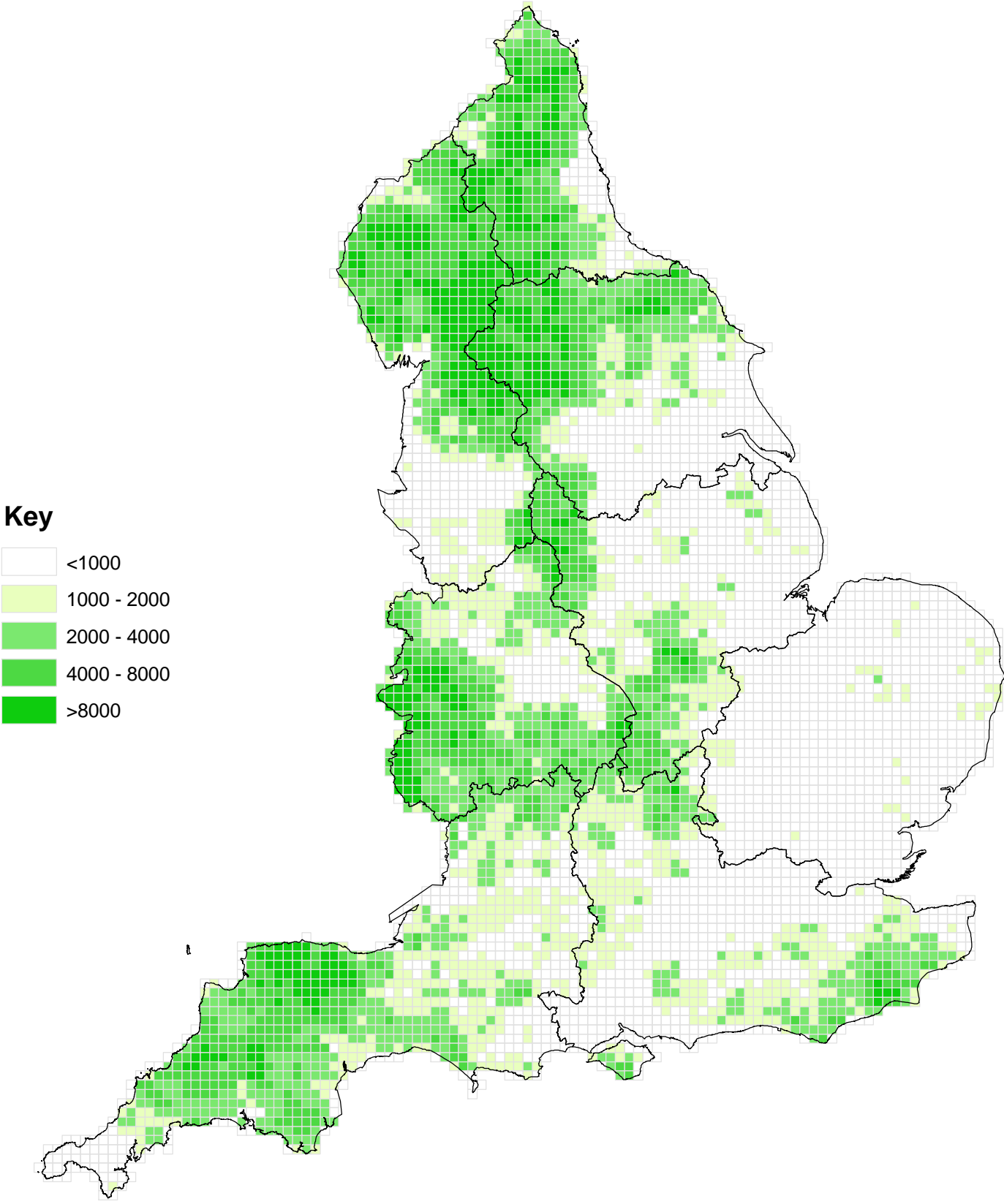
Number of pigs by 5km² grid squares: England 2010



Number of sheep by 5km² grid squares: England 2000

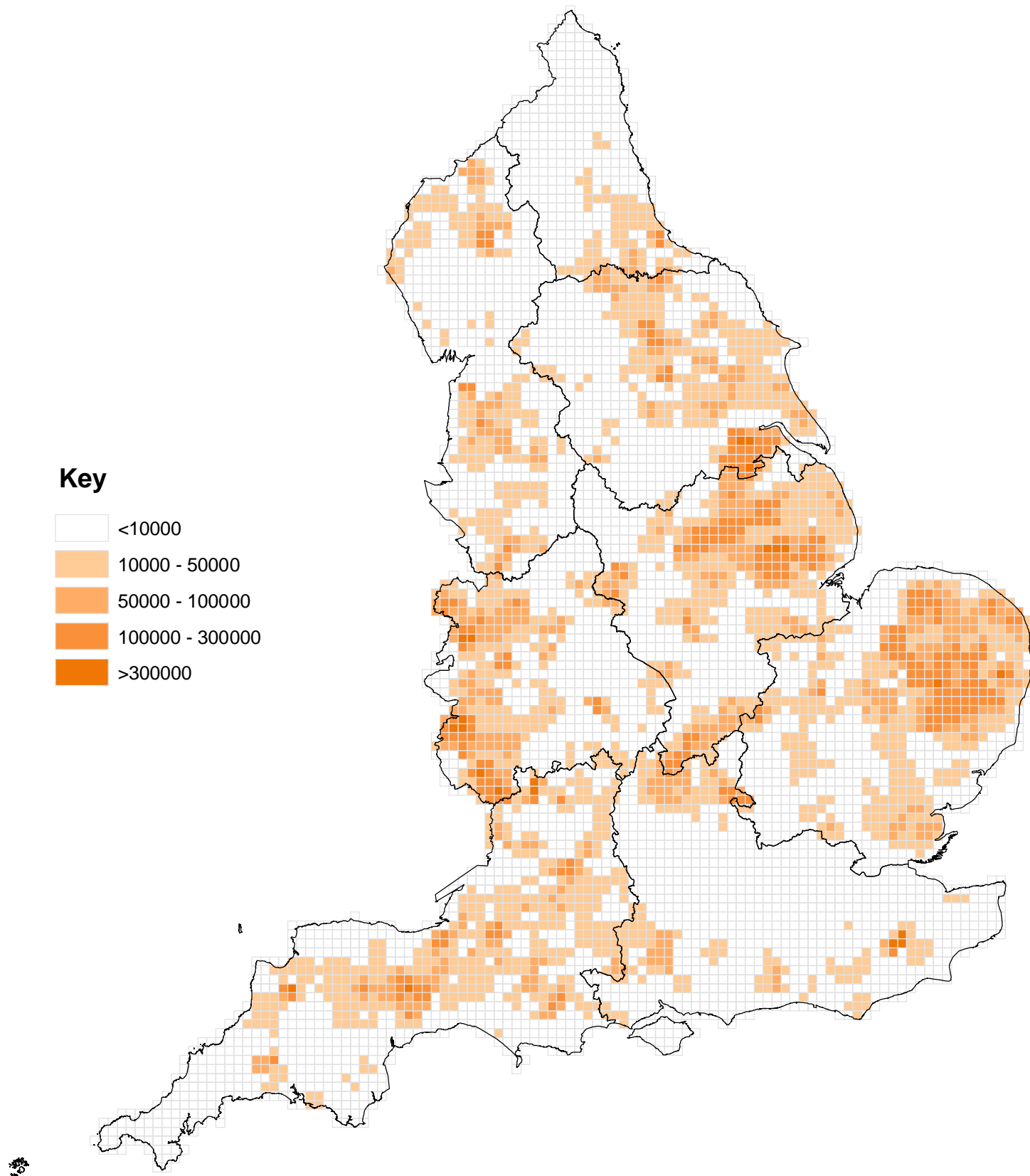


Number of sheep by 5km2 grid squares: England 2010



Source: Defra June Survey of Agriculture
Crown Copyright. All rights reserved. Defra Licence no. 100018880 2011

Number of poultry by 5km² grid squares: England 2010



Government Office Regions: England

