

An assessment of land degradation was carried out following the UNCCD’s Good Practice Guidance (GPG) version 2 for the SDG Indicator 15.3.1 (Proportion of land that is degraded over total land area) for Sennar state in Sudan for baseline period of 2000 - 2015. Using the default parameters in the SEPAL SDG 15.3.1 module, one out all out statistical principle was used to combine all the sub-indicators of productivity, land cover and soil organic carbon. Percentages of land degraded within the water sheds located in the state were computed.

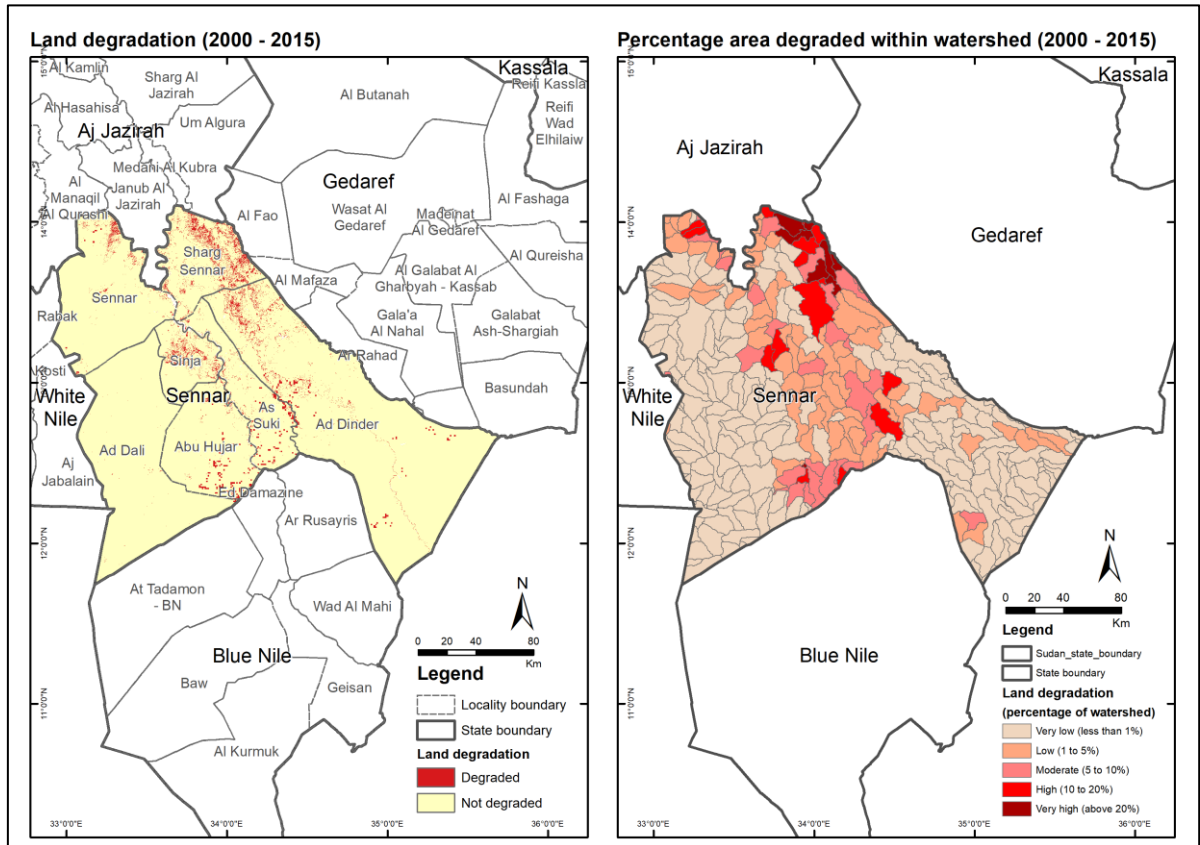


Figure 1: Status of land degradation in the baseline period¹

Table 1: Land degradation statistics

Degradation level	Number of watershed	Total area (km ²)	Degraded area	
			km ²	% of total
Very low (less than 1% area degraded)	221	30 297	40	0.1
Low (1 to 5% area degraded)	72	10 823	279	2.6
Moderate (5 to 10% area degraded)	29	4 446	332	7.5
High (10 to 20% area degraded)	17	2 858	358	12.5
Very high (above 20% area degraded)	8	890	227	25.5
Total	347	49 315	1 235	2.5

Key Findings

- From 2000 to 2015, total 1 235 km² of land were degraded in Sennar state.
- Eight watersheds were found to experience very high land degradation where more than 20% of the area were degraded during 2000 to 2015.

Prepared by Rashed Jalal, Amit Ghosh, Vineet Kumar, Rutendo Mukaratirwa, Fatima Mushtaq, Kennedy Igbokwe and Matieu Henry in support to Sudan smallholders and agro pastoralist value chain support in the face of climate change (GCP/SUD/098/NOR), Food and Agriculture Organization of United Nations, Rome, Italy.

¹ Source: Administrative boundaries from HDX and watershed boundaries from HydroSHEDS

The boundaries and names shown, and the designations used on these map(s) do not express any opinion whatsoever on the part of FAO concerning the legal status of any country, territory, city or area or of its authorities, or concerning the delimitation of its frontiers and boundaries. Dashed lines on maps represent approximate border lines for which there may not yet be full agreement.