

## Mapping indicators for nature-based solutions soil moisture in Thanh Chuong, Viet Nam (2021)



Source: United Nations. 2020. Map of the world [online]. [Cited July 2022]

Soil moisture is obtained from Sentinel 1 to assess the proxy for water availability in soil; which can also be used as a proxy to calculate crop yield, crop productivity, water stress and drought in a region. The assessment was made in soil moisture mapping module in SEPAL<sup>1</sup> for 2021 at a spatial resolution of 100 meters in the Thanh Chuong district of Viet Nam and aggregated into townlets for comparative assessments.

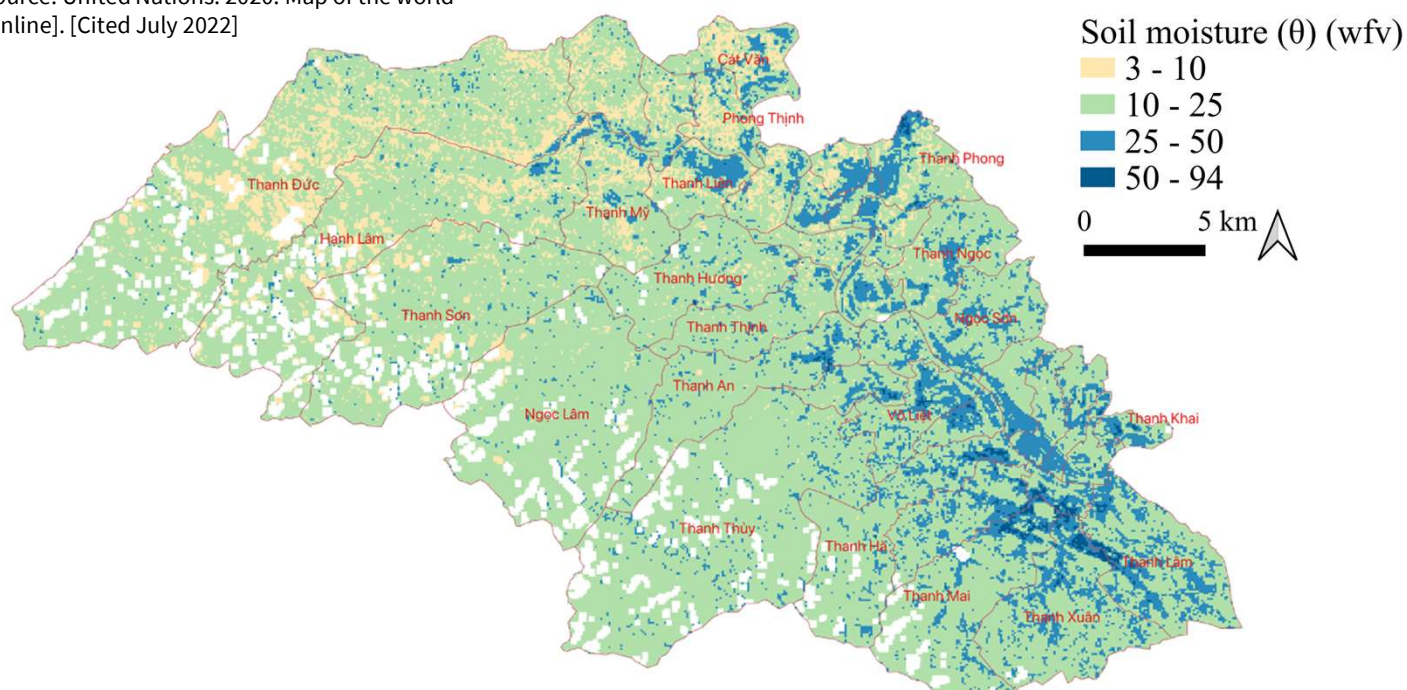


Figure 1: Spatial extent of average annual soil moisture in Thanh Chuong district for 2021 in Viet Nam<sup>2</sup>

Table 1: Average annual soil moisture for 2021 in Thanh Chuong

	Townlets	Range (wfv)		Average (wfv)
		Min.	Max.	
Top four	T. Giang	11	58	30.4
	T. Khai	12	58	27.6
	T. Long	10	55	26.6
	T. Lam	12	59	25.4
Bottom four	T. Duc	3	64	13.7
	Hanh Lam	4	55	14.1
	T. Nho	5	42	14.5
	T. Son	6	44	15.1

T. refers to Thanh

### Key Findings

- Average annual soil moisture in Thanh Chuong district ranges from 3-94 wfv with an average of 20.7 wfv at townlet level.
- Townlets with higher soil moisture by annual average are Thanh Giang, Thanh Khai, Thanh Long and Thanh Lam.

Acknowledgement: The assessments were developed with the financial support of the government of Ireland.

Prepared by Shrijwal Adhikari, Amit Ghosh, Fatima Mushtaq, Beau Damen, Matieu Henry in close collaboration with World Agroforestry (ICRAF) and Asian Institute of Technology (AIT) for Monitoring of geospatial indicators for nature-based solutions. Food and Agriculture Organization of United Nations, Rome, Italy.

<sup>1</sup> Soil moisture mapping

<sup>2</sup> GADM. The boundaries and names shown, and the designations used on these map(s) do not express any opinion whatsoever on the part of FAO concerning the legal status of any country, territory, city or area or of its authorities, or concerning the delimitation of its frontiers and boundaries. Dashed lines on maps represent approximate border lines for which there may not yet be full agreement.