

# Price Monitoring and Analysis Country Brief

**Haiti**

September 2011 - February 2012

## Key Messages

- Although imported rice and maize prices remained stable in recent months, prices were much above prices on the international market.
- Food security conditions are stable in most regions following locally produced crops, but pockets of food insecurity exist in several areas that experienced low production.
- Although the number of persons still living in tents has reduced from 1.5 million to approximately a half a million, those people are still living in camps with extreme sanitation and health conditions.
- The Government supports production through an input subsidy scheme.

## Background

The total population of Haiti is around 10 million with a 1% annual growth rate. The undernourished population reached 57% while 54% lives below the poverty line. The proportion of the population with access to improved sanitation is 17%.

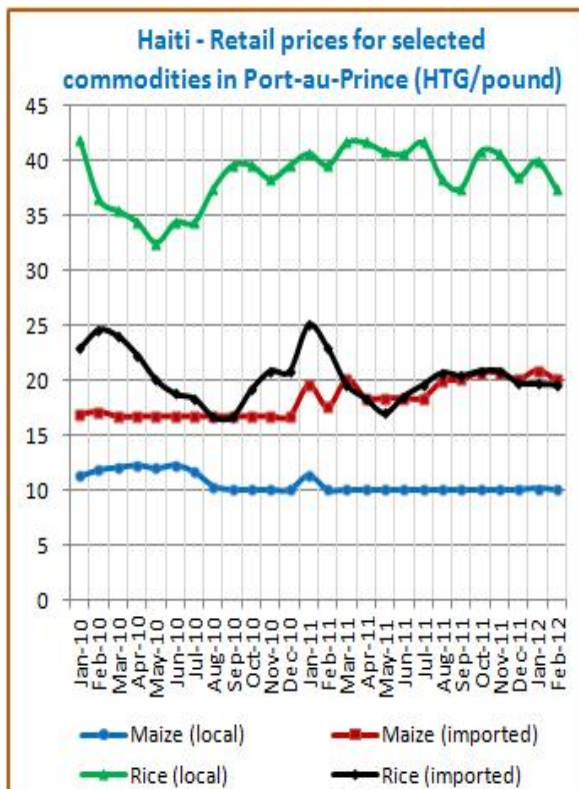
Economic Indicators	View Data
Total Population (millions) - 2010 (WB)	9.993
Population growth rate - 2010 (WB)	1%
GNI per capita, \$ PPP - 2010 (WB)	1110
Population below 1\$ PPP per day - 2001 (MDGI)	54%
Rural population - 2010 (WB)	50%
Agriculture, value added (% of GDP) - 2003 (WB)	27%

Food Consumption	
Undernourished Population - 2006/2008(FAO)	57%
Cereal share in total dietary energy consumption - 2007 (FAO)	46%
Meat share in total dietary energy consumption - 2007 (FAO)	4%

Health Indicators	
Pop. with sustainable access to improved sanitation - 2008 (WHO)	17%
Life expectancy at birth (years) both sexes - 2009 (WHO)	62
Pop. with access to improved drinking water sources - 2008 (WHO)	63%
Prevalence of HIV among adults aged >= 15 years - 2009 (WHO)	1.9%

## Prices

Prices of imported rice stabilized in most markets between Dec and Feb 2012. In Port-au-Prince, prices declined by 3% to 19.79 HTG/Livre in Dec and remained stable for the following months. In February, rice prices were 104% higher than those of U.S. Rice Long Grain 2.4%. Price of local rice showed mixed trends, but in Port au Prince it decreased by 6% in Jan and was at 37.5 HTG/Livre in Feb. Local maize price kept at 10 HTG/Livre (Sept/Feb) while imported maize prices had a small increase in Jan, returning to its previous levels in Feb (20 HTG/Kg). In February, also imported maize prices were 295% above prices of Maize US No2 Yellow.



Source: GIEWS Country Briefs

## Food Security Situation Assessment

Food security conditions have generally improved in recent months thanks to locally produced crops in September/October in main producing areas, leading to well stocked markets. However, food insecurity pockets exist both in rural and urban areas in the departments of Northwest, Artibonite, Centre and Southeast due to poor production, FEWSNET estimated a Stressed level of food insecurity (IPC Phase 2). Additionally, approximately half a million internally displaced people in camps in the metropolitan area of Port-au-Prince face Stressed conditions. GIEWS reports severe localized food insecurity. FAO hunger map and IFPRI GHI highlight very high and alarming prevalence of hunger.

### CURRENT EMERGENCY ASSESSMENT

Exceptional shortfall in aggregate food production supplies	Widespread lack of access	Severe localized food insecurity	FAO/GIEWS CPFS 2011
---	---------------------------	----------------------------------	---------------------

Food availability is increasing in almost parts of the country due to current harvests. Food stocks are expected to last through at least March/April, after which time the lean season typically begins, and lasting until June. ...[more](#) [FEWSNET](#)

### SCALE OF HUNGER (% of Undernourishment)

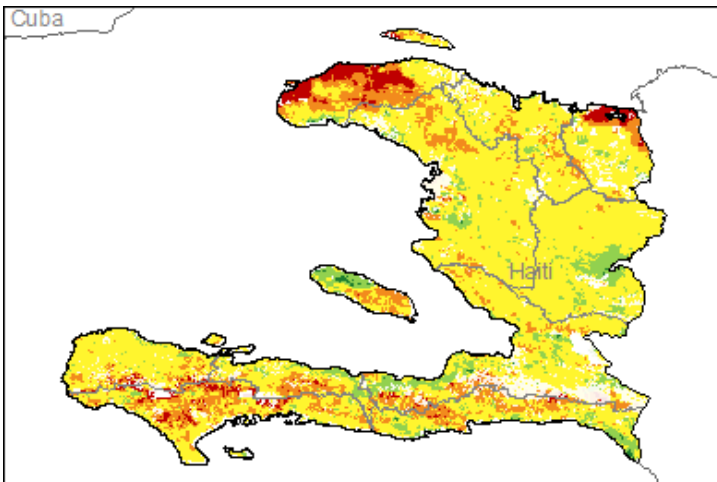
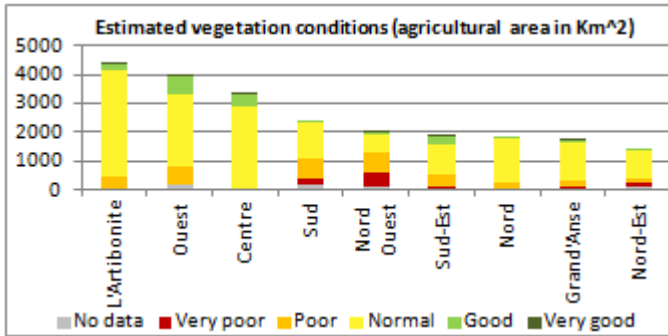
Very high (>= 35%)	High (25-34%)	Moderately high (15-24%)	Moderately low (5-14%)	Very low (< 5% under.)	FAO Hunger Map
--------------------	---------------	--------------------------	------------------------	------------------------	----------------

FAO Hunger Map classifies all countries of the world into five based on % of population undernourished.

Extremely alarming	Alarming	Serious	Moderate	Low	IFPRI/2011 GHI
--------------------	----------	---------	----------	-----	----------------

### Vegetation Condition

According to the reference cropping calendars, at the moment this area is out of cropping season. Normal conditions are observed throughout the country with limited areas of good conditions in Ouest, and Centre. Poor conditions are locally detected. The general indicator of vegetation condition provided below is the absolute difference between the NDVI for February 2012 and the average of the last 10 years, calculated on the agricultural zones derived from the GLOBCOVER 2005 database (ESA).



Source: JRC MARS – FoodSec

#### Crop phase in the reference period

<b>Sowing</b>	Beans (Third)
<b>Growing</b>	Sorghum - Beans (Third)
<b>Harvesting</b>	Beans (Third) - Rice (second) - Sorghum

### Natural Disasters, Drought and Conflicts

The IOM has undertaken an Assisted Voluntary Return program and so far, about 2,000 people have returned to Haiti. However it is estimated that still about 520,000 people are living in camps. Although a significant drop in the cholera fatality rate has been registered, outbreaks are expected during the rain and hurricane season from May to November.

Refugees and IDPs	2008	2009	2010
Total in the country	3	23	5
Total outside the country	35737	36015	33095

Source: UNHCR Statistical Online Population Database, United Nations High Commissioner for Refugees (UNHCR), Data extracted on 01/03/2012.

Disaster Type (last year)	Date	Location	Alert
Earthquake	2010-11-12	Ouest Province	1/3
Earthquake	2010-09-21	Ouest	1/3
Flood	2010-11-05	Western Haiti	1/3

Source: Global Disaster Alert and Coordination System - 3 = 1000 or more people killed or 800000 or more people displaced. 2 = 100 or more people killed or 80000 or more displaced.

### Food Balance Sheet

Total cereal 2011 production is estimated at 607,000 tones, some 19% above the average of the last five years, but about 7 % below the bumper levels in 2010. Maize production in 2011 remained satisfactory at 349,000 tones, 22% higher than the average of the last five years, but 4% lower than 2010 output mainly due to insufficient rains.

Haiti				
Cereal production				
	2006-2010 average	2010	2011 estimate	change 2011/2010
	000 tonnes		percent	
Maize	271	365	349	-4
Rice (paddy)	124	141	120	-15
Sorghum	118	146	138	-5
Others	0	0	0	0
<b>Total</b>	<b>512</b>	<b>652</b>	<b>607</b>	<b>-7</b>

Note: percentage change calculated from unrounded data.  
Source: FAO/GIEWS Country Cereal Balance Sheets

Source: GIEWS Country Briefs

### Government Policies

The Government, together with its main partners has supported production with input subsidies. However, though the Ministry is prepared to finance the cost of chemical fertilizer, funding has been cut by 50% from last year.

Consumer and market oriented measures	n.a.
Producer oriented measures	Input subsidies; Mechanization; Fertilizer distribution
Trade policy measures	n.a.
Safety net (increased or introduced)	n.a.

Different sources

#### Current events to watch (Click to see the full report)

[Haiti: Début des pluies en Haiti : les Nations Unies s...](#)  
[Haiti: Remontée de l'insécurité, 147 morts violentes d...](#)  
[Haiti: Le Conseil des droits de l'homme adopte les rés...](#)  
[World: IADB plans natural disaster fund for Latin Amer...](#)  
[Haiti: Haiti receives advice from UN economists on att...](#)

For more information, contact: [Information-for-action@fao.org](mailto:Information-for-action@fao.org)  
 Website: [www.foodsec.org](http://www.foodsec.org)

Powered By the **GIEWS Workstation**

The Programme on Linking Information and Decision Making to Improve Food Security is funded by the European Union and implemented by the Food and Agriculture Organization of the United Nations.