

Price Monitoring and Analysis Country Brief

Mali

May-August 2011

Key Messages

- Thanks to the 2010 bumper crop, cereal prices remained relatively low, though slightly increasing due to seasonal patterns.
- Food security is generally stable, but pockets of food insecurity exist particularly in pastoral areas due to lean season and water shortages. Agencies classify the food security situation as stressed (IPC Phase 2).
- Conflict in Libya has posed a threat to internal security due to the return of armed groups fighting for Ghedafi.
- The Government is supporting the 2011-2012 agricultural season with its input subsidy program.

Background

The total population is 15 million with a growth rate of 3% per annum. An estimated 51% of the population lives below the poverty line of 1 \$ per day, and about 12% is estimated to be undernourished.

Economic Indicators	View Data
Total Population (millions) - 2010 (WB)	15.369
Population growth rate - 2010 (WB)	3%
GNI per capita, \$ PPP - 2010 (WB)	1020
Population below 1\$ PPP per day - 2006 (MDGI)	51%
Rural population - 2010 (WB)	66%
Agriculture, value added (% of GDP) - 2007 (WB)	36%

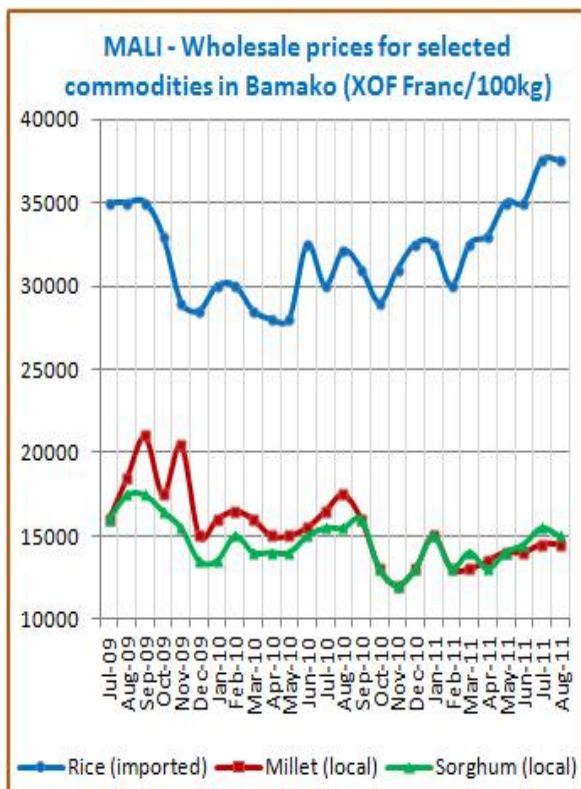
Food Consumption	
Undernourished Population - 2006/2008(FAO)	12%
Cereal share in total dietary energy consumption - 2007 (FAO)	67%
Meat share in total dietary energy consumption - 2007 (FAO)	3%

Health Indicators	
Pop. with sustainable access to improved sanitation - 2008 (WHO)	36%
Life expectancy at birth (years) both sexes - 2009 (WHO)	53
Pop. with access to improved drinking water sources - 2008 (WHO)	56%
Prevalence of HIV among adults aged >= 15 years - 2009 (WHO)	1.0%

Prices

Cereals: prices remained relatively low, though increased slightly between April and August following seasonal patterns. Imported rice prices, driven by higher international prices, increased by 14% between April and August registering 3750 Franc/100Kg. Local rice prices increased by 9% in the same period and were at 3500 Franc/100kg in August. Millet prices (14500) in Bamako were almost stable compared to previous months. Prices of imported rice in Bamako were more than doubling (74% above) the international prices of Rice Thai A1 Super.

Livestock: Instead of following seasonal downward patterns, prices of livestock remained generally stable.



Source: GIEWS Country Briefs

Food Security Situation Assessment






Generally adequate food access is reported throughout the country thanks to the good 2010/2011 grain harvest. During the lean season which extends from April through August in pastoral and agricultural areas, poor and very poor households, particularly in the Kidan and Gao regions, experienced precarious food security conditions. However thanks to programs for the redistribution of small animals to poor households and increased rainfalls, the food security situation has improved. FEWSNET classifies the situation in these areas as Stressed Phase (IPC Phase 2). FAO Hunger Map reports moderately low prevalence of undernourishment while IFPRI reports serious hunger.

CURRENT EMERGENCY ASSESSMENT

			FAO/GIEWS CPFS 2011
Exceptional shortfall in aggregate food production supplies	Widespread lack of access	Severe localized food insecurity	

Despite recent improvement, it is likely that biomass at the end of the rainy season is below average in the west. In addition, similar conditions in Mauritania may cause an early and massive ...[more](#) [FEWSNET](#)

SCALE OF HUNGER (% of Undernourishment)

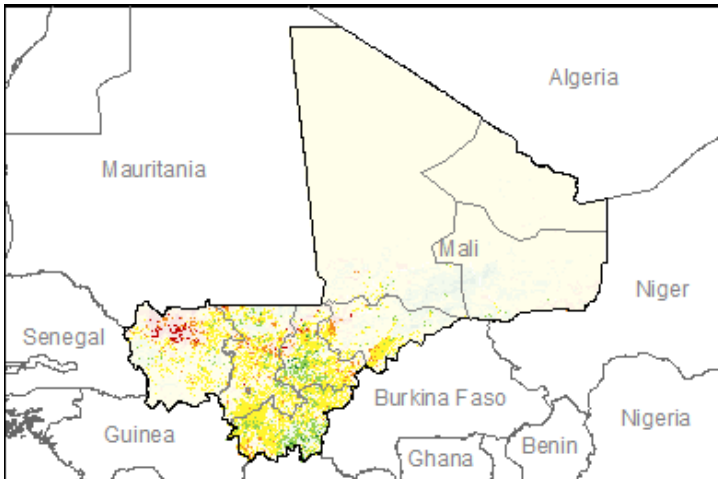
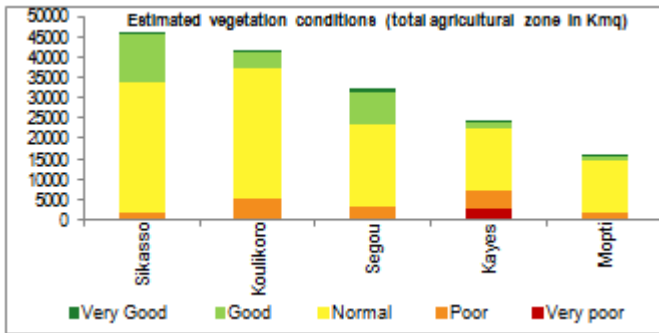
					FAO Hunger Map
Very high (>= 35%)	High (25-34%)	Moderately high (15-24%)	Moderately low (5-14%)	Very low (< 5% under.)	

FAO Hunger Map classifies all countries of the world into five based on % of population undernourished.

					IFPRI/2011 GHI
Extremely alarming	Alarming	Serious	Moderate	Low	

Vegetation Condition

At the middle of the rainy season, normal conditions are observed for the major part of the country except for the North of the Kayes province where the vegetation development is affected due to a persistent rainfall deficit in June and July. The general indicator of vegetation condition provided below is the absolute difference between the NDVI for August 2011 and the average of the last 10 years, calculated on the agricultural zones derived from CUI and LULC datasets (USGS, 1988 & 2000).



Source: JRC MARS – FoodSec

Crop phase in the reference period

Sowing	Maize - Millet - Rainfed rice - Sorghum
Growing	Maize - Millet - Rainfed rice - Sorghum
Harvesting	No crops are harvested in the reference period

Natural Disasters, Drought and Conflicts

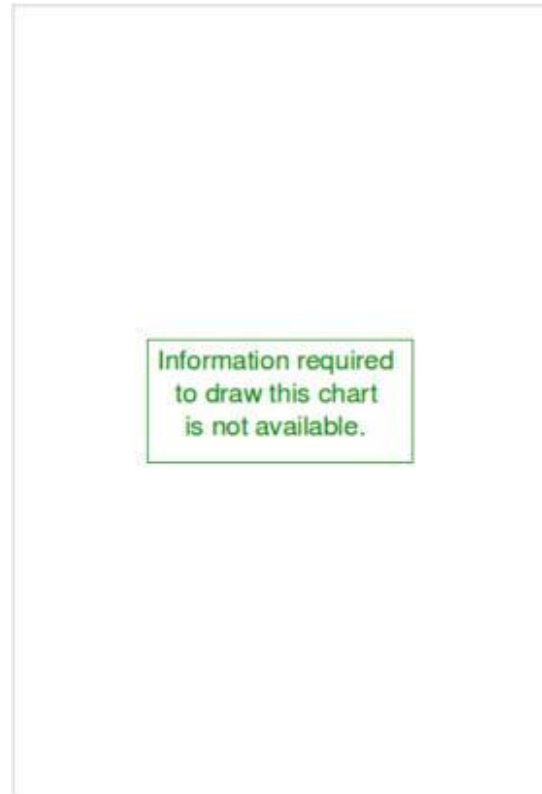
The influx of Malian returnees from Libya is putting strain to poor households, but this has not significantly affected food security conditions since returnees are not concentrated in any one area of the country. However the return of armed Malian Tamasheqs who had been fighting alongside Gadhafi is creating serious civil security threats in northern Mali.

Refugees and IDPs	2008	2009	n.a.
Total in the country	11494	15244	n.a.
Total outside the country	2508	3692	n.a.

Source: UNHCR Statistical Online Population Database, United Nations High Commissioner for Refugees (UNHCR), Data extracted on 01/12/2010.

Food Balance Sheet

The 2010/11 production was put at approximately 6.4 mln tonnes, 22% increase from the 2009/10 output and 57% increase from the five year average. Imports for 2010/11 marketing year (Nov/Oct) were at 207,000 tonnes, 8% below 2009/10. Prospects for the 2011 cereal crop remain uncertain due to late start of rains.



Source: GIEWS Country Briefs

Government Policies

The government will continue the subsidized inputs distribution to farmers. The level of subsidies for fertilizers and improved seeds remain to 2010-11, but with an extension to millet/sorghum.

Consumer and market oriented measures	n.a.
Producer oriented measures	Input support
Trade policy measures	n.a.
Safety net (increased or introduced)	n.a.

Different sources

Current events to watch (Click to see the full report)

[Mediterranean Review - 18 October 2011](#)
[Sahel and West Africa Food Security Outlook Update - S...](#)
[Sahel et Afrique de l'Ouest : Mise à jour de la Perspe...](#)
[Reference Map \(as of 12 Oct 2011\)](#)
[Ex-Gaddafi Tuareg fighters boost Mali rebels](#)

For more information, contact: Information-for-action@fao.org
 Website: www.foodsec.org

Powered By the **GIEWS Workstation**