

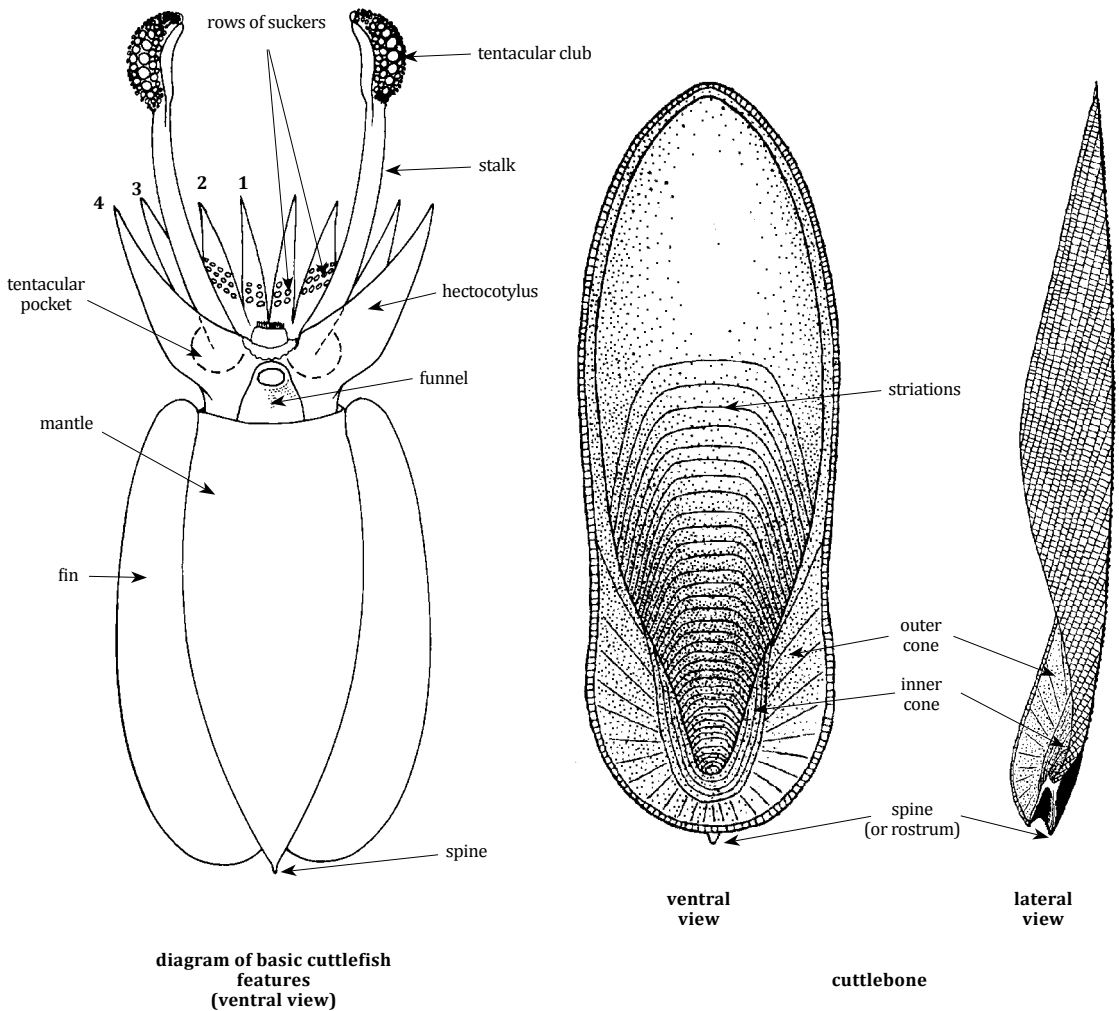
# CEPHALOPODS

All species of octopus, squid and cuttlefish are eaten locally and are of commercial importance, also used as bait for various fish species & lobsters. The " Guide to Orders" and "Guide to Species" include three orders and 17 species, respectively.

## TECHNICAL TERMS AND MEASUREMENTS AND GUIDE TO ORDERS

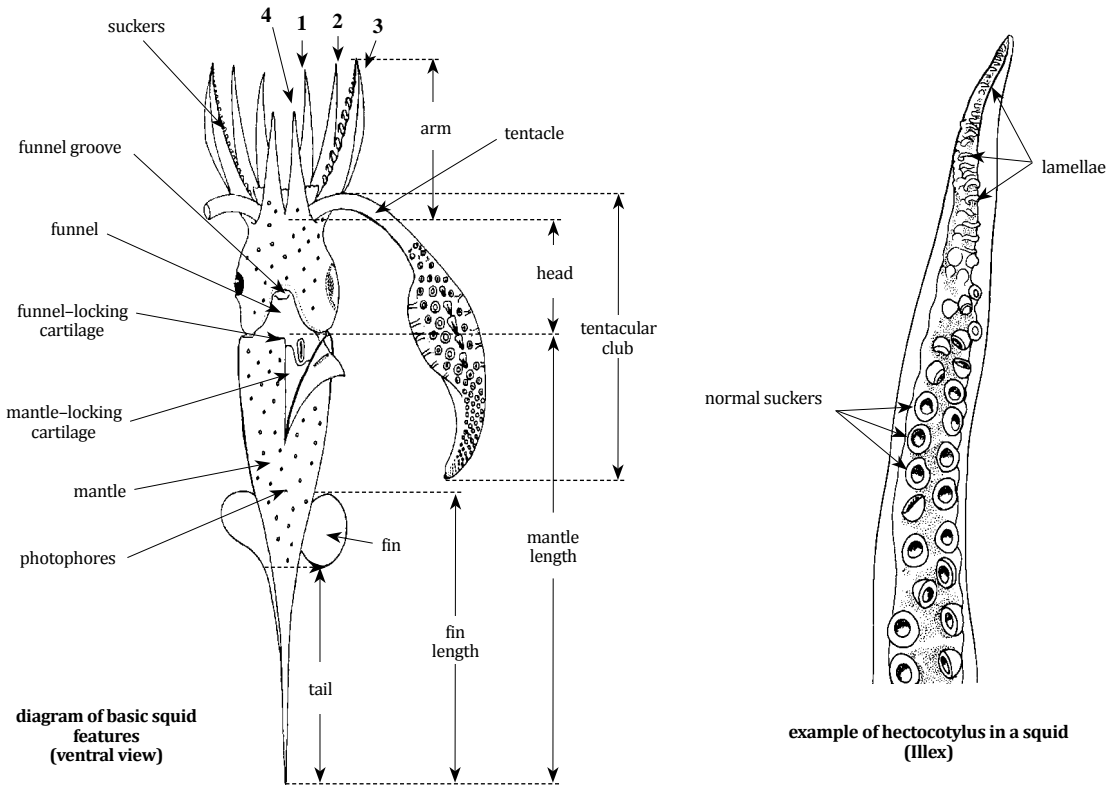
### Order SEPIOIDEA - Cuttlefishes

Seption (internal shell) large, chalky, rigid; 8 arms and 2 retractile tentacles.



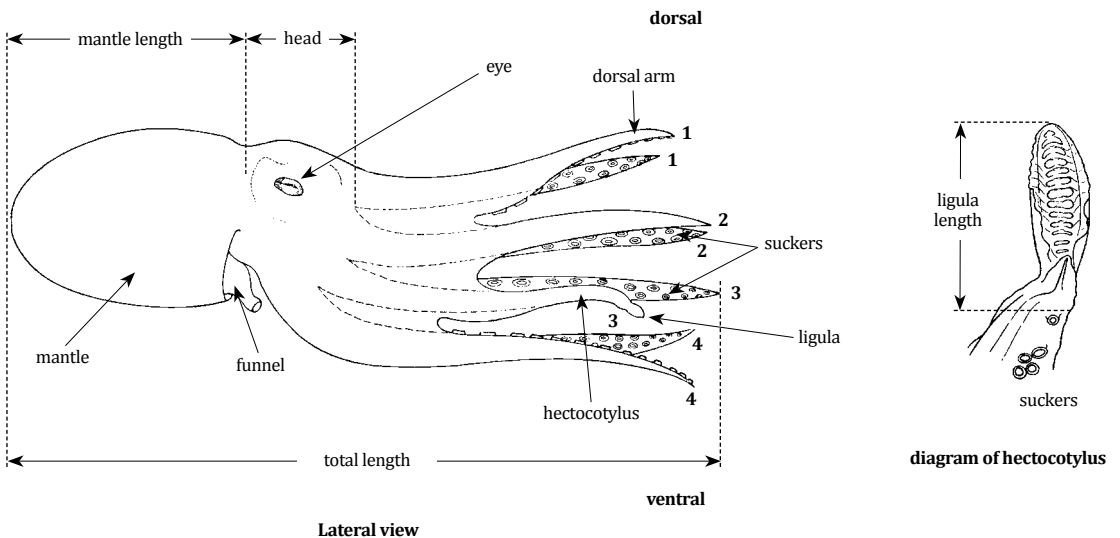
**Order TEUTHOIDEA - Squids**

Gladius (internal shell) chitinous, flexible, pen-shaped; 8 arms and 2 non-retractile tentacles.



**Order OCTOPODA - Octopuses and Argonauts**

Internal shell reduced or absent; 8 arms, no tentacles.



**SEPIIDAE**

Cuttlefishes

***Sepia latimanus*** Quoy & Gaimard, 1832

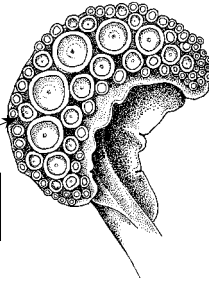
**Local name(s):** N: Dome; S: Dome (M/K).

**Habitat:** Coral reefs down to 30 m.

**Fisheries:** Set nets, Hand lines, Spears.

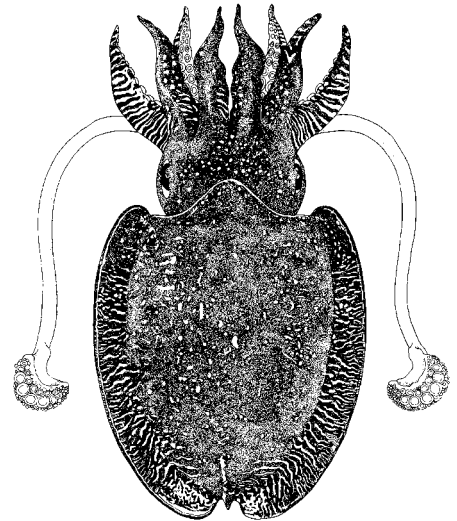
**Distinctive Characters:** Tentacular clubs half-moon shaped, their protective membranes fused at base, completely surrounding sucker-bearing surface; a deep cleft or groove between swimming keel and dorsal protective membrane nearly separates sucker-bearing area from stalk.

**Colour:** Light brown, yellowish or dark brown, with whitish mottle, blotches or spots; arms have longitudinal white bands on their margins that appear as broad white blotches when the arms are extended.



Tentacular club with 5 or 6 suckers in transverse rows, a few median ones enlarged

Tentacular club



Dorsal view

**Size:** To 50 cm (ML)

***Sepia pharaonis*** Ehrenberg, 1831 \*

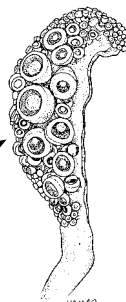
**Local name(s):** N: Dome; S: Dome (M/K).

**Habitat:** Neritic, demersal, from the coastline to 110 m; during the reproductive season, when the species migrates shoreward, more abundant in depths around 40 m.

**Fisheries:** Bottom trawls, Trolling gears.

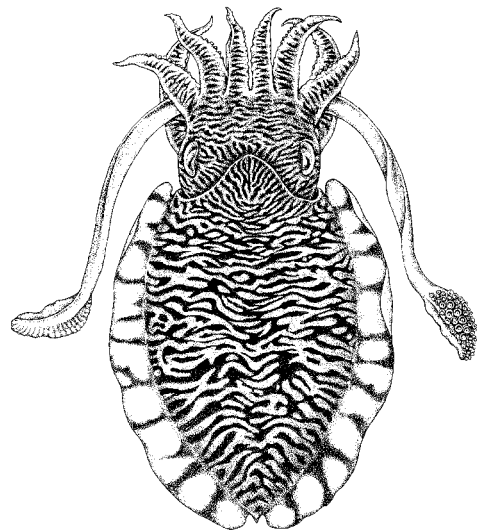
**Distinctive Characters:** Mantle broad; hectocotylus present on left ventral arm with 10 to 12 rows of normal size suckers proximally, 6 rows of reduced suckers medially; suckers of hectocotylus in 2 dorsal series are much smaller than those in 2 ventral series.

**Colour:** Pale brownish or reddish purple; head and arms with transverse zebra-stripe pattern; dorsal mantle has white blotches or spots and has a transverse zebra-stripe pattern.



8 suckers in transverse rows with 5 or 6 median ones (3<sup>rd</sup> and 4<sup>th</sup> in the series) quite enlarged

Tentacular club



Dorsal view

**Size:** To 43 cm (males), 33 cm (females)(ML)

**FAO names:** Pharaoh cuttlefish (En)

Seiche pharaon (Fr)

***Sepia prashadi*** Winkworth, 1936

**FAO names:** Hooded cuttlefish (En)  
Seiche capuchon (Fr)

**Local name(s):** N: Dome; S: Dome (M/K).

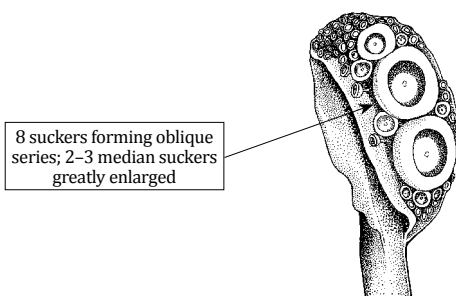
**Habitat:** Neritic, demersal, from the shoreline to about 40 m.

**Fisheries:** Bottom trawls.

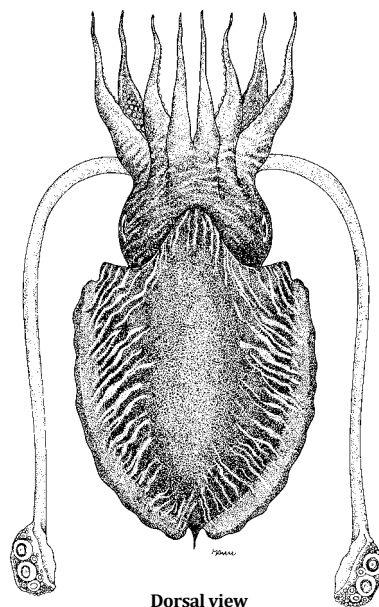
**Distinctive Characters:** Fins slightly shorter than mantle, its anterior margin reaching level of anterior margin of eye; hectocotylus present on left ventral arm with 4 rows of normal size suckers proximally, 12 to 14 rows of reduced suckers medially.

**Colour:** Dorsal mantle has transverse zebra-stripe pattern in breeding males.

**Remarks:** Of major interest to fisheries, important by-catch in prawn trawling.



Tentacular club



Dorsal view

**Size:** To 14 cm (ML)

***Sepia trygonina*** (Rochebrune, 1884) \*

**FAO names:** Trident cuttlefish (En)  
Seiche trident (Fr)

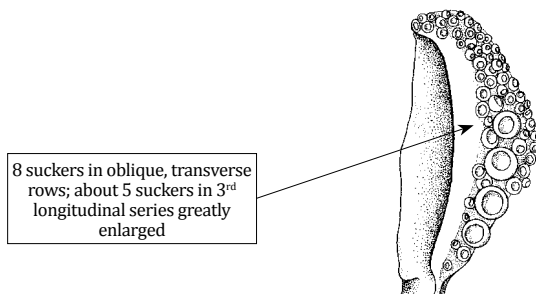
**Local name(s):** N: Dome; S: Dome (M/K).

**Habitat:** Demersal occurring from 35 m to 415 m.

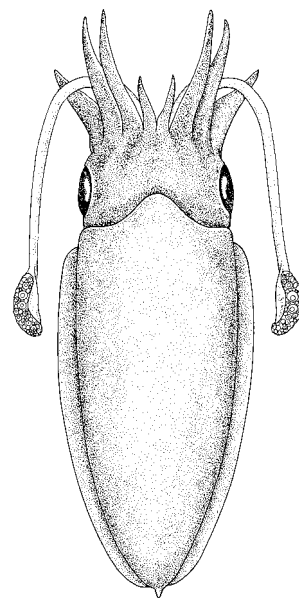
**Fisheries:** Bottom trawls.

**Distinctive Characters:** Mantle elongate, narrow, bluntly tapered posteriorly; fins narrow; tentacular clubs short, with a well developed swimming keel extending proximally beyond the base of the club.

**Colour:** Purplish brown; base of fins in males with a dark purple band; adjacent to band (or partially on it) is a series of small oval or circular cream-coloured patches, often raised as low tubercles.



Tentacular club



Dorsal view

**Size:** To 14 cm (ML)

***Sepia zanzibarica* Pfeffer, 1884** \*

**FAO names:** Zanzibar cuttlefish (En)

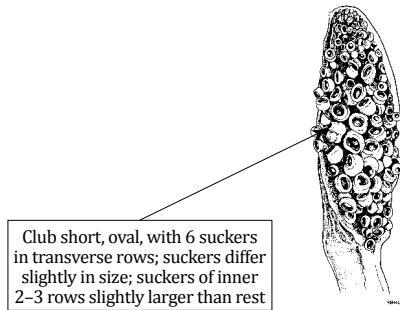
**Local name(s):** N: Dome; S: Dome (M/K).

**Habitat:** Occurs between 20 and 125 m.

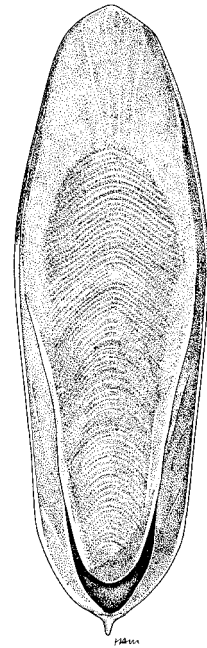
**Fisheries:** Bottom trawls.

**Distinctive Characters:** Hectocotylus present on left ventral arm with 6 rows of reduced suckers medially, then normal size suckers distally to arm tip; reduced suckers much smaller than normal arm suckers; cuttlebone outline oblong, bone bluntly rounded anteriorly and posteriorly, strongly recurved ventrally.

**Colour:** No information.



Tentacular club



Cuttlebone

**Size:** To 25 cm (ML)

**LOLIGINIDAE**

Inshore squids

***Sepioteuthis lessoniana* Férussac, 1831** \*

**FAO names:** Bigfin reef squid (En)

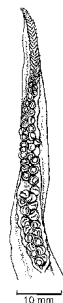
**Local name(s):** N: Dome; S: Dome (M/K).

**Habitat:** Neritic, occurring from the surface down a maximum depth of at least 100 m.

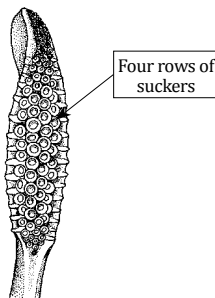
**Fisheries:** Seines, Lured hooks, Bottom trawls.

**Distinctive Characters:** Mantle long, robust, length of fin about 100% of mantle length; tentacular clubs long, expanded.

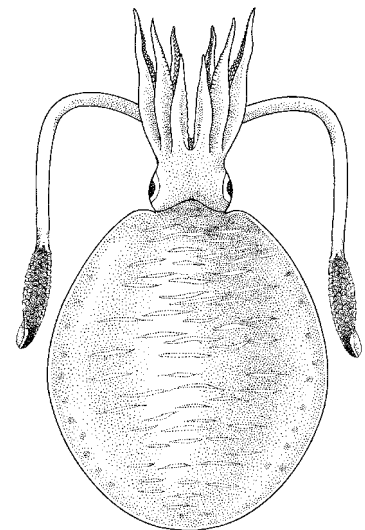
**Colour:** Brown on the back, with white spots and stripes, variously shaped; young specimens are usually more iridescent.



Left arm IV of male hectocotylized



Tentacular club



Dorsal view

**Size:** To 42 cm (males), 38 cm (females)(ML)

***Uroteuthis duvaucelii*** (d'Orbigny, 1835)

**Local name(s):** N: Ngisi; S: Ngisi mwanzi (M/K).

**Habitat:** A neritic shallow water species occurring from 30 m to 170 m; forms large aggregations during the spawning season.

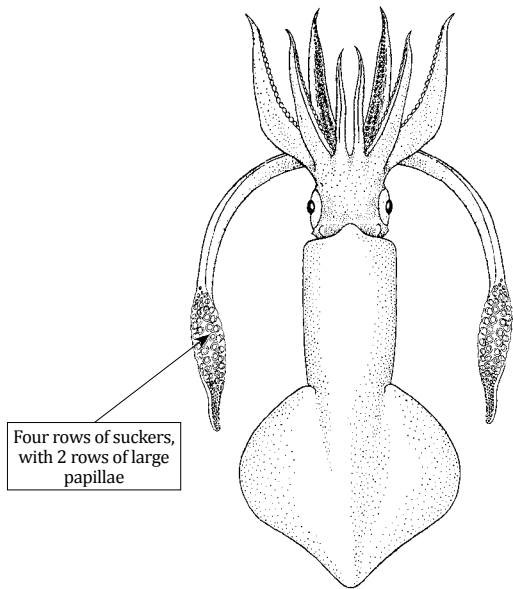
**Fisheries:** Bottom trawls, Seines.

**Distinctive Characters:** Mantle relatively short and stout; fins rhombic their length slightly over 50% of mantle length; tentacular clubs expanded, large, up to 45–50% of mantle length.

**Colour:** No information.

**FAO names:** Indian squid (En)

Calmar indien (Fr)



Four rows of suckers, with 2 rows of large papillae

Dorsal view

**Size:** To 30 cm (ML)

## ONYCHOTEUTHIDAE

***Onychoteuthis banksii*** (Leach, 1817)

**Local name(s):** N: Ngisi; S: Ngisi (M/K).

**Habitat:** An oceanic species occurring from the surface to about 150 m; it may also be found as deep as 800 m.

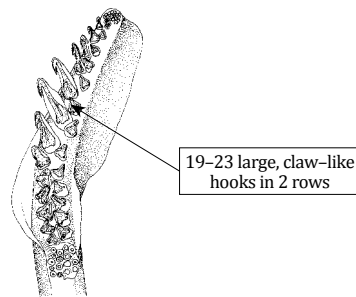
**Fisheries:** Deep nets.

**Remarks:** Not exploited at present.

**Distinctive Characters:** Mantle robust; no marginal rows of suckers; gladius visible as a dark line through the skin along middle line of mantle.

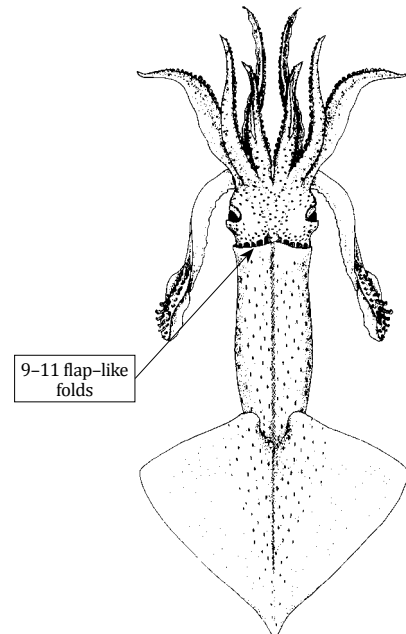
**Colour:** No information.

**FAO names:** Common clubhook squid (En)



19–23 large, claw-like hooks in 2 rows

Tentacular club



9–11 flap-like folds

Dorsal view

**Size:** To 30 cm (ML)

## OMMASTREPHIDAE

### *Sthenoteuthis oualaniensis* (Lesson, 1830)

**Local name(s):** N: Ngisi; S: Ngisi (M/K).

**Habitat:** Oceanic occurring from the surface to probably a maximum depth of 1000 m.

**Fisheries:** Not exploited at the moment

**Distinctive Characters:** Mantle muscular, conical posteriorly; 2 rows of suckers on tentacular club; a large, oval photophoric patch on antero-dorsal surface of mantle.

**Colour:** No information.

**FAO names:** Purpleback flying squid (En)

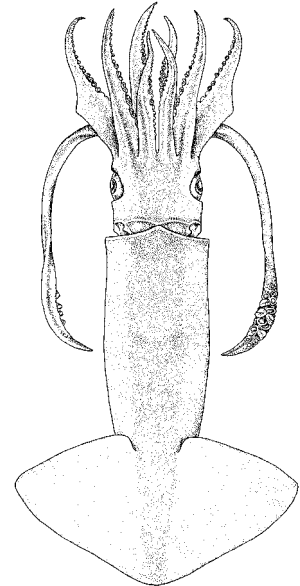
Encornet bande violette (Fr)



Tentacular club



Left arm IV of male  
hectocotylized



Dorsal view

**Size:** To 35 cm (ML)

## THYSANOTEUTHIDAE

### *Thysanoteuthis rhombus* Troschel, 1857

**Local name(s):** N: Ngisi; S: Ngisi (M/K).

**Habitat:** An epipelagic, oceanic species.

**Fisheries:** Not exploited at the moment.

**Distinctive Characters:** Mantle thick, muscular, tapering to a blunt tip posteriorly; fins long, broad, rhombic occupying the entire length of mantle; arms with 2 rows of suckers; buccal connectives attached to ventral borders of arms IV.

**Colour:** No information.

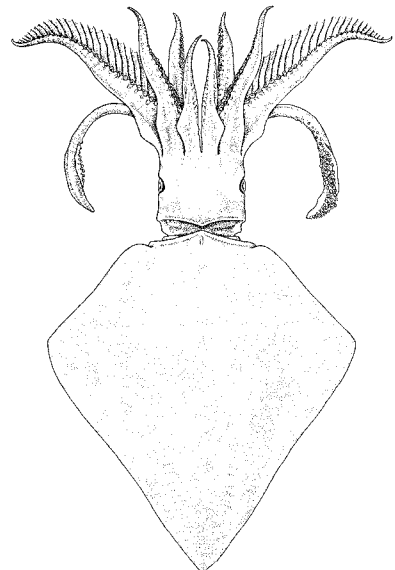
**FAO names:** Diamondback squid (En)

Chipiloua commun (Fr)



Tentacular club

4 rows of  
suckers



Dorsal view

**Size:** To 100 cm (ML)

**OCTOPODIDAE**

## Octopuses

***Callistoctopus macropus*** (Risso, 1826)

**Local name(s):** N: Pweza; S: Pweza (M/K).

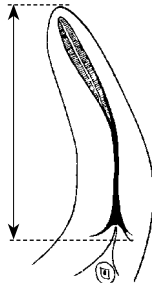
**Habitat:** A benthic shallow-water species occurring in coral reefs, reef flats and on open bottoms.

**Fisheries:** Spears, Hooks and Line, Lured hooks, Traps, Bottom trawls.

**Distinctive Characters:** Arms I longest and stout.

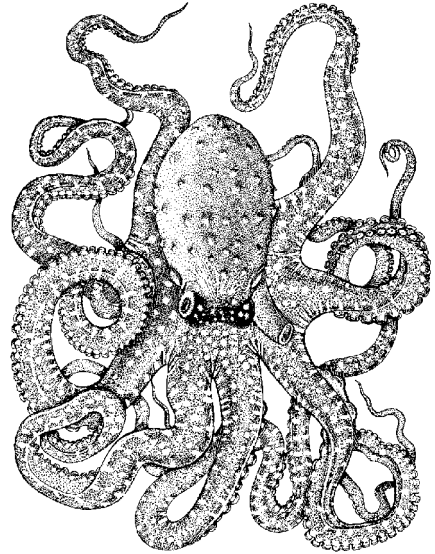
**Colour:** White spots on reddish background.

Ligula tubular up to 14% of arm length



Tip of hectocotylized right arm III of male

**FAO names:** Whitespotted octopus (En)  
Poulpe tacheté (Fr)



Dorsal view

**Size:** To 150 cm (TL)

***Octopus aegina*** Gray, 1849

**Local name(s):** N: Pweza; S: Pweza (M/K).

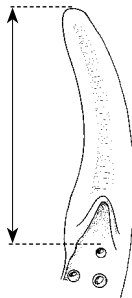
**Habitat:** A benthic species, common on the continental shelf from 30 m to about 120 m.

**Fisheries:** Traps, Hooks and Line, Spears.

**Distinctive Characters:** Dorsal arms shorter than ventral arms; ligula short, with a very shallow groove, 5–8% of arm length; single cirrus over eye.

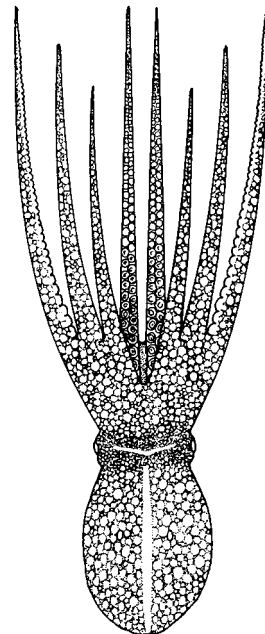
**Colour:** No information.

Ligula short, with very shallow groove, 5–8% of arm length



Tip of hectocotylized right arm III of male

**FAO names:** Sandbird octopus (En)  
Poulpe de sables (Fr)



Dorsal view

**Size:** To 10 cm (ML), 30 cm (TL)



***Octopus cyanea* Gray, 1849**

**FAO names:** Big blue octopus (En)

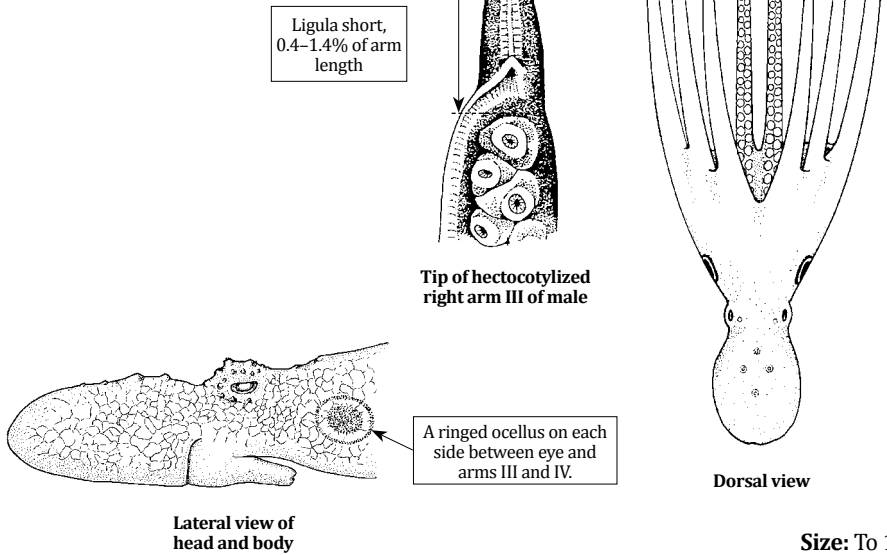
**Local name(s):** N: Pweza; S: Pweza (M/K).

**Habitat:** A benthic species occurring in shallow waters on coral reefs.

**Fisheries:** Traps and Spears (at night using light attraction devices).

**Distinctive Characters:** Arms subequal in length; 1 large cirrus and 2 smaller tubercles over eye.

**Colour:** Mantle mottled, reticulate, arms with purple-brown blotches.



**Size:** To 16 cm (ML)

***Octopus vulgaris* Cuvier 1797**

**FAO names:** Common octopus (En)  
Pieuve (Fr)

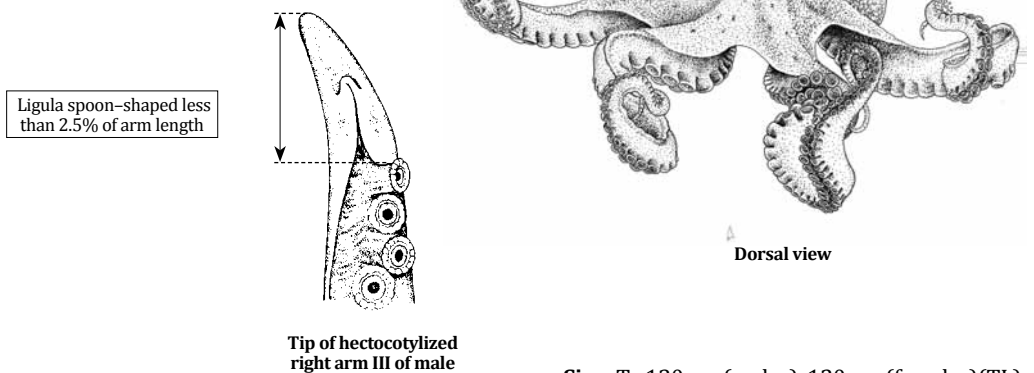
**Local name(s):** N: Pweza; S: Pweza (M/K).

**Habitat:** From the coastline to the outer edge of the continental shelf down to 200 m; over rocks on coral reefs and sea grass beds.

**Fisheries:** Spears, Hooks and line, Bottom trawls.

**Distinctive Characters:** Arms stout, about equal in length and thickness; two rows of suckers on arms.

**Colour:** Grey, yellow, brown and green; changes colour to hide from predators.



**Size:** To 130 cm (males), 120 cm (females)(TL)

**ARGONAUTIDAE**

## Argonauts

***Argonauta argo*** Linnaeus, 1758**FAO names:** Greater argonaut (En)  
Argonaute papier (Fr)**Local name(s):** N: Pweza; S: Pweza (M/K).**Habitat:** An epipelagic, oceanic species occurring in near surface waters.**Fisheries:** Bottom trawls.**Distinctive Characters:** Males minute; females shell white, covered by the membrane of 1<sup>st</sup> pair of arms; head small, eyes prominent; 1<sup>st</sup> and 2<sup>nd</sup> arms subequal.**Colour:** Body of females purple-blue to wine-red from above, light from below; extended 1<sup>st</sup> arm flap purple-red; shell, porcelain-white, early section and nodules on the keel dark brown; males with many small chromatophores.**Size:** To 30 cm (female), 1.5–2 cm (dwarf male)(TL)