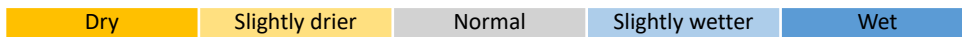


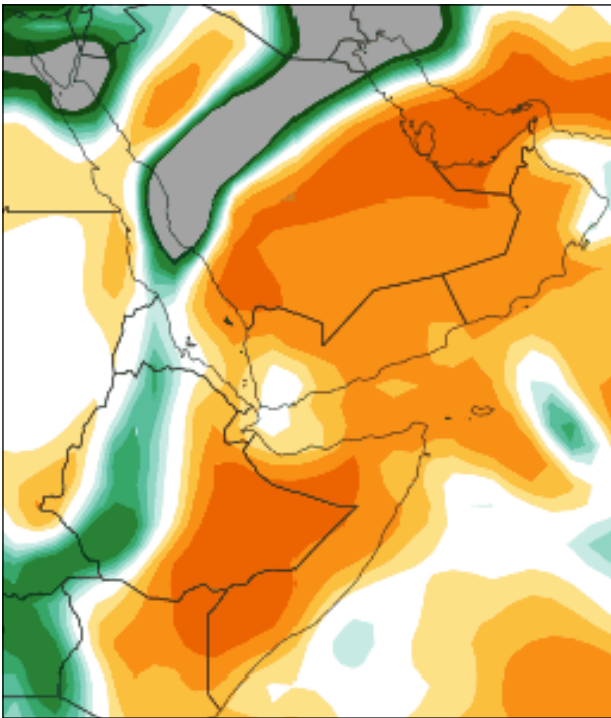
**Seasonal precipitation predictions in the Desert Locust winter/spring/summer breeding areas  
(March – August 2024)**

According to the latest models, dry conditions are expected to persist along the Red Sea coast and in the interior throughout winter and spring. The forecast for March models has changed, predicting above-normal rains from the Gulf of Aden and eastern Ethiopia plateau to southeast Iran and southwest Pakistan. The presence of warmer waters and a positive phase of the Indian Ocean Dipole (IOD) in May and June could lead to more cyclone activity in the western Indian Ocean, potentially resembling the cyclones Sagar and Mekunu in 2018 and the seasonal precipitation prediction in March 2020.

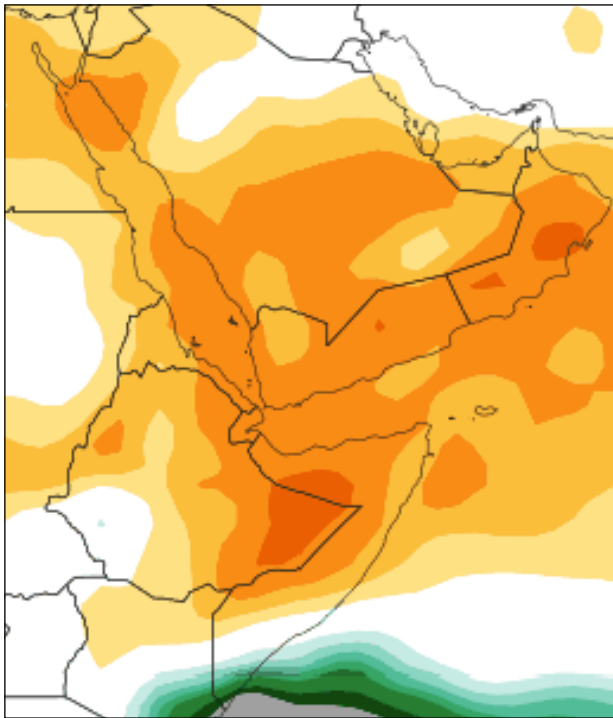
PRECIPITATION ANOMALY	Mar	Apr	May	Jun	Jul	Aug
Algeria (central/south)	Yellow	Yellow	Yellow	Yellow	Yellow	Blue
Chad	Grey	Grey	Grey	Yellow	Blue	Blue
Djibouti	Grey	Grey	Grey	Grey	Grey	Blue
Egypt (SE Red Sea–winter, Nile–summer)	Yellow	Yellow	Yellow	Yellow	Yellow	Blue
Eritrea (western–summer, coastal–winter)	Yellow	Yellow	Yellow	Blue	Blue	Blue
Ethiopia (Somali–spring, Afar–summer)	Blue	Yellow	Yellow	Blue	Blue	Blue
India (Rajasthan, Gujarat)	Grey	Grey	Grey	Blue	Blue	Blue
Iran (south–spring)	Blue	Yellow	Grey	Blue	Blue	Blue
Mali (northeast)	Grey	Grey	Grey	Yellow	Yellow	Blue
Mauritania (south–summer, NW–autumn)	Grey	Grey	Grey	Yellow	Yellow	Blue
Morocco (W Sahara–autumn, Atlas–spring)	Grey	Grey	Blue	Grey	Grey	Blue
Niger (Tamesna, Air)	Grey	Grey	Grey	Grey	Grey	Blue
Oman (spring)	Blue	Yellow	Blue	Blue	Blue	Blue
Pakistan (southwest–spring, east–summer)	Blue	Yellow	Yellow	Blue	Blue	Blue
Saudi Arabia (Red Sea, interior–spring)	Yellow	Yellow	Yellow	Blue	Blue	Blue
Somalia (N coast–winter, N interior–spring)	Blue	Yellow	Yellow	Blue	Blue	Blue
Sudan (interior–summer, coastal–winter)	Yellow	Yellow	Yellow	Blue	Blue	Blue
Yemen (interior–summer, coastal–winter)	Blue	Yellow	Yellow	Blue	Blue	Blue



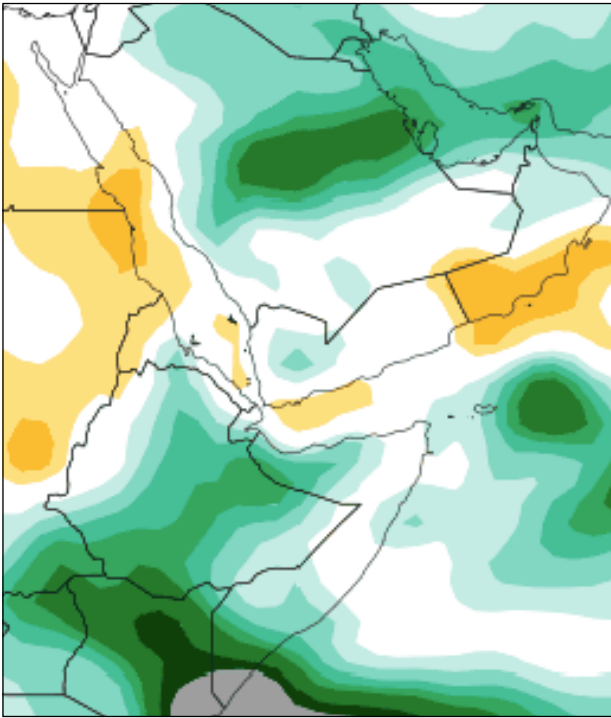
Subseasonal forecast multi-model precipitation – WCS maps (four weeks)



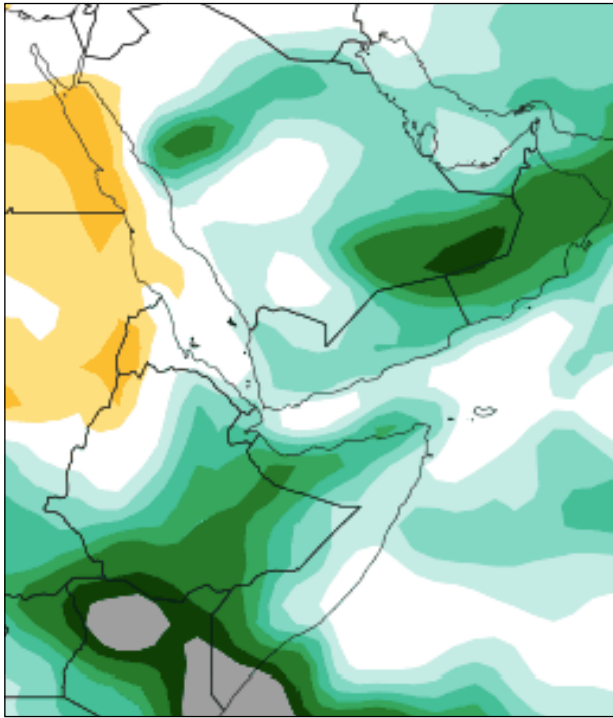
15–21 February 2024



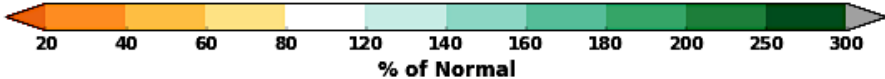
22–28 February 2024



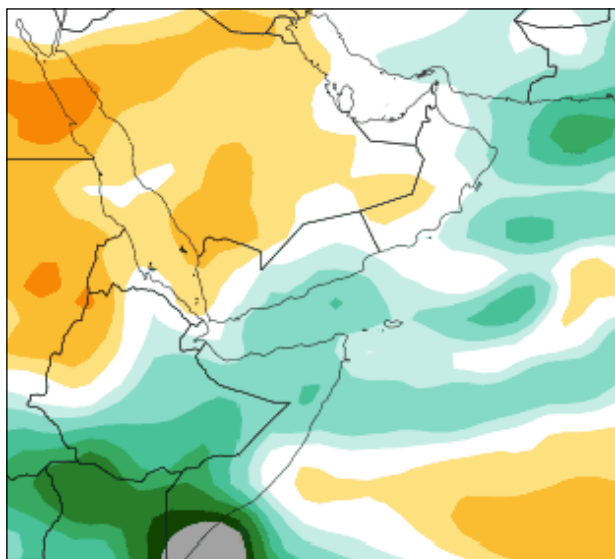
29 February – 6 March 2024



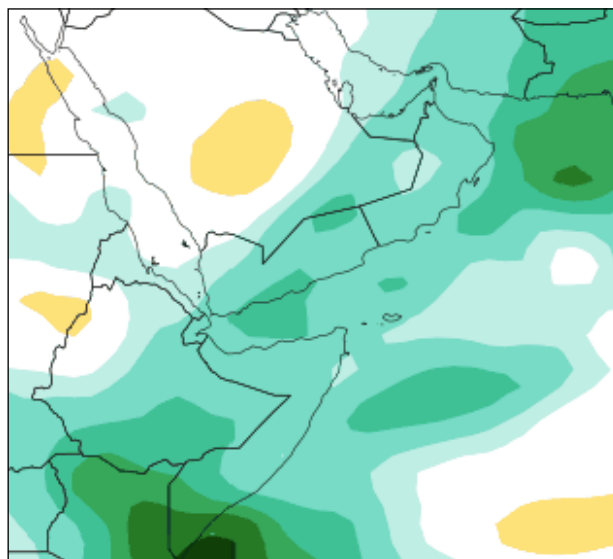
7–13 March 2024



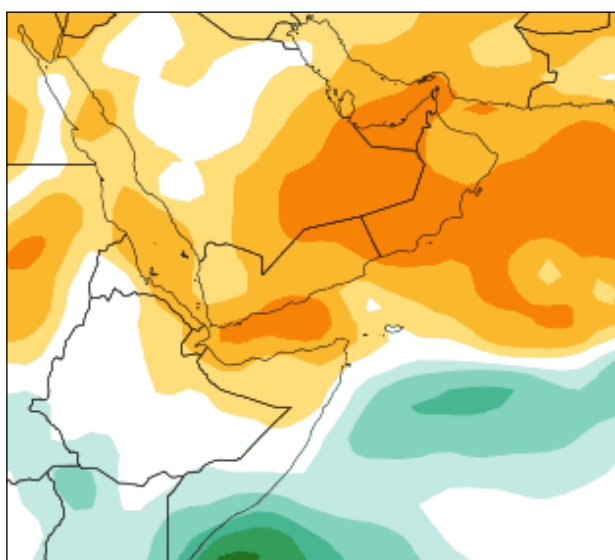
### Seasonal forecast multi-model precipitation – WCS vs. Copernicus maps (three months)



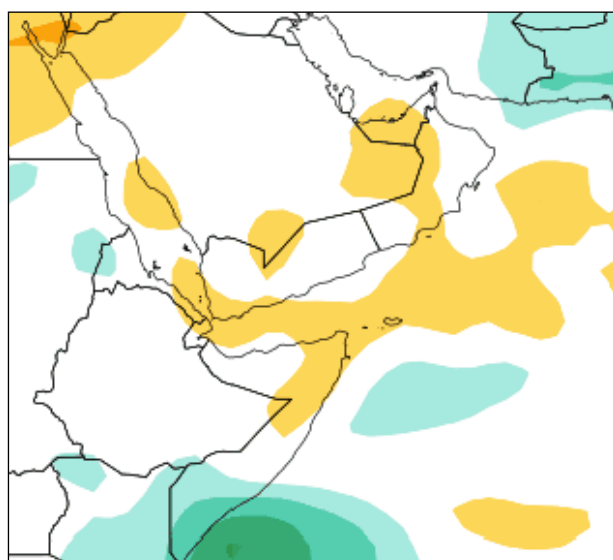
March 2024 WCS



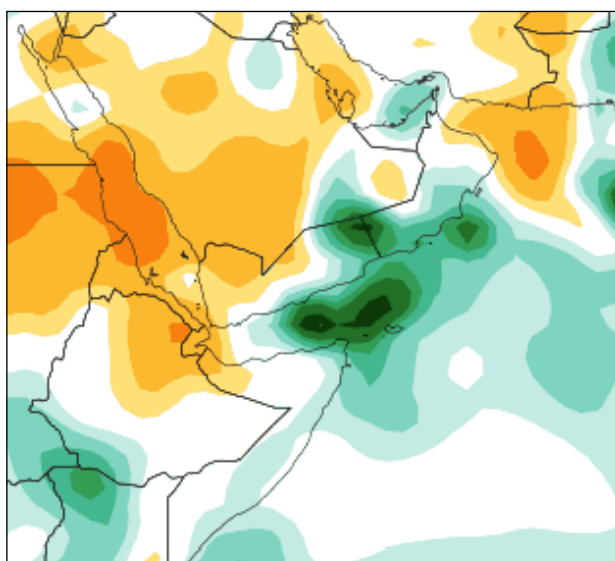
March 2024 Copernicus



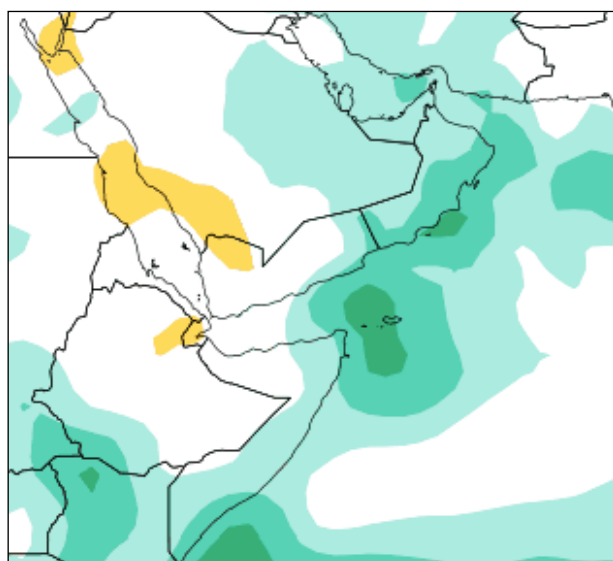
April 2024 WCS



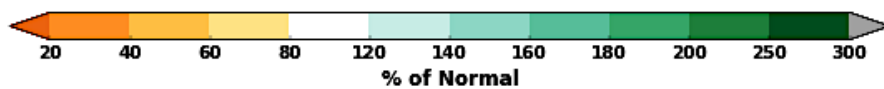
April 2024 Copernicus



May 2024 WCS

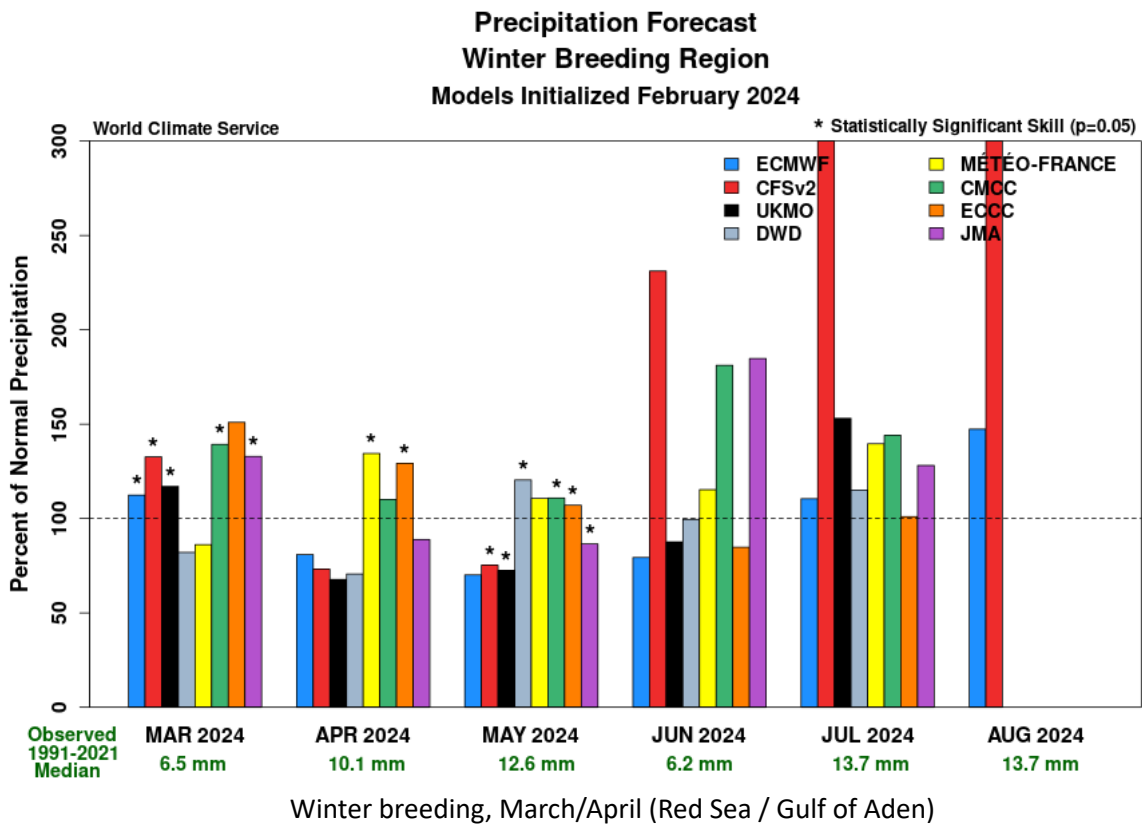


May 2024 Copernicus

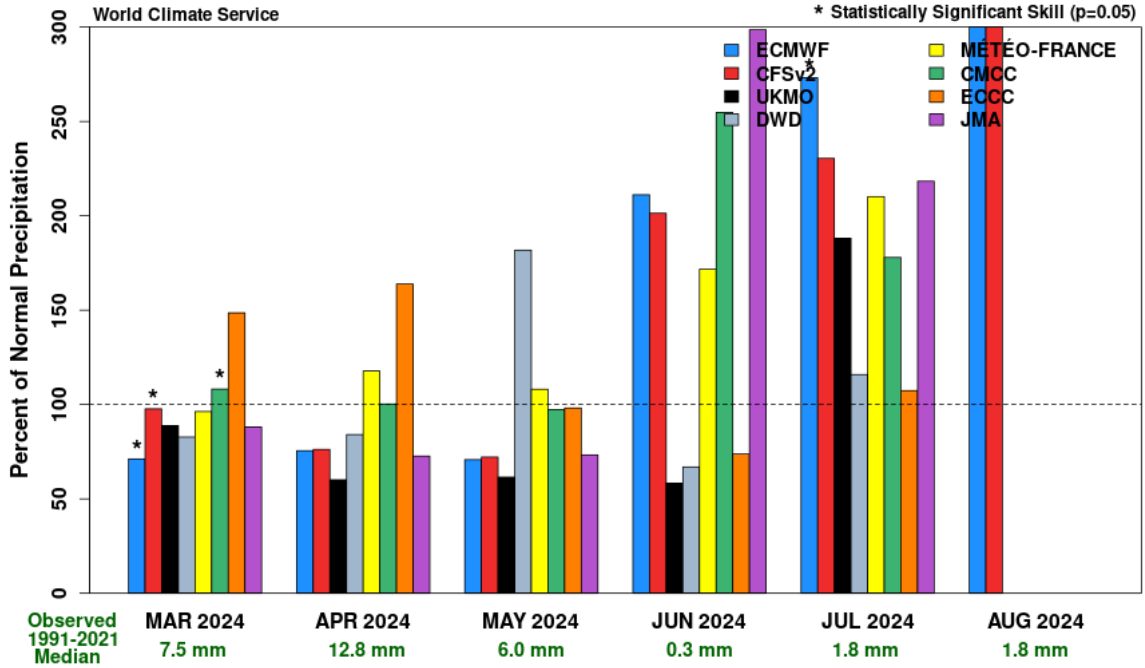


**Model forecast charts.** The latest seasonal precipitation predictions provided by the World Climate Service (WCS) cover the spring, summer and winter breeding areas of the Desert Locust. This is one of the most sophisticated products available, derived from **eight** models: CFSv2, ECMWF, and Copernicus (CMCC, DWD, ECCC, JMA, Météo-France, UKMO). The results of each model are presented below.

**How to interpret the precipitation forecast charts.** A value of 100 on the left axis indicates normal rainfall; values less than 100 indicate drier than normal conditions; more than 100 indicates wetter than normal. Little variation between models suggests greater confidence and reliability. An asterisk indicates the most reliable model in each month. When available, the historically best model during the entire forecast period in the region is indicated in the caption.

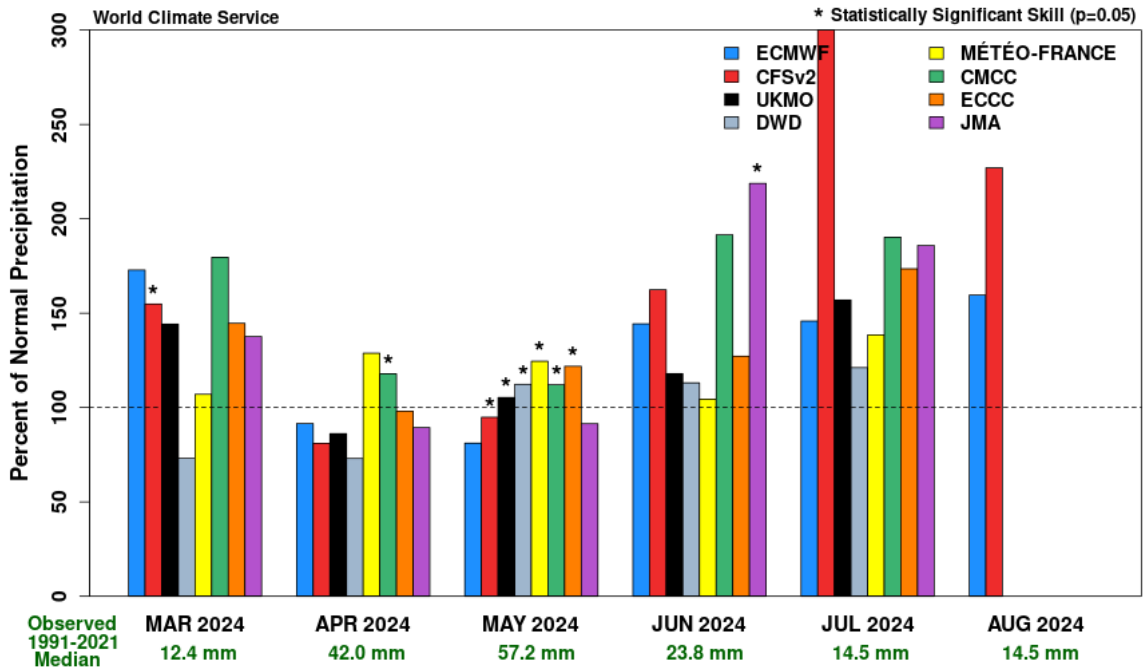


**Precipitation Forecast**  
**Spring Breeding Region (Central)**  
 Models Initialized February 2024



Spring breeding, March–May/June (Arabian Peninsula)

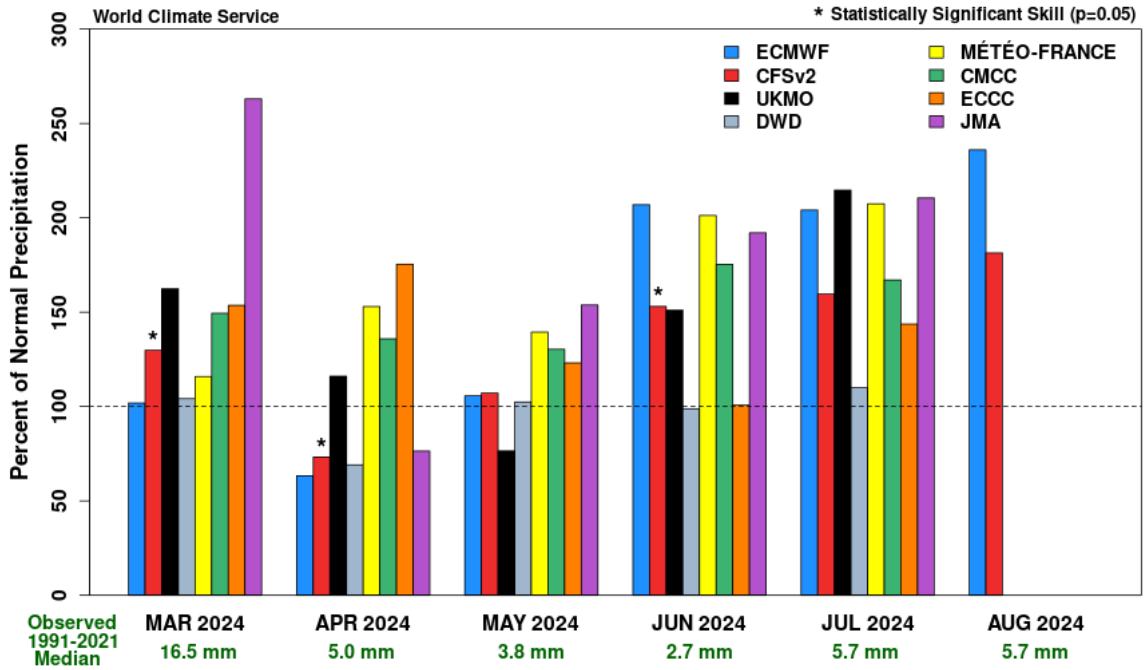
**Precipitation Forecast**  
**Spring Breeding Region (Northeast Africa)**  
 Models Initialized February 2024



Spring breeding, March–May/June (Horn of Africa)

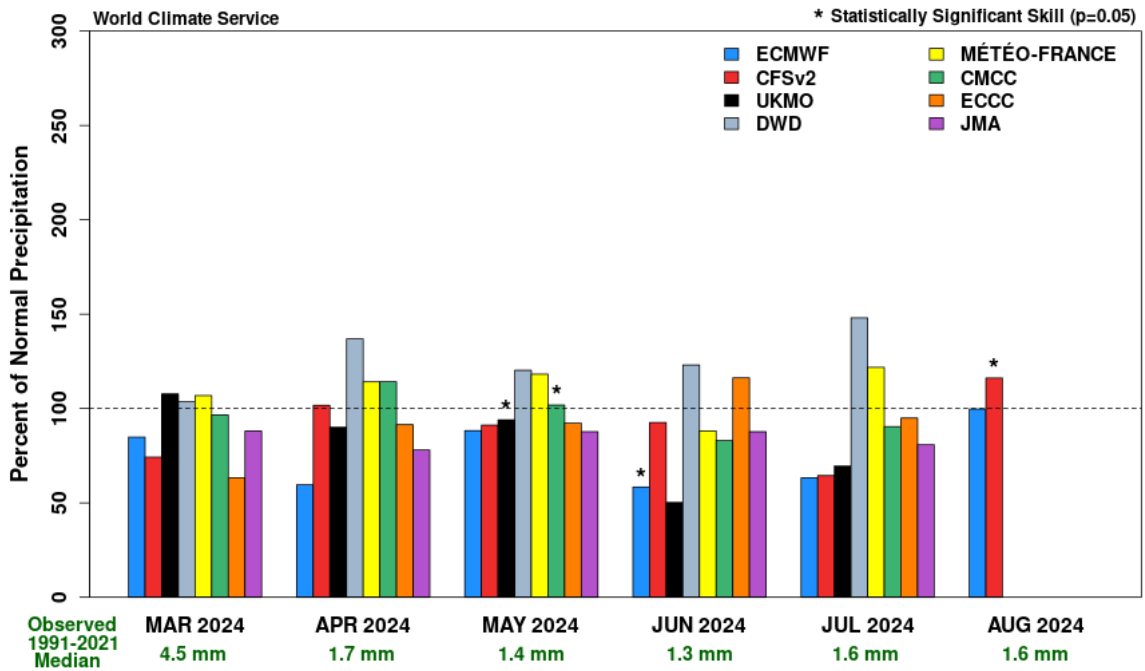


**Precipitation Forecast  
Spring Breeding Region (Eastern)  
Models Initialized February 2024**



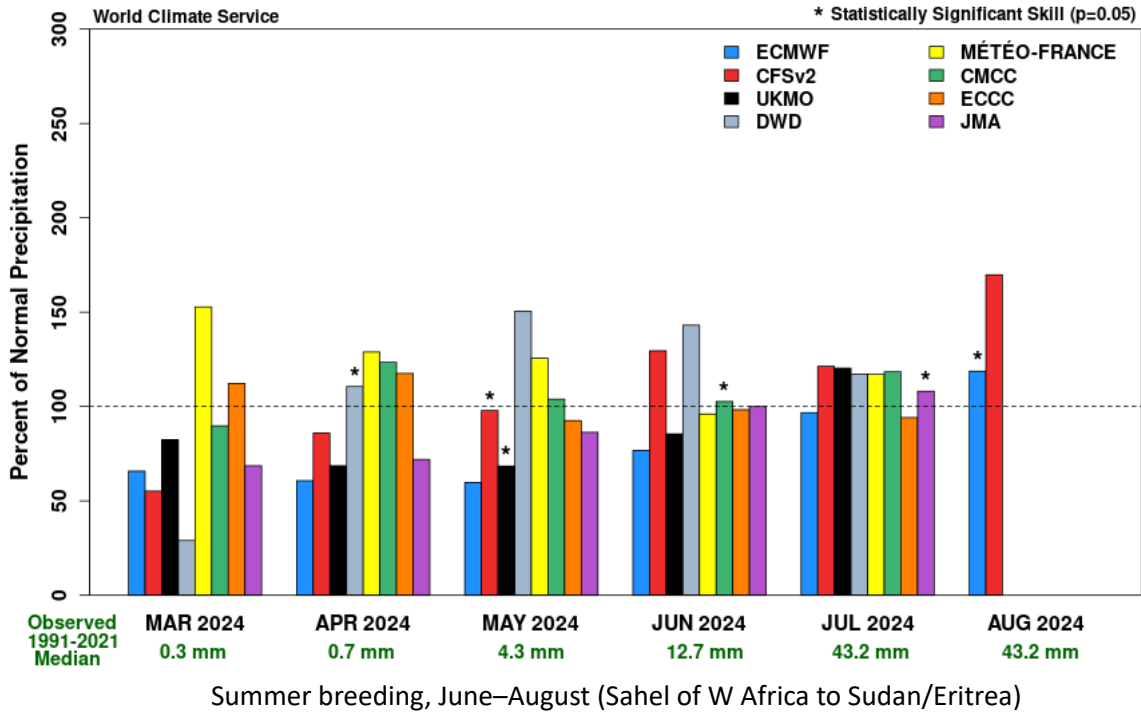
Spring breeding, March–May (SE Iran / SW Pakistan)

**Precipitation Forecast  
Spring Breeding Region (Western)  
Models Initialized February 2024**



Spring breeding, March–May (NW Africa)

**Precipitation Forecast  
Summer Breeding Region (Western)  
Models Initialized February 2024**



**Precipitation Forecast  
Summer Breeding Region (Eastern)  
Models Initialized February 2024**

