

**SELECTED INDICATORS OF
FOOD AND AGRICULTURE DEVELOPMENT
IN
ASIA-PACIFIC REGION
1993-2003**



RAP PUBLICATION 2004/ 20

SELECTED INDICATORS OF FOOD AND AGRICULTURE DEVELOPMENT IN ASIA-PACIFIC REGION 1993-2003



FOOD AND AGRICULTURE ORGANIZATION OF THE UNITED NATIONS
REGIONAL OFFICE FOR ASIA AND THE PACIFIC, BANGKOK
OCTOBER 2004

The designations employed and the presentation of material in this publication do not imply the expression of any opinion whatsoever on the part of the Food and Agriculture Organization of the United Nations concerning the legal status of any country, territory, city or area of its authorities, or concerning the delimitation of its territories or boundaries.

All rights reserved. Reproduction and dissemination of material in this information product for educational or other non-commercial purposes are authorized without any prior written permission from the copyright holders provided the source is fully acknowledged. Reproduction of material in this information product for sale or other commercial purposes is prohibited without written permission of the copyright holders. Applications for such permission should be addressed to Dr. Frederick Baker, Senior Statistician, FAO Regional Office for Asia and the Pacific, Maliwan Mansion, 39 Phra Atit Road, Bangkok 10200, Thailand or by e-mail to Frederick.baker@fao.org.

© FAO, 2004

Map of Asia and the Pacific is used courtesy of The General Libraries, The University of Texas at Austin. The pictures on the cover were taken by P. Johnson. Tables were prepared by the FAO Regional Office for Asia and the Pacific, on the basis of information available as of August 2004. Please note that growth rates take into consideration data that are not printed. Inquiries about the technical contents and comments about the profiles should be addressed to:

Senior Statistician
FAO Regional Office for Asia and the Pacific
Maliwan Mansion, 39 Phra Atit Road
Bangkok, 10200
Thailand
Tel : (662) 697-4000
Fax : (662) 697-4445

FAO food and agriculture statistics are available on the internet at:

<http://www.fao.org>

FOREWORD

This is the twenty first issue of the publication *Selected indicators of food and agriculture development in Asia-Pacific region*. It presents data on selected items for the years 1993-2003, except some tables that provide information for the period 1992-2002. Most tables show two types of information: annual figures for 1993, 2000, 2001, 2002 and 2003 and the annual growth rate for the period 1993-2003. The indicators are grouped under the following headings: Agricultural land and population, Agricultural inputs, Production indices, Staple food crops, Edible oil crops, Horticultural crops, Fibre crops, Other crops, Livestock, Agricultural trade, Fisheries, Forestry, Nutrition and Other indicators including a table reporting the status of organic farming in the region. A section on country profiles has been added; your comments about the content and scope of the profiles would be appreciated.

Countries of the region are shown under two groups: "Developing countries", including the "Transition market" countries, and "Developed countries". For comparison purposes, figures relating to "Rest of world" and "World" are also presented. Data for new member countries in the region have been included in this year's publication and a new format has been adopted. Please note that country data for Timor-Leste were reported as provincial data for Indonesia before 2000 and no country data were reported for the Federated States of Micronesia, the Marshall Islands and Palau before 1995.

For almost all commodity tables, data are retrieved from the FAO computerized data base, especially FAOSTAT, or from the FAO Yearbooks. These, in turn, are based on information supplied by member countries.

The growth rates shown in the present publication have been worked out using the exponential growth method to indicate the overall regional performance and also to highlight inter-country differences.

Various units of FAO including the Statistics Division and the Information Systems and Technology Division have cooperated with the FAO Regional Office for Asia and the Pacific in the preparation of this publication, providing computer programs and data bases for the production of tables. This collaboration is duly acknowledged.

He Changchui
Assistant Director-General and
FAO Regional Representative for Asia and the Pacific

Bangkok, October 2004

SYMBOLS USED IN THE TABLES

*	Unofficial figure
F	FAO estimate
T	Trend calculation
-	Data not available
MT	Metric ton
Ha	Hectare
Kg	Kilogram
kg/ha	Kilogram per hectare
CUM	Cubic meter

In most tables a blank space has the same meaning as the symbol (-) defined above.

For crop yields and all sub-regional totals no (F) or (*) symbol is used as these are derived data.

To divide decimals from whole numbers, a full stop (.) is used.

Please note that Asia-Pacific* refers to countries in the table.

CONTENTS

Table		Page
AGRICULTURAL LAND AND POPULATION		
1	Land use	3
2	Agricultural land	4
3	Agricultural population	5
4	Agricultural land and population	6
AGRICULTURAL INPUTS		
5	Irrigation	9
6	Irrigated land as proportion of agricultural land	10
7	Mineral fertilizers: consumption	11
8	Mineral fertilizers: consumption per ha of agricultural land	12
9	Agricultural tractors: number in use	13
PRODUCTION INDICES		
10	Agricultural production indices	17
11	Food production indices	18
STAPLE FOOD CROPS		
A. Cereal Crops		
12	Rice paddy: production	21
13	Rice paddy: yield	22
14	Rice paddy: area harvested	23
15	Wheat: production	24
16	Wheat: yield	25
17	Wheat: area harvested	26
18	Maize: production	27
19	Maize: yield	28
20	Maize: area harvested	29
21	Millet: production	30
22	Millet: yield	31
23	Millet: area harvested	32
24	Cereals: production	33
25	Cereals: yield	34
26	Cereals: area harvested	35
B. Roots and Tubers		
27	Cassava: production	39
28	Cassava: yield	40
29	Cassava: area harvested	41

30	Sweet potatoes: production	42
31	Sweet potatoes: yield	43
32	Sweet potatoes: area harvested	44
33	Potatoes: production	45
34	Potatoes: yield	46
35	Potatoes: area harvested	47
36	Taro: production	48
37	Taro: yield	49
38	Taro: area harvested	50
39	Roots and tubers: production	51
40	Roots and tubers: yield	52
41	Roots and tubers: area harvested	53

C. Pulses

42	Pulses: production	57
43	Pulses: yield	58
44	Pulses: area harvested	59

EDIBLE OIL CROPS

45	Groundnuts in shell: production	63
46	Groundnuts in shell: yield	64
47	Groundnuts in shell: area harvested	65
48	Soybean: production	66
49	Soybean: yield	67
50	Soybean: area harvested	68
51	Coconut: production	69
52	Palm oil: production	70
53	Oil crops (oil equivalent): production	71

HORTICULTURE CROPS

54	Fruits total (excluding melon): production	75
55	Bananas: production	76
56	Citrus fruit total: production	77
57	Mangoes: production	78
58	Vegetables total (incl. melons): production	79
59	Cabbages: production	80
60	Cabbages: yield	81
61	Cabbages: area harvested	82
62	Tomatoes: production	83
63	Tomatoes: yield	84
64	Tomatoes: area harvested	85
65	Onions (dry): production	86
66	Onions (dry): yield	87
67	Onions (dry): area harvested	88

FIBRE CROPS

68	Jute and jute-like fibres: production	91
69	Jute and jute-like fibres: yield	92
70	Jute and jute-like fibres: area harvested	93
71	Seed cotton: production	94
72	Seed cotton: yield	95
73	Seed cotton: area harvested	96
74	Raw silk: production (including waste)	97

OTHER CROPS

75	Natural rubber: production	101
76	Sugar cane: production	102
77	Sugar cane: yield	103
78	Sugar cane: area harvested	104
79	Coffee (green): production	105
80	Coffee (green): yield	106
81	Coffee (green): area harvested	107
82	Tea: production	108
83	Tea: yield	109
84	Tea: area harvested	110
85	Cocoa bean: production	111
86	Cocoa bean: yield	112
87	Cocoa bean: area harvested	113
88	Chillies and peppers: production	114
89	Chillies and peppers: yield	115
90	Chillies and peppers: area harvested	116

LIVESTOCK

91	Livestock production indices: total	119
92	Livestock production indices: per caput	120
93	Cattle: population	121
94	Buffalo: population	122
95	Pig: population	123
96	Sheep: population	124
97	Goat: population	125
98	Chicken: population	126
99	Duck: population	127
100	Meat total: production	128
101	Beef and veal: production	129
102	Buffalo meat: production	130
103	Pig meat: production	131
104	Mutton and lamb: production	132
105	Goat meat: production	133
106	Poultry meat: production	134
107	Milk total: production	135
108	Cow milk: production	136
109	Buffalo milk: production	137
110	Hen eggs: production	138

AGRICULTURAL TRADE

111	Agricultural products: imports in value	141
112	Agricultural products: exports in value	142
113	Cereals: imports in volume	143
114	Cereals: exports in volume	144
115	Rice: imports in volume	145
116	Rice: exports in volume	146
117	Wheat + flour, wheat equiv.: imports in volume	147
118	Wheat + flour, wheat equiv.: exports in volume	148
119	Palm oil: imports in volume	149
120	Palm oil: exports in volume	150
121	Natural rubber: imports in volume	151
122	Natural rubber: exports in volume	152
123	Coffee (green + roast): imports in volume	153
124	Coffee (green + roast): exports in volume	154
125	Tea: imports in volume	155
126	Tea: exports in volume	156
127	Cotton lint: imports in volume	157
128	Cotton lint: exports in volume	158
129	Jute: imports in volume	159
130	Jute: exports in volume	160
131	Silk: imports in volume	161
132	Silk: exports in volume	162

FISHERIES

133	Inland capture fisheries: production	165
134	Marine capture fisheries: production	166
135	Total capture fisheries: production	167
136	Aquaculture: production	168
137	Fish and fish products: imports and exports in volume	169
138	Fish and fish products: imports and exports in value	170

FORESTRY

139	Roundwood: production	173
140	Fuelwood and charcoal: production	174
141	Industrial roundwood: production	175
142	Sawlogs and veneer logs: production	176
143	Sawnwood and sleepers: production	177
144	Wood-based panels: production	178
145	Wood pulp: production	179
146	Paper and paperboard: production	180
147	Forestry products: imports in value	181
148	Forestry products: exports in value	182

NUTRITION

149	Per capita dietary energy supply (DES) and proportion of population with DES below minimum energy requirement	185
150	Daily per capita energy availability from major food groups: total vegetable and animal products	186
151	Daily per capita energy availability from major food groups: cereals, rootcrops and pulses	187
152	Daily per capita energy availability from major food groups: treenuts, oilcrops, fruits and vegetables	188
153	Daily per capita energy availability from major food groups: sugar and sweeteners, alcoholic beverage, vegetable oil and animal fats	189
154	Availability from major food groups as percentage of total Dietary energy supply: vegetable and animal products	190
155	Availability from major food groups as percentage of total Dietary energy supply: cereals, rootcrops and pulses	191
156	Availability from major food groups as percentage of total Dietary energy supply: treenuts, oilcrops, fruits and vegetables	192
157	Availability from major food groups as percentage of total dietary energy supply: sugar and sweeteners, alcoholic beverage, vegetable oil and animal fats	193
158	Desirable dietary patterns (DDP)	194
159	Percentage of protein and fats from animal sources in total dietary energy supply	195
160	Yearly per capita availability in kilogrammes from major food groups, 1998	196
161	Some population indicators affecting nutritional status	197

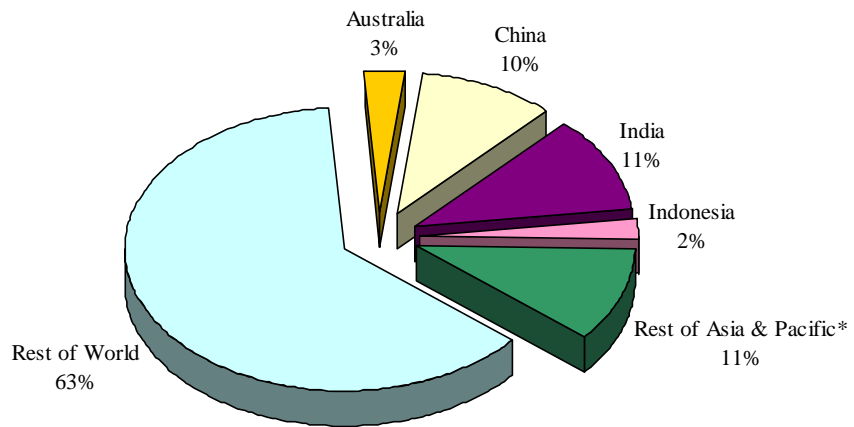
OTHER INDICATORS

162	Number and area of agricultural holdings	201
163	Organic agriculture	202
164	Population and agricultural labour force	203
165	Growth of GDP and agricultural GDP	204
166	Agriculture's share in GDP, growth rate of value added in agriculture and in industry	205
167	GNP per caput, its growth, inflation and ODA receipts	206
168	Food consumption, food imports and food aid	207

COUNTRY PROFILES

Developing Countries	
Southeast Asia	211
South Asia	216
Central Asia	220
Other Asia	222
Pacific Islands	225
Developed Countries	232

Countries in Asia-Pacific region with largest area of agricultural land in 2002



AGRICULTURAL LAND AND POPULATION

Countries in Asia-Pacific region with largest percentage of agricultural population in 2002

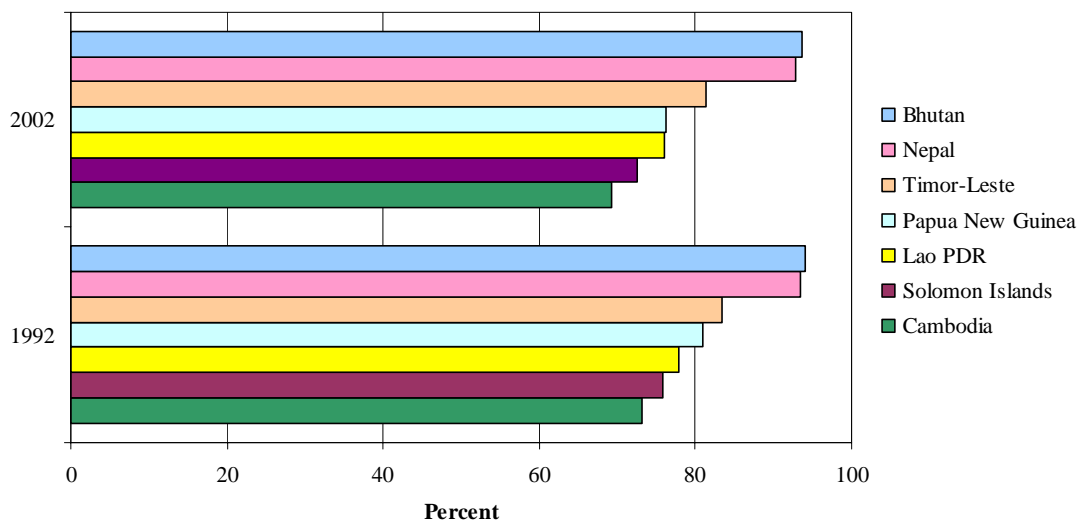


Table 1. Land use in 2002

Unit: 1000 ha

Country	Total Land Area	Arable and Permanent Crops Land	Permanent Pasture	Forests and Woodland*	Other Land	Land Use Distribution (in %)			
						Arable & Permanent Crops Land	Perma-nent Pasture	Forests & Woodland *	Other Land
DEVELOPING COUNTRIES									
SOUTHEAST ASIA									
1 . Cambodia	17 652	3 807 F	1 500 F	9 335	3 010	21.6	8.5	52.9	17.1
2 . Indonesia	181 157	33 700 F	11 177 F	104 986	31 294	18.6	6.2	58.0	17.3
3 . Lao PDR	23 080	1 001 F	878 F	12 561	8 640	4.3	3.8	54.4	37.4
4 . Malaysia	32 855	7 585 F	285 F	19 292	5 693	23.1	0.9	58.7	17.3
5 . Myanmar	65 755	10 611	314 F	34 419	20 411	16.1	0.5	52.3	31.0
6 . Philippines	29 817	10 700 F	1 500 F	5 789	11 828	35.9	5.0	19.4	39.7
7 . Thailand	51 089	19 367 F	800 F	14 762	16 160	37.9	1.6	28.9	31.6
8 . Timor-Leste	1 487	137 F	150 F	507	693	9.2	10.1	34.1	46.6
9 . Viet Nam	32 549	8 895 F	642 F	9 819	13 193	27.3	2.0	30.2	40.5
SOUTH ASIA									
10 . Bangladesh	13 017	8 429	600 F	1 334	2 654	64.8	4.6	10.2	20.4
11 . Bhutan	4 700	165 F	415 F	3 016	1 104	3.5	8.8	64.2	23.5
12 . India	297 319	170 115 F	11 062 F	64 113	52 029	57.2	3.7	21.6	17.5
13 . Maldives	30	12 F	1 F	1	16	40.0	3.3	3.3	53.3
14 . Nepal	14 300	3 294 F	1 737	3 900	5 369	23.0	12.1	27.3	37.5
15 . Pakistan	77 088	22 120	5 000 F	2 361	47 607	28.7	6.5	3.1	61.8
16 . Sri Lanka	6 463	1 916	440 F	1 940	2 167	29.6	6.8	30.0	33.5
CENTRAL ASIA									
17 . Kazakhstan	269 970	21 671 F	185 098 F	12 148	51 053	8.0	68.6	4.5	18.9
18 . Tajikistan	14 060	1 057 F	3 198	400	9 405	7.5	22.7	2.8	66.9
19 . Uzbekistan	41 424	4 827	22 219	1 969	12 409	11.7	53.6	4.8	30.0
OTHER ASIA									
20 . Afghanistan	65 209	8 054 F	30 000	1 351	25 804	12.4	46.0	2.1	39.6
21 . China	932 742	153 956 F	400 001 F	163 480	215 305	16.5	42.9	17.5	23.1
22 . DPR Korea	12 041	2 700 F	50 F	8 210	1 081	22.4	0.4	68.2	9.0
23 . Iran (Islamic Rep. of)	163 620	17 088 F	44 000 F	7 299	95 233	10.4	26.9	4.5	58.2
24 . Mongolia	156 650	1 200 F	129 300 F	10 645	15 505	0.8	82.5	6.8	9.9
25 . Rep. of Korea	9 873	1 877	56	6 248	1 692	19.0	0.6	63.3	17.1
PACIFIC ISLANDS									
26 . Cook Islands**	23	6 F	0	16	1	26.1	0.0	69.6	4.3
27 . Fiji Islands	1 827	285 F	175 F	815	552	15.6	9.6	44.6	30.2
28 . Kiribati	73	39 F	0	28	6	53.4	0.0	38.4	8.2
29 . Marshall Islands	18	10 F	4 F	0	4	55.6	22.2	0.0	22.2
30 . Micronesia, Fed States of	70	36 F	11 F	15	8	51.4	15.7	21.4	11.4
31 . Nauru	2	0	0	0	2	0.0	0.0	0.0	100.0
32 . Niue	26	7 F	1 F	6	12	26.9	3.8	23.1	46.2
33 . Palau	46	6 F	3 F	35	2	13.0	6.5	76.1	4.3
34 . Papua New Guinea	45 286	870 F	175 F	30 601	13 640	1.9	0.4	67.6	30.1
35 . Samoa	283	129	2	105	47	45.6	0.7	37.1	16.6
36 . Solomon Islands	2 799	75 F	40 F	2 536	148	2.7	1.4	90.6	5.3
37 . Tonga	72	48 F	4 F	4	16	66.7	5.6	5.6	22.2
38 . Tuvalu	3	0	0	0	3	0.0	0.0	0.0	100.0
39 . Vanuatu	1 219	120 F	42 F	447	610	9.8	3.4	36.7	50.0
SUB-TOTAL	2 565 694	515 915	850 880	534 499	664 400	20.1	33.2	20.8	25.9
DEVELOPED COUNTRIES									
40 . Australia	768 230	48 600 F	398 400 F	154 539	166 691	6.3	51.9	20.1	21.7
41 . Japan	36 450	4 762	428	24 081	7 179	13.1	1.2	66.1	19.7
42 . New Zealand	26 799	3 372 F	13 863	7 946	1 618	12.6	51.7	29.7	6.0
SUB-TOTAL	831 479	56 734	412 691	186 566	175 488	6.8	49.6	22.4	21.1
ASIA & PACIFIC*	3 397 174	572 649	1 263 571	721 065	839 889	16.9	37.2	21.2	24.7
REST OF WORLD	9 669 768	961 817	2 221 768	3 147 731	3 338 452	9.9	23.0	32.6	34.5
WORLD	13 066 940	1 534 466	3 485 339	3 868 796	4 178 339	11.7	26.7	29.6	32.0

* data for forests and woodland, from the Global Forest Resources Assessment of 2000, is sum of natural forest and plantations.

** land in compact plantation separated from forests and woodland

Table 2. Agricultural land**

Unit: 1000 ha

Country	Total Land Area	Agricultural Land		Agricultural Land as % of Total Land	
		1992	2002	1992	2002
DEVELOPING COUNTRIES					
SOUTHEAST ASIA					
1 . Cambodia	17 652	3 800 F	3 807 F	21.5	21.6
2 . Indonesia	181 157	29 551 F	33 700 F	16.3	18.6
3 . Lao PDR	23 080	864 F	1 001 F	3.7	4.3
4 . Malaysia	32 855	7 395 F	7 585 F	22.5	23.1
5 . Myanmar	65 755	10 039	10 611	15.3	16.1
6 . Philippines	29 817	9 900 F	10 700 F	33.2	35.9
7 . Thailand	51 089	20 574	19 367 F	40.3	37.9
8 . Timor-Leste	1 487	130 F	137 F	8.7	9.2
9 . Viet Nam	32 549	6 697	8 895 F	20.6	27.3
SOUTH ASIA					
10 . Bangladesh	13 017	8 328	8 429	64.0	64.8
11 . Bhutan	4 700	135 F	165 F	2.9	3.5
12 . India	297 319	169 270 F	170 115 F	56.9	57.2
13 . Maldives	30	8 F	12 F	26.7	40.0
14 . Nepal	14 300	2 423 F	3 294 F	16.9	23.0
15 . Pakistan	77 088	21 060	22 120	27.3	28.7
16 . Sri Lanka	6 463	1 905 F	1 916	29.5	29.6
CENTRAL ASIA					
17 . Kazakhstan	269 970	35 201	21 671 F	13.0	8.0
18 . Tajikistan	14 060	985 F	1 057 F	7.0	7.5
19 . Uzbekistan	41 424	4 854	4 827	11.7	11.7
OTHER ASIA					
20 . Afghanistan	65 209	8 054 F	8 054 F	12.4	12.4
21 . China	932 742	131 783 F	153 956 F	14.1	16.5
22 . DPR Korea	12 041	2 480 F	2 700 F	20.6	22.4
23 . Iran (Islamic Rep. of)	163 620	18 500	17 088 F	11.3	10.4
24 . Mongolia	156 650	1 363	1 200 F	0.9	0.8
25 . Rep. of Korea	9 873	2 070	1 877	21.0	19.0
PACIFIC ISLANDS					
26 . Cook Islands	23	5	6 F	21.7	26.1
27 . Fiji Islands	1 827	260 F	285 F	14.2	15.6
28 . Kiribati	73	39 F	39 F	53.4	53.4
29 . Marshall Islands	18	-	10 F	-	55.6
30 . Micronesia, Fed States of	70	-	36 F	0.0	51.4
31 . Nauru	2	0	0	0.0	0.0
32 . Niue	26	7 F	7 F	26.9	26.9
33 . Palau	46	-	6 F	-	13.0
34 . Papua New Guinea	45 286	782 F	870 F	1.7	1.9
35 . Samoa	283	122 F	129	43.1	45.6
36 . Solomon Islands	2 799	72 F	75 F	2.6	2.7
37 . Tonga	72	48 F	48 F	66.7	66.7
38 . Tuvalu	3	0	0	0.0	0.0
39 . Vanuatu	1 219	120 F	120 F	9.8	9.8
SUB-TOTAL	2 565 694	498 824	515 915	19.4	20.1
DEVELOPED COUNTRIES					
40 . Australia	768 230	47 378 F	48 600 F	6.2	6.3
41 . Japan	36 450	5 165 F	4 762	14.2	13.1
42 . New Zealand	26 799	3 460	3 372 F	12.9	12.6
SUB-TOTAL	831 479	56 003	56 734	6.7	6.8
ASIA & PACIFIC*	3 397 174	554 827	572 649	16.3	16.9
REST OF WORLD	9 669 768	951 075	961 817	9.8	9.9
WORLD	13 066 940	1 505 902	1 534 466	11.5	11.7

** "Agricultural Land" as used in this publication refers to "Arable and Permanent Cropped Land", which excludes permanent meadows and pastures, fallow and resulting from shifting cultivation, and land under trees grown for food or timber. Double cropped areas are counted only once.

Table 3. Agricultural population

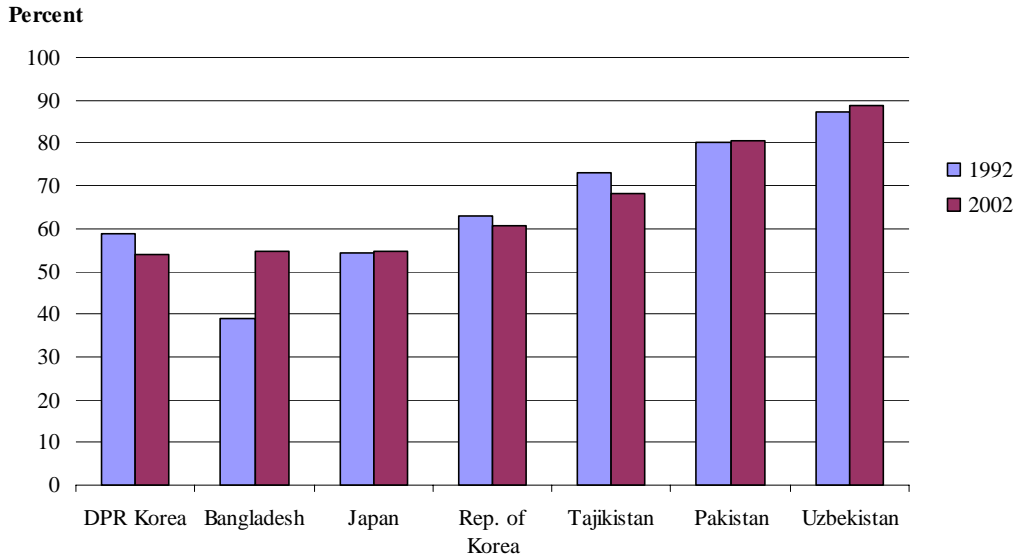
Unit: 1000

Country	Total Population		Agricultural Population		% Agricultural Population to Total Population	
	1992	2002	1992	2002	1992	2002
DEVELOPING COUNTRIES						
SOUTHEAST ASIA						
1 . Cambodia	10 437	13 810	7 633	9 572	73.1	69.3
2 . Indonesia	188 260	217 131	93 263	92 877	49.5	42.8
3 . Lao PDR	4 350	5 529	3 384	4 209	77.8	76.1
4 . Malaysia	18 817	23 965	4 549	3 909	24.2	16.3
5 . Myanmar	41 927	48 852	30 467	33 995	72.7	69.6
6 . Philippines	63 989	78 580	28 361	29 972	44.3	38.1
7 . Thailand	55 806	62 193	30 872	29 465	55.3	47.4
8 . Timor-Leste	795	739	663	601	83.4	81.3
9 . Viet Nam	68 901	80 278	48 565	53 401	70.5	66.5
SOUTH ASIA						
10 . Bangladesh	114 885	143 809	72 812	77 262	63.4	53.7
11 . Bhutan	1 745	2 190	1 640	2 052	94.0	93.7
12 . India	880 166	1 049 549	504 747	553 281	57.3	52.7
13 . Maldives	229	309	82	78	35.8	25.2
14 . Nepal	19 518	24 609	18 238	22 864	93.4	92.9
15 . Pakistan	116 545	149 911	63 853	74 841	54.8	49.9
16 . Sri Lanka	17 242	18 910	8 379	8 641	48.6	45.7
CENTRAL ASIA						
17 . Kazakhstan	16 849	15 469	3 969	2 908	23.6	18.8
18 . Tajikistan	5 509	6 195	2 163	2 010	39.3	32.4
19 . Uzbekistan	21 438	25 705	7 161	6 765	33.4	26.3
OTHER ASIA						
20 . Afghanistan	15 780	22 930	10 993	15 201	69.7	66.3
21 . China	1 189 560	1 302 307	842 890	852 330	70.9	65.4
22 . DPR Korea	20 554	22 541	7 469	6 460	36.3	28.7
23 . Iran (Islamic Rep. of)	59 275	68 070	18 315	17 357	30.9	25.5
24 . Mongolia	2 303	2 559	699	586	30.4	22.9
25 . Rep. of Korea	43 739	47 430	6 276	3 663	14.3	7.7
PACIFIC ISLANDS						
26 . Cook Islands	19	18	8	6	42.1	33.3
27 . Fiji Islands	738	831	325	324	44.0	39.0
28 . Kiribati	74	87	23	23	31.1	26.4
29 . Marshall Islands	46	52	14	14	30.4	26.9
30 . Micronesia, Fed States of	101	108	30	28	29.7	25.9
31 . Nauru	10	13	3	3	30.0	23.1
32 . Niue	2	2	1	1	50.0	50.0
33 . Palau	16	20	5	5	31.3	25.0
34 . Papua New Guinea	4 336	5 586	3 506	4 258	80.9	76.2
35 . Samoa	162	176	66	58	40.7	33.0
36 . Solomon Islands	340	463	258	336	75.9	72.6
37 . Tonga	99	103	41	34	41.4	33.0
38 . Tuvalu	9	10	4	3	44.4	30.0
39 . Vanuatu	158	207	67	73	42.4	35.3
SUB-TOTAL	2 984 729	3 441 246	1 821 794	1 909 466	61.0	55.5
DEVELOPED COUNTRIES						
40 . Australia	17 374	19 544	921	865	5.3	4.4
41 . Japan	124 373	127 478	7 722	4 381	6.2	3.4
42 . New Zealand	3 450	3 846	337	329	9.8	8.6
SUB-TOTAL	145 197	150 868	8 980	5 575	6.2	3.7
ASIA & PACIFIC*	3 129 928	3 592 116	1 830 775	1 915 042	58.5	53.3
REST OF WORLD	2 301 043	2 632 862	647 025	673 383	28.1	25.6
WORLD	5 430 971	6 224 978	2 477 800	2 588 425	45.6	41.6

Table 4. Agricultural land and population

Country	Ratio of Agricultural Land to Agricultural Population Unit: ha/caput		Average Annual % change	
	1992	2002	Agricultural Land 1992-2002	Agricultural Population 1992-2002
DEVELOPING COUNTRIES				
SOUTHEAST ASIA				
1 . Cambodia	0.50	0.40	0.0	2.3
2 . Indonesia	0.32	0.36	1.3	0.0
3 . Lao PDR	0.26	0.24	1.5	2.2
4 . Malaysia	1.63	1.94	0.3	-1.5
5 . Myanmar	0.33	0.31	0.6	1.1
6 . Philippines	0.35	0.36	0.8	0.6
7 . Thailand	0.67	0.66	-0.6	-0.5
8 . Timor-Leste	0.20	0.23	0.5	-0.9
9 . Viet Nam	0.14	0.17	2.9	1.0
SOUTH ASIA				
10 . Bangladesh	0.11	0.11	0.1	0.6
11 . Bhutan	0.08	0.08	2.1	2.3
12 . India	0.34	0.31	0.1	0.9
13 . Maldives	0.10	0.15	4.4	-0.5
14 . Nepal	0.13	0.14	3.2	2.3
15 . Pakistan	0.33	0.30	0.5	1.6
16 . Sri Lanka	0.23	0.22	0.1	0.3
CENTRAL ASIA				
17 . Kazakhstan	8.87	7.45	-4.7	-3.1
18 . Tajikistan	0.46	0.53	0.7	-0.7
19 . Uzbekistan	0.68	0.71	-0.1	-0.6
OTHER ASIA				
20 . Afghanistan	0.73	0.53	0.0	3.3
21 . China	0.16	0.18	1.6	0.1
22 . DPR Korea	0.33	0.42	0.9	-1.4
23 . Iran (Islamic Rep. of)	1.01	0.98	-0.7	-0.5
24 . Mongolia	1.95	2.05	-1.2	-1.8
25 . Rep. of Korea	0.33	0.51	-1.0	-5.2
PACIFIC ISLANDS				
26 . Cook Islands	0.63	1.00	2.6	-2.7
27 . Fiji Islands	0.80	0.88	1.0	0.0
28 . Kiribati	1.70	1.70	0.0	0.0
29 . Marshall Islands	-	0.71	-	0.0
30 . Micronesia, Fed States of	-	1.29	-	-0.7
31 . Nauru	0.00	0.00	0.0	0.0
32 . Niue	7.00	7.00	0.0	0.0
33 . Palau	-	1.20	1.1	0.0
34 . Papua New Guinea	0.22	0.20	0.0	2.0
35 . Samoa	1.85	2.22	1.1	-1.3
36 . Solomon Islands	0.28	0.22	0.4	2.7
37 . Tonga	1.17	1.41	0.0	-1.9
38 . Tuvalu	0.00	0.00	0.0	-2.5
39 . Vanuatu	1.79	1.64	0.0	0.9
SUB-TOTAL	0.27	0.27	0.1	0.1
DEVELOPED COUNTRIES				
40 . Australia	51.44	56.18	0.6	-0.6
41 . Japan	0.67	1.09	-0.8	-5.5
42 . New Zealand	10.27	10.25	-0.2	-0.2
AVERAGE	6.24	10.18	-9.5	0.2
ASIA & PACIFIC*	0.30	0.30	0.3	0.5
REST OF WORLD	1.47	1.43	0.1	0.4
WORLD	0.61	0.59	0.2	0.4

Countries in Asia-Pacific region with largest percent of agricultural land that was irrigated in 2002



AGRICULTURAL INPUTS

Countries in Asia-Pacific region with highest consumption of mineral fertilizers per hectare of agricultural land in 2002

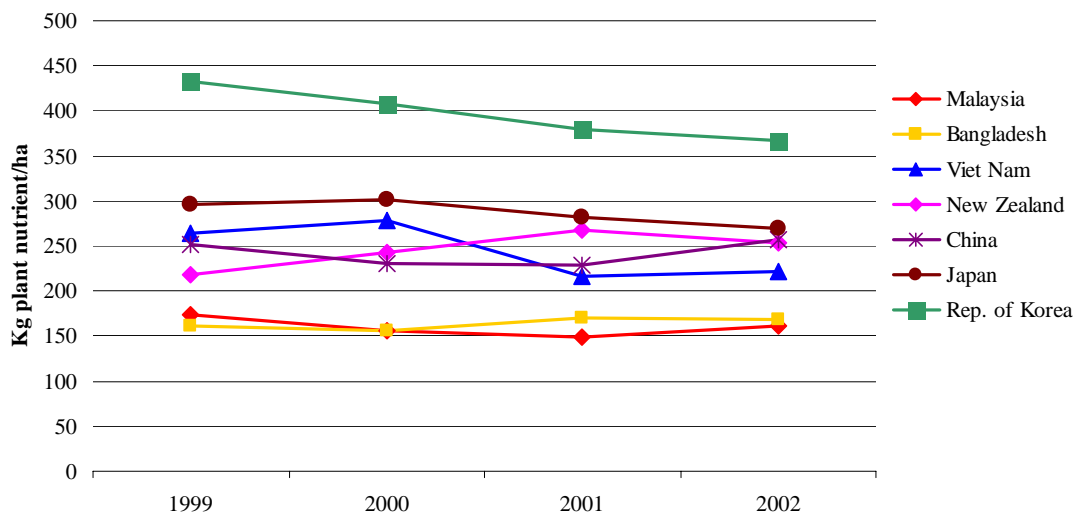


Table 5. Irrigation*

Unit: 1000 ha

Country	1992	1999	2000	2001	2002	Annual Growth Rate 1992-2002
DEVELOPING COUNTRIES						
SOUTHEAST ASIA						
1 . Cambodia	260 F	270 F	270 F	270 F	270 F	0.2 %
2 . Indonesia	4 500	4 800 F	4 815 F	4 815 F	4 815 F	0.7 %
3 . Lao PDR	145 F	172 F	175 F	175 F	175 F	2.0 %
4 . Malaysia	350 F	365 F	365 F	365 F	365 F	0.4 %
5 . Myanmar	998	1 841	1 910	1 985	1 996	7.0 %
6 . Philippines	1 550 F	1 550 F	1 550 F	1 550 F	1 550 F	0.0 %
7 . Thailand	4 433	4 948	4 998	4 924	4 957 F	1.2 %
8 . Timor-Leste	-	-	-	-	-	
9 . Viet Nam	2 900 F	3 000 F	3 000 F	3 000 F	3 000 F	0.2 %
SOUTH ASIA						
10 . Bangladesh	3 229	3 985	4 187	4 421	4 597	3.8 %
11 . Bhutan	39 F	40 F	40 F	40 F	40 F	0.3 %
12 . India	48 500 F	57 077	57 238	57 158 F	57 198 F	1.7 %
13 . Maldives	-	-	-	-	-	
14 . Nepal	1 020 F	1 135 F	1 135 F	1 135 F	1 135 F	0.9 %
15 . Pakistan	16 850	17 950	18 090	17 820	17 800 F	0.6 %
16 . Sri Lanka	550 F	662	665	597	638	1.9 %
CENTRAL ASIA						
17 . Kazakhstan	2 250 F	2 350 F	2 350 F	2 350 F	2 350 F	0.4 %
18 . Tajikistan	718 *	719 F	719 F	719 F	719 F	0.0 %
19 . Uzbekistan	4 239	4 281 F	4 281 F	4 281 F	4 281 F	0.1 %
OTHER ASIA						
20 . Afghanistan	2 400 F	2 386 F	2 386 F	2 386 F	2 386 F	-0.1 %
21 . China	49 152	53 740	54 402	54 831	54 937	1.3 %
22 . DPR Korea	1 460 F	1 460 F	1 460 F	1 460 F	1 460 F	0.0 %
23 . Iran (Islamic Rep. of)	7 000 F	7 562 F	7 500 F	7 500 F	7 500 F	0.6 %
24 . Mongolia	82 F	84 F	84 F	84 F	84 F	0.2 %
25 . Rep. of Korea	1 300 F	1 153	1 149	1 146	1 138	-1.3 %
PACIFIC ISLANDS						
26 . Cook Islands	-	-	-	-	-	
27 . Fiji Islands	3	3 F	3 F	3 F	3 F	0.0 %
28 . Kiribati	-	-	-	-	-	
29 . Marshall Islands	-	-	-	-	-	
30 . Micronesia, Fed States of	-	-	-	-	-	
31 . Nauru	-	-	-	-	-	
32 . Niue	-	-	-	-	-	
33 . Palau	-	-	-	-	-	
34 . Papua New Guinea	-	-	-	-	-	
35 . Samoa	-	-	-	-	-	
36 . Solomon Islands	-	-	-	-	-	
37 . Tonga	-	-	-	-	-	
38 . Tuvalu	-	-	-	-	-	
39 . Vanuatu	-	-	-	-	-	
SUB-TOTAL	153 928	171 533	172 772	173 015	173 394	1.3 %
DEVELOPED COUNTRIES						
40 . Australia	2 069	2 251	2 385	2 465 F	2 545	1.4 %
41 . Japan	2 802	2 659	2 641	2 624	2 607	-0.7 %
42 . New Zealand	285 F	285 F	285 F	285 F	285 F	0.0 %
SUB-TOTAL	5 156	5 195	5 311	5 374	5 437	0.2 %
ASIA & PACIFIC*	159 084	176 728	178 083	178 389	178 831	1.2 %
REST OF WORLD	93 296	96 590	97 105	97 492	97 888	0.4 %
WORLD	252 380	273 318	275 188	275 881	276 719	1.0 %

* refers to net irrigated area

Table 6. Irrigated land as proportion of agricultural land

Unit: 1000 ha

Country	Agricultural Land		Irrigated Land		% Irrigated Land to Agricultural Land	
	1992	2002	1992	2002	1992	2002
DEVELOPING COUNTRIES						
SOUTHEAST ASIA						
1 . Cambodia	3 800 F	3 807 F	260 F	270 F	6.8	7.1
2 . Indonesia	29 551 F	33 700 F	4 500	4 815 F	15.2	14.3
3 . Lao PDR	864 F	1 001 F	145 F	175 F	16.8	17.5
4 . Malaysia	7 395 F	7 585 F	350 F	365 F	4.7	4.8
5 . Myanmar	10 039	10 611	998	1 996	9.9	18.8
6 . Philippines	9 900 F	10 700 F	1 550 F	1 550 F	15.7	14.5
7 . Thailand	20 574	19 367 F	4 433	4 957 F	21.5	25.6
8 . Timor-Leste	130 F	137 F	-	-	0.0	0.0
9 . Viet Nam	6 697	8 895 F	2 900 F	3 000 F	43.3	33.7
SOUTH ASIA						
10 . Bangladesh	8 328	8 429	3 229	4 597	38.8	54.5
11 . Bhutan	135 F	165 F	39 F	40 F	28.9	24.2
12 . India	169 270 F	170 115 F	48 500 F	57 198 F	28.7	33.6
13 . Maldives	8 F	12 F	-	-	0.0	0.0
14 . Nepal	2 423 F	3 294 F	1 020 F	1 135 F	42.1	34.5
15 . Pakistan	21 060	22 120	16 850	17 800 F	80.0	80.5
16 . Sri Lanka	1 905 F	1 916	550 F	638	28.9	33.3
CENTRAL ASIA						
17 . Kazakhstan	35 201	21 671 F	2 250 F	2 350 F	6.4	10.8
18 . Tajikistan	985 F	1 057 F	718 *	719 F	72.9	68.0
19 . Uzbekistan	4 854	4 827	4 239	4 281 F	87.3	88.7
OTHER ASIA						
20 . Afghanistan	8 054 F	8 054 F	2 400 F	2 386 F	29.8	29.6
21 . China	131 783 F	153 956 F	49 152	54 937	37.3	35.7
22 . DPR Korea	2 480 F	2 700 F	1 460 F	1 460 F	58.9	54.1
23 . Iran (Islamic Rep. of)	18 500	17 088 F	7 000 F	7 500 F	37.8	43.9
24 . Mongolia	1 363	1 200 F	82 F	84 F	6.0	7.0
25 . Rep. of Korea	2 070	1 877	1 300 F	1 138	62.8	60.6
PACIFIC ISLANDS						
26 . Cook Islands	5	6 F	-	-	-	-
27 . Fiji Islands	260 F	285 F	3	3 F	1.2	1.1
28 . Kiribati	39 F	39 F	-	-	-	-
29 . Marshall Islands	-	10 F	-	-	-	-
30 . Micronesia, Fed States of	-	36 F	-	-	-	-
31 . Nauru	0	0	-	-	-	-
32 . Niue	7 F	7 F	-	-	-	-
33 . Palau	-	6 F	-	-	-	-
34 . Papua New Guinea	782 F	870 F	-	-	-	-
35 . Samoa	122 F	129	-	-	-	-
36 . Solomon Islands	72 F	75 F	-	-	-	-
37 . Tonga	48 F	48 F	-	-	-	-
38 . Tuvalu	0	0	-	-	-	-
39 . Vanuatu	120 F	120 F	-	-	-	-
SUB-TOTAL	498 824	515 915	153 928	173 394	30.9	33.6
DEVELOPED COUNTRIES						
40 . Australia	47 378 F	48 600 F	2 069	2 545	4.4	5.2
41 . Japan	5 165 F	4 762	2 802	2 607	54.2	54.7
42 . New Zealand	3 460	3 372 F	285 F	285 F	8.2	8.5
SUB-TOTAL	56 003	56 734	5 156	5 437	9.2	9.6
ASIA & PACIFIC*	554 827	572 649	159 084	178 831	28.7	31.2
REST OF WORLD	951 075	961 817	93 296	97 888	9.8	10.2
WORLD	1 505 902	1 534 466	252 380	276 719	16.8	18.0

Table 7. Mineral fertilizers : consumption

Unit: 1000 MT (plant nutrient)

Country	1992	1999	2000	2001	2002	Annual Growth Rate 1992-2002
DEVELOPING COUNTRIES						
SOUTHEAST ASIA						
1 . Cambodia	11.0	.0	.0	.0	.0	-2.1 %
2 . Indonesia	2 583.0 *	2 524.5 *	2 493.5 *	2 638.3 *	2 992.0 *	1.2 %
3 . Lao PDR	3.4	9.9	6.0	12.3	7.0	13.6 %
4 . Malaysia	964.9 *	1 323.8 *	1 188.3	1 130.7	1 230.0	2.1 %
5 . Myanmar	67.2	163.1	205.7	95.7 *	132.3	4.3 %
6 . Philippines	505.4	743.8	734.6	781.4	723.0	3.7 %
7 . Thailand	1 117.8 *	1 763.0 *	1 560.9 *	1 684.1 *	1 700.6 *	3.2 %
8 . Timor-Leste	-	-	-	-	-	
9 . Viet Nam	766.4 *	2 057.6 *	2 267.0 *	1 906.5 *	1 975.2 *	11.2 %
SOUTH ASIA						
10 . Bangladesh	998.8	1 365.7 *	1 320.2	1 449.6	1 423.6	4.1 %
11 . Bhutan	.1	.0	.0	.0	.0	0.0 %
12 . India	12 154.4	18 056.7	16 702.3	17 344.3	16 122.6	3.8 %
13 . Maldives	-	-	-	-	-	
14 . Nepal	82.0	94.4 *	73.0	72.5	89.0	-0.2 %
15 . Pakistan	2 147.9	2 833.0	2 962.5	2 944.5	2 962.8	3.8 %
16 . Sri Lanka	183.7	259.1	247.0	244.1	284.2	3.4 %
CENTRAL ASIA						
17 . Kazakhstan	475.0	34.2	37.0	50.4 *	64.9 *	-20.6 %
18 . Tajikistan	128.0	10.6	8.9	12.1	27.9	-20.7 %
19 . Uzbekistan	730.0	774.8	731.2 *	720.3 *	718.3 *	3.1 %
OTHER ASIA						
20 . Afghanistan	45.8	5.0	5.0	18.4	20.8	-10.8 %
21 . China	29 202.0	36 439.0 *	34 217.9 *	35 345.6 *	39 604.7 *	3.2 %
22 . DPR Korea	782.5 *	253.0 *	256.0 *	281.4 *	266.2 *	-6.8 %
23 . Iran (Islamic Rep. of)	1 350.0 *	1 330.4 *	1 393.6	1 325.6	1 291.6	2.8 %
24 . Mongolia	15.1 *	2.8	3.4	3.2	4.5	5.3 %
25 . Rep. of Korea	963.7 *	821.1	783.3	716.6 *	689.9 *	-3.5 %
PACIFIC ISLANDS						
26 . Cook Islands	-	-	-	-	-	
27 . Fiji Islands	13.1 *	14.4 *	7.5 *	10.0 *	12.3 *	-4.5 %
28 . Kiribati	-	-	-	-	-	
29 . Marshall Islands	-	-	-	-	-	
30 . Micronesia, Fed States of	-	-	-	-	-	
31 . Nauru	-	-	-	-	-	
32 . Niue	-	-	-	-	-	
33 . Palau	-	-	-	-	-	
34 . Papua New Guinea	12.8 *	9.3 *	11.7 *	11.8 *	11.8 *	-2.0 %
35 . Samoa	.0	1.3	4.9	5.3 *	3.5 *	34.9 %
36 . Solomon Islands	-	-	-	-	-	
37 . Tonga	-	-	-	-	-	
38 . Tuvalu	-	-	-	-	-	
39 . Vanuatu	-	-	-	-	-	
SUB-TOTAL	55 303.8	70 890.5	67 221.3	68 804.7	72 358.6	3.1 %
DEVELOPED COUNTRIES						
40 . Australia	1 417.9 *	2 353.0 *	2 275.0 *	2 383.3 *	2 279.6 *	5.2 %
41 . Japan	1 784.0	1 438.7	1 452.3	1 354.0	1 284.0	-3.4 %
42 . New Zealand	534.5 *	716.0 *	812.7	901.1	852.9	4.3 %
SUB-TOTAL	3 736.4	4 507.7	4 540.0	4 638.4	4 416.5	1.8 %
ASIA & PACIFIC*	59 040.2	75 398.2	71 761.3	73 443.1	76 775.1	3.0 %
REST OF WORLD	66 298.8	64 903.3	63 436.9	64 661.5	64 905.7	0.0 %
WORLD	125 339.1	140 301.5	135 198.1	138 104.6	141 680.8	1.5 %

Table 8. Mineral fertilizers : consumption per ha of agricultural land

Unit: kg plant nutrient/ha

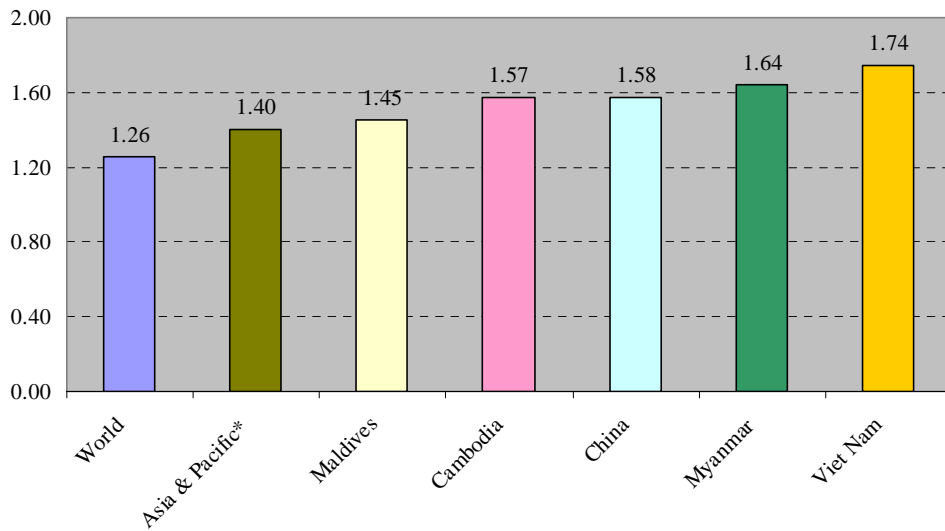
Country	1992	1999	2000	2001	2002
DEVELOPING COUNTRIES					
SOUTHEAST ASIA					
1 . Cambodia	2.9	.0	.0	.0	.0
2 . Indonesia	87.4	77.1	74.2	78.5	88.8
3 . Lao PDR	3.9	10.4	6.3	12.8	7.0
4 . Malaysia	130.5	174.1	156.2	149.1	162.2
5 . Myanmar	6.7	15.9	19.6	9.0	12.5
6 . Philippines	51.1	70.2	69.0	73.0	67.6
7 . Thailand	54.3	91.7	81.1	87.2	87.8
8 . Timor-Leste	-	-	-	-	-
9 . Viet Nam	114.4	264.8	278.6	215.6	222.1
SOUTH ASIA					
10 . Bangladesh	119.9	161.8	155.6	170.8	168.9
11 . Bhutan	0.7	.0	.0	.0	.0
12 . India	71.8	106.4	98.4	102.0	94.8
13 . Maldives	-	-	-	-	-
14 . Nepal	33.8	30.6	23.3	22.7	27.0
15 . Pakistan	102.0	129.5	134.9	132.9	133.9
16 . Sri Lanka	96.4	136.0	129.3	127.7	148.3
CENTRAL ASIA					
17 . Kazakhstan	13.5	1.6	1.7	2.3	3.0
18 . Tajikistan	129.9	10.2	8.4	11.4	26.4
19 . Uzbekistan	150.4	160.3	151.5	149.1	148.8
OTHER ASIA					
20 . Afghanistan	5.7	.6	.6	2.3	2.6
21 . China	221.6	251.4	230.2	228.1	257.2
22 . DPR Korea	315.5	93.7	94.8	104.2	98.6
23 . Iran (Islamic Rep. of)	73.0	72.8	85.4	80.1	75.6
24 . Mongolia	11.1	2.4	2.9	2.7	3.7
25 . Rep. of Korea	465.6	432.4	408.4	379.4	367.6
PACIFIC ISLANDS					
26 . Cook Islands	-	-	-	-	-
27 . Fiji Islands	50.4	50.5	26.3	35.1	43.1
28 . Kiribati	-	-	-	-	-
29 . Marshall Islands	-	-	-	-	-
30 . Micronesia, Fed States of	-	-	-	-	-
31 . Nauru	-	-	-	-	-
32 . Niue	-	-	-	-	-
33 . Palau	-	-	-	-	-
34 . Papua New Guinea	16.4	11.0	13.7	13.7	13.6
35 . Samoa	.0	10.6	38.7	41.1	27.1
36 . Solomon Islands	-	-	-	-	-
37 . Tonga	-	-	-	-	-
38 . Tuvalu	-	-	-	-	-
39 . Vanuatu	-	-	-	-	-
SUB-TOTAL	110.9	140.4	132.3	133.3	140.3
DEVELOPED COUNTRIES					
40 . Australia	29.9	48.8	45.0	46.6	46.9
41 . Japan	345.4	295.7	300.7	282.4	269.6
42 . New Zealand	154.5	218.3	243.3	267.2	252.9
SUB-TOTAL	66.7	80.0	77.2	78.3	77.8
ASIA & PACIFIC*	106.4	134.3	128.7	127.7	134.1
REST OF WORLD	69.7	67.7	65.7	67.3	67.5
WORLD	83.2	92.3	88.7	89.9	92.3

Table 9. Agricultural tractors : number in use

Unit: Number

Country	1992	1999	2000	2001	2002	Annual Growth Rate 1992-2002
DEVELOPING COUNTRIES						
SOUTHEAST ASIA						
1 . Cambodia	1 190 F	1 855	2 160	2 529	2 600 F	9.4 %
2 . Indonesia	38 402	93 405 F	101 046	88 412	94 288 F	9.5 %
3 . Lao PDR	940 F	1 070 F	1 080 F	1 080 F	1 080 F	1.3 %
4 . Malaysia	31 200 F	43 300 F	43 300 F	43 300 F	43 300 F	2.7 %
5 . Myanmar	10 000	10 209	10 606	10 304	9 300	-0.2 %
6 . Philippines	11 500 F	11 500 F	11 500 F	11 500 F	11 500 F	0.0 %
7 . Thailand	79 801	220 000 F	220 000 F	220 000 F	220 000 F	10.6 %
8 . Timor-Leste	115 F	115 F	115 F	115 F	115 F	0.0 %
9 . Viet Nam	37 627	145 850	162 746	163 000 F	163 000 F	14.8 %
SOUTH ASIA						
10 . Bangladesh	5 300 F	5 450 F	5 530 F	5 530 F	5 530 F	0.5 %
11 . Bhutan	-	-	-	-	-	-
12 . India	1 136 160	1 520 000 F	1 525 000 F	1 525 000 F	1 525 000 F	3.1 %
13 . Maldives	-	-	-	-	-	-
14 . Nepal	4 600 F	4 600 F	4 600 F	4 600 F	4 600 F	0.0 %
15 . Pakistan	283 300	320 500 F	320 500 F	320 500 F	320 500 F	1.3 %
16 . Sri Lanka	6 000 F	8 000 F	8 800 F	9 700 F	10 500 F	5.9 %
CENTRAL ASIA						
17 . Kazakhstan	217 435	54 982	49 652	49 000 F	49 000 F	-17.0 %
18 . Tajikistan	35 727	25 745 F	24 319 F	22 893 F	20 035	-5.2 %
19 . Uzbekistan	180 000 F	170 000 F	170 000 F	170 000 F	170 000 F	-0.3 %
OTHER ASIA						
20 . Afghanistan	840 F	840 F	840 F	840 F	840 F	0.0 %
21 . China	770 629	798 510	989 143	844 192	926 031	2.6 %
22 . DPR Korea	67 827 F	65 090 F	64 699 F	64 308 F	64 250 F	-0.6 %
23 . Iran (Islamic Rep. of)	228 005	233 000 F	237 000 F	237 000 F	237 000 F	0.5 %
24 . Mongolia	9 000 F	5 200 F	4 700	5 000	5 000 F	-6.4 %
25 . Rep. of Korea	64 159	176 146	191 631	201 089	206 371	13.0 %
PACIFIC ISLANDS						
26 . Cook Islands	185	165 F	165 F	165 F	165 F	-1.6 %
27 . Fiji Islands	6 952	7 000 F	7 000 F	7 000 F	7 000 F	0.0 %
28 . Kiribati	18 F	18 F	18 F	18 F	18 F	0.0 %
29 . Marshall Islands	-	-	-	-	-	-
30 . Micronesia, Fed States of	-	10 F	10 F	10 F	10 F	0.0 %
31 . Nauru	-	-	-	-	-	-
32 . Niue	10 F	10 F	10 F	10 F	10 F	0.0 %
33 . Palau	-	5 F	5 F	5 F	5 F	0.0 %
34 . Papua New Guinea	1 140 F	1 160 F	1 160 F	1 160 F	1 160 F	0.2 %
35 . Samoa	76 F	80 F	84 F	89 F	94	1.9 %
36 . Solomon Islands	8 F	9 F	9 F	9 F	9 F	1.5 %
37 . Tonga	135 F	146 F	150 F	150 F	150 F	0.9 %
38 . Tuvalu	1 F	1 F	1 F	1 F	1 F	0.0 %
39 . Vanuatu	75 F	75 F	75 F	75 F	75 F	0.0 %
SUB-TOTAL	3 228 357	3 924 046	4 157 654	4 008 584	4 098 537	2.6 %
DEVELOPED COUNTRIES						
40 . Australia	315 000 F	315 000 F	315 000 F	315 000 F	315 000 F	0.0 %
41 . Japan	2 003 000	2 120 000	2 028 000	2 028 000 F	2 028 000 F	0.0 %
42 . New Zealand	76 000 F	76 000 F	76 000 F	76 000 F	76 000 F	0.0 %
SUB-TOTAL	2 394 000	2 511 000	2 419 000	2 419 000	2 419 000	0.0 %
ASIA & PACIFIC*	5 622 357	6 435 046	6 576 654	6 427 584	6 517 537	1.6 %
REST OF WORLD	20 487 500	20 166 270	20 084 390	20 137 270	20 187 200	-0.2 %
WORLD	26 109 850	26 601 320	26 661 050	26 564 850	26 704 740	0.2 %

Countries in Asia-Pacific region with largest percent increase of agricultural production indices in the last ten years (1999-2001=100)



PRODUCTION INDICES

Countries in Asia-Pacific region with largest food production indices (1999-2001=100)

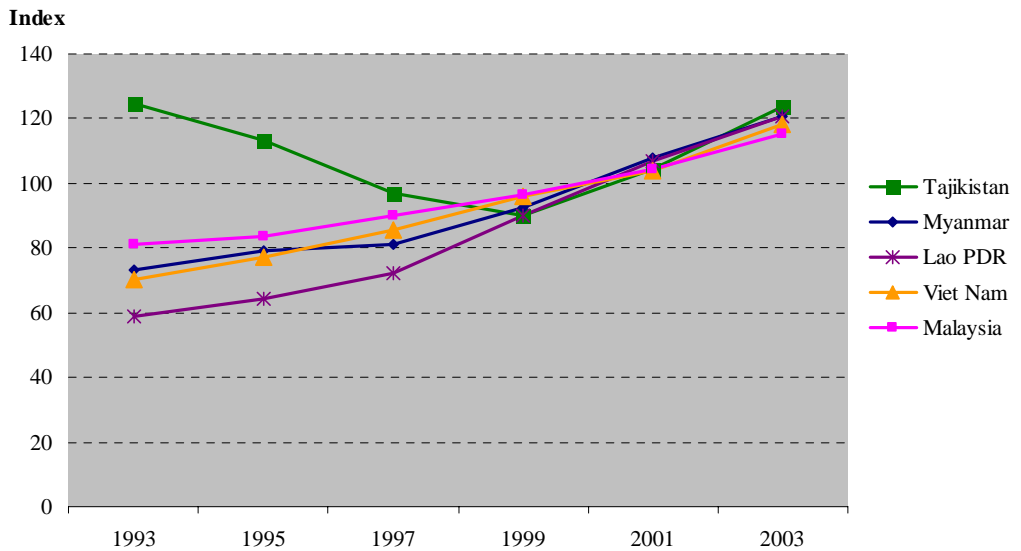


Table 10. Agricultural production indices

(1999-2001 = 100, gross production of agricultural products)*

Country	1993	1995	1997	1999	2001	2003
DEVELOPING COUNTRIES						
SOUTHEAST ASIA						
1 . Cambodia	68.2	83.1	86.1	97.4	103.2	107.3
2 . Indonesia	89.5	99.2	95.2	97.5	101.2	108.5
3 . Lao PDR	59.9	64.2	73.8	88.9	106.1	118.3
4 . Malaysia	85.4	88.0	93.3	97.9	103.6	113.8
5 . Myanmar	73.5	79.1	81.6	92.4	107.9	120.6
6 . Philippines	83.5	86.4	95.7	96.0	104.2	111.8
7 . Thailand	87.2	91.7	95.8	95.5	104.9	106.7
8 . Timor-Leste	-	-	-	-	-	-
9 . Viet Nam	67.6	75.0	83.9	94.9	104.4	117.7
SOUTH ASIA						
10 . Bangladesh	76.2	76.1	82.3	96.4	100.7	104.1
11 . Bhutan	91.5	100.5	105.2	101.7	97.0	83.5
12 . India	81.2	86.4	91.8	99.0	101.7	103.2
13 . Maldives	78.0	80.4	87.2	92.8	103.9	113.3
14 . Nepal	80.4	85.3	89.8	96.3	103.4	106.3
15 . Pakistan	77.8	87.9	91.2	98.9	99.8	103.8
16 . Sri Lanka	90.1	98.2	92.6	99.4	98.8	102.4
CENTRAL ASIA						
17 . Kazakhstan	136.8	90.7	88.3	99.5	107.9	106.8
18 . Tajikistan	135.7	114.2	97.5	89.7	110.5	117.6
19 . Uzbekistan	102.8	103.3	96.3	97.7	101.5	104.0
OTHER ASIA						
20 . Afghanistan	-	-	-	-	-	-
21 . China	70.7	79.1	89.2	96.0	103.7	111.4
22 . DPR Korea	119.1	89.0	81.4	98.0	105.9	107.6
23 . Iran (Islamic Rep. of)	82.8	86.3	90.3	100.9	98.7	110.2
24 . Mongolia	81.5	82.4	88.8	106.5	84.4	99.1
25 . Rep. of Korea	85.3	86.8	95.3	98.9	100.6	93.8
PACIFIC ISLANDS						
26 . Cook Islands	-	-	-	-	-	-
27 . Fiji Islands	99.6	107.7	100.1	102.2	96.2	99.0
28 . Kiribati	83.2	83.9	97.8	103.6	98.9	103.0
29 . Marshall Islands	-	-	-	-	-	-
30 . Micronesia, Fed States of	-	100.0	100.0	100.0	100.0	100.1
31 . Nauru	-	-	-	-	-	-
32 . Niue	-	-	-	-	-	-
33 . Palau	-	-	-	-	-	-
34 . Papua New Guinea	85.2	85.6	91.3	98.2	100.5	103.9
35 . Samoa	84.0	91.1	102.7	97.3	102.0	101.4
36 . Solomon Islands	77.0	85.5	90.9	94.9	103.3	105.5
37 . Tonga	128.2	97.0	100.6	100.8	100.0	103.1
38 . Tuvalu	-	-	-	-	-	-
39 . Vanuatu	103.6	107.6	126.7	109.6	86.3	93.0
DEVELOPED COUNTRIES						
40 . Australia	77.3	79.0	88.4	99.8	102.4	94.5
41 . Japan	102.0	106.3	104.4	100.8	98.6	96.3
42 . New Zealand	84.5	91.5	98.5	94.3	104.7	111.8
ASIA & PACIFIC*	76.8	83.5	90.6	97.2	102.7	107.9
WORLD	83.6	87.6	93.5	98.2	101.5	105.1

* Including all crops and livestock products except fodder crops.

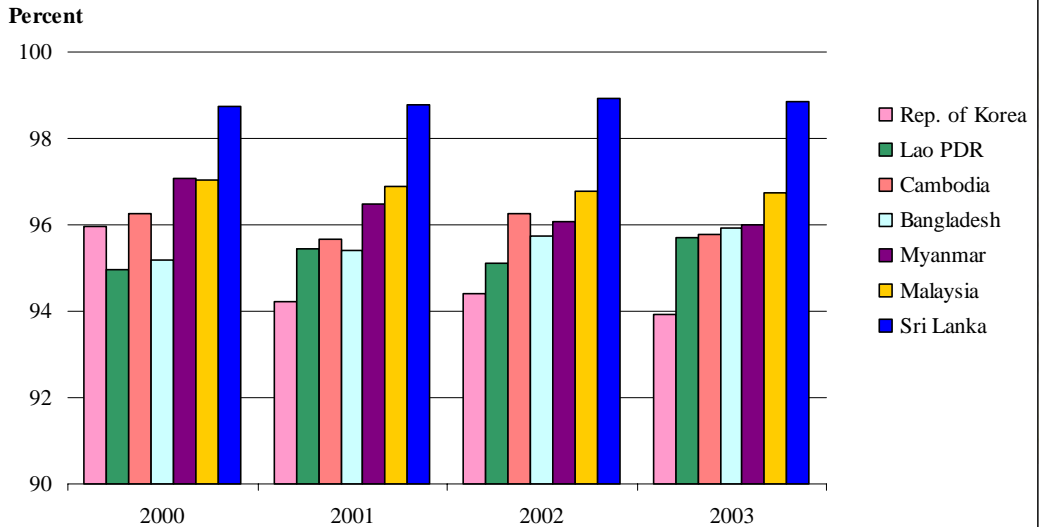
Table 11. Food production indices

(1999-2001 = 100, gross production of food products)*

Country	1993	1995	1997	1999	2001	2003
DEVELOPING COUNTRIES						
SOUTHEAST ASIA						
1 . Cambodia	67.7	82.3	85.2	97.2	103.6	107.5
2 . Indonesia	89.6	99.7	95.5	97.5	101.2	108.3
3 . Lao PDR	58.8	64.5	72.2	90.2	106.8	120.5
4 . Malaysia	80.9	83.5	90.1	96.7	104.6	115.1
5 . Myanmar	73.3	79.3	81.1	92.3	108.0	120.9
6 . Philippines	82.1	85.8	95.3	96.0	104.3	112.1
7 . Thailand	87.2	91.8	95.8	95.6	105.0	106.4
8 . Timor-Leste	-	-	-	-	-	-
9 . Viet Nam	70.3	77.4	85.4	95.8	103.8	118.4
SOUTH ASIA						
10 . Bangladesh	75.0	75.2	80.6	96.6	100.4	104.0
11 . Bhutan	91.4	100.5	105.2	101.7	96.9	83.4
12 . India	80.7	85.7	91.4	98.7	101.8	103.1
13 . Maldives	78.0	80.4	87.2	92.8	103.9	113.3
14 . Nepal	80.3	85.2	89.7	96.3	103.3	106.2
15 . Pakistan	77.9	86.7	92.0	98.2	100.2	105.4
16 . Sri Lanka	90.8	99.8	90.9	99.7	98.7	102.6
CENTRAL ASIA						
17 . Kazakhstan	137.3	90.2	88.6	100.6	107.4	106.0
18 . Tajikistan	124.7	113.2	97.1	89.8	104.5	123.7
19 . Uzbekistan	92.1	95.4	92.0	96.3	102.0	108.3
OTHER ASIA						
20 . Afghanistan	-	-	-	-	-	-
21 . China	69.0	78.0	87.6	96.2	103.4	111.6
22 . DPR Korea	119.5	88.3	80.6	98.0	106.1	107.9
23 . Iran (Islamic Rep. of)	83.2	86.1	90.2	100.9	98.9	110.7
24 . Mongolia	80.5	79.8	88.8	106.8	83.8	99.5
25 . Rep. of Korea	84.0	86.1	95.5	98.8	100.8	94.1
PACIFIC ISLANDS						
26 . Cook Islands	-	-	-	-	-	-
27 . Fiji Islands	99.4	107.9	100.2	102.3	96.1	99.1
28 . Kiribati	83.2	83.9	97.8	103.6	98.9	103.0
29 . Marshall Islands	-	-	-	-	-	-
30 . Micronesia, Fed States of	-	100.0	100.0	100.0	100.0	100.1
31 . Nauru	-	-	-	-	-	-
32 . Niue	-	-	-	-	-	-
33 . Palau	-	-	-	-	-	-
34 . Papua New Guinea	85.2	86.1	91.9	97.7	101.4	104.9
35 . Samoa	83.8	91.0	102.7	97.3	102.0	101.4
36 . Solomon Islands	77.0	85.4	90.8	94.9	103.4	105.5
37 . Tonga	128.2	97.0	100.6	100.8	100.0	103.1
38 . Tuvalu	-	-	-	-	-	-
39 . Vanuatu	103.6	107.6	126.7	109.6	86.3	93.0
DEVELOPED COUNTRIES						
40 . Australia	76.2	78.7	87.2	99.8	103.0	98.8
41 . Japan	101.7	106.2	104.3	100.8	98.6	96.2
42 . New Zealand	83.2	89.9	97.7	93.8	105.3	113.1
ASIA & PACIFIC*	75.9	82.7	89.7	97.2	102.6	108.2
WORLD	83.0	87.1	93.0	98.3	101.4	105.3

* Including all products that are considered edible and contains nutrients

Countries in Asia-Pacific region with largest total rice paddy production as percent of total cereal production



STAPLE FOOD CROPS

A. Cereals

Countries in Asia-Pacific region with largest per capita rice paddy production in 2002

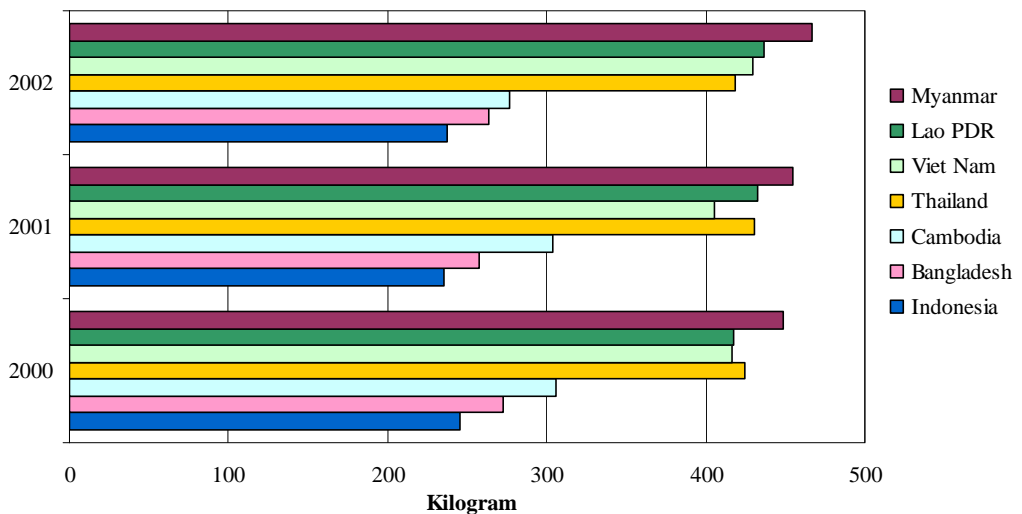


Table 12. Rice paddy : production

Unit: 1000 MT

Country	1993	2000	2001	2002	2003	Annual Growth Rate 1993-2003
DEVELOPING COUNTRIES						
SOUTHEAST ASIA						
1 . Cambodia	2 383.4	4 026.1	4 099.0	3 822.5	4 300.0 *	5.7 %
2 . Indonesia	48 181.1	51 898.0	50 460.8	51 489.7	52 078.8	0.8 %
3 . Lao PDR	1 250.6	2 201.8	2 334.7	2 416.5	2 500.0 *	7.3 %
4 . Malaysia	2 104.4	2 140.8	2 094.0	2 091.0	2 145.1	-0.2 %
5 . Myanmar	16 763.2	21 323.9	21 914.3	22 780.0 *	24 640.0 *	3.7 %
6 . Philippines	9 434.2	12 389.4	12 954.9	13 270.7	14 031.0	3.5 %
7 . Thailand	18 447.0	25 844.0	26 523.0	26 057.0	27 000.0 *	3.4 %
8 . Timor-Leste	51.8	51.0 *	53.8 *	53.7	65.4 *	2.3 %
9 . Viet Nam	22 836.6	32 529.5	32 108.4	34 447.2	34 518.6	4.6 %
SOUTH ASIA						
10 . Bangladesh	26 928.0	37 627.5	36 269.0	37 851.0 *	38 060.0 *	4.8 %
11 . Bhutan	43.0 F	50.0 F	40.0 F	44.3	38.0	-1.2 %
12 . India	120 400.0	127 464.9	140 008.2	107 600.1	132 013.0 *	0.6 %
13 . Maldives	-	-	-	-	-	
14 . Nepal	3 495.6	4 216.5	4 164.7	4 132.6 *	4 155.0 *	2.8 %
15 . Pakistan	5 992.1	7 203.9	5 823.0	6 717.8	6 751.0 *	1.8 %
16 . Sri Lanka	2 570.0	2 859.9	2 695.1	2 859.5	3 071.2	1.8 %
CENTRAL ASIA						
17 . Kazakhstan	403.0	214.3	198.7	199.1	200.0 *	-4.5 %
18 . Tajikistan	22.7	82.0	39.8	50.2	59.4	12.4 %
19 . Uzbekistan	544.6	154.8	67.8	185.6	311.2	-11.6 %
OTHER ASIA						
20 . Afghanistan	-	-	-	-	-	
21 . China	179 746.9	189 814.1	179 304.9	176 342.2	166 417.0 *	-0.6 %
22 . Korea DPR	4 787.0	1 690.0	2 060.2	2 186.0	2 284.0	-3.9 %
23 . Iran (Islamic Rep. of)	2 280.8	1 971.5	1 990.2	2 888.0	3 300.0 *	1.6 %
24 . Mongolia	-	-	-	-	-	
25 . Rep. of Korea	6 507.0	7 196.6	7 406.5	6 687.2	6 068.0 *	0.0 %
PACIFIC ISLANDS						
26 . Cook Islands	-	-	-	-	-	
27 . Fiji Islands	22.28	13.17	14.61	12.85	16.00 *	-3.8 %
28 . Kiribati	-	-	-	-	-	
29 . Marshall Islands	-	-	-	-	-	
30 . Micronesia, Fed States of	-	0.09 F	0.09 F	0.09 F	0.09 F	0.0 %
31 . Nauru	-	-	-	-	-	
32 . Niue	-	-	-	-	-	
33 . Palau	-	-	-	-	-	
34 . Papua New Guinea	0.63 *	0.70 *	0.80 F	0.80 F	0.80 F	2.7 %
35 . Samoa	-	-	-	-	-	
36 . Solomon Islands	0.00 F	4.80 F	5.20 F	5.00 F	5.00 F	22.6 %
37 . Tonga	-	-	-	-	-	
38 . Tuvalu	-	-	-	-	-	
39 . Vanuatu	-	-	-	-	-	
SUB-TOTAL	475 195.8	532 969.1	532 631.7	504 190.5	524 028.7	1.1 %
DEVELOPED COUNTRIES						
40 . Australia	858.0	1 098.0	1 760.0	1 291.0	391.0	-1.0 %
41 . Japan	9 793.0	11 863.0	11 320.0	11 111.0	9 740.0	-1.8 %
42 . New Zealand	-	-	-	-	-	
SUB-TOTAL	10 651.0	12 961.0	13 080.0	12 402.0	10 131.0	-1.6 %
ASIA & PACIFIC*	485 846.8	545 930.0	545 711.7	516 592.5	534 159.7	1.0 %
REST OF WORLD	43 632.3	53 121.3	52 462.0	52 934.1	54 966.1	2.1 %
WORLD	529 479.2	599 051.3	598 173.7	569 526.7	589 125.8	1.1 %

Table 13. Rice paddy : yield

Unit: kg/ha

Country	1993	2000	2001	2002	2003	Annual Growth Rate 1993-2003
DEVELOPING COUNTRIES						
SOUTHEAST ASIA						
1 . Cambodia	1 307	2 115	2 070	1 916	2 150	4.0 %
2 . Indonesia	4 375	4 401	4 388	4 469	4 538	0.3 %
3 . Lao PDR	2 322	3 047	3 126	3 086	3 316	3.3 %
4 . Malaysia	3 035	3 062	3 139	3 090	3 178	0.1 %
5 . Myanmar	3 055	3 383	3 417	3 674	3 705	2.0 %
6 . Philippines	2 874	3 068	3 187	3 280	3 427	1.8 %
7 . Thailand	2 175	2 613	2 619	2 609	2 455	1.3 %
8 . Timor-Leste	2 745	3 000	3 167	3 396	3 272	2.6 %
9 . Viet Nam	3 482	4 243	4 285	4 590	4 634	2.9 %
SOUTH ASIA						
10 . Bangladesh	2 718	3 484	3 402	3 423	3 429	3.5 %
11 . Bhutan	1 654	1 667	2 000	2 332	2 111	3.0 %
12 . India	2 830	2 851	3 138	2 683	3 000	0.6 %
13 . Maldives	-	-	-	-	-	
14 . Nepal	2 410	2 703	2 745	2 675	2 681	1.9 %
15 . Pakistan	2 740	3 031	2 754	3 018	3 055	1.5 %
16 . Sri Lanka	3 135	3 437	3 523	3 489	3 370	1.4 %
CENTRAL ASIA						
17 . Kazakhstan	3 687	2 972	2 871	3 029	2 500	-0.5 %
18 . Tajikistan	1 831	4 115	2 796	4 180	5 215	11.4 %
19 . Uzbekistan	3 014	1 239	1 233	3 099	2 615	-2.8 %
OTHER ASIA						
20 . Afghanistan	-	-	-	-	-	
21 . China	5 846	6 264	6 152	6 186	6 074	0.5 %
22 . Korea DPR	8 127	3 159	3 602	3 750	3 849	-3.7 %
23 . Iran (Islamic Rep. of)	3 876	3 690	3 866	4 727	5 893	2.0 %
24 . Mongolia	-	-	-	-	-	
25 . Rep. of Korea	5 733	6 711	6 838	6 350	5 990	0.5 %
PACIFIC ISLANDS						
26 . Cook Islands	-	-	-	-	-	
27 . Fiji Islands	2 356	2 498	2 435	2 570	2 462	1.0 %
28 . Kiribati	-	-	-	-	-	
29 . Marshall Islands	-	-	-	-	-	
30 . Micronesia, Fed States of	-	1 125	1 125	1 125	1 125	0.0 %
31 . Nauru	-	-	-	-	-	
32 . Niue	-	-	-	-	-	
33 . Palau	-	-	-	-	-	
34 . Papua New Guinea	1 800	2 000	2 000	2 286	2 000	1.7 %
35 . Samoa	-	-	-	-	-	
36 . Solomon Islands	-	4 000	4 000	3 846	3 846	-0.7 %
37 . Tonga	-	-	-	-	-	
38 . Tuvalu	-	-	-	-	-	
39 . Vanuatu	-	-	-	-	-	
AVERAGE	3 707	3 919	3 970	3 896	3 920	0.7 %
DEVELOPED COUNTRIES						
40 . Australia	8 060	8 237	9 462	8 607	10 289	2.0 %
41 . Japan	4 578	6 702	6 635	6 582	5 850	1.2 %
42 . New Zealand	-	-	-	-	-	
AVERAGE	4 743	6 810	6 913	6 748	5 949	1.2 %
ASIA & PACIFIC*	3 725	3 958	4 011	3 936	3 945	0.7 %
REST OF WORLD	2 837	3 278	3 359	3 245	3 032	1.2 %
WORLD	3 631	3 887	3 944	3 860	3 837	0.7 %

Table 14. Rice paddy : area harvested

Unit: 1000 ha

Country	1993	2000	2001	2002	2003	Annual Growth Rate 1993-2003
DEVELOPING COUNTRIES						
SOUTHEAST ASIA						
1 . Cambodia	1 823.6	1 903.2	1 980.3	1 994.6	2 000.0 *	1.7 %
2 . Indonesia	11 012.8	11 793.0	11 500.0	11 521.2	11 477.4	0.6 %
3 . Lao PDR	538.7	722.5	746.8	783.1	754.0 F	3.9 %
4 . Malaysia	693.4	699.1	667.0	676.7	675.0 *	-0.2 %
5 . Myanmar	5 486.8	6 302.5	6 412.5	6 200.0 *	6 650.0 *	1.6 %
6 . Philippines	3 282.4	4 038.1	4 065.4	4 046.3	4 094.0	1.7 %
7 . Thailand	8 482.4	9 891.2	10 125.3	9 988.1	11 000.0 *	2.0 %
8 . Timor-Leste	18.9	17.0 F	17.0 F	15.8	20.0 F	-0.3 %
9 . Viet Nam	6 559.4	7 666.3	7 492.7	7 504.3	7 449.3	1.6 %
SOUTH ASIA						
10 . Bangladesh	9 905.6	10 801.2	10 661.0	11 059.0 *	11 100.0 *	1.3 %
11 . Bhutan	26.0 F	30.0 F	20.0 F	19.0	18.0 F	-4.1 %
12 . India	42 539.0	44 712.0	44 622.0	40 101.7	44 000.0 *	0.0 %
13 . Maldives	-	-	-	-	-	-
14 . Nepal	1 450.5	1 560.0	1 517.0	1 545.0 *	1 550.0 F	0.9 %
15 . Pakistan	2 187.1	2 376.6	2 114.2	2 226.0	2 210.0 *	0.3 %
16 . Sri Lanka	819.8	832.0	765.0	819.6	911.4	0.4 %
CENTRAL ASIA						
17 . Kazakhstan	109.3	72.1	69.2	65.7	80.0 F	-4.0 %
18 . Tajikistan	12.4	19.9	14.2	12.0	11.4	0.9 %
19 . Uzbekistan	180.7	124.9	55.0	59.9	119.0	-9.1 %
OTHER ASIA						
20 . Afghanistan	-	-	-	-	-	-
21 . China	30 745.9	30 301.5	29 144.0	28 508.8	27 398.0 *	-1.1 %
22 . Korea DPR	589.0	535.0	572.0	582.9	593.4	-0.2 %
23 . Iran (Islamic Rep. of)	588.5	534.3	514.8	611.0	560.0 F	-0.4 %
24 . Mongolia	-	-	-	-	-	-
25 . Rep. of Korea	1 135.0	1 072.4	1 083.1	1 053.2	1 013.0 *	-0.6 %
PACIFIC ISLANDS						
26 . Cook Islands	-	-	-	-	-	-
27 . Fiji Islands	9.46	5.27	6.00 F	5.00 F	6.50 F	-4.7 %
28 . Kiribati	-	-	-	-	-	-
29 . Marshall Islands	-	-	-	-	-	-
30 . Micronesia, Fed States of	-	0.08 F	0.08 F	0.08 F	0.08 F	0.0 %
31 . Nauru	-	-	-	-	-	-
32 . Niue	-	-	-	-	-	-
33 . Palau	-	-	-	-	-	-
34 . Papua New Guinea	0.35 F	0.35 F	0.40 F	0.35 F	0.40 F	1.0 %
35 . Samoa	-	-	-	-	-	-
36 . Solomon Islands	0.00 F	1.20 F	1.30 F	1.30 F	1.30 F	23.4 %
37 . Tonga	-	-	-	-	-	-
38 . Tuvalu	-	-	-	-	-	-
39 . Vanuatu	-	-	-	-	-	-
SUB-TOTAL	128 196.9	136 011.7	134 166.4	129 400.6	133 692.2	0.3 %
DEVELOPED COUNTRIES						
40 . Australia	106.5	133.3	186.0	150.0	38.0	-2.9 %
41 . Japan	2 139.0	1 770.0	1 706.0	1 688.0	1 665.0	-3.0 %
42 . New Zealand	-	-	-	-	-	-
SUB-TOTAL	2 245.5	1 903.3	1 892.0	1 838.0	1 703.0	-2.8 %
ASIA & PACIFIC*	130 442.4	137 915.0	136 058.4	131 238.6	135 395.2	0.3 %
REST OF WORLD	15 381.9	16 207.9	15 620.2	16 312.9	18 127.2	1.0 %
WORLD	145 824.2	154 122.9	151 678.6	147 551.5	153 522.3	0.4 %

Table 15. Wheat : production

Unit: 1000 MT

Country	1993	2000	2001	2002	2003	Annual Growth Rate 1993-2003
DEVELOPING COUNTRIES						
SOUTHEAST ASIA						
1 . Cambodia	-	-	-	-	-	
2 . Indonesia	-	-	-	-	-	
3 . Lao PDR	-	-	-	-	-	
4 . Malaysia	-	-	-	-	-	
5 . Myanmar	138.5	93.6	95.9	100.0 *	100.0 *	-1.0 %
6 . Philippines	-	-	-	-	-	
7 . Thailand	0.7 *	0.8 *	0.8 *	0.8 *	0.8 F	1.7 %
8 . Timor-Leste	-	-	-	-	-	
9 . Viet Nam	-	-	-	-	-	
SOUTH ASIA						
10 . Bangladesh	1 175.6	1 840.0	1 673.0	1 606.0	1 550.0 *	4.2 %
11 . Bhutan	7.0 F	20.0 *	20.0 *	4.4	4.6	-3.4 %
12 . India	57 210.1	76 368.9	69 680.9	72 766.3	65 129.3	1.9 %
13 . Maldives	-	-	-	-	-	
14 . Nepal	765.0	1 183.5	1 157.9	1 258.0	1 344.0 *	4.8 %
15 . Pakistan	16 156.5	21 078.6	19 023.7	18 227.0	19 210.2	2.2 %
16 . Sri Lanka	-	-	-	-	-	
CENTRAL ASIA						
17 . Kazakhstan	11 585.0	9 073.5	12 706.8	12 700.0	11 518.5	3.6 %
18 . Tajikistan	159.0	406.2	387.3	544.6	660.2	13.3 %
19 . Uzbekistan	876.0	3 521.7	3 786.0	4 924.0 *	5 331.0 *	15.9 %
OTHER ASIA						
20 . Afghanistan	-	-	-	-	-	
21 . China	106 394.9	99 636.1	93 873.2	90 290.3	86 100.3	-1.8 %
22 . Korea DPR	123.0 *	50.0 *	123.9	130.0	145.0	-0.4 %
23 . Iran (Islamic Rep. of)	10 732.3	8 087.8	9 458.6	12 450.0	12 900.0 *	0.3 %
24 . Mongolia	450.2	138.7	138.7	149.3	180.0 F	-9.3 %
25 . Rep. of Korea	1.5	2.3	2.8	5.8	10.0 *	5.9 %
PACIFIC ISLANDS						
26 . Cook Islands	-	-	-	-	-	
27 . Fiji Islands	-	-	-	-	-	
28 . Kiribati	-	-	-	-	-	
29 . Marshall Islands	-	-	-	-	-	
30 . Micronesia, Fed States of	-	-	-	-	-	
31 . Nauru	-	-	-	-	-	
32 . Niue	-	-	-	-	-	
33 . Palau	-	-	-	-	-	
34 . Papua New Guinea	-	-	-	-	-	
35 . Samoa	-	-	-	-	-	
36 . Solomon Islands	-	-	-	-	-	
37 . Tonga	-	-	-	-	-	
38 . Tuvalu	-	-	-	-	-	
39 . Vanuatu	-	-	-	-	-	
SUB-TOTAL	205 775.5	221 501.7	212 129.5	215 156.5	204 183.9	0.4 %
DEVELOPED COUNTRIES						
40 . Australia	16 479.0	22 108.0	24 854.0	10 059.0	24 900.0	3.6 %
41 . Japan	637.8	688.2	699.9	827.8	855.2	4.8 %
42 . New Zealand	219.4	326.0	364.0	301.5	320.5	4.0 %
SUB-TOTAL	17 336.2	23 122.2	25 917.9	11 188.3	26 075.7	3.7 %
ASIA & PACIFIC*	223 111.7	244 624.0	238 047.4	226 344.8	230 259.6	0.7 %
REST OF WORLD	341 378.0	341 342.0	352 472.5	347 168.5	326 089.0	0.3 %
WORLD	564 489.7	585 966.0	590 519.9	573 513.3	556 348.6	0.4 %

Table 16. Wheat : yield

Unit: kg/ha

Country	1993	2000	2001	2002	2003	Annual Growth Rate 1993-2003
DEVELOPING COUNTRIES						
SOUTHEAST ASIA						
1 . Cambodia	-	-	-	-	-	
2 . Indonesia	-	-	-	-	-	
3 . Lao PDR	-	-	-	-	-	
4 . Malaysia	-	-	-	-	-	
5 . Myanmar	953	1 167	1 210	1 111	1 111	3.1 %
6 . Philippines	-	-	-	-	-	
7 . Thailand	617	667	667	615	615	-0.4 %
8 . Timor-Leste	-	-	-	-	-	
9 . Viet Nam	-	-	-	-	-	
SOUTH ASIA						
10 . Bangladesh	1 846	2 210	2 164	2 164	1 992	1.5 %
11 . Bhutan	1 167	1 538	1 538	946	1 136	-0.5 %
12 . India	2 327	2 778	2 708	2 762	2 617	1.4 %
13 . Maldives	-	-	-	-	-	
14 . Nepal	1 246	1 793	1 806	1 886	1 976	4.0 %
15 . Pakistan	1 947	2 491	2 325	2 262	2 381	2.3 %
16 . Sri Lanka	-	-	-	-	-	
CENTRAL ASIA						
17 . Kazakhstan	918	903	1 180	1 090	1 023	4.8 %
18 . Tajikistan	800	1 184	1 187	1 790	1 972	6.4 %
19 . Uzbekistan	1 256	2 642	3 000	4 385	3 537	11.1 %
OTHER ASIA						
20 . Afghanistan	-	-	-	-	-	
21 . China	3 519	3 738	3 806	3 777	3 907	1.0 %
22 . Korea DPR	1 367	847	2 163	2 063	2 500	5.1 %
23 . Iran (Islamic Rep. of)	1 493	1 586	1 703	1 995	1 985	2.2 %
24 . Mongolia	904	777	749	684	818	-0.7 %
25 . Rep. of Korea	2 711	2 545	3 105	3 227	3 048	-1.8 %
PACIFIC ISLANDS						
26 . Cook Islands	-	-	-	-	-	
27 . Fiji Islands	-	-	-	-	-	
28 . Kiribati	-	-	-	-	-	
29 . Marshall Islands	-	-	-	-	-	
30 . Micronesia, Fed States of	-	-	-	-	-	
31 . Nauru	-	-	-	-	-	
32 . Niue	-	-	-	-	-	
33 . Palau	-	-	-	-	-	
34 . Papua New Guinea	-	-	-	-	-	
35 . Samoa	-	-	-	-	-	
36 . Solomon Islands	-	-	-	-	-	
37 . Tonga	-	-	-	-	-	
38 . Tuvalu	-	-	-	-	-	
39 . Vanuatu	-	-	-	-	-	
AVERAGE	2 398	2 726	2 711	2 709	2 671	1.4 %
DEVELOPED COUNTRIES						
40 . Australia	1 966	1 821	2 143	911	1 999	-0.5 %
41 . Japan	3 474	3 761	3 555	4 001	4 030	1.8 %
42 . New Zealand	5 626	6 210	7 429	7 152	7 419	3.4 %
AVERAGE	2 015	1 868	2 188	991	2 051	-0.4 %
ASIA & PACIFIC*	2 363	2 613	2 643	2 495	2 583	1.1 %
REST OF WORLD	2 656	2 800	2 829	2 823	2 726	0.8 %
WORLD	2 532	2 719	2 751	2 684	2 665	0.9 %

Table 17. Wheat : area harvested

Unit: 1000 ha

Country	1993	2000	2001	2002	2003	Annual Growth Rate 1993-2003
DEVELOPING COUNTRIES						
SOUTHEAST ASIA						
1 . Cambodia	-	-	-	-	-	
2 . Indonesia	-	-	-	-	-	
3 . Lao PDR	-	-	-	-	-	
4 . Malaysia	-	-	-	-	-	
5 . Myanmar	145.4	80.2	79.3	90.0 *	90.0 *	-3.9 %
6 . Philippines	-	-	-	-	-	
7 . Thailand	1.2 F	1.2 F	1.2 F	1.3 F	1.3 F	2.1 %
8 . Timor-Leste	-	-	-	-	-	
9 . Viet Nam	-	-	-	-	-	
SOUTH ASIA						
10 . Bangladesh	636.9	832.4	773.0	742.0	778.0 *	2.7 %
11 . Bhutan	6.0 F	13.0 *	13.0 *	4.6	4.0	-2.9 %
12 . India	24 588.9	27 486.0	25 730.6	26 344.7	24 886.2	0.5 %
13 . Maldives	-	-	-	-	-	
14 . Nepal	614.0	660.0	641.0	667.1	680.0 F	0.8 %
15 . Pakistan	8 299.7	8 463.0	8 180.8	8 057.5	8 069.0	-0.1 %
16 . Sri Lanka	-	-	-	-	-	
CENTRAL ASIA						
17 . Kazakhstan	12 622.0	10 050.1	10 766.1	11 656.5	11 262.3	-1.2 %
18 . Tajikistan	198.8	343.1	326.4	304.3	334.9	6.4 %
19 . Uzbekistan	697.4	1 333.1	1 262.0	1 123.0 *	1 507.0	4.4 %
OTHER ASIA						
20 . Afghanistan	-	-	-	-	-	
21 . China	30 236.4	26 653.3	24 664.1	23 908.1	22 040.1 *	-2.8 %
22 . Korea DPR	90.0 F	59.0 *	57.3	63.0	58.0	-5.2 %
23 . Iran (Islamic Rep. of)	7 190.1	5 100.7	5 553.1	6 241.0	6 500.0 *	-1.9 %
24 . Mongolia	498.1	178.6	185.1	218.2	220.0 F	-8.7 %
25 . Rep. of Korea	.5	.9	.9	1.8	3.3 *	7.9 %
PACIFIC ISLANDS						
26 . Cook Islands	-	-	-	-	-	
27 . Fiji Islands	-	-	-	-	-	
28 . Kiribati	-	-	-	-	-	
29 . Marshall Islands	-	-	-	-	-	
30 . Micronesia, Fed States of	-	-	-	-	-	
31 . Nauru	-	-	-	-	-	
32 . Niue	-	-	-	-	-	
33 . Palau	-	-	-	-	-	
34 . Papua New Guinea	-	-	-	-	-	
35 . Samoa	-	-	-	-	-	
36 . Solomon Islands	-	-	-	-	-	
37 . Tonga	-	-	-	-	-	
38 . Tuvalu	-	-	-	-	-	
39 . Vanuatu	-	-	-	-	-	
SUB-TOTAL	85 825.4	81 254.7	78 233.8	79 423.1	76 434.1	-1.0 %
DEVELOPED COUNTRIES						
40 . Australia	8 383.0	12 141.0	11 597.0	11 045.0	12 456.0	4.1 %
41 . Japan	183.6	183.0	196.9	206.9	212.2	2.9 %
42 . New Zealand	39.0 F	52.5	49.0	42.2	43.2	0.5 %
SUB-TOTAL	8 605.6	12 376.5	11 842.9	11 294.1	12 711.4	4.0 %
ASIA & PACIFIC*	94 431.0	93 631.2	90 076.7	90 717.1	89 145.5	-0.5 %
REST OF WORLD	128 522.5	121 887.4	124 612.8	122 999.2	119 619.5	-0.5 %
WORLD	222 953.5	215 518.7	214 689.5	213 716.4	208 765.0	-0.5 %

Table 18. Maize : production

Unit: 1000 MT

Country	1993	2000	2001	2002	2003	Annual Growth Rate 1993-2003
DEVELOPING COUNTRIES						
SOUTHEAST ASIA						
1 . Cambodia	45.4	157.0	185.6	148.9	190.0 *	18.0 %
2 . Indonesia	6 459.7	9 677.0	9 347.2	9 654.1	10 910.1	4.2 %
3 . Lao PDR	47.6	117.0	111.9	124.1	112.0 *	10.6 %
4 . Malaysia	38.0 *	65.0 *	67.0 *	70.0 *	72.0 *	7.2 %
5 . Myanmar	204.6	362.7	532.4	660.0 *	750.0 *	12.0 %
6 . Philippines	4 798.0	4 511.1	4 525.0	4 319.3	4 478.2	0.2 %
7 . Thailand	3 328.0	4 462.0	4 466.0	4 230.0	4 500.0 *	1.9 %
8 . Timor-Leste	104.5	88.4 *	69.0 *	93.7	70.2 *	-3.8 %
9 . Viet Nam	882.2	2 005.9	2 161.7	2 511.2	2 933.7	11.1 %
SOUTH ASIA						
10 . Bangladesh	2.7	10.0	10.0 F	10.0 F	10.0 F	19.3 %
11 . Bhutan	50.0 F	70.0 *	60.0 F	48.5	42.0 *	-2.4 %
12 . India	9 601.0	12 043.2	13 160.2	11 166.9	14 800.0 *	4.0 %
13 . Maldives	.0 *	.0 F	.0 F	.0 F	.0 F	-29.3 %
14 . Nepal	1 210.0	1 414.9	1 484.1	1 510.8	1 441.0 *	2.1 %
15 . Pakistan	1 213.0	1 643.2	1 664.4	1 737.1	1 275.0 *	1.8 %
16 . Sri Lanka	31.7	31.1	28.8	26.4	29.9	-1.4 %
CENTRAL ASIA						
17 . Kazakhstan	355.0	248.8	320.4	435.2	438.0 *	7.6 %
18 . Tajikistan	33.5	37.8	34.3	55.4	94.9	9.4 %
19 . Uzbekistan	403.6	131.4	100.0 *	140.0 *	136.0 *	-8.6 %
OTHER ASIA						
20 . Afghanistan	-	-	-	-	-	-
21 . China	103 110.0	106 178.3	114 254.0	121 498.9	114 175.0	1.1 %
22 . Korea DPR	3 937.0	1 041.0	1 483.0	1 651.0	1 725.0	-5.6 %
23 . Iran (Islamic Rep. of)	210.0	1 119.7	1 064.2	1 450.0 F	1 800.0 F	18.1 %
24 . Mongolia	-	-	-	-	-	-
25 . Rep. of Korea	82.1	64.2	57.0	73.2	70.0 *	-2.4 %
PACIFIC ISLANDS						
26 . Cook Islands	-	-	-	-	-	-
27 . Fiji Islands	0.52	0.98	1.00 F	1.10 F	1.30 F	-0.9 %
28 . Kiribati	-	-	-	-	-	-
29 . Marshall Islands	-	-	-	-	-	-
30 . Micronesia, Fed States of	-	0.05 F	0.05 F	0.05 F	0.05 F	0.0 %
31 . Nauru	-	-	-	-	-	-
32 . Niue	-	-	-	-	-	-
33 . Palau	-	-	-	-	-	-
34 . Papua New Guinea	4.00 F	7.20 F	8.30 F	8.50 F	6.00 *	6.3 %
35 . Samoa	-	-	-	-	-	-
36 . Solomon Islands	-	-	-	-	-	-
37 . Tonga	-	-	-	-	-	-
38 . Tuvalu	-	-	-	-	-	-
39 . Vanuatu	0.67 F	0.70 F	0.70 F	0.70 F	0.70 F	0.2 %
SUB-TOTAL	136 152.9	145 488.5	155 196.2	161 625.1	160 060.9	1.6 %
DEVELOPED COUNTRIES						
40 . Australia	198.8	406.0	345.0	457.0	316.0	6.5 %
41 . Japan	.5 F	.2 F	.2 F	.2 F	.2 F	-10.6 %
42 . New Zealand	133.1	181.0	176.8	148.8	158.0	0.9 %
SUB-TOTAL	332.4	587.2	522.0	606.0	474.2	4.5 %
ASIA & PACIFIC*	136 485.2	146 075.8	155 718.1	162 231.1	160 535.1	1.6 %
REST OF WORLD	340 226.4	446 667.8	459 379.5	441 931.3	477 508.4	2.3 %
WORLD	476 711.6	592 743.6	615 097.7	604 162.4	638 043.5	2.1 %

Table 19. Maize : yield

Unit: kg/ha

Country	1993	2000	2001	2002	2003	Annual Growth Rate 1993-2003
DEVELOPING COUNTRIES						
SOUTHEAST ASIA						
1 . Cambodia	1 058	2 735	2 761	2 080	2 111	9.2 %
2 . Indonesia	2 198	2 765	2 845	3 088	3 252	3.9 %
3 . Lao PDR	1 754	2 388	2 550	2 761	2 333	4.1 %
4 . Malaysia	1 900	2 407	3 045	3 043	3 000	5.7 %
5 . Myanmar	1 534	1 724	2 124	2 136	2 500	3.6 %
6 . Philippines	1 524	1 797	1 820	1 803	1 802	2.2 %
7 . Thailand	2 733	3 672	3 735	3 729	3 913	3.1 %
8 . Timor-Leste	1 800	1 608	1 216	1 755	1 392	-2.5 %
9 . Viet Nam	1 777	2 747	2 963	3 076	3 225	5.3 %
SOUTH ASIA						
10 . Bangladesh	935	2 060	2 000	2 000	2 000	10.7 %
11 . Bhutan	1 111	1 556	1 579	1 565	1 591	2.1 %
12 . India	1 602	1 822	2 000	1 676	2 114	2.6 %
13 . Maldives	1 000	-	-	-	-	-
14 . Nepal	1 598	1 728	1 800	1 829	1 729	1.3 %
15 . Pakistan	1 381	1 741	1 768	1 791	1 457	1.4 %
16 . Sri Lanka	971	1 084	1 118	1 128	1 098	1.5 %
CENTRAL ASIA						
17 . Kazakhstan	3 266	3 335	3 713	4 135	4 380	7.3 %
18 . Tajikistan	3 045	3 163	3 809	5 836	11 400	12.4 %
19 . Uzbekistan	3 844	2 556	4 149	6 512	4 000	2.5 %
OTHER ASIA						
20 . Afghanistan	-	-	-	-	-	-
21 . China	4 964	4 599	4 700	4 927	4 854	-0.2 %
22 . Korea DPR	6 269	2 099	2 988	3 326	3 485	-2.5 %
23 . Iran (Islamic Rep. of)	3 908	6 166	6 161	7 250	8 571	4.9 %
24 . Mongolia	-	-	-	-	-	-
25 . Rep. of Korea	4 184	4 062	4 012	4 222	4 118	-0.1 %
PACIFIC ISLANDS						
26 . Cook Islands	-	-	-	-	-	-
27 . Fiji Islands	922	2 448	2 222	2 444	2 549	3.8 %
28 . Kiribati	-	-	-	-	-	-
29 . Marshall Islands	-	-	-	-	-	-
30 . Micronesia, Fed States of	-	1 200	1 200	1 200	1 200	0.0 %
31 . Nauru	-	-	-	-	-	-
32 . Niue	-	-	-	-	-	-
33 . Palau	-	-	-	-	-	-
34 . Papua New Guinea	3 077	5 538	5 533	5 667	4 615	5.5 %
35 . Samoa	-	-	-	-	-	-
36 . Solomon Islands	-	-	-	-	-	-
37 . Tonga	-	-	-	-	-	-
38 . Tuvalu	-	-	-	-	-	-
39 . Vanuatu	515	538	538	538	538	0.2 %
AVERAGE	3 631	3 572	3 724	3 848	3 851	0.7 %
DEVELOPED COUNTRIES						
40 . Australia	4 426	4 936	4 662	5 506	5 267	0.9 %
41 . Japan	2 500	2 466	2 500	2 462	2 462	-0.1 %
42 . New Zealand	8 358	10 226	10 400	10 498	10 535	1.4 %
AVERAGE	5 446	5 870	5 732	6 232	6 317	0.3 %
ASIA & PACIFIC*	3 634	3 578	3 729	3 853	3 855	0.7 %
REST OF WORLD	3 619	4 586	4 723	4 595	4 726	2.1 %
WORLD	3 623	4 288	4 424	4 369	4 472	1.7 %

Table 20. Maize : area harvested

Unit: 1000 ha

Country	1993	2000	2001	2002	2003	Annual Growth Rate 1993-2003
DEVELOPING COUNTRIES						
SOUTHEAST ASIA						
1 . Cambodia	42.9	57.4	67.2	71.6	90.0 F	8.0 %
2 . Indonesia	2 939.5	3 500.0	3 285.9	3 126.8	3 354.7	0.2 %
3 . Lao PDR	27.2	49.0	43.9	45.0	48.0 F	6.2 %
4 . Malaysia	20.0 *	27.0 *	22.0 *	23.0 *	24.0 *	1.4 %
5 . Myanmar	133.4	210.4	250.7	309.0 *	300.0 *	8.1 %
6 . Philippines	3 149.2	2 510.3	2 486.6	2 395.5	2 485.0 *	-1.9 %
7 . Thailand	1 217.7	1 215.0	1 195.8	1 134.4	1 150.0 *	-1.2 %
8 . Timor-Leste	58.1	55.0 F	56.8	53.4	50.4 *	-1.4 %
9 . Viet Nam	496.5	730.2	729.5	816.4	909.8	5.5 %
SOUTH ASIA						
10 . Bangladesh	2.9	4.9	5.0 F	5.0 F	5.0 F	7.8 %
11 . Bhutan	45.0 F	45.0 *	38.0 F	31.0	26.4	-4.4 %
12 . India	5 995.0	6 611.3	6 581.5	6 662.3	7 000.0 *	1.4 %
13 . Maldives	.0 F	.0 F	.0 F	.0 F	.0 F	-29.3 %
14 . Nepal	757.0	819.0	824.5	826.0	833.3 *	0.9 %
15 . Pakistan	878.5	944.0	941.6	970.0	875.0 *	0.4 %
16 . Sri Lanka	32.6	28.6	25.7	23.4	27.2	-2.8 %
CENTRAL ASIA						
17 . Kazakhstan	108.7	74.6	86.3	105.2	100.0 F	0.3 %
18 . Tajikistan	11.0	11.9	9.0	9.5	8.3	-2.7 %
19 . Uzbekistan	105.0	51.4	24.1 *	21.5 *	34.0	-10.9 %
OTHER ASIA						
20 . Afghanistan	-	-	-	-	-	
21 . China	20 770.8	23 086.4	24 310.7	24 661.0	23 520.0 *	1.3 %
22 . Korea DPR	628.0	496.0	496.3	496.4	495.0	-3.1 %
23 . Iran (Islamic Rep. of)	53.7	181.6	172.7	200.0 F	210.0 F	12.6 %
24 . Mongolia	-	-	-	-	-	
25 . Rep. of Korea	19.6	15.8	14.2	17.3	17.0 *	-2.3 %
PACIFIC ISLANDS						
26 . Cook Islands	-	-	-	-	-	
27 . Fiji Islands	0.57	0.40 F	0.45 F	0.45 F	0.51 F	-4.5 %
28 . Kiribati	-	-	-	-	-	
29 . Marshall Islands	-	-	-	-	-	
30 . Micronesia, Fed States of	-	0.04 F	0.04 F	0.04 F	0.04 F	0.0 %
31 . Nauru	-	-	-	-	-	
32 . Niue	-	-	-	-	-	
33 . Palau	-	-	-	-	-	
34 . Papua New Guinea	1.30 F	1.30 F	1.50 F	1.50 F	1.30 F	0.7 %
35 . Samoa	-	-	-	-	-	
36 . Solomon Islands	-	-	-	-	-	
37 . Tonga	-	-	-	-	-	
38 . Tuvalu	-	-	-	-	-	
39 . Vanuatu	1.30 F	1.30 F	1.30 F	1.30 F	1.30 F	0.0 %
SUB-TOTAL	37 495.5	40 728.0	41 671.3	42 006.9	41 566.3	0.9 %
DEVELOPED COUNTRIES						
40 . Australia	44.9	82.3	74.0	83.0	60.0	5.5 %
41 . Japan	.2	.1	.1	.1 F	.1 F	-10.5 %
42 . New Zealand	15.9	17.7	17.0	14.2	15.0	-0.4 %
SUB-TOTAL	61.0	100.0	91.1	97.2	75.1	4.2 %
ASIA & PACIFIC*	37 556.6	40 828.0	41 762.3	42 104.2	41 641.3	0.9 %
REST OF WORLD	94 011.4	97 404.4	97 271.1	96 167.2	101 044.0	0.2 %
WORLD	131 568.0	138 232.4	139 033.5	138 271.4	142 685.3	0.4 %

Table 21. Millet : production

Unit: 1000 MT

Country	1993	2000	2001	2002	2003	Annual Growth Rate 1993-2003
DEVELOPING COUNTRIES						
SOUTHEAST ASIA						
1 . Cambodia	-	-	-	-	-	
2 . Indonesia	-	-	-	-	-	
3 . Lao PDR	-	-	-	-	-	
4 . Malaysia	-	-	-	-	-	
5 . Myanmar	144.2	168.9	158.5	160.0 *	162.0 *	2.0 %
6 . Philippines	-	-	-	-	-	
7 . Thailand	-	-	-	-	-	
8 . Timor-Leste	-	-	-	-	-	
9 . Viet Nam	-	-	-	-	-	
SOUTH ASIA						
10 . Bangladesh	63.0	55.0	57.0 F	57.0 F	57.0 F	-0.6 %
11 . Bhutan	7.0 F	7.0 F	4.5 F	3.8	3.0	-7.0 %
12 . India	8 488.4	10 077.8	11 235.3	6 508.9	10 700.0 *	-0.2 %
13 . Maldives	.0 *	.0	.0 F	.0 F	.0 F	-2.3 %
14 . Nepal	274.4	269.9	282.9	282.6	288.0 *	0.7 %
15 . Pakistan	137.5	199.0	216.4	189.0	180.0 *	1.6 %
16 . Sri Lanka	7.6	5.0	4.3	4.1	5.4	-3.3 %
CENTRAL ASIA						
17 . Kazakhstan	233.0	62.3	65.3	39.2	40.0 *	-9.5 %
18 . Tajikistan	-	-	-	-	-	
19 . Uzbekistan	.3	2.7 *	1.6 *	1.0 *	.5 *	2.9 %
OTHER ASIA						
20 . Afghanistan	-	-	-	-	-	
21 . China	3 999.7	2 125.7	1 966.8	2 176.8	1 950.8 *	-7.0 %
22 . Korea DPR	40.0 F	45.0 F	50.0 *	65.0 *	38.0 *	10.3 %
23 . Iran (Islamic Rep. of)	6.0 F	9.0 F	9.0 F	8.0 F	10.0 F	4.1 %
24 . Mongolia	-	-	-	-	-	
25 . Rep. of Korea	2.2	1.8	1.9	1.8	2.0 F	0.1 %
PACIFIC ISLANDS						
26 . Cook Islands	-	-	-	-	-	
27 . Fiji Islands	-	-	-	-	-	
28 . Kiribati	-	-	-	-	-	
29 . Marshall Islands	-	-	-	-	-	
30 . Micronesia, Fed States of	-	-	-	-	-	
31 . Nauru	-	-	-	-	-	
32 . Niue	-	-	-	-	-	
33 . Palau	-	-	-	-	-	
34 . Papua New Guinea	-	-	-	-	-	
35 . Samoa	-	-	-	-	-	
36 . Solomon Islands	-	-	-	-	-	
37 . Tonga	-	-	-	-	-	
38 . Tuvalu	-	-	-	-	-	
39 . Vanuatu	-	-	-	-	-	
SUB-TOTAL	13 403.2	13 029.1	14 053.4	9 497.2	13 436.7	-1.7 %
DEVELOPED COUNTRIES						
40 . Australia	14.2	56.8 F	55.0	55.0 F	54.0 F	10.1 %
41 . Japan	.7 F	.3	.3 F	.3 F	.3 F	-10.2 %
42 . New Zealand	-	-	-	-	-	
SUB-TOTAL	14.9	57.1	55.3	55.3	54.3	9.8 %
ASIA & PACIFIC*	13 418.2	13 086.2	14 108.7	9 552.5	13 491.0	-1.6 %
REST OF WORLD	12 613.8	14 668.3	14 915.4	14 589.8	16 314.9	2.1 %
WORLD	26 031.9	27 754.4	29 024.1	24 142.3	29 805.9	0.3 %

Table 22. Millet : yield

Unit: kg/ha

Country	1993	2000	2001	2002	2003	Annual Growth Rate 1993-2003
DEVELOPING COUNTRIES						
SOUTHEAST ASIA						
1 . Cambodia	-	-	-	-	-	
2 . Indonesia	-	-	-	-	-	
3 . Lao PDR	-	-	-	-	-	
4 . Malaysia	-	-	-	-	-	
5 . Myanmar	703	676	690	696	698	0.6 %
6 . Philippines	-	-	-	-	-	
7 . Thailand	-	-	-	-	-	
8 . Timor-Leste	-	-	-	-	-	
9 . Viet Nam	-	-	-	-	-	
SOUTH ASIA						
10 . Bangladesh	752	751	713	713	713	0.1 %
11 . Bhutan	875	875	643	613	768	-2.7 %
12 . India	637	774	900	641	892	1.6 %
13 . Maldives	1 000	800	1 000	1 000	1 000	-4.0 %
14 . Nepal	1 079	1 025	1 088	1 095	1 108	0.4 %
15 . Pakistan	454	511	519	604	450	2.0 %
16 . Sri Lanka	734	737	742	743	715	0.8 %
CENTRAL ASIA						
17 . Kazakhstan	526	478	629	735	750	6.2 %
18 . Tajikistan	-	-	-	-	-	
19 . Uzbekistan	375	2 700	3 200	2 222	1 250	7.1 %
OTHER ASIA						
20 . Afghanistan	-	-	-	-	-	
21 . China	2 183	1 700	1 712	1 909	1 822	-2.3 %
22 . Korea DPR	1 000	1 000	1 111	1 182	927	1.6 %
23 . Iran (Islamic Rep. of)	1 200	818	818	800	1 000	-4.3 %
24 . Mongolia	-	-	-	-	-	
25 . Rep. of Korea	1 190	1 232	1 452	1 030	1 174	-0.3 %
PACIFIC ISLANDS						
26 . Cook Islands	-	-	-	-	-	
27 . Fiji Islands	-	-	-	-	-	
28 . Kiribati	-	-	-	-	-	
29 . Marshall Islands	-	-	-	-	-	
30 . Micronesia, Fed States of	-	-	-	-	-	
31 . Nauru	-	-	-	-	-	
32 . Niue	-	-	-	-	-	
33 . Palau	-	-	-	-	-	
34 . Papua New Guinea	-	-	-	-	-	
35 . Samoa	-	-	-	-	-	
36 . Solomon Islands	-	-	-	-	-	
37 . Tonga	-	-	-	-	-	
38 . Tuvalu	-	-	-	-	-	
39 . Vanuatu	-	-	-	-	-	
AVERAGE	812	844	950	772	949	0.4 %
DEVELOPED COUNTRIES						
40 . Australia	653	1 457	1 528	1 528	1 543	7.1 %
41 . Japan	1 750	1 000	1 000	1 000	1 000	-6.9 %
42 . New Zealand	-	-	-	-	-	
AVERAGE	673	1 454	1 523	1 523	1 538	6.9 %
ASIA & PACIFIC*	812	845	951	774	950	0.4 %
REST OF WORLD	657	677	684	674	738	1.1 %
WORLD	729	747	792	711	821	0.6 %

Table 23. Millet : area harvested

Unit: 1000 ha

Country	1993	2000	2001	2002	2003	Annual Growth Rate 1993-2003
DEVELOPING COUNTRIES						
SOUTHEAST ASIA						
1 . Cambodia	-	-	-	-	-	
2 . Indonesia	-	-	-	-	-	
3 . Lao PDR	-	-	-	-	-	
4 . Malaysia	-	-	-	-	-	
5 . Myanmar	205.2	250.0	229.8	230.0 F	232.0 F	1.3 %
6 . Philippines	-	-	-	-	-	
7 . Thailand	-	-	-	-	-	
8 . Timor-Leste	-	-	-	-	-	
9 . Viet Nam	-	-	-	-	-	
SOUTH ASIA						
10 . Bangladesh	83.8	73.2	80.0 F	80.0 F	80.0 F	-0.7 %
11 . Bhutan	8.0 F	8.0 F	7.0 F	6.2	3.9	-4.5 %
12 . India	13 318.0	13 012.2	12 486.3	10 147.8	12 000.0 *	-1.7 %
13 . Maldives	.0 F	.0 F	.0 F	.0 F	.0 F	1.8 %
14 . Nepal	254.4	263.5	259.9	258.1	260.0 F	0.3 %
15 . Pakistan	302.9	389.6	417.1	313.0	400.0 *	-0.3 %
16 . Sri Lanka	10.3	6.7	5.7	5.6	7.5	-4.1 %
CENTRAL ASIA						
17 . Kazakhstan	443.0	130.4	103.8	53.3	53.3 F	-14.7 %
18 . Tajikistan	-	-	-	-	-	
19 . Uzbekistan	.8	1.0 *	.5 *	.5 *	.4 *	-4.0 %
OTHER ASIA						
20 . Afghanistan	-	-	-	-	-	
21 . China	1 832.4	1 250.3	1 148.6	1 140.1	1 070.4 *	-4.9 %
22 . Korea DPR	40.0 F	45.0 *	45.0 F	55.0 F	41.0 F	8.6 %
23 . Iran (Islamic Rep. of)	5.0 F	11.0 F	11.0 F	10.0 F	10.0 F	8.8 %
24 . Mongolia	-	-	-	-	-	
25 . Rep. of Korea	1.8	1.4	1.3	1.7	1.7 F	0.3 %
PACIFIC ISLANDS						
26 . Cook Islands	-	-	-	-	-	
27 . Fiji Islands	-	-	-	-	-	
28 . Kiribati	-	-	-	-	-	
29 . Marshall Islands	-	-	-	-	-	
30 . Micronesia, Fed States of	-	-	-	-	-	
31 . Nauru	-	-	-	-	-	
32 . Niue	-	-	-	-	-	
33 . Palau	-	-	-	-	-	
34 . Papua New Guinea	-	-	-	-	-	
35 . Samoa	-	-	-	-	-	
36 . Solomon Islands	-	-	-	-	-	
37 . Tonga	-	-	-	-	-	
38 . Tuvalu	-	-	-	-	-	
39 . Vanuatu	-	-	-	-	-	
SUB-TOTAL	16 505.6	15 442.3	14 796.0	12 301.3	14 160.2	-2.1 %
DEVELOPED COUNTRIES						
40 . Australia	21.8	39.0 F	36.0	36.0 F	35.0 F	2.8 %
41 . Japan	.4 F	.3	.3 F	.3 F	.3 F	-3.6 %
42 . New Zealand	-	-	-	-	-	
SUB-TOTAL	22.2	39.3	36.3	36.3	35.3	2.7 %
ASIA & PACIFIC*	16 527.8	15 481.6	14 832.3	12 337.6	14 195.5	-2.0 %
REST OF WORLD	19 189.1	21 655.8	21 805.1	21 634.0	22 092.6	1.0 %
WORLD	35 717.0	37 137.4	36 637.4	33 971.6	36 288.1	-0.3 %

Table 24. Cereals : production

Unit: 1000 MT

Country	1993	2000	2001	2002	2003	Annual Growth Rate 1993-2003
DEVELOPING COUNTRIES						
SOUTHEAST ASIA						
1 . Cambodia	2 428.8	4 183.1	4 284.6	3 971.4	4 490.0 *	6.1 %
2 . Indonesia	54 640.8	61 575.0	59 808.0	61 143.8	62 988.9	1.3 %
3 . Lao PDR	1 298.3	2 318.8	2 446.6	2 540.6	2 612.0 *	7.5 %
4 . Malaysia	2 142.4	2 205.8	2 161.0	2 161.0	2 217.1	0.0 %
5 . Myanmar	17 263.0	21 964.0	22 715.1	23 713.0	25 664.0	3.8 %
6 . Philippines	14 232.3	16 900.5	17 479.9	17 589.9	18 509.2	2.5 %
7 . Thailand	22 016.7	30 518.7	31 211.5	30 499.4	31 732.2	3.1 %
8 . Timor-Leste	156.3	139.4 *	122.8 *	147.4	135.6 *	-1.6 %
9 . Viet Nam	23 718.8	34 535.4	34 270.1	36 958.4	37 452.3	4.9 %
SOUTH ASIA						
10 . Bangladesh	28 177.4	39 538.5	38 014.0	39 528.0	39 683.0	4.7 %
11 . Bhutan	118.2 F	157.3	134.8	106.9	93.1	-2.3 %
12 . India	208 626.9	234 931.2	243 072.0	206 497.3	232 048.1	1.0 %
13 . Maldives	.0	.0	.0 F	.0 F	.0 F	-10.1 %
14 . Nepal	5 772.6	7 115.6	7 120.0	7 214.8	7 257.0 *	2.9 %
15 . Pakistan	23 869.7	30 460.7	27 048.0	27 173.2	27 752.8	2.1 %
16 . Sri Lanka	2 609.3	2 896.0	2 728.1	2 890.2	3 106.7	1.7 %
CENTRAL ASIA						
17 . Kazakhstan	21 533.0	11 547.1	15 865.8	15 927.1	14 762.8	-0.2 %
18 . Tajikistan	257.5	544.9	477.6	687.6	867.7	11.4 %
19 . Uzbekistan	2 164.5	3 913.6	4 032.9	5 487.5	5 941.6	8.7 %
OTHER ASIA						
20 . Afghanistan	-	-	-	-	-	-
21 . China	407 930.5	407 336.4	398 390.0	399 997.4	377 462.8	-0.6 %
22 . Korea DPR	9 137.0	2 945.0	3 879.7	4 196.0	4 362.5	-4.7 %
23 . Iran (Islamic Rep. of)	16 287.2	12 874.0	14 945.1	19 881.0	21 110.0	1.0 %
24 . Mongolia	472.5	142.1	142.2	152.9	184.4	-9.4 %
25 . Rep. of Korea	7 041.8	7 500.7	7 860.1	7 082.9	6 459.8	-0.2 %
PACIFIC ISLANDS						
26 . Cook Islands	-	-	-	-	-	-
27 . Fiji Islands	22.86	14.18	15.64	13.98	17.33	-3.8 %
28 . Kiribati	-	-	-	-	-	-
29 . Marshall Islands	-	-	-	-	-	-
30 . Micronesia, Fed States of	-	-	-	-	-	-
31 . Nauru	-	-	-	-	-	-
32 . Niue	-	-	-	-	-	-
33 . Palau	-	-	-	-	-	-
34 . Papua New Guinea	6.03	11.30	12.60	12.80	10.30	6.9 %
35 . Samoa	-	-	-	-	-	-
36 . Solomon Islands	0.00 F	4.80 F	5.20 F	5.00 F	5.00 F	22.6 %
37 . Tonga	-	-	-	-	-	-
38 . Tuvalu	-	-	-	-	-	-
39 . Vanuatu	0.67 F	0.70 F	0.70 F	0.70 F	0.70 F	0.2 %
SUB-TOTAL	871 925.1	936 274.7	938 244.1	915 580.2	926 926.9	0.7 %
DEVELOPED COUNTRIES						
40 . Australia	26 708.8	34 445.2	39 549.5	18 817.5	38 044.5	3.5 %
41 . Japan	10 737.4	12 796.0	12 254.8	12 183.9	10 823.0	-1.5 %
42 . New Zealand	803.1	854.4	938.2	936.4	899.1	1.3 %
SUB-TOTAL	38 249.3	48 095.6	52 742.5	31 937.8	49 766.6	1.8 %
ASIA & PACIFIC*	910 174	984 370	990 987	947 518	976 694	0.8 %
REST OF WORLD	992 733	1 076 461	1 117 539	1 081 537	1 098 616	0.8 %
WORLD	1 902 907	2 060 832	2 108 526	2 029 055	2 075 309	0.8 %

Table 25.Cereals : yield

Unit: kg/ha

Country	1993	2000	2001	2002	2003	Annual Growth Rate 1993-2003
DEVELOPING COUNTRIES						
SOUTHEAST ASIA						
1 . Cambodia	1 301	2 134	2 093	1 922	2 148	4.1 %
2 . Indonesia	3 916	4 026	4 045	4 174	4 247	0.8 %
3 . Lao PDR	2 294	3 006	3 094	3 068	3 257	3.3 %
4 . Malaysia	3 003	3 038	3 136	3 088	3 172	0.2 %
5 . Myanmar	2 875	3 191	3 240	3 455	3 513	2.1 %
6 . Philippines	2 213	2 581	2 668	2 731	2 813	2.4 %
7 . Thailand	2 231	2 719	2 727	2 711	2 584	1.5 %
8 . Timor-Leste	2 032	1 937	1 665	2 130	1 926	-0.5 %
9 . Viet Nam	3 362	4 113	4 168	4 442	4 480	2.9 %
SOUTH ASIA						
10 . Bangladesh	2 648	3 374	3 298	3 324	3 315	3.4 %
11 . Bhutan	1 214	1 469	1 513	1 591	1 585	2.0 %
12 . India	2 085	2 294	2 431	2 219	2 356	1.3 %
13 . Maldives	1 000	800	1 000	1 000	1 000	-3.4 %
14 . Nepal	1 859	2 136	2 177	2 171	2 166	2.1 %
15 . Pakistan	1 958	2 408	2 231	2 264	2 302	2.1 %
16 . Sri Lanka	3 024	3 338	3 425	3 405	3 282	1.5 %
CENTRAL ASIA						
17 . Kazakhstan	989	944	1 217	1 146	1 096	4.6 %
18 . Tajikistan	961	1 323	1 255	1 894	2 202	6.4 %
19 . Uzbekistan	1 662	2 443	2 911	4 400	3 346	8.9 %
OTHER ASIA						
20 . Afghanistan	-	-	-	-	-	-
21 . China	4 568	4 756	4 802	4 890	4 849	0.6 %
22 . Korea DPR	6 120	2 371	3 020	3 188	3 350	-2.9 %
23 . Iran (Islamic Rep. of)	1 639	1 833	1 931	2 277	2 418	2.8 %
24 . Mongolia	866	785	757	691	827	-0.3 %
25 . Rep. of Korea	5 503	6 436	6 560	6 087	5 756	0.5 %
PACIFIC ISLANDS						
26 . Cook Islands	-	-	-	-	-	-
27 . Fiji Islands	2 275	2 495	2 421	2 561	2 469	1.0 %
28 . Kiribati	-	-	-	-	-	-
29 . Marshall Islands	-	-	-	-	-	-
30 . Micronesia, Fed States of	-	-	-	-	-	-
31 . Nauru	-	-	-	-	-	-
32 . Niue	-	-	-	-	-	-
33 . Palau	-	-	-	-	-	-
34 . Papua New Guinea	2 680	4 109	4 065	4 197	3 552	3.9 %
35 . Samoa	-	-	-	-	-	-
36 . Solomon Islands	0	4 000	4 000	3 846	3 846	-0.7 %
37 . Tonga	-	-	-	-	-	-
38 . Tuvalu	-	-	-	-	-	-
39 . Vanuatu	515	538	538	538	538	0.2 %
AVERAGE	2 912	3 201	3 262	3 257	3 255	1.3 %
DEVELOPED COUNTRIES						
40 . Australia	1 975	1 962	2 248	1 096	2 072	0.1 %
41 . Japan	4 429	6 257	6 107	6 085	5 451	0.8 %
42 . New Zealand	5 408	6 273	6 484	6 441	6 465	2.0 %
AVERAGE	2 376	2 437	2 671	1 654	2 430	-0.8 %
ASIA & PACIFIC*	2 885	3 153	3 224	3 154	3 200	1.2 %
REST OF WORLD	2 615	2 974	3 029	2 990	2 976	1.4 %
WORLD	2 737	3 057	3 118	3 064	3 078	1.3 %

Table 26. Cereals: area harvested

Unit: 1000 ha

Country	1993	2000	2001	2002	2003	Annual Growth Rate 1993-2003
DEVELOPING COUNTRIES						
SOUTHEAST ASIA						
1 . Cambodia	1 866.5	1 960.6	2 047.5	2 066.2	2 090.0	1.9 %
2 . Indonesia	13 952.3	15 293.0	14 785.9	14 648.0	14 832.1	0.5 %
3 . Lao PDR	565.8	771.5	790.6	828.1	802.0 F	4.1 %
4 . Malaysia	713.4	726.1	689.0	699.7	699.0 *	-0.2 %
5 . Myanmar	6 003.9	6 884.1	7 010.3	6 864.0	7 305.0	1.7 %
6 . Philippines	6 431.8	6 548.4	6 552.0	6 441.8	6 579.0	0.2 %
7 . Thailand	9 868.4	11 225.0	11 445.6	11 250.5	12 279.5	1.6 %
8 . Timor-Leste	76.9	72.0 F	73.8	69.2	70.4	-1.1 %
9 . Viet Nam	7 055.9	8 396.5	8 222.2	8 320.7	8 359.1	1.9 %
SOUTH ASIA						
10 . Bangladesh	10 642.1	11 719.5	11 525.5	11 890.9	11 970.8	1.3 %
11 . Bhutan	97.4 F	107.1	89.1	67.2	58.7	-4.3 %
12 . India	100 066.5	102 402.4	99 993.1	93 066.2	98 487.2	-0.3 %
13 . Maldives	.0 F	.0 F	.0 F	.0 F	.0 F	-7.0 %
14 . Nepal	3 105.5	3 330.7	3 270.6	3 323.9	3 350.3	0.8 %
15 . Pakistan	12 192.4	12 650.4	12 124.3	12 002.1	12 057.0	-0.1 %
16 . Sri Lanka	862.8	867.5	796.6	848.8	946.4	0.2 %
CENTRAL ASIA						
17 . Kazakhstan	21 780.6	12 236.6	13 036.3	13 895.0	13 470.5	-4.6 %
18 . Tajikistan	268.0	411.8	380.6	363.1	394.1	4.8 %
19 . Uzbekistan	1 302.1	1 601.8	1 385.4	1 247.1	1 775.5	-0.2 %
OTHER ASIA						
20 . Afghanistan	-	-	-	-	-	-
21 . China	89 308.0	85 639.7	82 960.9	81 805.5	77 839.7	-1.2 %
22 . Korea DPR	1 493.0	1 242.0	1 284.7	1 316.2	1 302.4	-1.8 %
23 . Iran (Islamic Rep. of)	9 938.7	7 022.1	7 738.8	8 732.0	8 730.0	-1.8 %
24 . Mongolia	545.5	181.0	187.9	221.3	223.1	-9.1 %
25 . Rep. of Korea	1 279.7	1 165.5	1 198.1	1 163.6	1 122.3	-0.7 %
PACIFIC ISLANDS						
26 . Cook Islands	-	-	-	-	-	-
27 . Fiji Islands	10.05	5.68	6.46 F	5.46 F	7.02 F	-4.7 %
28 . Kiribati	-	-	-	-	-	-
29 . Marshall Islands	-	-	-	-	-	-
30 . Micronesia, Fed States of	-	-	-	-	-	-
31 . Nauru	-	-	-	-	-	-
32 . Niue	-	-	-	-	-	-
33 . Palau	-	-	-	-	-	-
34 . Papua New Guinea	2.25 F	2.75 F	3.10 F	3.05 F	2.90 F	2.9 %
35 . Samoa	-	-	-	-	-	-
36 . Solomon Islands	0.00 F	1.20 F	1.30 F	1.30 F	1.30 F	23.4 %
37 . Tonga	-	-	-	-	-	-
38 . Tuvalu	-	-	-	-	-	-
39 . Vanuatu	1.3 F	1.3 F	1.3 F	1.3 F	1.3 F	0.0 %
SUB-TOTAL	299 430.8	292 466.3	287 600.9	281 142.0	284 756.6	-0.5 %
DEVELOPED COUNTRIES						
40 . Australia	13 523.2	17 552.3	17 592.5	17 161.5	18 359.5	3.3 %
41 . Japan	2 424.1	2 045.1	2 006.6	2 002.2	1 985.7	-2.3 %
42 . New Zealand	148.5	136.2	144.7	145.4	139.1	-0.7 %
SUB-TOTAL	16 095.9	19 733.6	19 743.8	19 309.0	20 484.3	2.6 %
ASIA & PACIFIC*	315 526.7	312 199.9	307 344.7	300 451.0	305 240.9	-0.4 %
REST OF WORLD	379 629.7	361 915.3	368 948.6	361 715.9	369 097.4	-0.6 %
WORLD	695 156.4	674 115.2	676 293.2	662 166.9	674 338.2	-0.5 %