



Food and Agriculture
Organization of the
United Nations

ADVISORY COMMITTEE
ON SUSTAINABLE
FOREST-BASED
INDUSTRIES (ACFSI)

Assessment of industrial roundwood production from planted forests



Background



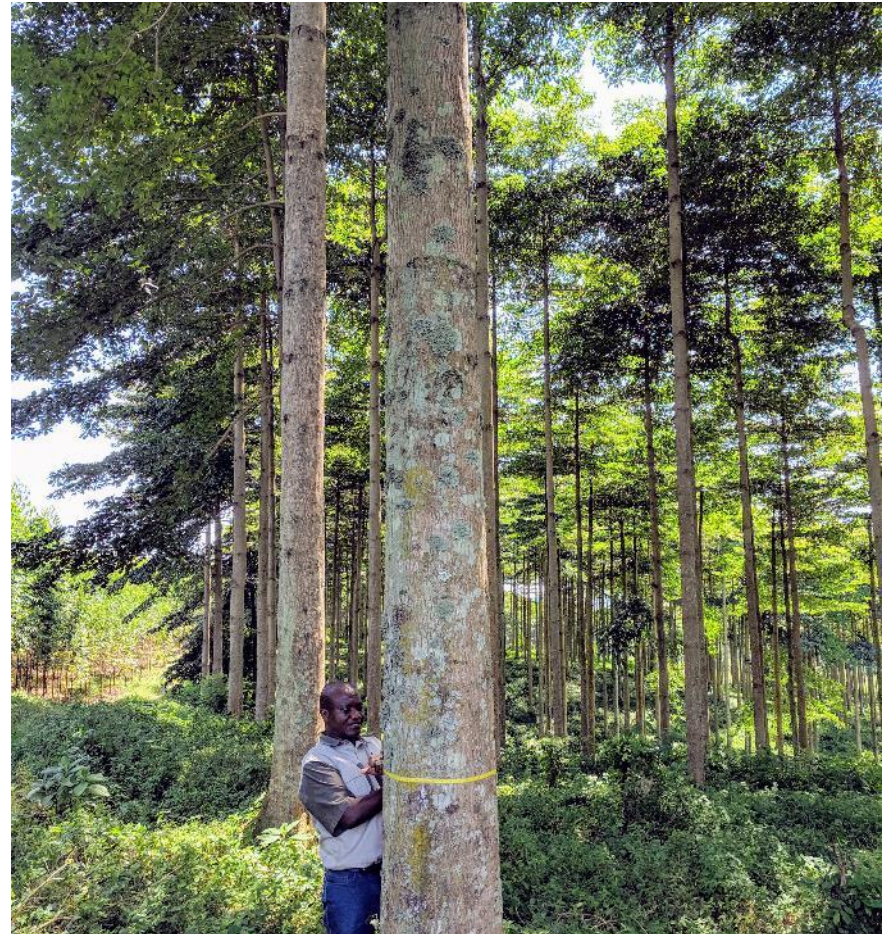
Food and Agriculture
Organization of the
United Nations

ADVISORY COMMITTEE
ON SUSTAINABLE
FOREST-BASED
INDUSTRIES (ACSFI)

In 2014, FAO estimated that planted forests provided 45% of the global industrial roundwood supply.

This paper has been cited hundreds of times since.

FAO's Global Forest Resources Assessment (FRA) 2020 reports planted forest area's rate of increase has slowed from 2010 to 2020. It also disaggregates plantations as a type of planted forest for the first time since 2005.



Jürgensen, C., Kollert, W. & Lebedys, A. 2014. Assessment of industrial roundwood production from planted forests. *FAO Planted Forests and Trees Working Paper*, FP/48/E(48): 40. (also available at <http://www.fao.org/forestry/plantedforests/67508@170537/en/>).

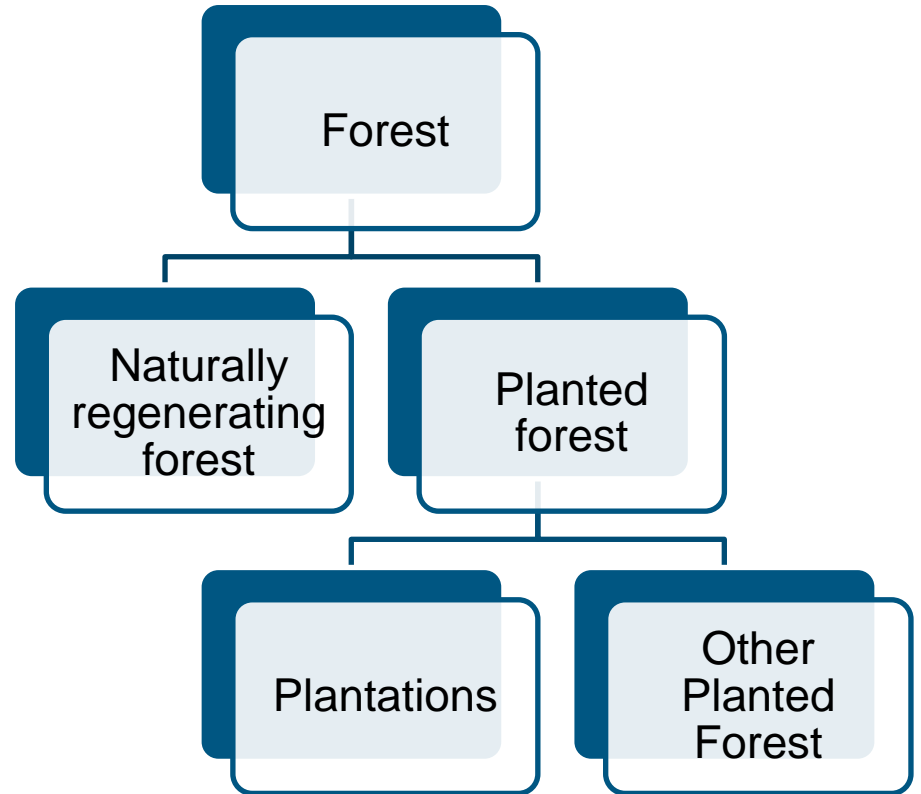
Payn, T., Carnus, J.M., Freer-Smith, P., Kimberley, M., Kollert, W., Liu, S., Orazio, C., Rodriguez, L., Silva, L.N. & Wingfield, M.J. 2015. Changes in planted forests and future global implications. *Forest Ecology and Management*, 352: 57–67. <https://doi.org/10.1016/j.foreco.2015.06.021>



Food and Agriculture
Organization of the
United Nations

ADVISORY COMMITTEE
ON SUSTAINABLE
FOREST-BASED
INDUSTRIES (ACSFII)

FAO definitions



Background

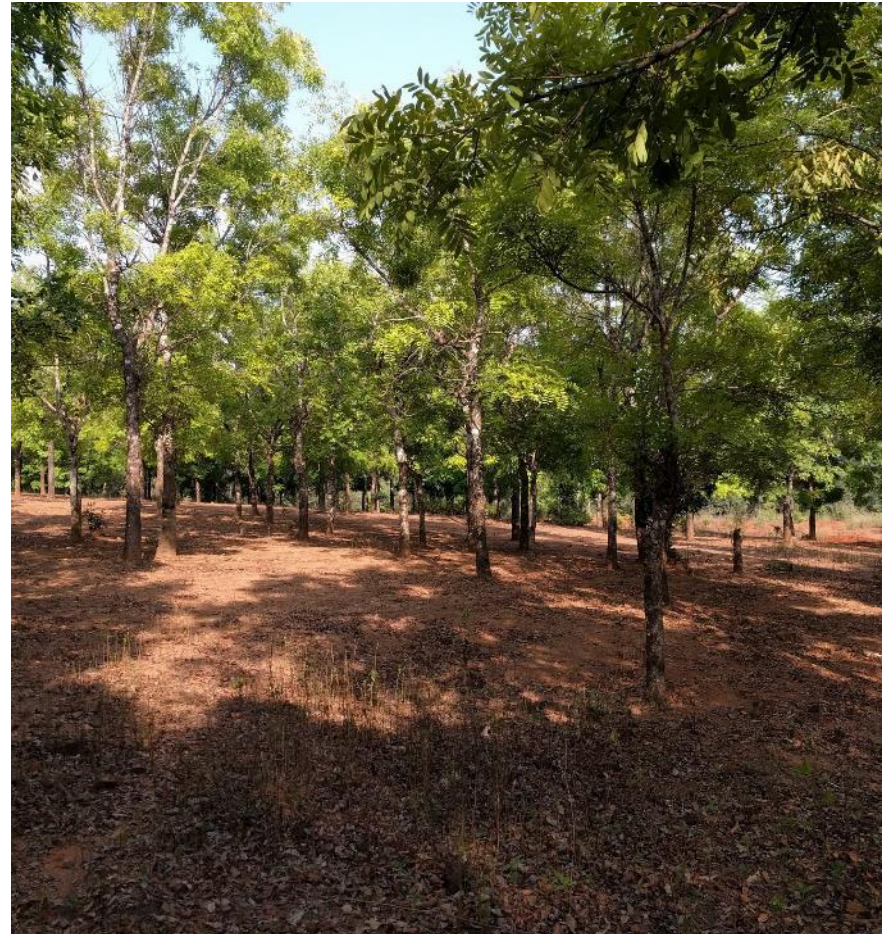


Food and Agriculture
Organization of the
United Nations

ADVISORY COMMITTEE
ON SUSTAINABLE
FOREST-BASED
INDUSTRIES (ACSFII)

This assessment, which is currently a collaboration between FAO, ACSFI, ITTO, and IUFRO, will answer the following questions:

- What is the current global industrial roundwood production from planted forests and plantations?
- Which genera are the most prevalent in planted forest and plantations (in terms of area)?
- What examples do we have (case studies) of sustainable increase in planted forest productivity of wood, and how was it achieved?



Process



Food and Agriculture
Organization of the
United Nations

ADVISORY COMMITTEE
ON SUSTAINABLE
FOREST-BASED
INDUSTRIES (ACSFI)

Design and
survey
preparation

Case studies
produced in
collaboration with
the International
Tropical Timber
Organization

Survey to focal
points in 53
countries (source
of 95% of global
in. roundwood
production)

Production of
papers for
presentation at
the next World
Forestry
Congress with
IUFRO and
partners



Food and Agriculture
Organization of the
United Nations

ADVISORY COMMITTEE
ON SUSTAINABLE
FOREST-BASED
INDUSTRIES (ACFSI)

Thanks and closing thoughts

