

RAP PUBLICATION : 2003/10

# SELECTED INDICATORS OF FOOD AND AGRICULTURE DEVELOPMENT IN ASIA-PACIFIC REGION 1992-2002



FOOD AND AGRICULTURE ORGANIZATION OF THE UNITED NATIONS  
REGIONAL OFFICE FOR ASIA AND THE PACIFIC, BANGKOK  
OCTOBER 2003

The designations employed and the presentation of material in this publication do not imply the expression of any opinion whatsoever on the part of the Food and Agriculture Organization of the United Nations concerning the legal status of any country, territory, city or area of its authorities, or concerning the delimitation of its territories or boundaries.

All rights reserved. Reproduction and dissemination of material in this information product for educational or other non-commercial purposes are authorized without any prior written permission from the copyright holders provided the source is fully acknowledged. Reproduction of material in this information product for sale or other commercial purposes is prohibited without written permission of the copyright holders. Applications for such permission should be addressed to Dr. Frederick Baker, Senior Statistician, FAO Regional Office for Asia and the Pacific, Maliwan Mansion, 39 Phra Atit Road, Bangkok 10200, Thailand or by e-mail to [Frederick.baker@fao.org](mailto:Frederick.baker@fao.org).

© FAO, 2003

Map of Asia and the Pacific is used courtesy of The General Libraries, The University of Texas at Austin. The pictures on the cover, counter clockwise from the top, were taken by P. Johnson, Ministry of Agriculture on Forestry (Republic of Korea), F. Botts respectively. Tables were prepared by the FAO Regional Office for Asia and the Pacific, on the basis of information available as of August 2003. Please note that growth rates take into consideration data that are not printed. Inquiries about the technical contents should be addressed to:

Senior Statistician  
FAO Regional Office for Asia and the Pacific  
Maliwan Mansion, 39 Phra Atit Road  
Bangkok, 10200  
Thailand  
Tel : (662) 697-4000  
Fax : (662) 697-4445

FAO food and agriculture statistics are available on the internet at:

<http://www.fao.org>

## FOREWORD

This is the twentieth issue of the publication *Selected indicators of food and agriculture development in Asia-Pacific region*. It presents data on selected items for the years 1992-2003, except some tables that provide information for the period 1991-2001. Most tables show two types of information: annual figures for 1992, 1999, 2000, 2001 and 2002 and the exponential growth rate for the period 1992-2002. The indicators are grouped under the following headings: Agricultural land and population, Agricultural inputs, Production indices, Staple food crops, Edible oil crops, Horticultural crops, Fibre crops, Other crops, Livestock, Agricultural trade, Fisheries, Forestry, Nutrition and Other indicators. A table reporting the status of organic farming in the region has been added.

Countries of the region are shown under two groups: "Developing countries" and "Developed countries". For comparison purposes, figures relating to "Rest of world" and "World" are also presented. Data for new member countries in the region have been included in this year's publication and a new format has been adopted. Please note that country data for the Central Asian countries were not reported before 1992 and for the Marshall Islands and Palau before 1995. Consequently data for these countries are not presented for 1991.

For almost all commodity tables, data are retrieved from the FAO computerized data base, especially FAOSTAT, or from the FAO Yearbooks. These, in turn, are based on information supplied by member countries.

The growth rates shown in the present publication have been worked out using the exponential growth method to indicate the overall regional performance and also to highlight inter-country differences.

Various units of FAO including the Statistics Division and the Information Systems and Technology Division have cooperated with the FAO Regional Office for Asia and the Pacific in the preparation of this publication, providing computer programmes and data bases for the production of tables. This collaboration is duly acknowledged.

He Changchui  
Assistant Director-General  
and FAO Regional Representative  
for Asia and the Pacific

Bangkok, October 2003

## SYMBOLS USED IN THE TABLES

<b>*</b>	Unofficial figure
<b>F</b>	FAO estimate
<b>T</b>	Trend calculation
<b>-</b>	Data not available
<b>MT</b>	Metric ton
<b>ha</b>	Hectare
<b>kg</b>	Kilogram
<b>kg/ha</b>	Kilogram per hectare
<b>CUM</b>	Cubic meter

In most tables a blank space has the same meaning as the symbol (-) defined above.

For crop yields and all sub-regional totals no (F) or (\*) symbol is used as these are derived data.

To divide decimals from whole numbers, a full stop (.) is used.

## CONTENTS

Table		Page
<b>AGRICULTURAL LAND AND POPULATION</b>		
1	Land use . . . . .	3
2	Agricultural land . . . . .	4
3	Agricultural population . . . . .	5
4	Agricultural land and population . . . . .	6
<b>AGRICULTURAL INPUTS</b>		
5	Irrigation . . . . .	9
6	Irrigated land as proportion of agricultural land . . . . .	10
7	Mineral fertilizers: consumption . . . . .	11
8	Mineral fertilizers: consumption per ha of agricultural land . . . . .	12
9	Agricultural tractors: number in use . . . . .	13
<b>PRODUCTION INDICES</b>		
10	Agricultural production indices . . . . .	17
11	Food production indices . . . . .	18
<b>STAPLE FOOD CROPS</b>		
<b>A. Cereal Crops</b>		
12	Rice paddy: production . . . . .	21
13	Rice paddy: yield . . . . .	22
14	Rice paddy: area harvested . . . . .	23
15	Wheat: production . . . . .	24
16	Wheat: yield . . . . .	25
17	Wheat: area harvested . . . . .	26
18	Maize: production . . . . .	27
19	Maize: yield . . . . .	28
20	Maize: area harvested . . . . .	29
21	Millet: production . . . . .	30
22	Millet: yield . . . . .	31
23	Millet: area harvested . . . . .	32
24	Cereals: production . . . . .	33
25	Cereals: yield . . . . .	34
26	Cereals: area harvested . . . . .	35
<b>B. Roots and Tubers</b>		
27	Cassava: production . . . . .	39
28	Cassava: yield . . . . .	40
29	Cassava: area harvested . . . . .	41
30	Sweet potatoes: production . . . . .	42

31	Sweet potatoes: yield . . . . .	43
32	Sweet potatoes: area harvested . . . . .	44
33	Potatoes: production . . . . .	45
34	Potatoes: yield . . . . .	46
35	Potatoes: area harvested . . . . .	47
36	Taro: production . . . . .	48
37	Taro: yield . . . . .	49
38	Taro: area harvested . . . . .	50
39	Roots and tubers: production . . . . .	51
40	Roots and tubers: yield . . . . .	52
41	Roots and tubers: area harvested . . . . .	53

### **C. Pulses**

42	Pulses: production . . . . .	57
43	Pulses: yield . . . . .	58
44	Pulses: area harvested . . . . .	59

### **EDIBLE OIL CROPS**

45	Groundnuts in shell: production . . . . .	63
46	Groundnuts in shell: yield . . . . .	64
47	Groundnuts in shell: area harvested . . . . .	65
48	Soybean: production . . . . .	66
49	Soybean: yield . . . . .	67
50	Soybean: area harvested . . . . .	68
51	Coconut: production . . . . .	69
52	Palm oil: production . . . . .	70
53	Oil crops (oil equivalent): production . . . . .	71

### **HORTICULTURE CROPS**

54	Fruits total (excluding melon): production . . . . .	75
55	Bananas: production. . . . .	76
56	Citrus fruit total: production . . . . .	77
57	Mangoes: production . . . . .	78
58	Vegetables total (incl. melons): production . . . . .	79
59	Cabbages: production . . . . .	80
60	Cabbages: yield . . . . .	81
61	Cabbages: area harvested . . . . .	82
62	Tomatoes: production . . . . .	83
63	Tomatoes: yield . . . . .	84
64	Tomatoes: area harvested . . . . .	85
65	Onions (dry): production . . . . .	86
66	Onions (dry): yield . . . . .	87
67	Onions (dry): area harvested . . . . .	88

## FIBRE CROPS

68	Jute and jute-like fibres: production . . . . .	91
69	Jute and jute-like fibres: yield . . . . .	92
70	Jute and jute-like fibres: area harvested . . . . .	93
71	Seed cotton: production . . . . .	94
72	Seed cotton: yield . . . . .	95
73	Seed cotton: area harvested . . . . .	96
74	Raw silk: production (including waste) . . . . .	97

## OTHER CROPS

75	Natural rubber: production . . . . .	101
76	Sugar cane: production . . . . .	102
77	Sugar cane: yield . . . . .	103
78	Sugar cane: area harvested . . . . .	104
79	Coffee (green): production . . . . .	105
80	Coffee (green): yield . . . . .	106
81	Coffee (green): area harvested . . . . .	107
82	Tea: production . . . . .	108
83	Tea: yield . . . . .	109
84	Tea: area harvested . . . . .	110
85	Cocoa bean: production . . . . .	111
86	Cocoa bean: yield . . . . .	112
87	Cocoa bean: area harvested . . . . .	113
88	Chillies and peppers: production . . . . .	114
89	Chillies and peppers: yield . . . . .	115
90	Chillies and peppers: area harvested . . . . .	116

## LIVESTOCK

91	Livestock production indices: total . . . . .	119
92	Livestock production indices: per caput . . . . .	120
93	Cattle: population . . . . .	121
94	Buffalo: population . . . . .	122
95	Pig: population . . . . .	123
96	Sheep: population . . . . .	124
97	Goat: population . . . . .	125
98	Chicken: population . . . . .	126
99	Duck: population . . . . .	127
100	Meat total: production . . . . .	128
101	Beef and veal: production . . . . .	129
102	Buffalo meat: production . . . . .	130
103	Pig meat: production . . . . .	131
104	Mutton and lamb: production . . . . .	132
105	Goat meat: production . . . . .	133
106	Poultry meat: production . . . . .	134
107	Milk total: production . . . . .	135
108	Cow milk: production . . . . .	136
109	Buffalo milk: production . . . . .	137
110	Hen eggs: production . . . . .	138

## AGRICULTURAL TRADE

111	Agricultural products: imports in value. . . . .	141
112	Agricultural products: exports in value. . . . .	142
113	Cereals: imports in volume . . . . .	143
114	Cereals: exports in volume . . . . .	144
115	Rice: imports in volume . . . . .	145
116	Rice: exports in volume . . . . .	146
117	Wheat + flour, wheat equiv.: imports in volume . . . . .	147
118	Wheat + flour, wheat equiv.: exports in volume . . . . .	148
119	Palm oil: imports in volume . . . . .	149
120	Palm oil: exports in volume . . . . .	150
121	Natural rubber: imports in volume . . . . .	151
122	Natural rubber: exports in volume . . . . .	152
123	Coffee (green + roast): imports in volume . . . . .	153
124	Coffee (green + roast): exports in volume . . . . .	154
125	Tea: imports in volume . . . . .	155
126	Tea: exports in volume . . . . .	156
127	Cotton lint: imports in volume . . . . .	157
128	Cotton lint: exports in volume . . . . .	158
129	Jute: imports in volume . . . . .	159
130	Jute: exports in volume . . . . .	160
131	Silk: imports in volume . . . . .	161
132	Silk: exports in volume . . . . .	162

## FISHERIES

133	Inland capture fisheries: production . . . . .	165
134	Marine capture fisheries: production . . . . .	166
135	Total capture fisheries: production . . . . .	167
136	Aquaculture: production. . . . .	168
137	Fish and fish products: imports and exports in volume . . . . .	169
138	Fish and fish products: imports and exports in value . . . . .	170

## FORESTRY

139	Roundwood: production. . . . .	173
140	Fuelwood and charcoal: production . . . . .	174
141	Industrial roundwood: production . . . . .	175
142	Sawlogs and veneer logs: production . . . . .	176
143	Sawnwood and sleepers: production . . . . .	177
144	Wood-based panels: production . . . . .	178
145	Wood pulp: production . . . . .	179
146	Paper and paperboard: production . . . . .	180
147	Forestry products: imports in value . . . . .	181
148	Forestry products: exports in value . . . . .	182



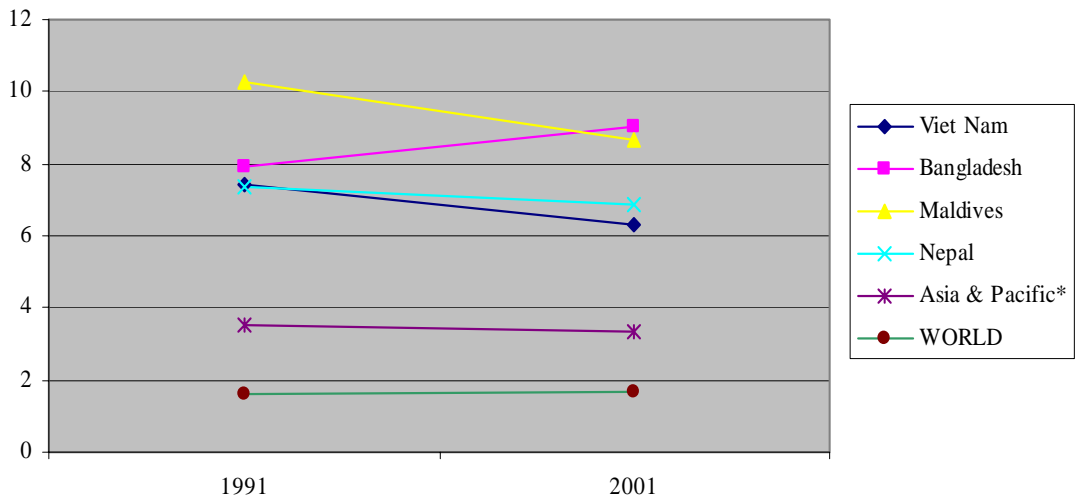
## NUTRITION

149	Per capita dietary energy supply (DES) and proportion of population with DES below minimum energy requirement . . . .	185
150	Daily per capita energy availability from major food groups: total vegetable and animal products . . . . .	186
151	Daily per capita energy availability from major food groups: cereals, rootcrops and pulses . . . . .	187
152	Daily per capita energy availability from major food groups: treenuts, oilcrops, fruits and vegetables . . . . .	188
153	Daily per capita energy availability from major food groups: sugar and sweeteners, alcoholic beverage, vegetable oil and animal fats . . . . .	189
154	Availability from major food groups as percentage of total Dietary energy supply: vegetable and animal products . . . . .	190
155	Availability from major food groups as percentage of total Dietary energy supply: cereals, rootcrops and pulses . . . . .	191
156	Availability from major food groups as percentage of total Dietary energy supply: treenuts, oilcrops, fruits and vegetables . . . . .	192
157	Availability from major food groups as percentage of total dietary energy supply: sugar and sweeteners, alcoholic beverage, vegetable oil and animal fats . . . . .	193
158	Desirable dietary patterns (DDP) . . . . .	194
159	Percentage of protein and fats from animal sources in total dietary energy supply . . . . .	195
160	Yearly per capita availability in kilogrammes from major food groups, 1998 . . . . .	196
161	Some population indicators affecting nutritional status . . . . .	197

## OTHER INDICATORS

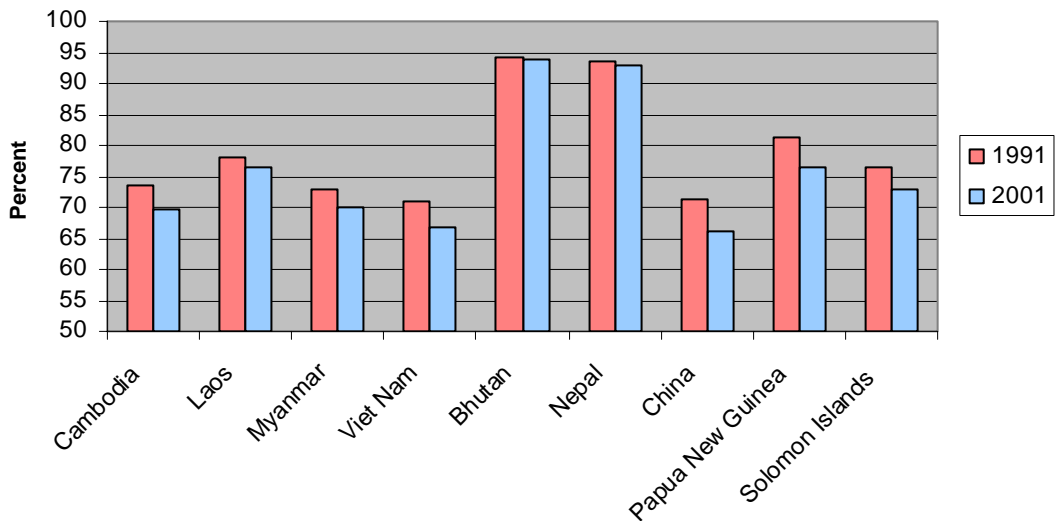
162	Number and area of agricultural holdings . . . . .	201
163	Organic agriculture . . . . .	202
164	Population and agricultural labour force . . . . .	203
165	Growth of GDP and agricultural GDP . . . . .	204
166	Agriculture's share in GDP, growth rate of value added in agriculture and in industry . . . . .	205
167	GNP per caput, its growth, inflation and ODA receipts . . . . .	206
168	Food consumption, food imports and food aid . . . . .	207

**Countries in Asia-Pacific region with largest agricultural population per ha of agricultural land compared with the region and the world**



## AGRICULTURAL LAND AND POPULATION

**Countries in Asia-Pacific region with largest percentage of agricultural population**



**Table 1. Land use in 2001**

Unit: 1000 ha

Country	Total Land Area	Arable and Permanent Crops Land	Permanent Pasture	Forests and Woodland*	Other Land	Land Use Distribution (in %)			
						Arable & Permanent Crops Land	Permanent Pasture	Forests & Woodland*	Other Land
<b>DEVELOPING COUNTRIES</b>									
SOUTHEAST ASIA									
1 . Cambodia	17 652	3 807 F	1 500 F	12 200 F	147 F	21.6	8.5	69.1	0.8
2 . Indonesia	181 157	33 600 F	11 177 F	111 774 F	27 412 F	18.5	6.2	61.7	15.1
3 . Lao PDR	23 080	958 F	878 F	12 550 F	8 840 F	4.2	3.8	54.4	38.3
4 . Malaysia	32 855	7 585 F	285 F	22 248 F	2 722 F	23.1	0.9	67.7	8.3
5 . Myanmar	65 755	10 625	314	32 400 F	22 934 F	16.2	0.5	49.3	34.9
6 . Philippines	29 817	10 650 F	1 280 F	13 600 F	5 037 F	35.7	4.3	45.6	16.9
7 . Thailand	51 089	18 300 F	800 F	14 500 F	15 329 F	35.8	1.6	28.4	30.0
8 . Viet Nam	32 549	8 438 F	642 F	9 650 F	15 759 F	25.9	2.0	29.6	48.4
SOUTH ASIA									
9 . Bangladesh	13 017	8 485	600 F	1 892	2 401 F	65.2	4.6	14.5	18.4
10 . Bhutan	4 700	165 F	415 F	3 100 F	1 110 F	3.5	8.8	66.0	23.6
11 . India	297 319	169 900 F	10 910 F	68 500 F	47 789 F	57.1	3.7	23.0	16.1
12 . Maldives	30	9 F	1 F	1 F	20 F	30.0	3.3	3.3	66.7
13 . Nepal	14 300	3 192 F	1 757 F	5 750 F	4 020 F	22.3	12.3	40.2	28.1
14 . Pakistan	77 088	22 160	5 000 F	3 480 F	47 098 F	28.7	6.5	4.5	61.1
15 . Sri Lanka	6 463	1 911	440 F	2 100 F	2 040 F	29.6	6.8	32.5	31.6
CENTRAL ASIA									
16 . Kazakhstan	269 970	21 671 F	185 098 F	9 600 F	38 719 F	8.0	68.6	3.6	14.3
17 . Tajikistan	14 060	1 060 F	3 500 F	537 F	9 023 F	7.5	24.9	3.8	64.2
18 . Uzbekistan	41 424	4 830 F	22 800 F	1 300 F	12 481 F	11.7	55.0	3.1	30.1
OTHER ASIA									
19 . China	932 742	155 275 F	400 001 F	130 518	268 744 F	16.6	42.9	14.0	28.8
20 . DPR Korea	12 041	2 800 F	50 F	7 370 F	1 921 F	23.3	0.4	61.2	16.0
21 . Iran (Islamic Rep. of)	163 620	16 548 F	44 000 F	11 400 F	89 261 F	10.1	26.9	7.0	54.6
22 . Mongolia	156 650	1 200	129 300	13 750 F	24 431 F	0.8	82.5	8.8	15.6
23 . Rep. of Korea	9 873	1 889	54 F	6 456	1 321 F	19.1	0.5	65.4	13.4
PACIFIC ISLANDS									
24 . Cook Islands	23	7 F	0 F	0 F	16 F	30.4	0.0	0.0	69.6
25 . Fiji Islands	1 827	285 F	175 F	1 185 F	209 F	15.6	9.6	64.9	11.4
26 . Kiribati	73	39 F	0 F	2 F	32 F	53.4	0.0	2.7	43.8
27 . Marshall Islands	18	10 F	4 F	0 F	0 F	55.6	22.2	0.0	0.0
28 . Nauru	2	0 F	0 F	0 F	2 F	0.0	0.0	0.0	100.0
29 . Niue	26	7 F	1 F	5 F	13 F	26.9	3.8	19.2	50.0
30 . Palau	46	6 F	3 F			13.0	6.5	0.0	0.0
31 . Papua New Guinea	45 286	860 F	175 F	42 000 F	2 348 F	1.9	0.4	92.7	5.2
32 . Samoa	283	129 F	2 F	134 F	26 F	45.6	0.7	47.3	9.2
33 . Solomon Islands	2 799	74 F	40 F	2 450 F	238 F	2.6	1.4	87.5	8.5
34 . Tonga	72	48 F	4 F	8 F	12 F	66.7	5.6	11.1	16.7
35 . Vanuatu	1 219	120 F	42 F	914 F	148 F	9.8	3.4	75.0	12.1
SUB-TOTAL	2 498 925	506 643	821 248	541 374	651 605	20.3	32.9	21.7	26.1
<b>DEVELOPED COUNTRIES</b>									
36 . Australia	768 230	50 600 F	404 900 F	145 000 F	154 130 F	6.6	52.7	18.9	20.1
37 . Japan	36 450 F	4 794	405 F	24 621 F	6 306 F	13.2	1.1	67.5	17.3
38 . New Zealand	26 799	3 372 F	13 863	7 667 F	2 525 F	12.6	51.7	28.6	9.4
SUB-TOTAL	831 479	58 766	419 168	177 288	162 961	7.1	50.4	21.3	19.6
ASIA & PACIFIC*	3 330 405	565 409	1 240 416	718 662	814 567	17.0	37.2	21.6	24.5
REST OF WORLD	9 737 261	966 681	2 249 418	3 453 773	3 079 720	9.9	23.1	35.5	31.6
WORLD	13 067 670	1 532 090	3 489 834	4 172 435	3 894 287	11.7	26.7	31.9	29.8

\* latest data for forests and woodland is for 1994

**Table 2. Agricultural land\*\***

Unit: 1000 ha

Country	Total Land Area	Agricultural Land		Agricultural Land as % of Total Land	
		1991	2001	1991	2001
<b>DEVELOPING COUNTRIES</b>					
SOUTHEAST ASIA					
1 . Cambodia	17 652	3 800 F	3 807 F	21.5 %	21.6 %
2 . Indonesia	181 157	29 797	33 600 F	16.4 %	18.5 %
3 . Lao PDR	23 080	862 F	958 F	3.7 %	4.2 %
4 . Malaysia	32 855	7 197 F	7 585 F	21.9 %	23.1 %
5 . Myanmar	65 755	10 057 F	10 625	15.3 %	16.2 %
6 . Philippines	29 817	9 887 F	10 650 F	33.2 %	35.7 %
7 . Thailand	51 089	20 726 F	18 300 F	40.6 %	35.8 %
8 . Viet Nam	32 549	6 425	8 438 F	19.7 %	25.9 %
SOUTH ASIA					
9 . Bangladesh	13 017	9 137 F	8 485 F	70.2 %	65.2 %
10 . Bhutan	4 700	132 F	165 F	2.8 %	3.5 %
11 . India	297 319	169 340	169 900 F	57.0 %	57.1 %
12 . Maldives	30	8 F	9 F	26.7 %	30.0 %
13 . Nepal	14 300	2 356 F	3 192 F	16.5 %	22.3 %
14 . Pakistan	77 088	20 960 F	22 160 F	27.2 %	28.7 %
15 . Sri Lanka	6 463	1 903 F	1 911 F	29.4 %	29.6 %
CENTRAL ASIA					
16 . Kazakhstan	269 970		21 671 F		8.0 %
17 . Tajikistan	14 060		1 060 F		7.5 %
18 . Uzbekistan	41 424		4 830 F		11.7 %
OTHER ASIA					
19 . China	932 742	131 391 F	155 275 F	14.1 %	16.6 %
20 . DPR Korea	12 041	2 600 F	2 800 F	21.6 %	23.3 %
21 . Iran (Islamic Rep. of)	163 620	17 997 F	16 548 F	11.0 %	10.1 %
22 . Mongolia	156 650	1 369	1 200	0.9 %	0.8 %
23 . Rep. of Korea	9 873	2 091 F	1 889	21.2 %	19.1 %
PACIFIC ISLANDS					
24 . Cook Islands	23	6	7 F	26.1 %	30.4 %
25 . Fiji Islands	1 827	251	285	13.7 %	15.6 %
26 . Kiribati	73	39 F	39 F	53.4 %	53.4 %
27 . Marshall Islands	18		10 F	0.0 %	55.6 %
28 . Nauru	2	0 F	0 F	0.0 %	0.0 %
29 . Niue	26	7 F	7 F	26.9 %	26.9 %
30 . Palau	46		6 F	0.0 %	13.0 %
31 . Papua New Guinea	45 286	782 F	860 F	1.7 %	1.9 %
32 . Samoa	283	122 F	129 F	43.1 %	45.6 %
33 . Solomon Islands	2 799	70 F	74 F	2.5 %	2.6 %
34 . Tonga	72	48 F	48 F	66.7 %	66.7 %
35 . Vanuatu	1 219	120 F	120 F	9.8 %	9.8 %
SUB-TOTAL	2 498 925	449 480	506 643	18.0 %	20.3 %
<b>DEVELOPED COUNTRIES</b>					
36 . Australia	768 230	45 874	50 600	6.0 %	6.6 %
37 . Japan	36 450 F	5 204 F	4 794 F	14.3 %	13.2 %
38 . New Zealand	26 799	3 909	3 372 F	14.6 %	12.6 %
SUB-TOTAL	831 479	54 987	58 766	6.6 %	7.1 %
ASIA & PACIFIC*	3 330 405	504 467	565 409	15.1 %	17.0 %
REST OF WORLD	9 737 261	999 650	966 681	10.3 %	9.9 %
WORLD	13 067 670	1 504 117	1 532 090	11.5 %	11.7 %

\*\* "Agricultural Land" as used in this publication refers to "Arable and Permanent Cropped Land", which excludes permanent meadows and pastures, fallow and resulting from shifting cultivation, and land under trees grown for food or timber. Double cropped areas are counted only once.

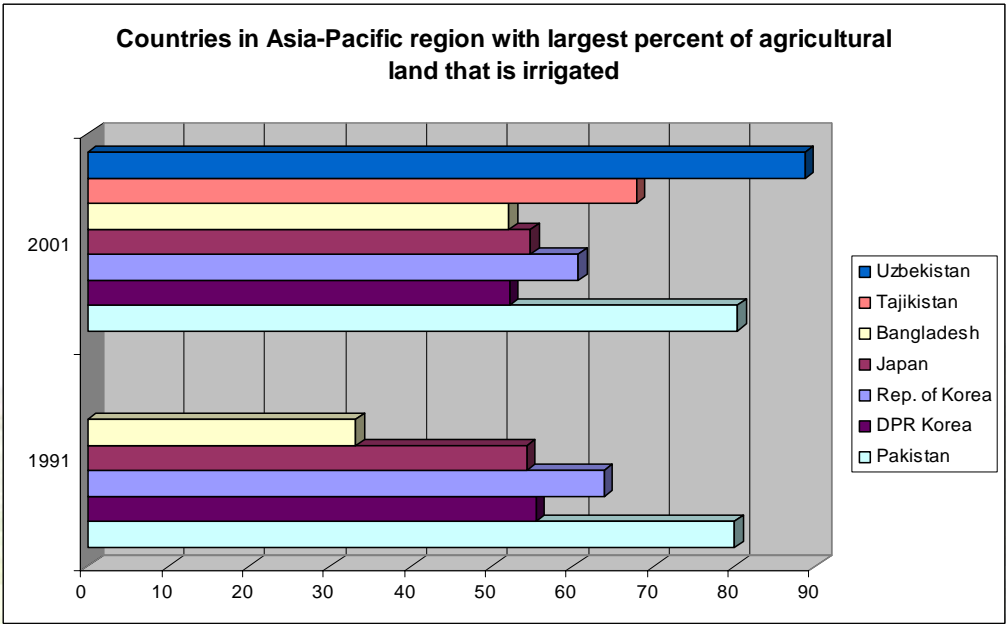
**Table 3. Agricultural population**

Unit: 1000

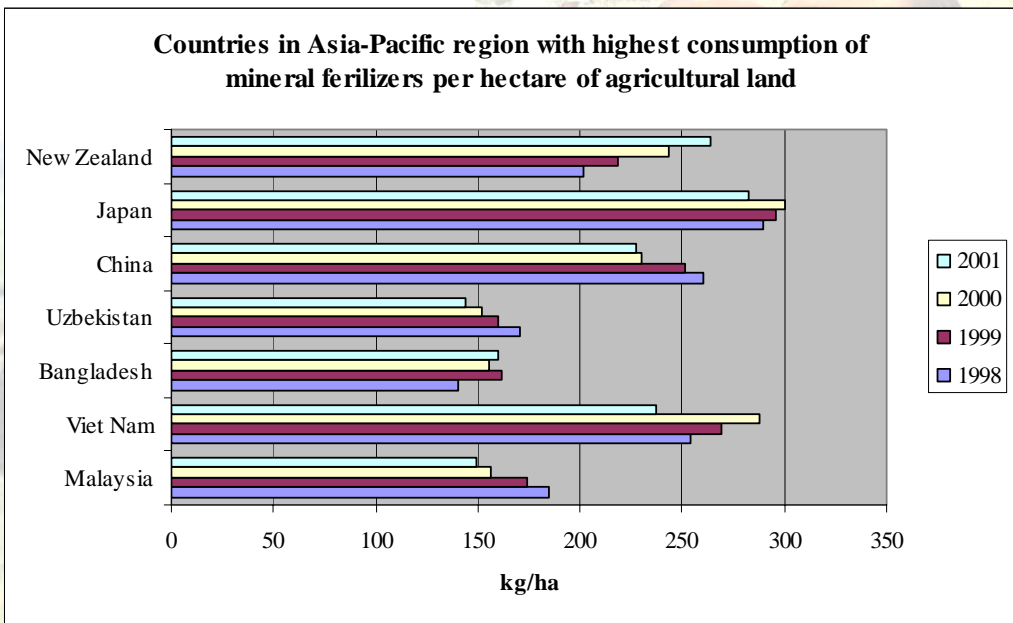
Country	Total Population		Agricultural Population		% Agricultural Population to Total	
	1991	2001	1991	2001	1991	2001
<b>DEVELOPING COUNTRIES</b>						
SOUTHEAST ASIA						
1 . Cambodia	9 976	13 441	7 328	9 364	73.5 %	69.7 %
2 . Indonesia	185 568	214 840	93 199	93 312	50.2 %	43.4 %
3 . Lao PDR	4 240	5 403	3 306	4 123	78.0 %	76.3 %
4 . Malaysia	18 281	22 633	4 587	3 841	25.1 %	17.0 %
5 . Myanmar	41 260	48 364	30 103	33 806	73.0 %	69.9 %
6 . Philippines	62 473	77 131	28 083	29 883	45.0 %	38.7 %
7 . Thailand	55 542	63 584	31 162	30 631	56.1 %	48.2 %
8 . Viet Nam	67 491	79 175	47 829	52 991	70.9 %	66.9 %
SOUTH ASIA						
9 . Bangladesh	112 710	140 369	72 413	76 722	64.2 %	54.7 %
10 . Bhutan	1 726	2 141	1 624	2 007	94.1 %	93.7 %
11 . India	861 266	1 025 096	497 793	545 254	57.8 %	53.2 %
12 . Maldives	222	300	82	78	36.9 %	26.0 %
13 . Nepal	18 575	23 593	17 360	21 929	93.5 %	92.9 %
14 . Pakistan	112 561	144 971	61 937	73 030	55.0 %	50.4 %
15 . Sri Lanka	17 250	19 104	8 435	8 788	48.9 %	46.0 %
CENTRAL ASIA						
16 . Kazakhstan	16 796	16 095		3 110		19.3 %
17 . Tajikistan	5 415	6 135		2 031		33.1 %
18 . Uzbekistan	20 979	25 257		6 814		27.0 %
OTHER ASIA						
19 . China	1 176 076	1 292 382	839 327	853 089	71.4 %	66.0 %
20 . DPR Korea	20 254	22 428	7 526	6 589	37.2 %	29.4 %
21 . Iran (Islamic Rep. of)	59 931	71 369	18 846	18 465	31.4 %	25.9 %
22 . Mongolia	2 266	2 559	706	603	31.2 %	23.6 %
23 . Rep. of Korea	43 284	47 069	6 588	3 876	15.2 %	8.2 %
PACIFIC ISLANDS						
24 . Cook Islands	18	20	8	7	44.4 %	35.0 %
25 . Fiji Islands	730	823	325	325	44.5 %	39.5 %
26 . Kiribati	73	84	22	22	30.1 %	26.2 %
27 . Marshall Islands	45	52	14	14	31.1 %	26.9 %
28 . Nauru	10	13	3	3	30.0 %	23.1 %
29 . Niue	2	2	1	1	50.0 %	50.0 %
30 . Palau	16	20	5	5	31.3 %	25.0 %
31 . Papua New Guinea	3 859	4 920	3 137	3 768	81.3 %	76.6 %
32 . Samoa	160	159	67	54	41.9 %	34.0 %
33 . Solomon Islands	329	463	251	337	76.3 %	72.8 %
34 . Tonga	96	99	40	33	41.7 %	33.3 %
35 . Vanuatu	154	202	66	73	42.9 %	36.1 %
SUB-TOTAL	2 919 634	3 370 296	1 782 173	1 884 978	61.0 %	55.9 %
<b>DEVELOPED COUNTRIES</b>						
36 . Australia	17 134	19 338	927	871	5.4 %	4.5 %
37 . Japan	123 967	127 335	8 157	4 646	6.6 %	3.6 %
38 . New Zealand	3 402	3 808	337	330	9.9 %	8.7 %
SUB-TOTAL	144 503	150 481	9 421	5 847	6.5 %	3.9 %
ASIA & PACIFIC*	3 064 139	3 520 778	1 791 595	1 890 825	58.5 %	53.7 %
REST OF WORLD	2 274 385	2 613 360	664 280	684 515	29.2 %	26.2 %
WORLD	5 338 524	6 134 138	2 455 875	2 575 340	46.0 %	42.0 %

**Table 4. Agricultural land and population**

Country	Ratio of Agricultural Land to Agricultural Population Unit: ha/caput		Average Annual % change	
	1991	2001	Agricultural Land 1991-2001	Agricultural Population 1991-2001
<b>DEVELOPING COUNTRIES</b>				
SOUTHEAST ASIA				
1 . Cambodia	0.52	0.41	0.01 %	2.48 %
2 . Indonesia	0.32	0.36	1.36 %	0.01 %
3 . Lao PDR	0.26	0.23	1.26 %	2.23 %
4 . Malaysia	1.57	1.97	0.34 %	-1.75 %
5 . Myanmar	0.33	0.31	0.48 %	1.17 %
6 . Philippines	0.35	0.36	0.94 %	0.62 %
7 . Thailand	0.67	0.60	-1.58 %	-0.17 %
8 . Viet Nam	0.13	0.16	2.38 %	1.01 %
SOUTH ASIA				
9 . Bangladesh	0.13	0.11	-0.15 %	0.57 %
10 . Bhutan	0.08	0.08	2.43 %	2.18 %
11 . India	0.34	0.31	0.02 %	0.92 %
12 . Maldives	0.10	0.12	0.97 %	-0.50 %
13 . Nepal	0.14	0.15	3.05 %	2.37 %
14 . Pakistan	0.34	0.30	0.52 %	1.68 %
15 . Sri Lanka	0.23	0.22	0.07 %	0.40 %
CENTRAL ASIA				
16 . Kazakhstan		6.97	-6.42 %	-2.67 %
17 . Tajikistan		0.52	0.84 %	-0.68 %
18 . Uzbekistan		0.71	-0.06 %	-0.54 %
OTHER ASIA				
19 . China	0.16	0.18	1.51 %	0.16 %
20 . DPR Korea	0.35	0.42	0.90 %	-1.34 %
21 . Iran (Islamic Rep. of)	0.95	0.90	-0.97 %	-0.21 %
22 . Mongolia	1.94	1.99	-1.47 %	-1.61 %
23 . Rep. of Korea	0.32	0.49	-1.09 %	-5.17 %
PACIFIC ISLANDS				
24 . Cook Islands	0.75	1.00	3.83 %	-1.45 %
25 . Fiji Islands	0.77	0.88	1.34 %	0.00 %
26 . Kiribati	1.77	1.77	0.00 %	-0.01 %
27 . Marshall Islands		0.71	0.00 %	0.00 %
28 . Nauru	0.00	0.00	0.00 %	0.00 %
29 . Niue	7.00	7.00	0.00 %	0.00 %
30 . Palau		1.20	0.00 %	0.01 %
31 . Papua New Guinea	0.25	0.23	1.10 %	1.84 %
32 . Samoa	1.82	2.39	0.47 %	-2.13 %
33 . Solomon Islands	0.28	0.22	0.48 %	3.01 %
34 . Tonga	1.20	1.45	0.00 %	-1.83 %
35 . Vanuatu	1.82	1.64	0.00 %	0.99 %
AVERAGE	0.25	0.27	1.20 %	0.52 %
<b>DEVELOPED COUNTRIES</b>				
36 . Australia	49.49	58.09	0.92 %	-0.63 %
37 . Japan	0.64	1.03	-0.84 %	-5.47 %
38 . New Zealand	11.60	10.22	-0.75 %	-0.21 %
AVERAGE	5.84	10.05	0.66 %	-4.66 %
ASIA & PACIFIC*	0.28	0.30	1.14 %	0.50 %
REST OF WORLD	1.50	1.41	-0.34 %	0.41 %
WORLD	0.61	0.59	0.15 %	0.47 %



## AGRICULTURAL INPUTS



**Table 5. Irrigation\***

Unit: 1000 ha

Country	1991	1998	1999	2000	2001	Annual Growth Rate 1991-2001
<b>DEVELOPING COUNTRIES</b>						
SOUTHEAST ASIA						
1 . Cambodia	250 F	270 F	270 F	270 F	270 F	0.5 %
2 . Indonesia	4 432	4 783	4 800 F	4 815 F	4 815 F	0.8 %
3 . Lao PDR	140 F	168 F	172 F	175 F	175 F	2.3 %
4 . Malaysia	340	365 F	365 F	365 F	365 F	0.6 %
5 . Myanmar	1 003	1 692	1 841	1 910	1 985	7.7 %
6 . Philippines	1 550 F	1 550 F	1 550 F	1 550 F	1 550 F	0.0 %
7 . Thailand	4 349	4 789	4 948	4 998	4 924	1.3 %
8 . Viet Nam	2 900 F	3 000 F	3 000 F	3 000 F	3 000 F	0.3 %
SOUTH ASIA						
9 . Bangladesh	3 027	3 850	3 985	4 187	4 421	3.6 %
10 . Bhutan	39 F	40 F	40 F	40 F	40 F	0.4 %
11 . India	47 430	54 570	54 600 F	54 800 F	54 800 F	1.5 %
12 . Maldives						
13 . Nepal	1 000 F	1 135 F	1 135 F	1 135 F	1 135 F	1.2 %
14 . Pakistan	16 750	18 000	17 950	18 090	17 820	0.8 %
15 . Sri Lanka	530 F	651	662	665	597	2.1 %
CENTRAL ASIA						
16 . Kazakhstan		2 332	2 350 F	2 350 F	2 350 F	0.4 %
17 . Tajikistan		719 F	719 F	719 F	719 F	0.0 %
18 . Uzbekistan		4 281 F	4 281 F	4 281 F	4 281 F	0.1 %
OTHER ASIA						
19 . China	48 384	52 878	53 740	54 402	54 831	1.3 %
20 . DPR Korea	1 440 F	1 460 F	1 460 F	1 460 F	1 460 F	0.1 %
21 . Iran (Islamic Rep. of)	7 000 F	7 562	7 562 F	7 500 F	7 500 F	0.8 %
22 . Mongolia	80 F	84 F	84 F	84 F	84 F	0.3 %
23 . Rep. of Korea	1 335	1 159	1 153	1 149	1 145 F	-1.6 %
PACIFIC ISLANDS						
24 . Cook Islands						
25 . Fiji Islands	1 F	3 F	3 F	3 F	3 F	5.1 %
26 . Kiribati						
27 . Marshall Islands						
28 . Nauru						
29 . Niue						
30 . Palau						
31 . Papua New Guinea						
32 . Samoa						
33 . Solomon Islands						
34 . Tonga						
35 . Vanuatu						
SUB-TOTAL	141 980	165 341	166 670	167 948	168 270	1.5 %
<b>DEVELOPED COUNTRIES</b>						
36 . Australia	2 012	2 365	2 251	2 385	2 385 F	1.4 %
37 . Japan	2 825	2 679	2 659	2 641	2 626	-0.7 %
38 . New Zealand	283 F	285 F	285 F	285 F	285 F	0.0 %
SUB-TOTAL	5 120	5 329	5 195	5 311	5 296	0.2 %
ASIA & PACIFIC*	147 100	170 670	171 865	173 259	173 566	1.5 %
REST OF WORLD	101 624	98 816	98 975	99 223	99 486	0.1 %
WORLD	248 724	269 486	270 840	272 482	273 052	1.0 %

\* refers to net irrigated area



**Table 6. Irrigated land as proportion of agricultural land**

Unit: 1000 ha

Country	Agricultural Land		Irrigated Land		% Irrigated Land to Agricultural Land	
	1991	2001	1991	2001	1991	2001
<b>DEVELOPING COUNTRIES</b>						
SOUTHEAST ASIA						
1 . Cambodia	3 800 F	3 807 F	250 F	270	6.6 %	7.1 %
2 . Indonesia	29 797	33 600 F	4 432	4 815 F	14.9 %	14.3 %
3 . Lao PDR	862 F	958 F	140 F	175 F	16.2 %	18.3 %
4 . Malaysia	7 197 F	7 585 F	340	365	4.7 %	4.8 %
5 . Myanmar	10 057 F	10 625	1 003	1 985	-	-
6 . Philippines	9 887 F	10 650 F	1 550 F	1 550 F	15.7 %	14.6 %
7 . Thailand	20 726 F	18 300 F	4 349	4 924 F	21.0 %	26.9 %
8 . Viet Nam	6 425	8 438 F	2 900 F	3 000 F	45.1 %	35.6 %
SOUTH ASIA						
9 . Bangladesh	9 137 F	8 485 F	3 027	4 421 F	33.1 %	52.1 %
10 . Bhutan	132 F	165 F	39 F	40 F	29.5 %	24.2 %
11 . India	169 340	169 900 F	47 430	54 800 F	28.0 %	32.3 %
12 . Maldives	8 F	9 F	-	-	-	-
13 . Nepal	2 356 F	3 192 F	1 000 F	1 135 F	42.4 %	35.6 %
14 . Pakistan	20 960 F	22 160 F	16 750	17 820	79.9 %	80.4 %
15 . Sri Lanka	1 903 F	1 911 F	530 F	597 F	27.9 %	31.2 %
CENTRAL ASIA						
16 . Kazakhstan		21 671 F		2 350		10.8 %
17 . Tajikistan		1 060 F		719 F		67.8 %
18 . Uzbekistan		4 830 F		4 281 F		88.6 %
OTHER ASIA						
19 . China	131 391 F	155 275 F	48 384	54 831	36.8 %	35.3 %
20 . DPR Korea	2 600 F	2 800 F	1 440 F	1 460	55.4 %	52.1 %
21 . Iran (Islamic Rep. of)	17 997 F	16 548 F	7 000 F	7 500 F	38.9 %	45.3 %
22 . Mongolia	1 369	1 200	80 F	84	5.8 %	7.0 %
23 . Rep. of Korea	2 091 F	1 889	1 335	1 145	63.8 %	60.6 %
PACIFIC ISLANDS						
24 . Cook Islands	6	7 F	0 F	0 F	0.0 %	0.0 %
25 . Fiji Islands	251	285	1 F	3	0.4 %	1.1 %
26 . Kiribati	39 F	39 F	0 F	0 F	0.0 %	0.0 %
27 . Marshall Islands		10 F		0 F		0.0 %
28 . Nauru	0 F	0 F				
29 . Niue	7 F	7 F	0 F	0 F	0.0 %	0.0 %
30 . Palau		6 F		0 F		0.0 %
31 . Papua New Guinea	782 F	860 F	0 F	0 F	0.0 %	0.0 %
32 . Samoa	122 F	129 F	0 F	0 F	0.0 %	0.0 %
33 . Solomon Islands	70 F	74 F	0 F	0 F	0.0 %	0.0 %
34 . Tonga	48 F	48 F	0 F	0 F	0.0 %	0.0 %
35 . Vanuatu	120 F	120 F	0 F	0 F	0.0 %	0.0 %
SUB-TOTAL	449 480	506 643	141 980	168 270	31.6 %	33.2 %
<b>DEVELOPED COUNTRIES</b>						
36 . Australia	45 874	50 600	2 012	2 385	4.4 %	4.7 %
37 . Japan	5 204 F	4 794 F	2 825	2 626	54.3 %	54.8 %
38 . New Zealand	3 909	3 372 F	283 F	285 F	7.2 %	8.5 %
SUB-TOTAL	54 987	58 766	5 120	5 296	9.3 %	9.0 %
ASIA & PACIFIC*	504 467	565 409	147 100	173 566	29.2 %	30.7 %
REST OF WORLD	999 650	966 681	101 624	99 486	10.2 %	10.3 %
WORLD	1 504 117	1 532 090	248 724	273 052	16.5 %	17.8 %

**Table 7. Mineral fertilizers : consumption**

Unit: 1000 MT (plant nutrient)

Country	1991	1998	1999	2000	2001	Annual Growth Rate 1991-2001
<b>DEVELOPING COUNTRIES</b>						
<b>SOUTHEAST ASIA</b>						
1 . Cambodia	5.7	7.6	.0	.0	.0	4.3 %
2 . Indonesia	2 400.1 *	2 727.7 *	2 524.5 *	2 493.5 *	2 523.6 *	0.4 %
3 . Lao PDR	2.6	4.6	9.9	6.0	12.3	15.5 %
4 . Malaysia	941.0 *	1 406.0 *	1 323.8 *	1 188.3	1 130.7	2.8 %
5 . Myanmar	83.1	171.8	163.1	205.7	164.2 *	9.6 %
6 . Philippines	447.8	628.4	743.8	734.6	781.4	5.1 %
7 . Thailand	962.1 *	1 637.0 *	1 763.0 *	1 560.9 *	1 717.0 *	4.8 %
8 . Viet Nam	781.9 *	1 856.9 *	2 057.6 *	2 267.0 *	1 999.2 *	12.7 %
<b>SOUTH ASIA</b>						
9 . Bangladesh	1 004.4	1 170.5 *	1 365.7	1 320.2	1 354.8	3.6 %
10 . Bhutan	.1	.0	.0	.0	.0	0.0 %
11 . India	12 728.1	16 797.5	18 056.7	16 702.3	17 359.7	4.2 %
12 . Maldives						%
13 . Nepal	81.1	121.5 *	94.4 *	73.0	70.3	0.2 %
14 . Pakistan	1 884.1	2 578.1	2 833.0	2 962.5	2 923.3	4.4 %
15 . Sri Lanka	177.2	232.9	259.1	247.0	234.4	3.1 %
<b>CENTRAL ASIA</b>						
16 . Kazakhstan		13.0 *	34.2	37.0	50.4 *	-25.5 %
17 . Tajikistan		36.9	10.6	8.9	12.1	-25.2 %
18 . Uzbekistan		824.4 *	774.8	731.2 *	693.3 *	3.3 %
<b>OTHER ASIA</b>						
19 . China	29 659.1	35 830.0 *	36 439.0 *	34 217.9 *	35 375.2 *	2.8 %
20 . DPR Korea	811.1 *	157.2 *	253.0 *	256.0 *	287.0 *	-11.9 %
21 . Iran (Islamic Rep. of)	1 149.0 *	1 268.0	1 330.4 *	1 393.6	1 320.1	2.4 %
22 . Mongolia	16.0 *	4.2	2.8	3.4	3.2	-4.9 %
23 . Rep. of Korea	927.7 *	867.0 *	821.1	783.3	716.7 *	-2.5 %
<b>PACIFIC ISLANDS</b>						
24 . Cook Islands						
25 . Fiji Islands	14.0 *	18.4 *	14.4 *	7.5 *	10.0 *	-3.5 %
26 . Kiribati						
27 . Marshall Islands						
28 . Nauru						
29 . Niue						
30 . Palau						
31 . Papua New Guinea	10.7 *	8.2 *	9.3 *	11.7 *	11.8 *	-1.6 %
32 . Samoa	.0	.0	1.3	4.9	4.9 *	92.3 %
33 . Solomon Islands						
34 . Tonga						
35 . Vanuatu						
<b>SUB-TOTAL</b>	<b>54 086.8</b>	<b>68 367.8</b>	<b>70 885.5</b>	<b>67 216.3</b>	<b>68 755.6</b>	<b>3.2 %</b>
<b>DEVELOPED COUNTRIES</b>						
36 . Australia	1 284.6 *	2 250.0 *	2 353.0 *	2 275.0 *	2 463.0 *	6.7 %
37 . Japan	1 752.0	1 418.6	1 438.7	1 452.3	1 354.0	-3.0 %
38 . New Zealand	438.5 *	661.5 *	716.0 *	812.7	889.2	5.2 %
<b>SUB-TOTAL</b>	<b>3 475.1</b>	<b>4 330.1</b>	<b>4 507.7</b>	<b>4 540.0</b>	<b>4 706.2</b>	<b>2.6 %</b>
<b>ASIA &amp; PACIFIC*</b>	<b>57 561.9</b>	<b>72 697.8</b>	<b>75 393.2</b>	<b>71 756.3</b>	<b>73 461.8</b>	<b>3.1 %</b>
<b>REST OF WORLD</b>	<b>77 044.5</b>	<b>65 469.2</b>	<b>64 908.3</b>	<b>63 442.0</b>	<b>64 267.9</b>	<b>-0.9 %</b>
<b>WORLD</b>	<b>134 606.4</b>	<b>138 167.1</b>	<b>140 301.5</b>	<b>135 198.3</b>	<b>137 729.7</b>	<b>1.1 %</b>

**Table 8. Mineral fertilizers : consumption per ha of agricultural land**

Unit: kg plant nutrient/ha

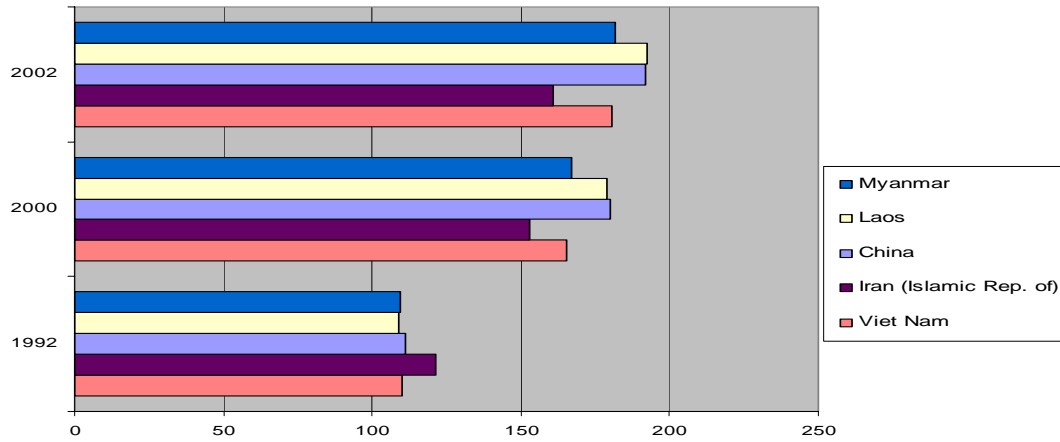
Country	1991	1998	1999	2000	2001
<b>DEVELOPING COUNTRIES</b>					
SOUTHEAST ASIA					
1 . Cambodia	1.5	2.0	.0	.0	.0
2 . Indonesia	80.5	85.9	77.1	74.2	75.1
3 . Lao PDR	3.0	4.9	10.4	6.3	12.8
4 . Malaysia	130.7	184.9	174.1	156.2	149.1
5 . Myanmar	8.3	16.9	15.9	19.6	15.5
6 . Philippines	45	60	70	69	73
7 . Thailand	46.4	89.5	96.3	85.3	93.8
8 . Viet Nam	121.7	254.5	269.0	288.0	236.9
SOUTH ASIA					
9 . Bangladesh	109.9	140.5	161.8	155.6	159.7
10 . Bhutan	0.8	0.0	0.0	0.0	0.0
11 . India	75.2	99.0	106.4	98.4	102.2
12 . Maldives	0.0	0.0	0.0	0.0	0.0
13 . Nepal	34	40	31	23	22
14 . Pakistan	89.9	117.3	129.5	134.9	131.9
15 . Sri Lanka	93.1	123.3	136.0	129.3	122.7
CENTRAL ASIA					
16 . Kazakhstan		0.5	1.6	1.7	2.3
17 . Tajikistan		35.8	10.2	8.4	11.4
18 . Uzbekistan		170.4	160.3	151.5	143.5
OTHER ASIA					
19 . China	225.7	259.9	251.4	230.2	227.8
20 . DPR Korea	312	56	90	91	103
21 . Iran (Islamic Rep. of)	63.8	67.4	72.8	85.4	79.8
22 . Mongolia	11.7	3.2	2.4	2.9	2.7
23 . Rep. of Korea	444	454	432	408	379
PACIFIC ISLANDS					
24 . Cook Islands	0.0	0.0	0.0	0.0	0.0
25 . Fiji Islands	55.8	64.6	50.5	26.3	35.1
26 . Kiribati	0.0	0.0	0.0	0.0	0.0
27 . Marshall Islands		0.0	0.0	0.0	0.0
28 . Nauru					
29 . Niue	0.0	0.0	0.0	0.0	0.0
30 . Palau		0.0	0.0	0.0	0.0
31 . Papua New Guinea	13.7	9.9	11.0	13.7	13.7
32 . Samoa	0.0	0.0	10.6	38.7	38.0
33 . Solomon Islands	0.0	0.0	0.0	0.0	0.0
34 . Tonga	0.0	0.0	0.0	0.0	0.0
35 . Vanuatu	0.0	0.0	0.0	0.0	0.0
SUB-TOTAL	120.3	139.5	143.0	134.8	135.7
<b>DEVELOPED COUNTRIES</b>					
36 . Australia	28.0	41.8	48.8	45.0	48.7
37 . Japan	336.7	289.2	295.7	300.7	282.4
38 . New Zealand	112.2	201.7	218.3	243.3	263.7
SUB-TOTAL	63.2	69.9	80.0	77.2	80.1
ASIA & PACIFIC*	114.1	131.7	136.6	128.7	129.9
REST OF WORLD	77.1	67.7	67.2	65.7	66.5
WORLD	89.5	91.0	92.4	88.7	89.9

**Table 9. Agricultural tractors : number in use**

Unit: Number

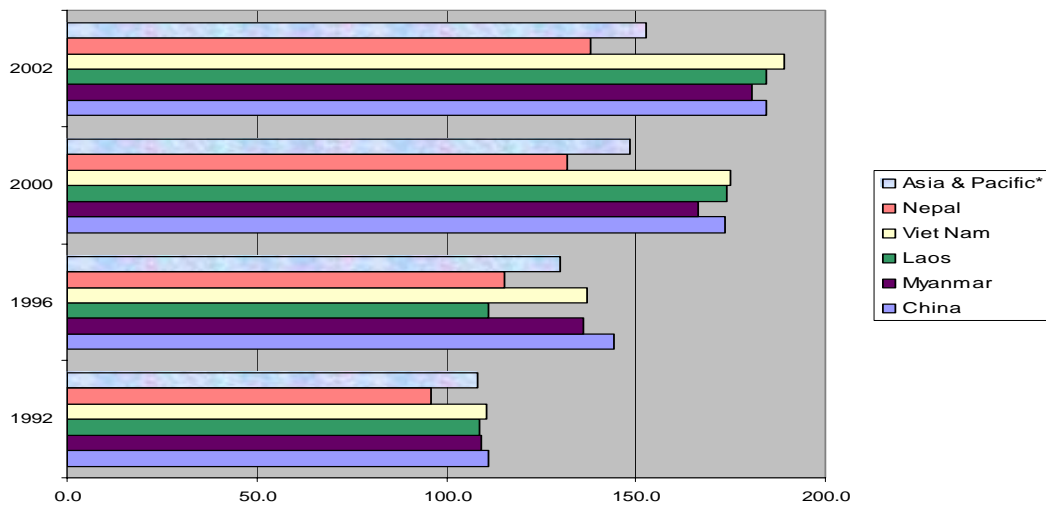
Country	1991	1998	1999	2000	2001	Annual Growth Rate 1991-2001
<b>DEVELOPING COUNTRIES</b>						
SOUTHEAST ASIA						
1 . Cambodia	1 190 F	1 540 F	1 855 F	1 855 F	1 900 F	5.6 %
2 . Indonesia	33 979	70 000 F	70 000 F	70 000 F	70 000 F	7.5 %
3 . Lao PDR	910 F	1 070 F	1 070 F	1 080 F	1 080 F	1.7 %
4 . Malaysia	29 000 F	43 300 F	43 300 F	43 300 F	43 300 F	4.0 %
5 . Myanmar	10 000	9 803	10 209	10 606	10 304	-0.1 %
6 . Philippines	11 000 F	11 500 F	11 500 F	11 500 F	11 500 F	0.2 %
7 . Thailand	65 010	220 000 F	220 000 F	220 000 F	220 000 F	13.7 %
8 . Viet Nam	35 375	122 958	145 850	162 746	163 000 F	17.6 %
SOUTH ASIA						
9 . Bangladesh	5 250 F	5 400 F	5 450 F	5 530 F	5 530 F	0.5 %
10 . Bhutan						%
11 . India	1 063 012	1 500 000 F	1 520 000 F	1 525 000 F	1 525 000 F	3.8 %
12 . Maldives						
13 . Nepal	4 500 F	4 600 F	4 600 F	4 600 F	4 600 F	0.1 %
14 . Pakistan	271 903 F	320 500 F	320 500 F	320 500 F	320 500 F	1.7 %
15 . Sri Lanka	6 300 F	7 356	8 000 F	8 000 F	8 000 F	3.4 %
CENTRAL ASIA						
16 . Kazakhstan		64 249	54 982	49 652	49 000 F	-18.2 %
17 . Tajikistan		30 000 F	30 000 F	30 000 F	30 000 F	-1.0 %
18 . Uzbekistan		170 000 F	170 000 F	170 000 F	170 000 F	-0.3 %
OTHER ASIA						
19 . China	795 713	738 530	798 510	989 143	1 112 617	2.8 %
20 . DPR Korea	70 000 F	70 000 F	70 000 F	70 000 F	70 000 F	0.0 %
21 . Iran (Islamic Rep. of)	220 000 F	230 000 *	233 000 F	237 000 F	237 000 F	0.8 %
22 . Mongolia	10 000 F	5 800 F	5 200 F	4 700	5 000	-7.1 %
23 . Rep. of Korea	52 973	157 888	176 146	191 631	201 089	14.6 %
PACIFIC ISLANDS						
24 . Cook Islands	180	165	165 F	165 F	165 F	-1.6 %
25 . Fiji Islands	6 952	7 000 F	7 000 F	7 000 F	7 000 F	0.0 %
26 . Kiribati	18 F	18 F	18 F	18 F	18 F	0.0 %
27 . Marshall Islands						
28 . Nauru						
29 . Niue	10 F	10 F	10 F	10 F	10 F	0.0 %
30 . Palau		5 F	5 F	5 F	5 F	0.0 %
31 . Papua New Guinea	1 140 F	1 160 F	1 160 F	1 160 F	1 160 F	0.2 %
32 . Samoa	76 F	76 F	80 F	84 F	89 F	1.2 %
33 . Solomon Islands	8 F	9 F	9 F	9 F	9 F	1.6 %
34 . Tonga	135 F	146 F	146 F	150 F	150 F	1.1 %
35 . Vanuatu	75 F	75 F	75 F	75 F	75 F	0.0 %
<b>SUB-TOTAL</b>	<b>2 694 709</b>	<b>3 793 158</b>	<b>3 908 840</b>	<b>4 135 519</b>	<b>4 268 101</b>	<b>3.8 %</b>
<b>DEVELOPED COUNTRIES</b>						
36 . Australia	316 000 F	315 000 F	315 000 F	315 000 F	315 000 F	0.0 %
37 . Japan	1 966 000	2 120 000	2 120 000	2 028 000	2 028 000 F	0.3 %
38 . New Zealand	75 000 F	76 000 F	76 000 F	76 000 F	76 000 F	0.1 %
<b>SUB-TOTAL</b>	<b>2 357 000</b>	<b>2 511 000</b>	<b>2 511 000</b>	<b>2 419 000</b>	<b>2 419 000</b>	<b>0.3 %</b>
<b>ASIA &amp; PACIFIC*</b>	<b>5 051 709</b>	<b>6 304 158</b>	<b>6 419 840</b>	<b>6 554 519</b>	<b>6 687 101</b>	<b>2.4 %</b>
<b>REST OF WORLD</b>	<b>21 196 380</b>	<b>20 249 380</b>	<b>20 145 210</b>	<b>20 135 640</b>	<b>20 166 900</b>	<b>-0.4 %</b>
<b>WORLD</b>	<b>26 248 090</b>	<b>26 553 540</b>	<b>26 565 050</b>	<b>26 690 160</b>	<b>26 854 000</b>	<b>0.2 %</b>

**Food Production Indices (1989 - 91 = 100) for countries in the Asia-Pacific region with indices greater than 157.2 (regional PIN) in 2002**



## PRODUCTION INDICES

**Agricultural production indices (1989 - 1991 = 100) for countries in Asia-Pacific region with larger percent increase than region (141%) between 1992 and 2002**



**Table 10. Agricultural production indices**

(1989-91 = 100, gross production of agricultural products)\*

Country	1992	1994	1996	1998	2000	2002
<b>DEVELOPING COUNTRIES</b>						
SOUTHEAST ASIA						
1 . Cambodia	100.9	101.9	127.4	133	151.6	142.4
2 . Indonesia	110.7	113.9	124.2	117.9	123.8	123.1
3 . Lao PDR	108.9	117.2	111.3	128.6	174.0	184.2
4 . Malaysia	106.8	115.6	120.6	118.0	120.6	129.8
5 . Myanmar	109.4	126.8	136.1	138.9	166.6	180.6
6 . Philippines	101.9	109.4	120.3	114.0	128.8	141.4
7 . Thailand	107.3	110.8	115.0	114.4	123.4	125.8
8 . Viet Nam	110.7	122.8	137.2	152.3	175.0	189.0
SOUTH ASIA						
9 . Bangladesh	103.5	100.3	109.4	114.4	136.9	138.2
10 . Bhutan	101.9	110.1	118.7	120.0	116.2	96.1
11 . India	105.2	112.2	119.7	124.9	130.6	128.9
12 . Maldives	108.4	118.6	117.4	127.1	147.3	148.8
13 . Nepal	96.1	104.7	115.5	120.8	132.0	138.2
14 . Pakistan	103.6	112.3	130.1	136.5	145.6	143.6
15 . Sri Lanka	96.5	112.5	105.7	113.3	120.8	118.1
CENTRAL ASIA						
16 . Kazakhstan	108.7	80.7	61.3	49.8	63.9	77.2
17 . Tajikistan	76.5	69.6	51.7	47.3	52.0	56.5
18 . Uzbekistan	98.4	101.2	93.2	98.7	98.4	102.8
OTHER ASIA						
19 . China	111.0	128.1	144.4	160.2	173.5	184.6
20 . DPR Korea	103.6	99.2	69.7	83.2	82.3	90.4
21 . Iran (Islamic Rep. of)	120.9	129.1	139.5	157.5	153.0	159.8
22 . Mongolia	92.7	77.4	91.2	91.1	103.2	92.6
23 . Rep. of Korea	110.7	112.2	120.0	124.3	131.2	130.2
PACIFIC ISLANDS						
24 . Cook Islands	87.8	76.1	80.5	103.0	96.9	96.9
25 . Fiji Islands	97.0	99.7	108.9	84.7	99.3	96.8
26 . Kiribati	108.1	109.1	127.2	133.1	126.5	130.5
27 . Marshall Islands	116.4	96.4	129.1	85.4	54.5	54.5
28 . Nauru	103.7	105.5	105.4	105.6	105.6	105.6
29 . Niue	97.5	100.7	106.8	106.8	106.8	106.8
30 . Palau						
31 . Papua New Guinea	105.4	108.2	115.2	117.7	128.9	120.3
32 . Samoa	78.1	91.0	90.6	97.4	101.5	104.3
33 . Solomon Islands	108.9	108.6	125.5	134.6	148.3	152.1
34 . Tonga	97.3	110.9	89.3	91.5	97.5	97.5
35 . Vanuatu	96.2	100.0	104.0	126.0	100.7	87.6
<b>DEVELOPED COUNTRIES</b>						
36 . Australia	105.4	98.7	118.0	125.5	128.8	110.9
37 . Japan	100.8	99.4	95.0	91.1	92.0	91.1
38 . New Zealand	103.2	110.5	114.0	120.7	121.8	127.8
ASIA & PACIFIC*	108.1	118.1	129.8	138.6	148.3	152.8
WORLD	103.5	107.2	113.9	118.8	124.7	127.2

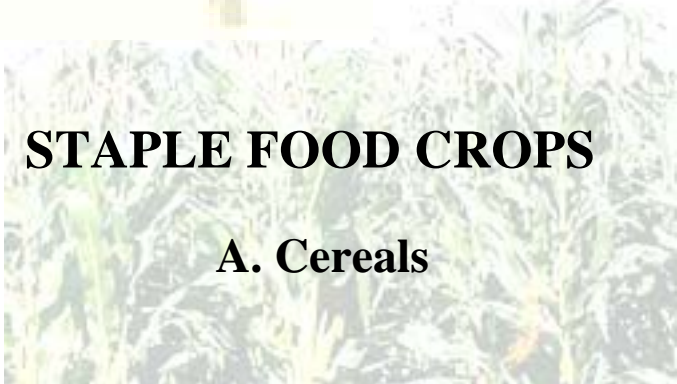
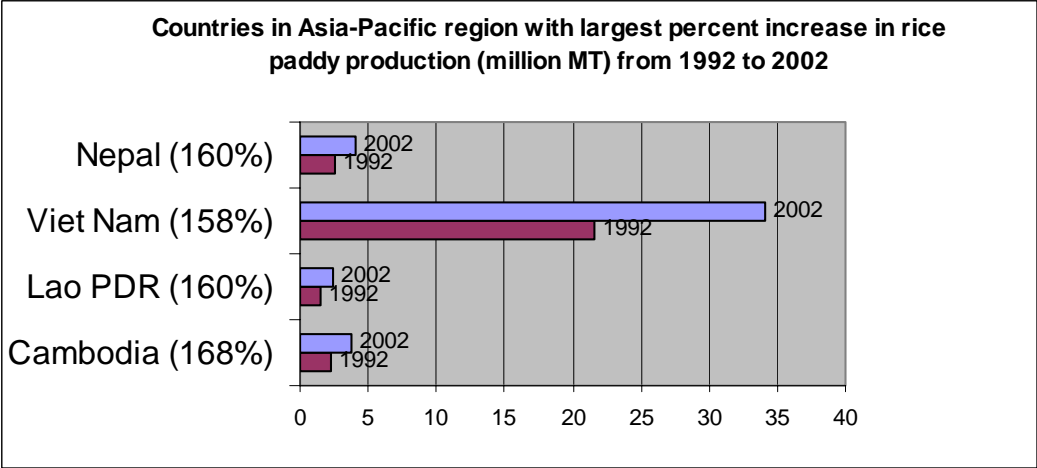
\* Including all crops and livestock products except fodder crops.

**Table 11. Food production indices**

(1989-91 = 100, gross production of food products)\*

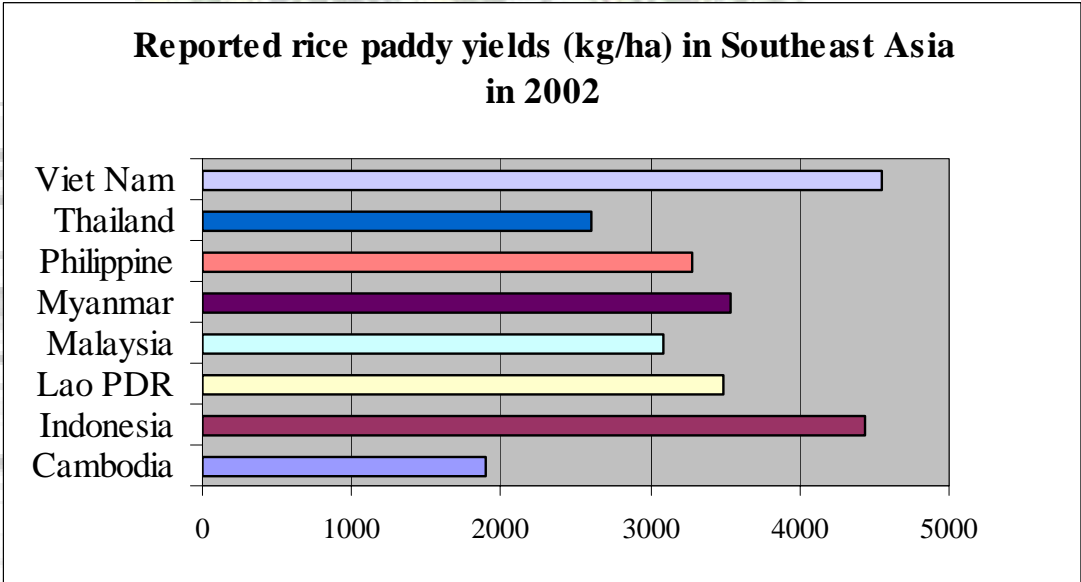
Country	1992	1994	1996	1998	2000	2002
<b>DEVELOPING COUNTRIES</b>						
SOUTHEAST ASIA						
1 . Cambodia	100.4	100.8	127.5	133	152.6	144.2
2 . Indonesia	111.2	114.3	124.6	117.8	124.0	123.9
3 . Lao PDR	109.0	120.8	112.3	130.4	178.9	192.2
4 . Malaysia	110.5	122.6	128.6	128.7	136.0	147.3
5 . Myanmar	109.3	127.5	135.9	138.2	167.0	181.5
6 . Philippines	101.7	110.2	121.9	115.4	131.0	144.1
7 . Thailand	106.0	109.4	113.2	112.5	121.3	123.6
8 . Viet Nam	110.1	121.4	134.4	148.0	165.5	180.5
SOUTH ASIA						
9 . Bangladesh	103.4	99.8	109.7	115.2	139.0	140.1
10 . Bhutan	101.9	110.1	118.7	120.0	116.2	96.1
11 . India	105.0	112.3	119.6	125.3	132.0	129.8
12 . Maldives	108.4	118.6	117.4	127.1	147.3	148.8
13 . Nepal	96.0	104.7	115.7	121.2	132.4	138.5
14 . Pakistan	106.2	117.2	138.0	146.5	154.0	153.2
15 . Sri Lanka	101.2	114.4	103.3	111.9	119.7	115.7
CENTRAL ASIA						
16 . Kazakhstan	110.4	81.4	62.1	50.8	65.2	79.6
17 . Tajikistan	80.7	71.8	55.0	47.9	59.5	63.3
18 . Uzbekistan	107.1	113.0	107.2	113.2	119.3	126.3
OTHER ASIA						
19 . China	111.4	131.0	148.1	165.9	180.1	191.7
20 . DPR Korea	103.9	99.3	69.1	83.5	82.4	90.9
21 . Iran (Islamic Rep. of)	121.6	129.8	139.6	158.3	152.7	161.0
22 . Mongolia	91.8	75.8	90.9	90.8	103.0	92.6
23 . Rep. of Korea	110.9	112.1	121.1	125.6	132.3	131.6
PACIFIC ISLANDS						
24 . Cook Islands	87.7	75.9	80.0	102.7	96.8	96.8
25 . Fiji Islands	97.0	99.8	109.1	84.9	99.4	96.9
26 . Kiribati	108.1	109.1	127.2	133.1	126.5	130.5
27 . Marshall Islands	116.4	96.4	129.1	85.4	54.5	54.5
28 . Nauru	103.7	105.5	105.4	105.6	105.6	105.6
29 . Niue	97.5	100.7	106.8	106.8	106.8	106.8
30 . Palau						
31 . Papua New Guinea	107.1	107.4	116.3	115.8	127.6	121.3
32 . Samoa	77.4	90.5	90.1	97.0	101.2	104.2
33 . Solomon Islands	108.9	108.6	125.6	134.8	148.4	152.3
34 . Tonga	97.3	110.9	89.4	91.6	97.6	97.5
35 . Vanuatu	96.2	100.0	104.0	125.9	100.6	87.6
<b>DEVELOPED COUNTRIES</b>						
36 . Australia	109.6	103.9	131.6	138.2	141.6	126.1
37 . Japan	101.1	99.8	95.5	91.7	92.6	91.6
38 . New Zealand	105.3	114.9	120.1	128.4	130.3	139.1
ASIA & PACIFIC*	108.6	119.9	132.1	142.0	152.2	157.2
WORLD	103.8	108	114.9	120.3	126.5	129.2

\* Including all products that are considered edible and contains nutrients



# STAPLE FOOD CROPS

## A. Cereals





**Table 12. Rice paddy : production**

Unit: 1000 MT

Country	1992	1999	2000	2001	2002	Annual Growth Rate 1992 - 2002
<b>DEVELOPING COUNTRIES</b>						
SOUTHEAST ASIA						
1 . Cambodia	2 221.0	4 040.9	4 026.1	4 099.0	3 740.0	6.5 %
2 . Indonesia	48 240.0	50 866.4	51 898.0	50 460.8	51 603.8	0.8 %
3 . Lao PDR	1 502.4	2 102.8	2 201.7	2 334.5	2 410.0 *	6.4 %
4 . Malaysia	2 012.7	2 036.6	2 140.8	2 094.0	2 091.0	-0.1 %
5 . Myanmar	14 840.4	20 126.0	21 323.9	21 900.0 *	21 900.0 *	3 %
6 . Philippines	9 513.0	11 786.6	12 389.4	12 954.9	13 270.7	3.1 %
7 . Thailand	19 917.0	24 172.0	25 608.0	26 954.1	25 945.0 *	3.4 %
8 . Viet Nam	21 590.3	31 393.8	32 529.5	31 970.1	34 063.5	4.8 %
SOUTH ASIA						
9 . Bangladesh	27 510.4	34 600.5	37 627.5	36 269.0	38 134.0 *	4.3 %
10 . Bhutan	43.0 F	50.0 F	50.0 F	50.0 F	44.3	1.0 %
11 . India	109 001.2	134 496.3	131 614.1	139 735.0	116 580.0	1.4 %
12 . Maldives						
13 . Nepal	2 584.9	3 834.3	4 216.5	4 164.7	4 130.0 *	4 %
14 . Pakistan	4 674.2	7 733.4	7 203.9	5 823.0	6 343.0 *	2.8 %
15 . Sri Lanka	2 339.7	2 857.1	2 859.9	2 694.5	2 794.0 *	1.4 %
CENTRAL ASIA						
16 . Kazakhstan	467.0	199.3	214.3	198.7	199.1	-6.8 %
17 . Tajikistan	20.2	47.3	82.0	39.8	29.0 *	9.8 %
18 . Uzbekistan	538.9	420.8	154.8	67.8	143.1	-15.3 %
OTHER ASIA						
19 . China	188 291.9	200 403.3	189 814.1	179 304.9	176 553.0	0.0 %
20 . Korea DPR	4 500.0	2 343.0	1 690.0	2 060.2	2 190.0	-7.1 %
21 . Iran (Islamic Rep. of)	2 360.1	2 348.2	1 971.5	1 990.2	2 115.0 *	-1.3 %
22 . Mongolia						
23 . Korea Republic of	7 303.0	7 032.8	7 124.8	7 453.0	6 650.0 *	0 %
PACIFIC ISLANDS						
24 . Cook Islands						
25 . Fiji Islands	22.5	17.3	13.2	14.6	14.7 F	-5.4 %
26 . Kiribati						
27 . Marshall Islands						
28 . Nauru						
29 . Niue						
30 . Palau						
31 . Papua New Guinea	0.6 *	0.7 *	0.7 *	0.8 F	0.8 F	2.2 %
32 . Samoa						
33 . Solomon Islands	0.0 F	4.5 *	4.8 F	5.2 F	5.2 F	33.9 %
34 . Tonga						
35 . Vanuatu						
SUB-TOTAL	469 494.4	542 914.0	536 759.2	532 638.8	510 949.1	1.4 %
<b>DEVELOPED COUNTRIES</b>						
36 . Australia	957.0	1 389.8	1 100.7	1 643.0	1 275.0	4.8 %
37 . Japan	13 216.0	11 468.8	11 863.0	11 320.0	11 111.0	-1.3 %
38 . New Zealand						
SUB-TOTAL	14 173.0	12 858.6	12 963.7	12 963.0	12 386.0	-0.8 %
ASIA & PACIFIC*	483 667.4	555 772.6	549 722.9	545 601.8	523 335.1	1.3 %
REST OF WORLD	44 546.8	55 510.3	52 881.9	52 185.4	52 945.0	2.1 %
WORLD	528 214.2	611 282.9	602 604.9	597 787.2	576 280.1	1.4 %

**Table 13. Rice paddy : yield**

Unit: kg/ha

Country	1992	1999	2000	2001	2002	Annual Growth Rate 1992 - 2002
<b>DEVELOPING COUNTRIES</b>						
SOUTHEAST ASIA						
1 . Cambodia	1 317.8	1 943.3	2 115.5	2 069.9	1 902.4	4.5 %
2 . Indonesia	4 344.7	4 251.9	4 400.8	4 387.9	4 432.8	0.1 %
3 . Lao PDR	2 655.5	2 930.4	3 060.6	3 126.1	3 492.8	3.2 %
4 . Malaysia	2 991.8	2 941.5	3 062.2	3 139.4	3 090.0	0.0 %
5 . Myanmar	2 935.1	3 240.5	3 383.4	3 532.3	3 532.3	1.7 %
6 . Philippines	2 938.8	2 946.8	3 068.1	3 186.6	3 279.7	1.1 %
7 . Thailand	2 174.4	2 424.5	2 623.5	2 698.1	2 597.1	1.9 %
8 . Viet Nam	3 334.2	4 101.8	4 243.2	4 271.5	4 550.7	2.9 %
SOUTH ASIA						
9 . Bangladesh	2 702.8	3 229.8	3 483.6	3 302.5	3 448.2	3.1 %
10 . Bhutan	1 653.9	1 666.7	1 666.7	1 666.7	2 331.6	1.7 %
11 . India	2 609.2	3 236.1	2 943.6	3 131.5	2 914.5	1.3 %
12 . Maldives						
13 . Nepal	2 048.1	2 472.2	2 702.8	2 745.4	2 666.7	2.4 %
14 . Pakistan	2 368.6	3 074.4	3 031.2	2 754.2	2 881.9	1.7 %
15 . Sri Lanka	3 054.4	3 281.0	3 437.4	3 522.0	3 827.4	2.0 %
CENTRAL ASIA						
16 . Kazakhstan	3 991.5	2 807.0	2 972.3	2 871.4	3 028.8	-1.3 %
17 . Tajikistan	2 018.4	2 709.9	4 115.4	2 796.3	2 900.0	7.1 %
18 . Uzbekistan	2 960.7	2 562.7	1 239.4	1 232.7	2 389.0	-6.0 %
OTHER ASIA						
19 . China	5 795.9	6 334.4	6 264.2	6 152.4	6 265.9	0.9 %
20 . Korea DPR	7 601.4	4 039.7	3 158.9	3 601.8	3 757.4	-6.7 %
21 . Iran (Islamic Rep. of)	3 959.7	3 999.4	3 689.6	3 866.1	3 845.5	-0.4 %
22 . Mongolia						
23 . Korea Republic of	6 312.0	6 596.1	6 644.0	6 881.0	6 315.3	1.0 %
PACIFIC ISLANDS						
24 . Cook Islands						
25 . Fiji Islands	2 153.0	2 763.3	2 497.6	2 248.0	2 261.5	-0.7 %
26 . Kiribati						
27 . Marshall Islands						
28 . Nauru						
29 . Niue						
30 . Palau						
31 . Papua New Guinea	1 937.5	1 857.1	2 000.0	2 000.0	2 285.7	1.3 %
32 . Samoa						
33 . Solomon Islands		3 996.5	4 000.0	4 000.0	4 000.0	0.3 %
34 . Tonga						
35 . Vanuatu						
AVERAGE	3 077.5	3 308.6	3 325.2	3 299.3	3 416.5	1.4 %
<b>DEVELOPED COUNTRIES</b>						
36 . Australia	8 417.0	9 161.5	8 257.3	9 282.5	8 500.0	0.9 %
37 . Japan	6 275.4	6 414.3	6 702.3	6 635.4	6 582.4	1.5 %
38 . New Zealand						
AVERAGE	7 346.2	7 787.9	7 479.8	7 959.0	7 541.2	1.1 %
ASIA & PACIFIC*	3 683.5	4 068.6	3 990.3	4 021.0	4 007.3	1.0 %
REST OF WORLD	2 792.3	3 322.7	3 286.1	3 357.0	3 199.1	1.8 %
WORLD	3 586.9	3 987.4	3 916.6	3 952.8	3 916.4	1.1 %

**Table 14. Rice paddy : area harvested**

Unit: 1000 ha

Country	1992	1999	2000	2001	2002	Annual Growth Rate 1992 - 2002
<b>DEVELOPING COUNTRIES</b>						
SOUTHEAST ASIA						
1 . Cambodia	1 685.4	2 079.4	1 903.2	1 980.3	1 966.0	1.9 %
2 . Indonesia	11 103.3	11 963.2	11 793.0	11 500.0	11 641.3	0.7 %
3 . Lao PDR	565.7	717.6	719.4	746.8	690.0 *	3.1 %
4 . Malaysia	672.8	692.4	699.1	667.0	676.7	-0.1 %
5 . Myanmar	5 056.2	6 210.8	6 302.5	6 200.0 *	6 200.0 *	1.6 %
6 . Philippines	3 237.0	3 999.8	4 038.1	4 065.4	4 046.3	2.0 %
7 . Thailand	9 159.7	9 969.9	9 761.1	9 989.9	9 990.0 *	1.4 %
8 . Viet Nam	6 475.4	7 653.6	7 666.3	7 484.6	7 485.4	1.8 %
SOUTH ASIA						
9 . Bangladesh	10 178.4	10 713.0	10 801.2	10 661.0	11 059.0 *	1.0 %
10 . Bhutan	26.0 F	30.0 F	30.0 F	30.0 F	19.0	-0.7 %
11 . India	41 775.0	41 561.7	44 712.0	44 622.0	40 000.0 *	0.1 %
12 . Maldives						
13 . Nepal	1 262.1	1 551.0	1 560.0	1 517.0	1 545.0 *	1.5 %
14 . Pakistan	1 973.4	2 515.4	2 376.6	2 114.2	2 201.0 *	1.0 %
15 . Sri Lanka	766.0	870.8	832.0	765.0	730.0 *	-0.6 %
CENTRAL ASIA						
16 . Kazakhstan	117.0	71.0	72.1	69.2	65.7	-5.6 %
17 . Tajikistan	10.0	17.5	19.9	14.2	10.0 *	2.6 %
18 . Uzbekistan	182.0	164.2	124.9	55.0	59.9	-9.9 %
OTHER ASIA						
19 . China	32 487.4	31 637.1	30 301.5	29 144.0	28 177.0 *	-0.8 %
20 . Korea DPR	592.0	580.0	535.0	572.0	582.9	-0.4 %
21 . Iran (Islamic Rep. of)	596.0	587.2	534.3	514.8	550.0 *	-0.9 %
22 . Mongolia						
23 . Korea Republic of	1 157.0	1 066.2	1 072.4	1 083.1	1 053.0 *	-0.7 %
PACIFIC ISLANDS						
24 . Cook Islands						
25 . Fiji Islands	10.4	6.3	5.3	6.5 F	6.5 F	-4.7 %
26 . Kiribati						
27 . Marshall Islands						
28 . Nauru						
29 . Niue						
30 . Palau						
31 . Papua New Guinea	.3 F	.4 F	.4 F	.4 F	.4 F	0.9 %
32 . Samoa						
33 . Solomon Islands	.0 F	1.1	1.2 F	1.3 F	1.3 F	33.5 %
34 . Tonga						
35 . Vanuatu						
<b>SUB-TOTAL</b>	<b>129 088.6</b>	<b>134 659.5</b>	<b>135 861.4</b>	<b>133 803.8</b>	<b>128 756.3</b>	<b>0.4 %</b>
<b>DEVELOPED COUNTRIES</b>						
36 . Australia	113.7	151.7	133.3	177.0	150.0	3.8 %
37 . Japan	2 106.0	1 788.0	1 770.0	1 706.0	1 688.0	-2.8 %
38 . New Zealand						
<b>SUB-TOTAL</b>	<b>2 219.7</b>	<b>1 939.7</b>	<b>1 903.3</b>	<b>1 883.0</b>	<b>1 838.0</b>	<b>-2.4 %</b>
<b>ASIA &amp; PACIFIC*</b>	<b>131 308.3</b>	<b>136 599.2</b>	<b>137 764.7</b>	<b>135 686.8</b>	<b>130 594.3</b>	<b>.3 %</b>
<b>REST OF WORLD</b>	<b>15 953.4</b>	<b>16 706.2</b>	<b>16 092.9</b>	<b>15 545.1</b>	<b>16 549.9</b>	<b>0.3 %</b>
<b>WORLD</b>	<b>147 261.7</b>	<b>153 305.4</b>	<b>153 857.6</b>	<b>151 231.9</b>	<b>147 144.2</b>	<b>0.3 %</b>

**Table 15. Wheat : production**

Unit: 1000 MT

Country	1992	1999	2000	2001	2002	Annual Growth Rate 1992 - 2002
<b>DEVELOPING COUNTRIES</b>						
SOUTHEAST ASIA						
1 . Cambodia						
2 . Indonesia						
3 . Lao PDR						
4 . Malaysia						
5 . Myanmar	143.3	117.2	93.6	103.0 F	103.0 F	-2.3 %
6 . Philippines						
7 . Thailand	0.7	0.8 F	0.8 *	0.8 *	0.8 *	1.9 %
8 . Viet Nam						
SOUTH ASIA						
9 . Bangladesh	1 065.1	1 908.0	1 840.0	1 673.0	1 606.0	5.7 %
10 . Bhutan	5.0	20.0 *	20.0 *	20.0 *	4.4	6.2 %
11 . India	55 689.5	71 287.5	76 368.9	69 680.9	71 814.3	2.8 %
12 . Maldives						%
13 . Nepal	762.0	1 086.5	1 183.5	1 157.9	1 258.1	5.0 %
14 . Pakistan	15 684.2	17 856.0	21 078.6	19 023.7	18 226.1	2.4 %
15 . Sri Lanka						
CENTRAL ASIA						
16 . Kazakhstan	18 285.0	11 241.9	9 073.5	12 706.8	12 700.0	-0.8 %
17 . Tajikistan	170.4	356.1	406.2	388.5	361.0 *	10.7 %
18 . Uzbekistan	964.0	3 601.8	3 521.7	3 786.0	4 956.0	17.8 %
OTHER ASIA						
19 . China	101 591.3	113 880.1	99 636.1	93 876.2	91 290.2	-0.7 %
20 . Korea DPR	123.0 *	97.0 *	50.0 *	123.9	130.0	-2.2 %
21 . Iran (Islamic Rep. of)	10 178.7	8 673.2	8 087.8	9 458.6	12 000.0 *	-0.8 %
22 . Mongolia	453.2	168.4	138.7	138.7	149.3	-11.8 %
23 . Korea Republic of	0.6	5.6	2.3	2.8	2.8 F	8.4 %
PACIFIC ISLANDS						
24 . Cook Islands						
25 . Fiji Islands						
26 . Kiribati						
27 . Marshall Islands						
28 . Nauru						
29 . Niue						
30 . Palau						
31 . Papua New Guinea						
32 . Samoa						
33 . Solomon Islands						
34 . Tonga						
35 . Vanuatu						
SUB-TOTAL	205 115.9	230 300.0	221 501.8	212 140.8	214 602.0	0.8 %
<b>DEVELOPED COUNTRIES</b>						
36 . Australia	14 738.7	24 757.0	22 108.0	24 854.0	9 385.0	2.6 %
37 . Japan	758.7	583.1	688.2	699.9	827.8	2.0 %
38 . New Zealand	191.0	320.0	326.0	364.0	355.0	6.2 %
SUB-TOTAL	15 688.4	25 660.1	23 122.2	25 917.9	10 567.8	2.7 %
ASIA & PACIFIC*	220 804.3	255 960.1	244 624.0	238 058.7	225 169.8	1.0 %
REST OF WORLD	344 354.1	331 827.4	341 325.7	352 426.7	347 709.2	0.4 %
WORLD	565 158.3	587 787.5	585 949.6	590 485.4	572 878.9	0.7 %

**Table 16. Wheat : yield**

Unit: kg/ha

Country	1992	1999	2000	2001	2002	Annual Growth Rate 1992 - 2002
<b>DEVELOPING COUNTRIES</b>						
SOUTHEAST ASIA						
1 . Cambodia						
2 . Indonesia						
3 . Lao PDR						
4 . Malaysia						
5 . Myanmar	974.2	1 112.4	1 166.7	981.0	981.0	1.4 %
6 . Philippines						
7 . Thailand	675.3	625.0	666.7	666.7	615.4	-0.3 %
8 . Viet Nam						
SOUTH ASIA						
9 . Bangladesh	1 853.4	2 162.7	2 210.4	2 164.3	2 164.4	2.1 %
10 . Bhutan	909.1	1 538.5	1 538.5	1 538.5	945.7	2.2 %
11 . India	2 394.0	2 590.1	2 778.5	2 708.1	2 770.4	1.7 %
12 . Maldives						%
13 . Nepal	1 333.8	1 695.5	1 793.1	1 806.3	1 885.9	3.8 %
14 . Pakistan	1 991.0	2 169.7	2 490.7	2 325.4	2 262.0	2.2 %
15 . Sri Lanka						
CENTRAL ASIA						
16 . Kazakhstan	1 332.4	1 286.8	902.8	1 180.3	1 089.5	1.7 %
17 . Tajikistan	928.6	1 092.4	1 183.9	1 190.5	1 244.8	3.2 %
18 . Uzbekistan	1 537.5	2 536.7	2 641.7	3 000.0	3 235.0	9.2 %
OTHER ASIA						
19 . China	3 331.2	3 946.6	3 738.2	3 806.2	3 884.7	1.4 %
20 . Korea DPR	1 366.7	2 020.8	847.5	2 162.8	2 063.5	3.5 %
21 . Iran (Islamic Rep. of)	1 468.7	1 830.2	1 585.6	1 703.3	1 904.8	2.0 %
22 . Mongolia	861.1	616.6	776.9	749.4	684.3	-2.0 %
23 . Korea Republic of	3 365.9	3 669.9	2 545.2	3 060.1	3 060.1	-1.5 %
PACIFIC ISLANDS						
24 . Cook Islands						
25 . Fiji Islands						
26 . Kiribati						
27 . Marshall Islands						
28 . Nauru						
29 . Niue						
30 . Palau						
31 . Papua New Guinea						
32 . Samoa						
33 . Solomon Islands						
34 . Tonga						
35 . Vanuatu						
AVERAGE	1 621.5	1 926.3	1 791.1	1 936.2	1 919.4	2.1 %
<b>DEVELOPED COUNTRIES</b>						
36 . Australia	1 781.2	2 006.6	1 820.9	2 143.1	850.8	-1.7 %
37 . Japan	3 537.1	3 454.4	3 760.7	3 554.6	4 001.0	1.1 %
38 . New Zealand	5 306.6	6 060.6	6 209.5	6 500.0	6 339.3	2.0 %
AVERAGE	3 541.6	3 840.5	3 930.4	4 065.9	3 730.4	1.3 %
ASIA & PACIFIC*	2 360.5	2 712.8	2 612.6	2 641.9	2 492.1	1.3 %
REST OF WORLD	2 671.8	2 788.6	2 801.2	2 825.5	2 891.7	1.0 %
WORLD	2 540.9	2 755.0	2 719.3	2 748.5	2 720.2	1.1 %

**Table 17. Wheat : area harvested**

Unit: 1000 ha

Country	1992	1999	2000	2001	2002	Annual Growth Rate 1992 - 2002
<b>DEVELOPING COUNTRIES</b>						
SOUTHEAST ASIA						
1 . Cambodia						
2 . Indonesia						
3 . Lao PDR						
4 . Malaysia						
5 . Myanmar	147.1	105.3	80.2	105.0 F	105.0 F	-3.6 %
6 . Philippines						
7 . Thailand	1.0	1.2 F	1.2 F	1.2 F	1.3 F	2.3 %
8 . Viet Nam						
SOUTH ASIA						
9 . Bangladesh	574.7	882.2	832.4	773.0	742.0	3.5 %
10 . Bhutan	5.5 F	13.0 *	13.0 *	13.0 *	4.6	4.0 %
11 . India	23 261.9	27 523.3	27 486.0	25 730.6	25 922.5	1.1 %
12 . Maldives						
13 . Nepal	571.3	640.8	660.0	641.0	667.1	1.1 %
14 . Pakistan	7 877.6	8 229.9	8 463.0	8 180.8	8 057.5	0.2 %
15 . Sri Lanka						
CENTRAL ASIA						
16 . Kazakhstan	13 722.9	8 736.3	10 050.1	10 766.1	11 656.5	-2.5 %
17 . Tajikistan	183.5	326.0	343.1	326.4	290.0 *	7.2 %
18 . Uzbekistan	627.0	1 419.9	1 333.1	1 262.0	1 532.0	7.8 %
OTHER ASIA						
19 . China	30 497.2	28 855.0	26 653.3	24 664.1	23 500.1 *	-2.1 %
20 . Korea DPR	90.0 F	48.0 *	59.0 *	57.3	63.0	-5.5 %
21 . Iran (Islamic Rep. of)	6 930.5	4 739.1	5 100.7	5 553.1	6 300.0 *	-2.7 %
22 . Mongolia	526.3	273.1	178.6	185.1	218.2	-10.0 %
23 . Korea Republic of	.2	1.5	.9	.9	.9 F	10.0 %
PACIFIC ISLANDS						
24 . Cook Islands						
25 . Fiji Islands						
26 . Kiribati						
27 . Marshall Islands						
28 . Nauru						
29 . Niue						
30 . Palau						
31 . Papua New Guinea						
32 . Samoa						
33 . Solomon Islands						
34 . Tonga						
35 . Vanuatu						
<b>SUB-TOTAL</b>	<b>85 016.5</b>	<b>81 794.7</b>	<b>81 254.7</b>	<b>78 259.6</b>	<b>79 060.7</b>	<b>-0.8 %</b>
<b>DEVELOPED COUNTRIES</b>						
36 . Australia	8 274.6	12 338.0	12 141.0	11 597.0	11 031.0	4.3 %
37 . Japan	214.5	168.8	183.0	196.9	206.9	0.8 %
38 . New Zealand	36.0 F	52.8	52.5	56.0	56.0	4.1 %
<b>SUB-TOTAL</b>	<b>8 525.1</b>	<b>12 559.6</b>	<b>12 376.5</b>	<b>11 849.9</b>	<b>11 293.9</b>	<b>4.3 %</b>
<b>ASIA &amp; PACIFIC*</b>	<b>93 541.7</b>	<b>94 354.3</b>	<b>93 631.2</b>	<b>90 109.5</b>	<b>90 354.6</b>	<b>-0.3 %</b>
<b>REST OF WORLD</b>	<b>128 887.2</b>	<b>118 995.9</b>	<b>121 848.0</b>	<b>124 732.0</b>	<b>120 244.2</b>	<b>-0.6 %</b>
<b>WORLD</b>	<b>222 428.8</b>	<b>213 350.1</b>	<b>215 479.2</b>	<b>214 841.5</b>	<b>210 598.8</b>	<b>-0.4 %</b>

**Table 18. Maize : production**

Unit: 1000 MT

Country	1992	1999	2000	2001	2002	Annual Growth Rate 1992 - 2002
<b>DEVELOPING COUNTRIES</b>						
SOUTHEAST ASIA						
1 . Cambodia	60.0	95.3	157.0	185.6	168.1	15.0 %
2 . Indonesia	7 995.5	9 204.0	9 677.0	9 347.2	9 277.3	3.3 %
3 . Lao PDR	58.7	96.1	117.0	111.9	113.0 F	10.2 %
4 . Malaysia	36.0 *	57.0 *	65.0 *	67.0 *	70.0 *	7.3 %
5 . Myanmar	208.3	349.1	364.6	524.0 *	660.0 *	10.2 %
6 . Philippines	4 619.0	4 584.6	4 511.1	4 525.0	4 319.3	-0.2 %
7 . Thailand	3 672.0	4 286.2	4 462.0	4 466.0	4 170.0	2.1 %
8 . Viet Nam	747.9	1 753.1	2 005.9	2 122.8	2 314.7	11.2 %
SOUTH ASIA						
9 . Bangladesh	2.7	4.0	10.0	10.0 F	10.0 F	16.6 %
10 . Bhutan	40.0	70.0 *	70.0 *	70.0 *	48.5	2.6 %
11 . India	9 992.1	11 509.6	12 043.2	13 301.9	10 570.0	2.7 %
12 . Maldives	.0 *	.0 F	.0 F	.0 F	.0 F	-18.8 %
13 . Nepal	1 290.5	1 685.9	1 414.9	1 484.1	1 510.8	2.3 %
14 . Pakistan	1 183.6	1 652.0	1 643.2	1 664.4	1 689.0 F	3.7 %
15 . Sri Lanka	28.8	31.5	31.1	28.8	28.8 F	-0.6 %
CENTRAL ASIA						
16 . Kazakhstan	370.0	197.6	248.8	320.4	435.2	1.5 %
17 . Tajikistan	32.3	35.7	37.8	42.0	35.0 *	3.5 %
18 . Uzbekistan	367.2	167.9	131.4	100.0 *	232.0 *	-9.0 %
OTHER ASIA						
19 . China	95 772.9	128 287.2	106 179.8	114 254.0	123 175.0	2.0 %
20 . Korea DPR	3 718.0	1 235.0	1 041.0	1 483.0	1 651.0	-9.6 %
21 . Iran (Islamic Rep. of)	200.0 F	1 155.7	1 119.7	1 064.2	1 200.0 F	19.6 %
22 . Mongolia						
23 . Korea Republic of	92.2	79.3	64.2	57.0	60.0 *	-3.9 %
PACIFIC ISLANDS						
24 . Cook Islands						
25 . Fiji Islands	1.0	1.3 F	1.3 F	1.3 F	1.3 F	3.3 %
26 . Kiribati						
27 . Marshall Islands						
28 . Nauru						
29 . Niue						
30 . Palau						
31 . Papua New Guinea	3.5 F	6.5 F	7.2 F	8.3 F	8.5 F	8.9 %
32 . Samoa						
33 . Solomon Islands						
34 . Tonga						
35 . Vanuatu	.7 F	.7 F	.7 F	.7 F	.7 F	0.4 %
SUB-TOTAL	130 492.8	166 545.3	145 403.8	155 239.5	161 748.0	2.0 %
<b>DEVELOPED COUNTRIES</b>						
36 . Australia	269.0	338.0	406.0	345.0	521.0	7.6 %
37 . Japan	.7 F	.2 F	.2 F	.2 F	.2 F	-12.4 %
38 . New Zealand	163.8	197.0	181.0	177.0	156.6	1.7 %
SUB-TOTAL	433.5	535.2	587.2	522.2	677.7	5.6 %
ASIA & PACIFIC*	130 926.3	167 080.5	145 991.0	155 761.7	162 425.8	2.0 %
REST OF WORLD	402 599.8	440 293.8	446 305.7	458 705.6	440 163.5	1.9 %
WORLD	533 526.1	607 374.2	592 296.7	614 467.2	602 589.2	1.9 %

**Table 19. Maize : yield**

Unit: kg/ha

Country	1992	1999	2000	2001	2002	Annual Growth Rate 1992 - 2002
<b>DEVELOPING COUNTRIES</b>						
SOUTHEAST ASIA						
1 . Cambodia	1 250.0	1 594.8	2 734.5	2 761.2	2 512.1	9.7 %
2 . Indonesia	2 203.0	2 662.9	2 764.9	2 844.6	2 818.5	3.1 %
3 . Lao PDR	1 826.6	2 359.7	2 387.8	2 550.0	2 511.1	4.1 %
4 . Malaysia	1 714.3	2 111.1	2 407.4	3 045.5	3 043.5	5.2 %
5 . Myanmar	1 518.6	1 716.3	1 731.3	2 096.0	2 135.9	2.7 %
6 . Philippines	1 326.5	1 735.1	1 797.0	1 819.8	1 803.1	2.8 %
7 . Thailand	2 970.9	3 554.3	3 693.2	3 591.0	3 677.3	2.7 %
8 . Viet Nam	1 564.6	2 534.1	2 747.1	2 920.4	2 856.2	5.7 %
SOUTH ASIA						
9 . Bangladesh	931.9	1 234.6	2 059.7	2 000.0	2 000.0	9.3 %
10 . Bhutan	1 000.0	1 555.6	1 555.6	1 555.6	1 564.5	3.8 %
11 . India	1 675.8	1 792.2	1 821.6	2 017.5	1 704.8	1.8 %
12 . Maldives	1 000.0					
13 . Nepal	1 664.7	2 101.4	1 727.5	1 800.0	1 829.1	1.5 %
14 . Pakistan	1 364.4	1 717.8	1 740.7	1 767.6	1 768.6	2.8 %
15 . Sri Lanka	1 039.0	1 089.7	1 083.9	1 118.2	1 118.2	1.3 %
CENTRAL ASIA						
16 . Kazakhstan	3 140.9	3 016.8	3 335.1	3 712.6	4 135.0	4.1 %
17 . Tajikistan	2 961.3	3 035.8	3 163.4	4 666.0	2 692.3	3.4 %
18 . Uzbekistan	3 722.6	2 950.8	2 556.4	2 631.6	5 948.7	-0.4 %
OTHER ASIA						
19 . China	4 534.7	4 945.8	4 599.2	4 699.8	5 021.8	0.2 %
20 . Korea DPR	5 773.3	2 147.8	2 098.8	2 988.1	3 326.0	-6.9 %
21 . Iran (Islamic Rep. of)	4 444.4	6 200.3	6 165.6	6 161.3	6 000.0	3.5 %
22 . Mongolia						
23 . Korea Republic of	4 390.6	3 940.3	4 061.6	4 011.8	4 285.7	-0.4 %
PACIFIC ISLANDS						
24 . Cook Islands						
25 . Fiji Islands	2 161.4	2 549.0	2 549.0	2 549.0	2 549.0	4.7 %
26 . Kiribati						
27 . Marshall Islands						
28 . Nauru						
29 . Niue						
30 . Palau						
31 . Papua New Guinea	2 916.7	5 416.7	5 538.5	5 533.3	5 666.7	7.9 %
32 . Samoa						
33 . Solomon Islands						
34 . Tonga						
35 . Vanuatu	507.7	538.5	538.5	538.5	538.5	0.4 %
<b>AVERAGE</b>	<b>2 304.2</b>	<b>2 500.1</b>	<b>2 594.3</b>	<b>2 775.2</b>	<b>2 860.3</b>	<b>2.3 %</b>
<b>DEVELOPED COUNTRIES</b>						
36 . Australia	5 172.1	5 121.2	4 936.0	4 600.0	5 602.2	0.6 %
37 . Japan	2 518.0	2 400.0	2 465.8	2 465.8	2 465.8	-0.2 %
38 . New Zealand	9 119.6	10 130.6	10 226.0	10 411.8	10 436.6	1.5 %
<b>AVERAGE</b>	<b>5 603.2</b>	<b>5 883.9</b>	<b>5 875.9</b>	<b>5 825.8</b>	<b>6 168.2</b>	<b>1.0 %</b>
<b>ASIA &amp; PACIFIC*</b>	<b>3 368.3</b>	<b>3 838.0</b>	<b>3 581.2</b>	<b>3 727.8</b>	<b>3 902.1</b>	<b>1.0 %</b>
<b>REST OF WORLD</b>	<b>4 101.8</b>	<b>4 621.2</b>	<b>4 578.6</b>	<b>4 713.8</b>	<b>4 531.7</b>	<b>2.0 %</b>
<b>WORLD</b>	<b>3 893.7</b>	<b>4 375.6</b>	<b>4 284.5</b>	<b>4 417.6</b>	<b>4 342.8</b>	<b>1.7 %</b>



**Table 20. Maize : area harvested**

Unit: 1000 ha

Country	1992	1999	2000	2001	2002	Annual Growth Rate 1992 - 2002
<b>DEVELOPING COUNTRIES</b>						
SOUTHEAST ASIA						
1 . Cambodia	48.0	59.7	57.4	67.2	66.9	4.8 %
2 . Indonesia	3 629.3	3 456.4	3 500.0	3 285.9	3 291.6	0.2 %
3 . Lao PDR	32.1	40.7	49.0	43.9	45.0 F	5.8 %
4 . Malaysia	21.0 *	27.0 *	27.0 *	22.0 *	23.0 *	2.0 %
5 . Myanmar	137.2	203.4	210.6	250.0 *	309.0 *	7.4 %
6 . Philippines	3 482.0	2 642.2	2 510.3	2 486.6	2 395.5	-2.9 %
7 . Thailand	1 236.0	1 205.9	1 208.2	1 243.7	1 134.0 *	-0.7 %
8 . Viet Nam	478.0	691.8	730.2	726.9	810.4	5.2 %
SOUTH ASIA						
9 . Bangladesh	2.9	3.2	4.9	5.0 F	5.0 F	6.7 %
10 . Bhutan	40.0 F	45.0 *	45.0 *	45.0 *	31.0	-1.2 %
11 . India	5 962.5	6 422.1	6 611.3	6 593.2	6 200.0 *	0.9 %
12 . Maldives	.0 F	.0 F	.0 F	.0 F	.0 F	-18.8 %
13 . Nepal	775.2	802.3	819.0	824.5	826.0	0.8 %
14 . Pakistan	867.5	961.7	944.0	941.6	955.0 F	0.9 %
15 . Sri Lanka	27.7	28.9	28.6	25.7	25.7 F	-1.9 %
CENTRAL ASIA						
16 . Kazakhstan	117.8	65.5	74.6	86.3	105.2	-2.5 %
17 . Tajikistan	10.9	11.8	11.9	9.0	13.0 *	0.1 %
18 . Uzbekistan	98.6	56.9	51.4	38.0 *	39.0 *	-8.7 %
OTHER ASIA						
19 . China	21 120.0	25 938.9	23 086.4	24 310.7	24 528.0 *	1.8 %
20 . Korea DPR	644.0	575.0	496.0	496.3	496.4	-2.9 %
21 . Iran (Islamic Rep. of)	45.0 F	186.4	181.6	172.7	200.0 F	15.5 %
22 . Mongolia						
23 . Korea Republic of	21.0 *	20.1	15.8	14.2	14.0 *	-3.5 %
PACIFIC ISLANDS						
24 . Cook Islands						
25 . Fiji Islands	.4	.5 F	.5 F	.5 F	.5 F	-1.4 %
26 . Kiribati						
27 . Marshall Islands						
28 . Nauru						
29 . Niue						
30 . Palau						
31 . Papua New Guinea	1.2 F	1.2 F	1.3 F	1.5 F	1.5 F	1.0 %
32 . Samoa						
33 . Solomon Islands						
34 . Tonga						
35 . Vanuatu	1.3 F	1.3 F	1.3 F	1.3 F	1.3 F	0.0 %
<b>SUB-TOTAL</b>	<b>38 799.8</b>	<b>43 447.9</b>	<b>40 666.4</b>	<b>41 691.7</b>	<b>41 517.0</b>	<b>1.1 %</b>
<b>DEVELOPED COUNTRIES</b>						
36 . Australia	52.0	66.0	82.3	75.0	93.0	7.0 %
37 . Japan	.3	.1	.1	.1 F	.1 F	-12.2 %
38 . New Zealand	18.0	19.4	17.7	17.0	15.0	0.2 %
<b>SUB-TOTAL</b>	<b>70.2</b>	<b>85.5</b>	<b>100.0</b>	<b>92.1</b>	<b>108.1</b>	<b>5.5 %</b>
<b>ASIA &amp; PACIFIC*</b>	<b>38 870.0</b>	<b>43 533.5</b>	<b>40 766.4</b>	<b>41 783.7</b>	<b>41 625.1</b>	<b>1.1 %</b>
<b>REST OF WORLD</b>	<b>98 152.6</b>	<b>95 276.8</b>	<b>97 475.6</b>	<b>97 311.0</b>	<b>97 130.3</b>	<b>0.0 %</b>
<b>WORLD</b>	<b>137 022.6</b>	<b>138 810.3</b>	<b>138 242.0</b>	<b>139 094.7</b>	<b>138 755.4</b>	<b>0.3 %</b>

**Table 21. Millet : production**

Unit: 1000 MT

Country	1992	1999	2000	2001	2002	Annual Growth Rate 1992 - 2002
<b>DEVELOPING COUNTRIES</b>						
SOUTHEAST ASIA						
1 . Cambodia						
2 . Indonesia						
3 . Lao PDR						
4 . Malaysia						
5 . Myanmar	137.3	168.8	168.9	170.0 F	170.0 F	2.7 %
6 . Philippines						
7 . Thailand						
8 . Viet Nam						
SOUTH ASIA						
9 . Bangladesh	65.4	55.0	55.0	57.0 F	57.0 F	-1.2 %
10 . Bhutan	6.5 F	7.0 F	7.0 F	7.0 F	3.8	-2.4 %
11 . India	12 280.9	8 689.9	10 077.3	11 433.5	6 150.0	-2.2 %
12 . Maldives	.0 *	.0	.0	.0 F	.0 F	2.4 %
13 . Nepal	236.8	291.4	269.9	282.9	282.6	1.2 %
14 . Pakistan	203.1	155.6	199.0	216.4	180.0 *	1.0 %
15 . Sri Lanka	5.3	4.9	5.0	4.3	4.3 F	-3.9 %
CENTRAL ASIA						
16 . Kazakhstan	447.0	43.8	62.3	65.3	39.2	-16.4 %
17 . Tajikistan						
18 . Uzbekistan	.5	3.5 *	2.7 *	1.6 *	3.6 *	20.7 %
OTHER ASIA						
19 . China	3 317.6	2 318.6	2 125.7	1 966.8	2 070.8 *	-6.6 %
20 . Korea DPR	50.0 F	20.0 F	45.0 F	45.0 F	45.0 F	1.9 %
21 . Iran (Islamic Rep. of)	7.0 F	10.0 F	9.0 F	9.0 F	8.0 F	4.5 %
22 . Mongolia						
23 . Korea Republic of	1.7	1.6	1.8	1.5 F	1.5 F	-1.8 %
PACIFIC ISLANDS						
24 . Cook Islands						
25 . Fiji Islands						
26 . Kiribati						
27 . Marshall Islands						
28 . Nauru						
29 . Niue						
30 . Palau						
31 . Papua New Guinea						
32 . Samoa						
33 . Solomon Islands						
34 . Tonga						
35 . Vanuatu						
SUB-TOTAL	16 759.0	11 770.2	13 028.6	14 260.2	9 015.7	-3.1 %
<b>DEVELOPED COUNTRIES</b>						
36 . Australia	43.0	43.0 F	56.8	60.0 F	63.0 F	8.5 %
37 . Japan	.6 F	.3	.3 F	.3 F	.3 F	-10.3 %
38 . New Zealand						
SUB-TOTAL	43.6	43.3	57.1	60.3	63.3	8.2 %
ASIA & PACIFIC*	16 802.6	11 813.5	13 085.7	14 320.5	9 079.0	-3.0 %
REST OF WORLD	12 804.5	15 440.0	14 605.3	14 809.1	14 259.3	1.7 %
WORLD	29 607.1	27 253.5	27 690.9	29 129.6	23 338.3	-.6 %

**Table 22. Millet : yield**

Unit: kg/ha

Country	1992	1999	2000	2001	2002	Annual Growth Rate 1992 - 2002
<b>DEVELOPING COUNTRIES</b>						
SOUTHEAST ASIA						
1 . Cambodia						
2 . Indonesia						
3 . Lao PDR						
4 . Malaysia						
5 . Myanmar	674.8	671.3	675.6	680.0	680.0	0.2 %
6 . Philippines						
7 . Thailand						
8 . Viet Nam						
SOUTH ASIA						
9 . Bangladesh	742.3	750.9	750.9	712.5	712.5	-0.1 %
10 . Bhutan	833.3	875.0	875.0	875.0	612.9	-1.4 %
11 . India	846.7	727.7	774.5	912.7	683.3	0.6 %
12 . Maldives	1 000.0	1 000.0	800.0	1 000.0	1 000.0	-1.8 %
13 . Nepal	1 173.4	1 103.9	1 024.6	1 088.4	1 094.7	-0.2 %
14 . Pakistan	416.8	497.1	510.8	518.8	450.0	1.6 %
15 . Sri Lanka	605.8	739.9	737.4	742.2	742.2	1.4 %
CENTRAL ASIA						
16 . Kazakhstan	522.7	441.5	477.8	629.1	735.4	3.3 %
17 . Tajikistan						
18 . Uzbekistan	610.4	3 500.0	2 700.0	3 200.0	7 200.0	21.7 %
OTHER ASIA						
19 . China	1 776.3	1 744.2	1 700.2	1 712.3	1 881.8	-1.6 %
20 . Korea DPR	1 111.1	1 000.0	1 000.0	1 000.0	1 000.0	-0.2 %
21 . Iran (Islamic Rep. of)	1 400.0	833.3	818.2	818.2	800.0	-5.7 %
22 . Mongolia						
23 . Korea Republic of	1 384.6	965.9	1 231.6	1 176.5	1 176.5	-1.2 %
PACIFIC ISLANDS						
24 . Cook Islands						
25 . Fiji Islands						
26 . Kiribati						
27 . Marshall Islands						
28 . Nauru						
29 . Niue						
30 . Palau						
31 . Papua New Guinea						
32 . Samoa						
33 . Solomon Islands						
34 . Tonga						
35 . Vanuatu						
AVERAGE	935.6	1 060.8	1 005.5	1 076.1	1 340.7	2.1 %
<b>DEVELOPED COUNTRIES</b>						
36 . Australia	1 253.6	1 228.6	1 457.4	1 500.0	1 536.6	5.3 %
37 . Japan	1 714.3	1 000.0	1 000.0	1 000.0	1 000.0	-7.3 %
38 . New Zealand						
AVERAGE	1 483.9	1 114.3	1 228.7	1 250.0	1 268.3	-1.6 %
ASIA & PACIFIC*	917.6	822.8	845.2	961.2	806.9	-0.1 %
REST OF WORLD	668.3	712.0	675.2	669.0	643.9	0.3 %
WORLD	790.1	756.2	746.1	786.6	698.8	-0.1 %

**Table 23. Millet : area harvested**

Unit: 1000 ha

Country	1992	1999	2000	2001	2002	Annual Growth Rate 1992 - 2002
<b>DEVELOPING COUNTRIES</b>						
SOUTHEAST ASIA						
1 . Cambodia						
2 . Indonesia						
3 . Lao PDR						
4 . Malaysia						
5 . Myanmar	203.4	251.4	250.0	250.0 F	250.0 F	2.5 %
6 . Philippines						
7 . Thailand						
8 . Viet Nam						
SOUTH ASIA						
9 . Bangladesh	88.1	73.2	73.2	80.0 F	80.0 F	-1.1 %
10 . Bhutan	7.8 F	8.0 F	8.0 F	8.0 F	6.2	-1.0 %
11 . India	14 505.2	11 942.4	13 012.2	12 527.2	9 000.0 *	-2.7 %
12 . Maldives	.0 F	.0	.0 F	.0 F	.0 F	4.2 %
13 . Nepal	201.8	264.0	263.5	259.9	258.1	1.4 %
14 . Pakistan	487.3	313.0	389.6	417.1	400.0 *	-0.6 %
15 . Sri Lanka	8.7	6.7	6.7	5.7	5.7 F	-5.3 %
CENTRAL ASIA						
16 . Kazakhstan	855.2	99.2	130.4	103.8	53.3	-19.0 %
17 . Tajikistan						
18 . Uzbekistan	.8	1.0 *	1.0 *	.5 *	.5 *	-0.9 %
OTHER ASIA						
19 . China	1 867.7	1 329.4	1 250.3	1 148.6	1 100.4 *	-5.1 %
20 . Korea DPR	45.0 F	20.0 F	45.0 *	45.0 F	45.0 F	2.1 %
21 . Iran (Islamic Rep. of)	5.0 F	12.0 F	11.0 F	11.0 F	10.0 F	10.8 %
22 . Mongolia						
23 . Korea Republic of	1.2	1.7	1.4	1.3	1.3 F	-0.5 %
PACIFIC ISLANDS						
24 . Cook Islands						
25 . Fiji Islands						
26 . Kiribati						
27 . Marshall Islands						
28 . Nauru						
29 . Niue						
30 . Palau						
31 . Papua New Guinea						
32 . Samoa						
33 . Solomon Islands						
34 . Tonga						
35 . Vanuatu						
<b>SUB-TOTAL</b>	<b>18 277.3</b>	<b>14 321.9</b>	<b>15 442.3</b>	<b>14 858.1</b>	<b>11 210.6</b>	<b>-3.0 %</b>
<b>DEVELOPED COUNTRIES</b>						
36 . Australia	34.3	35.0 F	39.0	40.0 F	41.0 F	3.1 %
37 . Japan	.4 F	.3	.3 F	.3 F	.3 F	-3.3 %
38 . New Zealand						
<b>SUB-TOTAL</b>	<b>34.6</b>	<b>35.3</b>	<b>39.3</b>	<b>40.3</b>	<b>41.3</b>	<b>3.0 %</b>
<b>ASIA &amp; PACIFIC*</b>	<b>18 311.9</b>	<b>14 357.2</b>	<b>15 481.6</b>	<b>14 898.4</b>	<b>11 251.9</b>	<b>-3.0 %</b>
<b>REST OF WORLD</b>	<b>19 159.6</b>	<b>21 684.6</b>	<b>21 630.8</b>	<b>22 135.0</b>	<b>22 143.8</b>	<b>1.4 %</b>
<b>WORLD</b>	<b>37 471.5</b>	<b>36 041.8</b>	<b>37 112.4</b>	<b>37 033.4</b>	<b>33 395.7</b>	<b>-0.5 %</b>

**Table 24. Cereals : production**

Unit: 1000 MT

Country	1992	1999	2000	2001	2002	Annual Growth Rate 1992 - 2002
<b>DEVELOPING COUNTRIES</b>						
SOUTHEAST ASIA						
1 . Cambodia	2 281.0	4 136.2	4 183.1	4 284.6	3 908.1	6.7 %
2 . Indonesia	56 235.5	60 070.4	61 575.0	59 808.0	60 881.0	1.1 %
3 . Lao PDR	1 561.1	2 198.9	2 318.7	2 446.4	2 523.0	6.6 %
4 . Malaysia	2 048.7	2 093.6	2 205.8	2 161.0	2 161.0	0.1 %
5 . Myanmar	15 342.4	20 776.1	21 965.9	22 713.0	22 849.0	3.5 %
6 . Philippines	14 132.3	16 371.2	16 900.5	17 479.9	17 589.9	2.1 %
7 . Thailand	23 864.0	28 647.7	30 275.7	31 634.0	30 484.4	3.2 %
8 . Viet Nam	22 338.2	33 146.9	34 535.4	34 092.9	36 378.2	5.1 %
SOUTH ASIA						
9 . Bangladesh	28 654.3	36 573.5	39 538.5	38 014.0	39 811.0	4.3 %
10 . Bhutan	105.8	159.3	159.3	159.3	106.9	1.8 %
11 . India	201 468.4	236 206.0	239 079.9	243 375.2	213 590.1	1.4 %
12 . Maldives	.0	.0	.0	.0 F	.0 F	-8.1 %
13 . Nepal	4 901.8	6 930.0	7 115.6	7 120.0	7 212.2	3.6 %
14 . Pakistan	22 123.4	27 754.8	30 460.7	27 048.0	26 767.9	2.5 %
15 . Sri Lanka	2 373.9	2 893.6	2 896.1	2 727.6	2 827.1	1.4 %
CENTRAL ASIA						
16 . Kazakhstan	29 649.0	14 248.4	11 547.1	15 913.8	15 952.1	-4.5 %
17 . Tajikistan	275.7	474.3	544.9	486.6	440.3 *	8.0 %
18 . Uzbekistan	2 177.6	4 304.0	3 915.6	4 032.9	5 510.4	8.7 %
OTHER ASIA						
19 . China	404 275.1	455 192.4	407 335.8	398 395.1	402 000.6	0.1 %
20 . Korea DPR	8 681.0	3 845.0	2 951.0	3 877.7	4 181.0	-8.0 %
21 . Iran (Islamic Rep. of)	15 810.8	14 186.1	12 874.0	14 945.1	17 323.0	-0.8 %
22 . Mongolia	495.5	169.8	140.4	140.5	151.3	-12.2 %
23 . Korea Republic of	7 845.7	7 458.4	7 428.9	7 905.5	7 105.5	0.1 %
PACIFIC ISLANDS						
24 . Cook Islands						
25 . Fiji Islands	23.5	18.6	14.5	15.9	16.0 F	-4.9 %
26 . Kiribati						
27 . Marshall Islands						
28 . Nauru						
29 . Niue						
30 . Palau						
31 . Papua New Guinea	5.4	10.6	11.3	12.6 F	12.8 F	9.0 %
32 . Samoa						
33 . Solomon Islands	.0 F	4.5 *	4.8 F	5.2 F	5.2 F	33.9 %
34 . Tonga						
35 . Vanuatu	.7 F	.7 F	.7 F	.7 F	.7 F	0.4 %
<b>SUB-TOTAL</b>	<b>866 670.8</b>	<b>977 870.9</b>	<b>939 979.1</b>	<b>938 795.6</b>	<b>919 788.8</b>	<b>1.0 %</b>
<b>DEVELOPED COUNTRIES</b>						
36 . Australia	25 096.7	35 369.8	34 447.9	39 257.5	17 655.5	2.4 %
37 . Japan	14 285.7	12 282.7	12 796.0	12 254.8	12 184.5	-1.2 %
38 . New Zealand	736.2	872.7	854.4	882.8	954.8	1.8 %
<b>SUB-TOTAL</b>	<b>40 118.6</b>	<b>48 525.2</b>	<b>48 098.3</b>	<b>52 395.1</b>	<b>30 794.7</b>	<b>1.2 %</b>
<b>ASIA &amp; PACIFIC*</b>	<b>906 789</b>	<b>1 026 396</b>	<b>988 077</b>	<b>991 191</b>	<b>950 584</b>	<b>1.0 %</b>
<b>REST OF WORLD</b>	<b>1 066 434</b>	<b>1 059 153</b>	<b>1 076 186</b>	<b>1 115 710</b>	<b>1 078 802</b>	<b>0.7 %</b>
<b>WORLD</b>	<b>1 973 224</b>	<b>2 085 549</b>	<b>2 064 263</b>	<b>2 106 900</b>	<b>2 029 386</b>	<b>0.8 %</b>

**Table 25.Cereals : yield**

Unit: kg/ha

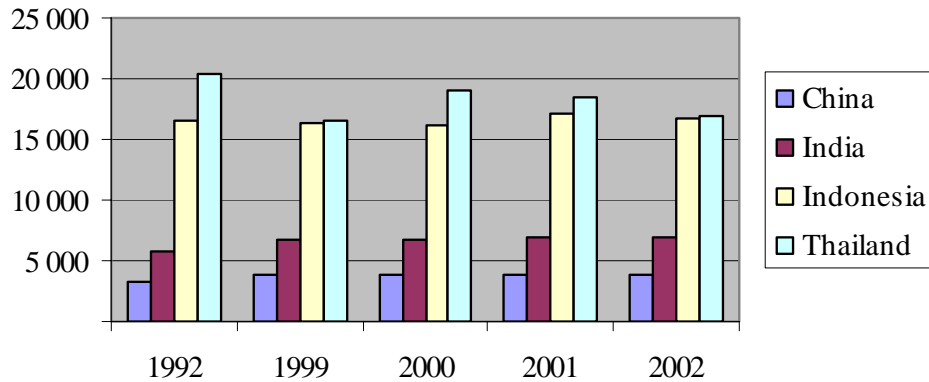
Country	1992	1999	2000	2001	2002	Annual Growth Rate 1992 - 2002
<b>DEVELOPING COUNTRIES</b>						
SOUTHEAST ASIA						
1 . Cambodia	1 315.9	1 933.5	2 133.6	2 092.6	1 922.4	4.7 %
2 . Indonesia	3 817.1	3 895.7	4 026.4	4 044.9	4 077.0	0.5 %
3 . Lao PDR	2 611.0	2 899.8	3 017.7	3 094.1	3 432.7	3.2 %
4 . Malaysia	2 953.1	2 910.3	3 037.9	3 136.4	3 088.5	0.1 %
5 . Myanmar	2 750.8	3 050.0	3 190.7	3 316.3	3 307.6	1.7 %
6 . Philippines	2 103.3	2 464.8	2 580.9	2 667.9	2 730.6	2.3 %
7 . Thailand	2 254.2	2 537.0	2 730.3	2 785.0	2 692.2	2.0 %
8 . Viet Nam	3 212.6	3 971.9	4 113.1	4 151.9	4 385.1	2.9 %
SOUTH ASIA						
9 . Bangladesh	2 638.3	3 131.0	3 373.8	3 298.3	3 348.0	3.1 %
10 . Bhutan	1 152.3	1 456.1	1 456.1	1 456.1	1 591.5	2.5 %
11 . India	2 024.8	2 398.2	2 334.7	2 429.5	2 339.7	1.8 %
12 . Maldives	1 000.0	1 000.0	800.0	1 000.0	1 000.0	-1.3 %
13 . Nepal	1 726.0	2 106.5	2 136.3	2 177.0	2 169.8	2.4 %
14 . Pakistan	1 881.5	2 217.8	2 407.9	2 230.9	2 207.8	2.2 %
15 . Sri Lanka	2 957.7	3 192.0	3 338.2	3 424.2	3 712.4	2.1 %
CENTRAL ASIA						
16 . Kazakhstan	1 338.4	1 303.8	943.7	1 218.4	1 143.7	1.6 %
17 . Tajikistan	1 036.6	1 217.5	1 323.3	1 278.9	1 307.9	3.0 %
18 . Uzbekistan	1 777.2	2 455.2	2 435.4	2 822.4	3 229.3	6.6 %
OTHER ASIA						
19 . China	4 366.0	4 947.1	4 789.3	4 800.5	4 963.4	1.1 %
20 . Korea DPR	5 615.1	2 867.3	2 367.4	3 020.7	3 206.9	-6.1 %
21 . Iran (Islamic Rep. of)	1 615.4	2 047.8	1 833.3	1 931.2	2 047.6	2.0 %
22 . Mongolia	833.9	615.0	779.0	749.4	685.6	-1.6 %
23 . Korea Republic of	6 067.0	6 367.5	6 374.1	6 602.5	6 088.6	1.0 %
PACIFIC ISLANDS						
24 . Cook Islands						
25 . Fiji Islands	2 153.9	2 747.5	2 503.0	2 270.9	2 283.5	-0.4 %
26 . Kiribati						
27 . Marshall Islands						
28 . Nauru						
29 . Niue						
30 . Palau						
31 . Papua New Guinea	2 683.2	3 981.1	4 109.1	4 064.5	4 196.7	5.4 %
32 . Samoa						
33 . Solomon Islands		3 996.5	4 000.0	4 000.0	4 000.0	0.3 %
34 . Tonga						
35 . Vanuatu	507.7	538.5	538.5	538.5	538.5	0.4 %
AVERAGE	2 310.9	2 675.9	2 691.6	2 763.1	2 803.6	2.3 %
<b>DEVELOPED COUNTRIES</b>						
36 . Australia	1 886.1	2 111.3	1 962.6	2 248.8	1 084.3	-0.7 %
37 . Japan	5 876.8	5 998.9	6 256.8	6 112.4	6 089.6	1.2 %
38 . New Zealand	5 437.2	6 168.6	6 273.1	6 467.4	6 343.8	2.0 %
AVERAGE	4 400.0	4 759.6	4 830.9	4 942.8	4 505.9	1.3 %
ASIA & PACIFIC*	2 844.4	3 280.5	3 172.9	3 226.9	3 196.2	1.4 %
REST OF WORLD	2 732.3	2 975.5	2 972.1	3 020.3	2 989.9	1.4 %
WORLD	2 782.7	3 118.2	3 064.9	3 114.1	3 083.1	1.4 %

**Table 26. Cereals: area harvested**

Unit: 1000 ha

Country	1992	1999	2000	2001	2002	Annual Growth Rate 1992 - 2002
<b>DEVELOPING COUNTRIES</b>						
SOUTHEAST ASIA						
1 . Cambodia	1 733.4	2 139.2	1 960.6	2 047.5	2 032.9	2.0 %
2 . Indonesia	14 732.7	15 419.6	15 293.0	14 785.9	14 932.9	0.6 %
3 . Lao PDR	597.9	758.3	768.4	790.6	735.0	3.3 %
4 . Malaysia	693.8	719.4	726.1	689.0	699.7	0.0 %
5 . Myanmar	5 577.5	6 811.9	6 884.3	6 849.0	6 908.0	1.8 %
6 . Philippines	6 719.2	6 642.0	6 548.4	6 552.0	6 441.8	-0.2 %
7 . Thailand	10 586.7	11 292.1	11 088.9	11 358.7	11 323.3	1.1 %
8 . Viet Nam	6 953.4	8 345.4	8 396.5	8 211.5	8 295.8	2.1 %
SOUTH ASIA						
9 . Bangladesh	10 860.8	11 681.0	11 719.5	11 525.5	11 890.9	1.1 %
10 . Bhutan	91.8 F	109.4	109.4	109.4	67.2	-0.7 %
11 . India	99 499.5	98 493.4	102 402.4	100 175.5	91 288.8	-0.3 %
12 . Maldives	.0 F	.0	.0 F	.0 F	.0 F	-6.9 %
13 . Nepal	2 840.0	3 289.9	3 330.7	3 270.6	3 323.9	1.2 %
14 . Pakistan	11 758.2	12 514.6	12 650.4	12 124.3	12 124.1	0.3 %
15 . Sri Lanka	802.6	906.5	867.5	796.6	761.5	-0.7 %
CENTRAL ASIA						
16 . Kazakhstan	22 152.4	10 928.0	12 236.6	13 061.4	13 947.3	-6.1 %
17 . Tajikistan	266.0	389.6	411.8	380.5	336.7	4.8 %
18 . Uzbekistan	1 225.3	1 753.0	1 607.8	1 428.9	1 706.4	2.0 %
OTHER ASIA						
19 . China	92 596.3	92 012.3	85 051.7	82 989.9	80 993.3	-0.9 %
20 . Korea DPR	1 546.0	1 341.0	1 246.5	1 283.7	1 303.7	-2.1 %
21 . Iran (Islamic Rep. of)	9 787.4	6 927.6	7 022.1	7 738.8	8 460.0	-2.7 %
22 . Mongolia	594.2	276.1	180.2	187.5	220.7	-10.8 %
23 . Korea Republic of	1 293.2	1 171.3	1 165.5	1 197.4	1 167.0	-0.8 %
PACIFIC ISLANDS						
24 . Cook Islands						
25 . Fiji Islands	10.9	6.8	5.8	7.0 F	7.0 F	-4.6 %
26 . Kiribati						
27 . Marshall Islands						
28 . Nauru						
29 . Niue						
30 . Palau						
31 . Papua New Guinea	2.0 F	2.7 F	2.8 F	3.1 F	3.1 F	3.5 %
32 . Samoa						
33 . Solomon Islands	.0 F	1.1	1.2 F	1.3 F	1.3 F	33.5 %
34 . Tonga						
35 . Vanuatu	1.3 F	1.3 F	1.3 F	1.3 F	1.3 F	0.0 %
<b>SUB-TOTAL</b>	<b>302 922.2</b>	<b>293 933.4</b>	<b>291 679.4</b>	<b>287 566.9</b>	<b>278 973.6</b>	<b>-0.6 %</b>
<b>DEVELOPED COUNTRIES</b>						
36 . Australia	13 306.5	16 752.7	17 552.3	17 457.5	16 282.5	3.2 %
37 . Japan	2 430.9	2 047.5	2 045.1	2 004.9	2 000.9	-2.4 %
38 . New Zealand	135.4	141.5	136.2	136.5	150.5	-0.2 %
<b>SUB-TOTAL</b>	<b>15 872.8</b>	<b>18 941.7</b>	<b>19 733.6</b>	<b>19 598.9</b>	<b>18 433.9</b>	<b>2.4 %</b>
<b>ASIA &amp; PACIFIC*</b>	<b>318 794.9</b>	<b>312 875.1</b>	<b>311 413.0</b>	<b>307 165.9</b>	<b>297 407.4</b>	<b>-0.4 %</b>
<b>REST OF WORLD</b>	<b>390 311.9</b>	<b>355 960.0</b>	<b>362 099.1</b>	<b>369 404.0</b>	<b>360 812.9</b>	<b>-0.8 %</b>
<b>WORLD</b>	<b>709 106.8</b>	<b>668 835.1</b>	<b>673 512.1</b>	<b>676 569.9</b>	<b>658 220.4</b>	<b>-0.6 %</b>

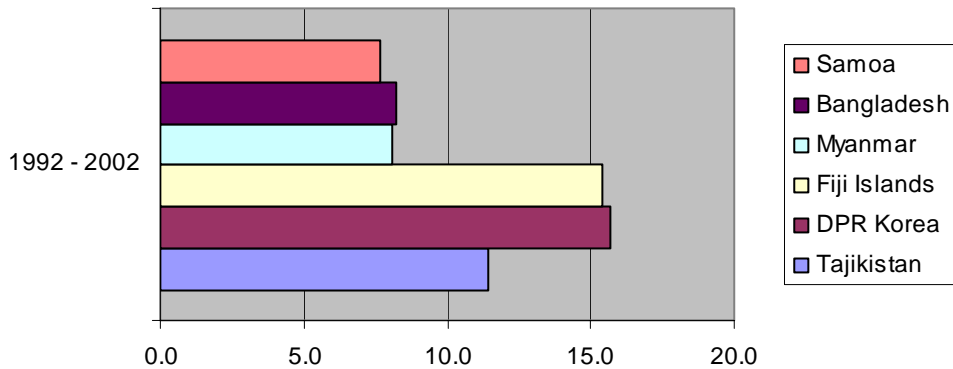
### Countries in Asia-Pacific region with largest production (1000 MT) of cassava



## STAPLE FOOD CROPS

### B. Root Crops

### Countries in Asia-Pacific region with highest annual growth rates for production of roots and tubers





**Table 27. Cassava : production**

Unit: 1000 MT

Country	1992	1999	2000	2001	2002	Annual Growth Rate 1992 - 2002
<b>DEVELOPING COUNTRIES</b>						
SOUTHEAST ASIA						
1 . Cambodia	150.0	228.5	147.8	142.3	186.8	9.2 %
2 . Indonesia	16 515.9	16 438.1	16 089.1	17 054.6	16 723.3	0.1 %
3 . Lao PDR	67.0 *	71.0 *	71.0 *	71.0 F	70.0 F	0.5 %
4 . Malaysia	430.0 F	380.0 F	380.0 F	380.0 F	370.0 F	-1.8 %
5 . Myanmar	40.7	88.1	77.2	96.8	96.8 F	6.4 %
6 . Philippines	1 797.8	1 890.3	1 765.7	1 652.0	1 652.0 F	-1.1 %
7 . Thailand	20 356.0	16 506.6	19 064.0	18 396.0	16 870.0	-1.3 %
8 . Viet Nam	2 567.9	1 800.5	1 986.3	2 806.2	4 157.7	1.7 %
SOUTH ASIA						
9 . Bangladesh						
10 . Bhutan						
11 . India	5 832.5	6 700.0 F	6 800.0 F	6 900.0 F	6 900.0 F	2.4 %
12 . Maldives	.0 F	.0	.0	.1	.1 F	12.9 %
13 . Nepal						
14 . Pakistan						
15 . Sri Lanka	302.2	251.5	249.1	233.6	234.0 F	-3.1 %
CENTRAL ASIA						
16 . Kazakhstan						
17 . Tajikistan						
18 . Uzbekistan						
OTHER ASIA						
19 . China	3 357.3 F	3 750.7 F	3 800.9 F	3 851.3 F	3 851.3 F	1.5 %
20 . DPR Korea						
21 . Iran (Islamic Rep. of)						
22 . Mongolia						
23 . Rep.of Korea						
PACIFIC ISLANDS						
24 . Cook Islands	3.99 F	3.00 F	3.00 F	3.00 F	3.00 F	-2.6 %
25 . Fiji Islands	8.06	26.90	31.94	32.58	33.00 F	13.7 %
26 . Kiribati						
27 . Marshall Islands						
28 . Nauru						
29 . Niue	.04 F	.04 F	.04 F	.04 F	.04 F	0.0 %
30 . Palau						
31 . Papua New Guinea	113.00 *	120.00 *	120.00 *	125.00 F	125.00 F	1.1 %
32 . Samoa	.25 F	.30 F	.30 F	.30 F	.30 F	2.4 %
33 . Solomon Islands	1.50 F	2.10 F	2.30 F	2.30 F	2.30 F	4.5 %
34 . Tonga	28.86	16.00 F	9.07	9.07 F	9.07 F	-15.6 %
35 . Vanuatu						
SUB-TOTAL	51 573.0	48 273.8	50 597.8	51 756.2	51 284.7	0.0 %
<b>DEVELOPED COUNTRIES</b>						
36 . Australia						
37 . Japan						
38 . New Zealand						
SUB-TOTAL						
ASIA & PACIFIC*	51 573.0	48 273.8	50 597.8	51 756.2	51 284.7	0.0 %
REST OF WORLD	110 588.2	123 387.1	127 969.4	131 532.7	133 567.9	2.0 %
WORLD	162 161.3	171 660.9	178 567.2	183 288.9	184 852.5	1.4 %

**Table 28. Cassava : yield**

Unit: kg/ha

Country	1992	1999	2000	2001	2002	Annual Growth Rate 1992 - 2002
<b>DEVELOPING COUNTRIES</b>						
SOUTHEAST ASIA						
1 . Cambodia	9 375.0	16 318.8	9 607.5	10 468.1	10 263.7	6.2 %
2 . Indonesia	12 222.0	12 176.3	12 530.5	12 940.7	12 963.8	0.8 %
3 . Lao PDR	13 400.0	13 653.9	13 653.9	13 653.9	13 461.5	0.0 %
4 . Malaysia	10 487.8	10 000.0	10 000.0	10 000.0	9 736.8	-0.7 %
5 . Myanmar	9 234.7	11 394.0	10 072.8	10 685.1	10 685.1	1.8 %
6 . Philippines	8 799.6	8 453.2	8 399.8	7 607.0	7 607.0	-1.2 %
7 . Thailand	14 033.2	15 492.8	16 857.7	17 959.3	16 378.6	2.5 %
8 . Viet Nam	9 048.3	7 988.0	8 359.9	10 633.6	12 602.9	2.2 %
SOUTH ASIA						
9 . Bangladesh						
10 . Bhutan						
11 . India	23 246.3	25 000.0	25 185.2	25 555.6	25 555.6	0.9 %
12 . Maldives	3 000.0	3 900.0	2 071.4	4 500.0	4 500.0	3.9 %
13 . Nepal						
14 . Pakistan						
15 . Sri Lanka	8 845.3	8 546.0	8 433.0	8 556.0	8 509.1	-0.8 %
CENTRAL ASIA						
16 . Kazakhstan						
17 . Tajikistan						
18 . Uzbekistan						
OTHER ASIA						
19 . China	14 562.4	15 957.1	15 965.1	16 040.5	16 040.5	1.0 %
20 . DPR Korea						
21 . Iran (Islamic Rep. of)						
22 . Mongolia						
23 . Rep.of Korea						
PACIFIC ISLANDS						
24 . Cook Islands	33 250.0	17 647.1	17 647.1	17 647.1	17 647.1	-4.3 %
25 . Fiji Islands	5 078.1	13 450.0	13 309.6	13 575.8	13 750.0	11.4 %
26 . Kiribati						
27 . Marshall Islands						
28 . Nauru						
29 . Niue	5 142.9	5 142.9	5 142.9	5 142.9	5 142.9	0.0 %
30 . Palau						
31 . Papua New Guinea	10 660.4	10 909.1	10 909.1	10 869.6	10 869.6	0.2 %
32 . Samoa	12 500.0	12 500.0	12 500.0	12 500.0	12 500.0	0.0 %
33 . Solomon Islands	16 666.7	16 153.9	16 428.6	16 428.6	16 428.6	-0.4 %
34 . Tonga	16 463.8	13 168.7	12 957.1	12 957.1	12 957.1	-2.1 %
35 . Vanuatu						
AVERAGE	12 421.9	12 518.5	12 106.9	12 511.6	12 505.3	0.5 %
<b>DEVELOPED COUNTRIES</b>						
36 . Australia						
37 . Japan						
38 . New Zealand						
AVERAGE						
ASIA & PACIFIC*	13 270.8	13 886.0	14 535.4	15 038.8	14 694.4	1.5 %
REST OF WORLD	8 672.4	9 423.1	9 587.6	9 588.3	9 694.7	1.1 %
WORLD	9 746.5	10 359.4	10 611.0	10 681.5	10 705.2	1.1 %

**Table 29. Cassava : area harvested**

Unit: 1000 ha

Country	1992	1999	2000	2001	2002	Annual Growth Rate 1992 - 2002
<b>DEVELOPING COUNTRIES</b>						
SOUTHEAST ASIA						
1 . Cambodia	16.0	14.0	15.4	13.6	18.2	2.8 %
2 . Indonesia	1 351.3	1 350.0	1 284.0	1 317.9	1 290.0 F	-0.7 %
3 . Lao PDR	5.0 F	5.2 F	5.2 F	5.2 F	5.2 F	0.5 %
4 . Malaysia	41.0 F	38.0 F	38.0 F	38.0 F	38.0 F	-1.1 %
5 . Myanmar	4.4	7.7	7.7	9.1	9.1 F	4.5 %
6 . Philippines	204.3	223.6	210.2	217.2	217.2 F	0.1 %
7 . Thailand	1 450.6	1 065.4	1 130.9	1 024.3	1 030.0 F	-3.7 %
8 . Viet Nam	283.8	225.4	237.6	263.9	329.9	-0.5 %
SOUTH ASIA						
9 . Bangladesh						
10 . Bhutan						
11 . India	250.9	268.0 F	270.0 F	270.0 F	270.0 F	1.5 %
12 . Maldives	.0 F	.0	.0	.0 F	.0 F	8.6 %
13 . Nepal						
14 . Pakistan						
15 . Sri Lanka	34.2	29.4	29.5	27.3	27.5 F	-2.3 %
CENTRAL ASIA						
16 . Kazakhstan						
17 . Tajikistan						
18 . Uzbekistan						
OTHER ASIA						
19 . China	230.5 F	235.1 F	238.1 F	240.1 F	240.1 F	0.5 %
20 . DPR Korea						
21 . Iran (Islamic Rep. of)						
22 . Mongolia						
23 . Rep.of Korea						
PACIFIC ISLANDS						
24 . Cook Islands	.12	.17 F	.17 F	.17 F	.17 F	1.8 %
25 . Fiji Islands	1.59	2.00 F	2.40 F	2.40 F	2.40 F	2.1 %
26 . Kiribati						
27 . Marshall Islands						
28 . Nauru						
29 . Niue	.01 F	.01 F	.01 F	.01 F	.01 F	0.0 %
30 . Palau						
31 . Papua New Guinea	10.60 *	11.00 *	11.00 *	11.50 F	11.50 F	0.9 %
32 . Samoa	.02 F	.02 F	.02 F	.02 F	.02 F	2.4 %
33 . Solomon Islands	.09 F	.13 F	.14 F	.14 F	.14 F	4.9 %
34 . Tonga	1.75 *	1.22 *	.70 F	.70 F	.70 F	-13.9 %
35 . Vanuatu						
SUB-TOTAL	3 886.2	3 476.4	3 481.0	3 441.5	3 490.1	-1.4 %
<b>DEVELOPED COUNTRIES</b>						
36 . Australia						
37 . Japan						
38 . New Zealand						
SUB-TOTAL						
ASIA & PACIFIC*	3 886.2	3 476.4	3 481.0	3 441.5	3 490.1	-1.4 %
REST OF WORLD	12 751.7	13 094.1	13 347.5	13 718.0	13 777.4	0.8 %
WORLD	16 637.9	16 570.5	16 828.5	17 159.5	17 267.5	0.3 %

**Table 30. Sweet potatoes : production**

Unit: 1000 MT

Country	1992	1999	2000	2001	2002	Annual Growth Rate 1992 - 2002
<b>DEVELOPING COUNTRIES</b>						
SOUTHEAST ASIA						
1 . Cambodia	60.0	32.5	28.2	26.3	25.5	-7.0 %
2 . Indonesia	2 171.0	1 665.5	1 828.0	1 749.0	1 746.3	-2.2 %
3 . Lao PDR	105.1	80.6	117.5	100.8	102.0 F	-1.6 %
4 . Malaysia	40.7 F	41.0 F	41.0 F	41.0 F	41.0 F	-0.1 %
5 . Myanmar	26.9 F	30.6	38.1	57.4	57.4 F	8.2 %
6 . Philippines	676.6	557.4	554.0	545.4	549.3	-2.9 %
7 . Thailand	98.0 F	100.1	90.9	97.4	97.4 F	0.0 %
8 . Viet Nam	2 593.0	1 744.6	1 611.3	1 655.1	1 725.1	-3.6 %
SOUTH ASIA						
9 . Bangladesh	470.2	383.0	378.0	357.0	346.0	-2.7 %
10 . Bhutan						
11 . India	1 130.7	1 152.4	1 007.4	1 200.0 F	1 200.0 F	-0.4 %
12 . Maldives	.0 *	.0	.0	.2	.2 F	20.6 %
13 . Nepal						
14 . Pakistan	5.6	9.3	9.1	9.2	9.1	5.2 %
15 . Sri Lanka	60.2	51.6	51.8	48.5	48.5 F	-2.4 %
CENTRAL ASIA						
16 . Kazakhstan						
17 . Tajikistan						
18 . Uzbekistan						
OTHER ASIA						
19 . China	104 637.4 *	126 143.7	118 175.9	113 785.1	114 289.1 *	0.7 %
20 . DPR Korea	288.0	490.0 *	290.0 *	320.0 F	340.0 F	8.4 %
21 . Iran (Islamic Rep. of)						
22 . Mongolia						
23 . Rep.of Korea	314.8	428.1	344.9	273.1	250.0 F	0.4 %
PACIFIC ISLANDS						
24 . Cook Islands	1.69 F	1.40 F	1.40 F	1.40 F	1.40 F	-2.6 %
25 . Fiji Islands	1.64	5.10	6.07	6.19 F	6.19 F	9.2 %
26 . Kiribati						
27 . Marshall Islands						
28 . Nauru						
29 . Niue	.25 F	.25 F	.25 F	.25 F	.25 F	0.1 %
30 . Palau						
31 . Papua New Guinea	475.00 *	480.00 *	480.00 *	490.00 F	490.00 F	0.5 %
32 . Samoa						
33 . Solomon Islands	60.00 F	75.00 F	79.00 F	84.00 F	84.00 F	3.4 %
34 . Tonga	3.84	3.08	8.00	5.50 F	5.50 F	1.0 %
35 . Vanuatu						
SUB-TOTAL	113 220.7	133 475.3	125 140.9	120 852.7	121 414.3	0.6 %
<b>DEVELOPED COUNTRIES</b>						
36 . Australia	5.9	6.0 F	6.0 F	6.0 F	6.0 F	-2.3 %
37 . Japan	1 295.0	1 008.0	1 073.4	1 063.0	1 030.0	-1.6 %
38 . New Zealand	19.4	17.0	17.5	16.0	16.0	-4.4 %
SUB-TOTAL	1 320.3	1 031.0	1 096.9	1 085.0	1 052.0	-1.7 %
ASIA & PACIFIC*	114 541.0	134 506.3	126 237.8	121 937.7	122 466.3	0.6 %
REST OF WORLD	9 105.4	12 163.6	12 730.1	13 662.1	13 664.1	4.5 %
WORLD	123 646.4	146 669.9	138 967.9	135 599.8	136 130.4	0.9 %

**Table 31. Sweet potatoes : yield**

Unit: kg/ha

Country	1992	1999	2000	2001	2002	Annual Growth Rate 1992 - 2002
<b>DEVELOPING COUNTRIES</b>						
SOUTHEAST ASIA						
1 . Cambodia	6 000.0	3 488.1	3 789.9	3 721.1	3 711.9	-4.1 %
2 . Indonesia	9 448.1	9 669.8	9 422.7	9 663.0	10 272.4	0.4 %
3 . Lao PDR	7 272.3	6 176.3	6 056.7	6 174.1	6 250.0	-2.5 %
4 . Malaysia	11 000.0	11 081.1	11 081.1	11 081.1	11 081.1	0.1 %
5 . Myanmar	5 380.0	5 649.2	5 741.6	6 701.9	6 701.9	2.5 %
6 . Philippines	4 806.5	4 211.5	4 338.8	4 379.3	4 394.6	-1.2 %
7 . Thailand	10 103.1	13 077.6	12 090.4	12 071.7	12 071.7	2.2 %
8 . Viet Nam	6 404.1	6 456.7	6 336.2	6 763.8	7 199.9	1.6 %
SOUTH ASIA						
9 . Bangladesh	9 647.7	9 278.6	9 247.9	9 090.7	9 091.9	-0.6 %
10 . Bhutan						
11 . India	8 283.5	8 574.4	8 836.8	8 888.9	8 888.9	0.7 %
12 . Maldives	221.4	1 655.2	816.3	2 250.0	2 250.0	31.3 %
13 . Nepal						
14 . Pakistan	10 436.8	11 233.9	10 977.1	10 416.8	10 038.6	0.5 %
15 . Sri Lanka	6 056.8	6 157.5	6 271.2	6 183.4	6 183.4	-0.8 %
CENTRAL ASIA						
16 . Kazakhstan						
17 . Tajikistan						
18 . Uzbekistan						
OTHER ASIA						
19 . China	16 710.0	21 215.0	20 289.9	20 661.0	19 018.9	1.6 %
20 . DPR Korea	14 400.0	13 424.7	12 608.7	11 428.6	11 333.3	-1.8 %
21 . Iran (Islamic Rep. of)						
22 . Mongolia						
23 . Rep.of Korea	20 075.2	21 288.2	21 356.2	21 473.4	20 833.3	1.1 %
PACIFIC ISLANDS						
24 . Cook Islands	30 727.3	28 000.0	28 000.0	28 000.0	28 000.0	0.2 %
25 . Fiji Islands	9 133.3	10 700.2	8 243.2	8 250.7	8 250.7	2.2 %
26 . Kiribati						
27 . Marshall Islands						
28 . Nauru						
29 . Niue	17 500.0	17 857.1	17 857.1	17 857.1	17 857.1	0.1 %
30 . Palau						
31 . Papua New Guinea	4 750.0	4 705.9	4 705.9	4 757.3	4 757.3	0.2 %
32 . Samoa						
33 . Solomon Islands	14 634.2	14 423.1	14 363.6	14 000.0	14 000.0	-0.5 %
34 . Tonga	12 371.0	12 369.5	12 345.7	12 222.2	12 222.2	0.7 %
35 . Vanuatu						
AVERAGE	10 698.2	10 940.6	10 671.7	10 728.9	10 655.0	0.4 %
<b>DEVELOPED COUNTRIES</b>						
36 . Australia	12 754.8	17 142.9	17 142.9	17 142.9	17 142.9	3.0 %
37 . Japan	23 502.7	22 651.7	24 732.7	25 130.0	24 523.8	1.1 %
38 . New Zealand	17 636.4	17 000.0	14 450.9	13 333.3	13 333.3	-5.3 %
AVERAGE	17 964.6	18 931.5	18 775.5	18 535.4	18 333.3	-0.4 %
ASIA & PACIFIC*	15 327.1	19 338.8	18 558.6	18 820.1	17 582.9	1.6 %
REST OF WORLD	5 287.9	5 451.3	5 121.5	5 103.7	4 879.5	-0.4 %
WORLD	13 447.1	15 965.6	14 962.5	14 810.0	13 940.1	0.6 %

**Table 32. Sweet potatoes : area harvested**

Unit: 1000 ha

Country	1992	1999	2000	2001	2002	Annual Growth Rate 1992 - 2002
<b>DEVELOPING COUNTRIES</b>						
SOUTHEAST ASIA						
1 . Cambodia	10.0	9.3	7.4	7.1	6.9	-3.1 %
2 . Indonesia	229.8	172.2	194.0	181.0	170.0 F	-2.6 %
3 . Lao PDR	14.5	13.1	19.4	16.3	16.3 F	0.9 %
4 . Malaysia	3.7 F	3.7 F	3.7 F	3.7 F	3.7 F	-0.2 %
5 . Myanmar	5.0 F	5.4	6.6	8.6	8.6 F	5.6 %
6 . Philippines	140.8	132.3	127.7	124.5	125.0 F	-1.7 %
7 . Thailand	9.7 F	7.7	7.5	8.1	8.1 F	-2.1 %
8 . Viet Nam	404.9	270.2	254.3	244.7	239.6	-5.1 %
SOUTH ASIA						
9 . Bangladesh	48.7	41.3	40.9	39.3	38.1	-2.1 %
10 . Bhutan						
11 . India	136.5	134.4	114.0	135.0 F	135.0 F	-1.1 %
12 . Maldives	.1 F	.0	.0	.1 F	.1 F	-8.2 %
13 . Nepal						
14 . Pakistan	.5	.8	.8	.9	.9	4.6 %
15 . Sri Lanka	9.9	8.4	8.3	7.9	7.9 F	-1.7 %
CENTRAL ASIA						
16 . Kazakhstan						
17 . Tajikistan						
18 . Uzbekistan						
OTHER ASIA						
19 . China	6 262.0 *	5 946.0	5 824.4	5 507.3	6 009.3 F	-0.8 %
20 . DPR Korea	20.0 F	36.5 F	23.0 F	28.0 F	30.0 F	10.3 %
21 . Iran (Islamic Rep. of)						
22 . Mongolia						
23 . Rep.of Korea	15.7	20.1	16.1	12.7	12.0 F	-0.8 %
PACIFIC ISLANDS						
24 . Cook Islands	.06	.05 F	.05 F	.05 F	.05 F	-2.8 %
25 . Fiji Islands	.18	.48	.74	.75 F	.75 F	6.9 %
26 . Kiribati						
27 . Marshall Islands						
28 . Nauru						
29 . Niue	.01 F	.01 F	.01 F	.01 F	.01 F	0.0 %
30 . Palau						
31 . Papua New Guinea	100.00 *	102.00 *	102.00 *	103.00 F	103.00 F	0.3 %
32 . Samoa						
33 . Solomon Islands	4.10 F	5.20 F	5.50 F	6.00 F	6.00 F	4.0 %
34 . Tonga	.31	.25	.65	.45 F	.45 F	0.3 %
35 . Vanuatu						
SUB-TOTAL	7 416.4	6 909.4	6 757.2	6 435.3	6 921.5	-1.0 %
<b>DEVELOPED COUNTRIES</b>						
36 . Australia	.5	.4 F	.4 F	.4 F	.4 F	-5.2 %
37 . Japan	55.1	44.5	43.4	42.3	42.0 F	-2.7 %
38 . New Zealand	1.1 F	1.0	1.2	1.2	1.2	1.0 %
SUB-TOTAL	56.7	45.9	45.0	43.9	43.6	-2.6 %
ASIA & PACIFIC*	7 473.1	6 955.3	6 802.1	6 479.1	6 965.1	-1.0 %
REST OF WORLD	1 721.9	2 231.3	2 485.6	2 676.9	2 800.3	4.9 %
WORLD	9 195.0	9 186.6	9 287.8	9 156.0	9 765.4	0.3 %

**Table 33. Potatoes : production**

Unit: 1000 MT

Country	1992	1999	2000	2001	2002	Annual Growth Rate 1992 - 2002
<b>DEVELOPING COUNTRIES</b>						
SOUTHEAST ASIA						
1 . Cambodia						
2 . Indonesia	702.6	924.1	977.3	954.3	850.0 F	1.5 %
3 . Lao PDR	35.0 *	33.0 *	33.0 *	34.0 F	35.0 F	0.2 %
4 . Malaysia						
5 . Myanmar	156.3	244.6	254.7	318.6	318.6 F	8.7 %
6 . Philippines	64.7	63.6	63.5	66.0	68.0 F	-1.6 %
7 . Thailand	30.0 F	100.1	90.9	84.1	84.1 F	12.9 %
8 . Viet Nam	259.3	330.0 F	316.0	340.0 F	377.5	3.0 %
SOUTH ASIA						
9 . Bangladesh	1 379.3	2 762.0	2 933.0	3 216.0	3 216.0 F	10.6 %
10 . Bhutan	34.1 F	34.1 F	34.1 F	34.1 F	22.0	-2.0 %
11 . India	16 387.9	23 610.7	24 713.2	22 142.7	24 000.0	4.7 %
12 . Maldives						
13 . Nepal	732.9	1 091.2	1 182.5	1 313.7	1 472.8	7.2 %
14 . Pakistan	859.8	1 810.4	1 868.4	1 666.1	1 721.6	8.3 %
15 . Sri Lanka	78.6	27.2	48.4	57.7	57.7 F	-6.9 %
CENTRAL ASIA						
16 . Kazakhstan	2 569.7	1 694.7	1 692.6	2 185.0	2 257.0	-1.5 %
17 . Tajikistan	167.4	239.6	303.2	318.0	400.0	11.4 %
18 . Uzbekistan	365.3	657.8	731.1	735.5	730.0 F	6.7 %
OTHER ASIA						
19 . China	37 826.2	56 141.1	66 325.2	64 596.1	65 052.1 *	5.5 %
20 . DPR Korea	867.0	1 473.0 *	1 870.0	2 268.0	1 884.0	17.5 %
21 . Iran (Islamic Rep. of)	2 708.3	3 433.1	3 658.0	3 485.8	3 500.0 F	2.1 %
22 . Mongolia	78.5	63.8	58.9	58.0	65.6	0.0 %
23 . Rep.of Korea	726.1	678.3	704.6	605.0	750.0 F	1.1 %
PACIFIC ISLANDS						
24 . Cook Islands						
25 . Fiji Islands	.09	.08 F	.08 F	.08 F	.08 F	2.8 %
26 . Kiribati						
27 . Marshall Islands						
28 . Nauru						
29 . Niue						
30 . Palau						
31 . Papua New Guinea	.34 F	.50 F	.54 F	.54 F	.54 F	5.1 %
32 . Samoa						
33 . Solomon Islands						
34 . Tonga						
35 . Vanuatu						
SUB-TOTAL	66 029.3	95 412.9	107 859.3	104 479.4	106 862.5	5.2 %
<b>DEVELOPED COUNTRIES</b>						
36 . Australia	1 150.1	1 326.8	1 199.6	1 250.0 F	1 260.0 F	1.2 %
37 . Japan	3 494.0	2 963.0	2 898.0	2 959.0	2 980.0 F	-1.9 %
38 . New Zealand	317.2	500.0	500.0	500.0	500.0	3.5 %
SUB-TOTAL	4 961.3	4 789.8	4 597.6	4 709.0	4 740.0	-0.6 %
ASIA & PACIFIC*	70 990.6	100 202.7	112 457.0	109 188.4	111 602.5	4.9 %
REST OF WORLD	205 790.3	200 694.9	216 904.2	202 654.8	195 838.0	-0.4 %
WORLD	276 780.9	300 897.6	329 361.2	311 843.2	307 440.4	1.2 %

**Table 34. Potatoes : yield**

Unit: kg/ha

Country	1992	1999	2000	2001	2002	Annual Growth Rate 1992 - 2002
<b>DEVELOPING COUNTRIES</b>						
SOUTHEAST ASIA						
1 . Cambodia						
2 . Indonesia	14 381.9	14 719.9	13 375.9	13 514.7	13 076.9	-1.7 %
3 . Lao PDR	7 000.0	6 600.0	6 226.4	6 181.8	6 363.6	-0.9 %
4 . Malaysia						
5 . Myanmar	10 148.2	10 438.2	9 902.0	10 866.2	10 866.2	1.0 %
6 . Philippines	13 017.7	12 129.7	12 279.9	12 390.4	12 363.6	-1.5 %
7 . Thailand	8 571.4	15 403.4	12 992.0	12 010.0	12 010.0	5.3 %
8 . Viet Nam	10 089.5	11 785.7	11 275.1	11 333.3	11 758.5	2.1 %
SOUTH ASIA						
9 . Bangladesh	10 793.1	11 281.0	12 059.1	12 916.3	12 916.3	1.8 %
10 . Bhutan	13 640.0	13 640.0	13 640.0	13 640.0	7 096.8	-2.9 %
11 . India	15 904.4	17 880.1	18 442.7	18 280.1	17 021.3	1.5 %
12 . Maldives						
13 . Nepal	8 591.6	9 259.9	9 643.6	10 182.4	10 901.8	2.2 %
14 . Pakistan	11 370.9	16 541.3	16 908.6	16 414.8	16 365.0	3.8 %
15 . Sri Lanka	11 010.8	12 520.7	13 292.2	13 571.8	13 571.8	2.3 %
CENTRAL ASIA						
16 . Kazakhstan	10 592.3	10 842.6	10 638.6	13 323.2	13 889.2	3.1 %
17 . Tajikistan	12 876.9	11 712.4	11 903.7	13 233.0	17 391.3	0.3 %
18 . Uzbekistan	8 509.2	13 562.9	14 005.8	14 478.4	14 313.7	5.1 %
OTHER ASIA						
19 . China	12 624.7	12 699.6	14 036.0	13 684.1	14 778.8	0.5 %
20 . DPR Korea	12 041.7	7 877.0	9 946.8	12 083.1	9 515.2	-1.4 %
21 . Iran (Islamic Rep. of)	16 287.9	20 929.5	21 662.9	19 968.9	20 000.0	0.7 %
22 . Mongolia	9 023.0	7 282.4	7 472.7	6 639.9	7 183.1	-1.0 %
23 . Rep.of Korea	20 987.7	24 525.6	23 954.6	24 502.9	30 000.0	2.2 %
PACIFIC ISLANDS						
24 . Cook Islands						
25 . Fiji Islands	8 454.5	8 000.0	8 000.0	8 000.0	8 000.0	2.1 %
26 . Kiribati						
27 . Marshall Islands						
28 . Nauru						
29 . Niue						
30 . Palau						
31 . Papua New Guinea	4 533.3	4 166.7	4 153.9	4 153.9	4 153.9	-1.3 %
32 . Samoa						
33 . Solomon Islands						
34 . Tonga						
35 . Vanuatu						
AVERAGE	11 384.1	12 445.4	12 536.9	12 789.5	12 888.0	1.1 %
<b>DEVELOPED COUNTRIES</b>						
36 . Australia	28 922.0	32 126.5	28 452.7	29 761.9	30 000.0	0.3 %
37 . Japan	31 364.5	30 327.5	30 634.3	31 817.2	30 408.2	-0.1 %
38 . New Zealand	39 650.0	41 666.7	42 315.5	50 000.0	50 000.0	1.1 %
AVERAGE	33 312.2	34 706.9	33 800.8	37 193.0	36 802.7	0.6 %
ASIA & PACIFIC*	13 737.3	14 087.7	15 050.9	14 864.7	15 400.8	0.6 %
REST OF WORLD	15 667.6	15 982.3	17 190.4	16 459.4	16 578.5	0.4 %
WORLD	15 122.6	15 297.2	16 394.7	15 863.5	16 130.7	0.3 %



**Table 35. Potatoes : area harvested**

Unit: 1000 ha

Country	1992	1999	2000	2001	2002	Annual Growth Rate 1992 - 2002
<b>DEVELOPING COUNTRIES</b>						
SOUTHEAST ASIA						
1 . Cambodia						
2 . Indonesia	48.9	62.8	73.1	70.6	65.0 F	3.2 %
3 . Lao PDR	5.0 F	5.0 F	5.3 F	5.5 F	5.5 F	1.2 %
4 . Malaysia						
5 . Myanmar	15.4	23.4	25.7	29.3	29.3 F	7.7 %
6 . Philippines	5.0	5.2	5.2	5.3	5.5 F	0.0 %
7 . Thailand	3.5 F	6.5 F	7.0 F	7.0 F	7.0 F	7.2 %
8 . Viet Nam	25.7	28.0 F	28.0	30.0 F	32.1	0.9 %
SOUTH ASIA						
9 . Bangladesh	127.8	244.8	243.2	249.0	249.0 F	8.6 %
10 . Bhutan	2.5 F	2.5 F	2.5 F	2.5 F	3.1	1.0 %
11 . India	1 030.4	1 320.5	1 340.0	1 211.3	1 410.0	3.1 %
12 . Maldives						
13 . Nepal	85.3	117.8	122.6	129.0	135.1	4.9 %
14 . Pakistan	75.6	109.4	110.5	101.5	105.2	4.4 %
15 . Sri Lanka	7.1	2.2	3.6	4.3	4.3 F	-9.0 %
CENTRAL ASIA						
16 . Kazakhstan	242.6	156.3	159.1	164.0	162.5	-4.5 %
17 . Tajikistan	13.0	20.5	25.5	24.0	23.0 F	11.1 %
18 . Uzbekistan	42.9	48.5	52.2	50.8	51.0 F	1.5 %
OTHER ASIA						
19 . China	2 996.2	4 420.7	4 725.4	4 720.5	4 401.7 F	5.0 %
20 . DPR Korea	72.0 F	187.0	188.0	187.7	198.0	19.1 %
21 . Iran (Islamic Rep. of)	166.3	164.0	168.9	174.6	175.0 F	1.4 %
22 . Mongolia	8.7	8.8	7.9	8.7	9.1	1.0 %
23 . Rep.of Korea	34.6	27.7	29.4	24.7	25.0 F	-1.1 %
PACIFIC ISLANDS						
24 . Cook Islands						
25 . Fiji Islands	.01	.01 F	.01 F	.01 F	.01 F	0.6 %
26 . Kiribati						
27 . Marshall Islands						
28 . Nauru						
29 . Niue						
30 . Palau						
31 . Papua New Guinea	.08 F	.12 F	.13 F	.13 F	.13 F	6.5 %
32 . Samoa						
33 . Solomon Islands						
34 . Tonga						
35 . Vanuatu						
SUB-TOTAL	5 008.6	6 961.8	7 323.2	7 200.5	7 096.5	4.4 %
<b>DEVELOPED COUNTRIES</b>						
36 . Australia	39.8	41.3	42.2	42.0 F	42.0 F	0.9 %
37 . Japan	111.4	97.7	94.6	93.0	98.0 F	-1.7 %
38 . New Zealand	8.0 F	12.0	11.8	10.0	10.0	2.4 %
SUB-TOTAL	159.2	151.0	148.6	145.0	150.0	-0.8 %
ASIA & PACIFIC*	5 167.7	7 112.8	7 471.8	7 345.5	7 246.5	4.3 %
REST OF WORLD	13 134.8	12 557.3	12 617.8	12 312.4	11 812.8	-0.7 %
WORLD	18 302.5	19 670.1	20 089.5	19 657.9	19 059.3	0.9 %

**Table 36. Taro : production**

Unit: 1000 MT

Country	1992	1999	2000	2001	2002	Annual Growth Rate 1992 - 2002
<b>DEVELOPING COUNTRIES</b>						
SOUTHEAST ASIA						
1 . Cambodia						
2 . Indonesia						
3 . Lao PDR						
4 . Malaysia						
5 . Myanmar						
6 . Philippines	96.6	97.3	95.9	96.9	96.9 F	1.8 %
7 . Thailand	56.0 F	56.0 F	56.0 F	61.6 F	61.6 F	1.0 %
8 . Viet Nam						
SOUTH ASIA						
9 . Bangladesh						
10 . Bhutan						
11 . India						
12 . Maldives	.8 F	.3	.2	.3	.3 F	-12.9 %
13 . Nepal						
14 . Pakistan						
15 . Sri Lanka						
CENTRAL ASIA						
16 . Kazakhstan						
17 . Tajikistan						
18 . Uzbekistan						
OTHER ASIA						
19 . China	1 276.2 F	1 493.1 F	1 540.7 F	1 547.6 F	1 547.6 F	2.1 %
20 . DPR Korea						
21 . Iran (Islamic Rep. of)						
22 . Mongolia						
23 . Rep.of Korea	.0	.0	.0	.0	.0	0.0 %
PACIFIC ISLANDS						
24 . Cook Islands						
25 . Fiji Islands	5.88	25.91	30.26	37.88	37.88 F	21.4 %
26 . Kiribati	1.40 F	1.60	1.60 F	1.70 F	1.70 F	1.9 %
27 . Marshall Islands						
28 . Nauru						
29 . Niue	3.00 F	3.20 F	3.20 F	3.20 F	3.20 F	0.3 %
30 . Palau						
31 . Papua New Guinea	205.00 F	170.00 F	172.00 F	174.00 F	174.00 F	-2.0 %
32 . Samoa	10.00 F	20.00 F	15.00	15.00	17.00	10.3 %
33 . Solomon Islands	28.80 F	32.00 F	34.00 F	36.00 F	36.00 F	3.1 %
34 . Tonga	12.58	3.24	3.72	3.70 F	3.70 F	-14.3 %
35 . Vanuatu						
SUB-TOTAL	1 696.2	1 902.6	1 952.6	1 977.9	1 979.9	1.8 %
<b>DEVELOPED COUNTRIES</b>						
36 . Australia						
37 . Japan	304.6	247.7	230.5	218.1	210.0 F	-2.9 %
38 . New Zealand						
SUB-TOTAL	304.6	247.7	230.5	218.1	210.0	-2.9 %
ASIA & PACIFIC*	2 000.8	2 150.3	2 183.1	2 196.0	2 189.9	1.2 %
REST OF WORLD	3 252.6	6 704.9	6 701.6	6 820.6	7 030.7	9.8 %
WORLD	5 253.5	8 855.1	8 884.8	9 016.6	9 220.5	7.1 %

**Table 37. Taro : yield**

Unit: kg/ha

Country	1992	1999	2000	2001	2002	Annual Growth Rate 1992 - 2002
<b>DEVELOPING COUNTRIES</b>						
SOUTHEAST ASIA						
1 . Cambodia						
2 . Indonesia						
3 . Lao PDR						
4 . Malaysia						
5 . Myanmar						
6 . Philippines	3 448.3	5 308.6	5 329.9	5 367.5	5 367.5	6.3 %
7 . Thailand	10 980.4	11 200.0	11 200.0	11 200.0	11 200.0	0.3 %
8 . Viet Nam						
SOUTH ASIA						
9 . Bangladesh						
10 . Bhutan						
11 . India						
12 . Maldives	10 000.0	5 075.5	2 353.7	5 800.0	5 800.0	-10.2 %
13 . Nepal						
14 . Pakistan						
15 . Sri Lanka						
CENTRAL ASIA						
16 . Kazakhstan						
17 . Tajikistan						
18 . Uzbekistan						
OTHER ASIA						
19 . China	15 153.9	17 431.8	17 799.1	17 812.6	17 812.6	1.6 %
20 . DPR Korea						
21 . Iran (Islamic Rep. of)						
22 . Mongolia						
23 . Rep.of Korea						
PACIFIC ISLANDS						
24 . Cook Islands						
25 . Fiji Islands	3 167.7	19 063.3	9 480.3	12 219.4	12 219.4	15.7 %
26 . Kiribati	4 000.0	4 210.5	4 210.5	4 250.0	4 250.0	0.6 %
27 . Marshall Islands						
28 . Nauru						
29 . Niue	6 976.7	7 441.9	7 441.9	7 441.9	7 441.9	0.3 %
30 . Palau						
31 . Papua New Guinea	6 406.3	5 483.9	5 375.0	5 437.5	5 437.5	-2.4 %
32 . Samoa	4 000.0	4 702.6	5 000.0	5 000.0	4 857.1	3.2 %
33 . Solomon Islands	22 153.9	20 000.0	20 000.0	20 000.0	20 000.0	-1.2 %
34 . Tonga	7 281.4	6 864.4	7 440.0	9 250.0	9 250.0	-0.4 %
35 . Vanuatu						
AVERAGE	7 797.4	8 898.5	7 969.2	8 648.2	8 636.3	0.5 %
<b>DEVELOPED COUNTRIES</b>						
36 . Australia						
37 . Japan	12 184.0	11 795.2	12 260.6	12 829.4	12 352.9	0.2 %
38 . New Zealand						
AVERAGE	12 184.0	11 795.2	12 260.6	12 829.4	12 352.9	0.2 %
ASIA & PACIFIC*	10 959.9	12 683.8	12 868.8	13 023.4	12 948.8	1.6 %
REST OF WORLD	4 131.2	5 236.7	5 227.8	5 237.7	5 012.1	2.7 %
WORLD	5 416.5	6 107.4	6 120.8	6 130.2	5 866.0	1.3 %

**Table 38. Taro : area harvested**

Unit: 1000 ha

Country	1992	1999	2000	2001	2002	Annual Growth Rate 1992 - 2002
<b>DEVELOPING COUNTRIES</b>						
SOUTHEAST ASIA						
1 . Cambodia						
2 . Indonesia						
3 . Lao PDR						
4 . Malaysia						
5 . Myanmar						
6 . Philippines	28.0 F	18.3	18.0	18.0	18.0 F	-4.3 %
7 . Thailand	5.1 F	5.0 F	5.0 F	5.5 F	5.5 F	0.8 %
8 . Viet Nam						
SOUTH ASIA						
9 . Bangladesh						
10 . Bhutan						
11 . India						
12 . Maldives	.1 F	.1	.1	.1 F	.1 F	-3.1 %
13 . Nepal						
14 . Pakistan						
15 . Sri Lanka						
CENTRAL ASIA						
16 . Kazakhstan						
17 . Tajikistan						
18 . Uzbekistan						
OTHER ASIA						
19 . China	84.2 F	85.7 F	86.6 F	86.9 F	86.9 F	0.5 %
20 . DPR Korea						
21 . Iran (Islamic Rep. of)						
22 . Mongolia						
23 . Rep.of Korea	.0	.0	.0	.0	.0	0.0 %
PACIFIC ISLANDS						
24 . Cook Islands						
25 . Fiji Islands	1.86	1.36	3.19	3.10	3.10 F	4.9 %
26 . Kiribati	.35 F	.38	.38 F	.40 F	.40 F	1.4 %
27 . Marshall Islands						
28 . Nauru						
29 . Niue	.43 F	.43 F	.43 F	.43 F	.43 F	0.0 %
30 . Palau						
31 . Papua New Guinea	32.00 F	31.00 F	32.00 F	32.00 F	32.00 F	0.5 %
32 . Samoa	2.50 F	4.25	3.00	3.00	3.50	6.8 %
33 . Solomon Islands	1.30 F	1.60 F	1.70 F	1.80 F	1.80 F	4.4 %
34 . Tonga	1.73	.47	.50 F	.40 F	.40 F	-14.0 %
35 . Vanuatu						
SUB-TOTAL	157.6	148.5	150.8	151.6	152.1	-0.1 %
<b>DEVELOPED COUNTRIES</b>						
36 . Australia						
37 . Japan	25.0	21.0	18.8	17.0 F	17.0 F	-3.1 %
38 . New Zealand						
SUB-TOTAL	25.0	21.0	18.8	17.0	17.0	-3.1 %
ASIA & PACIFIC*	182.6	169.5	169.6	168.6	169.1	-0.4 %
REST OF WORLD	787.3	1 280.4	1 281.9	1 302.2	1 402.7	6.9 %
WORLD	969.9	1 449.9	1 451.6	1 470.8	1 571.9	5.8 %

**Table 39. Roots and tubers : production**

Unit: 1000 MT

Country	1992	1999	2000	2001	2002	Annual Growth Rate 1992 - 2002
<b>DEVELOPING COUNTRIES</b>						
SOUTHEAST ASIA						
1 . Cambodia	226.0	279.5	194.9	188.5	232.3	4.5 %
2 . Indonesia	19 709.5	19 377.7	19 244.5	20 107.9	19 669.6	-0.1 %
3 . Lao PDR	207.1	184.6	221.5	205.8	207.0 F	-0.7 %
4 . Malaysia	520.7 F	469.0 F	466.0 F	465.0 F	455.0 F	-1.6 %
5 . Myanmar	223.9	363.3	370.1	472.8	472.8 F	8.1 %
6 . Philippines	2 801.5	2 823.6	2 697.8	2 569.6	2 575.5	-1.1 %
7 . Thailand	20 590.0	16 817.9	19 357.9	18 696.0	17 170.0	-1.2 %
8 . Viet Nam	5 420.2	3 875.1	3 913.6	4 801.3	6 260.3	-0.3 %
SOUTH ASIA						
9 . Bangladesh	1 849.5	3 145.0	3 311.0	3 573.0	3 562.0	8.3 %
10 . Bhutan	55.1 F	55.9 F	55.9 F	55.9 F	43.8	-1.0 %
11 . India	23 351.1	31 463.1	32 520.6	30 242.7	32 100.0	3.9 %
12 . Maldives	7.4	7.4	7.8	8.3	8.3 F	0.7 %
13 . Nepal	873.9	1 191.2	1 282.5	1 418.7	1 576.8	6.1 %
14 . Pakistan	1 212.9	2 239.7	2 307.5	2 115.3	2 170.7	6.9 %
15 . Sri Lanka	440.9	330.3	349.3	339.8	340.2 F	-3.5 %
CENTRAL ASIA						
16 . Kazakhstan	2 569.7	1 694.7	1 692.6	2 185.0	2 257.0	-1.5 %
17 . Tajikistan	167.4	239.6	303.2	318.0	400.0	11.4 %
18 . Uzbekistan	365.3	657.8	731.1	735.5	730.0 F	6.7 %
OTHER ASIA						
19 . China	147 121.2	187 542.5	189 856.8	183 794.6	184 754.6	2.2 %
20 . DPR Korea	1 155.0	1 963.0 *	2 160.0	2 588.0	2 224.0	15.7 %
21 . Iran (Islamic Rep. of)	2 708.3	3 433.1	3 658.0	3 485.8	3 500.0 F	2.1 %
22 . Mongolia	78.5	63.8	58.9	58.0	65.6	0.0 %
23 . Rep.of Korea	1 040.9	1 106.4	1 049.5	878.1	1 000.0	0.9 %
PACIFIC ISLANDS						
24 . Cook Islands	10.18	6.40 F	6.40 F	6.40 F	6.40 F	-3.2 %
25 . Fiji Islands	19.45	63.45	77.02	85.50	85.91 F	15.4 %
26 . Kiribati	7.60 F	8.80	8.60 F	8.90 F	8.90 F	1.9 %
27 . Marshall Islands						
28 . Nauru						
29 . Niue	3.40 F	3.61 F	3.61 F	3.61 F	3.61 F	0.3 %
30 . Palau						
31 . Papua New Guinea	1 270.34	1 260.50	1 279.54	1 301.54 F	1 301.54 F	0.3 %
32 . Samoa	14.05 F	25.60 F	20.60	20.60	22.70	7.7 %
33 . Solomon Islands	112.60 F	133.60 F	144.80 F	153.80 F	153.80 F	3.6 %
34 . Tonga	55.50	27.30	26.33	23.17 F	23.17 F	-11.4 %
35 . Vanuatu	38.00 F	44.00 F	45.00 F	45.00 F	45.00 F	2.3 %
SUB-TOTAL	234 227.0	280 897.4	287 422.8	280 952.2	283 426.5	2.0 %
<b>DEVELOPED COUNTRIES</b>						
36 . Australia	1 156.1	1 332.8	1 205.6	1 256.0 F	1 266.0 F	1.2 %
37 . Japan	5 334.4	4 486.7	4 478.6	4 516.1	4 496.0	-1.7 %
38 . New Zealand	336.6	517.0	517.5	516.0	516.0	3.2 %
SUB-TOTAL	6 827.1	6 336.5	6 201.7	6 288.1	6 278.0	-0.8 %
ASIA & PACIFIC*	241 054.4	287 234.2	293 624.8	287 240.6	289 704.8	1.9 %
REST OF WORLD	361 876.8	386 326.2	408 175.8	398 576.7	395 024.3	1.0 %
WORLD	602 931.1	673 560.4	701 800.6	685 817.3	684 729.1	1.4 %

**Table 40. Roots and tubers : yield**

Unit: kg/ha

Country	1992	1999	2000	2001	2002	Annual Growth Rate 1992 - 2002
<b>DEVELOPING COUNTRIES</b>						
SOUTHEAST ASIA						
1 . Cambodia	8 370.4	11 214.8	7 968.2	8 436.5	8 675.8	3.7 %
2 . Indonesia	11 635.1	11 736.7	11 900.8	12 294.6	12 363.0	0.7 %
3 . Lao PDR	8 469.7	7 939.8	7 408.0	7 615.1	7 661.0	-1.5 %
4 . Malaysia	9 696.5	9 305.6	9 338.7	9 356.1	9 154.9	-0.6 %
5 . Myanmar	9 025.0	9 931.6	9 244.5	10 071.7	10 071.7	1.4 %
6 . Philippines	6 855.6	6 727.2	6 704.5	6 343.0	6 347.7	-0.7 %
7 . Thailand	13 977.7	15 442.0	16 760.1	17 812.8	16 270.8	2.5 %
8 . Viet Nam	7 587.1	7 400.9	7 527.2	8 914.4	10 406.0	2.5 %
SOUTH ASIA						
9 . Bangladesh	10 476.9	10 992.1	11 654.6	12 395.1	12 409.3	1.7 %
10 . Bhutan	10 596.2	10 750.0	10 750.0	10 750.0	7 551.7	-1.5 %
11 . India	16 470.0	18 261.7	18 863.5	18 711.1	17 686.0	1.4 %
12 . Maldives	4 516.9	4 620.6	4 448.1	4 595.6	4 595.6	-0.5 %
13 . Nepal	7 712.8	8 641.9	8 992.4	9 456.9	9 910.9	2.4 %
14 . Pakistan	12 453.4	16 556.8	16 864.1	16 450.8	16 406.5	2.8 %
15 . Sri Lanka	8 606.4	8 261.1	8 429.1	8 624.4	8 591.4	-0.6 %
CENTRAL ASIA						
16 . Kazakhstan	10 592.3	10 842.6	10 638.6	13 323.2	13 889.2	3.1 %
17 . Tajikistan	12 876.9	11 712.4	11 903.7	13 233.0	17 391.3	0.3 %
18 . Uzbekistan	8 509.2	13 562.9	14 005.8	14 478.4	14 313.7	5.1 %
OTHER ASIA						
19 . China	15 364.6	17 546.4	17 457.5	17 411.8	17 204.1	0.8 %
20 . DPR Korea	12 554.4	8 783.0	10 237.0	11 998.2	9 754.4	-1.6 %
21 . Iran (Islamic Rep. of)	16 287.9	20 929.5	21 662.9	19 968.9	20 000.0	0.7 %
22 . Mongolia	9 023.0	7 282.4	7 472.7	6 639.9	7 183.1	-1.0 %
23 . Rep. of Korea	20 703.1	23 162.7	23 033.6	23 472.9	27 027.0	1.9 %
PACIFIC ISLANDS						
24 . Cook Islands	29 507.3	20 000.0	20 000.0	20 000.0	20 000.0	-2.5 %
25 . Fiji Islands	3 160.7	12 073.8	9 705.7	10 773.1	10 825.7	15.5 %
26 . Kiribati	7 835.1	8 148.2	8 113.2	8 090.9	8 090.9	0.4 %
27 . Marshall Islands						
28 . Nauru						
29 . Niue	5 873.9	6 206.5	6 206.5	6 206.5	6 206.5	0.3 %
30 . Palau						
31 . Papua New Guinea	7 369.6	7 218.5	7 223.7	7 245.7	7 245.7	-0.2 %
32 . Samoa	4 296.6	4 869.7	5 144.9	5 144.9	5 017.7	2.0 %
33 . Solomon Islands	18 016.0	16 847.4	16 955.5	16 645.0	16 645.0	-0.8 %
34 . Tonga	11 964.4	12 106.4	11 968.2	11 821.4	11 821.4	-0.7 %
35 . Vanuatu	8 444.4	8 800.0	8 181.8	8 181.8	8 181.8	-0.2 %
AVERAGE	10 900.9	11 496.1	11 461.4	11 764.5	11 840.6	0.9 %
<b>DEVELOPED COUNTRIES</b>						
36 . Australia	28 735.1	32 000.6	28 359.6	29 657.6	29 893.7	0.4 %
37 . Japan	25 892.6	25 362.9	26 138.7	27 205.4	26 338.6	0.4 %
38 . New Zealand	36 989.0	39 769.2	39 725.2	46 071.4	46 071.4	0.9 %
AVERAGE	30 538.9	32 377.6	31 407.8	34 311.5	34 101.3	0.6 %
ASIA & PACIFIC*	14 239.4	16 011.7	16 173.9	16 260.2	16 002.0	1.1 %
REST OF WORLD	11 340.1	11 367.6	11 791.6	11 345.7	11 272.5	-0.1 %
WORLD	12 345.0	12 972.1	13 299.2	12 990.1	12 883.6	0.4 %

**Table 41. Roots and tubers : area harvested**

Unit: 1000 ha

Country	1992	1999	2000	2001	2002	Annual Growth Rate 1992 - 2002
<b>DEVELOPING COUNTRIES</b>						
<b>SOUTHEAST ASIA</b>						
1 . Cambodia	27.0	24.9	24.5	22.3	26.8	0.8 %
2 . Indonesia	1 694.0	1 651.0	1 617.1	1 635.5	1 591.0 F	-0.8 %
3 . Lao PDR	24.5	23.3	29.9	27.0	27.0 F	0.9 %
4 . Malaysia	53.7 F	50.4 F	49.9 F	49.7 F	49.7 F	-1.1 %
5 . Myanmar	24.8	36.6	40.0	46.9	46.9 F	6.6 %
6 . Philippines	408.6	419.7	402.4	405.1	405.7 F	-0.4 %
7 . Thailand	1 473.1	1 089.1	1 155.0	1 049.6	1 055.3 F	-3.6 %
8 . Viet Nam	714.4	523.6	519.9	538.6	601.6	-2.7 %
<b>SOUTH ASIA</b>						
9 . Bangladesh	176.5	286.1	284.1	288.3	287.0	6.4 %
10 . Bhutan	5.2 F	5.2 F	5.2 F	5.2 F	5.8	0.5 %
11 . India	1 417.8	1 722.9	1 724.0	1 616.3	1 815.0	2.5 %
12 . Maldives	1.6 F	1.6	1.7	1.8 F	1.8 F	1.2 %
13 . Nepal	113.3	137.8	142.6	150.0	159.1	3.5 %
14 . Pakistan	97.4	135.3	136.8	128.6	132.3	3.9 %
15 . Sri Lanka	51.2	40.0	41.4	39.4	39.6 F	-2.9 %
<b>CENTRAL ASIA</b>						
16 . Kazakhstan	242.6	156.3	159.1	164.0	162.5	-4.5 %
17 . Tajikistan	13.0	20.5	25.5	24.0	23.0 F	11.1 %
18 . Uzbekistan	42.9	48.5	52.2	50.8	51.0 F	1.5 %
<b>OTHER ASIA</b>						
19 . China	9 575.3	10 688.4	10 875.4	10 555.8	10 739.0 F	1.4 %
20 . DPR Korea	92.0 F	223.5	211.0	215.7	228.0	17.6 %
21 . Iran (Islamic Rep. of)	166.3	164.0	168.9	174.6	175.0 F	1.4 %
22 . Mongolia	8.7	8.8	7.9	8.7	9.1	1.0 %
23 . Rep. of Korea	50.3	47.8	45.6	37.4	37.0	-1.0 %
<b>PACIFIC ISLANDS</b>						
24 . Cook Islands	.35	.32 F	.32 F	.32 F	.32 F	-0.7 %
25 . Fiji Islands	6.16	5.26	7.94	7.94	7.94 F	-0.1 %
26 . Kiribati	.97 F	1.08	1.06 F	1.10 F	1.10 F	1.5 %
27 . Marshall Islands						
28 . Nauru						
29 . Niue	.58 F	.58 F	.58 F	.58 F	.58 F	0.0 %
30 . Palau						
31 . Papua New Guinea	172.38	174.62	177.13	179.63 F	179.63 F	0.5 %
32 . Samoa	3.27 F	5.26	4.00	4.00	4.52	5.5 %
33 . Solomon Islands	6.25 F	7.93 F	8.54 F	9.24 F	9.24 F	4.5 %
34 . Tonga	4.64	2.26	2.20	1.96 F	1.96 F	-10.8 %
35 . Vanuatu	4.50 F	5.00 F	5.50 F	5.50 F	5.50 F	2.5 %
<b>SUB-TOTAL</b>	<b>16 673.3</b>	<b>17 707.5</b>	<b>17 927.3</b>	<b>17 445.7</b>	<b>17 880.1</b>	<b>0.8 %</b>
<b>DEVELOPED COUNTRIES</b>						
36 . Australia	40.2	41.6	42.5	42.4 F	42.4 F	0.8 %
37 . Japan	206.0	176.9	171.3	166.0	170.7 F	-2.0 %
38 . New Zealand	9.1 F	13.0	13.0	11.2	11.2	2.2 %
<b>SUB-TOTAL</b>	<b>255.4</b>	<b>231.5</b>	<b>226.9</b>	<b>219.6</b>	<b>224.3</b>	<b>-1.4 %</b>
<b>ASIA &amp; PACIFIC*</b>	<b>16 928.7</b>	<b>17 939.1</b>	<b>18 154.2</b>	<b>17 665.2</b>	<b>18 104.4</b>	<b>0.8 %</b>
<b>REST OF WORLD</b>	<b>31 911.4</b>	<b>33 984.9</b>	<b>34 615.9</b>	<b>35 130.4</b>	<b>35 043.1</b>	<b>1.1 %</b>
<b>WORLD</b>	<b>48 840.0</b>	<b>51 923.9</b>	<b>52 770.1</b>	<b>52 795.6</b>	<b>53 147.5</b>	<b>1.0 %</b>