



ACTION AGAINST DESERTIFICATION



MONITORING AND EVALUATION

Monitoring and Evaluation (M&E) is essential to track progress made by Action Against Desertification and to measure the bio-physical and socio-economic impact of its activities. Data gathered helps Action Against Desertification to compare results obtained with programme objectives. At the same time, the data have produced groundbreaking insights into the world's drylands and the Great Green Wall.

Polygons of land prepared in Burkina Faso based on remote sensing images.



M&E has helped Action Against Desertification assess its activities, while the collected data are used for decision-making, corrective action, continuous improvement of the programme and as a guide for similar projects. Activities include:

→ ESTABLISHING BASELINES

for bio-physical and socio-economic assessments of the eight countries involved in Action Against Desertification; these are used as references to measure the programme's progress.

Africa's Great Green Wall for the first time. Its core area is estimated to cover 780 million hectares, more than twice the size of India, from which 10 million hectares must be restored each year by 2030.

→ FIRST GLOBAL ASSESSMENT

of trees, forests and land use in drylands; this found that forests in drylands are much more extensive than previously assumed. Analysis of over 200 000 sample plots of 0.5 ha each led to a major study published in *Science* magazine in May 2017.

→ CONTINUOUS MONITORING

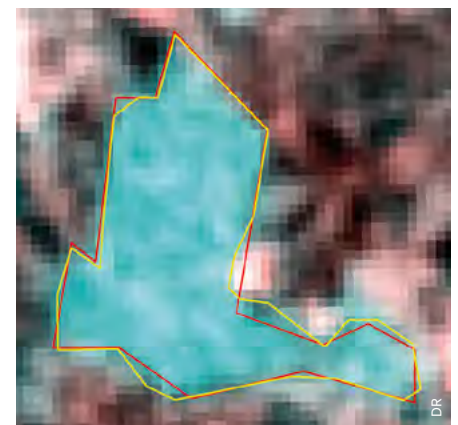
and regular mapping of all intervention areas to ensure a very close follow-up of Action Against Desertification's growing impact on the ground.

→ THE GLOBAL DRYLANDS

assessment also enabled mapping the restoration needs and opportunities for

→ DEVELOPING THE TECHNICAL

capacities of key staff and partners in applying M&E tools within the framework of a strategy to harmonize methodologies across the Great Green Wall community.





ACTION AGAINST DESERTIFICATION is an initiative of the African, Caribbean and Pacific Group of States (ACP) in support of the Great Green Wall for the Sahara and the Sahel initiative and UNCCD national action programmes to combat desertification. It promotes sustainable land management and restoration of degraded land in Africa, the Caribbean and the Pacific. Action Against Desertification is implemented by FAO and partners with funding from the European Union in the framework of the 10th European Development Fund (EDF).

Contacts

Moctar Sacande
International Project Coordinator
moctar.sacande@fao.org

Marc Parfondry
Forestry Expert
marc.parfondry@fao.org

Antonio Martucci
GIS & Monitoring Support
antonio.martucci@fao.org

METHODS AND TOOLS

OBJECTIVELY VERIFIABLE INDICATORS

All M&E work uses objectively verifiable indicators obtained through relevant sources of verification and compared to baseline information. Assumptions are reviewed regularly, following an adaptive management approach.

COLLECT EARTH

Collect Earth is a free, open source and user-friendly tool that allows the user to mine over 40 years of earth observation data to understand the dynamics of the landscape, including deforestation and land use change. This innovative tool was developed by FAO in partnership with Google Earth.

HOUSEHOLD SURVEYS

Household surveys are an efficient way to collect socio-economic data. Surveys are based on statistically representative samples of heads of households, and applying gender sensitive questionnaires adapted to the local context. They follow the Sustainable Livelihoods Framework, providing a comprehensive and integrated approach to understanding livelihood strategies and outcomes.

This document has been produced with the financial assistance of the European Union. The views expressed herein can in no way be taken to reflect the official opinion of the European Union.

www.fao.org/in-action/action-against-desertification

