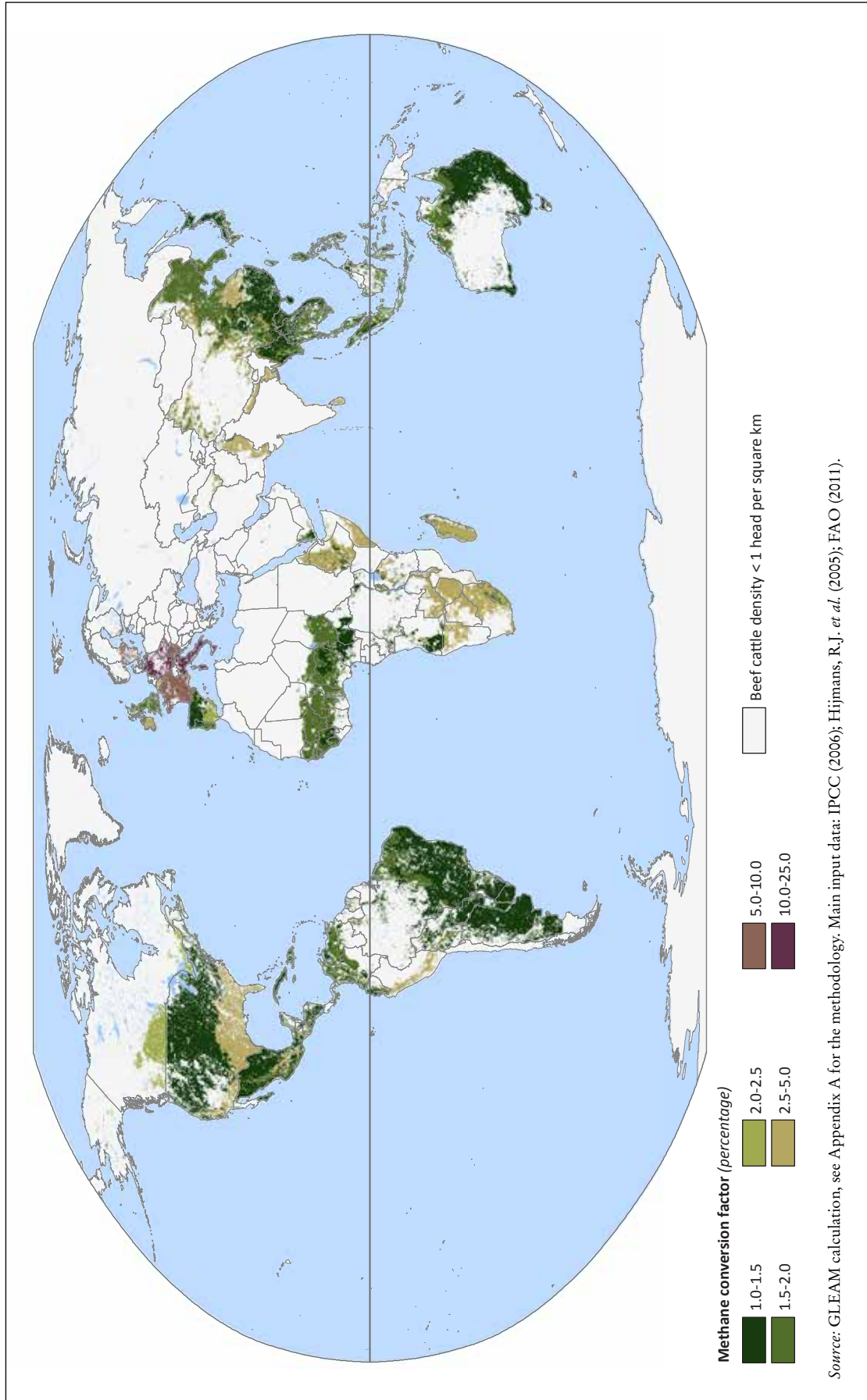
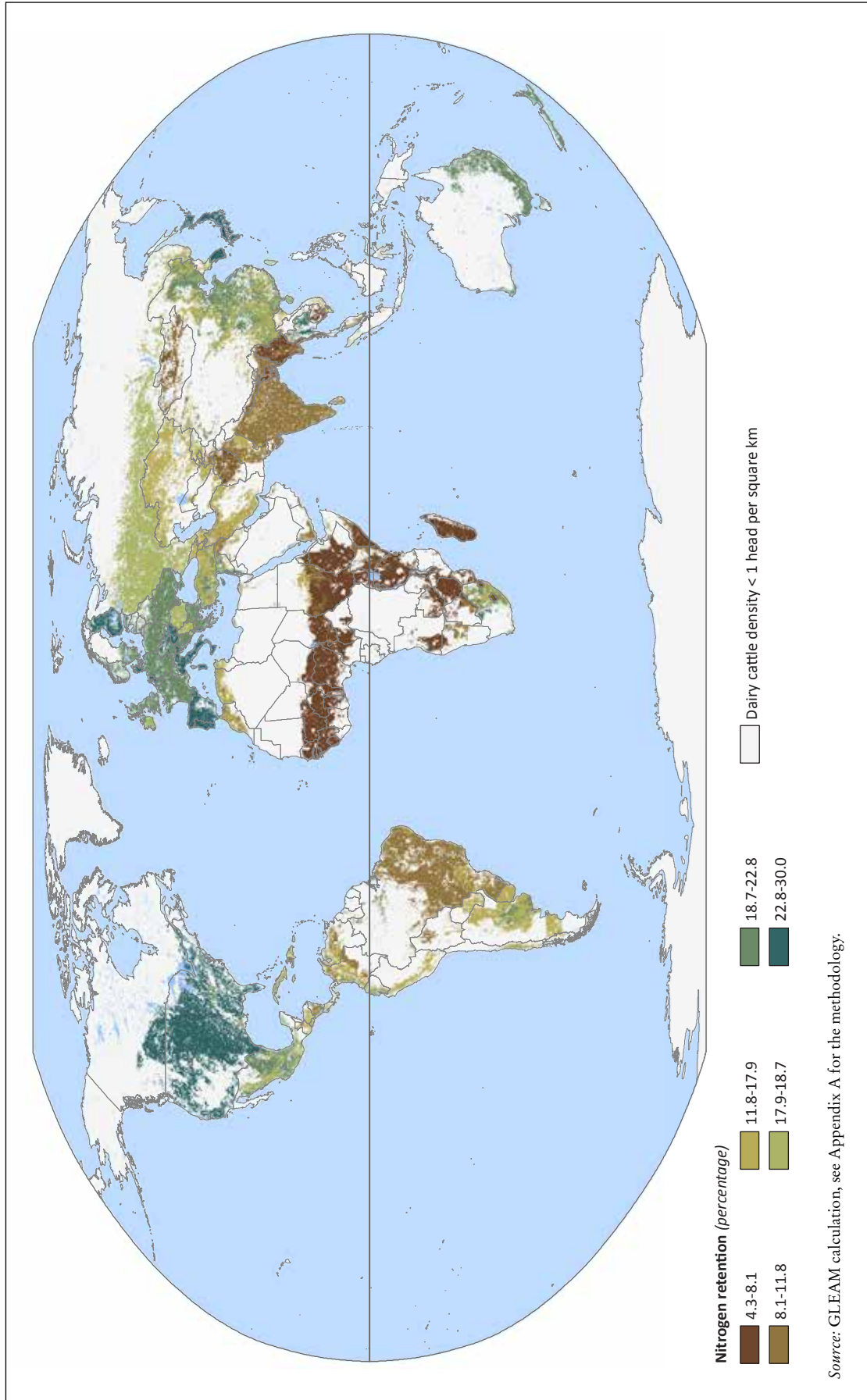


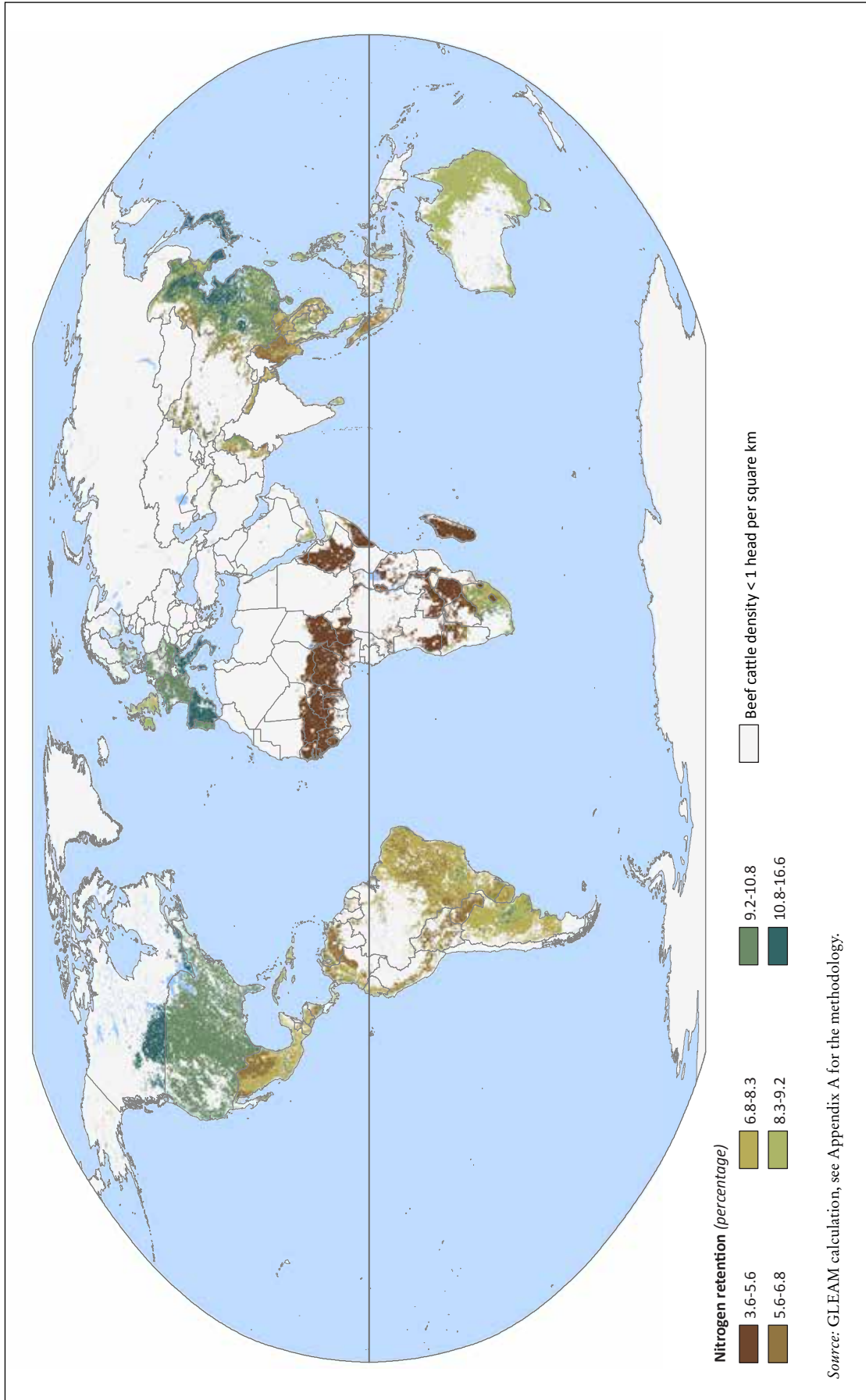
Map 10  
Manure methane conversion factor for beef cattle



Map 11  
Proportion of feed N retained in product – dairy cattle herds



Map 12  
Proportion of feed N retained in product – beef cattle herds



## REFERENCES

- FAO. 2007. *Gridded livestock of the world 2007* by Wint, W. & Robinson, T.P. FAO. Rome.
- FAO. 2011. *Global livestock production systems*, by Robinson, T.P., Thornton, P.K., Franceschini, G., Kruska, R.L., Chiozza, F., Notenbaert, A., Cecchi, G., Herrero, M., Epprecht, M., Fritz, S., You, L., Conchedda, G., & See, L. FAO. Rome.
- Haberl, H., Erb, K.-H., Krausmann, F., Gaube, V., Bondeau, A., Plutzer, C., Gingrich, S., Lucht W. & Fischer-Kowalski M. 2007. Quantifying and mapping the global human appropriation of net primary production in Earth's terrestrial ecosystem. *Proceedings of the National Academy of Sciences of the USA*. 104: 12942-12947.
- Hijmans, R.J., Cameron, S.E., Parra, J.L., Jones P.G. & Jarvis A. 2005. Very high resolution interpolated climate surfaces for global land areas. *International Journal of Climatology*, 25: 1965-1978.
- IPCC. 2006. IPCC guidelines for national greenhouse gas inventories. Prepared by the National Greenhouse Gas Inventories Programme, H. S. Eggleston, L. Buendia, K. Miwa, T. Ngara & K. Tanabe K. eds. IPCC. Kanagawa.
- You, L., Crespo, S., Guo, Z. Koo, J., Ojo, W., Sebastian, K., Tenorio, T.N., Wood, S. & Wood-Sichra, U. 2010. Spatial Production Allocation Model (SPAM) 2000, Version 3. Release 2. Available at <http://MapSPAM.info>.