

# Price Monitoring and Analysis Country Brief

## Pakistan

January-April 2011

### Key Messages

- In April, food prices stabilized after significant increases in recent months. High prices remain a major problem for the poor. Nominal rice price may soon approach the level observed in 2008.
- People affected by the flood last year are still recovering and continue to require emergency assistance. Different agencies are still concerned over their food security conditions.
- Recent conflict between government forces and insurgents has displaced thousands of people in the north western districts of Pakistan.
- The Government aimed at resuming wheat exports by lifting the wheat export ban.

### Background

Total population in Pakistan was around 169 million with an annual growth rate of 2%. The proportion of undernourishment is estimated at 26%.

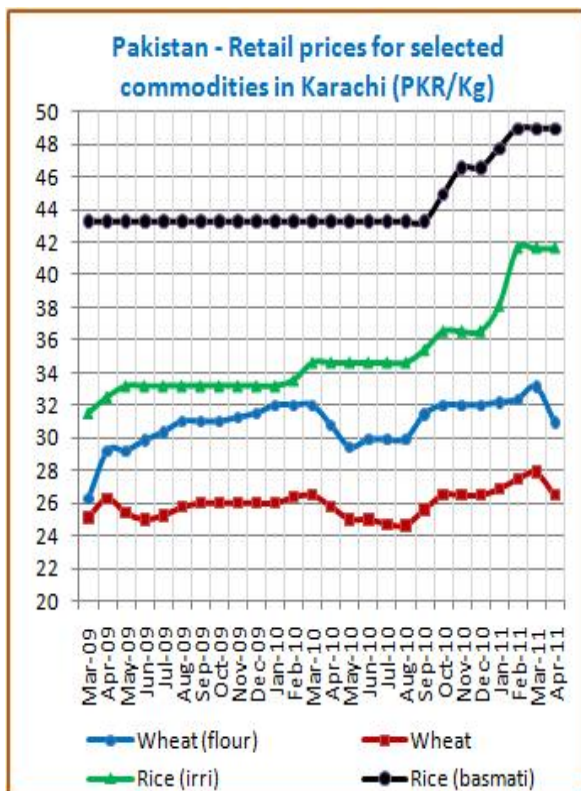
Economic Indicators	View Data
Total Population (millions) - 2009 (WB)	169.708
Population growth rate - 2009 (WB)	2%
GNI per capita, \$ PPP - 2009 (WB)	2680
Population below 1\$ PPP per day - 2005 (MDGI)	22%
Rural population - 2009 (WB)	63%
Agriculture, value added (% of GDP) - 2009 (WB)	21%

Food Consumption	
Undernourished Population - 2005/2007 (FAO)	26%
Cereal share in total dietary energy consumption - 2007 (FAO)	47%
Meat share in total dietary energy consumption - 2007 (FAO)	3%

Health Indicators	
Pop. with sustainable access to improved sanitation - 2008 (WHO)	45%
Life expectancy at birth (years) both sexes - 2008 (WHO)	63
Pop. with access to improved drinking water sources - 2008 (WHO)	90%
Prevalence of HIV among adults aged >= 15 years - 2009 (WHO)	0.1%

### Prices

Prices of wheat and wheat flour started to decline in April thanks to good 2011 wheat harvest prospects. In Karachi, in April, wheat prices (26.5) and wheat flour prices (30.96 PKR/Kg) declined by 5% and 7% respectively from March. In Lahore, prices were almost stable at around 27.3 PKR/Kg and 29.62 PKR/Kg respectively. Retail rice prices have risen by 9% between Jan and April in Karachi (41.62) while in Lahore prices increased by 7% to 43.33 PKR/Kg. In the food deficit region of Quetta, rice was stable at 38 and wheat flour at 31 PKR/Kg. As of March, in Karachi, wheat prices were 2% below the prices of Wheat N02 Hard Red Winter, and rice prices were 14% higher than prices of Rice Thai A1 Super.



Source: GIEWS Country Briefs

### Food Security Situation Assessment

The overall food supply situation in Pakistan has been satisfactory following the two consecutive years of good harvest. Food security has improved but remains a problem for some of the flood-affected population. The poor are also affected by high prices. Emergency relief assistance interventions are continuing in the hardest-hit districts where people are still unable to return to their homes. WFP and partners reached over 4.4 million people with food during the January/February 2011 cycle. During the current cycle of assistance WFP plans to reach approximately 2.5 million individuals in more than 30 of the worst-affected districts in Sindh, Punjab, KPK, Balochistan, AJK and Gilgit- Baltistan. GIEWS estimates severe localized food insecurity; FAO Hunger Map describes high prevalence of undernourishment while IFPRI Hunger Index suggests serious hunger.

#### CURRENT EMERGENCY ASSESSMENT

Exceptional shortfall in aggregate food production supplies	Widespread lack of access	Severe localized food insecurity	<a href="#">FAO/GIEWS CPFS 2010</a>
---	---------------------------	----------------------------------	-------------------------------------

Pakistan is not covered by FEWSNET. FEWSNET coverage is limited 14 African countries 1 Caribbean (Haiti) and 1 Central Asia (Afghanistan). Food security status is given for different parts of the country in each case. [FEWSNET](#)

#### SCALE OF HUNGER (% of Undernourishment)

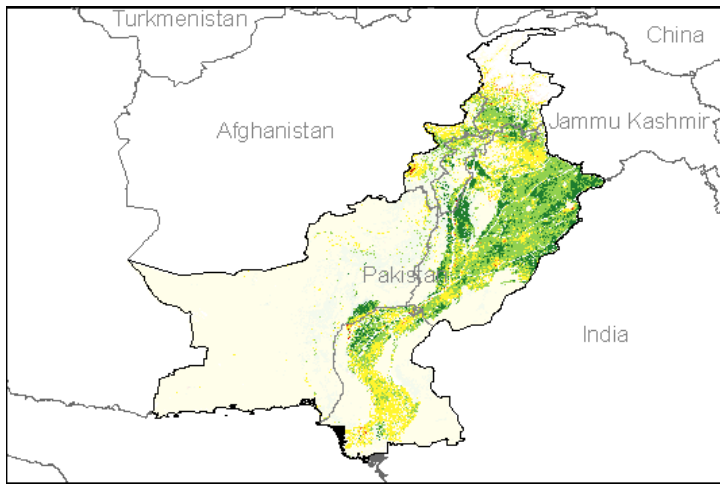
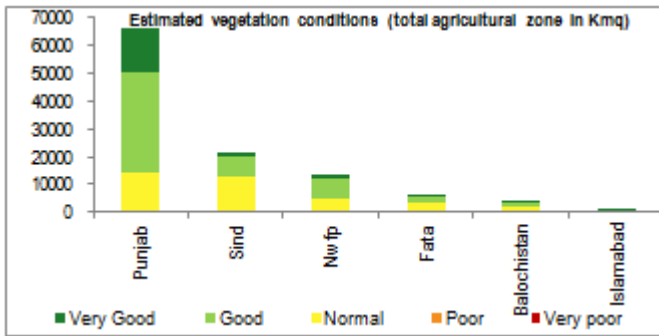
Very high (>= 35%)	High (25-34%)	Moderately high (15-24%)	Moderately low (5-14%)	Very low (< 5% under.)	<a href="#">FAO Hunger Map</a>
--------------------	---------------	--------------------------	------------------------	------------------------	--------------------------------

FAO Hunger Map classifies all countries of the world into five based on % of population undernourished.

Extremely alarming	Alarming	Serious	Moderate	Low	<a href="#">IFPRI/2010 GHI</a>
--------------------	----------	---------	----------	-----	--------------------------------

### Vegetation Condition

At the end of the winter season, normal to very good conditions are observed. The indicator of vegetation condition provided below is the relative difference between the NDVI for April 2011 and the average of the last 10 years on the agricultural zones derived from the GLOBCOVER 2005 database (ESA).



Source: JRC MARS – FoodSec

### Crop phase in the reference period

<b>Sowing</b>	Maize - Potatoes - Sugarcane
<b>Growing</b>	Barley - Potatoes - Sugarcane - Wheat (Winter)
<b>Harvesting</b>	Barley - Potatoes - Wheat (Winter)

### Natural Disasters, Drought and Conflicts

Waves of violence and insecurity persist in northwest Pakistan where government military operations against insurgents have displaced thousands of people.

Refugees and IDPs	2007	2008	2009
Total in the country	2038154	1939700	4744098
Total outside the country	40477	194471	3040845

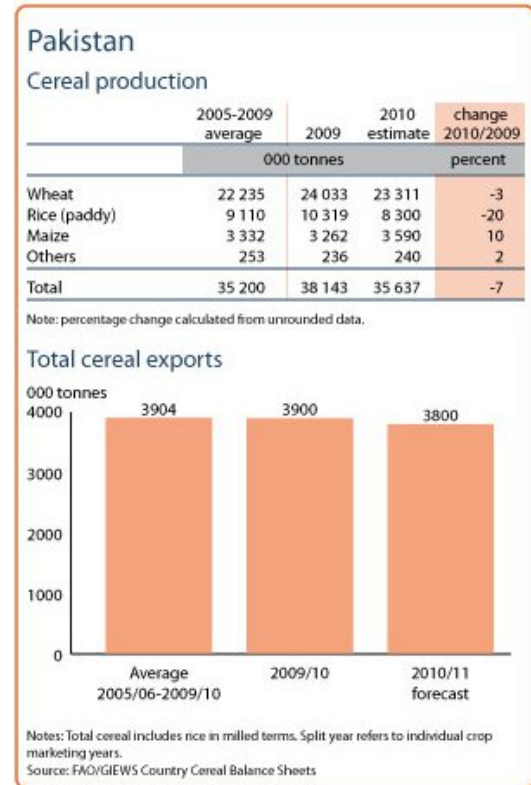
Source: UNHCR Statistical Online Population Database, United Nations High Commissioner for Refugees (UNHCR), Data extracted on 01/12/2010.

Disaster Type (last year)	Date	Location	Alert
Earthquake	2011-04-25	North-west Frontier Province	1/3
Earthquake	2011-02-09	Northern Areas Province	1/3
Flood	2010-07-27	Rawalpindi	3/3

Source: Global Disaster Alert and Coordination System - 3 = 1000 or more people killed or 800000 or more people displaced. 2 = 100 or more people killed or 80000 or more displaced.

### Food Balance Sheet

FAO's early forecast for 2011 wheat production is 24 million tonnes, slightly above last year's good harvest and close to the 2009 record crop. The 2010 paddy production is officially estimated at 8.3 million tonnes, representing a drop of 20% from the previous year. Total 2010 cereal production is estimated at 35.6 mln T, some 7% below the 2009 output (38.15 mln T) and some 4% below the 5 year average. By March exports were at 1 mlnT.



Source: GIEWS Country Briefs

### Government Policies

The government has lifted the three years export ban on wheat. International agencies are assisting the population with food transfers. WFP continues to provide food assistance to people affected by conflicts.

Consumer and market oriented measures	n.a.
Producer oriented measures	n.a.
Trade policy measures	Lifted wheat export ban
Safety net (increased or introduced)	Food transfers

Different sources

### Current events to watch (Click to see the full report)

[PRCS Monsoon Floods Operation](#)  
[OCHA ROMENACA Regional Humanitarian Update April 2011](#)  
[Cooperation: Pakistan, new post-flood aid](#)  
[Refugees and the regional dynamics of peacebuilding](#)  
[Militants attack Pakistan checkpoint, two dead](#)

For more information, contact: [Information-for-action@fao.org](mailto:Information-for-action@fao.org)  
 Website: [www.foodsec.org](http://www.foodsec.org)

Powered By the [GIEWS Workstation](#)