

## Price Monitoring and Analysis Country Brief

**Guinea**

September 2011 - February 2012

### Key Messages

- Rice prices have followed an upward trend, seriously constraining access of poor urban and rural populations, to food.
- An estimated 600,000 people are classified as severely food insecure with an additional 1.7 million people considered at risk of food insecurity.
- The political situation in the country is considered still tense.
- There are no government policies in the agricultural sector reported in the reference period.

### Background

The total population of Guinea is around 10 million with an annual growth rate of 2%; of these 70% lives with less than 1\$ per day and 16% is estimated to be undernourished. Although the rural population is 64%, the agricultural value added to GDP is 13%.

Economic Indicators	<a href="#">View Data</a>
Total Population (millions) - 2010 (WB)	9.981
Population growth rate - 2010 (WB)	2%
GNI per capita, \$ PPP - 2010 (WB)	1020
Population below 1\$ PPP per day - 2003 (MDGI)	70%
Rural population - 2010 (WB)	64%
Agriculture, value added (% of GDP) - 2010 (WB)	13%

Food Consumption	
Undernourished Population - 2006/2008(FAO)	16%
Cereal share in total dietary energy consumption - 2007 (FAO)	47%
Meat share in total dietary energy consumption	n.a.

Health Indicators	
Pop. with sustainable access to improved sanitation - 2008 (WHO)	19%
Life expectancy at birth (years) both sexes - 2009 (WHO)	52
Pop. with access to improved drinking water sources - 2008 (WHO)	71%
Prevalence of HIV among adults aged >= 15 years - 2009 (WHO)	1.3%

### Prices

In spite of the good harvest, access to food continues to be negatively affected from high prices and inflation rates. Following a strong depreciation of the Guinea Franc, rice prices have generally been following an upward trend, fuelling inflation and seriously eroding the purchasing power and access to food of both the urban and rural population. Consumer price inflation is estimated to have reached 20% in 2010 and 16% in 2011, driven by a renewed and rapid depreciation of the Guinean franc and continuing rise in rice prices.

No recent price data are available.

### Food Security Situation Assessment






Large numbers of people are exposed to chronic food insecurity and malnutrition. According to the WFP's latest detailed survey of food security and vulnerability, about 600,000 people located mostly in Kindia, Labe and N'Zerekore regions suffer from severe food insecurity, while an additional 1.7 million are considered at risk. GIEWS reports severe localized food insecurity. FAO hunger map estimates moderately low hunger levels while IFPRI GHI depicts a situation of serious hunger.

#### CURRENT EMERGENCY ASSESSMENT

			<a href="#">FAO/GIEWS CPFS 2011</a>
Exceptional shortfall in aggregate food production supplies	Widespread lack of access	Severe localized food insecurity	

Guinea is not covered by FEWSNET. FEWSNET coverage is limited 14 African countries 1 Caribbean (Haiti) and 1 Central Asia (Afghanistan). Food security status is given for different parts of the country in each case. [FEWSNET](#)

#### SCALE OF HUNGER (% of Undernourishment)

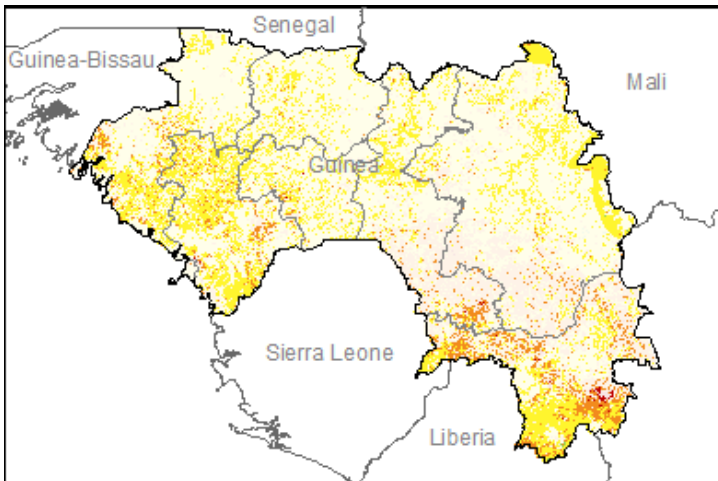
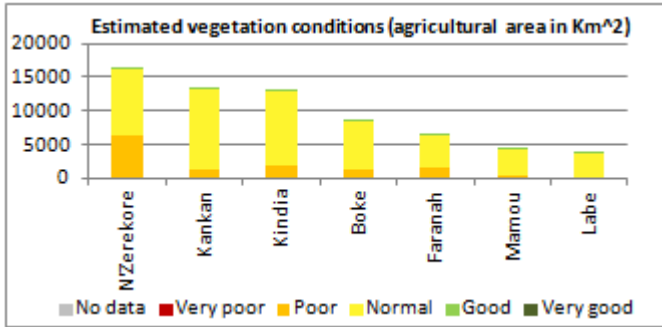
					<a href="#">FAO Hunger Map</a>
Very high (>= 35%)	High (25-34%)	Moderately high (15-24%)	Moderately low (5-14%)	Very low (< 5% under.)	

FAO Hunger Map classifies all countries of the world into five based on % of population undernourished.

					<a href="#">IFPRI/2011 GHI</a>
Extremely alarming	Alarming	Serious	Moderate	Low	

### Vegetation Condition

According to the reference cropping calendars, at the moment this area is out of cropping season. Normal conditions are observed throughout the country except in N'Zerekore where conditions are normal to poor. The general indicator of vegetation condition provided below is the absolute difference between the NDVI for February 2012 and the average of the last 10 years, calculated on the agricultural zones derived from the GLOBCOVER 2005 database (ESA).



Source: JRC MARS – FoodSec

#### Crop phase in the reference period

<b>Sowing</b>	No crops are sowed during the reference period
<b>Growing</b>	Cassava (first year)
<b>Harvesting</b>	Maize - Millet - Rice - Sorghum - Yams

### Natural Disasters, Drought and Conflicts

The political situation in the country is still tense. In early September 2011, deadly riots took place over preparations for an upcoming legislative poll scheduled for December 2011.

Refugees and IDPs	2008	2009	2010
Total in the country	22125	16254	14878
Total outside the country	11517	13749	14562

Source: UNHCR Statistical Online Population Database, United Nations High Commissioner for Refugees (UNHCR), Data extracted on 01/03/2012.

### Food Balance Sheet

Aggregate 2011 cereal production is estimated to have increased by about 16% to 3.3 million tonnes compared to 2010 and 31% compared to the five year average. Import requirements for 2011/12 were forecast at 497,000 tonnes while actual imports in 2010/11 were estimated at 487,000 tonnes.

Guinea				
Cereal production				
	2006-2010 average	2010	2011 estimate	change 2011/2010
	000 tonnes			percent
Rice (paddy)	1 460	1 604	1 664	4
Maize	577	584	757	30
Cereals nes	288	384	429	12
Others	202	279	451	62
<b>Total</b>	<b>2 527</b>	<b>2 851</b>	<b>3 301</b>	<b>16</b>

Note: percentage change calculated from unrounded data.  
Source: FAO/GIEWS Country Cereal Balance Sheets

Source: GIEWS Country Briefs

### Government Policies

No government measures have been reported, for the agriculture and food sector particularly due to political turmoil in the country.

Consumer and market oriented measures	n.a.
Producer oriented measures	n.a.
Trade policy measures	n.a.
Safety net (increased or introduced)	n.a.

Different sources

#### Current events to watch (Click to see the full report)

[Benin: Rapport sur la sécurité humaine dans l'espace C...](#)  
[Guinea: Nos organisations attendent des engagements fo...](#)  
[Guinea: Japan to support youth employment in Guinea by...](#)  
[Guinea: Cholera outbreak in Guinea kills 14: source](#)  
[Benin: Note d'information Sécurité Alimentaire - NISA...](#)

For more information, contact: [Information-for-action@fao.org](mailto:Information-for-action@fao.org)  
 Website: [www.foodsec.org](http://www.foodsec.org)

Powered By the **GIEWS Workstation**

The Programme on Linking Information and Decision Making to Improve Food Security is funded by the European Union and implemented by the Food and Agriculture Organization of the United Nations.