

An assessment of land degradation was carried out following the UNCCD’s Good Practice Guidance (GPG) version 2 for the SDG Indicator 15.3.1 (Proportion of land that is degraded over total land area) for Gedaref state in Sudan for the period of 2016 - 2022. Using the default parameters in the SEPAL SDG 15.3.1 module, one out all out statistical principle was used to combine all the sub-indicators of productivity, land cover and soil organic carbon. Percentages of land degraded within the water sheds located in the state were computed.

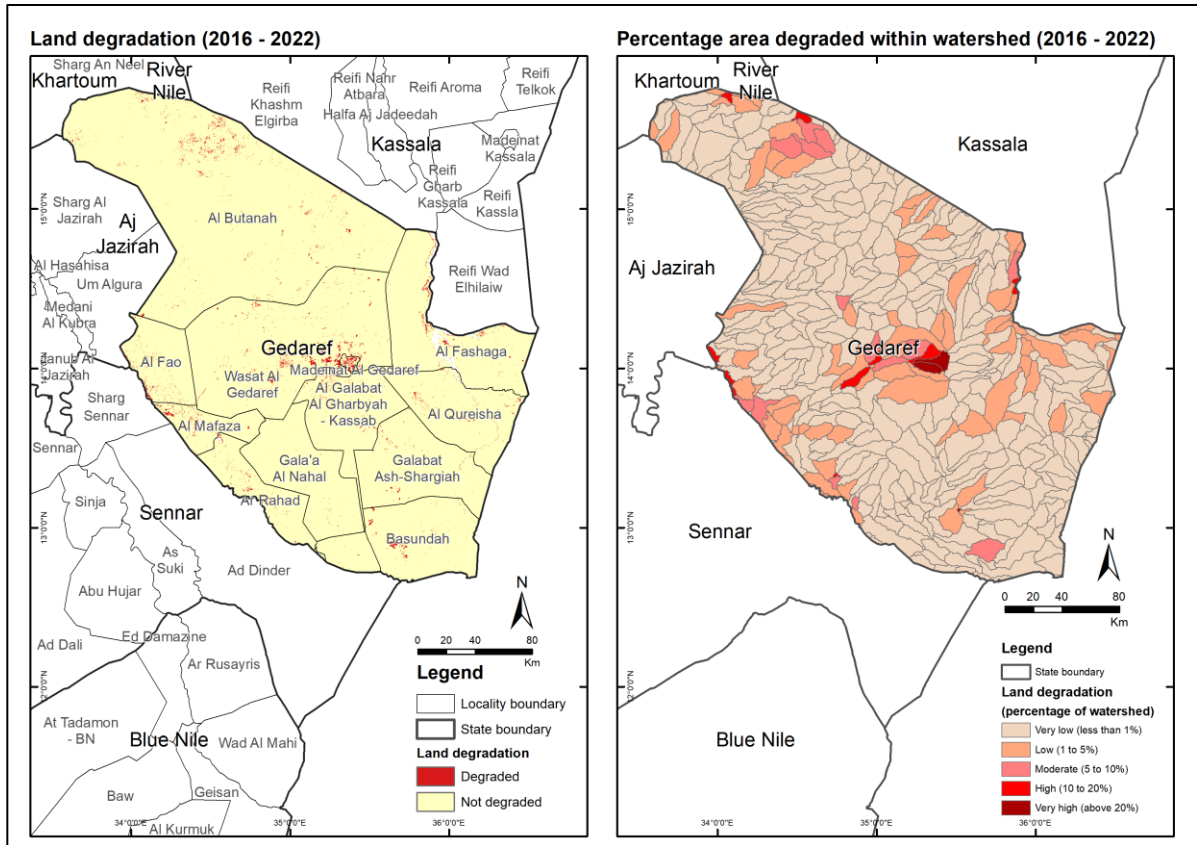


Figure 1: Status of land degradation in during 2016 to 2022¹

Table 1: Land degradation statistics

Degradation level	Number of watershed	Total area (km ²)	Degraded area	
			km ²	% of total
Very low (less than 1% area degraded)	374	52 943	90	0.2
Low (1 to 5% area degraded)	79	12 727	256	2.0
Moderate (5 to 10% area degraded)	15	2 199	158	7.2
High (10 to 20% area degraded)	12	1 066	138	12.9
Very high (above 20% area degraded)	3	236	57	24.1
Total	483	69 172	699	1.0

Key Findings

- From 2016 to 2022, total 699 km² of land were degraded in Gedaref state.
- Three watersheds were found to experience very high land degradation where more than 20% of the area were degraded during 2016 to 2022.

Prepared by Rashed Jalal, Amit Ghosh, Vineet Kumar, Rutendo Mukaratirwa, Fatima Mushtaq, Kennedy Igbokwe and Matieu Henry in support to Sudan smallholders and agro pastoralist value chain support in the face of climate change (GCP/SUD/098/NOR), Food and Agriculture Organization of United Nations, Rome, Italy.

¹ Source: Administrative boundaries from HDX and watershed boundaries from HydroSHEDS. The boundaries and names shown, and the designations used on these map(s) do not express any opinion whatsoever on the part of FAO concerning the legal status of any country, territory, city or area or of its authorities, or concerning the delimitation of its frontiers and boundaries. Final boundary between the Republic of Sudan and the Republic of South Sudan has not yet been determined. Dashed lines on maps represent approximate border lines for which there may not yet be full agreement.