

Socio-economic effects of using timber harvested in forest development sites

Seung-kyun Kim

Wood Industry Division, Korea Forestry Promotion Institute(KoFPI)

1. Introduction

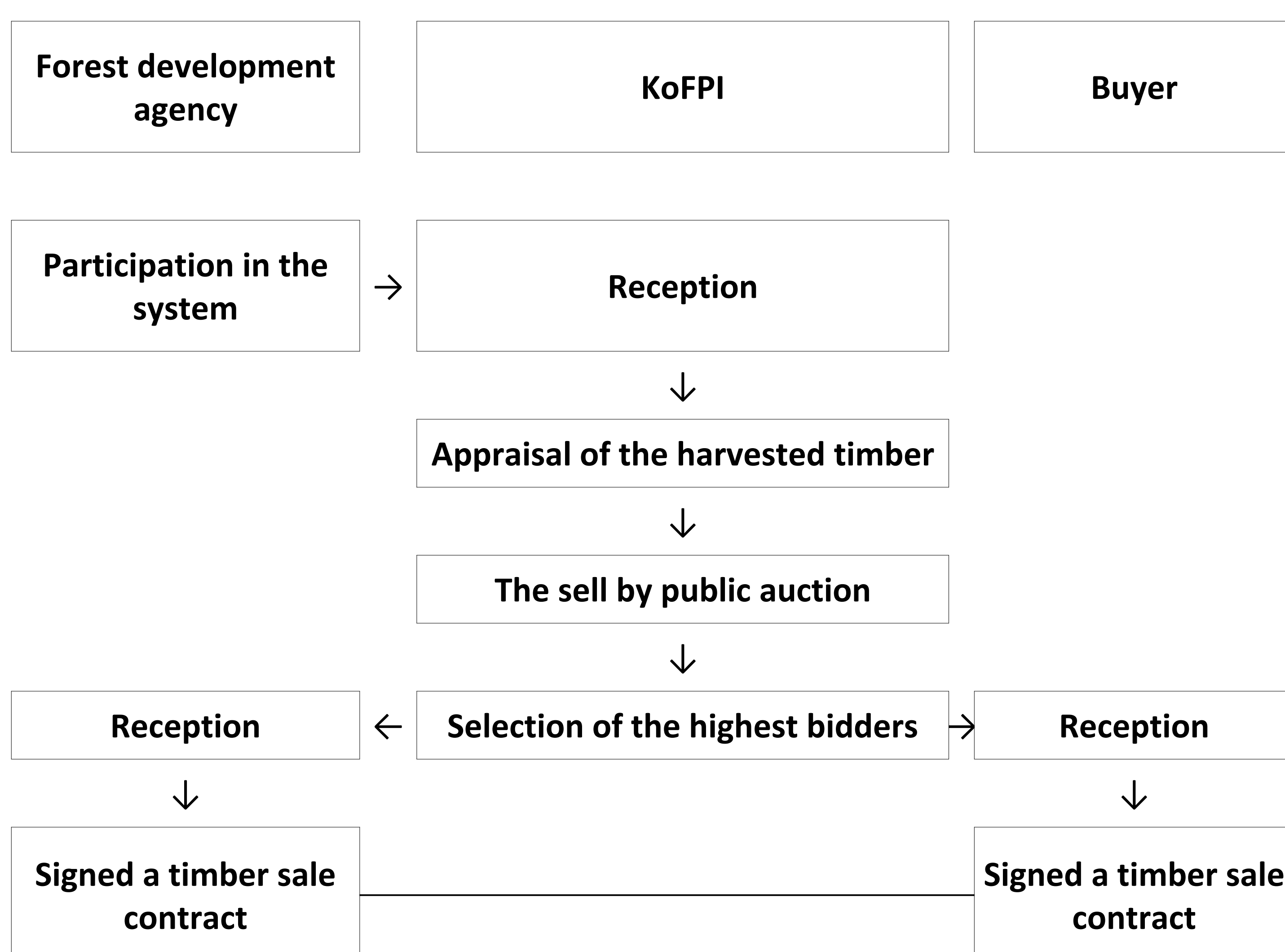
In S.korea, a resource-poor country, forest developments have been continuous for industrial development and economic growth. In 2019, about 7,000 ha of forest are developed for construction of roads, factories, etc. Timber harvested in these sites are about 1,44 million tons per year*. In the past, 97% of timber harvested in forest development sites were treated as waste, and the remaining 3% were transplanted into landscape trees. In 2017, a system(the sell by public auction) for the utilization of timber harvested in forest development sites was established, and that operated by Korea Forestry Promotion Institute(KoFPI).

* Ministry of Land, Infrastructure, and Transport of S.Korea(2015)

2. Object of the System

- Supporting wood resource supply through recycling of waste timber.
- Reduction of disposal costs through the sale of waste timber.

3. Procedure of the system



4. Conclusion

- Totally, 73,084 tons of timber harvested in forest development sites have been sold by public auction, it generated about USD 7.2 million in socio-economic value, including sales revenue and reduction of waste treatment costs.
- Due to these effects, the sales volume of waste timber generated by forest development sites is increasing every year.
- As a specialized organization for the promotion of the wood industry, The KoFPI is contributing to increasing the use of wood and revitalizing the wood industry by utilizing waste wood resources.

4. The state of the system

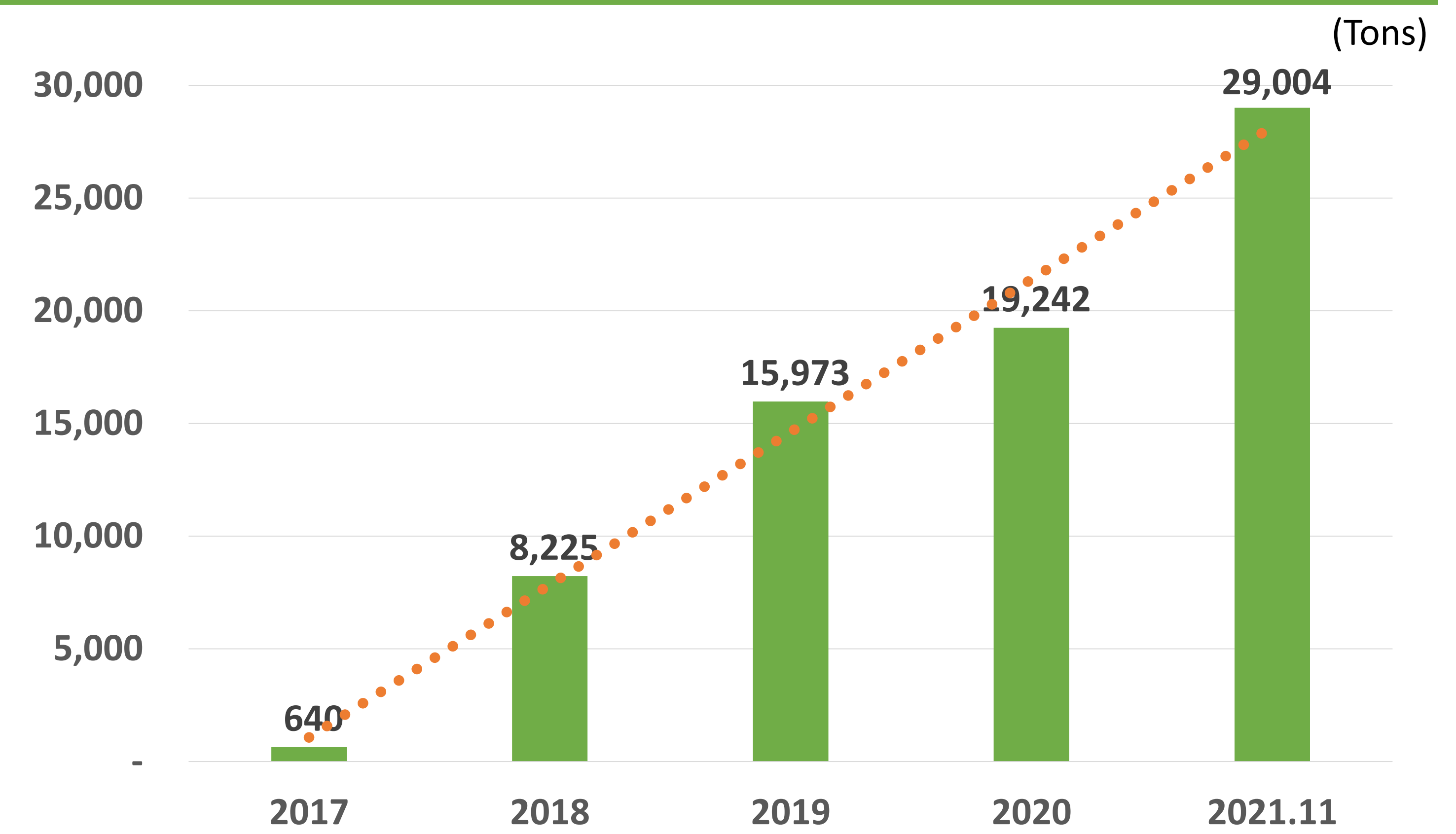


Fig 1. Annual Status of waste timber sales generated by forest developments.

5. Socio-economic effects of waste timber recycling

Table. Calculation of Socio-economic costs through the sale of waste timber.

	2017	2018	2019	2020	2021.11
Sales revenues (Earning costs, A)	39,019	303,030	570,502	668,195	1,391,429
Waste treatment costs (Saved costs, B)	37,023	475,798	924,002	1,113,106	1,677,815
Socio-economic costs (A+B)	76,042	778,827	1,494,503	1,781,301	3,069,244

* 1 USD = 1.175.50 KRW('21.11)

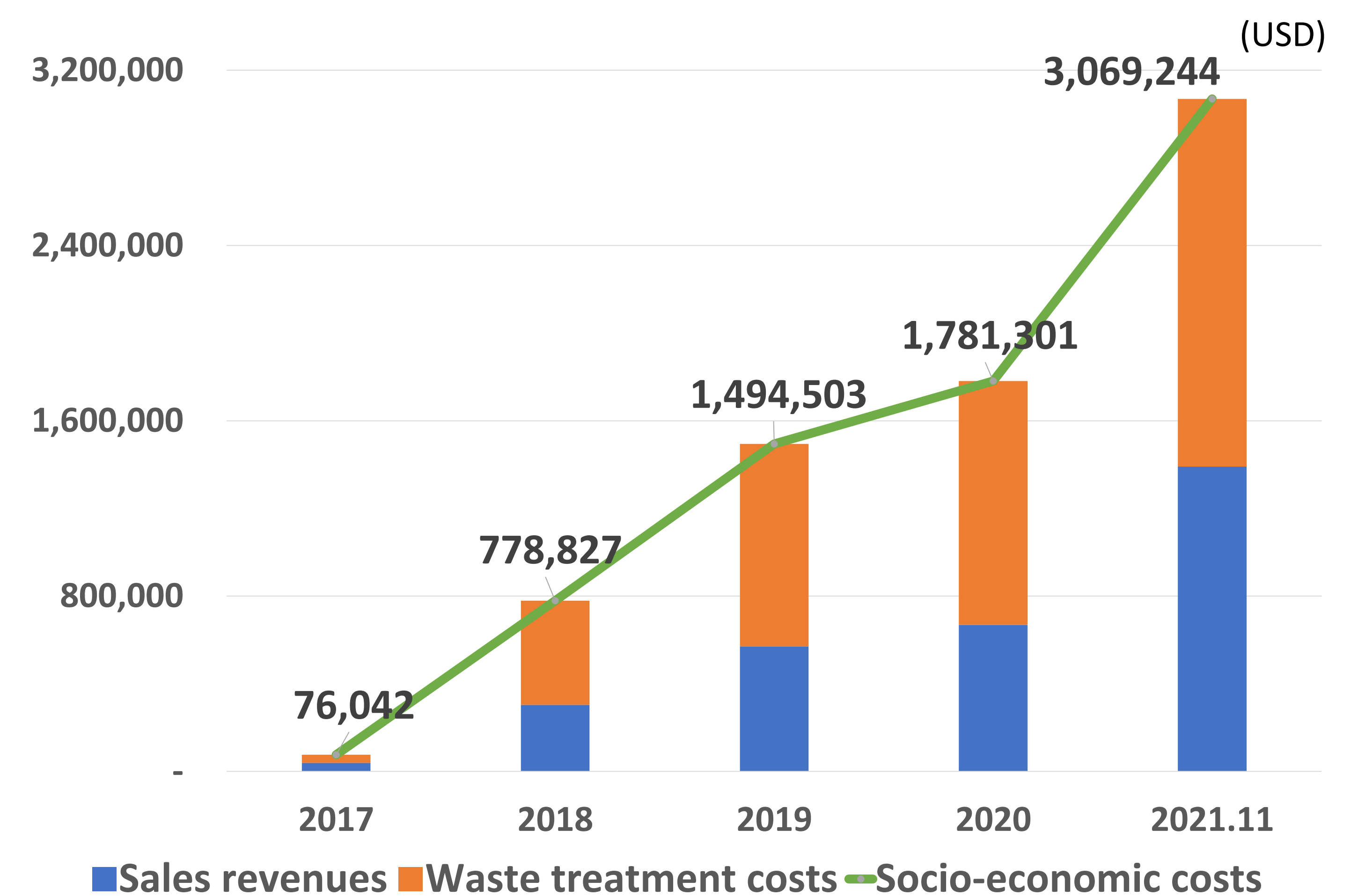


Fig 2. Socio-economic effects of using timber harvested in forest development sites.