

Price Monitoring and Analysis Country Brief

Pakistan

September-December 2010

Key Messages

- Food prices have increased and then stabilized in the past two months, but impacts on food consumption of the vulnerable population are still expected to be substantial.
- Whereas the emergency situation due to floods in July/August is still not over in parts of Sindh province, other districts have started the return and recovery process of displaced families.
- Agencies share concerns over a severe food security situation where emergency food assistance is still heavily required.
- The Government is assisting the population hit by the flood through distribution of cards, seeds and fertilizer with the support of international agencies which also provide agricultural inputs and food aid.

Background

Total population in Pakistan was around 169 million with an annual growth rate of 2%. The proportion of undernourishment is estimated at 26%.

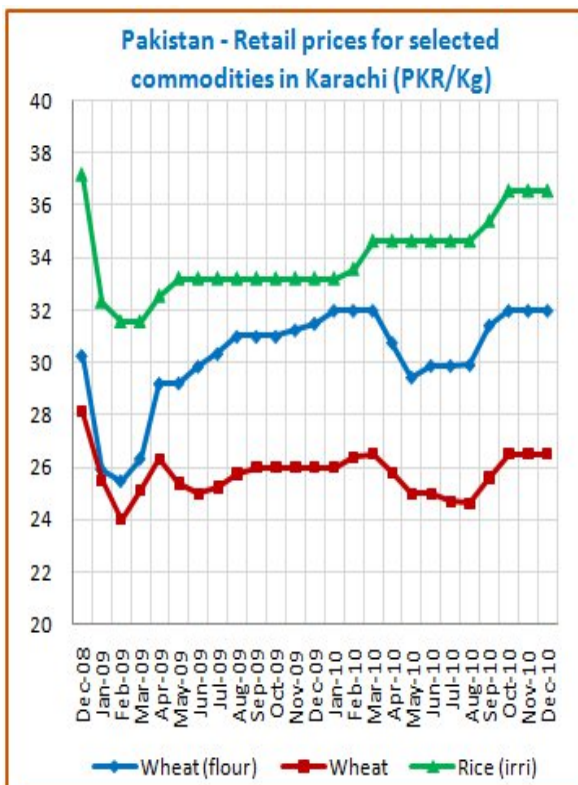
Economic Indicators	View Data
Total Population (millions) - 2009 (WB)	169.708
Population growth rate - 2009 (WB)	2%
GNI per capita, \$ PPP - 2009 (WB)	2680
Population below 1\$ PPP per day - 2005 (MDGI)	22%
Rural population - 2009 (WB)	63%
Agriculture, value added (% of GDP) - 2009 (WB)	21%

Food Consumption	
Undernourished Population - 2005/2007 (FAO)	26%
Cereal share in total dietary energy consumption - 2007 (FAO)	47%
Meat share in total dietary energy consumption - 2007 (FAO)	3%

Health Indicators	
Pop. with sustainable access to improved sanitation - 2008 (WHO)	45%
Life expectancy at birth (years) both sexes - 2008 (WHO)	63
Pop. with access to improved drinking water sources - 2008 (WHO)	90%
Prevalence of HIV among adults aged >= 15 years - 2009 (WHO)	0.1%

Prices

Wheat prices increased in Sept and then stabilized in recent months. This rise is due to higher demand from Afghanistan and the uncertainty of planting the new crop due to damage caused by the floods. Wheat flour prices increased slightly from Sept in Karachi (31.43 PKR/Kg) and in Lahore (28.36), and then stabilized in Oct/Nov/Dec, quoting around 32 in Karachi and 29.62 in Lahore. In Karachi rice prices have also stabilized in recent months and irri rice was sold at 36.54 PKR/Kg through Dec; in Lahore prices remained stable at 36.93 (Sept/Dec). Wheat prices in Karachi (306.72 USD/tonnes) were about 6% lower than the international prices of Wheat No2 Hard Red Winter (327.25/tonnes) in Dec.



Source: [GIEWS National basic food prices data and analysis tool](#)

Food Security Situation Assessment

Flooding in July/August which affected some 20 million people, causing damage to housing, infrastructure and crops has caused severe food insecurity. Around 10 million of the flood-stricken population required emergency food assistance. GIEWS describes severe localized food insecurity. According to FAO estimates, the country is facing high undernourishment levels while IFPRI reports the problem of hunger as serious.

CURRENT EMERGENCY ASSESSMENT

Exceptional shortfall in aggregate food production supplies	Widespread lack of access	Severe localized food insecurity	FAO/GIEWS CPFS 2010
---	---------------------------	----------------------------------	-------------------------------------

Pakistan is not covered by FEWSNET. [FEWSNET](#)

SCALE OF HUNGER (% of Undernourishment)

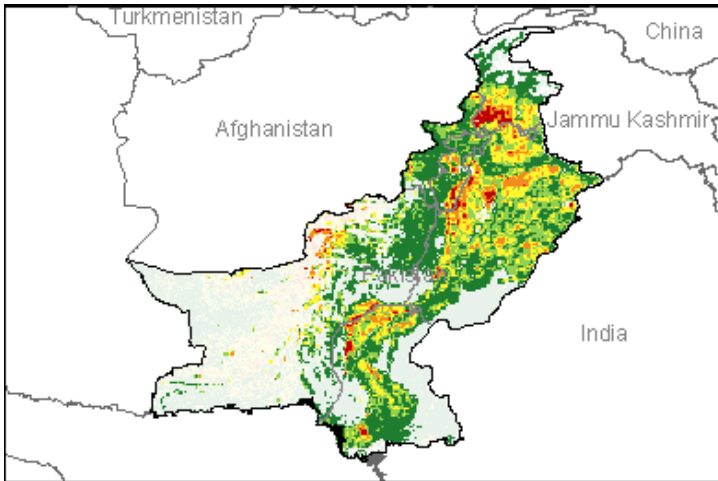
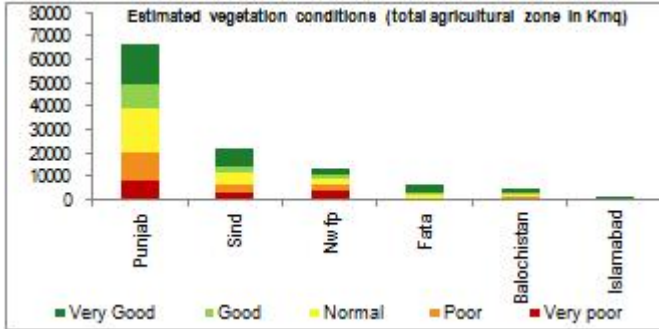
Very high (>= 35%)	High (25-34%)	Moderately high (15-24%)	Moderately low (5-14%)	Very low (< 5% under.)	FAO Hunger Map
--------------------	---------------	--------------------------	------------------------	------------------------	--------------------------------

FAO Hunger Map classifies all countries of the world into five based on % of population undernourished.

Extremely alarming	Alarming	Serious	Moderate	Low	IFPRI/2010 GHI
--------------------	----------	---------	----------	-----	--------------------------------

Vegetation Condition

At the middle of the winter season, very contrasted situation is observed ranging from very poor to very good condition with possible concerns in the provinces of Punjab, Sind and Nwfp. The indicator of vegetation condition provided below is the relative difference between the NDVI for December 2010 and the average of the last 10 years on the agricultural zones derived from the GLOBCOVER 2005 database (ESA).



Source: [JRC MARS – FoodSec](#)

Crop phase in the reference period

- Sowing Wheat (Winter)
- Growing Barley
- Harvesting Rice

Natural Disasters, Drought and Conflicts

In the southern province of Sindh, large areas remain under floodwater. According to WFP, about a million people were still living in camps in Nov. In Punjab and Balochistan, displaced families are returning home and need the critical support for recovery. In the northern Khyber Pakhtunkhwa (KPK) province, recovery has already begun and WFP is providing food for work for 90,000 of the most vulnerable beneficiaries.

Refugees and IDPs	2007	2008	2009
Total in the country	2038154	1939700	4744098
Total outside the country	40477	194471	3040845

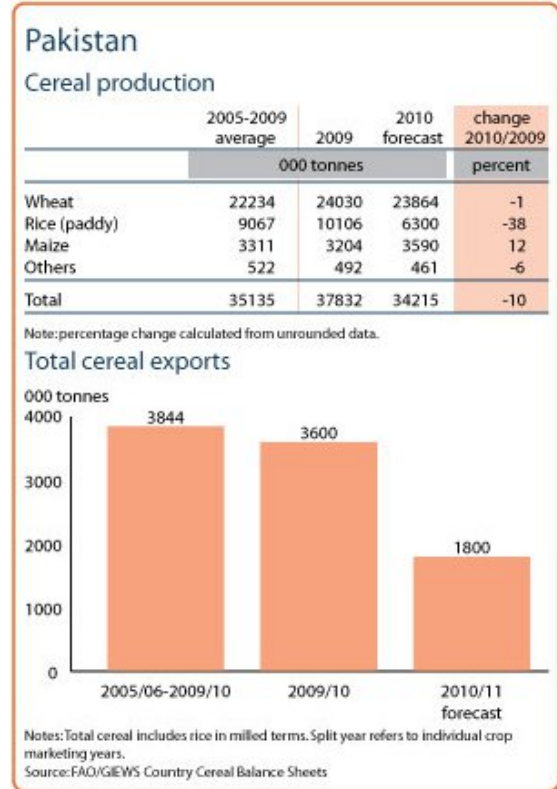
Source: [UNHCR Statistical Online Population Database](#), United Nations High Commissioner for Refugees (UNHCR), Data extracted on 01/12/2010.

Disaster Type (last year)	Date	Location	Alert
Earthquake	2011-01-07	Baluchistan Province	1/3
Earthquake	2011-01-04	Baluchistan Province	1/3
Flood	2010-07-27	Rawalpindi	3/3

Source: [Global Disaster Alert and Coordination System](#) - 3 = 1000 or more people killed or 800000 or more people displaced. 2 = 100 or more people killed or 80000 or more displaced.

Food Balance Sheet

Estimates put 2010 paddy crop at 6.3 mln tonnes, 38% drop from 2009 output (10 mlnT). The 2010 total production was forecast at 34.21 mlnT, some 10% lower than 2009 production (37,83 mlnT) and 3% lower than the five year average (35 mlnT). Total 2010/11 net cereal exports were forecast at 1.8 mln T, some 50% below the record level of the previous year (3.6 mln T).



Source: [GIEWS Country Briefs](#)

Government Policies

The Gvmt assisted flood hit families with distribution of Watan cards for payment of Rs 20,000 to start reconstruction, and provision of free fertilizers and seeds to farmers. FAO has also provided agricultural inputs and other support to over half a million households during the Rabi season. WFP is assisting 7 mln people with monthly food aid rations and some 5 mln people will get a return package to start their recovery process.

Consumer and market oriented measures	n.a.
Producer oriented measures	Free fertilizers and seeds distribution.
Trade policy measures	n.a.
Safety net (increased or introduced)	Card for payment.

Different sources

Current events to watch (Click to see the full report)

- [Pakistan: Swat, six months after the flood](#)
- [Pakistan: Situation in Sindh](#)
- [Pakistan: Still struggling six months after the floods](#)
- [Pakistan: DSP among six killed in blasts](#)
- [Red Cross warns of Pakistan social unrest](#)

For more information, contact: Information-for-action@fao.org
Website: www.foodsec.org

Powered By the [GIEWS Workstation](#)