



# Forest and landscape restoration: UNEP's ongoing activities + some perspectives on monitoring

**Drylands & Forest and Landscape Restoration (FLR) Monitoring Week**  
**FAO Headquarters, Rome, 26-29 April 2016**

Lisen Runsten  
Consultant, UNEP UN-REDD



# Some recent and ongoing activities

- IUCN-UNEP collaborative initiative: GPFLR + UN-REDD Programme
- The Restoration Initiative (TRI)
- UN-REDD restoration mapping work
- Emissions Gap Report - estimating mitigation potential from forest restoration

# IUCN-UNEP collaborative initiative

Brings together the UN-REDD Programme and the Global Partnership on Forest Landscape Restoration (GPFLR)

Currently supporting Panama, Côte d'Ivoire, Uganda and Nepal ROAM assessments

To generate:

- Helpdesk function for assessments of forest restoration opportunities
- A global mapping database for carbon and non-carbon benefits of forest restoration efforts

# The Restoration Initiative (TRI)

- IUCN, FAO and UNEP implemented GEF program to restore and maintain degraded and deforested landscapes at scale
- Hopefully approved next week
- Will unite ten countries with up-to-date technical knowledge and innovative financing tools in support of the Bonn Challenge
- Common challenges - insufficient:
  - Political momentum
  - Awareness of restoration opportunities and approaches
  - Investment environment
  - Governance, gender and land tenure frameworks
  - Planning and management capacity
  - Mobilization of resources

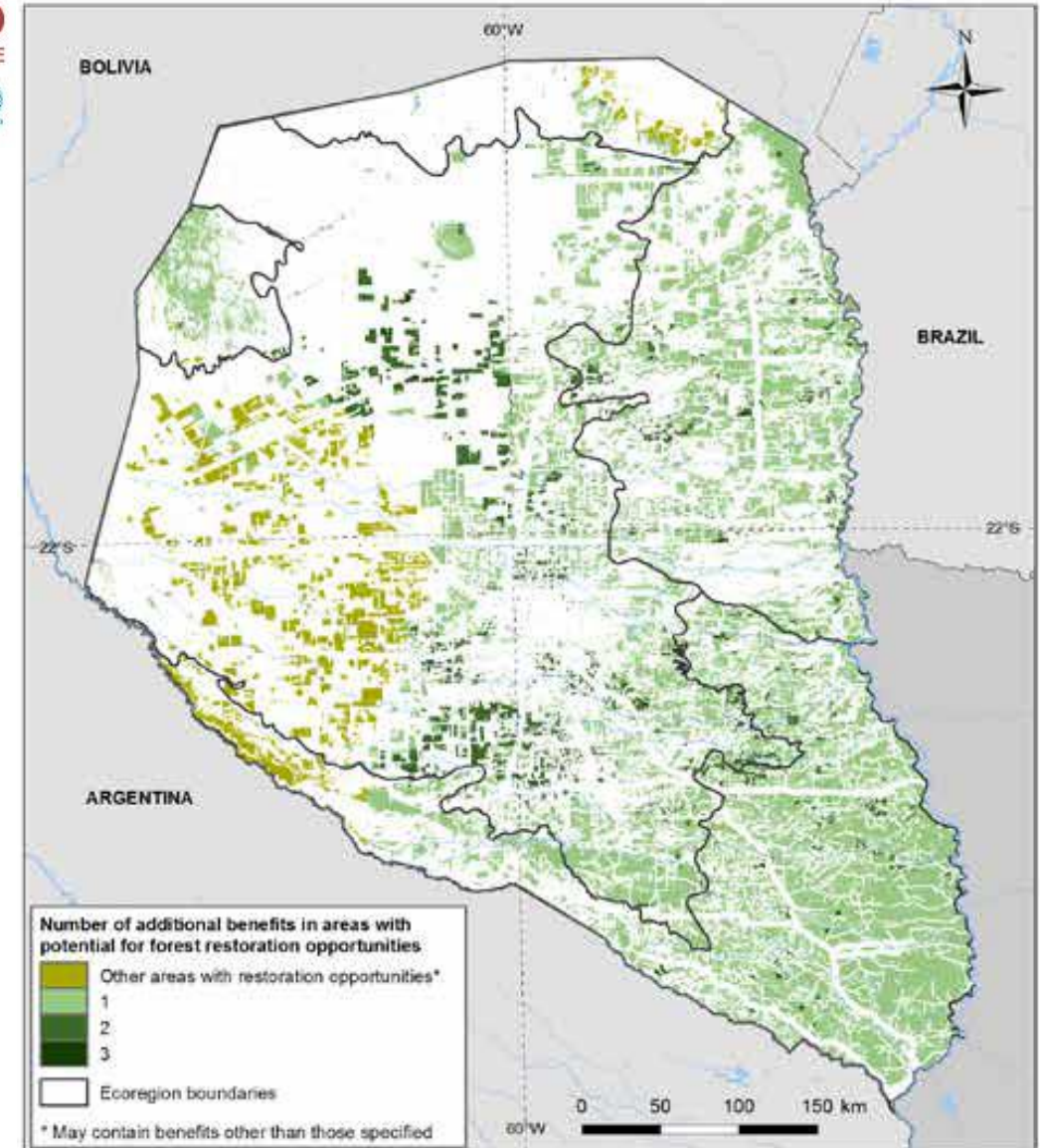


APPROACH	Impacts on:						Cost	Ease of measuring carbon benefits
	Carbon	Biodiversity	Soil	Water	NTFPs	Livelihoods		
Maintaining natural forest (prevention of conversion)	Large Green Circle	Large Green Circle	Large Green Circle	Large Green Circle	Large Green Circle	Large Red Circle	\$	Large Blue Circle
Promoting use of <b>non-timber forest products (NTFPs) at sustainable harvesting levels</b>	Small Grey Square	Small Red Circle	Small Grey Square	Small Grey Square	Small Grey Square	Medium Light Green Circle	\$	Small Blue Circle
Change from conventional logging to <b>Reduced Impact Logging (RIL)</b>	Small Green Circle	Small Green Circle	Large Green Circle	Large Green Circle	Small Light Green Circle	Small Light Green Circle	\$	Small Blue Circle
<b>Enrichment planting</b> in logged over forest	Large Green Circle	Small Green Circle	Small Light Green Circle	Small Light Green Circle	Medium Light Green Circle	Medium Light Green Circle	\$\$	Large Blue Circle
<b>Rehabilitation</b> of degraded land through <b>(assisted) natural regeneration</b>	Very Large Green Circle	Large Green Circle	Very Large Green Circle	Very Large Green Circle	Very Large Green Circle	Medium Light Green Circle	\$	Very Large Blue Circle
<b>Rehabilitation</b> of degraded land through <b>enrichment planting</b>	Very Large Green Circle	Large Green Circle	Large Green Circle	Large Green Circle	Very Large Green Circle	Medium Light Green Circle	\$\$	Very Large Blue Circle
<b>Monoculture</b> plantation of non-native species <b>(on non-forest land)</b>	Medium Light Green Circle	Small Light Green Circle	Small Light Green Circle	Small Light Green Circle	Small Grey Square	Very Large Light Green Circle	\$\$\$	Very Large Blue Circle
Plantation of <b>mixed native species (on non-forest land)</b>	Medium Light Green Circle	Small Green Circle	Small Green Circle	Small Green Circle	Small Light Green Circle	Medium Light Green Circle	\$\$\$	Very Large Blue Circle
<b>Conversion of open land to agroforestry</b>	Medium Light Green Circle	Large Green Circle	Small Green Circle	Small Green Circle	Large Green Circle	Small Light Green Circle	\$\$	Very Large Blue Circle
<b>Fire control</b> through raised awareness and increased enforcement in areas at risk	Small Green Circle	Small Green Circle	Small Green Circle	Small Green Circle	Small Green Circle	Small Light Green Circle	\$	Large Blue Circle

# Paraguay (Chaco) Biodiversity benefits in areas with potential forest restoration opportunities

- Endemic species
- Habitat diversity
- Fragile ecosystems
- Biodiversity corridors (connectivity)

Darker shading indicates areas potentially important for a higher number of these benefits.



# Analysis for Emissions Gap Report

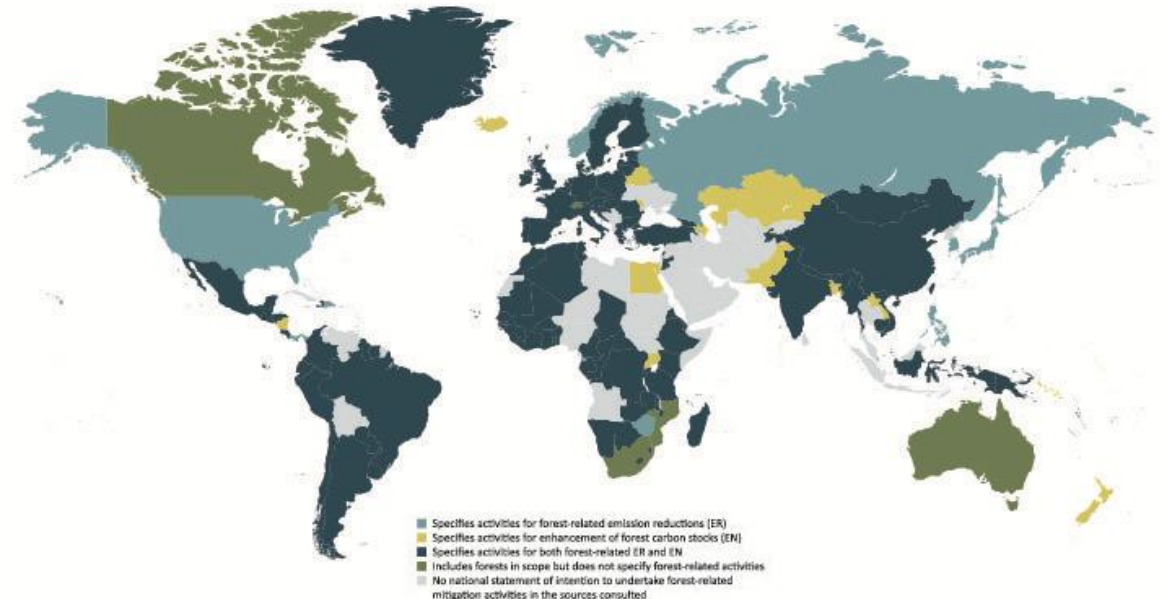
## National statements on forest-related mitigation:

- Intended Nationally Determined Contributions (INDCs)
- Nationally Appropriate Mitigation Actions (NAMAs)
- Bilateral arrangements for REDD+
- Carbon Fund proposals
- Bonn Challenge and Initiative 20x20 commitments on forest landscape restoration (IUCN, no date)
- The New York Declaration on Forests (national signatories)

All in all **83** non-Annex I countries have said that they are aiming to enhance forest carbon stocks



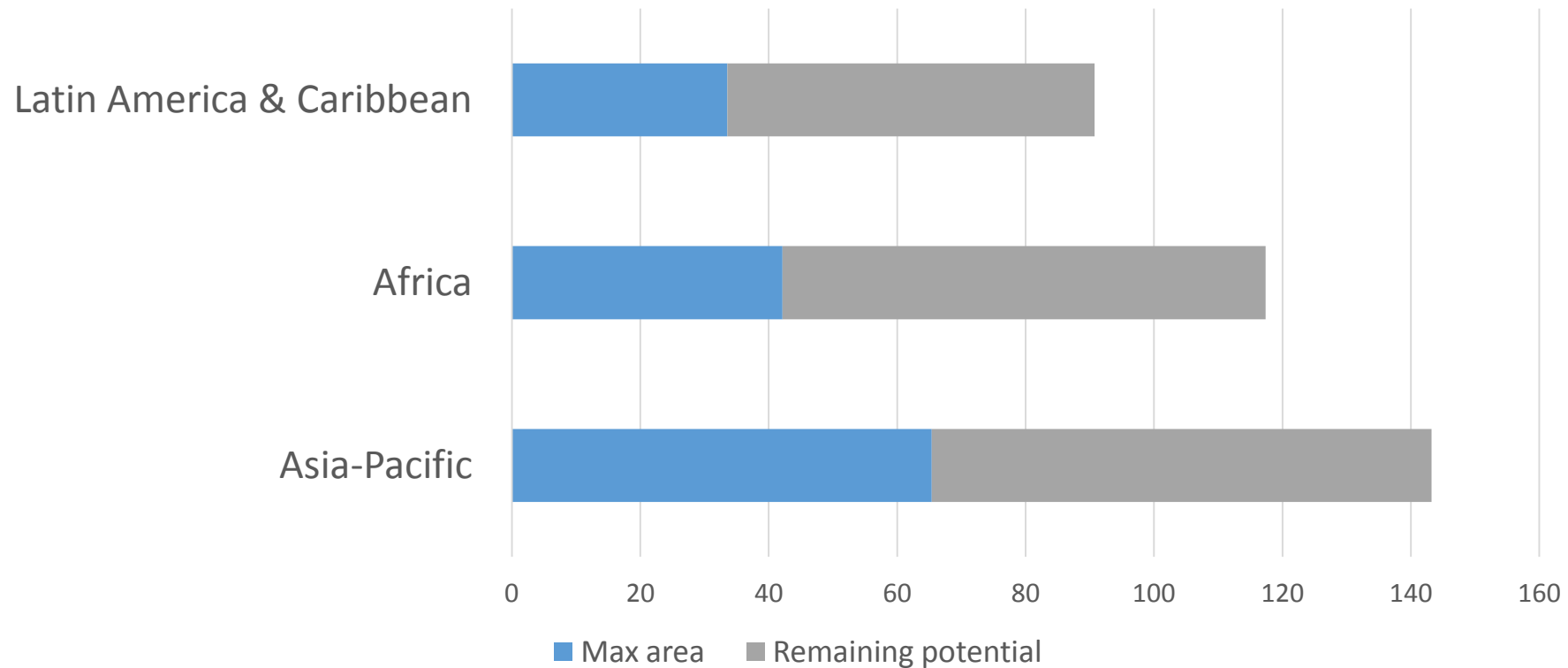
National statements of intention to undertake forest-related mitigation activities





# National statements on restoration area compared to wide-scale restoration potential

Area (Mha) – stated by 36 of 83 non-Annex I countries with a goal for enhancement of forest carbon stocks







9. Measure everything of significance.

I swear this is true.

Anything that is measured and  
watched, improves.

- Bob Parsons' Rules for Success in Business and  
Life in General



# Monitoring biodiversity and ecosystem services

- What aspects of biodiversity and ecosystem services to prioritize?
- Sometimes trade-offs against other monitoring objectives
- Appropriate indicators not always intuitive – research needed
- Remote sensing possibilities will improve in the near future



# Work areas that are in need of more attention

- Include climate envelope models in analyses to consider potential range shifts of tree species and forest types
- Estimating potential of restored forests to deliver services that are not currently in that piece of forest
- How connectivity relates to climate resilience



Thank you!