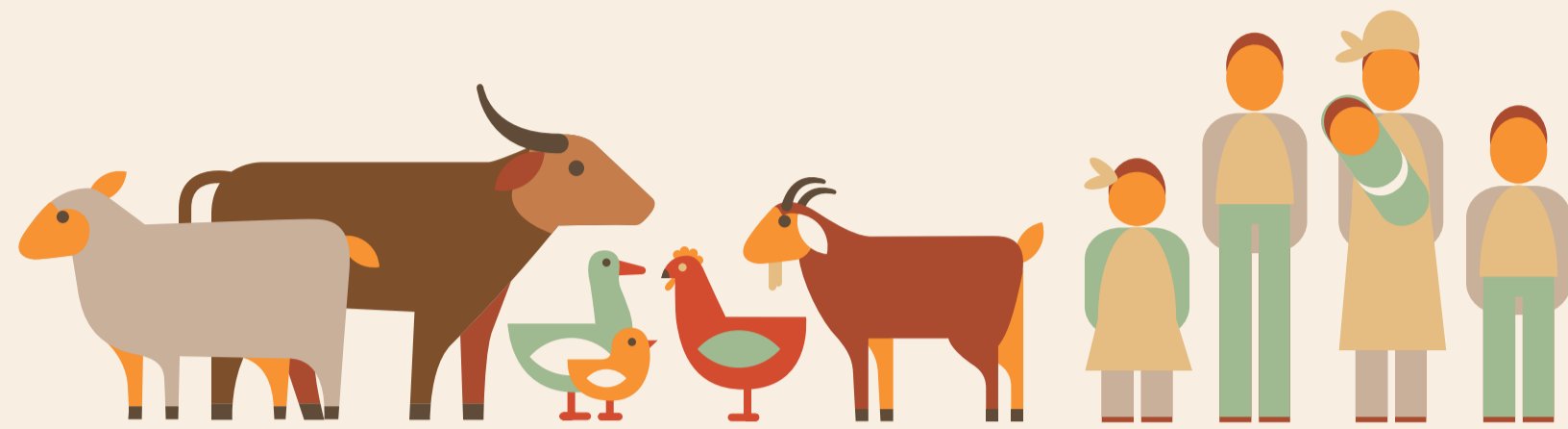
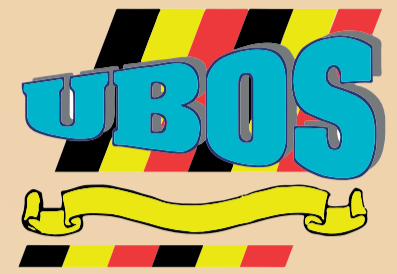


REALIZING 'UGANDA VISION 2040' THROUGH LIVESTOCK

EVIDENCE FROM THE 2011/12 NATIONAL PANEL SURVEY

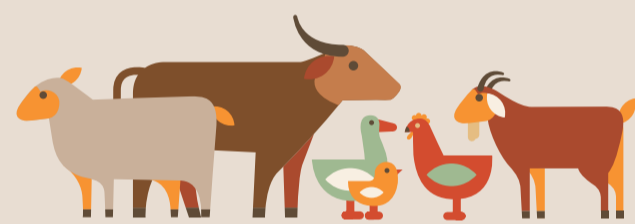


**POLICIES AND INVESTMENTS IN LIVESTOCK ARE ESSENTIAL FOR
"A TRANSFORMED UGANDAN SOCIETY FROM A PEASANT TO
A MODERN AND PROSPEROUS COUNTRY WITHIN 30 YEARS"**

"Specific emphasis will be put on promotion of ... livestock farming" Source: <http://npa.ug/uganda-vision-2040/>

THE MAJORITY OF HOUSEHOLDS DEPEND ON LIVESTOCK FOR THEIR LIVELIHOODS

Nationwide, **52%** of households keep livestock (19 million people)



Animal products contribute **17%** to their income:
18% in rural areas **12%** in urban areas

LIVESTOCK FARMERS ARE MOSTLY RURAL MANY ARE POOR

91% of livestock farmers live in rural areas, i.e. about **2.9** million families or 17.3 million people

35% of rural livestock-keeping households are poor **22%** of rural non-livestock-keeping households are poor

RURAL LIVESTOCK FARMERS HAVE FEW ANIMALS

The 'typical' herd:

2 indigenous cattle
7 indigenous chicken
3 indigenous goats

RURAL LIVESTOCK FARMERS USE BASIC HUSBANDRY PRACTICES AND MAKE LITTLE USE OF EXTENSION SERVICES

8% adopt mating or breeding strategies

21% vaccinate their animals

26% treat their animals against internal parasites

23% use preventive measures against external parasites

68% adopt some feeding strategy

only 19% utilize EXTENSION SERVICES

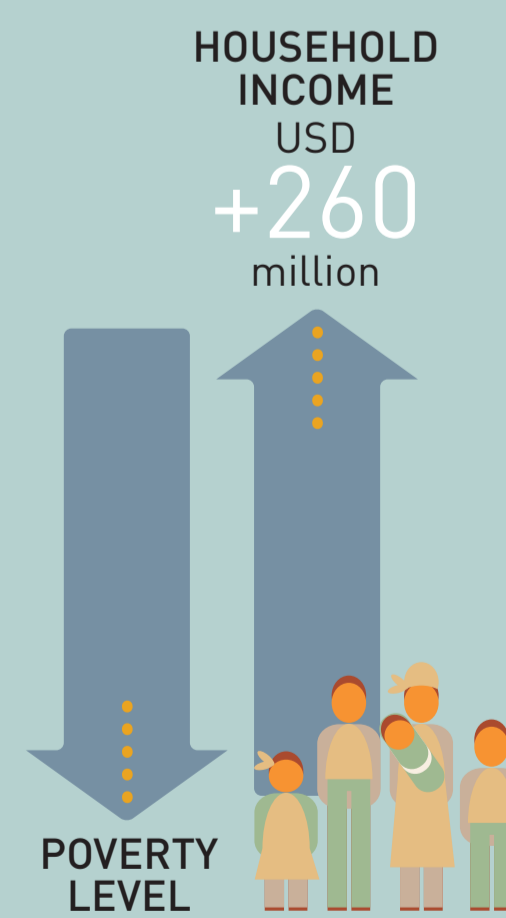
→ POLICIES AND INVESTMENTS THAT IMPROVE UTILIZATION OF LIVESTOCK EXTENSION SERVICES ENHANCE HOUSEHOLD LIVELIHOODS...

	Rural livestock farmers that UTILIZE livestock extension services	Rural livestock farmers that DO NOT UTILIZE livestock extension services
Net annual income per live animal	21 USD	12 USD
Net annual income per herd	453 USD	140 USD
Poverty rate	27%	37%

→ ...AND CONTRIBUTE TO UGANDA VISION 2040 ... TO "A TRANSFORMED AND PROSPEROUS COUNTRY"

If all livestock farmers utilized extension services*:

- the total aggregate household income would increase by over USD 260 million per year, with a corresponding reduction in poverty levels;
- the value of livestock value added would increase by almost 70 percent



* Estimates based on linear extrapolations assuming a net annual income per live animal of USD 21 for all livestock farmers – 2011 prices

In collaboration with:



Food and Agriculture Organization of the United Nations



Contacts:
ps@agriculture.go.ug
ubos@ubos.org