



FOOD CHAIN CRISIS Management Framework

Through the **Food Chain Crisis Management Framework (FCC)**, the Food and Agriculture Organization of the United Nations (FAO) addresses threats to the human food chain in an integrated and interdisciplinary manner. Transboundary animal and plant pests and diseases, and incidents affecting food safety, including emergencies that could result in radionuclides being dispersed in the environment, are major threats to the food chain. They significantly affect food security, livelihoods, human health, national economies and global markets.

The FCC approach combines the whole range of technical and operational expertise within FAO. It supports member countries in the global fight against threats to the human food chain. This approach integrates prevention, early warning, preparedness and response at all stages of the food chain, from production to consumption.

The FCC operates through three interrelated units:

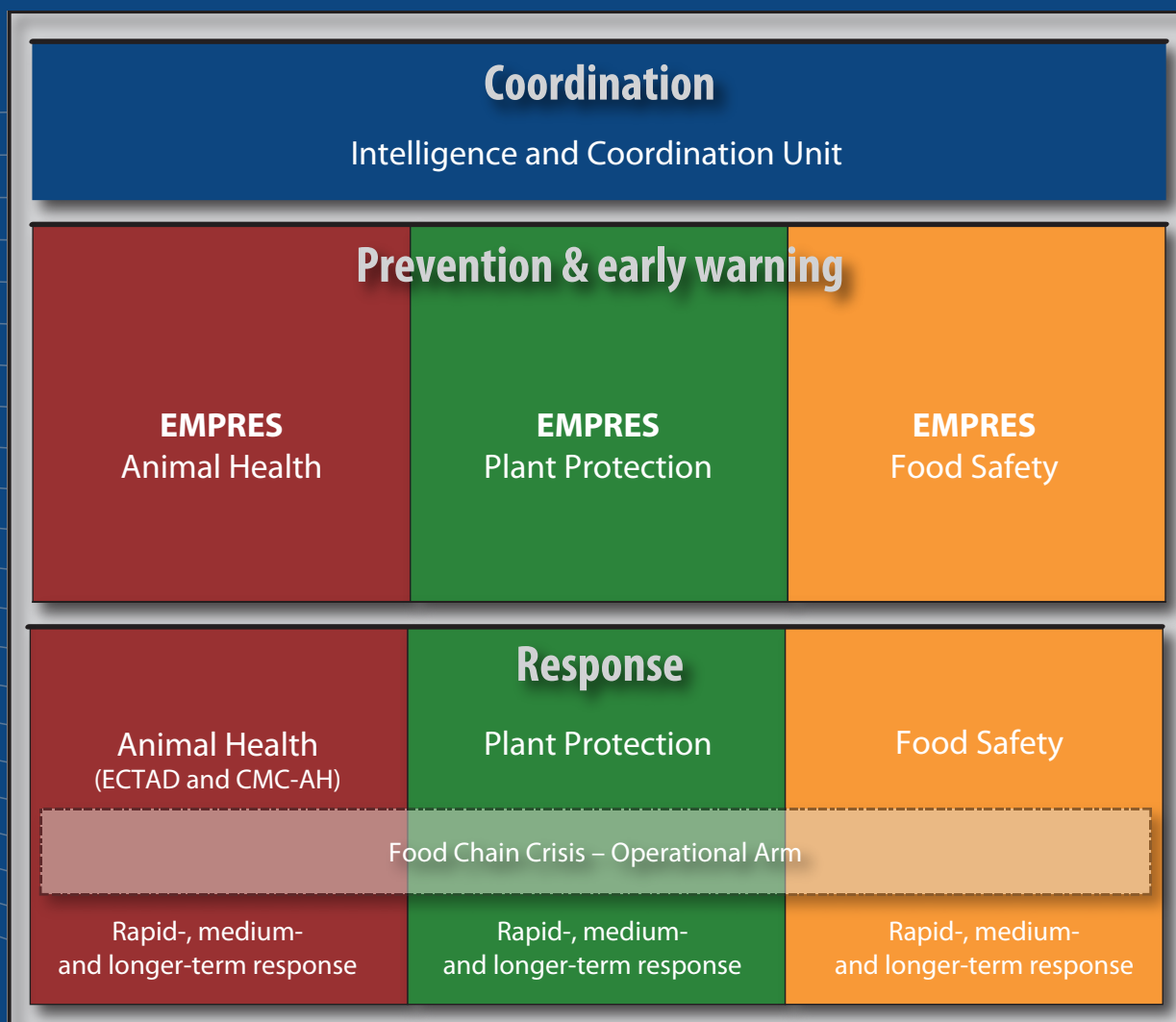
The ***Intelligence and Coordination Unit*** ensures overall coordination within the FCC and provides long-term risk analysis, risk communication and advocacy.

The ***Emergency Prevention Systems (EMPRES)*** work on prevention, early warning and early reaction across the entire food chain, through three thematic systems: EMPRES Animal Health, EMPRES Plant Protection and EMPRES Food Safety.

The ***Emergency Response Unit*** ensures an adequate rapid-, medium- and longer-term response to threats to the food chain.



FOOD CHAIN CRISIS Management Framework



Acronyms:

EMPRES: Emergency Prevention Systems

ECTAD: Emergency Centre for Transboundary Animal Diseases

CMC-AH: Crisis Management Centre - Animal Health