

Price Monitoring and Analysis Country Brief

Haiti

June-August 2010

Key Messages

- Markets are well supplied and prices of most staples are back to pre-earthquake levels.
- The country is recovering from the January earthquake, however people still face a precarious situation which could deteriorate as the hurricane season approaches.
- Different agencies are concerned over the food security situation of the country which is reported to be high and alarming over the long term.
- The government is supporting agriculture while aid agencies are assisting people in the process of recovery.

Background

The total population of Haiti was 9,780 million in 2008 with an annual growth rate of 1%. In 2005 the undernourished population reached 58%.

Economic Indicators	View Data
Total Population (millions) - 2008 (WB)	9.876
Population growth rate - 2008 (WB)	1%
GNI per capita, \$ PPP	n.a.
Population below 1\$ PPP per day - 2001 (MDGI)	54%
Rural population - 2008 (WB)	53%
Agriculture, value added (% of GDP) - 2003 (WB)	27%

Food Consumption	
Undernourished Population - 2005/2007 (FAO)	57%
Cereal share in total dietary energy consumption - 2007 (FAO)	46%
Meat share in total dietary energy consumption - 2007 (FAO)	4%

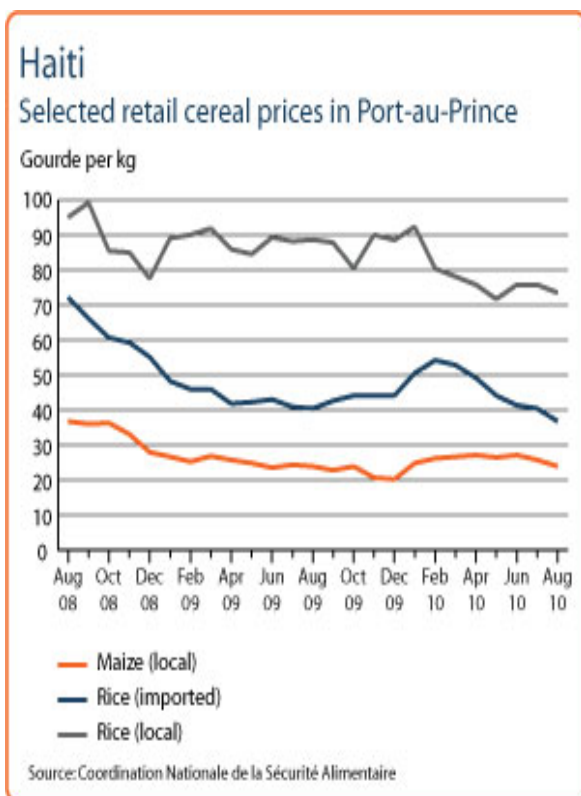
Health Indicators	
Pop. with sustainable access to improved sanitation - 2008 (WHO)	17%
Life expectancy at birth (years) both sexes - 2008 (WHO)	62
Pop. with access to improved drinking water sources - 2008 (WHO)	63%
Prevalence of HIV among adults aged >= 15 years - 2007 (WHO)	2%

Prices

In Port-au-Prince imported rice prices continued to decline since May 2010 (44.1 Gourde/Kg) and in August reached a low of 36.76 Gourde/Kg which is some 25% lower than their levels in February 2010. Also in Jacmel markets imported rice prices have decreased to 41.15 Gourde/kg in August compared to 44 in June/July and 55 in May. Also local rice prices in Jacmel have come down from June (101.6) and were quoted 97.85 Gourde/Kg in August. In Port-au-Prince, local rice prices have risen since May (71.66) to 75.79 in June/July and 82.69 in August. Local maize prices in Port-au-Prince were at 22.79, showing a decrease from June prices (27.1 Gourde/Kg).

Natural Disasters, Drought and Conflicts

Haiti is still recovering from the huge damages caused by the earthquake in Jan 2010. Food security is improving thanks to good production from the spring season and to decreasing prices of imported rice. However the upcoming hurricane season is expected to be very active. Tropical storms, hurricanes and cyclones would seriously impact on Haiti's recovery. The most vulnerable areas are the Port-au-Prince metropolitan area where some 1.6 million people still live in camps; other areas are the southern peninsula and the West and Artibonite departments. Storms would disrupt the spring harvest, damage crops and the already precarious houses and infrastructure, reduce access to markets and again have negative impacts on prices. Moreover there are major concerns over the possibility of social unrest during the organization of presidential and legislative elections which are set to take place on the 28th of November.



Source: GIEWS Country Briefs

Refugees and IDPs	2007	2008	2009
Total in the country	2	3	23
Total outside the country	32539	35737	36015

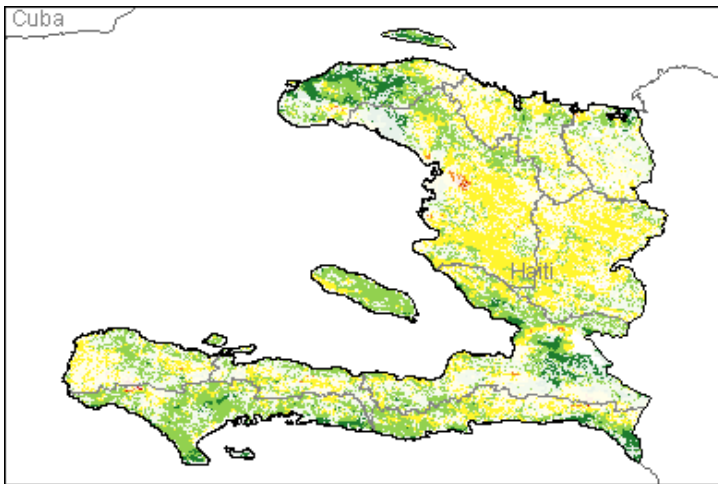
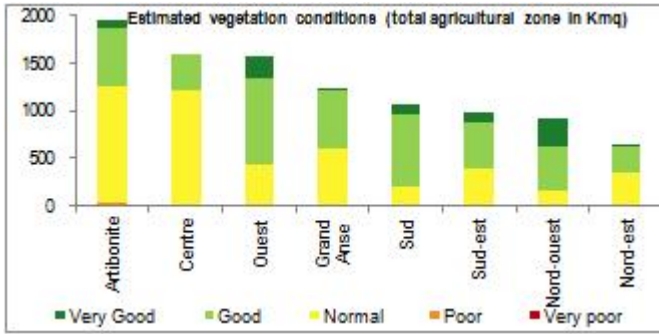
Source: UNHCR Statistical Online Population Database, United Nations High Commissioner for Refugees (UNHCR), Data extracted on 22/09/2010.

Disaster Type (last year)	Date	Location	Alert
Earthquake	2010-09-21	Ouest	1/3
Earthquake	2010-07-17	Artibonite	1/3
Flood	2010-02-28	Les Cayes	1/3

Source: Global Disaster Alert and Coordination System - 3 = 1000 or more people killed or 800000 or more people displaced. 2 = 100 or more people killed or 80000 or more displaced.

Vegetation Condition

At the middle of the rainy season, normal to good vegetation conditions are observed throughout the country. The general indicator of vegetation condition provided below is the relative difference between the NDVI for August 2010 and the average of the last 10 years, calculated on the agricultural zones derived from the GLOBCOVER land cover database (2005).



Source: JRC MARS – FoodSec

Food Security Situation Assessment

In the short term GIEWS reports severe localized food insecurity while FEWSNET estimates moderate food insecurity in the north western areas, eastern inlands and the southern peninsula. In the long term WFP highlights a situation of very high hunger and IFPRI warns of an alarming hunger problem.

CURRENT EMERGENCY ASSESMENT

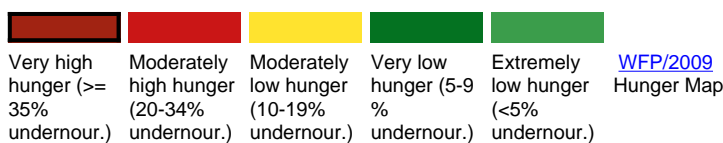


FAO/GIEWS CPFS 2010

The number of food insecure people continues to decline due largely to the good performance of the spring harvest. Food availability has markedly improved and food prices are stabilizing in most markets. The impleme...[more](#)

FEWSNET

SCALE OF HUNGER



WFP/2009 Hunger Map



IFPRI/2009 GHI

Food Balance Sheet

Good harvesting of rice and maize is expected in 2010; but slightly lower than last year's bumper crop. The 2010 output is forecast at 502,000 tonnes representing a 9% decrease from the 2009 production of 553,000 tonnes.

Haiti				
Cereal production				
	2005-2009 average	2009	2010 forecast	change 2010/2009
	000 tonnes			percent
Maize	238	304	258	-15
Rice (paddy)	117	128	132	3
Sorghum	108	121	112	-7
Total	463	553	502	-9

Note: percentage change calculated from unrounded data.
Source: FAO/GIEWS Country Cereal Balance Sheets

Source: GIEWS Country Briefs

Government Policies

The Gvmt with the help of international agencies has provided farm inputs such as fertilizers, improved seed varieties, credit and tools to most farmers. The aim of the agricultural cluster is to support local food production and generate job opportunities. UN agencies have supported gvm't's efforts with cash for work programmes and food for work programmes, and both are expanding their coverage.

Consumer and market oriented measures	n.a.
Producer oriented measures	Support to inputs for crop production.
Trade policy measures	n.a.
Safety net (increased or introduced)	Cash/food for work.

Different sources

Current events to watch (Click to see the full report)

No News Found

For more information, contact: Information-for-action@fao.org
Website: www.foodsec.org

Powered By the [GIEWS Workstation](#)