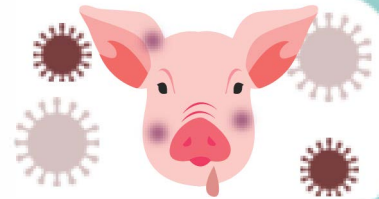


What is **African swine fever (ASF)** and how to avoid it?

What is **ASF**?

It is a disease of pigs caused by the ASF virus.
It is highly contagious and deadly to pigs.

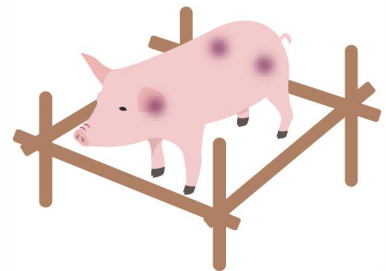


Can people be infected with **ASF**?

ASF is not infectious to people however,
people can spread the disease to pigs on their clothes
and equipment.

What are the clinical signs of **ASF**?

- Bruises or blue pigmentation on snout, feet and ears
 - Discharge from eyes and snout
 - High fever
- Diarrhea
 - Difficulty breathing
 - Vomiting blood
 - Loss of appetite



Is there a vaccine or cure for **ASF**?

There is no known cure or
vaccine developed yet for ASF.

What should we do to avoid **ASF**?

Don't feed swill to pigs

Swill feeding can infect pigs with ASF and
cause an outbreak in your area.

