

Price Monitoring and Analysis Country Brief

Central African Republic

September 2011 - February 2012

Key Messages

- **Market activities are hampered by conflict and civil insecurity, resulting in very limited access to food.**
- **Food security conditions are dramatically affected by the continuing conflict that limits the humanitarian agencies to access conflict-affected population. Agencies agree on a very high and alarming hunger situation.**
- **Massive displacement continues, as clashes intensify, particularly in the Northern and Eastern areas of the country. The IDPs population is estimated to be around 105,206.**
- **FAO has been providing support to agricultural activities; however access to land and inputs is very much constrained.**

Background

The country's total population is about 4,4 million with an annual growth rate of 1%; 62% of the population is estimated to be below the poverty line of \$1 PPP per day; and 40% of the population is reported as undernourished.

Economic Indicators	View Data
Total Population (millions) - 2010 (WB)	4.401
Population growth rate - 2010 (WB)	1%
GNI per capita, \$ PPP - 2010 (WB)	780
Population below 1\$ PPP per day - 2003 (MDGI)	62%
Rural population - 2010 (WB)	61%
Agriculture, value added (% of GDP) - 2009 (WB)	55%

Food Consumption	
Undernourished Population - 2006/2008(FAO)	40%
Cereal share in total dietary energy consumption - 2007 (FAO)	25%
Meat share in total dietary energy consumption - 2007 (FAO)	8%

Health Indicators	
Pop. with sustainable access to improved sanitation - 2008 (WHO)	34%
Life expectancy at birth (years) both sexes - 2009 (WHO)	48
Pop. with access to improved drinking water sources - 2008 (WHO)	67%
Prevalence of HIV among adults aged >= 15 years - 2009 (WHO)	4.7%

Prices

There is no price data available.

Food Security Situation Assessment

Civil conflict and insecurity in the north-east of the country remains a major factor impeding improvements in food insecurity conditions and agricultural production. Furthermore, insecurity in neighboring Democratic Republic of Congo (DRC), has led to an increase in the number of refugees in CAR, putting additional pressure on already limited resources. Moreover, the deterioration of the security situation in the country has dramatically constrained humanitarian access to assist people affected by clashes. GIEWS reports severe localized food insecurity as civil insecurity restricts access to agricultural land and food. FAO hunger map describes very high prevalence of undernutrition while IFPRI depicts an alarming situation of hunger.

CURRENT EMERGENCY ASSESSMENT



Exceptional shortfall in aggregate food production supplies | Widespread lack of access | Severe localized food insecurity | [FAO/GIEWS CPFS 2011](#)

Central African Republic is not covered by FEWSNET. FEWSNET coverage is limited 14 African countries 1 Caribbean (Haiti) and 1 Central Asia (Afghanistan). Food security status is given for different parts of the country in each case. [FEWSNET](#)

SCALE OF HUNGER (% of Undernourishment)



Very high (>= 35%) | High (25-34%) | Moderately high (15-24%) | Moderately low (5-14%) | Very low (< 5% under.) | [FAO Hunger Map](#)

FAO Hunger Map classifies all countries of the world into five based on % of population undernourished.

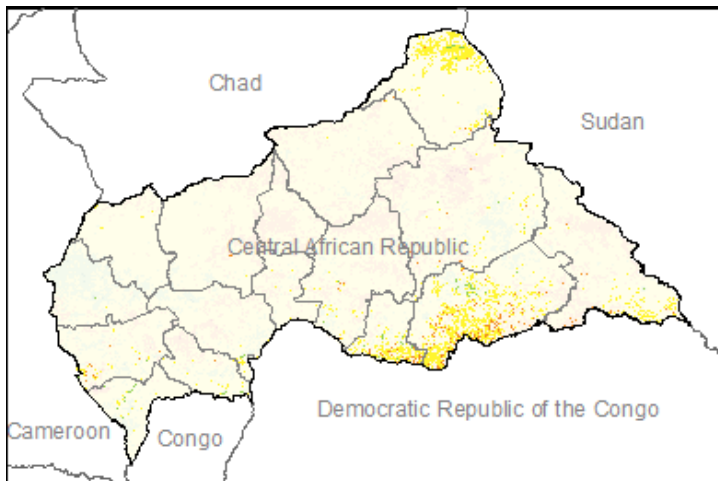
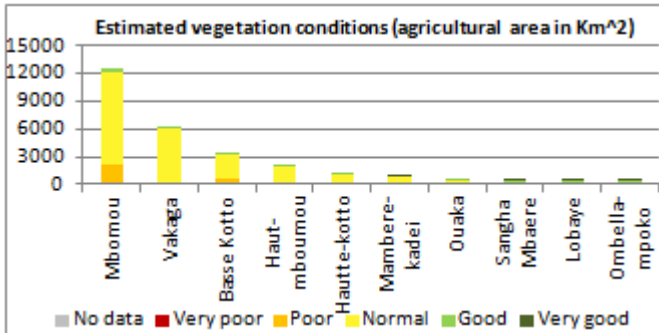


Extremely alarming | Alarming | Serious | Moderate | Low | [IFPRI/2011 GHI](#)

Central African Republic

Vegetation Condition

According to the reference cropping calendars, at the moment this area is out of cropping season. Normal conditions are observed throughout the country. The general indicator of vegetation condition provided below is the absolute difference between the NDVI for February 2012 and the average of the last 10 years, calculated on the agricultural zones derived from the GLOBCOVER 2005 database (ESA).



Source: JRC MARS – FoodSec

Crop phase in the reference period

Sowing	Yams
Growing	Cassava - Maize (South/Second) - Rice
Harvesting	Cassava - Millet - Maize (South/Second) - Rice - Sorghum - Yams

Natural Disasters, Drought and Conflicts

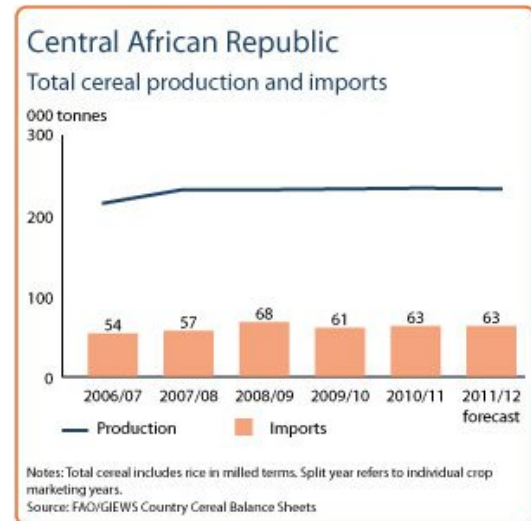
Rebel groups continue to perpetuate attacks and clashing which cause massive displacement. The most affected populations are in the North and East. According to UNHCR and OCHA, the number of IDPs is 105,206 people, and returnees are 66,545. A total of 19,865 refugees are reported in the country while refugees from CAR in other countries account to 164,905.

Refugees and IDPs	2008	2009	2010
Total in the country	205901	225319	215371
Total outside the country	323357	357477	358990

Source: UNHCR Statistical Online Population Database, United Nations High Commissioner for Refugees (UNHCR), Data extracted on 01/03/2012.

Food Balance Sheet

Preliminary estimates for 2011 harvest point to a level of production that is similar to the previous year. Similarly imports for 2011/12 marketing year are at the same level, 63,000 tonnes, of the previous year imports and slightly above average.



Notes: Total cereal includes rice in milled terms. Split year refers to individual crop marketing years.
Source: FAO/GIEWS Country Cereal Balance Sheets

Source: GIEWS Country Briefs

Government Policies

FAO has been providing agricultural tools, seeds and training to farmers, as well as assistance in the management of lowlands. Nevertheless, agricultural production is still constrained by limited access to agricultural inputs and insecurity throughout the country.

Consumer and market oriented measures	n.a.
Producer oriented measures	n.a.
Trade policy measures	n.a.
Safety net (increased or introduced)	FAO input distribution

Different sources

Current events to watch (Click to see the full report)

No News Found

For more information, contact: Information-for-action@fao.org
Website: www.foodsec.org

Powered By the [GIEWS Workstation](#)

The Programme on Linking Information and Decision Making to Improve Food Security is funded by the European Union and implemented by the Food and Agriculture Organization of the United Nations.