

A NOTE ON FISHERIES ADMINISTRATION IN INDONESIA

by

M. Ahjar

Chief, Provincial Inland Fisheries Service of West Java, Bandung, Indonesia

ABSTRACT

The functions of fisheries administration in Indonesia are described. There are two fisheries agencies in Indonesia: the Inland Fisheries Service coordinated by a Fisheries Directorate. The Indonesian fisheries administration set-up is illustrated.

1. THE FUNCTIONS OF FISHERIES ADMINISTRATION

For a country like Indonesia with its dense population it is of great importance to pay special attention to the question of how to feed the 88 million people. If until now it can be said that the Indonesian people are able to feed themselves well, then it is not according to correct nutrition. Investigations have shown, that there are still great shortages of the necessary elements. In this connection has to be mentioned the great lack of animal protein. The average amount of animal protein consumed in Indonesia is about 4 grams/person/day. This amount is surely too low (compare: Japan 20 grams/person/day).

One of the animal protein resources is fish, besides meat, egg, milk etc. Fish production in Indonesia has not yet reached its maximum. At present it is about 700,000 ton, but it can surely be increased to 2-3 times more. The Indonesian seas and inland waters are full of possibilities, which might lead to self-support as far as fish demand is concerned. To realize this it is very necessary that there is a well settled fisheries administration. The task of fishery administration will include the next items:

1. Inventory of all fish resources and all possibilities of creating new resources or finding new fishing grounds.
2. Setting up a program of increasing fish production.
3. Training fishery experts to carry out all programs.
4. Animating the people's interest in fishery matters.
5. Cooperating with fishery societies.
6. Organizing fish marketing and international fisheries.

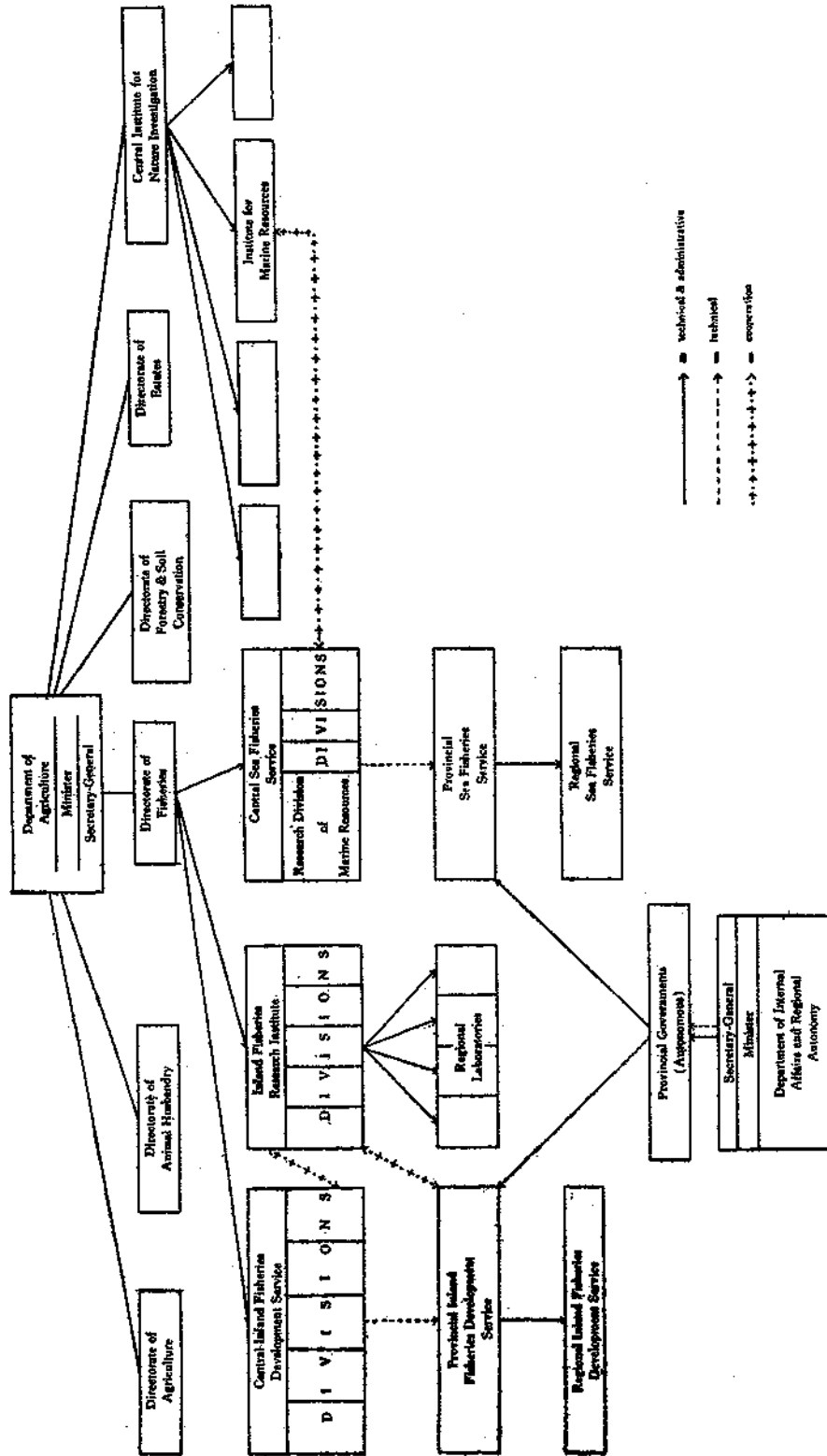
Above-mentioned tasks consist of several subordinated tasks which will be found in the working program of the concerned fishery administration (Inland Fishery Administration and Marine Fishery Administration).

2. FITTING THE FISHERY AGENCY INTO THE GOVERNMENTAL STRUCTURE

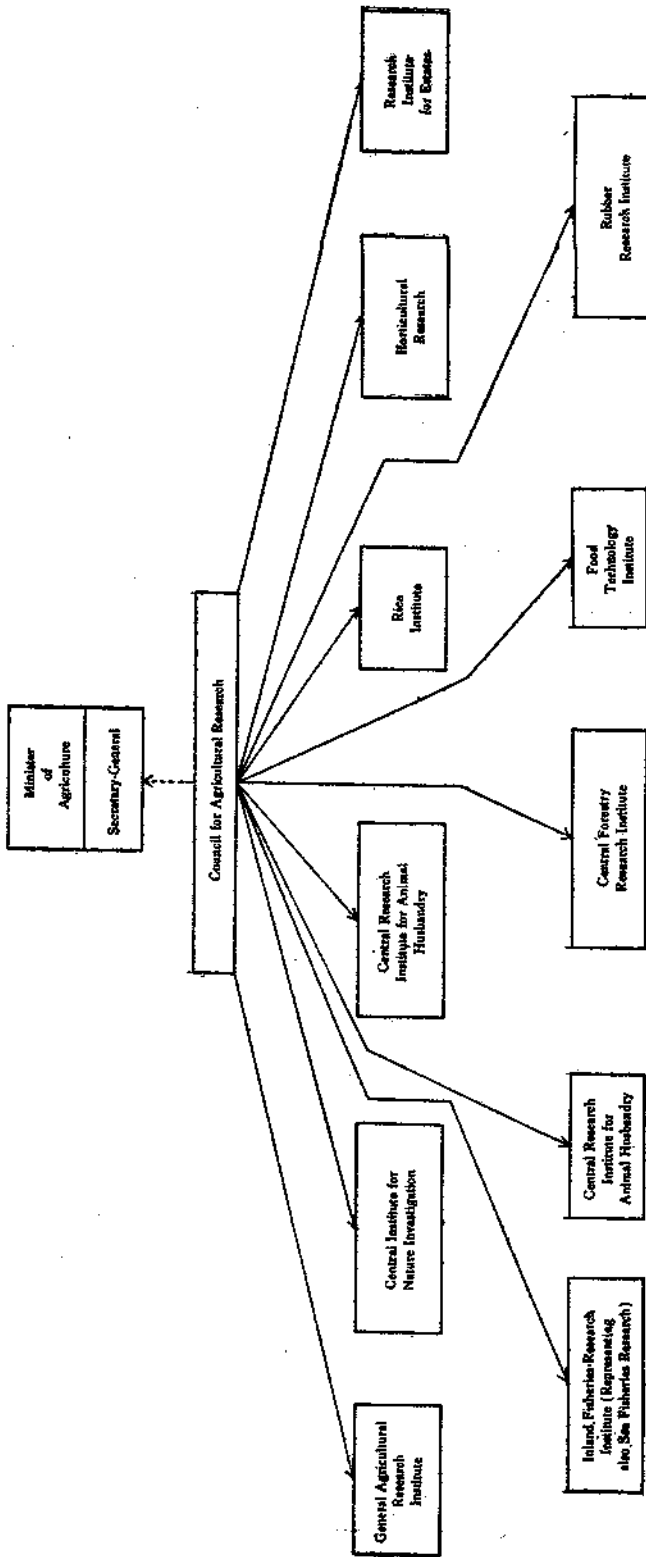
The Indonesian Constitution says that land and water are under Governmental control and will be occupied for the people's benefit. This aim has been realized in the Governmental structure by setting up special Fisheries Agencies in the Department of Agriculture. This Department has 2 Fishery Agencies—the Inland Fisheries Service and the Marine Fisheries Service. A coordinating body is created for both, called: The Fisheries Directorate.

3. INLAND AND MARINE FISHERY ADMINISTRATION

By Departmental decree the Inland and Marine Fishery Administration is in general organized as follows:



—————> technical & administrative
 - - - - -> technical
 - - - - -> technical
 - - - - -> technical



---> see reference footnote
---> see coordination

The Council for Agricultural Research consists of the structure of above institutes.