

Geospatial assessments were conducted in support to assess land availability, accessibility and use by the internally displaced persons (IDPs), returnees and host communities in Cabo Delgado and Nampula provinces in Mozambique to provide spatial-explicit information on the changes in agriculture, forest, biomass, and land degradation. A Google Earth Engine (GEE) [App](#) is being developed to facilitate dissemination of the results with dynamic visualization and to support informed decision making on allocating land with flexible multicriteria analysis (e.g., selection of IDPs sites, buffer distance, land covers, topography, etc.).

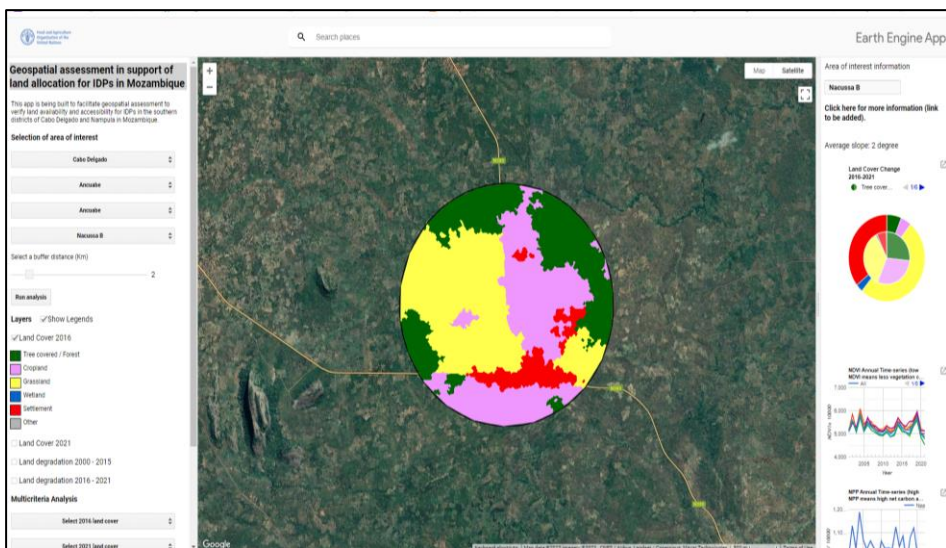


Figure 1: User interface of the Google Earth Engine App

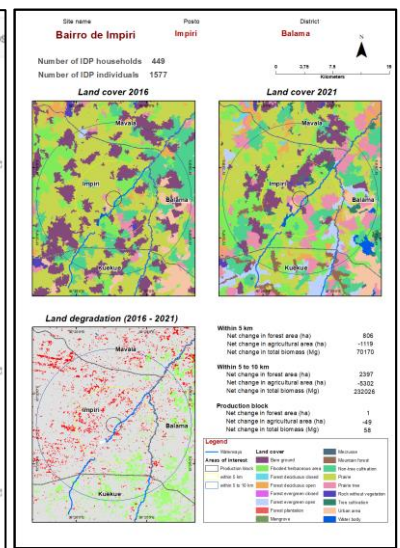


Figure 2: Example results for one IDPs site¹

Key Findings

- Forest area decreased was more within 5 km buffer compared to 5 to 10 km buffer from the resettlement sites.
- Agricultural land area decreased was more within 5 to 10 km buffer than within 5 km buffer.
- Land degradation was more concentrated within 5 km buffer compared to 5 to 10 km buffer.

¹ Locations of IDPs sites were retrieved from the International Organization for Migration (IOM), Nov 30 2022. DTM Mozambique — Multi-sectorial Location Assessment Dataset — Round 10. IOM, Mozambique.

Prepared by Rashed Jalal, Amit Ghosh, Brasilino Salvador, Jacqueline Were and Matieu Henry in support to an assessment aiming at verifying the land availability and accessibility for the Internally Displaced Persons (IDPs) in the provinces of Cabo Delgado and Nampula in Mozambique for better planning of agricultural livelihood interventions, including crop production activities in the production blocks allocated by the Government, in the land shared with host communities (SFER/GLO/401/MUL), Food and Agriculture Organization of United Nations (FAO), Rome, Italy.

The boundaries and names shown, and the designations used on these map(s) do not express any opinion whatsoever on the part of FAO concerning the legal status of any country, territory, city or area or of its authorities, or concerning the delimitation of its frontiers and boundaries. Dashed lines on maps represent approximate border lines for which there may not yet be full agreement.