



Commodity Price Bulletin
(December 2005)

Ministry of Agriculture, Animal Husbandry and Food
Food, Agriculture and Animal Husbandry Information
Management and Policy Unit (FAAHM)
Kabul, 8 January 2006

Abbreviations

| | |
|-------|--|
| DAP | Diammonium Phosphate |
| FAAHM | Food, Agriculture and Animal Husbandry Information Management Unit |
| FAO | Food and Agriculture Organization of the United Nations |
| FOB | Free On Board |
| MAAHF | Ministry of Agriculture, Animal Husbandry and Food |
| WFP | World Food Program |

Contact us

Comments on this bulletin are most welcome. Contact us at:

Haqiqatpal Ghulam Rabbani, Director, FAAHM, MAAHF

GhulamRabbani.haqiqatpal@af.fao.org

Mobile: +93-(0)70-284879



The FAO project “Support to FAAHM in the MAAHF” (GCP/AFG/034/GER) provided technical guidance and financial support for the publication of this bulletin. The project is funded by the Government of Germany.

Afghanistan Map with Provincial Boundaries



Source: Afghanistan Information Management Service (AIMS)

Contents

| | | |
|------|--|----|
| 1. | Consumer Price Index (CPI)..... | 1 |
| 2. | Prices of various agricultural commodities..... | 3 |
| 2.1. | <i>International market price of wheat</i> | 3 |
| 2.2. | <i>Wheat prices in local markets</i> | 5 |
| 2.3. | <i>Livestock and livestock products prices</i> | 7 |
| 2.4. | <i>Labor costs</i> | 10 |
| 2.5. | <i>Fertilizer prices</i> | 11 |

Annex I: National Consumer Price Index (CPI), December 2004 to November 2005 (Source: CSO)

Annex II: Kabul Consumer Price Index (CPI), January-December 2005 (Source: CSO)

Annex III: Weekly price of agricultural commodities/services, July-December 2005 (Source: WFP)

Annex IV: Monthly prices of agricultural commodities, January-December 2005 (Source: FAAHM)

Annex V: Monthly market prices of selected agricultural commodities, November 2005 (Source: FAAHM)

Annex VI: Monthly market prices of selected agricultural commodities, December 2005 (Source: FAAHM)

| Annex/Source | Commodity coverage | Frequency | Area coverage |
|--------------|---|-----------|--|
| 1. CSO | OVERALL INDEX Food Index <ul style="list-style-type: none"> • Bread and cereals • Meat • Milk, cheese and eggs • Oils and fats • Fresh and dried fruits • Vegetables including tubers • Sugar and sweets • Spices • Non-alcoholic beverages • Cigarettes and tobacco Non-food Index Exchange rate Index | Monthly | National |
| 2. CSO | OVERALL INDEX Food Index <ul style="list-style-type: none"> • Bread and cereals • Meat • Milk, cheese and eggs • Oils and fats • Fresh and dried fruits • Vegetables including tubers • Sugar and sweets • Spices • Non-alcoholic beverages • Cigarettes and tobacco Non-food Index Exchange rate Index | Monthly | 1. Kabul 2. Herat 3. Kandahar 4. Jalalabad 5. Mazar-e-Sharif 6. Khost |
| 3. WFP | 1. Wheat 2. Wheat flour 3. Bread 4. Diesel 5. One-year female sheep 6. Casual labor | Weekly | 1. Kabul 2. Herat 3. Kandahar 4. Jalalabad 5. Mazar-e-Sharif 6. Faizabad 7. Bamyan 8. Maimana |

| Annex/Source | Commodity coverage | Frequency | Area coverage |
|--------------|--|-----------------------------------|------------------------|
| 4. FAAHM | <ol style="list-style-type: none"> 1. Wheat, local 2. Wheat, imported 3. Wheat flour, best quality 4. Beef 5. Mutton / Lamb 6. Chicken 7. Rice Local 8. Rice, imported 9. Best Quality Wheat Seed 10. Improved wheat seed 11. Agriculture Labor 12. Oxen hire 13. Water pump service 14. Local Urea 15. Urea, imported 16. Best Quality DAP 17. Tractor Hiring Charge | Monthly (January-October 2005) | All provincial centers |
| 5&6. FAAHM | <ol style="list-style-type: none"> 1. Wheat, local 2. Wheat, imported 3. Wheat Flour, local 4. Wheat Flour, imported 5. Rice, local 6. Rice, imported 7. Maize 8. Mungbeans 9. Pea 10. Potato 11. Vegetable oil 12. Milk 13. Beef 14. Mutton 15. Chicken 16. Male Sheep 1 year 17. Female Sheep 1 year 18. Male Goat 1 year 19. Female Goat 1 year 20. Wheat seed, best quality 21. Local Urea 22. Imported Urea 23. DAP 24. Agriculture labor 25. Pair of oxen 26. Water pump 27. Tractor hiring 28. Diesel 29. Liquid Pressure Gas 30. Kerosene 31. Petrol 32. Raw Opium | Monthly (from November 2005) | All provincial centers |

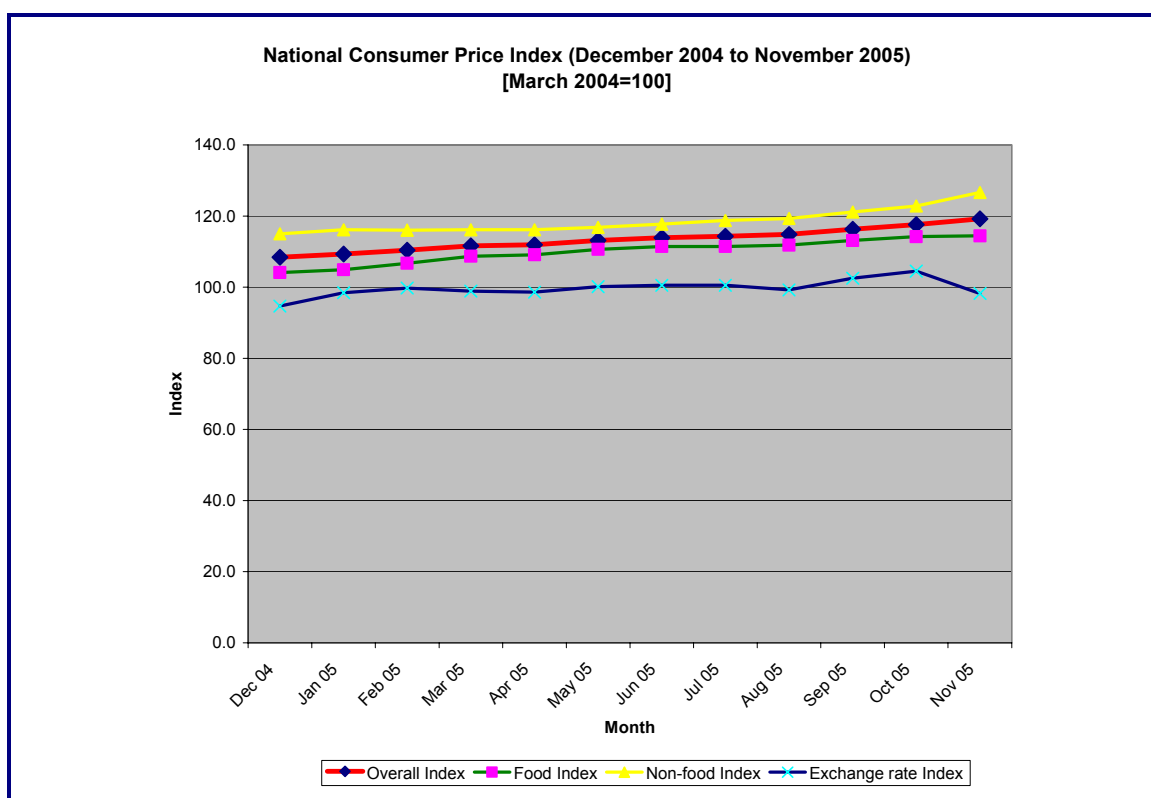
Ministry of Agriculture, Animal Husbandry and Food
Food, Agriculture and Animal Husbandry Information
Management and Policy Unit (FAAHM)

Commodity Price Bulletin
(December 2005)

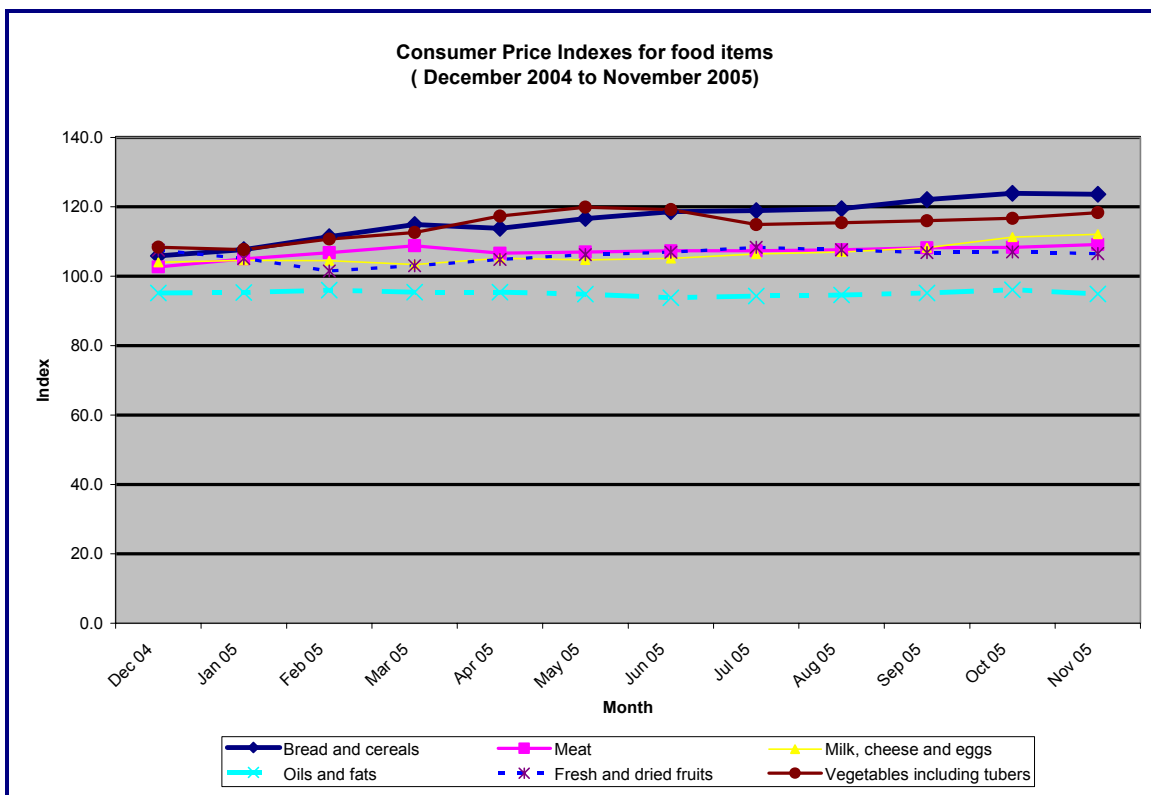
1. Consumer Price Index

Consumer Price Index (CPI) is an index of the prices of consumer goods and services purchased by the consumers. It is used to measure the rate of inflation or the cost of living. CPI for Afghanistan is a weighted average of the CPIs for Kabul, Herat, Kandahar, Jalalabad, Mazar-e-Sharif and Khost. The weights used in the index for food and non-food items are 60.6% and 39.4%, respectively. March 2004 is the base-period used.

National CPI in the last one-year period (December 2004 to November 2005) rose by about 11 percent points.¹ The annual increases in the national food and non-food indexes were 10.3 and 11.6 percent points, respectively. The exchange-rate Index rose only by 4 percent-points in the above one-year period, especially after its record 6.3 percent point drop in November. (Graph below and Annex I)

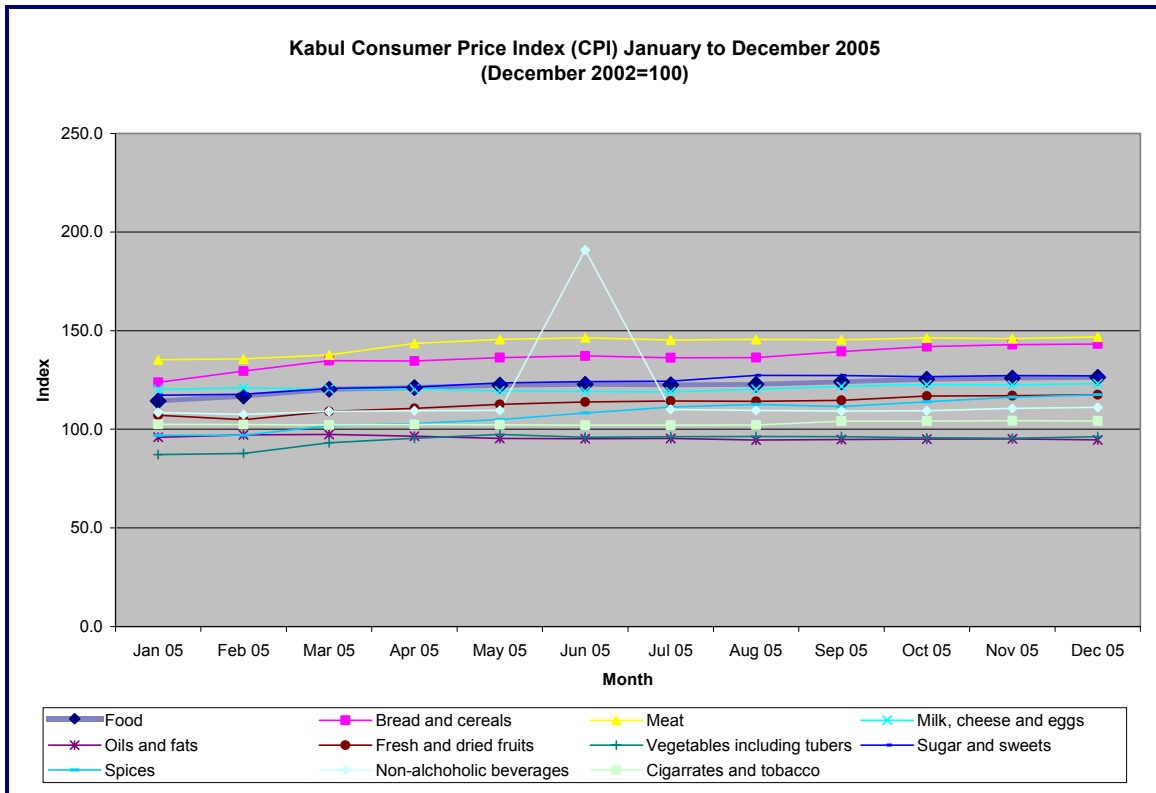


¹ Source: Central Statistics Office (CSO)



Bread and cereals consumption – which have a one-fourth share in the National CPI – showed the highest annual increase (index up by 18 percent points) among the food items. The annual price increases (up 10 percent-points up) were substantial also in the cases of sugar and sweets, as well as vegetables and tubers. The increase in the prices of meat, milk, cheese and eggs in the one-year period was 8 percent point. The index prices of fresh and dry fruits exhibited a slightly decreasing trend, whilst the prices of oil and fats showed no significant changes. (Graph above and Annex I)

Kabul CPI increased by 14.3 percent points in 2005. This increase was more influenced by increases in the consumer prices of non-food items than by the price increases in food items. The annual price increases in Kabul were substantial in the case of spices (index up by 21 percent-points). The increase in the prices of meat, milk, cheese and eggs in the one-year period was 12 percent point. The index prices of fresh and dry fruits as well as sugar and sweets increased by 10 percent points. The prices of oil and fats showed insignificant changes. (Graph below and Annex II)



2. Prices of various agricultural commodities

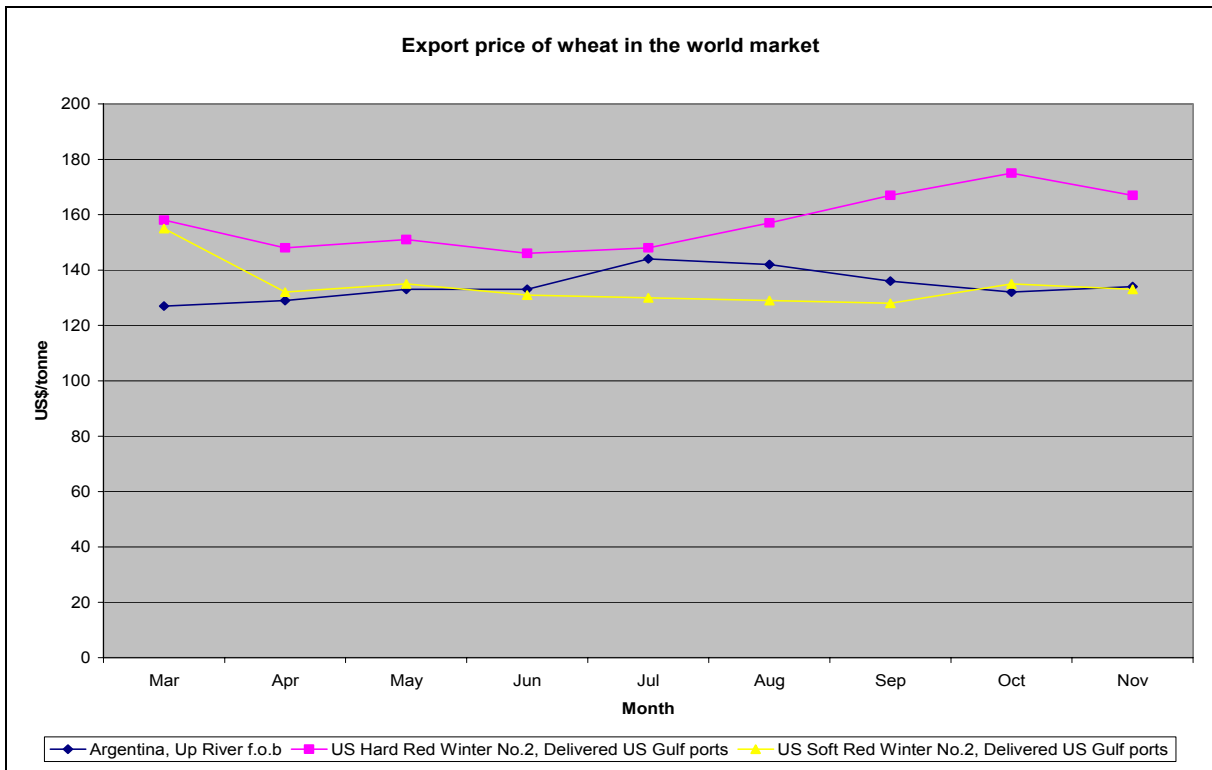
2.1. International market price of wheat

International export price of wheat in December 2005² ranged between US\$133-167 per tonne (6.7-8.4 Afs/kg). Summarized world wheat price in the past five years is presented in Table 1 and a graph below.

² Source: International Grain Council and FAO.

Table 1: Lowest, highest and average price of wheat in the world market (2001 to 2005)³

| | Price (US\$/tonne by type of wheat (fob; Persian Gulf/US Gulf)) | | |
|--------------|---|----------|----------|
| | Argentina | US2 Hard | US2 Soft |
| Low 2001 | 107 | 125 | 93 |
| High 2001 | 129 | 137 | 118 |
| Average 2001 | 119 | 130 | 107 |
| Low 2002 | 110 | 123 | 111 |
| High 2002 | 157 | 197 | 161 |
| Average 2002 | 132 | 151 | 130 |
| Low 2003 | 137 | 131 | 125 |
| High 2003 | 165 | 174 | 161 |
| Average 2003 | 151 | 150 | 138 |
| Low 2004 | 111 | 146 | 130 |
| High 2004 | 161 | 173 | 160 |
| Average 2004 | 139 | 161 | 145 |
| Low 2005 | 127 | 148 | 128 |
| High 2005 | 144 | 175 | 155 |
| Average 2005 | 134 | 157 | 134 |



³ Source: International Grain Council and FAO

This year's wheat price in international market is lower than the last two years. Since August 2005 the price of Argentina Trigopan Upriver wheat (FOB; Persian Gulf) showed a generally downward trend. The prices of US hard and US soft wheat (FOB; US Gulf) showed a steady increase in August to October 2005, but a downwardly trend in their prices was observed in November 2005.

By the first week of January 2006, the wheat prices increased and the prices of US Hard Red Winter (HRW) and Soft Red Winter⁴ were US\$166-176/tonne and US\$144/tonne respectively.⁵

2.2. Wheat prices in local markets

In December 2005 the average price of local wheat was Afs 11.1/kg, which was a very slight decrease (1%) over the November 2005 price. There were not much changes in the average price of wheat in December compared to November on the whole. However, higher prices in the central and southern regions, and lower in the North-east were observed.

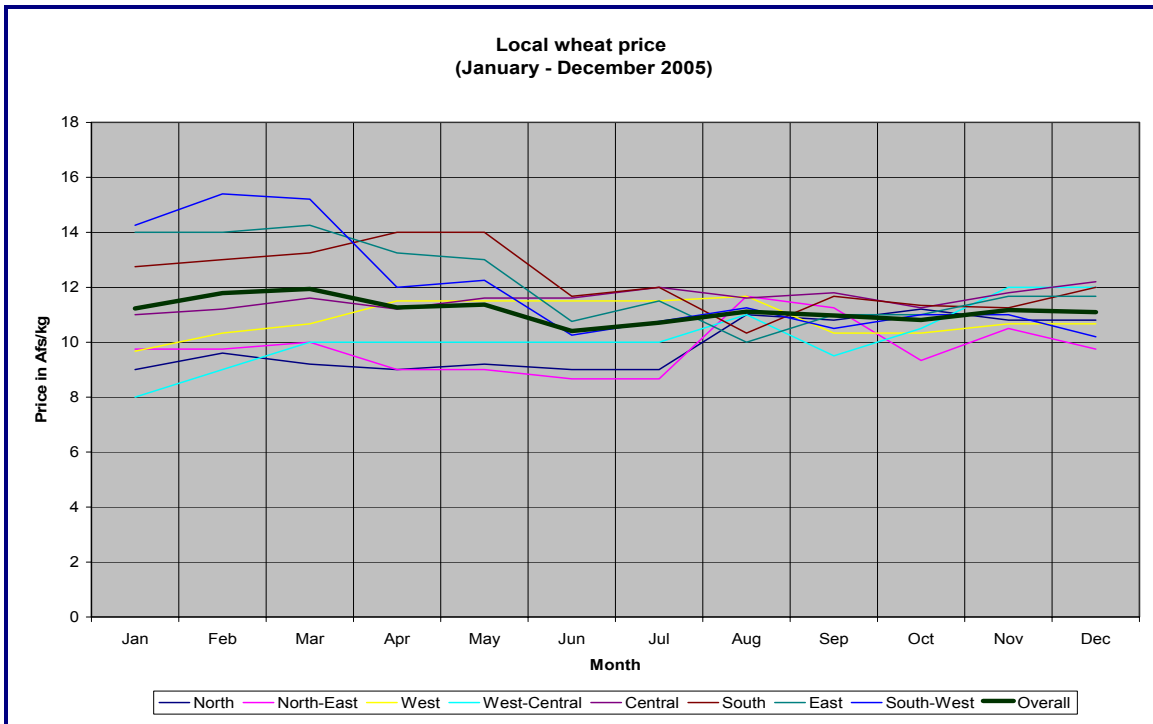
Table 2: Average prices of local wheat in various regions (November - December 2005)

| Region | November 2005 | December 2005 | % increase/ Decrease |
|----------------|----------------------|----------------------|-----------------------------|
| Overall | 11.2 | 11.1 | -1 |
| North | 10.8 | 10.8 | 0 |
| North-East | 10.5 | 9.8 | -7 |
| West | 10.7 | 10.7 | 0 |
| West-Central | 12.0 | 12.0 | 0 |
| Central | 11.8 | 12.2 | 3 |
| South | 11.3 | 12.0 | 7 |
| East | 11.7 | 11.7 | 0 |
| South-West | 11.0 | 10.2 | -7 |

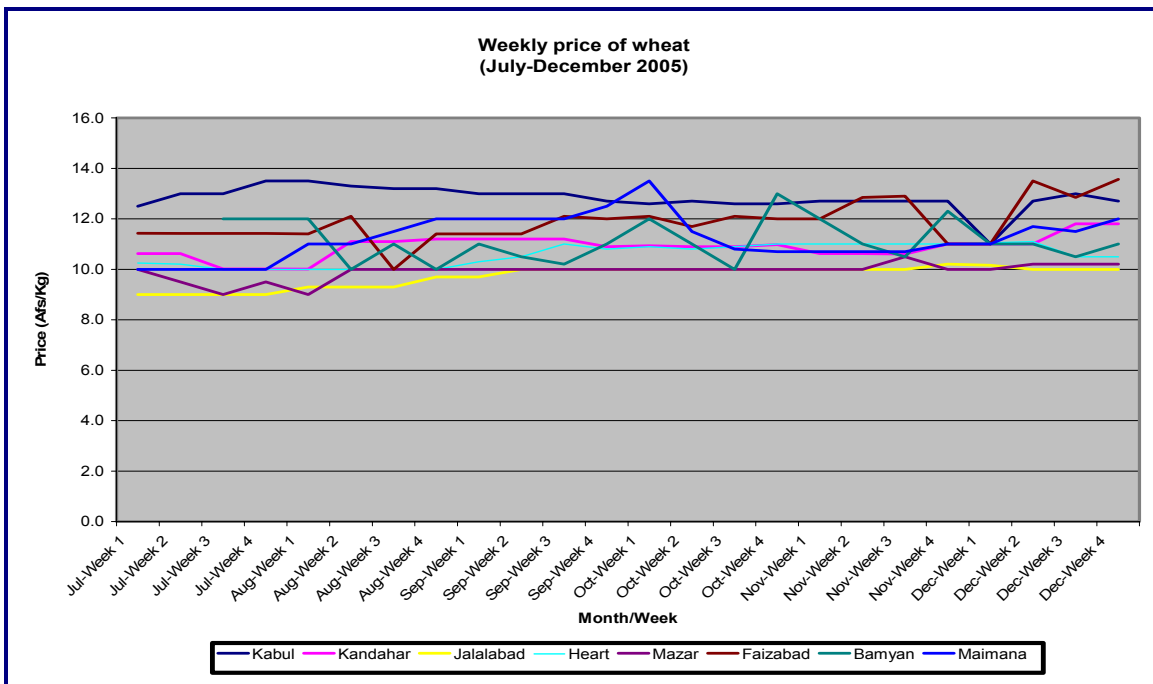
The average price of local wheat was slightly above Afs 11/kg in January-March 2005. The price variations across provinces were very wide in that period and the price-trend showed slightly increasing tendency. The latter fact is consistent with the demand for wheat seed for the spring planting. Thereafter, the wheat price decreased moderately up to June, which can be explained satisfactorily by the year's bumper harvest prospects. The 2005 wheat price showed a tendency to stabilize in June through August, especially in the breadbasket areas of north and north-east, which subsequently rallied into September through December. The price variations across provinces also considerably narrowed (10-12 Afs/kg on average) after September.

⁴ FOB; Gulf of Mexico and Pacific North West

⁵ Source: US Wheat Associates



The price of wheat in urban places like Kabul has also been stable after the main harvest. This indicates that the market response was good and the local grain markets have performed very well in 2005.



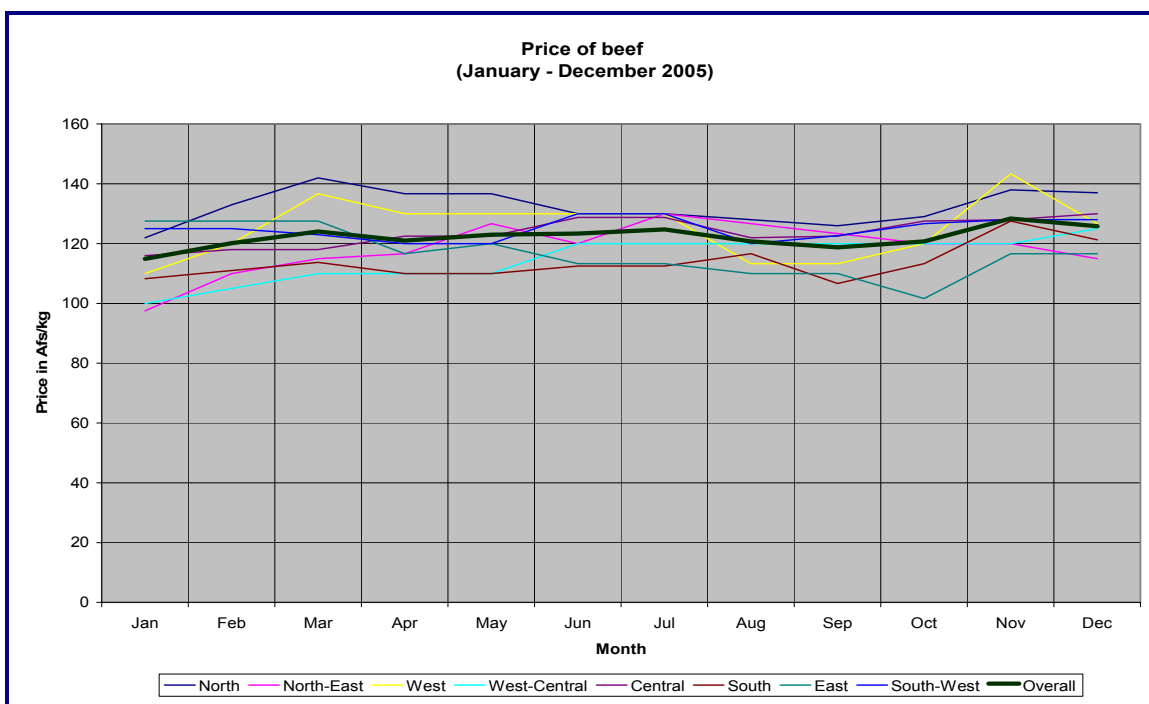
2.3. Livestock and livestock products prices

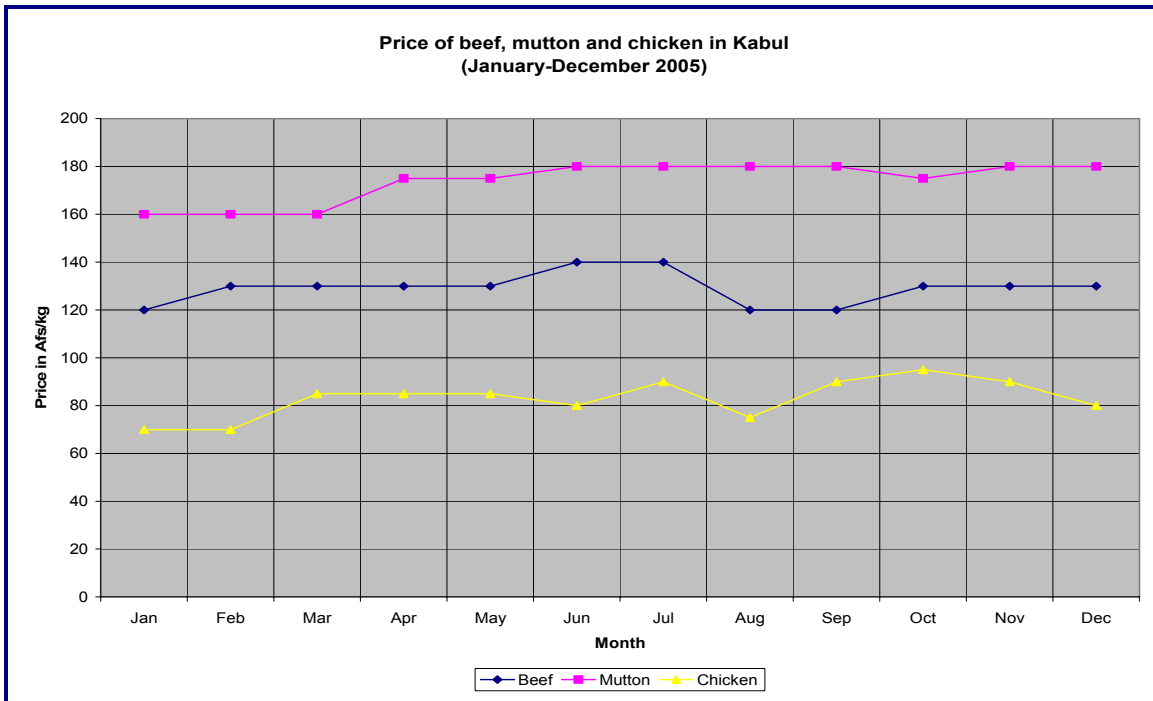
The average price of beef in December was Afs 126/kg. The prices of all types of meat in December 2005 were slightly lower than in November. North-east and west-central regions of the country experienced gradual increase in price of beef in the January-November 2005 period, but the price in the east showed a generally decreasing trend in the same period.

**Table 3: Average prices of beef, mutton and chicken
(November - December 2005)**

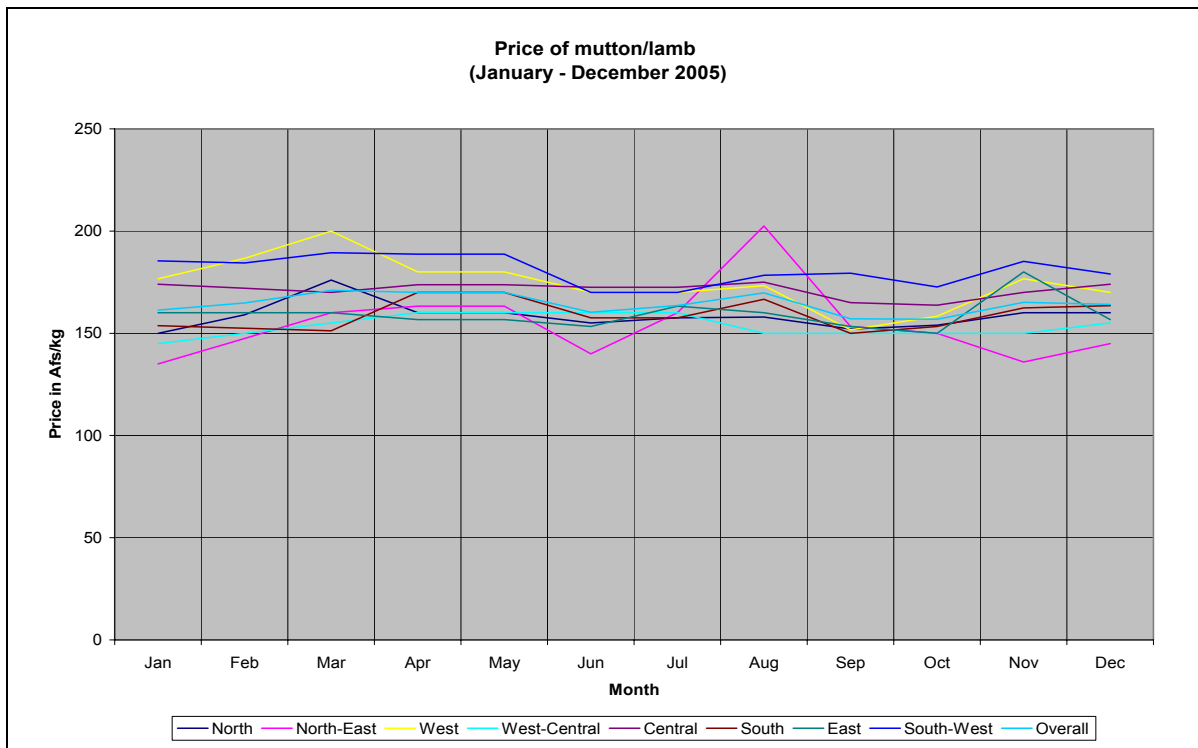
| Region | November 2005 | December 2005 | % increase/decrease |
|---------|---------------|---------------|---------------------|
| Beef | 128.4 | 125.8 | -2 |
| Mutton | 165.2 | 164.2 | -1 |
| Chicken | 86.4 | 83.1 | -4 |

For other markets, price of beef increased up to March. Beef became generally cheaper after March. By September beef-price in these markets reached the level of January 2004 price. The difference in beef price across markets narrowed (Afs 110-130/kg) in June-December.

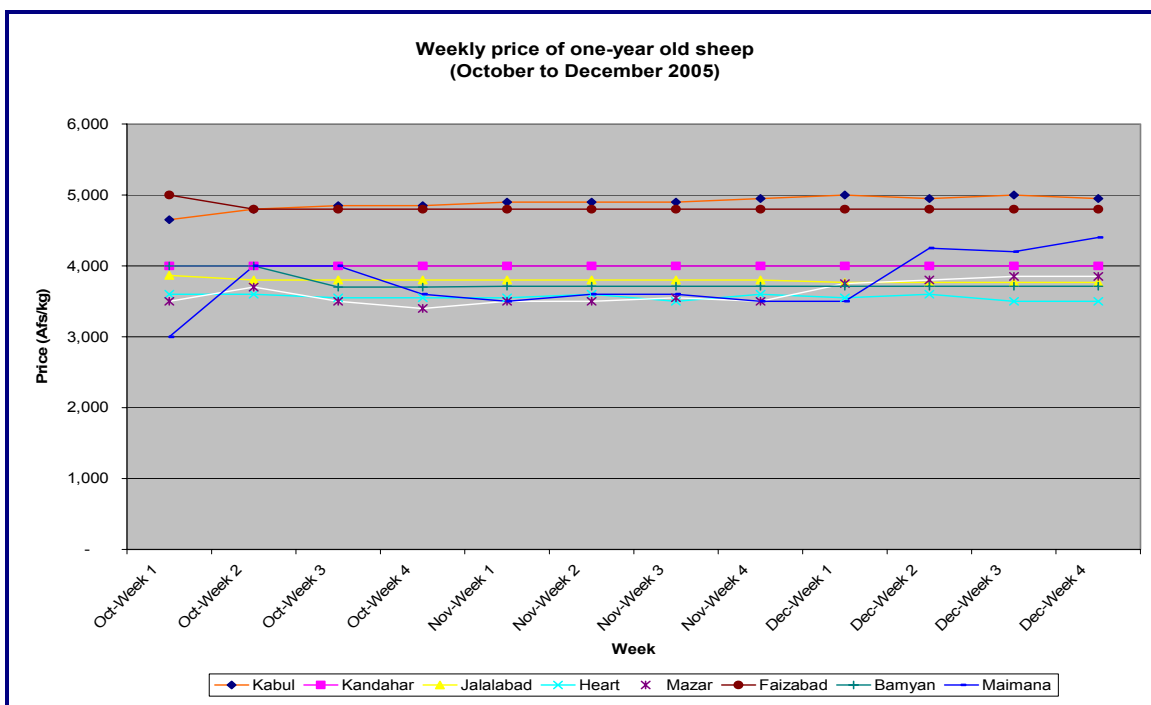




Average price of mutton in December 2005 was Afs 164/kg. There was a slight increase in the price up to March. Thereafter, decrease or at par price was observed up to June/July. This was followed by a slightly upward movement before reaching or off-setting the January 2004 level in November 2005. The price difference across markets also narrowed considerably in July, but did not stabilize.



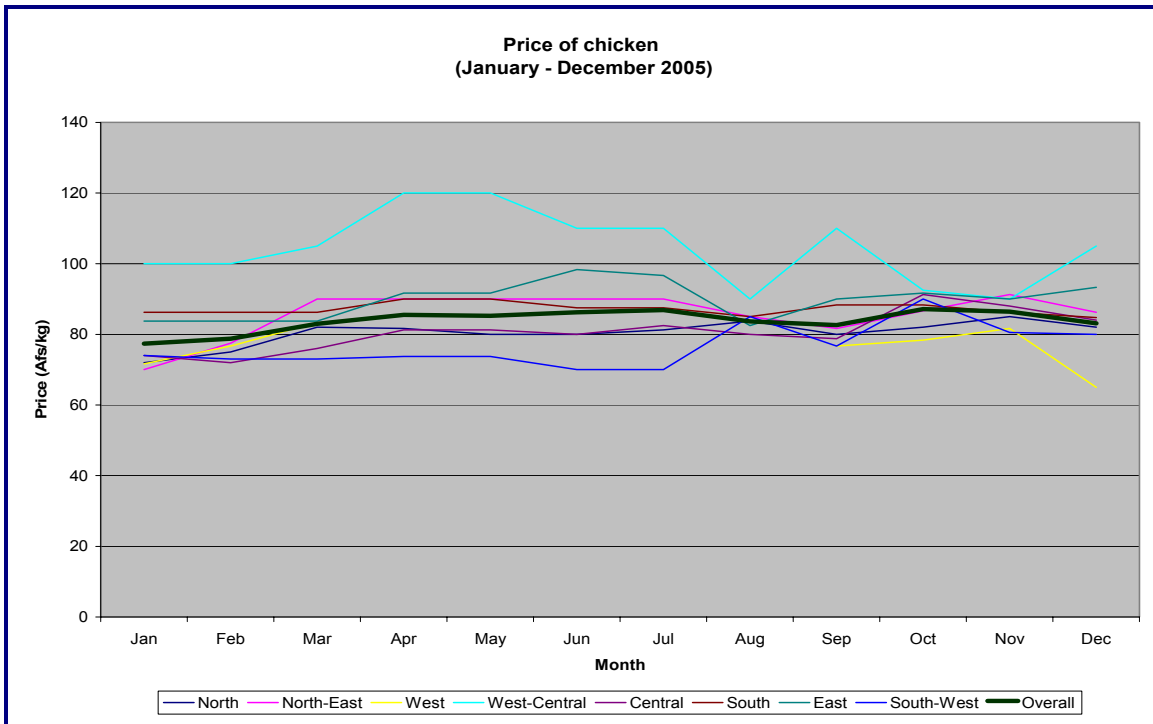
In December average price of a one-year sheep ranged between Afs 3,500 to 5,000 for most of the reporting locations⁶.



Generally the price pattern of sheep shows expected seasonal behavior. In earlier months of 2005 sheep were cheapest in the north, but the seasonal price variations in these areas were significantly higher. The price of sheep exhibited a consistent seasonal price movement up to May in all areas. The price was moderately higher from January to May. In the East and West-Central region there was a decrease in the price from June to August. The price in September was higher than in August. In other areas, the price rose higher from June to August, before having a mixed trend in September. As expected, the seasonal variations in the price of sheep were lesser in regulated markets.

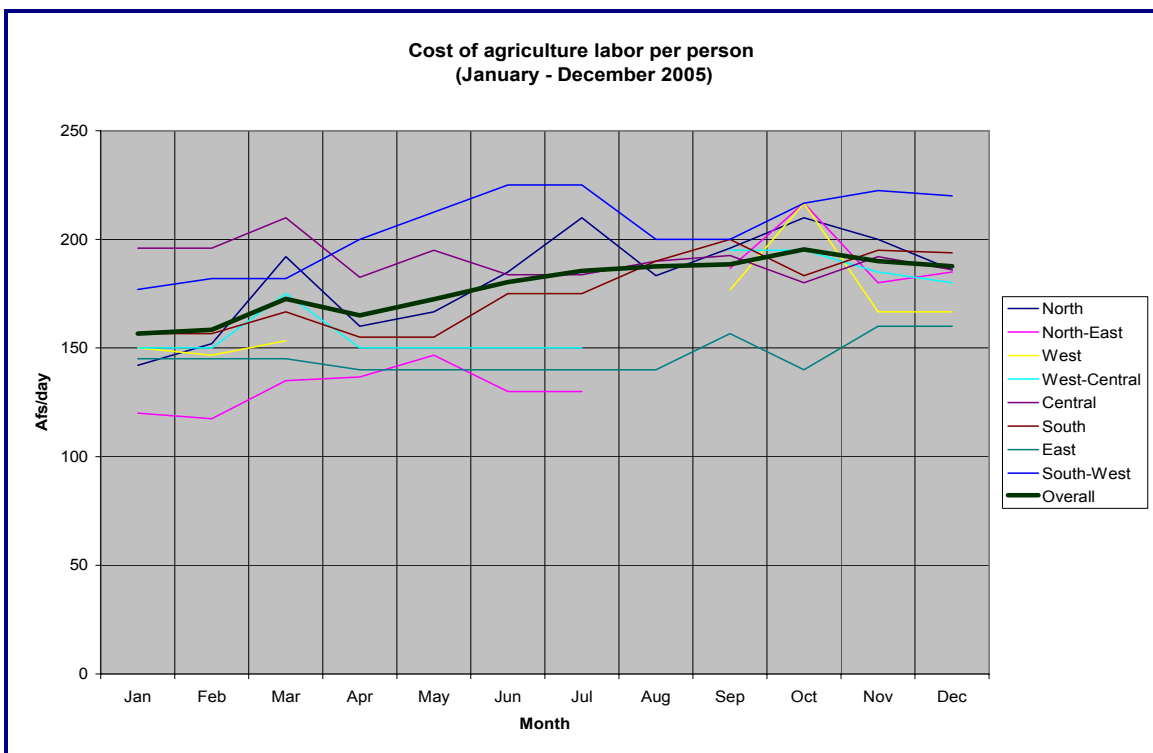
With an average price of Afs 83/kg in December chicken prices across regions showed considerable variations. They were cheapest in the west! Early in the year the price of chicken showed considerable spatial variations (70-120 Afs/kg).

⁶ Source: WFP



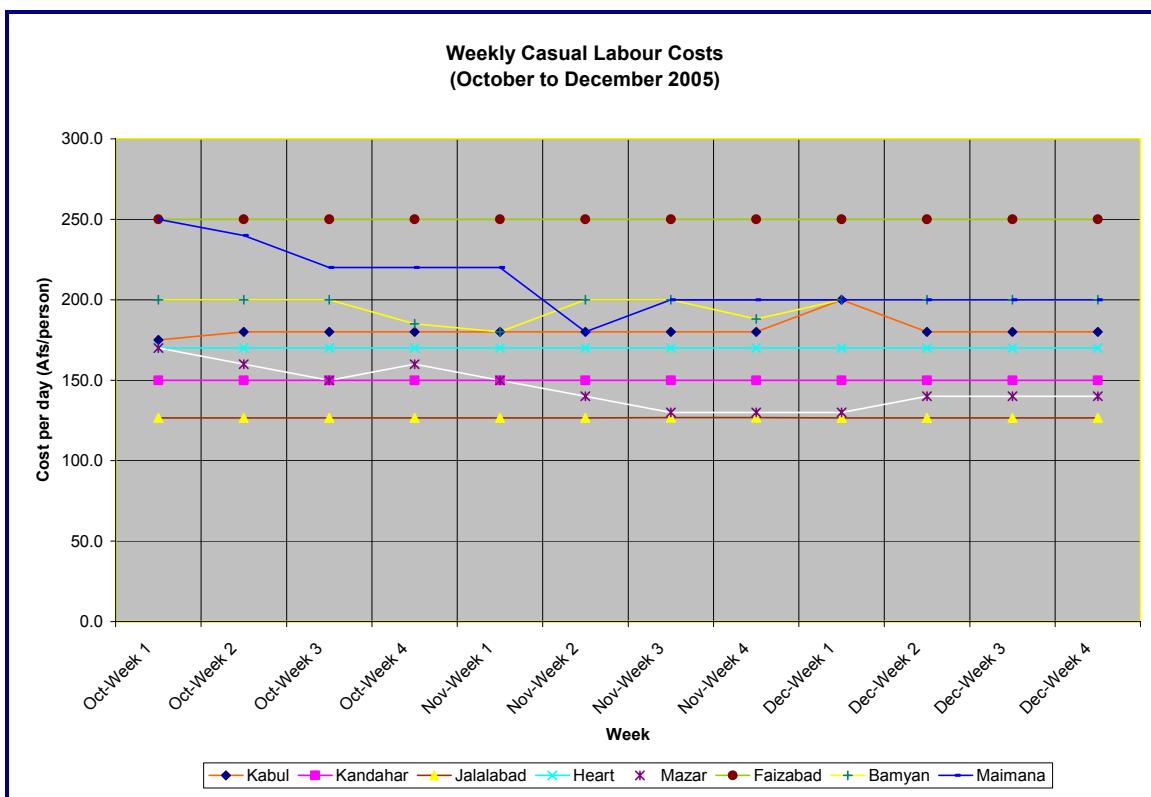
2.4. Labor costs

Average agriculture labor cost was around 187 Afs/day/person in December 2005. The agricultural labor costs show large variations across provinces and between seasons.



The peak demands for agricultural labor are in June/July and in October/November, when the main farm operations are carried-out.

The cost of casual labor⁷ ranged between 127-250 Afs/day in December. It does not show much seasonal variations. The casual labor costs are lowest in Jalalabad (East), Kandahar (South-west) and Herat (West), in that order. North and North-East are unstable market for casual labor. The labor costs are stable, especially in Central, East, South-west, West-Central (partly) and West.



2.5. Fertilizer prices⁸

In the world market, urea this year is cheaper than the last two year. However, stronger demand in coming months is expected to increase its prices. The DAP prices are about 5-12 percent higher than a year ago. Unlike urea price, DAP price is expected to remain stable in the coming months. DAP prices in the world market has remained stable during the last few months.

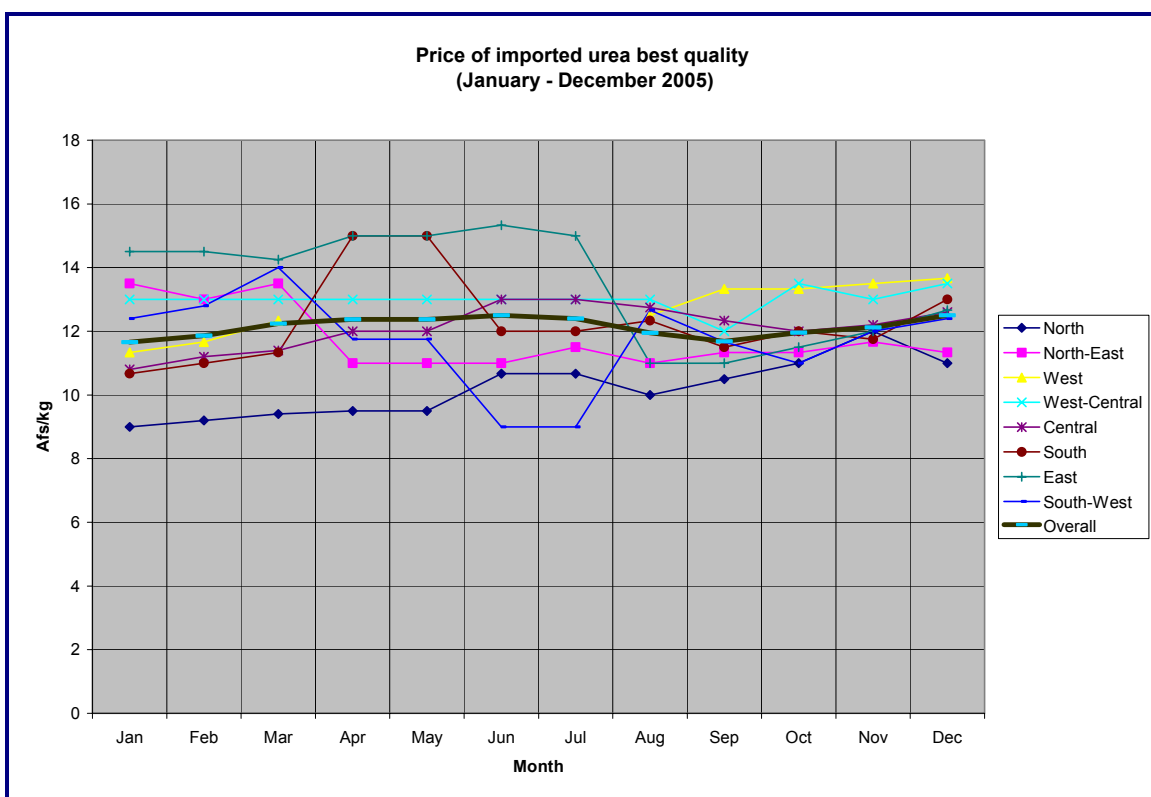
⁷ Source: WFP

⁸ The price of fertilizer per bag expressed in Afs/kg

Table 2: Fertilizer spot prices (FOB US\$/tonne) in the world market⁹

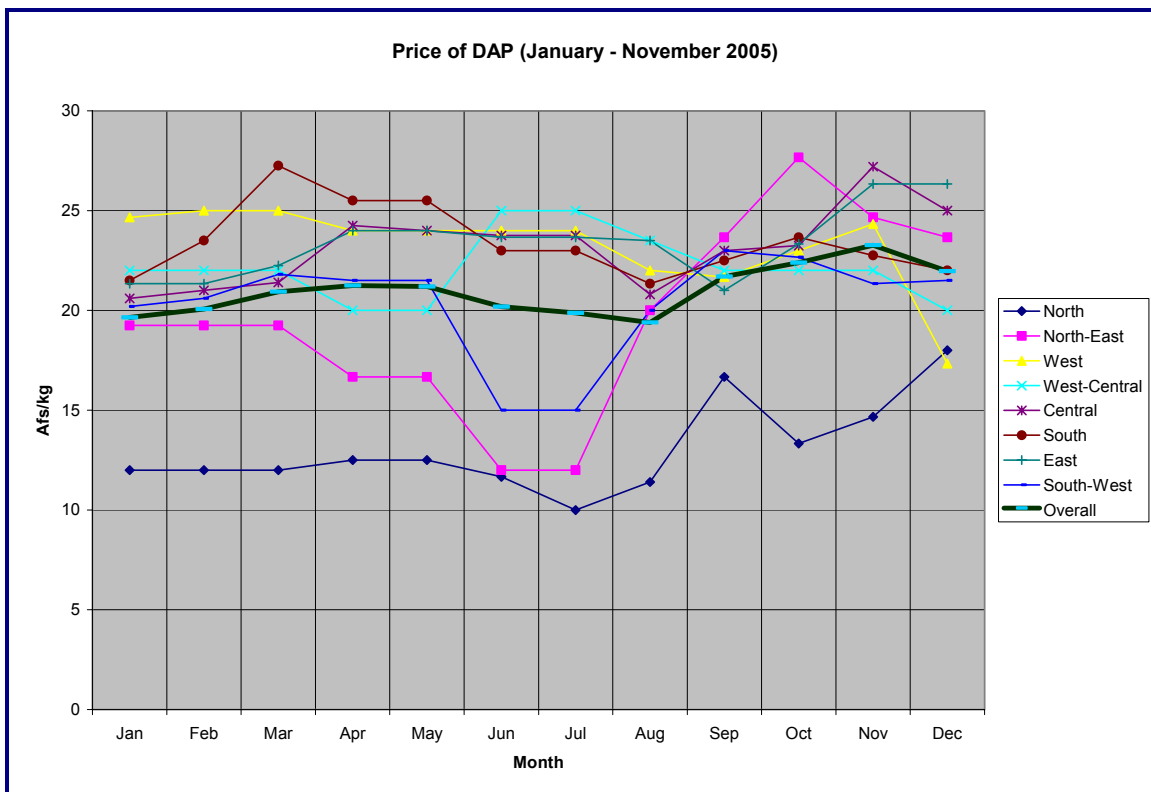
| Type | Location (Bulk fob) | Oct-05 | Nov-05 | Nov-04 | % change |
|------|---------------------|-----------|-----------|-----------|----------|
| Urea | Persian Gulf | 243 – 249 | 248 – 252 | 249 – 254 | -2.2 |
| DAP | US Gulf | 266 – 267 | 265 – 266 | 235 – 237 | 12.9 |

In Afghanistan the average price of best quality imported urea was Afs 13/kg (US\$260/tonne) in December. The price of urea was stable after April in the West-Central region, north and north-east and east. The Central parts experienced slight rise in urea price from May to July. From June the price of urea showed a relatively consistent pattern across regions. The price patterns suggest that the South and South-West are thin markets for this commodity.



⁹ Source: FAO

In December 2005 the average price of the best quality DAP was Afs 22/kg. In January-August 2005, spatial variation in DAP prices was very large indeed and the price was rising. For example, compared to August, the price of DAP was 20% higher in November. DAP price declined after November. For most of the regions, the average price of DAP in December was at par with or lower compared to the November price.



DAP is costly and its prices are highly variable in Afghanistan. The large variations in DAP prices across provinces can be attributed to: (i) the marked difference in the quality of DAP available in the markets and (ii) the transportation costs involved.

The seasonal prices of DAP in the case of north, north-east, south-west and south showed quite similar pattern. Price in the east (Afs 22-24/kg) and west (Afs 22-25/kg) were most stable. DAP prices in north are more consistent with the international price.

**Annex I: National Consumer Price Index (CPI) December 2004 to November 2005
(March 2004 = 100)**

| Item | Weights | Dec 04 | Jan 05 | Feb 05 | Mar 05 | Apr 05 | May 05 | Jun 05 | Jul 05 | Aug 05 | Sep 05 | Oct 05 | Nov 05 |
|-----------------------------|--------------|--------------|--------------|--------------|--------------|--------------|--------------|--------------|--------------|--------------|--------------|--------------|--------------|
| OVERALL INDEX | 100.0 | 108.4 | 109.3 | 110.4 | 111.6 | 111.9 | 113.1 | 113.9 | 114.3 | 114.8 | 116.3 | 117.6 | 119.2 |
| Food Index | 60.6 | 104.1 | 104.9 | 106.7 | 108.7 | 109.1 | 110.6 | 111.4 | 111.4 | 111.8 | 113.1 | 114.2 | 114.4 |
| Bread and cereals | 25.2 | 105.9 | 107.7 | 111.4 | 114.9 | 113.8 | 116.6 | 118.6 | 118.9 | 119.5 | 122.1 | 123.9 | 123.6 |
| Meat | 5.1 | 102.7 | 105.0 | 106.8 | 108.8 | 106.6 | 107.0 | 107.3 | 107.3 | 107.6 | 108.2 | 108.3 | 109.1 |
| Milk, cheese and eggs | 5.4 | 104.0 | 104.6 | 104.5 | 103.4 | 105.2 | 104.7 | 105.1 | 106.4 | 107.0 | 108.2 | 111.3 | 112.1 |
| Oils and fats | 5.9 | 95.2 | 95.3 | 96.0 | 95.4 | 95.4 | 94.8 | 93.8 | 94.3 | 94.6 | 95.2 | 96.1 | 94.9 |
| Fresh and dried fruits | 5.6 | 107.5 | 105.1 | 101.5 | 103.0 | 104.8 | 106.2 | 106.9 | 108.3 | 107.6 | 106.8 | 107.0 | 106.5 |
| Vegetables including tubers | 6.6 | 108.4 | 107.7 | 110.7 | 112.6 | 117.3 | 119.9 | 119.2 | 114.9 | 115.4 | 116.0 | 116.7 | 118.3 |
| Sugar and sweets | 1.8 | 104.2 | 104.7 | 106.1 | 108.5 | 110.6 | 111.6 | 112.0 | 113.1 | 115.0 | 115.8 | 114.7 | 116.5 |
| Spices | 1.2 | 100.1 | 100.2 | 99.9 | 104.5 | 105.2 | 105.9 | 105.6 | 106.6 | 105.5 | 106.4 | 105.6 | 110.0 |
| Non-alcoholic beverages | 2.0 | 99.7 | 99.8 | 99.6 | 100.2 | 101.3 | 101.6 | 102.4 | 102.4 | 102.5 | 101.8 | 100.8 | 101.0 |
| Cigarrates and tobacco | 1.8 | 94.1 | 94.7 | 95.9 | 96.7 | 98.6 | 98.6 | 98.6 | 98.2 | 98.9 | 96.9 | 96.4 | 96.8 |
| Non-food Index | 39.4 | 115.0 | 116.1 | 116.0 | 116.1 | 116.1 | 116.8 | 117.7 | 118.7 | 119.3 | 121.1 | 122.8 | 126.6 |
| Exchange rate Index | | 94.7 | 98.4 | 99.7 | 98.9 | 98.6 | 100.1 | 100.5 | 100.5 | 99.2 | 102.5 | 104.5 | 98.2 |

Source: Central Statistics Office

**Annex II: Kabul Consumer Price Index for January- to December, 2005
(December 2002 = 100)**

| Item | Weights | Jan 05 | Feb 05 | Mar 05 | Apr 05 | May 05 | Jun 05 | Jul 05 | Aug 05 | Sep 05 | Oct 05 | Nov 05 | Dec 05 |
|-----------------------------|--------------|--------------|--------------|--------------|--------------|--------------|--------------|--------------|--------------|--------------|--------------|--------------|--------------|
| OVERALL INDEX | 100.0 | 119.4 | 120.8 | 123.0 | 123.7 | 124.9 | 125.9 | 126.2 | 126.9 | 129.3 | 130.6 | 132.0 | 133.7 |
| Food | 60.6 | 114.4 | 116.8 | 120.3 | 121.1 | 122.3 | 122.8 | 122.5 | 122.7 | 124.1 | 125.4 | 125.9 | 126.3 |
| Bread and cereals | 25.2 | 123.8 | 129.5 | 134.8 | 134.6 | 136.4 | 137.2 | 136.3 | 136.4 | 139.4 | 141.9 | 142.9 | 143.2 |
| Meat | 5.1 | 135.2 | 135.6 | 137.7 | 143.5 | 145.6 | 146.4 | 145.3 | 145.6 | 145.4 | 146.3 | 146.0 | 146.8 |
| Milk, cheese and eggs | 5.4 | 120.2 | 121.0 | 120.4 | 120.4 | 119.5 | 119.2 | 119.0 | 120.3 | 121.7 | 122.6 | 122.4 | 123.2 |
| Oils and fats | 5.9 | 96.0 | 97.2 | 97.4 | 96.5 | 95.3 | 95.2 | 95.3 | 94.5 | 94.8 | 95.0 | 95.1 | 94.6 |
| Fresh and dried fruits | 5.6 | 107.1 | 104.8 | 109.0 | 110.6 | 112.6 | 113.9 | 114.4 | 114.2 | 114.7 | 116.8 | 117.0 | 117.5 |
| Vegetables including tubers | 6.6 | 87.2 | 87.8 | 93.2 | 95.4 | 97.4 | 96.0 | 96.3 | 96.4 | 96.3 | 95.6 | 95.4 | 96.3 |
| Sugar and sweets | 1.8 | 117.2 | 117.7 | 120.7 | 121.4 | 123.5 | 124.2 | 124.4 | 127.4 | 127.3 | 126.6 | 127.2 | 127.0 |
| Spices | 1.2 | 96.9 | 97.0 | 101.8 | 102.9 | 104.9 | 108.2 | 111.3 | 112.6 | 111.5 | 114.0 | 116.3 | 117.5 |
| Non-alcoholic beverages | 2.0 | 108.5 | 107.5 | 109.0 | 109.4 | 109.6 | 190.9 | 110.1 | 109.6 | 109.2 | 109.3 | 110.6 | 111.1 |
| Cigarettes and tobacco | 1.8 | 102.5 | 102.4 | 102.2 | 102.4 | 102.3 | 102.1 | 102.1 | 102.2 | 104.1 | 104.1 | 104.3 | 104.2 |
| Non-food Index | 39.4 | 127.0 | 127.0 | 127.0 | 127.8 | 129.0 | 130.8 | 132.1 | 133.4 | 137.2 | 138.7 | 141.4 | 145.0 |
| Exchange rate Index | | 96.6 | 97.9 | 97.1 | 96.8 | 98.3 | 98.7 | 98.7 | 97.4 | 97.4 | 96.7 | 96.4 | 98.5 |

Source: Central Statistics Office

Annex III (Part 1)

Weekly Market price of agricultural commodities/services
[Source: Vulnerability Mapping Unit (VAM), WFP Afghanistan]

| Location | Commodity/Service | Jul-05 | | | | Aug-05 | | | | Sep-05 | | | |
|-----------|-------------------|--------|--------|--------|--------|--------|--------|--------|--------|--------|--------|--------|--------|
| | | Week 1 | Week 2 | Week 3 | Week 4 | Week 1 | Week 2 | Week 3 | Week 4 | Week 1 | Week 2 | Week 3 | Week 4 |
| Kabul | Wheat (kg) | 12.5 | 13.0 | 13.0 | 13.5 | 13.5 | 13.3 | 13.2 | 13.2 | 13.0 | 13.0 | 13.0 | 12.7 |
| Kandahar | Wheat (kg) | 10.6 | 10.6 | 10.0 | 10.0 | 10.0 | 11.1 | 11.1 | 11.2 | 11.2 | 11.2 | 11.2 | 10.9 |
| Jalalabad | Wheat (kg) | 9.0 | 9.0 | 9.0 | 9.0 | 9.3 | 9.3 | 9.3 | 9.7 | 9.7 | 10.0 | 10.0 | 10.0 |
| Heart | Wheat (kg) | 10.3 | 10.2 | 10.0 | 10.0 | 10.0 | 10.0 | 10.0 | 10.0 | 10.3 | 10.5 | 11.0 | 10.8 |
| Mazar | Wheat (kg) | 10.0 | 9.5 | 9.0 | 9.5 | 9.0 | 10.0 | 10.0 | 10.0 | 10.0 | 10.0 | 10.0 | 10.0 |
| Faizabad | Wheat (kg) | 11.4 | 11.4 | 11.4 | 11.4 | 11.4 | 12.1 | 10.0 | 11.4 | 11.4 | 11.4 | 12.1 | 12.0 |
| Bamyan | Wheat (kg) | 12.3 | | 12.0 | 12.0 | 12.0 | 10.0 | 11.0 | 10.0 | 11.0 | 10.5 | 10.2 | 11.0 |
| Maimana | Wheat (kg) | 10.0 | 10.0 | 10.0 | 10.0 | 11.0 | 11.0 | 11.5 | 12.0 | 12.0 | 12.0 | 12.0 | 12.5 |
| Kabul | Wheat flour (kg) | 14.1 | 14.1 | 14.1 | 14.1 | 14.3 | 14.2 | 14.0 | 14.0 | 13.8 | 13.6 | 13.6 | 13.5 |
| Kandahar | Wheat flour (kg) | 12.6 | 12.6 | 12.6 | 12.8 | 12.9 | 12.6 | 12.5 | 12.4 | 12.4 | 12.4 | 12.6 | 12.6 |
| Jalalabad | Wheat flour (kg) | 12.8 | 12.8 | 12.8 | 12.8 | 13.0 | 13.2 | 13.2 | 13.3 | 13.3 | 13.3 | 13.3 | 13.3 |
| Heart | Wheat flour (kg) | 13.8 | 13.8 | 13.8 | 14.0 | 14.5 | 14.4 | 14.4 | 14.3 | 14.5 | 13.6 | 13.6 | 14.5 |
| Mazar | Wheat flour (kg) | 11.0 | 11.0 | 11.0 | 11.5 | 11.0 | 12.0 | 12.0 | 12.0 | 12.0 | 12.5 | 12.0 | 12.0 |
| Faizabad | Wheat flour (kg) | 14.3 | 12.9 | 14.2 | 14.2 | 14.3 | 13.6 | 14.3 | 14.8 | 15.7 | 15.7 | 15.0 | 15.0 |
| Bamyan | Wheat flour (kg) | 14.3 | | 14.0 | 14.1 | 14.0 | 14.0 | 14.0 | 14.0 | 13.8 | 14.2 | 14.0 | 14.0 |
| Maimana | Wheat flour (kg) | 13.5 | 13.5 | 14.0 | 14.0 | 13.0 | 14.0 | 14.5 | 14.5 | 13.5 | 14.0 | 14.0 | 14.5 |
| Kabul | Bread (kg) | 18.0 | 18.0 | 18.0 | 30.0 | 18.0 | 18.0 | 18.0 | 18.0 | 18.0 | 18.0 | 18.0 | 18.0 |
| Kandahar | Bread (kg) | 20.0 | 20.0 | 20.0 | 20.0 | 20.0 | 20.0 | 20.0 | 20.0 | 20.0 | 20.0 | 20.0 | 20.0 |
| Jalalabad | Bread (kg) | 17.6 | 17.6 | 17.6 | 17.6 | 17.6 | 17.6 | 17.6 | 17.6 | 17.6 | 17.6 | 17.6 | 17.6 |
| Heart | Bread (kg) | 20.0 | 20.0 | 20.0 | 20.0 | 20.0 | 20.0 | 20.0 | 20.0 | 20.0 | 20.0 | 20.0 | 20.0 |
| Mazar | Bread (kg) | 20.0 | 20.0 | 20.0 | 20.0 | 20.0 | 20.0 | 20.0 | 20.0 | 20.0 | 20.0 | 20.0 | 20.0 |
| Faizabad | Bread (kg) | 33.3 | 33.3 | 33.3 | 33.3 | 33.3 | 33.3 | 33.3 | 33.3 | 33.3 | 33.3 | 33.3 | 33.3 |
| Bamyan | Bread (kg) | 30.0 | | 30.0 | 30.0 | 30.0 | 30.0 | 18.2 | 18.2 | 30.0 | 30.0 | 30.0 | 17.8 |
| Maimana | Bread (kg) | 33.3 | 33.3 | 33.3 | 33.3 | 33.3 | 33.3 | 33.3 | 33.3 | 33.3 | 33.3 | 33.0 | 33.3 |

Annex III (Part 1)

**Weekly Market price of agricultural commodities/services
[Source: Vulnerability Mapping Unit (VAM), WFP Afghanistan]**

| Location | Commodity/Service | Jul-05 | | | | Aug-05 | | | | Sep-05 | | | |
|-----------|-----------------------------|--------|--------|--------|--------|--------|--------|--------|--------|--------|--------|--------|--------|
| | | Week 1 | Week 2 | Week 3 | Week 4 | Week 1 | Week 2 | Week 3 | Week 4 | Week 1 | Week 2 | Week 3 | Week 4 |
| Kabul | Diesel/litre | 24.0 | 24.0 | 24.0 | 25.0 | 25.5 | 26.0 | 26.0 | 27.0 | 27.0 | 27.0 | 29.0 | 32.0 |
| Kandahar | Diesel/litre | 22.5 | 24.0 | 25.0 | 25.0 | 25.0 | 24.5 | 24.5 | 25.0 | 27.5 | 30.0 | 30.0 | 30.0 |
| Jalalabad | Diesel/litre | 25.2 | 25.0 | 25.3 | 26.6 | 26.3 | 26.3 | 26.8 | 26.8 | 26.8 | 34.0 | 34.3 | 32.6 |
| Heart | Diesel/litre | 22.0 | 22.0 | 25.0 | 25.0 | 25.0 | 25.0 | 25.0 | 25.0 | 25.0 | 27.0 | 27.0 | 27.0 |
| Mazar | Diesel/litre | 24.0 | 24.0 | 24.0 | 24.0 | 24.0 | 25.0 | 24.0 | 24.0 | 40.0 | 32.0 | 30.0 | 32.0 |
| Faizabad | Diesel/litre | 28.0 | 28.0 | 29.0 | 28.0 | 28.0 | 30.0 | 32.0 | 32.0 | 42.0 | 41.0 | 40.0 | 40.0 |
| Bamyan | Diesel/litre | 28.0 | | 27.0 | 27.0 | 28.0 | 28.0 | 28.0 | 29.0 | 31.0 | 39.0 | 39.0 | 37.0 |
| Maimana | Diesel/litre | 24.5 | 25.0 | 25.0 | 25.0 | 26.0 | 26.0 | 27.0 | 26.0 | 27.0 | 32.0 | 29.0 | 30.0 |
| Kabul | One-year female sheep, live | 4,850 | 4,850 | 4,850 | 4,890 | 4,800 | 4,650 | 4,850 | 4,800 | 4,750 | 4,800 | 4,900 | 4,700 |
| Kandahar | One-year female sheep, live | 4,000 | 4,000 | 4,000 | 4,000 | 4,000 | 4,000 | 4,000 | 4,000 | 4,000 | 4,000 | 4,000 | 4,000 |
| Jalalabad | One-year female sheep, live | 4,200 | 4,200 | 4,200 | 4,166 | 4,166 | 4,166 | 4,166 | 4,100 | 4,266 | 4,066 | 3,866 | 3,866 |
| Heart | One-year female sheep, live | 3,800 | 3,900 | 3,800 | 3,850 | 3,800 | 3,750 | 3,800 | 3,750 | 3,700 | 3,650 | 3,600 | 3,500 |
| Mazar | One-year female sheep, live | 3,800 | 3,800 | 3,200 | 3,300 | 3,200 | 3,000 | 3,100 | 3,200 | 3,400 | 3,400 | 3,500 | 3,500 |
| Faizabad | One-year female sheep, live | 5,000 | 5,000 | 5,000 | 5,000 | 5,000 | 5,000 | 5,000 | 5,000 | 5,000 | 5,000 | 5,000 | 5,000 |
| Bamyan | One-year female sheep, live | 3,830 | | 3,800 | 3,750 | 3,730 | 3,500 | 2,000 | 2,000 | 3,720 | 3,700 | 3,700 | 4,000 |
| Maimana | One-year female sheep, live | 4,300 | 4,500 | 4,500 | 4,500 | 3,500 | 4,000 | 4,000 | 4,000 | 4,000 | 3,800 | 3,600 | 3,800 |
| Kabul | Casual labour/day | 170.0 | 180.0 | 180.0 | 180.0 | 180.0 | 180.0 | 180.0 | 180.0 | 175.0 | 175.0 | 180.0 | 175.0 |
| Kandahar | Casual labour/day | 150.0 | 150.0 | 150.0 | 150.0 | 150.0 | 150.0 | 150.0 | 150.0 | 150.0 | 150.0 | 150.0 | 150.0 |
| Jalalabad | Casual labour/day | 126.6 | 126.6 | 126.6 | 125.0 | 126.6 | 126.6 | 126.6 | 126.6 | 126.6 | 126.6 | 126.6 | 126.6 |
| Heart | Casual labour/day | 155.0 | 160.0 | 160.0 | 160.0 | 160.0 | 160.0 | 160.0 | 160.0 | 170.0 | 170.0 | 170.0 | 170.0 |
| Mazar | Casual labour/day | 180.0 | 180.0 | 170.0 | 180.0 | 180.0 | 170.0 | 180.0 | 180.0 | 180.0 | 170.0 | 170.0 | 170.0 |
| Faizabad | Casual labour/day | 200.0 | 200.0 | 200.0 | 200.0 | 200.0 | 200.0 | 200.0 | 200.0 | 200.0 | 200.0 | 250.0 | 250.0 |
| Bamyan | Casual labour/day | 190.0 | | 175.0 | 170.0 | 170.0 | 170.0 | 200.0 | 200.0 | 170.0 | 175.0 | 180.0 | 200.0 |
| Maimana | Casual labour/day | 200.0 | 200.0 | 200.0 | 180.0 | 240.0 | 220.0 | 200.0 | 200.0 | 200.0 | 200.0 | 200.0 | 200.0 |

Annex III (Part 2)

Weekly Market price of agricultural commodities/services
[Source: Vulnerability Mapping Unit (VAM), WFP Afghanistan]

| Location | Commodity/Service | October, 05 | | | | November, 05 | | | | December, 05 | | | |
|-----------|-------------------|-------------|--------|--------|--------|--------------|--------|--------|--------|--------------|--------|--------|--------|
| | | Week 1 | Week 2 | Week 3 | Week 4 | Week 1 | Week 2 | Week 3 | Week 4 | Week 1 | Week 2 | Week 3 | Week 4 |
| Kabul | Wheat (kg) | 12.6 | 12.7 | 12.6 | 12.6 | 12.7 | 12.7 | 12.7 | 12.7 | 11.0 | 12.7 | 13.0 | 12.7 |
| Kandahar | Wheat (kg) | 10.9 | 10.9 | 10.9 | 11.0 | 10.6 | 10.6 | 10.6 | 11.0 | 11.0 | 11.0 | 11.8 | 11.8 |
| Jalalabad | Wheat (kg) | 10.0 | 10.0 | 10.0 | 10.0 | 10.0 | 10.0 | 10.0 | 10.2 | 10.2 | 10.0 | 10.0 | 10.0 |
| Heart | Wheat (kg) | 10.9 | 10.8 | 10.9 | 11.0 | 11.0 | 11.0 | 11.0 | 11.0 | 11.1 | 11.1 | 10.5 | 10.5 |
| Mazar | Wheat (kg) | 10.0 | 10.0 | 10.0 | 10.0 | 10.0 | 10.0 | 10.5 | 10.0 | 10.0 | 10.2 | 10.2 | 10.2 |
| Faizabad | Wheat (kg) | 12.1 | 11.7 | 12.1 | 12.0 | 12.0 | 12.9 | 12.9 | 11.0 | 11.0 | 13.5 | 12.9 | 13.6 |
| Bamyan | Wheat (kg) | 12.0 | 11.0 | 10.0 | 13.0 | 12.0 | 11.0 | 10.5 | 12.3 | 11.0 | 11.0 | 10.5 | 11.0 |
| Maimana | Wheat (kg) | 13.5 | 11.5 | 10.8 | 10.7 | 10.7 | 10.7 | 10.7 | 11.0 | 11.0 | 11.7 | 11.5 | 12.0 |
| Kabul | Wheat flour (kg) | 13.3 | 13.5 | 13.3 | 13.0 | 13.5 | 13.6 | 13.6 | 14.0 | 17.0 | 13.6 | 14.5 | 13.6 |
| Kandahar | Wheat flour (kg) | 12.6 | 12.7 | 12.5 | 13.0 | 12.5 | 12.5 | 12.5 | 13.6 | 13.6 | 13.1 | 13.5 | 13.5 |
| Jalalabad | Wheat flour (kg) | 13.6 | 13.7 | 14.0 | 14.0 | 13.7 | 13.3 | 13.3 | 13.3 | 13.3 | 13.3 | 13.3 | 13.3 |
| Heart | Wheat flour (kg) | 14.0 | 14.3 | 14.5 | 15.0 | 14.4 | 14.5 | 14.4 | 14.5 | 14.5 | 14.9 | 14.3 | 14.3 |
| Mazar | Wheat flour (kg) | 12.0 | 12.5 | 11.0 | 12.0 | 12.0 | 12.0 | 12.5 | 12.0 | 12.0 | 12.5 | 12.5 | 12.5 |
| Faizabad | Wheat flour (kg) | 15.7 | 15.7 | 15.7 | 15.0 | 15.0 | 15.7 | 17.1 | 15.0 | 15.0 | 17.0 | 17.1 | 17.9 |
| Bamyan | Wheat flour (kg) | 14.0 | 15.0 | 14.5 | 14.2 | 14.5 | 15.0 | 13.0 | 14.4 | 14.0 | 14.0 | 13.0 | 12.8 |
| Maimana | Wheat flour (kg) | 15.0 | 14.2 | 13.3 | 14.0 | 13.9 | 13.5 | 13.9 | 14.0 | 13.5 | 13.9 | 13.5 | 14.4 |
| Kabul | Bread (kg) | 18.0 | 18.0 | 18.0 | 18.0 | 18.0 | 18.0 | 18.0 | 18.0 | 20.0 | 18.0 | 18.0 | 18.0 |
| Kandahar | Bread (kg) | 20.0 | 20.0 | 20.0 | 20.0 | 20.0 | 20.0 | 20.0 | 20.0 | 20.0 | 20.0 | 20.0 | 20.0 |
| Jalalabad | Bread (kg) | 17.6 | 17.6 | 17.6 | 18.0 | 17.6 | 17.6 | 17.6 | 17.6 | 17.6 | 17.6 | 17.6 | 17.6 |
| Heart | Bread (kg) | 20.0 | 20.0 | 20.0 | 20.0 | 20.0 | 20.0 | 20.0 | 20.0 | 20.0 | 20.0 | 20.0 | 20.0 |
| Mazar | Bread (kg) | 20.0 | 20.0 | 20.0 | 20.0 | 20.0 | 20.0 | 25.0 | 25.0 | 20.0 | 20.0 | 20.0 | 20.0 |
| Faizabad | Bread (kg) | 33.3 | 33.3 | 33.3 | 33.0 | 33.3 | 33.3 | 33.3 | 33.3 | 33.3 | 33.3 | 33.3 | 33.3 |
| Bamyan | Bread (kg) | 21.4 | 21.4 | 21.4 | 30.0 | 30.0 | 30.0 | 22.0 | 30.0 | 30.0 | 30.0 | 30.0 | 30.0 |
| Maimana | Bread (kg) | 33.3 | 25.0 | 25.0 | 25.0 | 25.0 | 25.0 | 25.0 | 25.0 | 25.0 | 25.0 | 25.0 | 25.0 |

Annex III (Part 2)

Weekly Market price of agricultural commodities/services
[Source: Vulnerability Mapping Unit (VAM), WFP Afghanistan]

| Location | Commodity/Service | October, 05 | | | | November, 05 | | | | December, 05 | | | |
|-----------|-----------------------------|-------------|--------|--------|--------|--------------|--------|--------|--------|--------------|--------|--------|--------|
| | | Week 1 | Week 2 | Week 3 | Week 4 | Week 1 | Week 2 | Week 3 | Week 4 | Week 1 | Week 2 | Week 3 | Week 4 |
| Kabul | Diesel/litre | 32.0 | 32.0 | 32.0 | 32.0 | 34.0 | 35.0 | 35.0 | 35.0 | 36.0 | 35.0 | 38.0 | 37.0 |
| Kandahar | Diesel/litre | 29.0 | 30.0 | 30.0 | 31.0 | 32.0 | 33.0 | 33.0 | 32.0 | 34.0 | 34.0 | 36.0 | 34.5 |
| Jalalabad | Diesel/litre | 32.3 | 32.3 | 32.3 | 32.0 | 32.3 | 32.3 | 35.3 | 35.3 | 37.2 | 37.2 | 37.2 | 37.3 |
| Heart | Diesel/litre | 28.0 | 28.0 | 28.0 | 28.0 | 29.0 | 30.0 | 30.0 | 31.0 | 30.0 | 32.0 | 33.0 | 33.0 |
| Mazar | Diesel/litre | 31.0 | 32.0 | 30.0 | 32.0 | 32.0 | 32.8 | 35.0 | 36.0 | 36.0 | 36.0 | 36.0 | 36.0 |
| Faizabad | Diesel/litre | 38.0 | 38.0 | 37.0 | 36.0 | 37.0 | 38.0 | 38.0 | 38.0 | 45.0 | 45.0 | 50.0 | 50.0 |
| Bamyan | Diesel/litre | 37.0 | 37.0 | 37.0 | 36.0 | 35.5 | 37.0 | 37.0 | 36.2 | 28.0 | 37.0 | 40.0 | 40.0 |
| Maimana | Diesel/litre | 30.0 | 29.0 | 30.0 | 30.0 | 32.0 | 34.0 | 34.0 | 35.0 | 38.0 | 38.0 | 37.0 | 34.0 |
| Kabul | One-year female sheep, live | 4,650 | 4,800 | 4,850 | 4,850 | 4,900 | 4,900 | 4,900 | 4,950 | 5,000 | 4,950 | 5,000 | 4,950 |
| Kandahar | One-year female sheep, live | 4,000 | 4,000 | 4,000 | 4,000 | 4,000 | 4,000 | 4,000 | 4,000 | 4,000 | 4,000 | 4,000 | 4,000 |
| Jalalabad | One-year female sheep, live | 3,866 | 3,800 | 3,800 | 3,800 | 3,800 | 3,800 | 3,800 | 3,800 | 3,766 | 3,766 | 3,766 | 3,766 |
| Heart | One-year female sheep, live | 3,600 | 3,600 | 3,550 | 3,550 | 3,550 | 3,600 | 3,500 | 3,600 | 3,550 | 3,600 | 3,500 | 3,500 |
| Mazar | One-year female sheep, live | 3,500 | 3,700 | 3,500 | 3,400 | 3,500 | 3,500 | 3,550 | 3,500 | 3,750 | 3,800 | 3,850 | 3,850 |
| Faizabad | One-year female sheep, live | 5,000 | 4,800 | 4,800 | 4,800 | 4,800 | 4,800 | 4,800 | 4,800 | 4,800 | 4,800 | 4,800 | 4,800 |
| Bamyan | One-year female sheep, live | 4,000 | 4,000 | 3,700 | 3,700 | 3,713 | 3,713 | 3,713 | 3,713 | 3,713 | 3,713 | 3,713 | 3,713 |
| Maimana | One-year female sheep, live | 3,000 | 4,000 | 4,000 | 3,600 | 3,500 | 3,600 | 3,600 | 3,500 | 3,500 | 4,250 | 4,200 | 4,400 |
| Kabul | Casual labour/day | 175.0 | 180.0 | 180.0 | 180.0 | 180.0 | 180.0 | 180.0 | 180.0 | 200.0 | 180.0 | 180.0 | 180.0 |
| Kandahar | Casual labour/day | 150.0 | 150.0 | 150.0 | 150.0 | 150.0 | 150.0 | 150.0 | 150.0 | 150.0 | 150.0 | 150.0 | 150.0 |
| Jalalabad | Casual labour/day | 126.6 | 126.6 | 126.7 | 126.7 | 126.7 | 126.7 | 126.7 | 126.7 | 126.7 | 126.7 | 126.7 | 126.7 |
| Heart | Casual labour/day | 170.0 | 170.0 | 170.0 | 170.0 | 170.0 | 170.0 | 170.0 | 170.0 | 170.0 | 170.0 | 170.0 | 170.0 |
| Mazar | Casual labour/day | 170.0 | 160.0 | 150.0 | 160.0 | 150.0 | 140.0 | 130.0 | 130.0 | 130.0 | 140.0 | 140.0 | 140.0 |
| Faizabad | Casual labour/day | 250.0 | 250.0 | 250.0 | 250.0 | 250.0 | 250.0 | 250.0 | 250.0 | 250.0 | 250.0 | 250.0 | 250.0 |
| Bamyan | Casual labour/day | 200.0 | 200.0 | 200.0 | 185.0 | 180.0 | 200.0 | 200.0 | 188.0 | 200.0 | 200.0 | 200.0 | 200.0 |
| Maimana | Casual labour/day | 250.0 | 240.0 | 220.0 | 220.0 | 220.0 | 180.0 | 200.0 | 200.0 | 200.0 | 200.0 | 200.0 | 200.0 |

Annex IV
Retail market prices of selected agricultural commodities in 2005

قیمت های امتهه زراعتی مارکیت های ولایات

(Source: FAAHM, MAAHF)

1. Wheat, local

| SN | Region | Province | Jan | Feb | Mar | Apr | May | Jun | Jul | Aug | Sep | Oct | Nov | Dec | ولایت | منطقه | نمبر |
|----|--------------|------------|-----|-----|-----|-----|-----|-----|-----|-----|-----|-----|-----|-----|---------|-----------|------|
| 1 | North | Faryab | 12 | 12 | 10 | 10 | 11 | 11 | 11 | 12 | 13 | 13 | 13 | 12 | فاریاب | شمال | 1 |
| 2 | North | Juzjan | 8 | 9 | 10 | 10 | 10 | 10 | 10 | 15 | 11 | 11 | 11 | 11 | جوزجان | شمال | 2 |
| 3 | North | Sar-i-Pul | 6 | 7 | 8 | 9 | 9 | 9 | 9 | 10 | 11 | 11 | 11 | 11 | سر پل | شمال | 3 |
| 4 | North | Balkh | 10 | 11 | 10 | 9 | 9 | 9 | 9 | 9 | 9 | 11 | 10 | 10 | بلخ | شمال | 4 |
| 5 | North | Samangan | 9 | 9 | 8 | 7 | 7 | 6 | 6 | 9 | 10 | 10 | 9 | 10 | سمنگان | شمال | 5 |
| 6 | North-East | Bughlan | 11 | 10 | 10 | 7 | 7 | 7 | 8 | 10 | 10 | 10 | 10 | 9 | بغلان | شمال شرق | 6 |
| 7 | North-East | Kunduz | 9 | 9 | 10 | 10 | 10 | 9 | 8 | 15 | 11 | 9 | 10 | 10 | کندز | شمال شرق | 7 |
| 8 | North-East | Takhar | 10 | 10 | 10 | 10 | 10 | 10 | 10 | 10 | 11 | 9 | 10 | 10 | تخار | شمال شرق | 8 |
| 9 | North-East | Badakhshan | 9 | 10 | 10 | | | | | | 13 | | 12 | 10 | بدخشان | شمال شرق | 9 |
| 10 | West | Hirat | 10 | 11 | 11 | 11 | 11 | 11 | 11 | 11 | 10 | 10 | 10 | 10 | هرات | غرب | 10 |
| 11 | West | Farah | 11 | 12 | 12 | 12 | 12 | 12 | 12 | 12 | 10 | 11 | 11 | 11 | فراه | غرب | 11 |
| 12 | West | Badghis | 8 | 8 | 9 | | | | | 12 | 11 | 10 | 11 | 11 | بادغیس | غرب | 12 |
| 13 | West-Central | Ghor | 7 | 9 | 10 | | | | | 12 | 8 | 12 | 13 | 13 | غور | غرب مرکزی | 13 |
| 14 | West-Central | Bamyan | 9 | 9 | 10 | 10 | 10 | 10 | 10 | 10 | 11 | 9 | 11 | 11 | بامیان | غرب مرکزی | 14 |
| 15 | Central | Kabul | 10 | 11 | 11 | 11 | 11 | 12 | 12 | 12 | 11 | 11 | 11 | 11 | کابل | مرکزی | 15 |
| 16 | Central | Parwan | 11 | 11 | 12 | 10 | 11 | 9 | 9 | 12 | 12 | | 11 | 11 | پروان | مرکزی | 16 |
| 17 | Central | Kapisa | 13 | 13 | 13 | 13 | 13 | 13 | 14 | 12 | 12 | 11 | 11 | 13 | کاپیسا | مرکزی | 17 |
| 18 | Central | Logar | 11 | 11 | 11 | 11 | 11 | 11 | 12 | 12 | 12 | 12 | 13 | 13 | لوگر | مرکزی | 18 |
| 19 | Central | Wardak | 10 | 10 | 11 | 11 | 12 | 13 | 13 | 10 | 12 | 11 | 13 | 13 | وردک | مرکزی | 19 |
| 20 | South | Paktya | 14 | 14 | 14 | 14 | 14 | 14 | 15 | 12 | 11 | 10 | 10 | 11 | پکتیا | جنوب | 20 |
| 21 | South | Paktika | 14 | 15 | 15 | | | | | | | | 10 | 11 | پکتیکا | جنوب | 21 |
| 22 | South | Khost | 11 | 11 | 11 | 12 | 12 | 10 | 10 | 9 | 10 | 10 | 10 | 11 | خوست | جنوب | 22 |
| 23 | South | Ghazni | 12 | 12 | 13 | 16 | 16 | 11 | 11 | 10 | 14 | 14 | 15 | 15 | غزنی | جنوب | 23 |
| 24 | East | Nangarhar | 10 | 11 | 12 | 12 | 11 | 7 | 10 | 9 | 12 | 12 | 11 | 11 | ننگرهار | شرق | 24 |
| 25 | East | Laghman | 15 | 14 | 13 | 12 | 12 | 11 | 11 | 11 | 11 | 11 | 13 | 13 | لغمان | شرق | 25 |
| 26 | East | Kunarha | 11 | 11 | 12 | 11 | 11 | 10 | 10 | 10 | 10 | 10 | 11 | 11 | کنرها | شرق | 26 |
| 27 | East | Nooristan | 20 | 20 | 20 | 18 | 18 | 15 | 15 | | | | | | نورستان | شرق | 27 |
| 28 | South-West | Kandahar | 11 | 12 | 13 | 13 | 14 | 12 | 12 | 12 | 11 | 11 | 12 | 10 | کندهار | جنوب غرب | 28 |
| 29 | South-West | Helmand | 10 | 10 | 10 | 8 | 8 | 6 | 7 | 11 | 10 | 11 | 11 | 12 | هلمند | جنوب غرب | 29 |
| 30 | South-West | Zabul | | 20 | 20 | 15 | 15 | 14 | 15 | 13 | 11 | 11 | 12 | 10 | زابل | جنوب غرب | 30 |
| 31 | South-West | Nimroz | 15 | 14 | 13 | 12 | 12 | 9 | 9 | 9 | 10 | | 9 | 9 | نیمروز | جنوب غرب | 31 |
| 32 | South-West | Uruzgan | 21 | 21 | 20 | | | | | | | | | 10 | اروزگان | جنوب غرب | 32 |

Annex IV
Retail market prices of selected agricultural commodities in 2005

قیمت های امتعه زراعتی مارکیت های ولایات

(Source: FAAHM, MAAHF)

2. Wheat Imported, best quality (Afs/Kg)

گندم وارداتی با کیفیت عالی

| SN | Region | Province | Jan | Feb | Mar | Apr | May | Jun | Jul | Aug | Sep | Oct | Nov | Dec | ولایت | منطقه | نمبر |
|----|---------|------------|-----|-----|-----|-----|-----|-----|-----|-----|-----|-----|-----|-----|---------|-----------|------|
| 1 | North | Faryab | 14 | 14 | 14 | 13 | 12 | 11 | 11 | 13 | 12 | | 13 | | فاریاب | شمال | 1 |
| 2 | North | Juzjan | | | | | | | | 10 | 10 | 10 | 10 | 16 | جوزجان | شمال | 2 |
| 3 | North | Sar-i-Pul | | | | | | 11 | 11 | 10 | 10 | 10 | 13 | 11 | سر پل | شمال | 3 |
| 4 | North | Balkh | 9 | 9 | 9 | 9 | 9 | 9 | 9 | 10 | 8 | 15 | 9 | 9 | بلخ | شمال | 4 |
| 5 | North | Samangan | | | | | | 8 | 8 | 10 | | | | | سمنگان | شمال | 5 |
| 6 | North- | Bughlan | 12 | 12 | 13 | 10 | 9 | 8 | 8 | 9 | 10 | | | | بغلان | شمال شرق | 6 |
| 7 | North- | Kunduz | | | | | | 10 | 9 | 10 | 10 | 9 | | | کندز | شمال شرق | 7 |
| 8 | North- | Takhar | | | | | | | | | 11 | | | | تخار | شمال شرق | 8 |
| 9 | North- | Badakhshan | 10 | 11 | 11 | | | | | | | | | 14 | بدخشان | شمال شرق | 9 |
| 10 | West | Hirat | 9 | 10 | 10 | 10 | 10 | 10 | 10 | 10 | | | | | هرات | غرب | 10 |
| 11 | West | Farah | | | | | | | | | | | | | فراه | غرب | 11 |
| 12 | West | Badghis | | | | | | | | 15 | 11 | | 12 | 13 | بادغیس | غرب | 12 |
| 13 | West- | Ghor | | | | | | | | | | | | | غور | غرب مرکزی | 13 |
| 14 | West- | Bamyan | 12 | 12 | 13 | 12 | 11 | 11 | 11 | 14 | 12 | 11 | 12 | 15 | بامیان | غرب مرکزی | 14 |
| 15 | Central | Kabul | 13 | 13 | 14 | 12 | 11 | 11 | 11 | 15 | 14 | | | | کابل | مرکزی | 15 |
| 16 | Central | Parwan | 13 | 13 | 13 | 12 | 11 | 10 | 10 | 10 | 12 | | 9 | 9 | پروان | مرکزی | 16 |
| 17 | Central | Kapisa | 11 | 11 | 11 | | | | | 12 | 12 | 12 | 11 | 13 | کاپیسا | مرکزی | 17 |
| 18 | Central | Logar | 10 | 10 | 10 | 10 | 11 | 11 | 11 | 12 | 13 | 11 | 12 | 12 | لوگر | مرکزی | 18 |
| 19 | Central | Wardak | 10 | 10 | 11 | 11 | 11 | 11 | 11 | 12 | 11 | 10 | 13 | 13 | وردک | مرکزی | 19 |
| 20 | South | Paktya | | | | | | | | 14 | 13 | 12 | | 12 | پکتیا | جنوب | 20 |
| 21 | South | Paktika | 13 | 14 | 14 | | | | | | | | | | پکتیکا | جنوب | 21 |
| 22 | South | Khost | | | | | | | | 10 | 10 | | | | خوست | جنوب | 22 |
| 23 | South | Ghazni | 15 | 15 | 15 | 13 | 13 | 9 | 9 | 9 | | 13 | 13 | 13 | غزنی | جنوب | 23 |
| 24 | East | Nangarhar | 12 | 12 | 12 | 11 | 10 | 10 | 11 | 10 | | | | | ننگرهار | شرق | 24 |
| 25 | East | Laghman | 15 | 14 | 13 | | | | | | | 11 | 13 | 17 | لغمان | شرق | 25 |
| 26 | East | Kunarha | 11 | 11 | 12 | 10 | 10 | 9 | 9 | 9 | 9 | 11 | 12 | 12 | کنرها | شرق | 26 |
| 27 | East | Nooristan | 11 | 11 | 12 | 10 | 10 | 11 | 11 | | | | | | نورستان | شرق | 27 |
| 28 | South- | Kandahar | 11 | 12 | 13 | | | | | | | | | | کندهار | جنوب غرب | 28 |
| 29 | South- | Helmand | | | | | | 9 | 9 | | 10 | | | | هلمند | جنوب غرب | 29 |
| 30 | South- | Zabul | | | | 14 | 14 | 20 | 21 | | | | | | زابل | جنوب غرب | 30 |
| 31 | South- | Nimroz | 16 | 15 | 15 | 12 | 12 | 9 | 9 | | | | | | نیمروز | جنوب غرب | 31 |
| 32 | South- | Uruzgan | | | | | | | | | | | | | اروزگان | جنوب غرب | 32 |

Annex IV
Retail market prices of selected agricultural commodities in 2005

قیمت های امتهه زراعتی مارکیت های ولایات

(Source: FAAHM, MAAHF)

3. Wheat Flour, best quality (Afs/Kg)

کندم وارداتی با کیفیت عالی

| SN | Region | Province | Jan | Feb | Mar | Apr | May | Jun | Jul | Aug | Sep | Oct | Nov | Dec | ولایت | منطقه | نمبر |
|----|---------|------------|-----|-----|-----|-----|-----|-----|-----|-----|-----|-----|-----|-----|---------|-----------|------|
| 1 | North | Faryab | 13 | 13 | 13 | 13 | 13 | 15 | 15 | 15 | 16 | 16 | 16 | 16 | فاریاب | شمال | 1 |
| 2 | North | Juzjan | 10 | 11 | 11 | 12 | 12 | 14 | 14 | 14 | 14 | 13 | 14 | 12 | جوزجان | شمال | 2 |
| 3 | North | Sar-i-Pul | 9 | 10 | 11 | 11 | 11 | 15 | 15 | 11 | 14 | 13 | 15 | 13 | سر پل | شمال | 3 |
| 4 | North | Balkh | 15 | 14 | 15 | 14 | 14 | 15 | 15 | 15 | 10 | 13 | 12 | 13 | بلخ | شمال | 4 |
| 5 | North | Samangan | 12 | 12 | 12 | 13 | 13 | 15 | 15 | 12 | 14 | 14 | 14 | 11 | سمنگان | شمال | 5 |
| 6 | North- | Bughlan | 12 | 12 | 13 | 11 | 11 | 14 | 14 | 15 | 19 | 16 | 15 | 14 | بغلان | شمال شرق | 6 |
| 7 | North- | Kunduz | 13 | 14 | 14 | 14 | 14 | 14 | 14 | 15 | 19 | 11 | 17 | 12 | کندز | شمال شرق | 7 |
| 8 | North- | Takhar | 13 | 13 | 13 | 12 | 12 | 11 | 11 | | 11 | 11 | 17 | 13 | تخار | شمال شرق | 8 |
| 9 | North- | Badakhshan | 19 | 14 | 15 | | | | 15 | | 11 | | 17 | 21 | بدخشان | شمال شرق | 9 |
| 10 | West | Hirat | 13 | 14 | 15 | 15 | 15 | 15 | 15 | 14 | 13 | 13 | 15 | 15 | هرات | غرب | 10 |
| 11 | West | Farah | 15 | 16 | 16 | | | | | 16 | 11 | 14 | | 12 | فراه | غرب | 11 |
| 12 | West | Badghis | 10 | 10 | 11 | | | | | 16 | 17 | 15 | 17 | 13 | بادغیس | غرب | 12 |
| 13 | West- | Ghor | 9 | 10 | 11 | | | | | 17 | 12 | 10 | 14 | 14 | غور | غرب مرکزی | 13 |
| 14 | West- | Bamyan | 15 | 15 | 15 | 15 | 15 | 15 | 15 | 15 | 16 | 16 | 16 | 15 | بامیان | غرب مرکزی | 14 |
| 15 | Central | Kabul | 15 | 15 | 16 | 15 | 16 | 17 | 17 | 15 | 15 | 15 | 16 | | کابل | مرکزی | 15 |
| 16 | Central | Parwan | 15 | 15 | 15 | 16 | 16 | 15 | 15 | 14 | 15 | 14 | 15 | 13 | پروان | مرکزی | 16 |
| 17 | Central | Kapisa | 14 | 15 | 16 | 16 | 15 | 14 | 14 | 14 | 14 | 13 | 15 | 14 | کاپیسا | مرکزی | 17 |
| 18 | Central | Logar | 15 | 15 | 15 | 15 | 15 | 14 | 14 | 14 | 14 | 14 | 14 | 14 | لوگر | مرکزی | 18 |
| 19 | Central | Wardak | 15 | 15 | 15 | 15 | 15 | 14 | 15 | 14 | 16 | 13 | 15 | 14 | وردک | مرکزی | 19 |
| 20 | South | Paktya | 14 | 14 | 14 | 14 | 14 | 14 | 15 | 17 | 14 | 13 | 17 | 13 | پکتیا | جنوب | 20 |
| 21 | South | Paktika | 15 | 15 | 16 | | | | | | | | 17 | | پکتیکا | جنوب | 21 |
| 22 | South | Khost | 13 | 13 | 13 | 20 | 20 | 14 | 14 | 14 | 14 | 14 | 14 | 13 | خوست | جنوب | 22 |
| 23 | South | Ghazni | 16 | 16 | 17 | 15 | 15 | 14 | 14 | 15 | 15 | 14 | 15 | | غزنی | جنوب | 23 |
| 24 | East | Nangarhar | 14 | 13 | 14 | 16 | 14 | 13 | 13 | 14 | 18 | 16 | 14 | | ننگرهار | شرق | 24 |
| 25 | East | Laghman | 15 | 14 | 14 | | | | | 14 | 16 | 14 | 17 | 14 | لغمان | شرق | 25 |
| 26 | East | Kunarha | 18 | 18 | 19 | 15 | 15 | 12 | 12 | 12 | 14 | 13 | 17 | 14 | کنرها | شرق | 26 |
| 27 | East | Nooristan | 14 | 14 | 14 | 13 | 13 | 13 | 13 | 12 | 14 | | | | نورستان | شرق | 27 |
| 28 | South- | Kandahar | 12 | 13 | 14 | 15 | 15 | 13 | 13 | 15 | 12 | 12 | | | کندهار | جنوب غرب | 28 |
| 29 | South- | Helmand | 17 | 17 | 17 | 14 | 14 | 9 | 10 | 15 | 14 | 12 | | 13 | هلمند | جنوب غرب | 29 |
| 30 | South- | Zabul | 60 | 25 | 25 | 15 | 15 | 13 | 14 | 14 | 14 | 15 | 14 | 15 | زابل | جنوب غرب | 30 |
| 31 | South- | Nimroz | 17 | 16 | 15 | 15 | 16 | 16 | 16 | 15 | 15 | 15 | | 9 | نیمروز | جنوب غرب | 31 |
| 32 | South- | Uruzgan | 28 | 28 | 25 | | | | | | | | | 13 | اروزگان | جنوب غرب | 32 |

Annex IV
Retail market prices of selected agricultural commodities in 2005

قیمت های امتهه زراعتی مارکیت های ولایات

(Source: FAAHM, MAAHF)

4. Beef (Afs/Kg)

گوشت گا و یک کیلو گرام به افغانی

| SN | Region | Province | Jan | Feb | Mar | Apr | May | Jun | Jul | Aug | Sep | Oct | Nov | Dec | ولایت | منطقه | نمبر |
|----|---------|------------|-----|-----|-----|-----|-----|-----|-----|-----|-----|-----|-----|-----|---------|-----------|------|
| 1 | North | Faryab | 120 | 140 | 130 | 130 | 130 | 120 | 120 | 120 | 120 | 130 | 130 | 130 | فاریاب | شمال | 1 |
| 2 | North | Juzjan | 110 | 120 | 140 | 130 | 130 | 130 | 130 | 130 | 140 | 140 | 140 | 140 | جوزجان | شمال | 2 |
| 3 | North | Sar-i-Pul | 120 | 120 | 140 | | | 120 | 120 | 120 | 120 | 130 | 130 | 130 | سر پل | شمال | 3 |
| 4 | North | Balkh | 140 | 145 | 150 | 150 | 150 | 150 | 150 | 140 | 130 | 120 | 150 | 150 | بلخ | شمال | 4 |
| 5 | North | Samangan | 120 | 140 | 150 | | | | | 130 | 120 | 125 | 140 | 135 | سمنگان | شمال | 5 |
| 6 | North- | Bughlan | 90 | 100 | 100 | 120 | 150 | | | 150 | 120 | 120 | 120 | 120 | بغلان | شمال شرق | 6 |
| 7 | North- | Kunduz | 100 | 120 | 120 | 120 | 120 | 120 | 120 | 115 | 140 | 140 | 140 | 120 | کندز | شمال شرق | 7 |
| 8 | North- | Takhar | 100 | 100 | 100 | 110 | 110 | 120 | 120 | 115 | 110 | 100 | 100 | 100 | تخار | شمال شرق | 8 |
| 9 | North- | Badakhshan | 100 | 120 | 140 | | | | 150 | | | | 120 | 120 | بدخشان | شمال شرق | 9 |
| 10 | West | Hirat | 120 | 130 | 140 | 130 | 130 | 130 | 130 | 120 | 120 | 140 | 180 | 130 | هرات | غرب | 10 |
| 11 | West | Farah | 120 | 130 | 130 | | | | | 120 | 120 | 120 | 130 | 130 | فراه | غرب | 11 |
| 12 | West | Badghis | 90 | 100 | 140 | | | | | 100 | 100 | 100 | 120 | 120 | بادغیس | غرب | 12 |
| 13 | West- | Ghor | 100 | 110 | 120 | | | | | 120 | 120 | 120 | 120 | 130 | غور | غرب مرکزی | 13 |
| 14 | West- | Bamyan | 100 | 100 | 100 | 110 | 110 | 120 | 120 | 120 | 120 | 120 | 120 | 120 | بامیان | غرب مرکزی | 14 |
| 15 | Central | Kabul | 120 | 130 | 130 | 130 | 130 | 140 | 140 | 120 | 120 | 130 | 130 | 130 | کابل | مرکزی | 15 |
| 16 | Central | Parwan | 110 | 110 | 110 | 120 | 120 | 120 | 120 | 120 | | | 120 | 130 | پروان | مرکزی | 16 |
| 17 | Central | Kapisa | 120 | 120 | 120 | | | | | 120 | 120 | 140 | 140 | 140 | کاپیسا | مرکزی | 17 |
| 18 | Central | Logar | 120 | 120 | 120 | 120 | 120 | 130 | 130 | 120 | 120 | 120 | 120 | 120 | لوگر | مرکزی | 18 |
| 19 | Central | Wardak | 110 | 110 | 110 | 120 | 120 | 125 | 125 | 130 | 130 | 120 | 130 | 130 | وردک | مرکزی | 19 |
| 20 | South | Paktya | 110 | 120 | 120 | | | | | 120 | 120 | 110 | 140 | 110 | پکتیا | جنوب | 20 |
| 21 | South | Paktika | 110 | 110 | 120 | | | | | | | | 140 | 145 | پکتیکا | جنوب | 21 |
| 22 | South | Khost | 95 | 95 | 95 | 100 | 100 | 110 | 110 | 100 | 100 | 100 | 100 | 100 | خوست | جنوب | 22 |
| 23 | South | Ghazni | 118 | 119 | 120 | 120 | 120 | 115 | 115 | 130 | 100 | 130 | 130 | 130 | غزنی | جنوب | 23 |
| 24 | East | Nangarhar | 110 | 110 | 110 | 100 | 110 | 120 | 120 | 120 | 110 | 95 | 120 | 120 | ننگرهار | شرق | 24 |
| 25 | East | Laghman | 120 | 120 | 120 | | | | | | | 110 | 110 | 110 | لغمان | شرق | 25 |
| 26 | East | Kunarha | 100 | 100 | 100 | 100 | 100 | 100 | 100 | 100 | 110 | 100 | 120 | 120 | کنرها | شرق | 26 |
| 27 | East | Nooristan | 180 | 180 | 180 | 150 | 150 | 120 | 120 | | | | | | نورستان | شرق | 27 |
| 28 | South- | Kandahar | 120 | 120 | 120 | 130 | 130 | | | 115 | 140 | 140 | 120 | 120 | کندهار | جنوب غرب | 28 |
| 29 | South- | Helmand | 120 | 120 | 120 | | | | | 115 | 118 | 120 | 120 | 120 | هلمند | جنوب غرب | 29 |
| 30 | South- | Zabul | 125 | 125 | 125 | 100 | 100 | | | 130 | 110 | 120 | 130 | 130 | زابل | جنوب غرب | 30 |
| 31 | South- | Nimroz | 140 | 140 | 130 | 130 | 130 | 130 | 130 | | | | 142 | 140 | نیمروز | جنوب غرب | 31 |
| 32 | South- | Uruzgan | 120 | 120 | 120 | | | | | | | | | 130 | اروزگان | جنوب غرب | 32 |

Annex IV
Retail market prices of selected agricultural commodities in 2005

قیمت های امتعه زراعتی مارکیت های ولایات

(Source: FAAHM, MAAHF)

5. Mutton/Lamb (Afs/Kg)

گوشت گوسفند کیلو گرام / افغانی

| SN | Region | Province | Jan | Feb | Mar | Apr | May | Jun | Jul | Aug | Sep | Oct | Nov | Dec | ولایت | منطقه | نمبر |
|----|------------|------------|-----|-----|-----|-----|-----|-----|-----|-----|-----|-----|-----|-----|---------|-----------|------|
| 1 | North | Faryab | 150 | 160 | 180 | 160 | 160 | 150 | 150 | 150 | 150 | 160 | 160 | 160 | فاریاب | شمال | 1 |
| 2 | North | Juzjan | 120 | 130 | 160 | 160 | 160 | 160 | 160 | 160 | 160 | 160 | 160 | 160 | جوزجان | شمال | 2 |
| 3 | North | Sar-i-Pul | 150 | 160 | 180 | | | 150 | 150 | 150 | 150 | 150 | 150 | 150 | سر پل | شمال | 3 |
| 4 | North | Balkh | 170 | 175 | 180 | 160 | 160 | 160 | 170 | 170 | 160 | 160 | 180 | 180 | بلخ | شمال | 4 |
| 5 | North | Samangan | 160 | 170 | 180 | | | | | 160 | 140 | 140 | 150 | 150 | سمنگان | شمال | 5 |
| 6 | North-East | Bughlan | 140 | 150 | 150 | 180 | 180 | | | 180 | 150 | 150 | 140 | 140 | بغلان | شمال شرق | 6 |
| 7 | North-East | Kunduz | 140 | 150 | 160 | 160 | 160 | | | 225 | 160 | 160 | 160 | 160 | کندز | شمال شرق | 7 |
| 8 | North-East | Takhar | 140 | 140 | 160 | 150 | 150 | 140 | 140 | | 150 | 140 | 140 | 140 | تخار | شمال شرق | 8 |
| 9 | North-East | Badakhshan | 120 | 150 | 170 | | | | 180 | | | | | 104 | بدخشان | شمال شرق | 9 |
| 10 | West | Hirat | 190 | 200 | 200 | 180 | 180 | 170 | 170 | 180 | 160 | 180 | 200 | 180 | هرات | غرب | 10 |
| 11 | West | Farah | 180 | 190 | 200 | | | | | 170 | 165 | 160 | 180 | 180 | فراه | غرب | 11 |
| 12 | West | Badghis | 160 | 170 | 200 | | | | | 170 | 130 | 135 | 150 | 150 | بادغیس | غرب | 12 |
| 13 | West- | Ghor | 120 | 130 | 140 | | | | | 140 | 140 | 140 | 140 | 150 | غور | غرب مرکزی | 13 |
| 14 | West- | Bamyan | 170 | 170 | 170 | 160 | 160 | 160 | 160 | 160 | 160 | 160 | 160 | 160 | بامیان | غرب مرکزی | 14 |
| 15 | Central | Kabul | 160 | 160 | 160 | 175 | 175 | 180 | 180 | 180 | 180 | 175 | 180 | 180 | کابل | مرکزی | 15 |
| 16 | Central | Parwan | 200 | 180 | 180 | 180 | 180 | 160 | 160 | 160 | | | 180 | 180 | پروان | مرکزی | 16 |
| 17 | Central | Kapisa | 160 | 150 | 140 | | | | | 180 | 160 | 160 | 170 | 180 | کاپیسا | مرکزی | 17 |
| 18 | Central | Logar | 170 | 170 | 170 | 160 | 160 | 150 | 150 | 170 | 160 | 160 | 150 | 150 | لوگر | مرکزی | 18 |
| 19 | Central | Wardak | 180 | 200 | 200 | 180 | 180 | 200 | 200 | 185 | 160 | 160 | 170 | 180 | وردک | مرکزی | 19 |
| 20 | South | Paktya | 170 | 165 | 165 | | | | | 180 | 180 | 140 | 160 | 165 | پکتیا | جنوب | 20 |
| 21 | South | Paktika | 160 | 150 | 150 | | | | | | | | 160 | 159 | پکتیکا | جنوب | 21 |
| 22 | South | Khost | 135 | 135 | 130 | 140 | 140 | 160 | 160 | 150 | 140 | 140 | 150 | 150 | خوست | جنوب | 22 |
| 23 | South | Ghazni | 150 | 160 | 160 | 200 | 200 | 155 | 155 | 170 | 130 | 180 | 180 | 180 | غزنی | جنوب | 23 |
| 24 | East | Nangarhar | 140 | 140 | 140 | 150 | 150 | 150 | 180 | 180 | 140 | 150 | 200 | 180 | ننگرهار | شرق | 24 |
| 25 | East | Laghman | 150 | 150 | 150 | | | | | | 150 | 150 | 180 | 130 | لغمان | شرق | 25 |
| 26 | East | Kunarha | 150 | 150 | 150 | 150 | 150 | 160 | 160 | 140 | 170 | 150 | 160 | 160 | کنرھا | شرق | 26 |
| 27 | East | Nooristan | 200 | 200 | 200 | 170 | 170 | 150 | 150 | | | | | | نورستان | شرق | 27 |
| 28 | South- | Kandahar | 177 | 177 | 185 | 200 | 200 | | | 215 | 188 | 188 | 205 | 200 | کندهار | جنوب غرب | 28 |
| 29 | South- | Helmand | 180 | 180 | 180 | 165 | 165 | | | 150 | 170 | 150 | 180 | 180 | هلمند | جنوب غرب | 29 |
| 30 | South- | Zabul | 175 | 175 | 175 | 220 | 220 | | | 170 | 180 | 180 | 190 | 180 | زابل | جنوب غرب | 30 |
| 31 | South- | Nimroz | 195 | 190 | 185 | 170 | 170 | 170 | 170 | | | | 166 | 165 | نیمروز | جنوب غرب | 31 |
| 32 | South- | Uruzgan | 200 | 200 | 222 | | | | | | | | | 170 | اروزگان | جنوب غرب | 32 |

Annex IV
Retail market prices of selected agricultural commodities in 2005

قیمت های امتهه زراعتی مارکیت های ولایات

(Source: FAAHM, MAAHF)

6. Chicken (Afs/Kg)

گوشت مرغ کیلو گرام / افغانی

| SN | Region | Province | Jan | Feb | Mar | Apr | May | Jun | Jul | Aug | Sep | Oct | Nov | Dec | ولایت | منطقه | نمبر |
|----|------------|------------|-----|-----|-----|-----|-----|-----|-----|-----|-----|-----|-----|-----|---------|-----------|------|
| 1 | North | Faryab | 70 | 70 | 90 | 80 | 80 | 75 | 75 | Aug | 75 | 80 | 90 | 80 | فاریاب | شمال | 1 |
| 2 | North | Juzjan | 80 | 80 | 80 | 80 | 80 | 80 | 80 | 80 | 80 | 80 | 80 | 80 | جوزجان | شمال | 2 |
| 3 | North | Sar-i-Pul | 70 | 75 | 80 | | | 85 | 85 | 80 | 75 | 80 | 80 | 80 | سر پل | شمال | 3 |
| 4 | North | Balkh | 65 | 70 | 80 | 85 | 80 | 80 | 85 | 90 | 90 | 90 | 90 | 90 | بلخ | شمال | 4 |
| 5 | North | Samangan | 75 | 80 | 80 | | | | | 85 | 80 | 80 | 85 | 80 | سمنگان | شمال | 5 |
| 6 | North-East | Bughlan | 60 | 70 | 90 | 90 | 90 | | | 85 | 80 | 95 | 90 | 90 | بغلان | شمال شرق | 6 |
| 7 | North-East | Kunduz | 70 | 80 | 90 | 90 | 90 | | | | 90 | 90 | 75 | 75 | کندز | شمال شرق | 7 |
| 8 | North-East | Takhar | 70 | 70 | 90 | 90 | 90 | 90 | 90 | | 75 | 75 | 80 | 80 | تخار | شمال شرق | 8 |
| 9 | North-East | Badakhshan | 80 | 90 | 90 | | | | | | | | 120 | 100 | بدخشان | شمال شرق | 9 |
| 10 | West | Hirat | 70 | 70 | 80 | | | | | | 75 | 75 | 80 | 65 | هرات | غرب | 10 |
| 11 | West | Farah | 80 | 90 | 100 | | | | | | 80 | 80 | 80 | 70 | فراه | غرب | 11 |
| 12 | West | Badghis | 65 | 70 | 70 | | | | | | 75 | 80 | 85 | 60 | بادغیس | غرب | 12 |
| 13 | West- | Ghor | 70 | 70 | 80 | | | | | | | 80 | 70 | | غور | غرب مرکزی | 13 |
| 14 | West- | Bamyan | 130 | 130 | 130 | 120 | 120 | 110 | 110 | 90 | 110 | 105 | 110 | 105 | بامیان | غرب مرکزی | 14 |
| 15 | Central | Kabul | 70 | 70 | 85 | 85 | 85 | 80 | 90 | 75 | 90 | 95 | 90 | 80 | کابل | مرکزی | 15 |
| 16 | Central | Parwan | 70 | 65 | 60 | 75 | 75 | 75 | 75 | 75 | | | 90 | 85 | پروان | مرکزی | 16 |
| 17 | Central | Kapisa | 80 | 75 | 75 | | | | | | 60 | 90 | 80 | 70 | کاپیسا | مرکزی | 17 |
| 18 | Central | Logar | 80 | 80 | 90 | 90 | 90 | 85 | 85 | 90 | 90 | 90 | 100 | 85 | لوگر | مرکزی | 18 |
| 19 | Central | Wardak | 70 | 70 | 70 | 75 | 75 | 80 | 80 | 80 | 75 | 90 | 80 | 100 | وردک | مرکزی | 19 |
| 20 | South | Paktya | 90 | 90 | 90 | | | | | | 75 | 70 | 75 | 80 | پکتیا | جنوب | 20 |
| 21 | South | Paktika | 90 | 90 | 90 | | | | | 85 | | | 75 | 79 | پکتیکا | جنوب | 21 |
| 22 | South | Khost | 85 | 85 | 85 | 85 | 85 | 85 | 85 | 85 | 100 | 100 | 100 | 85 | خوست | جنوب | 22 |
| 23 | South | Ghazni | 80 | 80 | 80 | 95 | 95 | 90 | 90 | 85 | 90 | 95 | 95 | 95 | غزنی | جنوب | 23 |
| 24 | East | Nangarhar | 85 | 85 | 85 | 85 | 85 | 85 | 80 | 85 | 100 | 85 | 80 | 80 | ننگرهار | شرق | 24 |
| 25 | East | Laghman | 70 | 70 | 70 | | | | | | 90 | 90 | 90 | 100 | لغمان | شرق | 25 |
| 26 | East | Kunarha | 80 | 80 | 80 | 100 | 100 | 120 | 120 | 80 | 80 | 100 | 100 | 100 | کنرها | شرق | 26 |
| 27 | East | Nooristan | 100 | 100 | 100 | 90 | 90 | 90 | 90 | | | | | | نورستان | شرق | 27 |
| 28 | South-West | Kandahar | 70 | 70 | 70 | 70 | 70 | | | 85 | 75 | 75 | 80 | 80 | کندهار | جنوب غرب | 28 |
| 29 | South-West | Helmand | 70 | 70 | 70 | 70 | 70 | | | 85 | 75 | 105 | 80 | 80 | هلمند | جنوب غرب | 29 |
| 30 | South-West | Zabul | 70 | 70 | 70 | 85 | 85 | | | 85 | 80 | 90 | 87 | 80 | زابل | جنوب غرب | 30 |
| 31 | South-West | Nimroz | 75 | 70 | 70 | 70 | 70 | 70 | 70 | | | | 75 | 75 | نیمروز | جنوب غرب | 31 |
| 32 | South-West | Uruzgan | 85 | 85 | 85 | | | | | | | | | 85 | اروزگان | جنوب غرب | 32 |

Annex IV
Retail market prices of selected agricultural commodities in 2005

قیمت های امتعه زراعتی مارکیت های ولایات

(Source: FAAHM, MAAHF)

7. Rice Local (Afs/Kg)

برنج محلی کیلو گرام /افغانی

| SN | Region | Province | Jan | Feb | Mar | Apr | May | Jun | Jul | Aug | Sep | Oct | Nov | Dec | ولایت | منطقه | نمبر |
|----|--------------|------------|-----|-----|-----|-----|-----|-----|-----|-----|-----|-----|-----|-----|---------|-----------|------|
| 1 | North | Faryab | 25 | 25 | 25 | 25 | 25 | 26 | 26 | 32 | 32 | 30 | 30 | 28 | فاریاب | شمال | 1 |
| 2 | North | Juzjan | 17 | 20 | 23 | 25 | 25 | 28 | 28 | 28 | 31 | 31 | 31 | 31 | جوزجان | شمال | 2 |
| 3 | North | Sar-i-Pul | 23 | 23 | 23 | | | 23 | 23 | 31 | 26 | 25 | 25 | 19 | سر پل | شمال | 3 |
| 4 | North | Balkh | 30 | 30 | 35 | 25 | 25 | 25 | 23 | 22 | 31 | 31 | 31 | 31 | بلخ | شمال | 4 |
| 5 | North | Samangan | 20 | 20 | 20 | | | | | 24 | 28 | 29 | 21 | 24 | سمنگان | شمال | 5 |
| 6 | North-East | Bughlan | 18 | 20 | 21 | 20 | 20 | | | 22 | 20 | 30 | 20 | 30 | بغلان | شمال شرق | 6 |
| 7 | North-East | Kunduz | 20 | 22 | 22 | 19 | 19 | | | | 31 | 30 | 31 | 19 | کندز | شمال شرق | 7 |
| 8 | North-East | Takhar | 18 | 20 | 20 | 20 | 20 | 20 | 20 | | 32 | 29 | 24 | 22 | تخار | شمال شرق | 8 |
| 9 | North-East | Badakhshan | 20 | 20 | 20 | | | | | | | | 22 | 30 | بدخشان | شمال شرق | 9 |
| 10 | West | Hirat | 24 | 25 | 25 | 25 | 25 | 20 | 19 | 28 | | 30 | 30 | 30 | هرات | غرب | 10 |
| 11 | West | Farah | | | | | | | | | | | 20 | 20 | فراه | غرب | 11 |
| 12 | West | Badghis | | | | | | | | | | | | | بادغیس | غرب | 12 |
| 13 | West-Central | Ghor | | | | | | | | | | | | | غور | غرب مرکزی | 13 |
| 14 | West-Central | Bamyan | 25 | 25 | 25 | 26 | 26 | 26 | 26 | 17 | 30 | 34 | | | بامیان | غرب مرکزی | 14 |
| 15 | Central | Kabul | 21 | 23 | 34 | | | | | 20 | 24 | 25 | 24 | 24 | کابل | مرکزی | 15 |
| 16 | Central | Parwan | 17 | 17 | 17 | 24 | 25 | 26 | 26 | | | | 20 | 22 | پروان | مرکزی | 16 |
| 17 | Central | Kapisa | 16 | 16 | 16 | | | | | 17 | 15 | 16 | 17 | 19 | کاپیسا | مرکزی | 17 |
| 18 | Central | Logar | | | | | | 25 | 25 | 31 | 32 | | | | لوگر | مرکزی | 18 |
| 19 | Central | Wardak | | | | | | | | 28 | 32 | 32 | 22 | 22 | وردک | مرکزی | 19 |
| 20 | South | Paktya | 17 | 17 | 17 | | | | | | 24 | 24 | 13 | 24 | پکتیا | جنوب | 20 |
| 21 | South | Paktika | | | | | | | | | | | 13 | 12 | پکتیکا | جنوب | 21 |
| 22 | South | Khost | | | | 20 | 20 | 20 | 20 | 20 | 20 | | 14 | 14 | خوست | جنوب | 22 |
| 23 | South | Ghazni | 25 | 25 | 25 | 23 | 23 | | | | 20 | | | | غزنی | جنوب | 23 |
| 24 | East | Nangarhar | 14 | 14 | 14 | 16 | 14 | 14 | 14 | 18 | 23 | 22 | 22 | 22 | ننگرهار | شرق | 24 |
| 25 | East | Laghman | 23 | 24 | 23 | | | | | | | 20 | 22 | 22 | لغمان | شرق | 25 |
| 26 | East | Kunarha | 25 | 25 | 25 | 30 | 30 | 30 | 30 | 30 | 30 | 30 | 30 | 30 | کنرها | شرق | 26 |
| 27 | East | Nooristan | 16 | 16 | 16 | 15 | 15 | 18 | 18 | 20 | 20 | | | | نورستان | شرق | 27 |
| 28 | South-West | Kandahar | 25 | 25 | 25 | 25 | 25 | 25 | 25 | 25 | 25 | | | | کندهار | جنوب غرب | 28 |
| 29 | South-West | Helmand | 25 | 25 | 25 | 25 | 25 | 25 | 25 | 25 | 25 | | | | هلمند | جنوب غرب | 29 |
| 30 | South-West | Zabul | 28 | 28 | 28 | 28 | 28 | 28 | 28 | 28 | 28 | | | | زابل | جنوب غرب | 30 |
| 31 | South-West | Nimroz | | | | | | | | | | | | | نیمروز | جنوب غرب | 31 |
| 32 | South-West | Uruzgan | | | | | | | | | | | | 25 | اروزگان | جنوب غرب | 32 |

Annex IV
Retail market prices of selected agricultural commodities in 2005

قیمت های امتهه زراعتی مارکیت های ولایات

(Source: FAAHM, MAAHF)

8. Rice Imported (Afs/Kg)

برنج وارداتی کیلو گرام /افغانی

| SN | Region | Province | Jan | Feb | Mar | Apr | May | Jun | Jul | Aug | Sep | Oct | Nov | Dec | ولایت | منطقه | نمبر |
|----|--------------|------------|-----|-----|-----|-----|-----|-----|-----|-----|-----|-----|-----|-----|---------|-----------|------|
| 1 | North | Faryab | 32 | 32 | 32 | 32 | 32 | 31 | 31 | 32 | 33 | 36 | 38 | 35 | فاریاب | شمال | 1 |
| 2 | North | Juzjan | 28 | 32 | 35 | 35 | 35 | 35 | 35 | 35 | 33 | 34 | 35 | 35 | جوزجان | شمال | 2 |
| 3 | North | Sar-i-Pul | 32 | 32 | 32 | | | 33 | 33 | | 33 | 35 | 36 | 35 | سر پل | شمال | 3 |
| 4 | North | Balkh | 35 | 35 | 36 | 33 | 33 | 33 | 33 | 33 | 33 | 35 | 34 | 34 | بلخ | شمال | 4 |
| 5 | North | Samangan | 32 | 35 | 35 | | | | | 31 | 32 | 32 | 33 | 32 | سمنگان | شمال | 5 |
| 6 | North-East | Bughlan | 32 | 32 | 32 | 35 | 35 | | | 35 | 23 | 35 | 34 | 34 | بغلان | شمال شرق | 6 |
| 7 | North-East | Kunduz | 32 | 32 | 32 | 30 | 30 | | | 30 | 33 | 33 | 31 | 36 | کندز | شمال شرق | 7 |
| 8 | North-East | Takhar | | | | | | | | | 35 | 31 | 28 | 30 | تخار | شمال شرق | 8 |
| 9 | North-East | Badakhshan | 33 | 33 | 33 | | | | | | | | 33 | 32 | بدخشان | شمال شرق | 9 |
| 10 | West | Hirat | 30 | 30 | 30 | | | | | 34 | 34 | 32 | 35 | 35 | هرات | غرب | 10 |
| 11 | West | Farah | 30 | 30 | 30 | | | | | 35 | | 34 | 35 | 34 | فراه | غرب | 11 |
| 12 | West | Badghis | 35 | 35 | 36 | | | | | 35 | 35 | 36 | 35 | 36 | بادغیس | غرب | 12 |
| 13 | West-Central | Ghor | 35 | 35 | 36 | | | | | 35 | 35 | 35 | 40 | 40 | غور | غرب مرکزی | 13 |
| 14 | West-Central | Bamyan | 35 | 35 | 35 | 37 | 37 | 40 | 40 | 35 | 37 | 36 | 36 | 35 | بامیان | غرب مرکزی | 14 |
| 15 | Central | Kabul | 34 | 34 | 34 | 28 | 35 | 33 | 33 | 35 | 31 | 31 | 35 | 36 | کابل | مرکزی | 15 |
| 16 | Central | Parwan | 33 | 33 | 33 | 32 | 32 | 31 | 31 | 30 | | | 35 | 36 | پروان | مرکزی | 16 |
| 17 | Central | Kapisa | 31 | 31 | 31 | | | | | 33 | 34 | 32 | 36 | 36 | کاپیسا | مرکزی | 17 |
| 18 | Central | Logar | 31 | 31 | 31 | 35 | 35 | 35 | 35 | 30 | 32 | 33 | 35 | 35 | لوگر | مرکزی | 18 |
| 19 | Central | Wardak | 30 | 30 | 30 | 31 | 31 | 32 | 32 | 35 | 35 | 34 | 35 | 35 | وردک | مرکزی | 19 |
| 20 | South | Paktya | 29 | 29 | 31 | | | | | 28 | 29 | 31 | 31 | 33 | پکتیا | جنوب | 20 |
| 21 | South | Paktika | 35 | 35 | 35 | | | | | | | | 31 | 29 | پکتیکا | جنوب | 21 |
| 22 | South | Khost | 32 | 32 | 33 | 35 | 35 | 35 | 35 | 30 | 30 | 30 | 30 | 20 | خوست | جنوب | 22 |
| 23 | South | Ghazni | 30 | 30 | 41 | 31 | 31 | | | 34 | | 31 | 34 | 34 | غزنی | جنوب | 23 |
| 24 | East | Nangarhar | 33 | 33 | 33 | 33 | 31 | 31 | 31 | 30 | 27 | 26 | 30 | 30 | ننگرهار | شرق | 24 |
| 25 | East | Laghman | 32 | 32 | 32 | | | | | | | 33 | 33 | 33 | لغمان | شرق | 25 |
| 26 | East | Kunarha | 36 | 36 | 36 | 35 | 35 | 35 | 35 | 35 | 35 | 35 | 35 | 35 | کنرها | شرق | 26 |
| 27 | East | Nooristan | 40 | 40 | 40 | 35 | 35 | 32 | 32 | | | | | | نورستان | شرق | 27 |
| 28 | South-West | Kandahar | 40 | 40 | 40 | 35 | 35 | | | 30 | 36 | 36 | 37 | 34 | کندهار | جنوب غرب | 28 |
| 29 | South-West | Helmand | 42 | 42 | 42 | 30 | 30 | | | 36 | 31 | 36 | 36 | 31 | هلمند | جنوب غرب | 29 |
| 30 | South-West | Zabul | 32 | 32 | 32 | 31 | 31 | | | 32 | 33 | 34 | 35 | 35 | زابل | جنوب غرب | 30 |
| 31 | South-West | Nimroz | 32 | 31 | 31 | 36 | 36 | 36 | 36 | | | | 34 | 35 | نیمروز | جنوب غرب | 31 |
| 32 | South-West | Uruzgan | 43 | 41 | 41 | | | | | | | | | 38 | اروزگان | جنوب غرب | 32 |

Annex IV
Retail market prices of selected agricultural commodities in 2005

قیمت های امتهه زراعتی مارکیت های ولایات

(Source: FAAHM, MAAHF)

9. Best Quality Wheat Seed (Afs/Kg)

تخم گندم با کیفیت عالی کیلو گرام / افغانی

| SN | Region | Province | Jan | Feb | Mar | Apr | May | Jun | Jul | Aug | Sep | Oct | Nov | Dec | ولایت | منطقه | نمبر |
|----|--------------|------------|-----|-----|-----|-----|-----|-----|-----|-----|-----|-----|-----|-----|---------|-----------|------|
| 1 | North | Faryab | 14 | 14 | 14 | 14 | 14 | 14 | 14 | | | 13 | 13 | 13 | فاریاب | شمال | 1 |
| 2 | North | Juzjan | 9 | 9 | 12 | 11 | 11 | 11 | 11 | 11 | 12 | | 12 | 13 | جوزجان | شمال | 2 |
| 3 | North | Sar-i-Pul | 11 | 11 | 12 | 11 | 11 | 11 | 11 | | 13 | | 13 | 12 | سر پل | شمال | 3 |
| 4 | North | Balkh | 11 | 11 | 11 | 11 | 11 | 11 | 11 | 11 | 11 | 13 | 13 | 14 | بلخ | شمال | 4 |
| 5 | North | Samangan | 10 | 10 | 10 | | | | | | 11 | 10 | 10 | 10 | سمنگان | شمال | 5 |
| 6 | North-East | Bughlan | 11 | 10 | 10 | | | | | | 10 | 11 | 11 | 11 | بغلان | شمال شرق | 6 |
| 7 | North-East | Kunduz | 13 | 13 | 13 | | | | | | 12 | 11 | 20 | 15 | کندز | شمال شرق | 7 |
| 8 | North-East | Takhar | 13 | 13 | 13 | 13 | 13 | 13 | 13 | | | 12 | 12 | 11 | تخار | شمال شرق | 8 |
| 9 | North-East | Badakhshan | 13 | 10 | 10 | | | | | | | | 13 | 13 | بدخشان | شمال شرق | 9 |
| 10 | West | Hirat | 17 | 17 | 17 | | | | | | 13 | 10 | 12 | 10 | هرات | غرب | 10 |
| 11 | West | Farah | 16 | 16 | 16 | | | | | | 13 | 11 | 12 | 12 | فراه | غرب | 11 |
| 12 | West | Badghis | 11 | 11 | 11 | | | | | | 13 | 11 | 12 | 13 | بادغیس | غرب | 12 |
| 13 | West-Central | Ghor | 10 | 10 | 10 | | | | | | 13 | 12 | 13 | 13 | غور | غرب مرکزی | 13 |
| 14 | West-Central | Bamyan | 13 | 13 | 13 | 14 | 14 | 14 | 14 | | 14 | 12 | 14 | 14 | بامیان | غرب مرکزی | 14 |
| 15 | Central | Kabul | 13 | 13 | 14 | 29 | 25 | 22 | 22 | | 15 | 15 | 13 | 15 | کابل | مرکزی | 15 |
| 16 | Central | Parwan | 20 | 20 | 22 | 15 | 15 | 15 | 15 | | | | 15 | 15 | پروان | مرکزی | 16 |
| 17 | Central | Kapisa | 16 | 16 | 16 | | | | | | | 11 | 13 | 14 | کاپیسا | مرکزی | 17 |
| 18 | Central | Logar | 34 | 33 | 33 | 15 | 15 | 15 | 15 | 15 | | | 14 | 14 | لوگر | مرکزی | 18 |
| 19 | Central | Wardak | 20 | 20 | 22 | 20 | 20 | 20 | 20 | | 15 | 15 | 15 | 15 | وردک | مرکزی | 19 |
| 20 | South | Paktya | 17 | 16 | 15 | | | | | | | | 11 | 12 | پکتیا | جنوب | 20 |
| 21 | South | Paktika | 16 | 16 | | | | | | | | | 11 | 15 | پکتیکا | جنوب | 21 |
| 22 | South | Khost | 13 | 13 | 13 | 15 | 25 | 18 | 18 | | 13 | 12 | 12 | 12 | خوست | جنوب | 22 |
| 23 | South | Ghazni | 20 | 20 | 20 | 17 | 17 | | | | 13 | | 16 | 16 | غزنی | جنوب | 23 |
| 24 | East | Nangarhar | 14 | 10 | 10 | 16 | 16 | 15 | 15 | 15 | | 14 | 16 | 15 | ننگرهار | شرق | 24 |
| 25 | East | Laghman | 19 | 19 | 19 | | | | | | | 17 | 18 | 18 | لغمان | شرق | 25 |
| 26 | East | Kunarha | 12 | 11 | 11 | 11 | 11 | 10 | 10 | | | | | | کنرها | شرق | 26 |
| 27 | East | Nooristan | | | | | | | | | | | | | نورستان | شرق | 27 |
| 28 | South-West | Kandahar | 17 | 17 | 17 | 15 | 15 | | | | 13 | | 16 | 17 | کندهار | جنوب غرب | 28 |
| 29 | South-West | Helmand | 12 | 11 | 11 | 14 | 14 | | | | 12 | 12 | 12 | 14 | هلمند | جنوب غرب | 29 |
| 30 | South-West | Zabul | | | | 20 | 20 | | | | 21 | 23 | 21 | 21 | زابل | جنوب غرب | 30 |
| 31 | South-West | Nimroz | 18 | 18 | 18 | 17 | 17 | 17 | 17 | | | | | 9 | نیمروز | جنوب غرب | 31 |
| 32 | South-West | Uruzgan | 30 | 30 | 25 | | | | | | | | | 16 | اروزگان | جنوب غرب | 32 |

Annex IV
Retail market prices of selected agricultural commodities in 2005

قیمت های امتهه زراعتی مارکیت های ولایات

(Source: FAAHM, MAAHF)

10. Improved variety wheat seed (Afs/Kg)

تخم اصلاح شده گندم افغانی / کیلو گرام

| SN | Region | Province | Jan | Feb | Mar | Apr | May | Jun | Jul | Aug | Sep | Oct | Nov | Dec | ولایت | منطقه | نمبر |
|----|--------------|------------|-----|-----|-----|-----|-----|-----|-----|-----|-----|-----|-----|-----|---------|-----------|------|
| 1 | North | Faryab | 8 | 8 | 8 | | | | | | | 13 | | | فاریاب | شمال | 1 |
| 2 | North | Juzjan | 8 | 9 | 10 | | | | | | 11 | 12 | | | جوزجان | شمال | 2 |
| 3 | North | Sar-i-Pul | 10 | 11 | 11 | | | 10 | 10 | | 11 | 11 | | | سر پل | شمال | 3 |
| 4 | North | Balkh | 8 | 8 | 8 | 10 | 10 | 10 | 10 | 10 | 11 | 13 | | | بلخ | شمال | 4 |
| 5 | North | Samangan | 9 | 10 | 10 | | | | | | 11 | 10 | | | سمنگان | شمال | 5 |
| 6 | North-East | Bughlan | 10 | 10 | 10 | | | | | | 10 | 11 | | | بغلان | شمال شرق | 6 |
| 7 | North-East | Kunduz | 11 | 11 | 11 | | | | | | 11 | 11 | | | کندز | شمال شرق | 7 |
| 8 | North-East | Takhar | 11 | 11 | 11 | 12 | 12 | 12 | 12 | | | | | | تخار | شمال شرق | 8 |
| 9 | North-East | Badakhshan | 12 | 10 | 10 | | | | | | | | | | بدخشان | شمال شرق | 9 |
| 10 | West | Hirat | 14 | 15 | 15 | | | | | | 12 | 10 | | | هرات | غرب | 10 |
| 11 | West | Farah | 14 | 15 | 15 | | | | | | 11 | 11 | | | فراه | غرب | 11 |
| 12 | West | Badghis | 9 | 9 | 9 | | | | | | 11 | 11 | | | بادغیس | غرب | 12 |
| 13 | West-Central | Ghor | 9 | 9 | 10 | | | | | | | 12 | | | غور | غرب مرکزی | 13 |
| 14 | West-Central | Bamyan | 10 | 10 | 10 | | | | | | 13 | 12 | | | بامیان | غرب مرکزی | 14 |
| 15 | Central | Kabul | 11 | 11 | 11 | 25 | 22 | | | | 13 | 15 | | | کابل | مرکزی | 15 |
| 16 | Central | Parwan | | | | | | | | | | | | | پروان | مرکزی | 16 |
| 17 | Central | Kapisa | 14 | 14 | 14 | | | | | | 13 | 11 | | | کاپیسا | مرکزی | 17 |
| 18 | Central | Logar | 20 | 20 | 20 | 15 | 15 | 15 | 15 | 15 | | | | | لوگر | مرکزی | 18 |
| 19 | Central | Wardak | | | | | | | | | 14 | 14 | | | وردک | مرکزی | 19 |
| 20 | South | Paktya | 16 | 16 | 15 | | | | | | | | | | پکتیا | جنوب | 20 |
| 21 | South | Paktika | 15 | 15 | 15 | | | | | | | | | | پکتیکا | جنوب | 21 |
| 22 | South | Khost | 13 | 13 | 13 | 15 | 20 | 15 | 15 | | 23 | | | | خوست | جنوب | 22 |
| 23 | South | Ghazni | 18 | 18 | 18 | 13 | 13 | | | | 13 | 18 | | | غزنی | جنوب | 23 |
| 24 | East | Nangarhar | 14 | 10 | 10 | 14 | 14 | 14 | 14 | 14 | 15 | 14 | | | ننگرهار | شرق | 24 |
| 25 | East | Laghman | | | | | | | | | | | | | لغمان | شرق | 25 |
| 26 | East | Kunarha | 11 | 11 | 11 | 11 | 11 | 10 | 10 | | | | | | کنرها | شرق | 26 |
| 27 | East | Nooristan | 16 | 16 | 16 | 17 | 17 | 17 | 17 | | | | | | نورستان | شرق | 27 |
| 28 | South-West | Kandahar | 12 | 13 | 13 | 14 | 14 | | | | 12 | | | | کندهار | جنوب غرب | 28 |
| 29 | South-West | Helmand | 11 | 11 | 10 | 10 | 10 | | | | 10 | | | | هلمند | جنوب غرب | 29 |
| 30 | South-West | Zabul | 25 | 25 | 25 | 14 | 14 | | | | 21 | 18 | | | زابل | جنوب غرب | 30 |
| 31 | South-West | Nimroz | 17 | 17 | 16 | 16 | 17 | 17 | 17 | | | | | | نیمروز | جنوب غرب | 31 |
| 32 | South-West | Uruzgan | 28 | 28 | 22 | | | | | | | | | | اروزگان | جنوب غرب | 32 |

Annex IV
Retail market prices of selected agricultural commodities in 2005

قیمت های امتهه زراعتی مارکیت های ولایات

(Source: FAAHM, MAAHF)

11. Agriculture Labour (Afs/Day)

کارگر زراعتی افغانی / کیلو گرام

| SN | Region | Province | Jan | Feb | Mar | Apr | May | Jun | Jul | Aug | Sep | Oct | Nov | Dec | ولایت | منطقه | نمبر |
|----|--------------|------------|-----|-----|-----|-----|-----|-----|-----|-----|-----|-----|-----|-----|---------|-----------|------|
| 1 | North | Faryab | 150 | 150 | 180 | 200 | 200 | 240 | 240 | | 250 | 250 | 250 | 200 | فاریاب | شمال | 1 |
| 2 | North | Juzjan | 140 | 140 | 200 | 150 | 150 | 150 | 150 | 150 | 150 | 150 | 150 | 150 | جوزجان | شمال | 2 |
| 3 | North | Sar-i-Pul | 120 | 150 | 200 | | | 200 | 250 | | 180 | 250 | 200 | 200 | سر پل | شمال | 3 |
| 4 | North | Balkh | 180 | 200 | 230 | 130 | 150 | 150 | 200 | 200 | 200 | 200 | 200 | 200 | بلخ | شمال | 4 |
| 5 | North | Samangan | 120 | 120 | 150 | | | | | 200 | 200 | 200 | 200 | 180 | سمنگان | شمال | 5 |
| 6 | North-East | Bughlan | 130 | 120 | 150 | 150 | 180 | | | | 180 | 300 | 150 | 150 | بغلان | شمال شرق | 6 |
| 7 | North-East | Kunduz | 130 | 130 | 150 | 130 | 130 | | | | 180 | 170 | 190 | 190 | کندز | شمال شرق | 7 |
| 8 | North-East | Takhar | 100 | 100 | 120 | 130 | 130 | 130 | 130 | | 200 | 180 | 180 | 150 | تخار | شمال شرق | 8 |
| 9 | North-East | Badakhshan | 120 | 120 | 120 | | | | | | | | 200 | 250 | بدخشان | شمال شرق | 9 |
| 10 | West | Hirat | 150 | 140 | 150 | | | | | | 180 | 300 | 150 | 150 | هرات | غرب | 10 |
| 11 | West | Farah | 200 | 200 | 200 | | | | | | 200 | 200 | 200 | 200 | فراه | غرب | 11 |
| 12 | West | Badghis | 100 | 100 | 110 | | | | | | 150 | 150 | 150 | 150 | بادغیس | غرب | 12 |
| 13 | West-Central | Ghor | 100 | 100 | 150 | | | | | | 200 | 200 | 200 | 200 | غور | غرب مرکزی | 13 |
| 14 | West-Central | Bamyan | 200 | 200 | 200 | 150 | 150 | 150 | 150 | | 190 | 190 | 170 | 160 | بامیان | غرب مرکزی | 14 |
| 15 | Central | Kabul | 180 | 180 | 200 | 200 | 200 | 180 | 180 | 200 | 170 | 170 | 200 | 150 | کابل | مرکزی | 15 |
| 16 | Central | Parwan | 200 | 200 | 200 | 150 | 200 | 175 | 175 | | | | 180 | 180 | پروان | مرکزی | 16 |
| 17 | Central | Kapisa | 200 | 200 | 250 | | | | | | 200 | 200 | 200 | 200 | کاپیسا | مرکزی | 17 |
| 18 | Central | Logar | 200 | 200 | 200 | 180 | 180 | 180 | 180 | 180 | 200 | 150 | 200 | 200 | لوگر | مرکزی | 18 |
| 19 | Central | Wardak | 200 | 200 | 200 | 200 | 200 | 200 | 200 | | 200 | 200 | 180 | 200 | وردک | مرکزی | 19 |
| 20 | South | Paktya | 170 | 170 | 170 | | | | | 180 | | 200 | 190 | 190 | پکتیا | جنوب | 20 |
| 21 | South | Paktika | 180 | 180 | 180 | | | | | | | | 190 | 185 | پکتیکا | جنوب | 21 |
| 22 | South | Khost | | | | 160 | 160 | 150 | 150 | 200 | 200 | 150 | 200 | 200 | خوست | جنوب | 22 |
| 23 | South | Ghazni | 120 | 120 | 150 | 150 | 150 | 200 | 200 | | 200 | 200 | 200 | 200 | غزنی | جنوب | 23 |
| 24 | East | Nangarhar | 150 | 150 | 150 | 150 | 150 | 150 | 150 | 140 | 120 | 150 | 160 | 160 | ننگرهار | شرق | 24 |
| 25 | East | Laghman | 160 | 160 | 160 | | | | | | | 150 | 150 | 200 | لغمان | شرق | 25 |
| 26 | East | Kunarha | 120 | 120 | 120 | 120 | 120 | 120 | 120 | | 200 | 120 | 120 | 120 | کنرھا | شرق | 26 |
| 27 | East | Nooristan | 150 | 150 | 150 | 150 | 150 | 150 | 150 | | | | | | نورستان | شرق | 27 |
| 28 | South-West | Kandahar | 150 | 150 | 150 | 150 | 150 | 200 | 200 | 200 | 200 | 250 | 200 | 200 | کندهار | جنوب غرب | 28 |
| 29 | South-West | Helmand | 150 | 150 | 150 | 200 | 200 | 200 | 200 | 200 | 200 | 200 | 200 | 200 | هلمند | جنوب غرب | 29 |
| 30 | South-West | Zabul | 160 | 160 | 160 | 200 | 200 | 200 | 200 | 200 | 200 | 200 | 220 | 200 | زابل | جنوب غرب | 30 |
| 31 | South-West | Nimroz | 225 | 250 | 250 | 250 | 300 | 300 | 300 | 200 | 200 | | 270 | 280 | نیمروز | جنوب غرب | 31 |
| 32 | South-West | Uruzgan | 200 | 200 | 200 | | | | | | | | | 220 | اروزگان | جنوب غرب | 32 |

Annex IV
Retail market prices of selected agricultural commodities in 2005

قیمت های امتعه زراعتی مارکیت های ولایات

(Source: FAAHM, MAAHF)

12. Pair of Oxen Hiring (Afs/Day)

قلبه گاو افغانی در روز

| SN | Region | Province | Jan | Feb | Mar | Apr | May | Jun | Jul | Aug | Sep | Oct | Nov | Dec | ولایت | منطقه | نمبر |
|----|--------------|------------|-----|-----|------|-----|-----|-----|-----|-----|------|------|-----|------|---------|-----------|------|
| 1 | North | Faryab | 400 | 400 | 400 | 350 | 350 | 350 | 350 | | 400 | 600 | 600 | 550 | فاریاب | شمال | 1 |
| 2 | North | Juzjan | 600 | 500 | 600 | 600 | 600 | 600 | 600 | | 100 | 100 | 600 | 600 | جوزجان | شمال | 2 |
| 3 | North | Sar-i-Pul | 200 | 300 | 350 | | | 350 | 350 | | 400 | 600 | 700 | 700 | سر پل | شمال | 3 |
| 4 | North | Balkh | 700 | 800 | 1000 | 600 | 600 | 600 | 600 | 600 | 700 | 700 | 680 | 680 | بلخ | شمال | 4 |
| 5 | North | Samangan | 400 | 400 | 500 | | | | | | 500 | 600 | 600 | 500 | سمنگان | شمال | 5 |
| 6 | North-East | Bughlan | 450 | 400 | 400 | 600 | 600 | | | | 600 | 800 | 800 | 800 | بغلان | شمال شرق | 6 |
| 7 | North-East | Kunduz | 450 | 400 | 400 | | | | | | 500 | 500 | 500 | 500 | کندز | شمال شرق | 7 |
| 8 | North-East | Takhar | 350 | 350 | 350 | 350 | 350 | 300 | 300 | | | | 600 | 600 | تخار | شمال شرق | 8 |
| 9 | North-East | Badakhshan | | | | | | | | | | | 300 | 300 | بدخشان | شمال شرق | 9 |
| 10 | West | Hirat | 500 | | | | | | | | 400 | 300 | 500 | 1500 | هرات | غرب | 10 |
| 11 | West | Farah | 400 | 400 | 400 | | | | | | 200 | 250 | 450 | 450 | فراه | غرب | 11 |
| 12 | West | Badghis | 350 | | | | | | | | 200 | 220 | 200 | 300 | بادغیس | غرب | 12 |
| 13 | West-Central | Ghor | | 600 | 700 | | | | | | 500 | 500 | 500 | 500 | غور | غرب مرکزی | 13 |
| 14 | West-Central | Bamyan | | | | | | 600 | 600 | | 850 | 800 | | | بامیان | غرب مرکزی | 14 |
| 15 | Central | Kabul | 500 | 500 | 500 | 400 | 400 | 500 | 500 | 800 | 500 | 350 | 500 | 600 | کابل | مرکزی | 15 |
| 16 | Central | Parwan | 500 | 500 | 500 | 500 | 500 | 350 | 350 | | | | 500 | 500 | پروان | مرکزی | 16 |
| 17 | Central | Kapisa | 500 | 500 | 450 | | | | | | 500 | 500 | 500 | 500 | کاپیسا | مرکزی | 17 |
| 18 | Central | Logar | 300 | 300 | 300 | 500 | 500 | 700 | 700 | 900 | 1000 | 1000 | 600 | 600 | لوگر | مرکزی | 18 |
| 19 | Central | Wardak | 500 | 500 | 500 | 450 | 450 | 450 | 450 | | 600 | 600 | 500 | 450 | وردک | مرکزی | 19 |
| 20 | South | Paktya | | | | | | | | | | | 500 | 500 | پکتیا | جنوب | 20 |
| 21 | South | Paktika | | | | | | | | | | | 500 | 550 | پکتیکا | جنوب | 21 |
| 22 | South | Khost | | | | | | | | | | 800 | | | خوست | جنوب | 22 |
| 23 | South | Ghazni | | | | | | 650 | 650 | | 500 | 600 | 600 | 600 | غزنی | جنوب | 23 |
| 24 | East | Nangarhar | 500 | 500 | 500 | 350 | 350 | 350 | 400 | 400 | 400 | 500 | 500 | 500 | ننگرهار | شرق | 24 |
| 25 | East | Laghman | 500 | 500 | 500 | | | | | | 500 | 500 | 500 | 500 | لغمان | شرق | 25 |
| 26 | East | Kunarha | 250 | 250 | 250 | 200 | 200 | 200 | 200 | | 450 | 200 | 200 | 1600 | کنرها | شرق | 26 |
| 27 | East | Nooristan | | | 300 | 300 | 300 | 300 | 300 | | | | | | نورستان | شرق | 27 |
| 28 | South-West | Kandahar | | | | | | | | | | | | | کندهار | جنوب غرب | 28 |
| 29 | South-West | Helmand | | | | | | | | | | | | | هلمند | جنوب غرب | 29 |
| 30 | South-West | Zabul | 500 | 500 | 500 | | | | | | 750 | 800 | 800 | 700 | زابل | جنوب غرب | 30 |
| 31 | South-West | Nimroz | | | | | | | | | | | | | نیمروز | جنوب غرب | 31 |
| 32 | South-West | Uruzgan | 600 | 600 | 600 | | | | | | | | | 450 | اروزگان | جنوب غرب | 32 |

Annex IV
Retail market prices of selected agricultural commodities in 2005

قیمت های امتعه زراعتی مارکیت های ولایات
(Source: FAAHM, MAAHF)

13. Service Charge for Water Pump (Afs/Hour)

قیمت واتر پمپ فی ساعت

| SN | Region | Province | Jan | Feb | Mar | Apr | May | Jun | Jul | Aug | Sep | Oct | Nov | Dec | ولایت | منطقه | نمبر |
|----|--------------|------------|-----|-----|-----|-----|-----|-----|-----|-----|-----|-----|-----|-----|---------|-----------|------|
| 1 | North | Faryab | 250 | 250 | 250 | 200 | 200 | 200 | 200 | | | 450 | 200 | | فاریاب | شمال | 1 |
| 2 | North | Juzjan | 250 | 250 | 300 | 200 | 200 | 200 | 200 | 200 | 200 | 200 | 200 | 200 | جوزجان | شمال | 2 |
| 3 | North | Sar-i-Pul | 100 | 120 | 200 | | | | | | | 200 | 250 | | سر پل | شمال | 3 |
| 4 | North | Balkh | 200 | 250 | 300 | 500 | 500 | 500 | 300 | 200 | 200 | 250 | 250 | 250 | بلخ | شمال | 4 |
| 5 | North | Samangan | 150 | 200 | 250 | | | | | | | 250 | | | سمنگان | شمال | 5 |
| 6 | North-East | Bughlan | | | | | | | | | 200 | 130 | 130 | 140 | بغلان | شمال شرق | 6 |
| 7 | North-East | Kunduz | | | | | | | | | | | | | کندز | شمال شرق | 7 |
| 8 | North-East | Takhar | | | | | | | | | | | | | تخار | شمال شرق | 8 |
| 9 | North-East | Badakhshan | | | | | | | | | | | | | بدخشان | شمال شرق | 9 |
| 10 | West | Hirat | 150 | | | | | | | | 200 | 350 | 100 | 100 | هرات | غرب | 10 |
| 11 | West | Farah | 80 | 80 | 80 | | | | | | 70 | 100 | 100 | 100 | فراه | غرب | 11 |
| 12 | West | Badghis | | | | | | | | | | | | | بادغیس | غرب | 12 |
| 13 | West-Central | Ghor | | | | | 100 | | | | 250 | 250 | 250 | 250 | غور | غرب مرکزی | 13 |
| 14 | West-Central | Bamyan | | | | | | 170 | 170 | | | | | | بامیان | غرب مرکزی | 14 |
| 15 | Central | Kabul | | | 120 | 90 | 90 | 120 | 120 | 200 | 100 | 120 | | 150 | کابل | مرکزی | 15 |
| 16 | Central | Parwan | 120 | 120 | 120 | | | 200 | 200 | | | | 600 | 600 | پروان | مرکزی | 16 |
| 17 | Central | Kapisa | 350 | 350 | 350 | | | | | | 400 | 400 | | | کاپیسا | مرکزی | 17 |
| 18 | Central | Logar | 170 | 150 | 150 | 150 | 150 | 150 | 150 | 150 | 170 | 170 | | | لوگر | مرکزی | 18 |
| 19 | Central | Wardak | 120 | 120 | 120 | 120 | 120 | 120 | 120 | | 90 | 120 | 140 | 140 | وردک | مرکزی | 19 |
| 20 | South | Paktya | | | | | | | | 180 | | 250 | | | پکتیا | جنوب | 20 |
| 21 | South | Paktika | 250 | 250 | 250 | | | | | | | | 120 | 120 | پکتیکا | جنوب | 21 |
| 22 | South | Khost | 200 | | | 400 | 420 | 250 | 250 | | 260 | 290 | 290 | 290 | خوست | جنوب | 22 |
| 23 | South | Ghazni | 150 | 150 | 150 | | | | | | 150 | 180 | 150 | 150 | غزنی | جنوب | 23 |
| 24 | East | Nangarhar | 200 | 200 | 200 | 70 | 70 | 70 | 80 | 80 | 100 | 150 | 160 | 150 | ننگرهار | شرق | 24 |
| 25 | East | Laghman | | | | | | | | | | | | | لغمان | شرق | 25 |
| 26 | East | Kunarha | 200 | 200 | 200 | 200 | 200 | 200 | 200 | | | | | | کنرها | شرق | 26 |
| 27 | East | Nooristan | | | | | | | | | | | | | نورستان | شرق | 27 |
| 28 | South-West | Kandahar | 300 | 300 | 300 | 120 | 120 | | | | | | 300 | 350 | کندهار | جنوب غرب | 28 |
| 29 | South-West | Helmand | 200 | 200 | 200 | 150 | 150 | | | | 240 | 242 | 100 | 100 | هلمند | جنوب غرب | 29 |
| 30 | South-West | Zabul | | | | | | | | | 300 | 300 | 250 | 290 | زابل | جنوب غرب | 30 |
| 31 | South-West | Nimroz | | | | | | | | | | | | | نیمروز | جنوب غرب | 31 |
| 32 | South-West | Uruzgan | | | | | | | | | | | 290 | | اروزگان | جنوب غرب | 32 |

Annex IV
Retail market prices of selected agricultural commodities in 2005

قیمت های امتعه زراعتی مارکیت های ولایات

(Source: FAAHM, MAAHF)

14. Local Urea (Afs/Kg)

یوریا محلی افغانی / کیلو گرام

| SN | Region | Province | Jan | Feb | Mar | Apr | May | Jun | Jul | Aug | Sep | Oct | Nov | Dec | ولایت | منطقه | نمبر |
|----|--------------|------------|-----|-----|-----|-----|-----|-----|-----|-----|-----|-----|-----|-----|---------|-----------|------|
| 1 | North | Faryab | 12 | 12 | 12 | 14 | 14 | 14 | 14 | | 14 | 14 | 14 | 12 | فاریاب | شمال | 1 |
| 2 | North | Juzjan | 10 | 10 | 10 | 11 | 11 | 12 | 12 | 14 | | | | | جوزجان | شمال | 2 |
| 3 | North | Sar-i-Pul | 11 | 11 | 11 | | | 13 | 13 | 12 | 13 | | 10 | 13 | سر پل | شمال | 3 |
| 4 | North | Balkh | 12 | 12 | 12 | 10 | 10 | 10 | 10 | 10 | 13 | 13 | 13 | 13 | بلخ | شمال | 4 |
| 5 | North | Samangan | 12 | 12 | 12 | | | | | 13 | 13 | 11 | 11 | 10 | سمنگان | شمال | 5 |
| 6 | North-East | Bughlan | 11 | 12 | 12 | 12 | 12 | | | 10 | 15 | 12 | 11 | 12 | بغلان | شمال شرق | 6 |
| 7 | North-East | Kunduz | 12 | 12 | 13 | 11 | 11 | | | | 12 | 12 | 12 | 12 | کندز | شمال شرق | 7 |
| 8 | North-East | Takhar | 9 | 11 | 11 | 10 | 10 | 10 | 10 | | 13 | 11 | 13 | 15 | تخار | شمال شرق | 8 |
| 9 | North-East | Badakhshan | 14 | 14 | 15 | | | | 12 | | | | 10 | | بدخشان | شمال شرق | 9 |
| 10 | West | Hirat | | | | | | 7 | 7 | | | | | | هرات | غرب | 10 |
| 11 | West | Farah | | | | | | | | | | 15 | 16 | 14 | فراه | غرب | 11 |
| 12 | West | Badghis | | | | | | | | | | | | | بادغیس | غرب | 12 |
| 13 | West-Central | Ghor | | | | | | | | | | | 14 | | غور | غرب مرکزی | 13 |
| 14 | West-Central | Bamyan | | | | | | 14 | 14 | 14 | 14 | 14 | 14 | 14 | بامیان | غرب مرکزی | 14 |
| 15 | Central | Kabul | 11 | 11 | 11 | | | | | 12 | 11 | 12 | | | کابل | مرکزی | 15 |
| 16 | Central | Parwan | 10 | 10 | 10 | 12 | 12 | 14 | 14 | 11 | | | 11 | 12 | پروان | مرکزی | 16 |
| 17 | Central | Kapisa | | | | | | | | 13 | | | | 12 | کاپیسا | مرکزی | 17 |
| 18 | Central | Logar | | | | | | 12 | 12 | | | | | | لوگر | مرکزی | 18 |
| 19 | Central | Wardak | | | | | | | | | 12 | 11 | 11 | 11 | وردک | مرکزی | 19 |
| 20 | South | Paktya | | | | | | | | | | | 12 | | پکتیا | جنوب | 20 |
| 21 | South | Paktika | | | | | | | | | | | 12 | 12 | پکتیکا | جنوب | 21 |
| 22 | South | Khost | | | | | | 12 | 12 | | | | | | خوست | جنوب | 22 |
| 23 | South | Ghazni | | | | | | | | | 11 | | 12 | 12 | غزنی | جنوب | 23 |
| 24 | East | Nangarhar | | | | | | | | | | | | | ننگرهار | شرق | 24 |
| 25 | East | Laghman | | | | | | | | | | | | | لغمان | شرق | 25 |
| 26 | East | Kunarha | | | | | | | | | | | | | کنرھا | شرق | 26 |
| 27 | East | Nooristan | 18 | 18 | 16 | 16 | 16 | 16 | 16 | | | | | | نورستان | شرق | 27 |
| 28 | South-West | Kandahar | 10 | 11 | 13 | | | | | | 11 | 12 | | | کندهار | جنوب غرب | 28 |
| 29 | South-West | Helmand | | | | | | | | | | | | | هلمند | جنوب غرب | 29 |
| 30 | South-West | Zabul | | | | | | | | | | | | 12 | زابل | جنوب غرب | 30 |
| 31 | South-West | Nimroz | | | | | | | | | | | | | نیمروز | جنوب غرب | 31 |
| 32 | South-West | Uruzgan | | | | | | | | | | | | | اروزگان | جنوب غرب | 32 |

Annex IV
Retail market prices of selected agricultural commodities in 2005

قیمت های امتعه زراعتی مارکیت های ولایات
(Source: FAAHM, MAAHF)

15. Urea Imported, best quality (Afs/Kg)

یوریا وارداتی باکیفیت افغانی / کیلو گرام

| SN | Region | Province | Jan | Feb | Mar | Apr | May | Jun | Jul | Aug | Sep | Oct | Nov | Dec | ولایت | منطقه | نمبر |
|----|--------------|------------|-----|-----|-----|-----|-----|-----|-----|-----|-----|-----|-----|-----|---------|-----------|------|
| 1 | North | Faryab | 10 | 10 | 10 | 12 | 12 | 12 | 12 | 12 | 13 | 14 | 14 | 10 | فاریاب | شمال | 1 |
| 2 | North | Juzjan | 6 | 7 | 8 | | | | | 9 | | | | | جوزجان | شمال | 2 |
| 3 | North | Sar-i-Pul | 10 | 10 | 10 | | | 12 | 12 | | 11 | | 10 | | سر پل | شمال | 3 |
| 4 | North | Balkh | 7 | 7 | 7 | 7 | 7 | 8 | 8 | 9 | 9 | 9 | 12 | 12 | بلخ | شمال | 4 |
| 5 | North | Samangan | 12 | 12 | 12 | | | | | | 9 | 10 | | 11 | سمنگان | شمال | 5 |
| 6 | North-East | Bughlan | | | | | | | | 12 | 10 | 12 | 10 | 10 | بغلان | شمال شرق | 6 |
| 7 | North-East | Kunduz | | | | | | | | 10 | 11 | 11 | 11 | 11 | کندز | شمال شرق | 7 |
| 8 | North-East | Takhar | 13 | 12 | 12 | 11 | 11 | 11 | 11 | | 13 | 11 | 14 | 13 | تخار | شمال شرق | 8 |
| 9 | North-East | Badakhshan | 14 | 14 | 15 | | | | 12 | | | | | | بدخشان | شمال شرق | 9 |
| 10 | West | Hirat | 10 | 10 | 11 | | | | | 11 | 12 | 12 | 12 | 15 | هرات | غرب | 10 |
| 11 | West | Farah | 12 | 13 | 13 | | | | | 14 | 16 | 16 | | 16 | فراه | غرب | 11 |
| 12 | West | Badghis | 12 | 12 | 13 | | | | | | 12 | 12 | 15 | 10 | بادغیس | غرب | 12 |
| 13 | West-Central | Ghor | 12 | 12 | 12 | | | | | 14 | 12 | 14 | | 14 | غور | غرب مرکزی | 13 |
| 14 | West-Central | Bamyan | 14 | 14 | 14 | 13 | 13 | 13 | 13 | 12 | 12 | 13 | 13 | 13 | بامیان | غرب مرکزی | 14 |
| 15 | Central | Kabul | 11 | 12 | 12 | 11 | 11 | 12 | 12 | | | 12 | 12 | 13 | کابل | مرکزی | 15 |
| 16 | Central | Parwan | 9 | 10 | 10 | 13 | 13 | 15 | 15 | 12 | | | 10 | 13 | پروان | مرکزی | 16 |
| 17 | Central | Kapisa | 12 | 12 | 13 | | | | | 15 | 13 | 12 | 12 | 13 | کاپیسا | مرکزی | 17 |
| 18 | Central | Logar | 11 | 11 | 11 | 12 | 12 | 13 | 13 | 12 | 12 | 12 | 15 | 12 | لوگر | مرکزی | 18 |
| 19 | Central | Wardak | 11 | 11 | 11 | 12 | 12 | 12 | 12 | 12 | 12 | 12 | 12 | 12 | وردک | مرکزی | 19 |
| 20 | South | Paktya | | | | | | | | 11 | | 13 | 12 | 12 | پکتیا | جنوب | 20 |
| 21 | South | Paktika | 11 | 12 | 12 | | | | | | | | 11 | 13 | پکتیکا | جنوب | 21 |
| 22 | South | Khost | 12 | 11 | 11 | 15 | 15 | 12 | 12 | 11 | 11 | 11 | 11 | 14 | خوست | جنوب | 22 |
| 23 | South | Ghazni | 9 | 10 | 11 | | | | | 15 | 12 | 12 | 13 | 13 | غزنی | جنوب | 23 |
| 24 | East | Nangarhar | 14 | 14 | 12 | 11 | 11 | 11 | 10 | 10 | 10 | 10 | 12 | 12 | ننگرهار | شرق | 24 |
| 25 | East | Laghman | 12 | 12 | 12 | | | | | | | | 12 | 12 | لغمان | شرق | 25 |
| 26 | East | Kunarha | 12 | 12 | 12 | 12 | 12 | 12 | 12 | 12 | 12 | 13 | 12 | 14 | کنرها | شرق | 26 |
| 27 | East | Nooristan | 20 | 20 | 21 | 22 | 22 | 23 | 23 | | | | | | نورستان | شرق | 27 |
| 28 | South-West | Kandahar | 11 | 12 | 13 | 13 | 13 | | | 10 | 12 | 12 | 13 | 13 | کندهار | جنوب غرب | 28 |
| 29 | South-West | Helmand | 12 | 13 | 14 | 12 | 12 | | | 12 | 12 | 10 | 12 | 12 | هلمند | جنوب غرب | 29 |
| 30 | South-West | Zabul | 15 | 15 | 17 | 12 | 12 | | | 16 | 11 | | 12 | 12 | زابل | جنوب غرب | 30 |
| 31 | South-West | Nimroz | 12 | 12 | 12 | 10 | 10 | 9 | 9 | | | | 11 | 12 | نیمروز | جنوب غرب | 31 |
| 32 | South-West | Uruzgan | 12 | 12 | 14 | | | | | | | | | 13 | اروزگان | جنوب غرب | 32 |

Annex IV
Retail market prices of selected agricultural commodities in 2005

قیمت های امتعه زراعتی مارکیت های ولایات

(Source: FAAHM, MAAHF)

16. Best Quality DAP (Afs/Kg)

دی ای پی با کیفیت کیو گرام / افغانی

| SN | Region | Province | Jan | Feb | Mar | Apr | May | Jun | Jul | Aug | Sep | Oct | Nov | Dec | ولایت | منطقه | نمبر |
|----|--------------|------------|-----|-----|-----|-----|-----|-----|-----|-----|-----|-----|-----|-----|---------|-----------|------|
| 1 | North | Faryab | 10 | 10 | 10 | 9 | 9 | 9 | 9 | 10 | 14 | 10 | 14 | 12 | فاریاب | شمال | 1 |
| 2 | North | Juzjan | 10 | 10 | 10 | | | | | 9 | | | | | جوزجان | شمال | 2 |
| 3 | North | Sar-i-Pul | 14 | 14 | 14 | | | 11 | 11 | 12 | 21 | 21 | 14 | 25 | سر پل | شمال | 3 |
| 4 | North | Balkh | 16 | 16 | 16 | 16 | 16 | 15 | 10 | 8 | 15 | 9 | 16 | 16 | بلخ | شمال | 4 |
| 5 | North | Samangan | 10 | 10 | 10 | | | | | 18 | | | | | سمنگان | شمال | 5 |
| 6 | North-East | Bughlan | 18 | 18 | 18 | 20 | 20 | | | 30 | 24 | 29 | 22 | 22 | بغلان | شمال شرق | 6 |
| 7 | North-East | Kunduz | 18 | 18 | 18 | 18 | 18 | | | 10 | 22 | 22 | 22 | 22 | کندز | شمال شرق | 7 |
| 8 | North-East | Takhar | 18 | 18 | 18 | 12 | 12 | 12 | 12 | | 25 | 32 | 30 | 27 | تخار | شمال شرق | 8 |
| 9 | North-East | Badakhshan | 23 | 23 | 23 | | | | | | | | | | بدخشان | شمال شرق | 9 |
| 10 | West | Hirat | 24 | 24 | 24 | 24 | 24 | 24 | 24 | 24 | 22 | | 33 | 12 | هرات | غرب | 10 |
| 11 | West | Farah | 25 | 25 | 25 | | | | | 26 | 26 | 26 | 26 | 26 | فراه | غرب | 11 |
| 12 | West | Badghis | 25 | 26 | 26 | | | | | 16 | 17 | 20 | 14 | 14 | بادغیس | غرب | 12 |
| 13 | West-Central | Ghor | 26 | 26 | 26 | | | | | 24 | 21 | 20 | 20 | 20 | غور | غرب مرکزی | 13 |
| 14 | West-Central | Bamyan | 18 | 18 | 18 | 20 | 20 | 25 | 25 | 23 | 23 | 24 | 24 | | بامیان | غرب مرکزی | 14 |
| 15 | Central | Kabul | 19 | 20 | 20 | 24 | 24 | 23 | 23 | 22 | 24 | 23 | 24 | 24 | کابل | مرکزی | 15 |
| 16 | Central | Parwan | 17 | 18 | 18 | 26 | 25 | 25 | 25 | 14 | | | 28 | 28 | پروان | مرکزی | 16 |
| 17 | Central | Kapisa | 22 | 22 | 22 | | | | | 22 | 22 | 24 | 26 | 26 | کاپیسا | مرکزی | 17 |
| 18 | Central | Logar | 25 | 25 | 27 | 25 | 25 | 25 | 25 | 22 | 22 | 22 | 33 | 23 | لوگر | مرکزی | 18 |
| 19 | Central | Wardak | 20 | 20 | 20 | 22 | 22 | 22 | 22 | 24 | 24 | 24 | 25 | 24 | وردک | مرکزی | 19 |
| 20 | South | Paktya | 18 | 20 | 29 | | | | | 22 | | 24 | 22 | 22 | پکتیا | جنوب | 20 |
| 21 | South | Paktika | 25 | 26 | 28 | | | | | | | | 22 | 20 | پکتیکا | جنوب | 21 |
| 22 | South | Khost | 20 | 25 | 27 | 25 | 25 | 22 | 22 | 20 | 21 | 23 | 23 | 23 | خوست | جنوب | 22 |
| 23 | South | Ghazni | 23 | 23 | 25 | 26 | 26 | 24 | 24 | 22 | 24 | 24 | 24 | 23 | غزنی | جنوب | 23 |
| 24 | East | Nangarhar | 19 | 18 | 17 | 21 | 21 | 20 | 20 | 22 | 18 | 22 | 24 | 24 | ننگرهار | شرق | 24 |
| 25 | East | Laghman | 21 | 22 | 22 | | | | | | | 22 | 23 | 27 | لغمان | شرق | 25 |
| 26 | East | Kunarha | 24 | 24 | 24 | 25 | 25 | 25 | 25 | 25 | 23 | 25 | 28 | 28 | کنرھا | شرق | 26 |
| 27 | East | Nooristan | | | 26 | 26 | 26 | 26 | 26 | | | | | | نورستان | شرق | 27 |
| 28 | South-West | Kandahar | 20 | 22 | 23 | 24 | 24 | | | 20 | 26 | 26 | 18 | 18 | کندهار | جنوب غرب | 28 |
| 29 | South-West | Helmand | 23 | 23 | 25 | 24 | 24 | | | 20 | 22 | 22 | 24 | 24 | هلمند | جنوب غرب | 29 |
| 30 | South-West | Zabul | 20 | 20 | 20 | 22 | 22 | | | 20 | 21 | 20 | 22 | 21 | زابل | جنوب غرب | 30 |
| 31 | South-West | Nimroz | 17 | 17 | 17 | 16 | 16 | 15 | 15 | | | | | | نیمروز | جنوب غرب | 31 |
| 32 | South-West | Uruzgan | 21 | 21 | 24 | | | | | | | | | 23 | اروزگان | جنوب غرب | 32 |

Annex IV
Retail market prices of selected agricultural commodities in 2005

قیمت های امتعه زراعتی مارکیت های ولایات
(Source: FAAHM, MAAHF)

17. Tractor Hiring Charge (Afs/Hour)

تراکتور افغانی / ساعت

| SN | Region | Province | Jan | Feb | Mar | Apr | May | Jun | Jul | Aug | Sep | Oct | Nov | Dec | ولایت | منطقه | نمبر |
|----|--------------|------------|-----|-----|-----|-----|-----|-----|-----|-----|-----|-----|-----|------|---------|-----------|------|
| 1 | North | Faryab | | | | | | 420 | 420 | | 600 | 800 | 300 | 650 | فاریاب | شمال | 1 |
| 2 | North | Juzjan | | | | | | 400 | 400 | | 400 | 400 | 700 | 800 | جوزجان | شمال | 2 |
| 3 | North | Sar-i-Pul | | | | | | 450 | 450 | | 500 | 600 | 600 | 600 | سر پل | شمال | 3 |
| 4 | North | Balkh | | | | 400 | 600 | 600 | 500 | 500 | 500 | 500 | 600 | 600 | بلخ | شمال | 4 |
| 5 | North | Samangan | | | | | | | | | 670 | 600 | 600 | 700 | سمنگان | شمال | 5 |
| 6 | North-East | Bughlan | | | | 500 | 500 | | | | 450 | 600 | 300 | 600 | بغلان | شمال شرق | 6 |
| 7 | North-East | Kunduz | | | | 500 | 500 | | | | 500 | 500 | 500 | 500 | کندز | شمال شرق | 7 |
| 8 | North-East | Takhar | 400 | 400 | 400 | | | | | | 550 | 400 | 500 | 700 | تخار | شمال شرق | 8 |
| 9 | North-East | Badakhshan | | | | | | | | | | | | 1000 | بدخشان | شمال شرق | 9 |
| 10 | West | Hirat | | | | | | | | | 600 | 400 | 500 | 500 | هرات | غرب | 10 |
| 11 | West | Farah | | | | | | | | | 450 | 700 | 450 | 500 | فراه | غرب | 11 |
| 12 | West | Badghis | | | | | | | | | 470 | 600 | 500 | 500 | بادغیس | غرب | 12 |
| 13 | West-Central | Ghor | | | | | | | | | 700 | 700 | 700 | 700 | غور | غرب مرکزی | 13 |
| 14 | West-Central | Bamyan | | | | | 400 | 400 | 400 | 750 | 650 | 650 | | | بامیان | غرب مرکزی | 14 |
| 15 | Central | Kabul | 350 | 350 | 350 | 350 | 350 | 350 | 350 | | 300 | 400 | 500 | 800 | کابل | مرکزی | 15 |
| 16 | Central | Parwan | 300 | 300 | 430 | 450 | 300 | 250 | 250 | | | | 400 | 400 | پروان | مرکزی | 16 |
| 17 | Central | Kapisa | | | | | | | | | 600 | 500 | 600 | 500 | کاپیسا | مرکزی | 17 |
| 18 | Central | Logar | 300 | 300 | 300 | 350 | 350 | 370 | 370 | 400 | 400 | 400 | 400 | 400 | لوگر | مرکزی | 18 |
| 19 | Central | Wardak | | | | | | | | | 600 | 550 | 450 | 500 | وردک | مرکزی | 19 |
| 20 | South | Paktya | 200 | 250 | 300 | | | | | | | 380 | 500 | 400 | پکتیا | جنوب | 20 |
| 21 | South | Paktika | | | | | | | | | | | 500 | 500 | پکتیکا | جنوب | 21 |
| 22 | South | Khost | 200 | 300 | 350 | 360 | 400 | 350 | 350 | | 345 | 345 | 410 | 400 | خوست | جنوب | 22 |
| 23 | South | Ghazni | 400 | 400 | 500 | 450 | 450 | 650 | 650 | | 450 | 450 | 250 | 450 | غزنی | جنوب | 23 |
| 24 | East | Nangarhar | 500 | 500 | 500 | 400 | 400 | 400 | 400 | 400 | 400 | 400 | 350 | 350 | ننگرهار | شرق | 24 |
| 25 | East | Laghman | 500 | 500 | 500 | | | | | | 400 | 400 | 400 | 400 | لغمان | شرق | 25 |
| 26 | East | Kunarha | 500 | 500 | 500 | 250 | 250 | 250 | 250 | | 750 | 300 | 420 | 420 | کنرها | شرق | 26 |
| 27 | East | Nooristan | | | | | | | | | | | | | نورستان | شرق | 27 |
| 28 | South-West | Kandahar | | | | 300 | 300 | | | | 400 | 450 | 450 | 450 | کندهار | جنوب غرب | 28 |
| 29 | South-West | Helmand | | | | 400 | 400 | | | | 500 | 500 | 800 | 800 | هلمند | جنوب غرب | 29 |
| 30 | South-West | Zabul | | | | | | | | | 500 | 500 | 500 | 520 | زابل | جنوب غرب | 30 |
| 31 | South-West | Nimroz | | | | | | | | | | | 500 | 440 | نیمروز | جنوب غرب | 31 |
| 32 | South-West | Uruzgan | | | | | | | | | | | 520 | 500 | اروزگان | جنوب غرب | 32 |

Annex V: Part 4
Retail market prices of selected agricultural commodities

قیمت های امتعه زراعتی مارکیت های ولایات

(Source: FAAHM, MAAHF)

Month: November, 2005

| SN | Region | Province | Water pump charge (Afs/hour) | Tractor hiring charge (Afs/hour) | Diesel (Afs/Litre) | Liquid Gas (Afs/kg) | Kerosene (Afs/litre) | Petrol (Afs/litre) | Raw Opium (Afs/kg) |
|----|--------------|------------|---------------------------------|-------------------------------------|-----------------------|------------------------|-------------------------|-----------------------|-----------------------|
| 1 | North | Faryab | 200 | 300 | 40 | 55 | 40 | 36 | |
| 2 | North | Juzjan | 200 | 700 | 35 | 55 | 32 | 35 | 4,000 |
| 3 | North | Sar-i-Pul | 250 | 600 | 30 | 62 | 22 | 22 | |
| 4 | North | Balkh | 250 | 600 | 34 | 55 | 35 | 31 | 9,000 |
| 5 | North | Samangan | | 600 | 35 | 50 | 40 | 30 | 4,000 |
| 6 | North-East | Bughlan | 130 | 300 | 33 | 45 | | 30 | 4,800 |
| 7 | North-East | Kunduz | | 500 | 34 | 60 | | 31 | 5,000 |
| 8 | North-East | Takhar | | 500 | 40 | 55 | 50 | 35 | |
| 9 | North-East | Badakhshan | | 1000 | 38 | 60 | 38 | 40 | 5,600 |
| 10 | West | Heart | 100 | 500 | 34 | 35 | 31 | 28 | |
| 11 | West | Farah | 100 | 450 | 32 | 40 | 30 | 30 | |
| 12 | West | Badghis | | 500 | 38 | 43 | 55 | 45 | |
| 13 | West-Central | Ghor | 250 | 700 | 36 | 50 | 34 | 33 | 7,000 |
| 14 | West-Central | Bamyan | | 650 | 38 | 65 | | 40 | |
| 15 | Central | Kabul | | 500 | 37 | 45 | 30 | 35 | |
| 16 | Central | Parwan | 600 | 400 | 35 | 52 | 38 | 32 | |
| 17 | Central | Kapisa | | 600 | 34 | 50 | 44 | 33 | |
| 18 | Central | Logar | | 400 | 35 | 50 | 34 | 33 | |
| 19 | Central | Wardak | 140 | 450 | 35 | 40 | 36 | 34 | |
| 20 | South | Paktya | | 500 | 34 | 60 | | 31 | 5,000 |
| 21 | South | Paktika | 120 | 500 | 34 | 60 | | 31 | 5,000 |
| 22 | South | Khost | 290 | 410 | 34 | 50 | 35 | 35 | 5,500 |
| 23 | South | Ghazni | 150 | 250 | 33 | 50 | 43 | 33 | |
| 24 | East | Nangarhar | 160 | 350 | 35 | 60 | 40 | 35 | |
| 25 | East | Laghman | | 400 | 38 | 60 | 35 | 38 | |
| 26 | East | Kunarha | | 420 | 44 | 70 | 50 | 40 | |
| 27 | East | Nooristan | | | | | | | |
| 28 | South-West | Kandahar | 300 | 450 | 37 | 45 | 38 | 32 | 6,950 |
| 29 | South-West | Helmand | 100 | 800 | 33 | 45 | 30 | 30 | 8,000 |
| 30 | South-West | Zabul | 250 | 500 | 40 | 50 | 40 | 38 | |
| 31 | South-West | Nimroz | | 500 | 28 | 37 | 28 | 22 | 4,800 |
| 32 | South-West | Uruzgan | 290 | 520 | 38 | 50 | 40 | 35 | |

Annex VI: Part 1
Retail market prices of selected agricultural commodities

قیمت های امتعه زراعتی مارکیت های ولایات

(Source: FAAHM, MAAHF)

Month: December, 2005

| SN | Region | Province | Wheat Local (Afs/kg) | Wheat imported (Afs/kg) | Wheat Flour local (Afs/kg) | Wheat Flour imported (Afs/kg) | Rice local (Afs/kg) | Rice imported (Afs/kg) | Maize (Afs/kg) | Mungbeans (Afs/kg) | Pea (Afs/kg) |
|----|--------------|------------|----------------------------|-------------------------------|----------------------------------|-------------------------------------|---------------------------|------------------------------|-------------------|-----------------------|-----------------|
| 1 | North | Faryab | 12 | | 16 | 16 | 28 | 35 | 10 | 26 | 26 |
| 2 | North | Juzjan | 11 | 16 | 12 | 14 | 31 | 35 | 12 | 30 | 32 |
| 3 | North | Sar-i-Pul | 11 | 11 | 13 | 12 | 19 | 35 | 10 | 22 | 23 |
| 4 | North | Balkh | 10 | 9 | 13 | 12 | 31 | 34 | 12 | 25 | 33 |
| 5 | North | Samangan | 10 | | 11 | 14 | 24 | 32 | 14 | 25 | 30 |
| 6 | North-East | Bughlan | 9 | | 14 | 15 | 30 | 34 | 8 | 30 | 12 |
| 7 | North-East | Kunduz | 10 | | 12 | 12 | 19 | 36 | 17 | 24 | 31 |
| 8 | North-East | Takhar | 10 | | 13 | | 22 | 30 | 7 | 19 | 25 |
| 9 | North-East | Badakhshan | 10 | 14 | 21 | 24 | 30 | 32 | 14 | 25 | 50 |
| 10 | West | Heart | 10 | | 15 | | 30 | 35 | 18 | 28 | 30 |
| 11 | West | Farah | 11 | | 12 | 15 | 20 | 34 | 9 | 20 | 45 |
| 12 | West | Badghis | 11 | 13 | 13 | 14 | | 36 | 10 | 35 | 25 |
| 13 | West-Central | Ghor | 13 | | 14 | 16 | | 40 | | 35 | 30 |
| 14 | West-Central | Bamyan | 11 | 15 | 15 | 15 | | 35 | | 27 | |
| 15 | Central | Kabul | 11 | | | 16 | 24 | 36 | 10 | 26 | 36 |
| 16 | Central | Parwan | 11 | 9 | 13 | 16 | 22 | 36 | 9 | 24 | 35 |
| 17 | Central | Kapisa | 13 | 13 | 14 | 16 | 19 | 36 | 8 | 29 | 44 |
| 18 | Central | Logar | 13 | 12 | 14 | 14 | | 35 | 9 | 30 | 35 |
| 19 | Central | Wardak | 13 | 13 | 14 | 15 | 22 | 35 | 11 | 35 | 45 |
| 20 | South | Paktya | 11 | 12 | 13 | 13 | 24 | 33 | 9 | 24 | 42 |
| 21 | South | Paktika | 11 | | | 18 | 12 | 29 | 18 | 23 | |
| 22 | South | Khost | 11 | | 13 | 14 | 14 | 20 | 8 | 25 | 25 |
| 23 | South | Ghazni | 15 | 13 | | 15 | | 34 | 10 | 30 | 35 |
| 24 | East | Nangarhar | 11 | | | 14 | 22 | 30 | 6 | 26 | 30 |
| 25 | East | Laghman | 13 | | 14 | 17 | 22 | 33 | 9 | 23 | 38 |
| 26 | East | Kunarha | 11 | 12 | 14 | 17 | 30 | 35 | 8 | 24 | 60 |
| 27 | East | Nooristan | | | | | | | | | |
| 28 | South-West | Kandahar | 10 | | | 15 | | 34 | 9 | 29 | 50 |
| 29 | South-West | Helmand | 12 | | 13 | 14 | | 31 | 7 | 21 | |
| 30 | South-West | Zabul | 10 | | 15 | 15 | | 35 | 10 | 20 | 23 |
| 31 | South-West | Nimroz | 9 | | 9 | | | 35 | 9 | 33 | 38 |
| 32 | South-West | Uruzgan | 10 | | 13 | | 25 | 38 | 10 | 32 | 35 |

Annex VI: Part 2
Retail market prices of selected agricultural commodities

قیمت های امتعه زراعتی مارکیت های ولایات

(Source: FAAHM, MAAHF)

Month: December, 2005

| SN | Region | Province | Potato (Afs/kg) | Vegetable oil (Afs/litre) | Milk (Afs/litre) | Beef (Afs/kg) | Mutton (Afs/kg) | Chicken (Afs/kg) | Male Sheep live, one year (Afs/head) | Female Sheep live, one year (Afs/head) |
|----|--------------|------------|--------------------|---------------------------------|---------------------|------------------|--------------------|---------------------|--|--|
| 1 | North | Faryab | | 80 | 25 | 130 | 160 | 80 | 4,200 | 3,800 |
| 2 | North | Juzjan | 12 | 40 | 20 | 140 | 160 | 80 | 4,000 | 4,000 |
| 3 | North | Sar-i-Pul | 11 | 70 | 10 | 130 | 150 | 80 | 6,000 | 5,000 |
| 4 | North | Balkh | 13 | 53 | 18 | 150 | 180 | 90 | 4,500 | 4,000 |
| 5 | North | Samangan | 12 | 45 | 10 | 135 | 150 | 80 | 5,000 | 3,800 |
| 6 | North-East | Bughlan | 12 | 40 | 20 | 120 | 140 | 90 | 5,000 | 4,000 |
| 7 | North-East | Kunduz | 13 | 40 | 15 | 120 | 160 | 75 | | |
| 8 | North-East | Takhar | 11 | 42 | 20 | 100 | 140 | 80 | 4,500 | 5,000 |
| 9 | North-East | Badakhshan | 12 | 80 | 25 | 120 | 140 | 100 | 6,000 | 5,500 |
| 10 | West | Heart | 10 | 90 | 25 | 130 | 180 | 65 | 3,500 | 2,500 |
| 11 | West | Farah | 10 | 50 | 20 | 130 | 180 | 70 | 7,000 | 5,000 |
| 12 | West | Badghis | 12 | 42 | 25 | 120 | 150 | 60 | 8,000 | 5,000 |
| 13 | West-Central | Ghor | 10 | 45 | | 130 | 150 | | 8,000 | 5,000 |
| 14 | West-Central | Bamyan | 11 | 40 | | 120 | 160 | 105 | 7,000 | 4,500 |
| 15 | Central | Kabul | 15 | | 18 | 130 | 180 | 80 | 6,000 | 5,000 |
| 16 | Central | Parwan | 11 | 50 | 14 | 130 | 180 | 85 | 6,000 | 5,000 |
| 17 | Central | Kapisa | 13 | 47 | | 140 | 180 | 70 | 8,000 | 5,000 |
| 18 | Central | Logar | 11 | 40 | 15 | 120 | 150 | 85 | 8,000 | 5,000 |
| 19 | Central | Wardak | 9 | 40 | 17 | 130 | 180 | 100 | 9,000 | 6,000 |
| 20 | South | Paktya | 14 | 48 | | 110 | 165 | 80 | | |
| 21 | South | Paktika | 12 | | 14 | 145 | 159 | 79 | 8,000 | 5,000 |
| 22 | South | Khost | 16 | 50 | 33 | 100 | 150 | 85 | 6,000 | 3,500 |
| 23 | South | Ghazni | 10 | 39 | 20 | 130 | 180 | 95 | 1,400 | 4,500 |
| 24 | East | Nangarhar | 14 | 40 | 20 | 120 | 180 | 80 | 6,000 | 3,500 |
| 25 | East | Laghman | 13 | 40 | 15 | 110 | 130 | 100 | | |
| 26 | East | Kunarha | 20 | 55 | 40 | 120 | 160 | 100 | 4,500 | 5,000 |
| 27 | East | Nooristan | | | | | | | | |
| 28 | South-West | Kandahar | 14 | 43 | 23 | 120 | 200 | 80 | 5,500 | 4,500 |
| 29 | South-West | Helmand | 12 | 40 | 18 | 120 | 180 | 80 | 8,000 | 6,000 |
| 30 | South-West | Zabul | 10 | 40 | 13 | 130 | 180 | 80 | 6,000 | 5,000 |
| 31 | South-West | Nimroz | 11 | 35 | | 140 | 165 | 75 | 4,500 | 3,850 |
| 32 | South-West | Uruzgan | 12 | 45 | 18 | 130 | 170 | 85 | 7,500 | 7,000 |

Annex VI: Part 3
Retail market prices of selected agricultural commodities

قیمت های امتعه زراعتی مارکیت های ولایات

(Source: FAAHM, MAAHF)

Month: December, 2005

| SN | Region | Province | Male Goat live, one year (Afs/head) | Female Goat live, one year (Afs/head) | Wheat seed best quality (Afs/kg) | Local Urea best quality (Afs/kg) | Imported Urea best quality (Afs/kg) | DAP best quality (Afs/kg) | Agriculture labour (Afs/day) | Pair of oxen hiring (Afs/day) |
|----|--------------|------------|---|---|--|--|---|---------------------------------|------------------------------------|-------------------------------------|
| 1 | North | Faryab | 2,200 | 2,000 | 13 | 12 | 10 | 12 | 200 | 550 |
| 2 | North | Juzjan | 3,000 | 3,000 | 13 | | | | 150 | 600 |
| 3 | North | Sar-i-Pul | 3,500 | 3,000 | 12 | 13 | | 25 | 200 | 700 |
| 4 | North | Balkh | 2,600 | 2,700 | 14 | 13 | 12 | 16 | 200 | 680 |
| 5 | North | Samangan | 3,000 | 2,800 | 10 | 10 | 11 | 19 | 180 | 500 |
| 6 | North-East | Bughlan | 4,500 | 4,500 | 11 | 12 | 10 | 22 | 150 | 800 |
| 7 | North-East | Kunduz | | | 15 | 12 | 11 | 22 | 190 | 500 |
| 8 | North-East | Takhar | 3,000 | 3,000 | 11 | 15 | 13 | 27 | 150 | 600 |
| 9 | North-East | Badakhshan | 4,500 | 4,000 | 13 | | | | 250 | 300 |
| 10 | West | Heart | 3,500 | 2,500 | 10 | | 15 | 12 | 150 | 1500 |
| 11 | West | Farah | 2,500 | 2,000 | 12 | 14 | 16 | 26 | 200 | 450 |
| 12 | West | Badghis | 4,000 | 1,000 | 13 | | 10 | 14 | 150 | 300 |
| 13 | West-Central | Ghor | 3,500 | 3,000 | 13 | | 14 | 20 | 200 | 500 |
| 14 | West-Central | Bamyan | 4,000 | 3,500 | 14 | 12 | 13 | | 160 | |
| 15 | Central | Kabul | 3,500 | 3,000 | 15 | | 13 | 24 | 150 | 600 |
| 16 | Central | Parwan | 3,000 | 3,500 | 15 | 12 | 13 | 28 | 180 | 500 |
| 17 | Central | Kapisa | 4,000 | 3,500 | 14 | 12 | 13 | 26 | 200 | 500 |
| 18 | Central | Logar | 3,000 | 3,500 | 14 | | 12 | 23 | 200 | 600 |
| 19 | Central | Wardak | 2,500 | 2,000 | 15 | 11 | 12 | 24 | 200 | 450 |
| 20 | South | Paktya | | | 12 | | 12 | 22 | 190 | 500 |
| 21 | South | Paktika | 4,500 | 3,500 | 15 | 12 | 13 | 20 | 185 | 550 |
| 22 | South | Khost | 4,000 | 3,400 | 12 | | 14 | 23 | 200 | |
| 23 | South | Ghazni | 3,500 | 4,000 | 16 | 12 | 13 | 23 | 200 | 600 |
| 24 | East | Nangarhar | 4,000 | 3,000 | 15 | | 12 | 24 | 160 | 500 |
| 25 | East | Laghman | 4,000 | 4,500 | 18 | | 12 | 27 | 200 | 500 |
| 26 | East | Kunarha | 2,000 | 2,500 | | | 14 | 28 | 120 | 1600 |
| 27 | East | Nooristan | | | | | | | | |
| 28 | South-West | Kandahar | 4,500 | 3,500 | 17 | | 13 | 18 | 200 | |
| 29 | South-West | Helmand | 6,000 | 5,000 | 14 | | 12 | 24 | 200 | |
| 30 | South-West | Zabul | 3,000 | 2,800 | 21 | 12 | 12 | 21 | 200 | 700 |
| 31 | South-West | Nimroz | 4,500 | 3,300 | 9 | | 12 | | 280 | |
| 32 | South-West | Uruzgan | 3,500 | 3,000 | 16 | | 13 | 23 | 220 | 450 |

Annex VI: Part 4
Retail market prices of selected agricultural commodities

قیمت های امتعه زراعتی مارکیت های ولایات

(Source: FAAHM, MAAHF)

Month: December, 2005

| SN | Region | Province | Water pump charge (Afs/hour) | Tractor hiring charge (Afs/hour) | Diesel (Afs/Litre) | Liquid Gas (Afs/kg) | Kerosene (Afs/litre) | Petrol (Afs/litre) | Raw Opium (Afs/kg) |
|----|--------------|------------|---------------------------------|-------------------------------------|-----------------------|------------------------|-------------------------|-----------------------|-----------------------|
| 1 | North | Faryab | | 650 | 40 | 60 | 45 | 36 | 4,500 |
| 2 | North | Juzjan | 200 | 800 | 42 | 55 | 40 | 42 | 4,200 |
| 3 | North | Sar-i-Pul | | 600 | 36 | 62 | 36 | 34 | |
| 4 | North | Balkh | 250 | 600 | 34 | 55 | 35 | 31 | 9,000 |
| 5 | North | Samangan | | 700 | 40 | 55 | 40 | 35 | 5,000 |
| 6 | North-East | Bughlan | 140 | 600 | 37 | 50 | | 32 | |
| 7 | North-East | Kunduz | | 500 | 40 | 50 | | 36 | 5,000 |
| 8 | North-East | Takhar | | 700 | 40 | 50 | 40 | 38 | |
| 9 | North-East | Badakhshan | | 1000 | 38 | 60 | 37 | 40 | 3,400 |
| 10 | West | Heart | 100 | 500 | 31 | 35 | 40 | 30 | |
| 11 | West | Farah | 100 | 500 | 40 | 45 | 35 | 35 | |
| 12 | West | Badghis | | 500 | 45 | 43 | 55 | 50 | |
| 13 | West-Central | Ghor | 250 | 700 | 40 | 51 | 40 | 42 | 7,000 |
| 14 | West-Central | Bamyan | | | 40 | 55 | | 41 | |
| 15 | Central | Kabul | 150 | 800 | 40 | 45 | 40 | 40 | |
| 16 | Central | Parwan | 600 | 400 | 35 | 50 | 32 | 38 | |
| 17 | Central | Kapisa | | 500 | 40 | 50 | 44 | 38 | |
| 18 | Central | Logar | | 400 | 36 | 50 | 35 | 34 | |
| 19 | Central | Wardak | 140 | 500 | 37 | 52 | 38 | 35 | |
| 20 | South | Paktya | | 400 | 36 | 54 | 34 | 34 | |
| 21 | South | Paktika | 120 | 500 | 40 | 60 | | 32 | 20,000 |
| 22 | South | Khost | 290 | 400 | 36 | 50 | 38 | 36 | |
| 23 | South | Ghazni | 150 | 450 | 36 | 50 | 40 | 36 | |
| 24 | East | Nangarhar | 150 | 350 | 35 | 65 | 40 | 35 | |
| 25 | East | Laghman | | 400 | | | | | |
| 26 | East | Kunarha | | 420 | 42 | 60 | 45 | 40 | |
| 27 | East | Nooristan | | | | | | | |
| 28 | South-West | Kandahar | 350 | 450 | 36 | 45 | 40 | 33 | |
| 29 | South-West | Helmand | 100 | 800 | 33 | 45 | 30 | 30 | 8,000 |
| 30 | South-West | Zabul | 290 | 520 | 38 | 50 | 40 | 35 | |
| 31 | South-West | Nimroz | | 440 | 30 | 39 | 30 | 27 | 7,600 |
| 32 | South-West | Uruzgan | | 500 | 35 | 55 | 40 | 32 | |