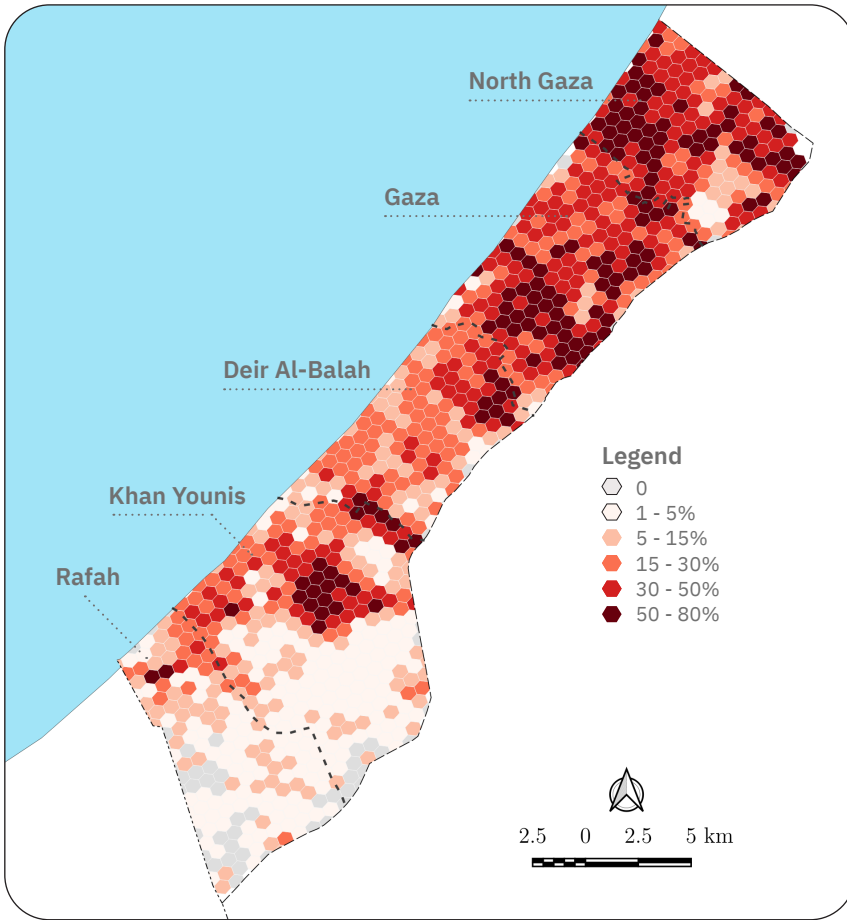




## Proportional damage to cropland in the Gaza Strip



## Agri-infrastructure damage (number of infrastructures damaged)



**488**  
Wells



**36**  
Ponds



**1**  
Ports



**206**  
Home barns



**76**  
Agricultural warehouses



**30**  
Farm storages



**5**  
Agricultural suppliers



**94**  
Animal shelters



**9**  
Rabbit farms



**20**  
Dairy farms



**172**  
Broiler farms



**5**  
Turkey farms



**149**  
Sheep farms



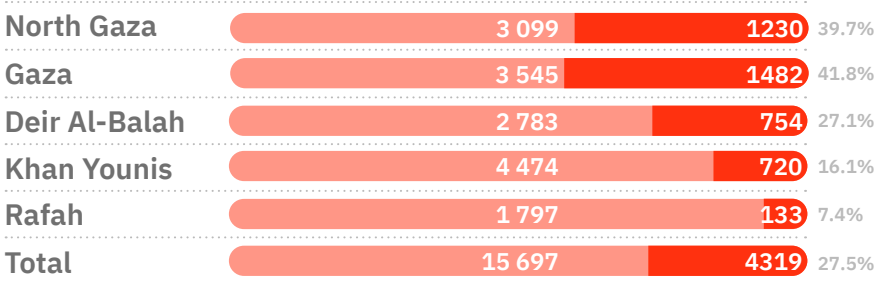
**5**  
Cattle farms



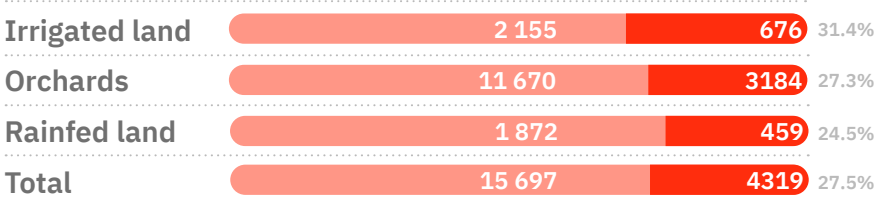
**29**  
Pigeon/other bird farms



## Damaged cropland area (ha) by governorate

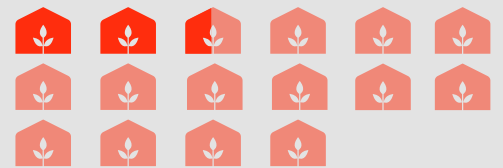


## Damaged cropland area (ha) by categories



## Greenhouses

Total land area: 1277 ha  
Damaged: 262 ha



\* each icon represents approx. 106 ha

**20.5% of greenhouses damaged**

This assessment has been conducted based on available satellite imagery, ancillary data and remote sensing analysis for the period 7 October - 31 December 2023 without field validation. Land cover data from 2021 was used as baseline data due to limited availability for data collection in the area of interest and time constraints related to the nature of the report. This assessment was conducted by the Geospatial Unit at the Land and Water Division (NSL) of FAO and will be further complemented with additional field assessment and use of very high-resolution imagery. The boundaries and names shown, and the designations used on these map(s) do not express any opinion whatsoever on the part of FAO concerning the legal status of any country, territory, city or area or of its authorities, or concerning the delimitation of its frontiers and boundaries. Dashed lines on maps represent approximate border lines for which there may not yet be full agreement.

