



**Food and Agriculture
Organization of the
United Nations**



**International Treaty
on Plant Genetic Resources
for Food and Agriculture**

The Budget of the International Treaty

Financial Report 2020-2021

The Core Administrative Budget

Including statements of amounts due and received for

The Working Capital Reserve
and

The Third Party Beneficiary Operational Reserve

Foreword

Financial Rule 8.2 of the International Treaty provides for a final certified statement of accounts to be provided to Contracting Parties at the end of a financial period.

The statement is provided in the document *“Financial Statements January 2020-December 2021 for The Core Administrative Budget, Special Funds for Agreed Purposes and Special Funds to support the participation of developing country Contracting Parties and the Benefit-sharing Fund”*

In addition to the statutory requirement of certified financial statements, this report has been prepared with the intention of providing interested Contracting Parties with a comprehensive picture of the status of the Treaty finances at period-end together with information that may be of use when considering the future needs resulting from the growth of the Treaty.

The following subjects are considered:

- Funding of the Core Administrative Budget, from both the FAO contribution and voluntary contributions from Contracting Parties
- Receipt of contributions from Contracting Parties
- Treaty core revenue
- Expenditure under the Core Administrative Budget
- The Working Capital Reserve
- The Third-Party Beneficiary Operational Reserve

The Secretariat trusts that this additional information will be useful, but should any supplementary information or clarification of the data presented in this report be required, please contact the Secretariat of the International Treaty – PGRFA-Treaty@fao.org

Core Administrative Budget of the International Treaty Financial Report January 2020 – December 2021

Contents:

- [The Core Administrative Budget \(CAB\)](#)
 - [Funding of the Core Administrative Budget](#)
- [Receipt of Contributions to the CAB and Reserve accounts](#)
 - [Contribution from FAO to the International Treaty](#)
 - [Contributions from Contracting Parties](#)
- [Expenditure under the CAB](#)
- [The Reserve Accounts](#)
 - [The Working Capital Reserve](#)
 - [The Third Party Beneficiary Operational Reserve](#)

- [Schedule 1 - Contributions to the Core Administrative Budget received during 2020](#)
- [Schedule 2 - Contributions to the Core Administrative Budget received during 2021](#)
- [Schedule 3 - Actual Expenditure vs the approved Core Administrative Budget for 2020-21 at 31 December 2021](#)

Reserve Funds

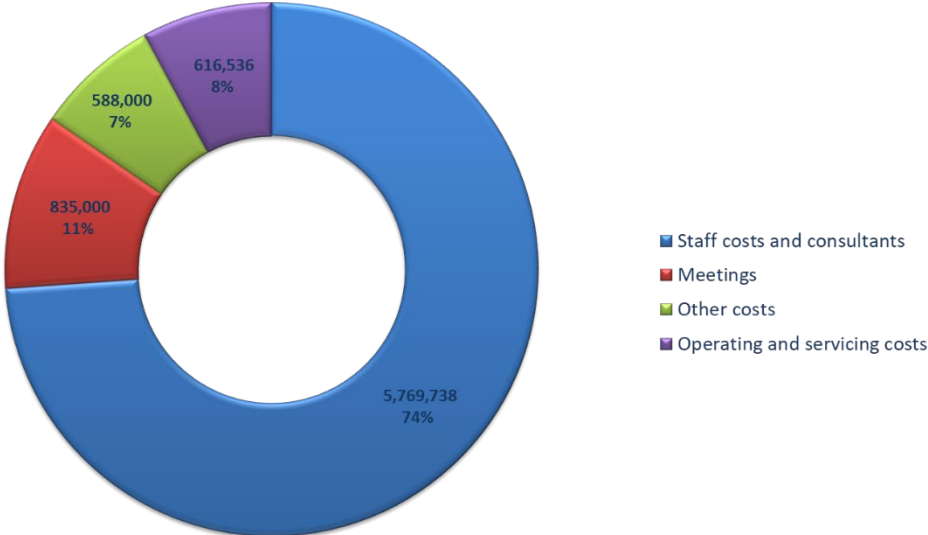
- [Annex 1 - Statement of Contributions to the Working Capital Reserve - at 31 December 2021](#)
- [Annex 2 - Statement of Contributions to the Third Party Beneficiary Operational Reserve – at 31 December 2021](#)

The Core Administrative Budget (CAB)

The CAB is adopted by the Governing Body of the International Treaty to cover the statutory and overhead costs for the maintenance of the Treaty. The CAB for the 2020-21 biennium was adopted by Resolution 14/2019 of the Eighth Session of the Governing Body (Rome, 11 – 16 November 2019) in the amount of USD7,809,274, as detailed in *Figure 1* below:

Figure 1

The Core Administrative Budget 2020-21
(amounts in USD)

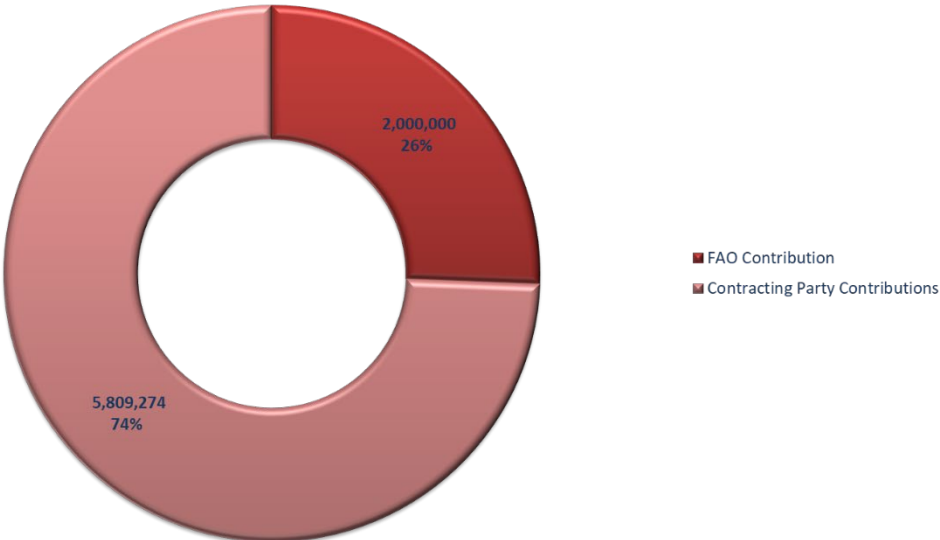


Funding of the Core Administrative Budget

The funding of the 2020-21 CAB considers a contribution USD 2 million from FAO with the remaining USD 5.8 million to be funded through contributions from Contracting Parties of the Treaty.

Figure 2

Funding of the CAB 2020-21
(amounts in USD)



Receipt of Contributions to the Core Administrative Budget and Reserve accounts

Contribution from FAO to the International Treaty

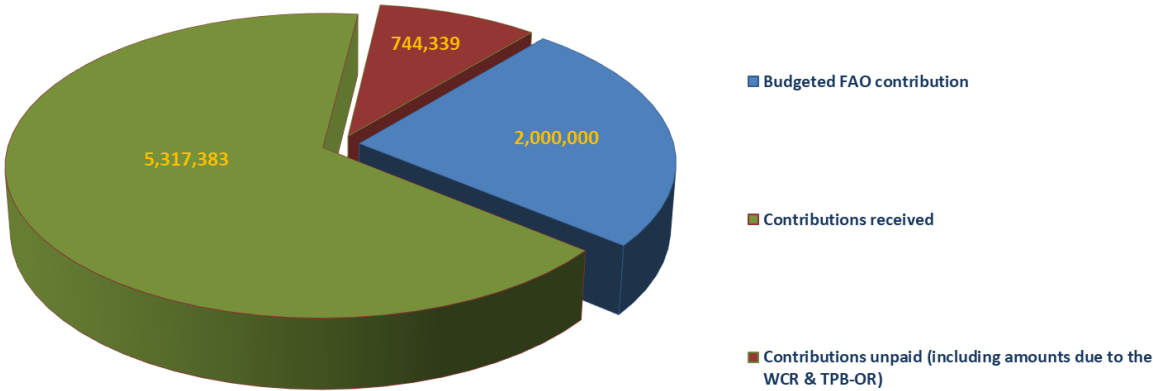
- 1. The provisional sum made available to the Treaty by FAO for the 2020-21 budget (in two annual instalments) is USD 2 million.

Contributions from Contracting Parties

- 2. Receipts to the CAB during the calendar year 2020 are listed in *Schedule 1*, those received during 2021 are listed in *Schedule 2*. As of 31 December 2021, amounts totalling USD 5,317,383 had been received (including contributions to the Working Capital Reserve and Third Party Beneficiary Operational Reserve and contributions received in advance). This was equivalent to approximately 88 percent of the contributions expected from Contracting Parties (including amounts due to the WCR and TPB-OR). This figure includes the contribution of Euro 100,000 (USD 116,043.47) from the European Commission and one contribution for 2022 received in advance.
- 3. The overall status of contributions to the CAB and reserve accounts at 31 December 2021 is shown in *Figure 3* below.

Figure 3

Overall Status of Contributions to the CAB 2020-2021 at 31 December 2021
(including Working Capital Reserve & TPB Operational Reserve)



Expenditure under the Core Administrative Budget

- 4. Summary information of expenditure under the Core Administrative Budget for the period 1/1/2020-31/12/2021 is presented in *Schedule 3*. Expenditure under the CAB at the end of 2021 was comfortably within the approved budget.

5. Human resource costs in *5011 Salaries Professional* account for 81 percent of the budgeted figure at USD 3.1 million whereas salaries for General Service staff account for 94 percent of the budgeted amount at USD 847 thousand.
6. It is recalled that Financial Rule 4.1 of the Treaty provides that the Secretary may only “incur obligations and make payments for the purposes for which the appropriations were voted and up to the amounts so voted, provided that commitments shall be covered by related contributions received or funds available in the Working Capital Reserve, subject to the provisions of Rule VI.4, and interest earned on funds held in trust”.
7. The restriction imposed by this Financial Rule makes it often difficult or impossible to fill vacancies without committing funds in excess of those received, which would contravene Financial Rule 4.1. Accordingly, in the intent to assure delivery of the Work Programme as approved, the services of consultants were sought as an interim and financially viable solution.
8. The overall cost of staff and non-staff human resources at 31 December 2021 amounted to 86 percent of the approved allotment in the CAB for the 2020-21 biennium.
9. In reviewing the costs relating to “*Meetings*”, “*Other Costs*” and “*General Operating Expenses*” in Schedule 3, it should be borne in mind that the budget lines adopted in the Core Administrative Budget do not correlate exactly with the expenditure categories used in the official accounts of FAO (“*Meetings*”, for example, covers numerous and highly differing costs such as: Consultancies, travel expenses, procurement of supplies, hospitality and other general operating expenses such as interpretation, translation and printing).

The Reserve Accounts

10. The established levels of the two reserves are USD 580,000 and USD283,280 respectively, which are now held in specific, segregated “baby accounts” within trust fund *MTF/INT/017/MUL - Core Administrative Budget*.
11. Not all Contracting Parties have, as yet, made contributions to the reserve funds and the additional amounts necessary to assure the full funding of the reserves are regularly requested from Contracting Parties as a part of the call for contributions to the Core Administrative Budget.

The Working Capital Reserve

12. The level of the Working Capital Reserve for the 2018-19 biennium was increased to USD 580,000 in accordance with paragraph 8 of Resolution 14/2017 of the 7th Session of the Governing Body. The amounts that Contracting Parties have been requested to contribute to the Reserve (in accordance with the indicative scale of contributions for 2018-2019) take into consideration amounts already paid.
13. During the 2020-2021 biennium, amounts totalling USD 19,126.73 were received from 13 Contracting Parties.
14. A statement of contributions paid and amounts due to the Working Capital Reserve at 31 December 2021 is given in Annex 1.

The Third Party Beneficiary Operational Reserve

15. The Governing Body, by Resolution 5/2009 of its Third Session, requested that the Secretary of the International Treaty establish the Third Party Beneficiary Operational Reserve and called for it to be funded by voluntary contributions in an amount commensurate to its needs. In this connection, the Ad hoc Third Party Beneficiary Committee at its Second Meeting in March 2009 proposed to the Governing Body an initial level of the Operational Reserve at USD 283,280.¹
16. Financial Rule 6.5, adopted pursuant to the establishment of the Operational Reserve as a condition of Resolution 5/2009, states that contributions should be “credited as priority” to this Reserve. Accordingly, Contracting Parties were requested to fulfil the commitment undertaken at the Governing Body through a letter calling for funds early in 2010. Subsequent follow-ups have been sent to Contracting Parties as a part of the routine calls for contributions.
17. In response to this, amounts totalling USD 269,875 or over 95 percent of the amounts due to the TPB-OR, have been received from 81 Contracting Parties. Contributions from 4 Contracting Parties were received during the 2020-2021 biennium totalling USD 28.32, leaving the balance due, as of 31 December 2021, at USD 13,404.
18. A statement of contributions paid and amounts due to the Third Party Beneficiary Operational Reserve at 31 December 2021 is given in Annex 2.

¹ www.fao.org/3/a-be433e.pdf refers

Schedule 1 - Contributions to the Core Administrative Budget received during 2020

(including amounts in respect of the Working Capital Reserve and the Third Party Beneficiary Operational Reserve)

Contracting Party	Date	Amount USD
Australia	07-Jan-2020	169,224.15
Austria	06-Apr-2020	26,974.35
Benin	22-Jan-2020	260.68
Bhutan	13-May-2020	59.89
Cameroon	18-Dec-2020	686.71
Canada	25-Aug-2020	104,683.11
Costa Rica	29-Dec-2020	2,381.80
Costa Rica	02-Sep-2020	2,381.50
Cyprus	28-Apr-2020	2,730.36
Czechia	02-Apr-2020	11,909.00
Democratic People's Republic of Korea	18-May-2020	480.00
Denmark	18-Feb-2020	21,203.85
Ecuador	28-Apr-2020	6,099.74
Eritrea	19-Aug-2020	59.89
Estonia	23-Jun-2020	2,962.73
European Commission	22-Dec-2020	59,737.16
Fiji	24-Apr-2020	244.57
Finland	18-Feb-2020	32,241.47
France	12-May-2020	200,000.00
Germany	26-Oct-2020	233,184.26
Greece	08-Jun-2020	28,000.70
Guatemala	03-Dec-2020	1,365.18
Hungary	29-Sep-2020	7,872.11
India	17-Dec-2020	63,843.92
Ireland	16-Dec-2020	28,407.35
Italy	07-Jul-2020	134,378.50
Japan	20-Aug-2020	352,990.00
Kiribati	04-Jun-2020	58.09
Latvia	27-Mar-2020	3,601.75
Lithuania	25-Nov-2020	5,460.72
Madagascar	23-Nov-2020	306.02
Madagascar	23-Oct-2020	231.59
Malaysia	28-Apr-2020	26,083.64
Malta	28-May-2020	1,278.04
Namibia	26-Jun-2020	710.71
Netherlands	06-Mar-2020	103,811.73 ^{1/}
Nicaragua	13-May-2020	446.98
Oman	15-Jul-2020	9,023.90
Panama	26-Oct-2020	1,713.74
Papua New Guinea	04-May-2020	759.21
Papua New Guinea	21-Jan-2020	319.46
Philippines	20-May-2020	7,842.52
Republic of Korea	17-Dec-2020	33,665.49
Serbia	20-Nov-2020	2,149.43
Slovenia	09-Apr-2020	5,809.27
Sweden	11-Nov-2020	34,681.36
Switzerland	27-Mar-2020	88,096.69
Togo	25-Sep-2020	167.46
Trinidad and Tobago	13-Aug-2020	3,078.92
Tunisia	21-Jan-2020	2,020.24
Türkiye	25-Mar-2020	52,486.79
United Kingdom of Great Britain and Northern Ireland	19-Mar-2020	174,888.19
United States of America	30-Sep-2020	97,500.00
United States of America	21-Jul-2020	552,500.00
United States of America	08-May-2020	97,500.00
		2,800,554.92

^{1/} Funds previously unidentified were credited to the Treaty in 2021

Schedule 2 - Contributions to the Core Administrative Budget received during 2021

(including amounts in respect of the Working Capital Reserve and the Third Party Beneficiary Operational Reserve)

Contracting Party	Date	Amount USD
Algeria	15-Mar-2021	10,527.88
Angola	01-Apr-2021	755.21
Angola	30-Dec-2021	755.21
Austria	16-Mar-2021	29,171.44
Brazil	01-Mar-2021	172,048.31
Brazil	01-Dec-2021	18,798.45
Burkina Faso	25-Aug-2021	310.97
Burundi	23-Jun-2021	66.72
Canada	09-Feb-2021	104,683.22
Czechia	25-Feb-2021	11,909.02
Denmark	10-Mar-2021	21,203.85
Egypt	15-Jun-2021	14,650.72
European Commission	15-Dec-2021	56,306.31
Germany	12-Mar-2021	116,592.13
Germany	17-Nov-2021	116,592.13
Guatemala	29-Nov-2021	1,365.18
Hungary	27-May-2021	7,929.12
Indonesia	01-Apr-2021	41,594.40
Ireland 1/	31-Dec-2021	12,445.75
Italy	08-Oct-2021	127,906.98
Japan	16-Aug-2021	339,900.00
Jordan	05-Apr-2021	1,611.07
Mali	06-Oct-2021	287.01
Moldova	30-Dec-2021	232.37
Norway	14-Dec-2021	57,744.18
Panama	10-Jun-2021	1,713.74
Philippines	07-May-2021	8,381.32
Republic of Korea	01-Feb-2021	154,688.22
Seychelles	07-Dec-2021	174.28
Spain	11-Jun-2021	82,172.18
Spain	13-Jan-2021	82,172.18
Sweden	07-Dec-2021	36,101.51
Tunisia	22-Jan-2021	1,917.07
Türkiye	01-Dec-2021	52,486.79
Tuvalu	07-Apr-2021	63.98
United Kingdom of Great Britain and Northern Ireland	05-Feb-2021	174,888.20
United States of America	03-Aug-2021	650,000.00
Uruguay	03-Aug-2021	6,680.67
	Total 2021 receipts	<u>2,516,827.77</u>
	Total biennium receipts	<u>5,317,382.69</u>

1/ - Contribution for the year 2022, received in advance in 2021

Schedule 3 – Actual Expenditure vs the approved Core Administrative Budget for 2020-21 at 31 December 2021 (all amounts in USD)

Approved Core Administrative Budget for 2020-21 (as per Resolution 14/2019 Annex 1)	Expenditure Category (account description)	Actual Expenditure	Forecast to year end	Actual plus Forecast	Variance
A.1 Established staff positions	5011 Salaries Professional	3,087,269	-	3,087,269	745,684
A.1 Established staff positions	5012 Salaries General Service	846,914	-	846,914	51,781
A.3 Other consultancy costs	5013 Consultants	1,000,480	-	1,000,480	37,611
B. Meetings	5050 General Operating Expenses - internal common services	191,581	-	191,581	643,419
C.1 Core staff duty travel	5021 Travel	33,785	-	33,785	302,715
C.2 Publications and communication	5040 General Operating Expenses - external common services	10,978	-	10,978	87,022
C.3 Supplies and equipment	5024 Expendable Procurement	18,501	-	18,501	2,126
	5025 Non Expendable Procurement	14,625	-	14,625	-
C.4 Contracts	5014 Contracts	70,516	-	70,516	6,984
C.5 Staff Training	5023 Training	2,246	-	2,246	22,754
C.6 Miscellaneous	5026 Hospitality	50	-	50	14,016
	5020 Locally Contracted Labour	5,935	-	5,935	-
D. General Operating Expenses	5028 General Operating Expenses	28,834	-	28,834	258,876
E. Project Servicing Cost	5029 Support Costs	200,691	-	200,691	128,136
Total adopted budget	Total Expenditure	7,809,274	-	5,512,404	2,296,870

Annex 1 - Statement of Contributions to the Working Capital Reserve - at 31 December 2021

(Established level = USD 580,000 in accordance with paragraph 8) of Resolution 14/2017)

Contracting Party	Scale ² 2018-19	Amount payable USD	Amounts paid during 2010-21 ³ USD	Balance payable USD
Afghanistan	0.008%	46.40	-	46.40
Albania	0.010%	58.00	-	58.00
Algeria	0.201%	1,165.80	1,165.80	-
Angola	0.012%	69.60	69.60	-
Antigua and Barbuda	0.003%	17.40	-	17.40
Argentina	1.114%	6,461.20	-	6,461.20
Armenia	0.008%	46.40	-	46.40
Australia	2.919%	16,930.20	16,930.20	-
Austria	0.899%	5,214.20	5,214.20	-
Bangladesh	0.012%	69.60	69.60	-
Belgium	1.105%	6,409.00	1,373.60	5,035.40
Benin	0.004%	23.20	23.20	-
Bhutan	0.001%	5.80	5.80	-
Bolivia	0.015%	87.00	-	87.00
Brazil	4.775%	27,695.00	27,695.00	-
Bulgaria	0.056%	324.80	272.00	52.80
Burkina Faso	0.005%	29.00	29.00	-
Burundi	0.001%	5.80	5.80	-
Cambodia	0.005%	29.00	20.00	9.00
Cameroon	0.012%	69.60	69.60	-
Canada	3.648%	21,158.40	21,158.40	-
Central African Republic	0.001%	5.80	-	5.80
Chad	0.006%	34.80	34.80	-
Chile	0.498%	2,888.40	-	2,888.40
Congo, Republic of	0.008%	46.40	-	46.40
Cook Islands	0.001%	5.80	-	5.80
Costa Rica	0.059%	342.20	342.20	-
Côte d'Ivoire	0.011%	63.80	-	63.80
Croatia	0.124%	719.20	-	719.20
Cuba	0.081%	469.80	-	469.80
Cyprus	0.054%	313.20	313.20	-
Czechia	0.430%	2,494.00	2,494.00	-
Democratic People's Republic of Korea	0.006%	34.80	34.80	-
Democratic Republic of the Congo	0.010%	58.00	-	58.00
Denmark	0.729%	4,228.20	4,228.20	-
Djibouti	0.001%	5.80	-	5.80
Ecuador	0.084%	487.20	487.20	-
Egypt	0.190%	1,102.00	1,102.00	-

² Indicative Scale of Contributions for 2018-19 based on the UN Scale of Assessments for 2016-18, as established by General Assembly Resolution 70/245 adopted on 23 December 2015.

³ Includes credits resulting from reassessment on 1 January 2018 which have been considered as contributions to the Core Administrative Budget for 2018-2019.

Contracting Party	Scale 2018-19	Amount payable USD	Amounts paid during 2010-21 ³ USD	Balance payable USD
El Salvador	0.018%	104.40	-	104.40
Eritrea	0.001%	5.80	5.80	-
Estonia	0.047%	272.60	272.60	-
Ethiopia	0.012%	69.60	21.00	48.60
Fiji	0.004%	23.20	23.20	-
Finland	0.570%	3,306.00	3,306.00	-
France	6.070%	35,206.00	-	35,206.00
Gabon	0.021%	121.80	-	121.80
Germany	7.981%	46,289.80	46,289.80	-
Ghana	0.020%	116.00	-	116.00
Greece	0.588%	3,410.40	3,410.40	-
Guatemala	0.035%	203.00	203.00	-
Guinea	0.003%	17.40	-	17.40
Guinea-Bissau	0.001%	5.80	5.80	-
Guyana	0.003%	17.40	-	17.40
Honduras	0.010%	58.00	58.00	-
Hungary	0.201%	1,165.80	1,165.80	-
Iceland	0.029%	168.20	-	168.20
India	0.921%	5,341.80	5,341.80	-
Indonesia	0.630%	3,654.00	3,654.00	-
Iran, Islamic Republic of	0.588%	3,410.40	-	3,410.40
Iraq	0.161%	933.80	-	933.80
Ireland	0.418%	2,424.40	2,424.40	-
Italy	4.681%	27,149.80	27,149.80	-
Jamaica	0.011%	63.80	63.80	-
Japan	12.092%	70,133.60	70,133.60	-
Jordan	0.025%	145.00	145.00	-
Kenya	0.022%	127.60	44.00	83.60
Kiribati	0.001%	5.80	5.80	-
Kuwait	0.356%	2,064.80	-	2,064.80
Kyrgyzstan	0.003%	17.40	-	17.40
Lao People's Democratic Republic	0.004%	23.20	4.00	19.20
Latvia	0.062%	359.60	359.60	-
Lebanon	0.057%	330.60	236.00	94.60
Lesotho	0.001%	5.80	4.00	1.80
Liberia	0.001%	5.80	4.00	1.80
Libya	0.156%	904.80	-	904.80
Lithuania	0.090%	522.00	522.00	-
Luxembourg	0.080%	464.00	-	464.00
Madagascar	0.004%	23.20	23.20	-
Malawi	0.003%	17.40	-	17.40
Malaysia	0.402%	2,331.60	2,331.60	-
Maldives	0.003%	17.40	4.00	13.40
Mali	0.004%	23.20	-	23.20
Malta	0.020%	116.00	116.00	-
Marshall Islands	0.001%	5.80	-	5.80

Contracting Party	Scale 2018-19	Amount payable USD	Amounts paid during 2010-21 ³ USD	Balance payable USD
Mauritania	0.003%	17.40	4.00	13.40
Mauritius	0.015%	87.00	-	87.00
Montenegro	0.005%	29.00	5.00	24.00
Morocco	0.067%	388.60	-	388.60
Myanmar	0.012%	69.60	69.60	-
Namibia	0.012%	69.60	56.00	13.60
Nepal	0.008%	46.40	-	46.40
Netherlands	1.851%	10,735.80	10,735.80	-
Nicaragua	0.005%	29.00	29.00	-
Niger	0.003%	17.40	-	17.40
Norway	1.060%	6,148.00	6,148.00	-
Oman	0.141%	817.80	817.80	-
Pakistan	0.116%	672.80	392.00	280.80
Palau	0.001%	5.80	-	5.80
Panama	0.042%	243.60	243.60	-
Papua New Guineas	0.005%	29.00	4.00	25.00
Paraguay	0.018%	104.40	-	104.40
Peru	0.170%	986.00	-	986.00
Philippines	0.206%	1,194.80	1,194.80	-
Poland	1.050%	6,090.00	-	6,090.00
Portugal	0.490%	2,842.00	-	2,842.00
Qatar	0.336%	1,948.80	-	1,948.80
Republic of Korea	2.547%	14,772.60	14,772.60	-
Republic of Moldova	0.005%	29.00	29.00	-
Romania	0.230%	1,334.00	462.00	872.00
Rwanda	0.003%	17.40	4.00	13.40
Saint Lucia	0.001%	5.80	-	5.80
Samoa	0.001%	5.80	5.80	-
Sao Tome and Principe	0.001%	5.80	-	5.80
Saudi Arabia	1.431%	8,299.80	-	8,299.80
Senegal	0.006%	34.80	25.76	9.04
Serbia	0.040%	232.00	232.00	-
Seychelles	0.001%	5.80	5.80	-
Sierra Leone	0.001%	5.80	4.00	1.80
Slovakia	0.200%	1,160.00	-	1,160.00
Slovenia	0.105%	609.00	609.00	-
Spain	3.051%	17,695.80	17,695.80	-
Sri Lanka	0.039%	226.20	-	226.20
Sudan	0.012%	69.60	-	69.60
Swaziland	0.003%	17.40	17.40	-
Sweden	1.194%	6,925.20	6,925.20	-
Switzerland	1.424%	8,259.20	8,259.20	-
Syrian Arab Republic	0.030%	174.00	-	174.00
Togo	0.001%	5.80	4.00	1.80
Tonga	0.001%	5.80	-	5.80

Contracting Party	Scale 2018-19	Amount payable USD	Amounts paid during 2010-21 ³ USD	Balance payable USD
Trinidad and Tobago	0.042%	243.60	243.60	-
Tunisia	0.035%	203.00	203.00	-
Türkiye	1.271%	7,371.80	7,371.80	-
Tuvalu	0.001%	5.80	5.80	-
Uganda	0.011%	63.80	63.80	-
United Arab Emirates	0.754%	4,373.20	-	4,373.20
United Kingdom of Great Britain and Northern Ireland	5.576%	32,340.80	32,340.80	-
United Republic of Tanzania	0.012%	69.60	-	69.60
United States of America	22.000%	127,600.00	-	127,600.00
Uruguay	0.099%	574.20	574.20	-
Venezuela (Bolivarian Republic of)	0.713%	4,135.40	-	4,135.40
Yemen	0.012%	69.60	46.40	23.20
Zambia	0.009%	52.20	28.00	24.20
Zimbabwe	0.005%	29.00	20.00	9.00
	100.000%	580,000.00	360,114.76	219,885.24

**Annex 2 - Statement of Contributions to the Third Party Beneficiary Operational Reserve –
at 31 December 2021**

(Established level = USD 283,280 in accordance with Resolution 5/2009)

Contracting Party	Scale 42010-11	Amount payable USD	Amounts paid during 2010-21 USD	Balance payable USD
Afghanistan	0.001%	2.83	-	2.83
Albania	0.000%	-	-	-
Algeria	0.163%	461.75	462.00	(0.25)
Angola	0.006%	17.00	17.00	-
Armenia	0.004%	11.33	-	11.33
Australia	3.396%	9,620.19	9,620.19	-
Austria	1.685%	4,773.27	4,773.27	-
Bangladesh	0.019%	53.82	53.82	-
Belgium	2.095%	5,934.72	5,935.00	(0.28)
Benin	0.001%	2.83	2.83	-
Bhutan	0.001%	2.83	2.83	-
Brazil	1.664%	4,713.78	4,713.78	-
Bulgaria	0.038%	107.65	107.65	-
Burkina Faso	0.004%	11.33	11.33	-
Burundi	0.001%	2.83	2.83	-
Cambodia	0.001%	2.83	2.83	-
Cameroon	0.017%	48.16	48.16	-
Canada	5.658%	16,027.98	16,027.98	-
Central African Republic	0.001%	2.83	-	2.83
Chad	0.001%	2.83	2.83	-
Congo, Republic of	0.001%	2.83	-	2.83
Cook Islands	0.001%	2.83	-	2.83
Costa Rica	0.061%	172.80	172.80	-
Côte d'Ivoire	0.017%	48.16	-	48.16
Croatia	0.095%	269.12	-	269.12
Cuba	0.102%	288.95	-	288.95
Cyprus	0.083%	235.12	235.00	0.12
Czechia	0.533%	1,509.88	1,510.00	(0.12)
Democratic People's Republic of Korea	0.013%	36.83	36.50	0.33
Democratic Republic of the Congo	0.006%	17.00	-	17.00
Denmark	1.405%	3,980.08	3,980.00	0.08
Djibouti	0.001%	2.83	-	2.83
Ecuador	0.040%	113.31	113.00	0.31
Egypt	0.168%	475.91	476.00	(0.09)
El Salvador	0.038%	107.65	-	107.65
Eritrea	0.001%	2.83	2.83	-
Estonia	0.030%	84.98	84.98	-
Ethiopia	0.006%	17.00	17.00	-
Fiji	0.006%	17.00	17.00	-
Finland	1.072%	3,036.76	3,036.77	(0.01)

⁴ Indicative Scale of Contributions for 2010-11 based on the 2007-09 UN Scale of Assessments

Contracting Party	Scale 42010-11	Amount payable USD	Amounts paid during 2010-21 USD	Balance payable USD
France	11.974%	33,919.95	33,920.00	(0.05)
Gabon	0.015%	42.49	-	42.49
Germany	16.299%	46,171.81	46,172.00	(0.19)
Ghana	0.008%	22.66	-	22.66
Greece	1.133%	3,209.56	3,210.00	(0.44)
Guatemala	0.061%	172.80	172.80	-
Guinea	0.001%	2.83	-	2.83
Guinea-Bissau	0.001%	2.83	2.83	-
Honduras	0.009%	25.50	25.50	-
Hungary	0.463%	1,311.59	1,312.00	(0.41)
Iceland	0.070%	198.30	-	198.30
India	0.855%	2,422.04	2,422.00	0.04
Indonesia	0.306%	866.84	867.00	(0.16)
Iran, Islamic Republic of	0.342%	968.82	-	968.82
Ireland	0.845%	2,393.72	2,393.72	-
Italy	9.652%	27,342.19	27,342.19	-
Jamaica	0.019%	53.82	54.00	(0.18)
Jordan	0.023%	65.15	65.15	-
Kenya	0.019%	53.82	54.00	(0.18)
Kiribati	0.001%	2.83	2.83	-
Kuwait	0.346%	980.15	-	980.15
Kyrgyzstan	0.001%	2.83	-	2.83
Lao People's Democratic Republic	0.001%	2.83	2.83	-
Latvia	0.034%	96.32	96.32	-
Lebanon	0.064%	181.30	181.00	0.30
Lesotho	0.001%	2.83	2.83	-
Liberia	0.001%	2.83	2.83	-
Libya	0.117%	331.44	-	331.44
Lithuania	0.059%	167.14	167.00	0.14
Luxembourg	0.163%	461.75	-	461.75
Madagascar	0.004%	11.33	11.33	-
Malawi	0.001%	2.83	-	2.83
Malaysia	0.361%	1,022.64	1,022.64	-
Maldives	0.001%	2.83	2.83	-
Mali	0.001%	2.83	-	2.83
Mauritania	0.001%	2.83	2.83	-
Mauritius	0.021%	59.49	-	59.49
Montenegro	0.000%	-	-	-
Morocco	0.079%	223.79	-	223.79
Myanmar	0.009%	25.50	25.50	-
Namibia	0.011%	31.16	31.16	-
Nepal	0.000%	-	-	-
Netherlands	3.559%	10,081.94	10,081.94	-
Nicaragua	0.004%	11.33	11.33	-
Niger	0.001%	2.83	-	2.83
Norway	1.486%	4,209.54	4,210.00	(0.46)

Contracting Party	Scale 42010-11	Amount payable USD	Amounts paid during 2010-21 USD	Balance payable USD
Oman	0.138%	390.93	391.00	(0.07)
Pakistan	0.112%	317.27	317.00	0.27
Palau	0.001%	2.83	-	2.83
Panama	0.043%	121.81	122	(0.19)
Paraguay	0.009%	25.50	-	25.50
Peru	0.147%	416.42	-	416.42
Philippines	0.147%	416.42	416.42	-
Poland	0.953%	2,699.66	-	2,699.66
Portugal	1.002%	2,838.47	-	2,838.47
Qatar	0.163%	461.75	-	461.75
Republic of Korea	4.130%	11,699.46	11,699.46	-
Romania	0.132%	373.93	374.00	(0.07)
Rwanda	0.000%	2.83	2.83	-
Saint Lucia	0.001%	2.83	-	2.83
Samoa	0.001%	2.83	2.83	-
Sao Tome and Principe	0.001%	2.83	-	2.83
Saudi Arabia	1.422%	4,028.24	4,028.00	0.24
Senegal	0.008%	22.66	-	22.66
Seychelles	0.004%	11.33	11.00	0.33
Sierra Leone	0.001%	2.83	2.83	-
Slovakia	0.000%	-	-	-
Slovenia	0.183%	518.40	518.00	0.40
Spain	5.641%	15,979.82	15,979.82	-
Sudan	0.019%	53.82	-	53.82
Sweden	2.035%	5,764.75	5,764.75	-
Switzerland	2.311%	6,546.60	6,546.60	-
Syrian Arab Republic	0.030%	84.98	-	84.98
Togo	0.001%	2.83	2.83	-
Trinidad and Tobago	0.051%	144.47	144.00	0.47
Tunisia	0.059%	167.14	167.14	-
Türkiye	0.724%	2,050.95	2,051.00	(0.05)
Uganda	0.006%	17.00	17.00	-
United Arab Emirates	0.575%	1,628.86	-	1,628.86
United Kingdom of Great Britain and Northern Ireland	12.622%	35,755.60	35,755.60	-
United Republic of Tanzania	0.011%	31.16	-	31.16
Uruguay	0.051%	144.47	144.47	-
Venezuela (Bolivarian Republic of)	0.380%	1,076.46	-	1,076.46
Yemen	0.013%	36.83	37.00	(0.17)
Zambia	0.001%	2.83	2.83	-
Zimbabwe	0.015%	42.49	42.49	-
	100.000%	283,280.00	269,875.50	13,404.50

Banking instructions for the payment of Contributions to the International Treaty

Contributions are payable in US Dollars and should be remitted to the following

account: Bank Name:	Citibank
Bank Address:	111 Wall Street New York, New York 10043
Swift/BIC:	CITIUS33
ABA/Bank Code:	021000089
Account Name:	Food Agr Org TF (USD)
Account No.:	36352577
Narrative:	In favour of "The International Treaty on PGRFA - Trust Fund MTF/INT/017 MUL- TFAA970006414"



International Treaty
on Plant Genetic Resources
for Food and Agriculture